

Project Readiness Minimum Timelines

For all projects requesting PSRC Federal Highway Administration (FHWA) funds, Exhibit A provides a decision tree with minimum timelines for project milestones, based upon design status, environmental status, and right-of-way needs. Project schedules that reflect these minimum timelines between phases are considered to meet PSRC's project readiness eligibility requirements.

Minimum Guideline Considerations:

- If Preliminary Engineering/Design (PE) is at least 60% complete, there is less uncertainty about right-of-way (ROW) needs. In this case, the minimum timeline is based on the sponsor's determination of ROW needs—no ROW needed, Temporary Construction Easements [TCEs] only, or property acquisitions required.
- If PE is less than 60% complete, there is more uncertainty about ROW needs (including whether property acquisition will be required) and the minimum timeline assumes at least 2 years for the ROW phase, before the construction phase (CN) should be planned to begin.
- If the National Environmental Policy Act (NEPA) documentation is complete, there is no uncertainty about this timeline.
- If NEPA is not complete, but a kick-off meeting has occurred with Washington State Department of Transportation (WSDOT) Local Programs, AND,
 - a determination made that a formal Endangered Species Act (ESA) consultation will be required, at least 3 years should be planned between PE and the next phase; OR,
 - a determination made that no formal ESA consultation will be required, a shorter timeline between PE and the next phase may be planned.¹
- If NEPA is not complete, and a kick-off meeting has not yet occurred WSDOT Local Programs, there is more uncertainty about environmental requirements and at least 3 years should be planned between PE and the next phase.¹

Special Considerations:

If a sponsor indicates specific circumstances to justify a shorter project timeline than the minimums specified in Exhibit A, PSRC will review on a case-by-case basis, in consultation with WSDOT, to make an eligibility determination.

¹ For a project for which a transit agency sponsor intends to flex its FHWA award to the Federal Transit Administration (FTA), the project timeline should instead reflect NEPA status in accordance with FTA guidelines. The supporting explanation should include verification of whether the project is subject to, and has met, FTA property acquisition guidelines.

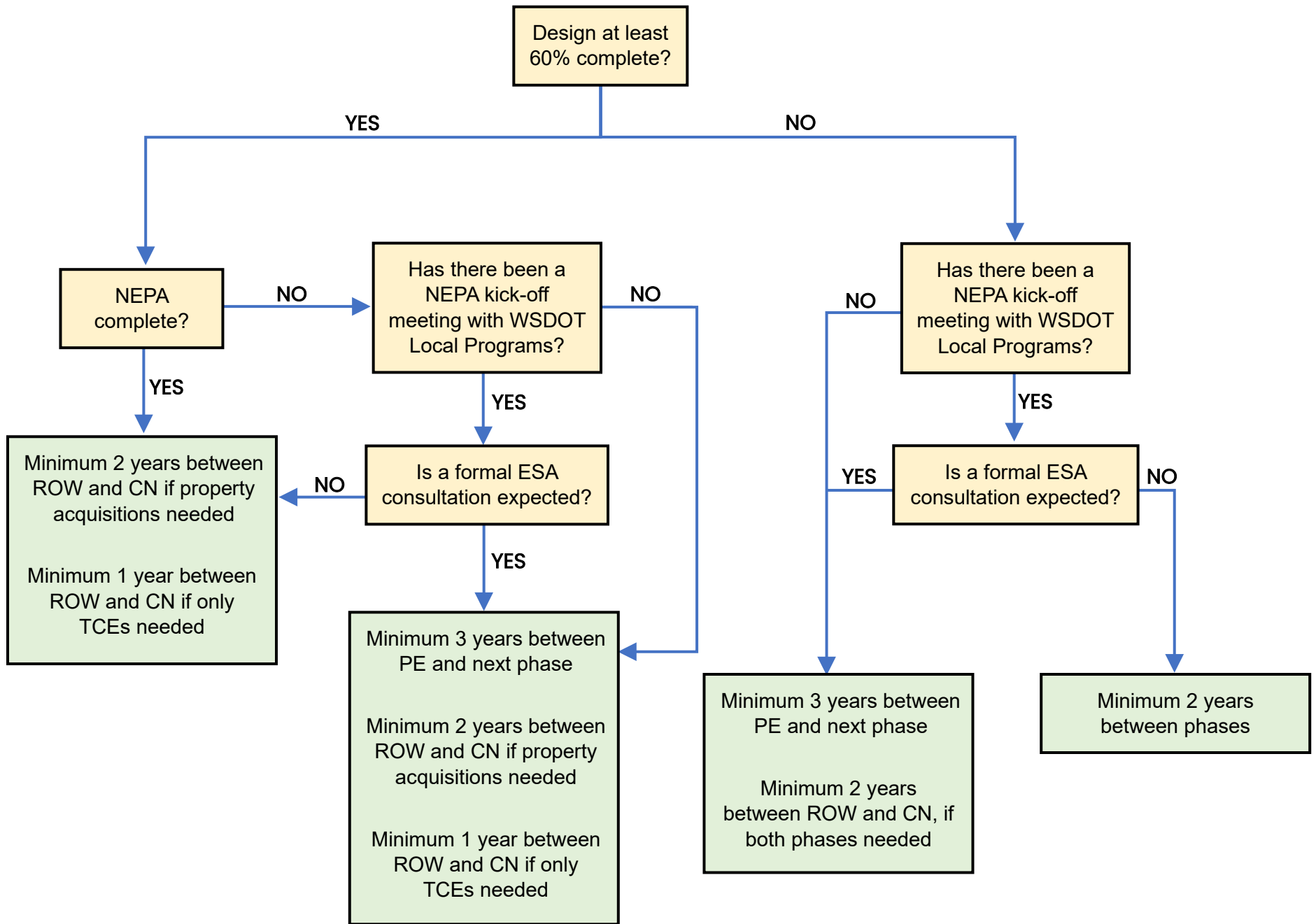


Exhibit A. PSRC Project Phase Milestone Minimum Timelines - 2024