

Regional Transportation Plan

Transportation Policy Board – February 8, 2024



Puget Sound Regional Council



We are leaders in the region to realize equity for all. Diversity, racial equity and inclusion are integrated into how we carry out all our work.

psrc.org/equity

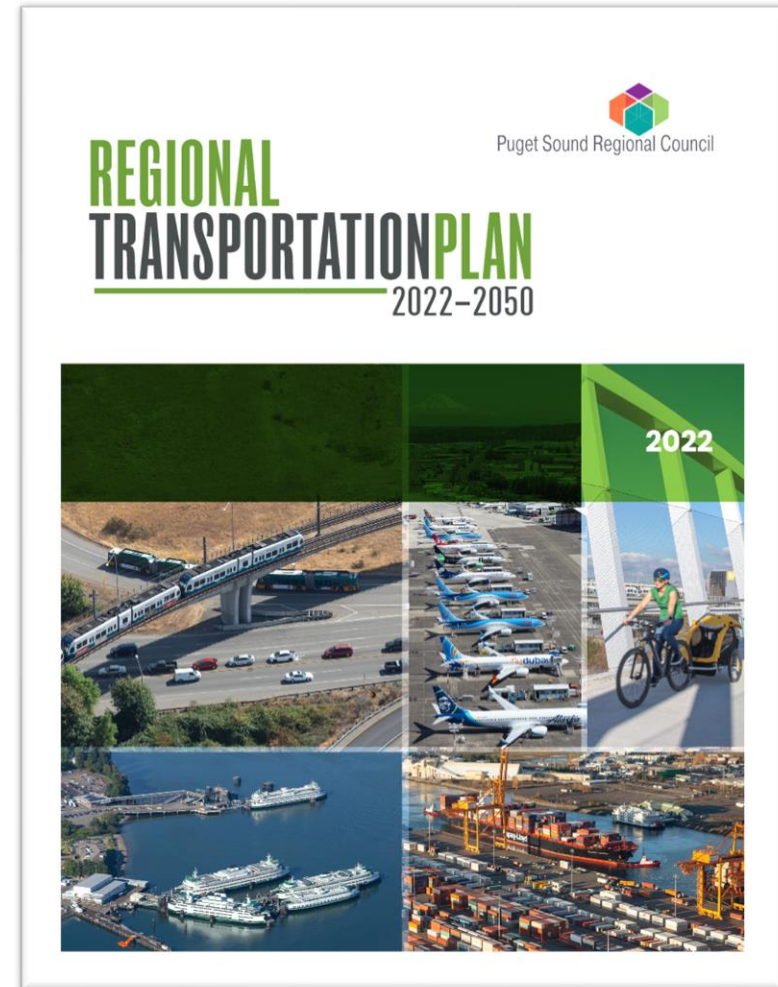
Presentation Overview

- Regional Transportation Plan (RTP) Requirements
- What's in the RTP?
- What's been happening since RTP adoption?
- Preparations/Next Steps for the next RTP (2026–2050)
- Your feedback on priorities



Regional Transportation Plan: Requirements

- Minimum 20-year planning horizon
- Updated every 4 years
- Integrated multimodal transportation system
- Reasonable financial strategy to fund investments
- Latest available estimates for growth, travel, and economic activity
- Performance measures and targets
- Address federal planning factors



VISION 2050 Implementation



- **Builds from VISION 2050**
- **Objectives:**
 - Make progress on existing challenges, address current and future needs of the transportation system
 - Provide better data and analysis to support local investment planning (2024 comprehensive plans)
 - Plan for long-term system investments to accommodate future growth
 - Improve existing system, big picture thinking on future investments (aviation, rail, ferries)

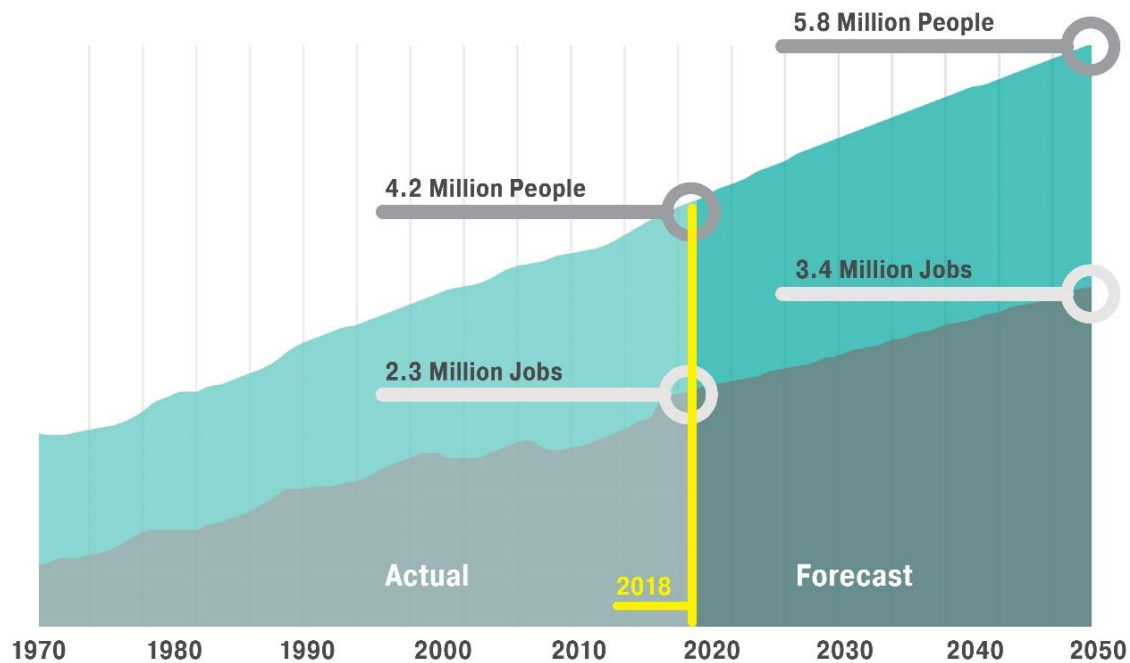
Regional Transportation Plan

2022–2050
REGIONAL TRANSPORTATION PLAN

The region continues to grow:

~1.6 million people by 2050

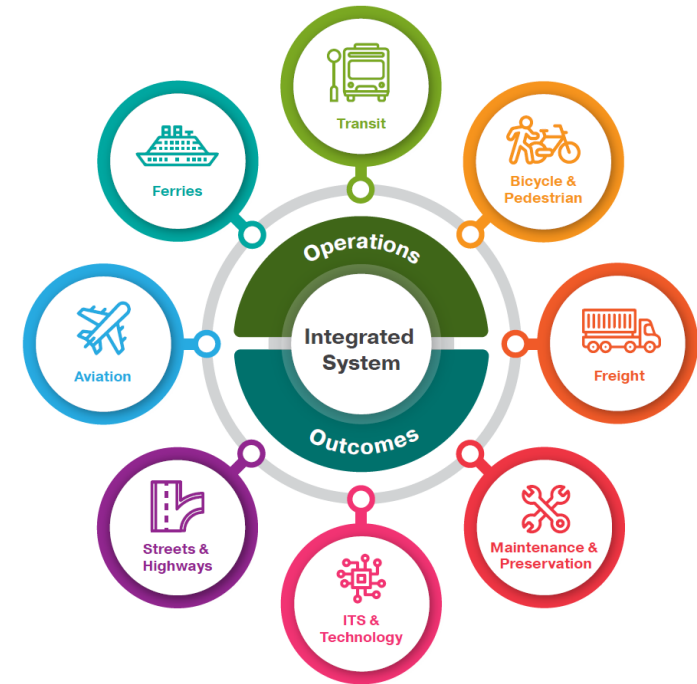
~1.1 million jobs by 2050



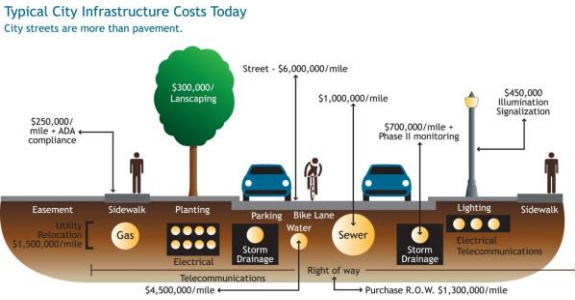
Source: PSRC, 2018 Regional Macroeconomic Forecast

Board adopted focus areas:

- Access to transit
- Safety
- Equity
- Climate
- Local agency needs
- Forward thinking/future investments



Programs included in the plan



Counties



Cities



Local Transit



Sound Transit



State Ferries

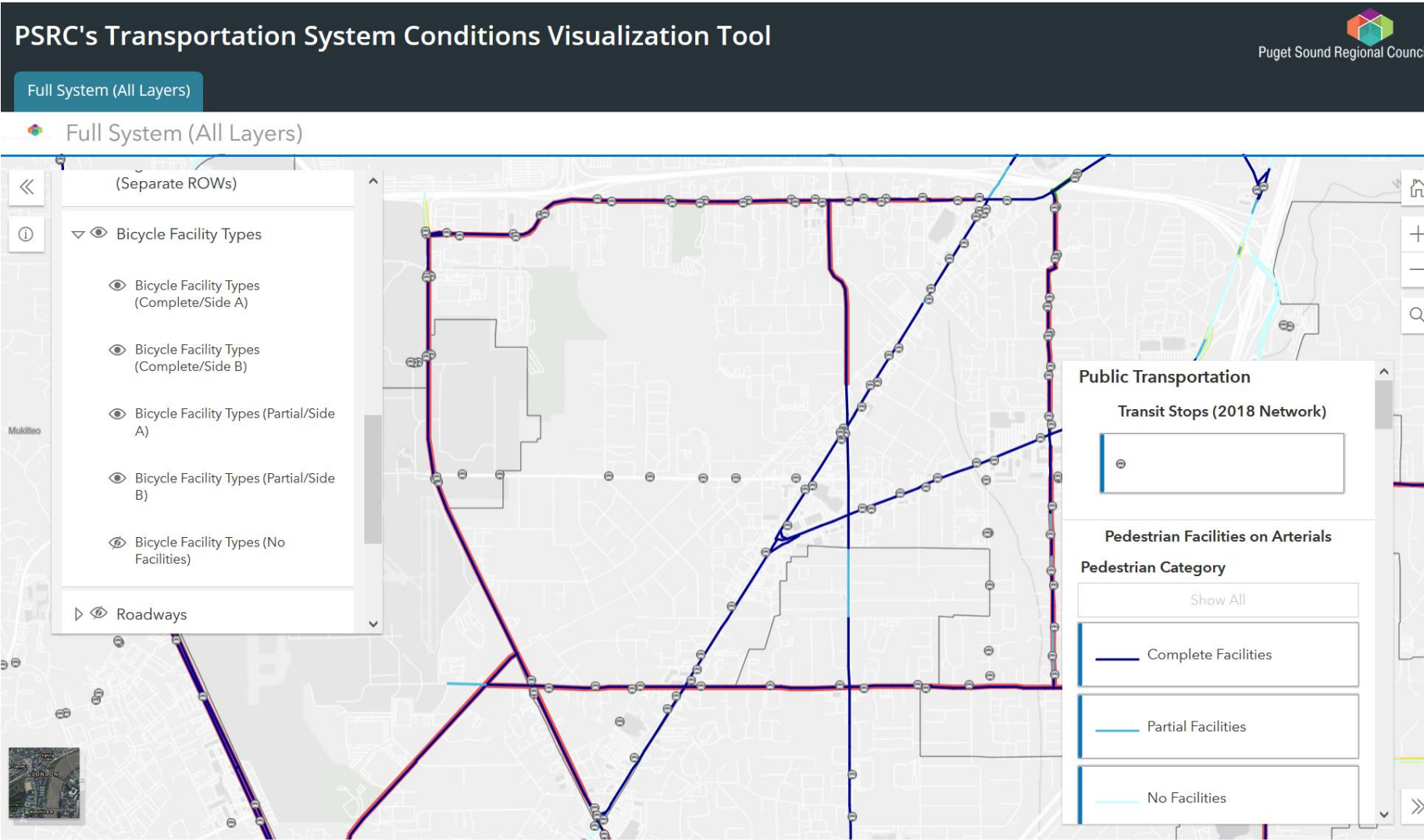


State Highways



Other Regional

Key Planning Work – System Needs and Opportunities



2022–2050
REGIONAL TRANSPORTATION PLAN

<https://www.psrc.org/planning-2050/regional-transportation-plan/transportation-system-visualization-tool>



Informed by Public Engagement



Online Engagement Platform Virtual Outreach Meetings



Personal Interviews



Social Media



Survey

 **Puget Sound Regional Council**
on Thursday



We want to hear from you! Take a survey to help plan the future of transportation in Puget Sound: <https://engage.psrc.org/regional-transportation-plan>



HOW WILL YOU GET AROUND?



ENGAGE.PSRC.ORG
Regional Transportation Plan
PSRC is developing the next Regional Transportation Plan, which will des...



What's in the Plan?

- **\$300 billion of investment over the next 28 years**
 - 56% will maintain, preserve and operate the system
 - 70% of the plan's system improvements are for investments in local and regional transit
 - 84% of the plan funded with forecast current law revenues



36

Bus Rapid Transit
routes



10

Passenger-only Ferry
routes



116

Miles of light rail and
80+ stations



2018 Regional Transit Network



BUS RAPID TRANSIT
7 Routes



LIGHT RAIL
2 Light Rail Routes
2 Streetcar Routes
1 Monorail Route



HEAVY RAIL
3 Commuter Rail Routes

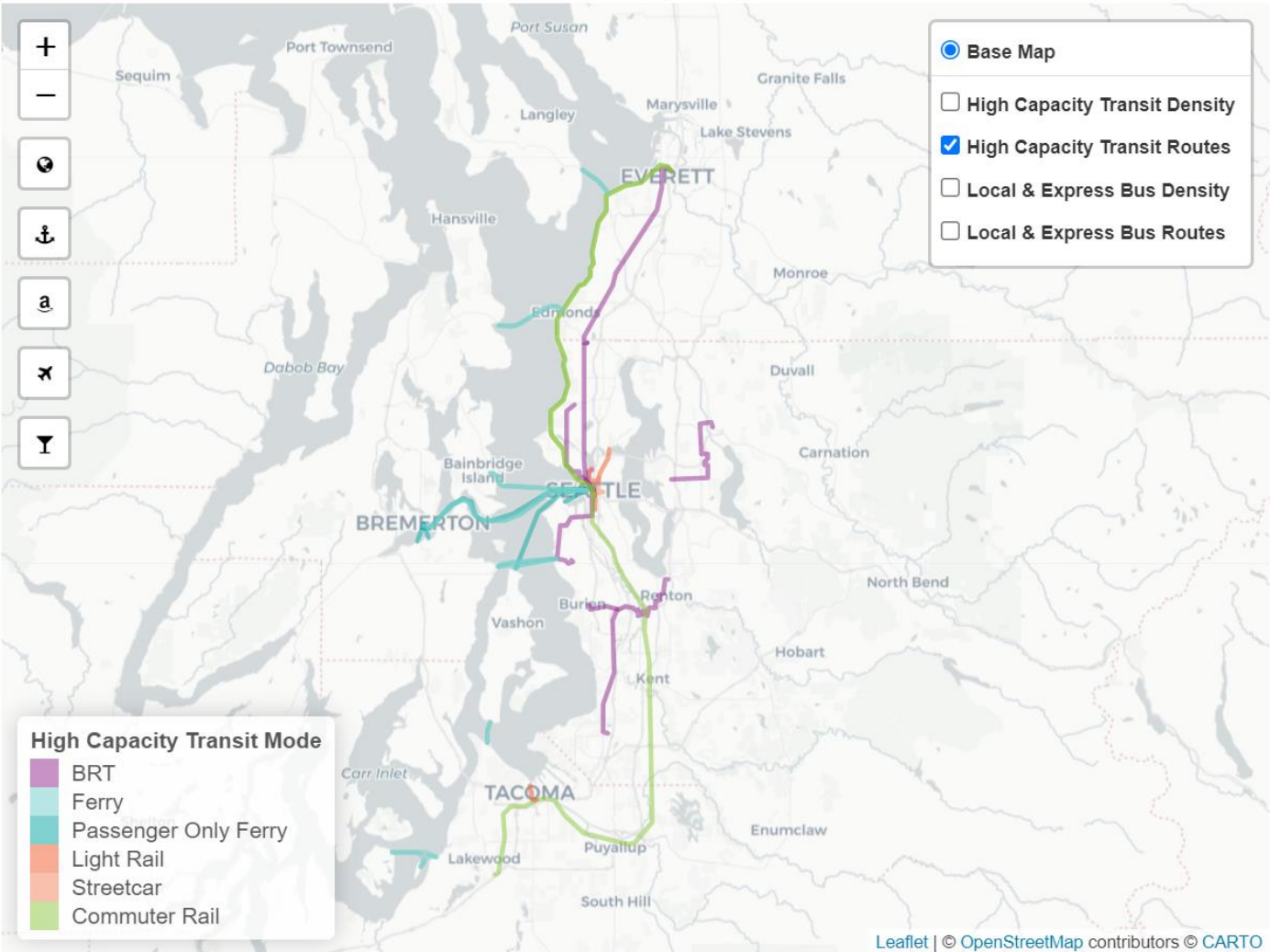


FERRIES
5 Passenger-Only Routes
11 Ferry Routes

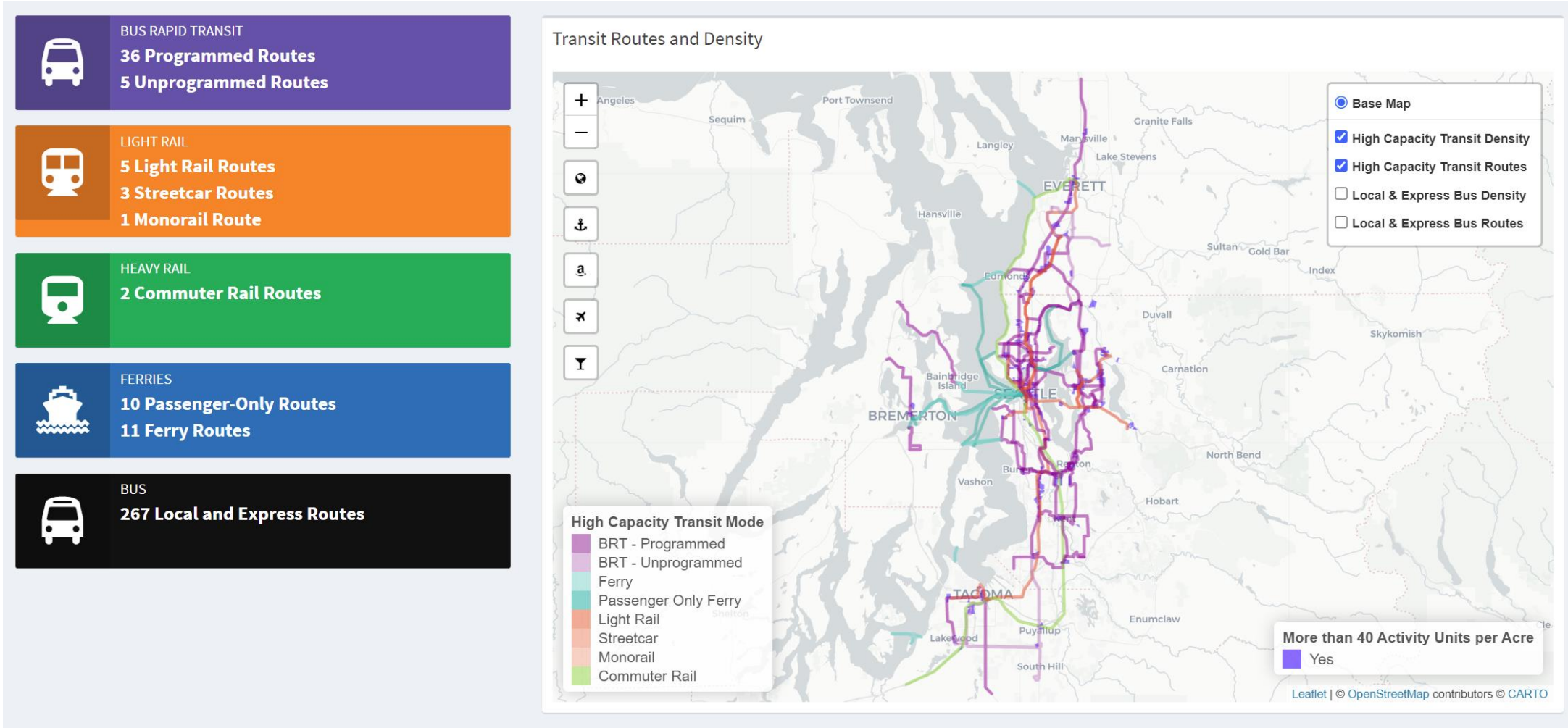


BUS
43 Frequent Bus Routes
88 Moderately Frequent Bus Routes
227 Low Frequency Bus Routes

Transit Routes and Density: 2018



2050 Regional Transit Network



What has been happening since 2022 Plan Adoption?

- Safety
- Equity
- Climate
- Transit access
- Transportation system inventories



- **PSRC held first Regional Safety Summit June 2023**
 - Purpose was to convene stakeholders to advance the conversation on how to achieve zero roadway fatalities and serious injuries
 - Feedback from Summit will inform development of the Regional Safety Action Plan
- **PSRC is developing a Regional Safety Action Plan due in early 2025 under the Safe Streets and Roads for All grant program**
 - Up to 25 jurisdictions will also develop local safety action plans under SS4A, in coordination with the regional program or through individual grants



- **FHWA Equity Pilot**
 - Goal was to develop innovative ways to improve equity in PSRC's project selection process
 - EAC recommendations adopted into upcoming project selection process
- **FTA Equity Formula Allocation**
 - New focused and intentional methodology to distribute regional FTA funds to improve transit services for equity focus area (EFA) populations

Building from VISION 2050 and the RTP:

- 2030 climate analysis and sensitivity testing
- Convened a climate expert review panel

Partnership efforts with Puget Sound Clean Air Agency, other partners:

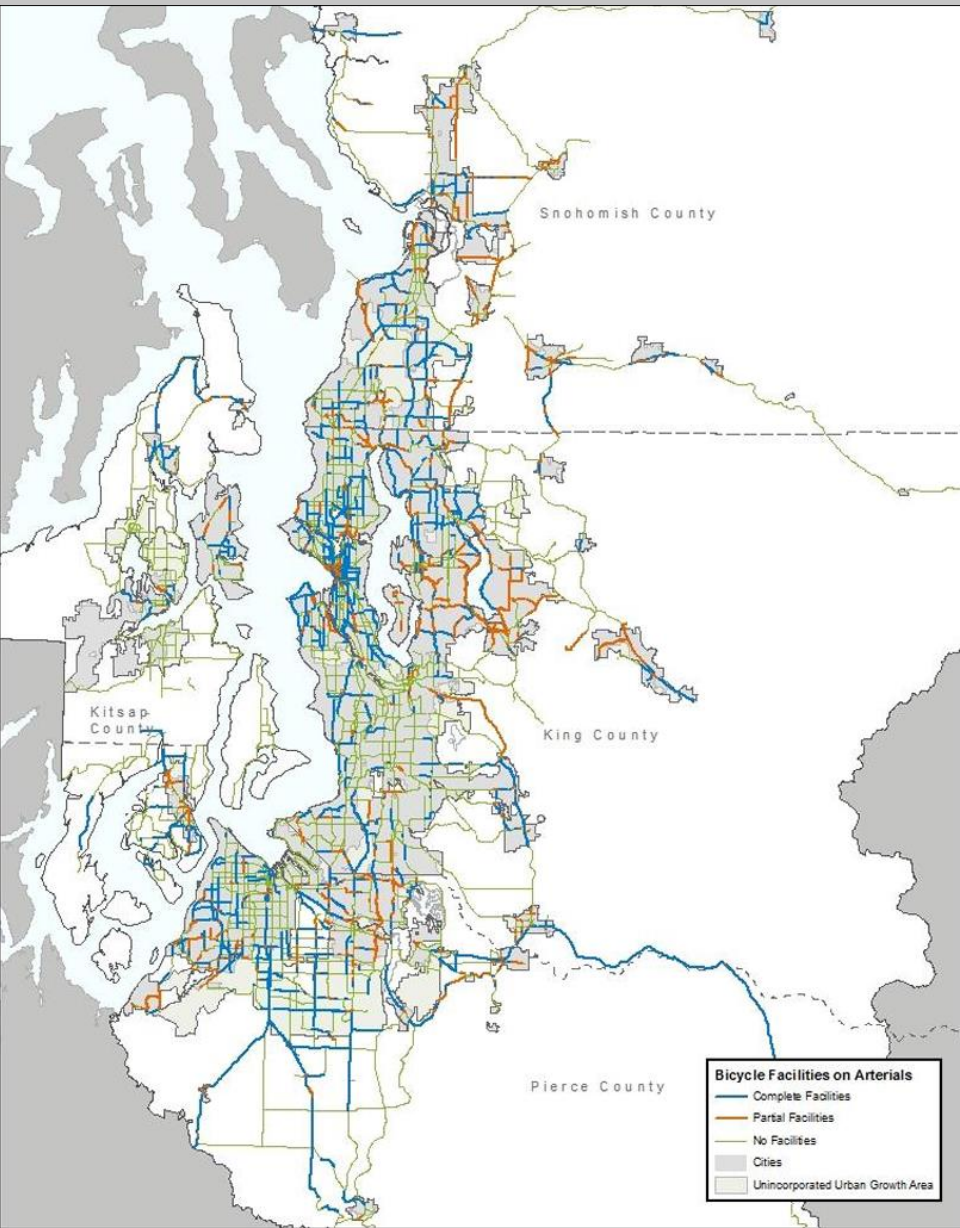
- Updated regional GHG emissions inventory
- Climate Pollution Reduction Grant Program (CPRG) regional climate planning
- Regional EV Clearinghouse



Work Program:

- Review existing transit access tools/resources in conjunction with updated data to identify improvements and next steps
- Identify potential improvements to active transportation (walk/bike/roll) connectivity near transit stations
- Review and assess Mobility On Demand (MOD) in providing transit access
- Update PSRC's existing transit access resources
- Develop regional transit access needs assessment and potential recommendations to address those needs.

System Inventories: Work to Date



- Pedestrian and bicycle facilities
- TDM activity
- ITS/Traffic Operations
- Mobility On Demand (MOD)
- Specialized Transportation
- Pedestrian and bicycle policies and regulations



Preparation and Next Steps: RTP (2026–2050)

2024

Engagement and
Identification of Plan Priorities

2025

Analysis and Draft
Plan Development

2026

Plan Adoption

Ongoing Public Outreach Informs the Plan





Thank You!

Gil Cerise

Program Manager
GCerise@psrc.org

Kelly McGourty

Director of Transportation
Planning
KMcGourty@psrc.org



Puget Sound Regional Council