

# Welcome to the PSRC Project Selection Workshop (FHWA)

## General Meeting Procedures:

- Attendees will be in a "listen only" mode during the meeting
- Please use the Question and Answer (Q & A) icon to ask a question

*Please note: the meeting is being recorded, and is part of the public record*

# 2024 FHWA Project Selection Workshop

February 15 and 21, 2024



Puget Sound Regional Council



*We are leaders in the region to realize equity for all. Diversity, racial equity and inclusion are integrated into how we carry out all our work.*

[psrc.org/equity](https://psrc.org/equity)

# Workshop Agenda



- Overview & Policy Framework
- Screening Form / Eligibility Requirements
- Evaluation Criteria
- Online Forms and Resources
- Schedule
- Questions & Answers
  - ✓ *Please type questions into the Zoom Q&A*



# Overview & Policy Framework



# Overview

Federal Highway Administration Funds	Federal Transit Administration Funds
Regional Competition	Equity Formula
Countywide Competitions	Earned Share

## All processes:

- Follow policy direction from Board, as adopted in the *Policy Framework for PSRC's Federal Funds*
- Follow regional policies and procedures, and must be consistent with
  - VISION 2050 and the Regional Transportation Plan
  - Local comprehensive plans, transit plans, state plans



# Overview

Federal Highway Administration Funds	Federal Transit Administration Funds
Regional Competition	Equity Formula
Countywide Competitions	Earned Share

- Federal Highway Administration (FHWA) competition is the focus of this workshop
- Federal Transit Administration (FTA) funding processes will take place later this spring



# Policy Framework for PSRC's Federal Funds

- Adopted by PSRC Executive Board prior to each funding cycle
- Funds distributed approximately every 2 years
  - Program funds into the future
  - 2024 process will distribute FFY 2027–2028 funds, with additional opportunity for 2025–2026 funds
- Based on VISION 2050 policies
- Detailed policies and procedures for conducting the process
- **Applies to Regional and all countywide competitions**



# Shared Regional / Countywide FHWA Process

- Regional competition
  - Limited number of applications, regional focus
- Countywide competitions
  - Set-asides distributed – preservation, bicycle/pedestrian
  - Rural minimum
  - Based on Policy Framework, but can be refined to reflect county priorities
- All competitions
  - All eligibility requirements apply
  - Single project phase request per competition – new in 2024
  - Phase must be fully funded with PSRC request plus all other reasonably available funds



# Policy Framework



Policy focus continues to be support for **centers** and the corridors that serve them:

- **Regional FHWA competition:** centers defined as regional growth and manufacturing/industrial centers
- **Countywide FHWA competitions:** centers definition expanded to include locally identified centers, including military facilities



# Recommending Forums for FHWA Processes

- Regional – Regional Project Evaluation Committee (RPEC)
- Countywide forums
  - King County Project Evaluation Committee (KCPEC)
  - Kitsap Regional Coordinating Council (KRCC)
  - Pierce County Transportation Coordinating Committee (TCC)
  - Snohomish County Infrastructure Coordination Committee (ICC)

Committees recommend to Transportation Policy Board  
Executive Board makes final decision



# FHWA Regional Competition

- Limited Number of Applications = 36
  - 6 each from Kitsap, Pierce and Snohomish Counties
  - 12 from King County
  - 2 each from Sound Transit, WSDOT, Puget Sound Clean Air Agency
- Three categories of projects
  - Regional Growth Centers
  - Manufacturing/Industrial Centers
  - Corridors Serving Centers
- Policy Focus = support for regional centers and the corridors that serve them

*Details of each countywide process provided in its Call for Projects*



# Funding Available

## Regional competition

	CMAQ		STBG	
	2027	2028	2027	2028
Total Available	\$16.40 million	\$16.40 million	\$10.93 million	\$10.93 million
Maximum Request	<b>\$8.2 million</b>	<b>\$8.2 million</b>	<b>\$5.465 million</b>	<b>\$5.465 million</b>

CMAQ = Congestion Management & Air Quality Improvement Program

STBG = Surface Transportation Block Grant Program

Additional funds available for 2025 & 2026 delivery to be awarded

- Carbon Reduction Program (CRP): \$15.1 million [eligibility similar to CMAQ]
- CMAQ: \$9.8 million | STBG: \$11.3 million

*Applicants requested to note in “Other Considerations” section of Funding Application if the project would be able to accept funds in 2025 or 2026.*



# Funding Available

## Countywide competitions

	CMAQ		STBG	
	2027	2028	2027	2028
King	\$7.31 million	\$7.31 million	\$22.57 million	\$22.57 million
Kitsap	---	---	\$5.38 million	\$5.38 million
Pierce	\$2.95 million	\$2.95 million	\$9.10 million	\$9.10 million
Snohomish	\$2.68 million	\$2.68 million	\$8.27 million	\$8.27 million
Maximum Request	Determined by Forum			

*\*\*Totals for each forum include Preservation and Nonmotorized set-asides*



# Funding Available

## Countywide competitions

Additional funds available for 2025 & 2026 delivery to be awarded

	CRP	STBG
King	\$7.99 million	\$5.98 million
Kitsap	\$0.96 million	\$0.72 million
Pierce	\$3.22 million	\$2.41 million
Snohomish	\$2.93 million	\$2.19 million

*Applicants requested to note in “Other Considerations” section of Funding Application if the project would be able to accept funds in 2025 or 2026.*



# Tracking of PSRC FHWA-Awarded Projects

## Goal = Efficient use of PSRC funds

- Projects delivered in a timely manner, cost of delays are minimized
  - Annual delivery targets = “use it or lose it”
- **Project Tracking Policies** updated over time, address all funding programs and processes
- Progress reports required twice a year
- Each project award tied to a specific fiscal year
  - June 1<sup>st</sup> obligation deadline
  - Opportunity to request a one-time extension if delay due to factors beyond the sponsor agency's control, subject to PSRC staff recommendation and board approval

PSRC's FHWA obligation deadline is the date by which a *complete and accurate* funding authorization package must be submitted to the sponsor's WSDOT regional office.



# Screening Form / Eligibility Requirements



# PSRC Screening Form

**Purpose:** Verify eligibility of a project to be awarded PSRC funds prior to completion of the full grant application.

## Considerations

- For each project entered into the competition, a screening form **must be submitted by the deadline**, and **approved by PSRC** prior to submitting the full funding application.
- Screening form deadlines:
  - March 6 for regional competition
  - March 11 for countywide competitions
- Screening Form Checklist & Guidance provided with the Call for Projects

**PLEASE CHECK THE CHECKLIST!**



# PSRC Screening Form Process

1. Sponsor provides key eligibility information via screening form
2. PSRC staff reviews screening form information, and either
  - a) Determines project meets all eligibility requirements and approves, OR  
*Sponsor may proceed with the funding application as soon as approval is provided*
  - b) Identifies areas where clarifications or corrections need to be made to confirm eligibility, and returns to sponsor to address  
*Sponsor must work with PSRC and fully resolve comments and questions before PSRC approval can occur*
3. Information in approved screening form may be uploaded to the project's full funding application



# Changes to Screening Form Process

- The information being requested has not changed
- What has changed?
  - All countywide competitions have same screening form deadline
  - Countywide screening forms will be reviewed on a first-come, first-served basis, regardless of forum
  - New project readiness guidelines have been established
  - Project Readiness / Financial Plan changed to an eligibility criterion

*Along with all other eligibility criteria, must be approved by PSRC before the project may be entered into the competition.*



# Eligibility Requirements

- Must be meet **STBG or CMAQ scope eligibility** requirements
- Must be consistent with the **Regional Transportation Plan**
- Must be consistent with **local comprehensive plan, and applicable transit or state plans**
- Must meet **Federal Functional Classification** requirements or exemptions
- Must show consideration of **pedestrian & bicycle facilities**
- Must meet **PSRC project readiness** requirements
- Must meet **project finance** requirements

**PLEASE CHECK THE CHECKLIST!**



# Scope Eligibility

- **STBG**

- most flexible
- can fund roadway, transit, bicycle/pedestrian, freight projects, etc.
- Rural minimum and non-motorized/preservation set-asides come from this source

- **CMAQ**

- projects must provide an air quality benefit
- general purpose capacity projects ineligible

*Projects that meet CMAQ eligibility requirements will also be considered for available **CRP** funds*



# Plan Consistency

- **Regional Transportation Plan (RTP)**
  - Project  $\geq$  regional capacity project threshold = must be on the RTP's financially constrained Regional Capacity Project list
  - Project  $<$  regional capacity project threshold and consistent with regional policies = programmatic, and consistent with RTP
- **Local plans**
  - Project must be in, or consistent with, a PSRC-certified (or conditionally certified) city or county comprehensive plan
  - Project must be consistent with applicable transit and/or state plans
  - State or transit project must also be consistent with local plan(s)



# Federal Functional Classification

- A roadway must be approved on the federally classified roadway system before projects on it may use federal transportation funds, OR,
- Meet guidelines for exceptions
  - Any bicycle and/or pedestrian project
  - Project not on a roadway
  - Any transit project, including equipment purchase or park & ride lot
- Funds may be requested for a project on a roadway planned to be added to the functionally classified network, but currently is not.

*If funds are awarded, the jurisdiction must complete the federal functional classification change process—with FHWA approval completed—prior to obligating the funds.*



# Pedestrian & Bicycle Consideration

- Per federal rules, pedestrian & bicycles must be considered in project development
  - Identify existing non-motorized facilities, and those included in project scope, or
  - If none exist, or are proposed with the project, provide an explanation per the guidance.



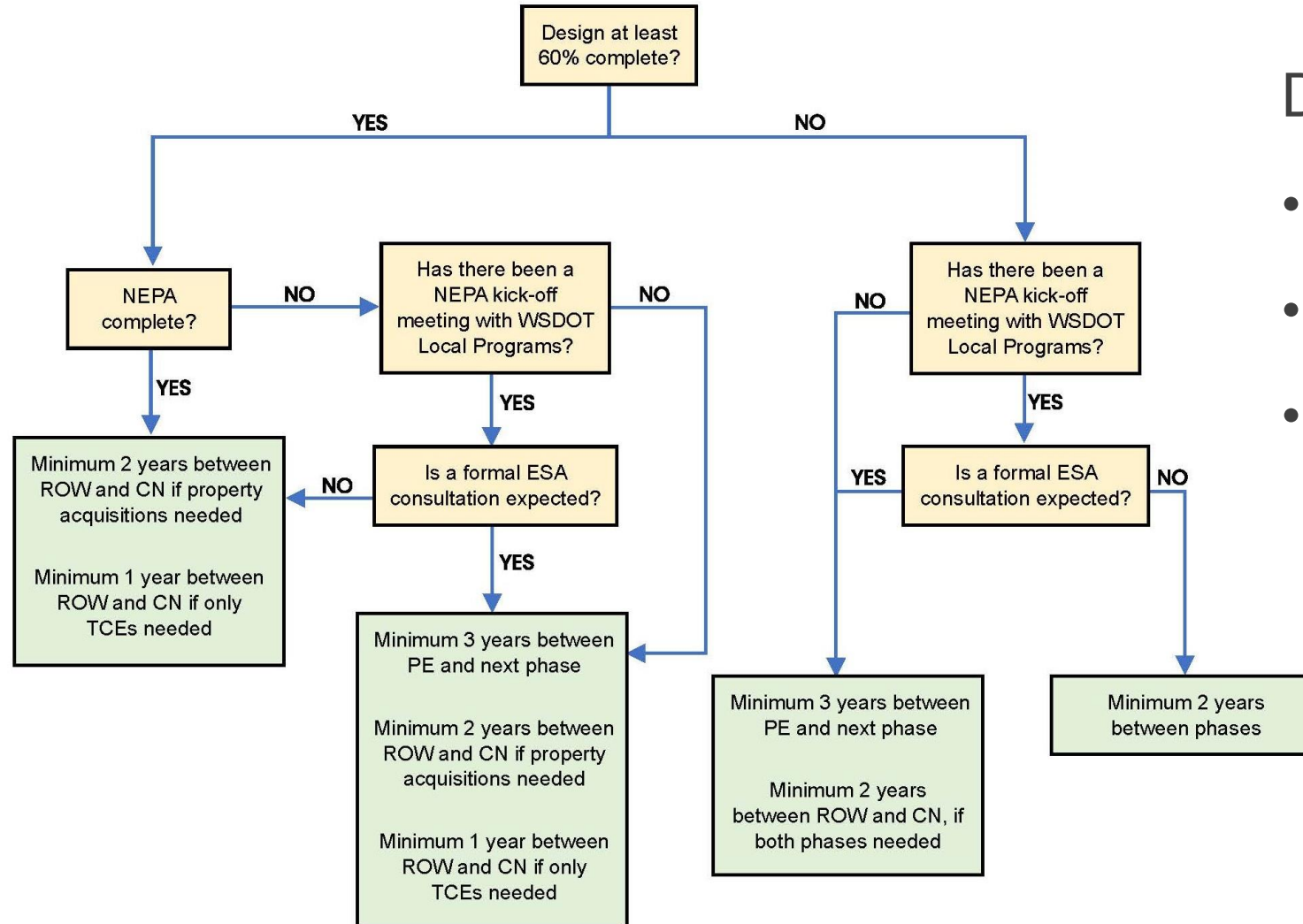
# Project Readiness

## Will the project be ready to use PSRC funds by the requested date?

- Must demonstrate that the major project milestones are scheduled sufficiently to allow the project to deliver on time.
- This includes
  - 1) understanding and identifying the obligation prerequisites that apply to the project,
  - 2) documenting the status of each at the time of application, and
  - 3) providing realistic completion dates for those not yet completed.
- PSRC has developed guidelines for minimum timelines between phases, based on analysis of delivery and extension request trends over last several years



# Project Readiness



Depend on:

- Design status
- Permitting needs
- Right-of-Way needs

## Project Phase Minimum Timeline Guidelines



# Project Readiness

- PSRC has developed guidelines on minimum timelines between phases
- To meet Project Readiness eligibility requirements, project schedule should reflect the minimum timeline defined in this guidance.
- If a sponsor indicates specific circumstances to justify a shorter project timeline, PSRC will review on a case-by-case basis in consultation with WSDOT to make an eligibility determination.
- Note, if you indicate in "other considerations" that the project could accept funds for an earlier program year of 2025 or 2026, the project schedule should support that.

***Reminder.*** Projects that progress faster than planned generally have opportunity to advance a phase to an earlier program year.



# Project Finance

- Funding request...
  - Single phase only
  - In combination plus all other funding must be adequate to fully fund the phase
  - Cannot exceed maximum request amount – varies by funding source and forum
  - Local match funds needed to fully fund the phase must be at least 13.5% of total phase cost
- Financial documentation...
  - Must show that, in combination with the requested funds, all other funds needed to implement the requested phase are secured or reasonably expected
- Full project budget, including secured and/or anticipated funding sources, must be provided



# Evaluation Criteria



# Project Evaluation Criteria

## Recent changes:

- Safety –
  - Safe System Approach + Proven Safety Countermeasures
  - Unscored – commitment to safety planning under SSA
- Equity –
  - Changes recommended by Equity Advisory Committee
- Air Quality / Climate Change –
  - Environmental Health Disparities ranking
- Scoring –
  - Increase to Safety
  - Project Readiness / Financial Plan no longer scored



# Project Evaluation Criteria

Project Evaluation Criteria include the following elements:

- Equity Focus Areas (woven throughout the criteria)
- Support for **development of the center(s)**
  - housing / employment
  - Benefit to user groups
- Mobility and Accessibility
- Outreach and Displacement
- Safety and Security
- Air quality / climate



# Presentation Overview



Criteria

Rubric

Equity  
Resources

Equity  
Examples

# Equity Focus Areas (EFAs)

*Based on foundational work in*

## VISION 2050 & the Regional Transportation Plan (RTP)

Six demographics used to measure and track disparities

People of  
Color

People with  
Low Incomes

People with  
Disabilities

Youth  
(Ages 5–17)

Older Adults  
(Age 65+)

People with  
limited English  
proficiency  
(LEP)

Equity Focus Areas (EFAs)

have higher proportions of members of these groups



# Equity Focus Areas (EFAs)

Figure 1. People of Color, 2019

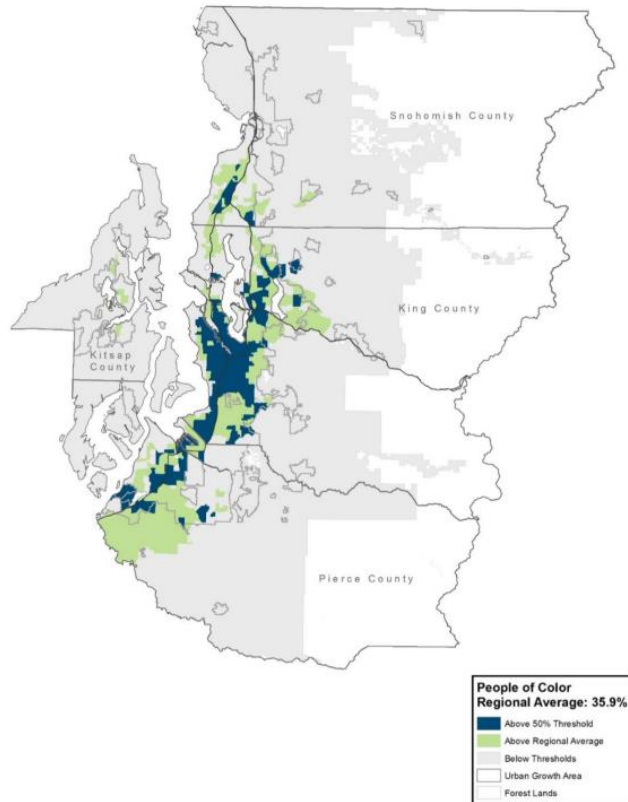


Figure 2. People with Low Incomes, 2019

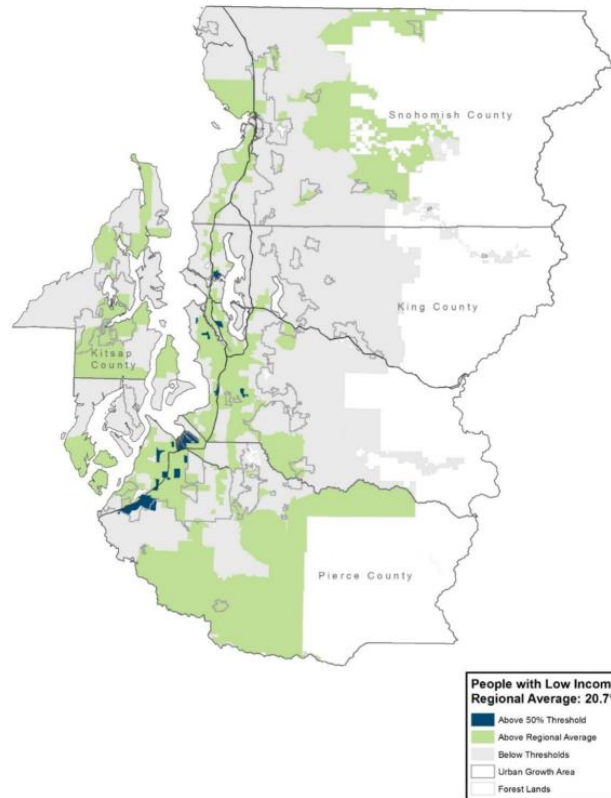
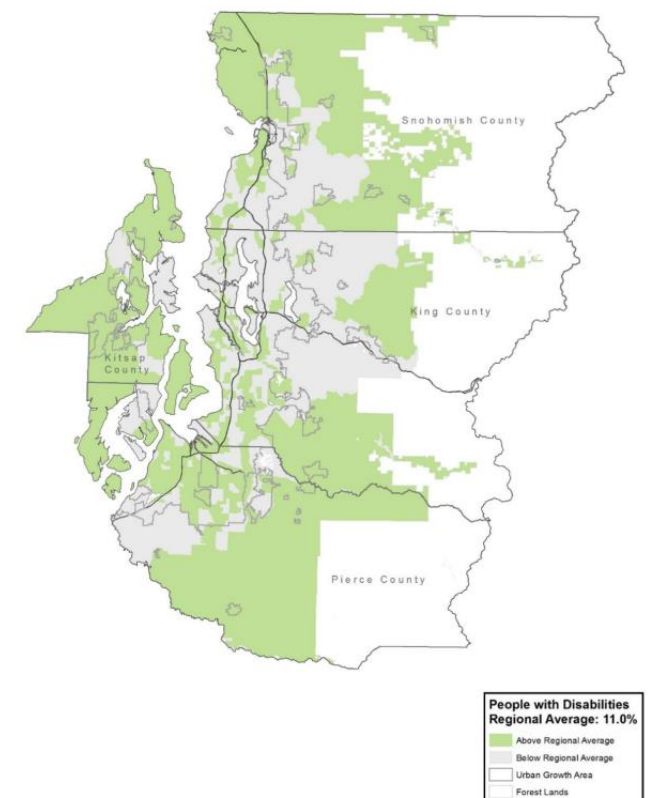


Figure 4. People with Disabilities, 2019



# Equity Focus Areas (EFAs)

Figure 6. Youth, 2019

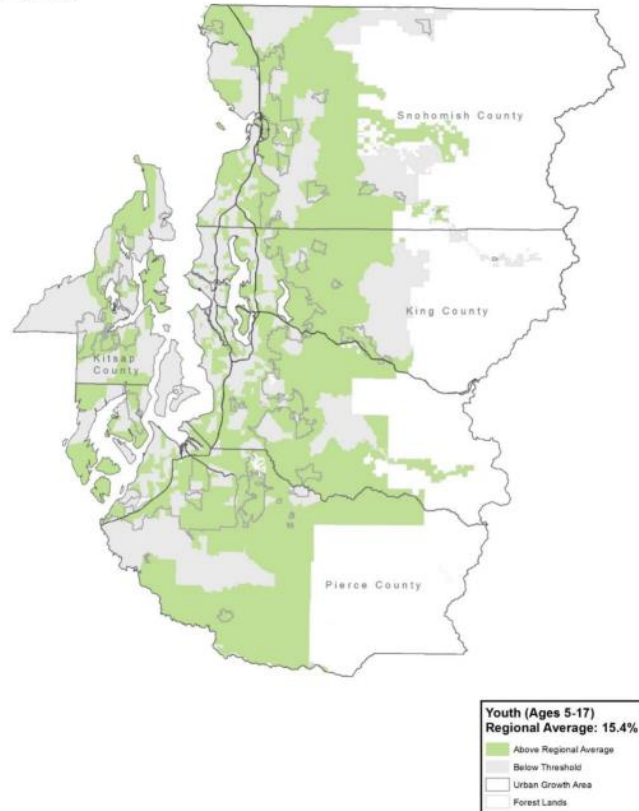


Figure 8. Older Adults, 2019

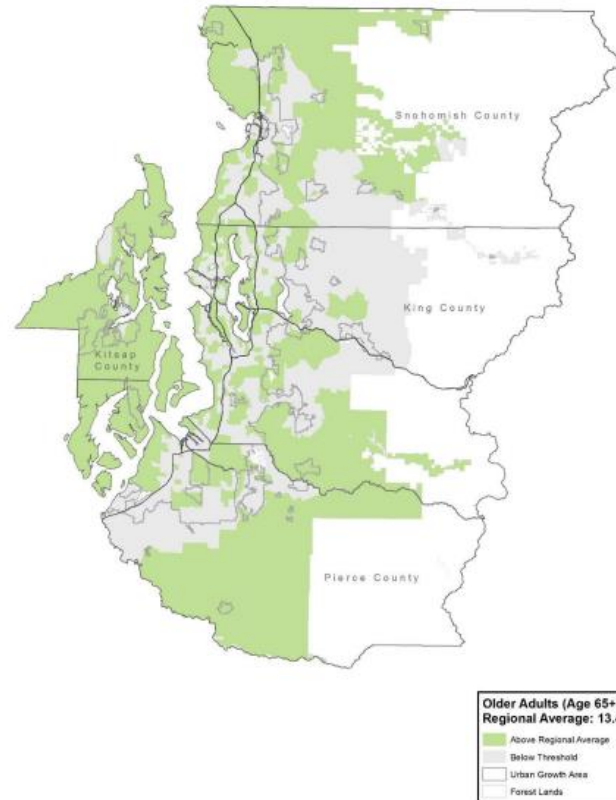
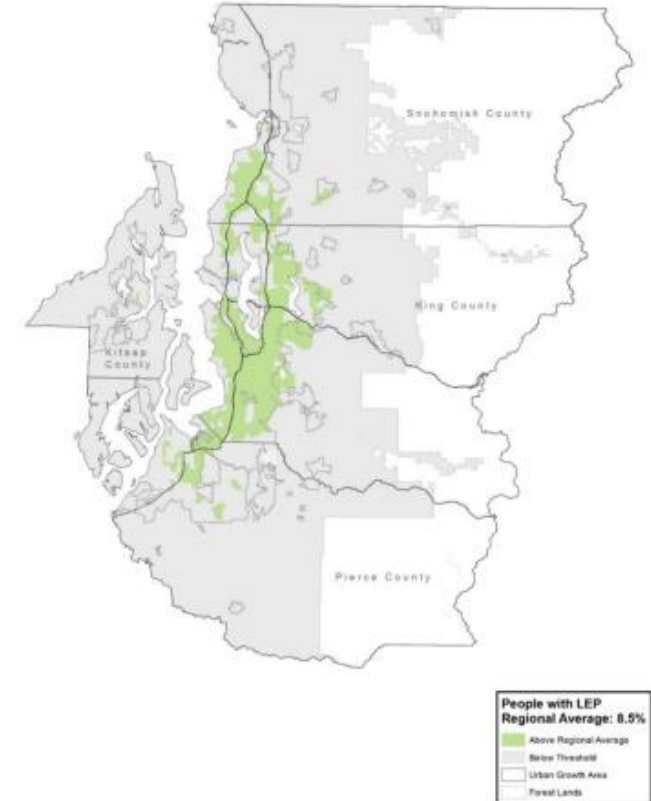


Figure 10. People with LEP, 2019



# Equity Focus Areas (EFAs)

EQUITY FOCUS AREAS categorize places into three groups:

Above 50%

Above the Regional Average

Not above 50% or the Regional Average

People of Color

People with Low Incomes

People with Disabilities

Youth (Ages 5-17)

Older Adults (Age 65+)

People with LEP (Limited English Proficiency)

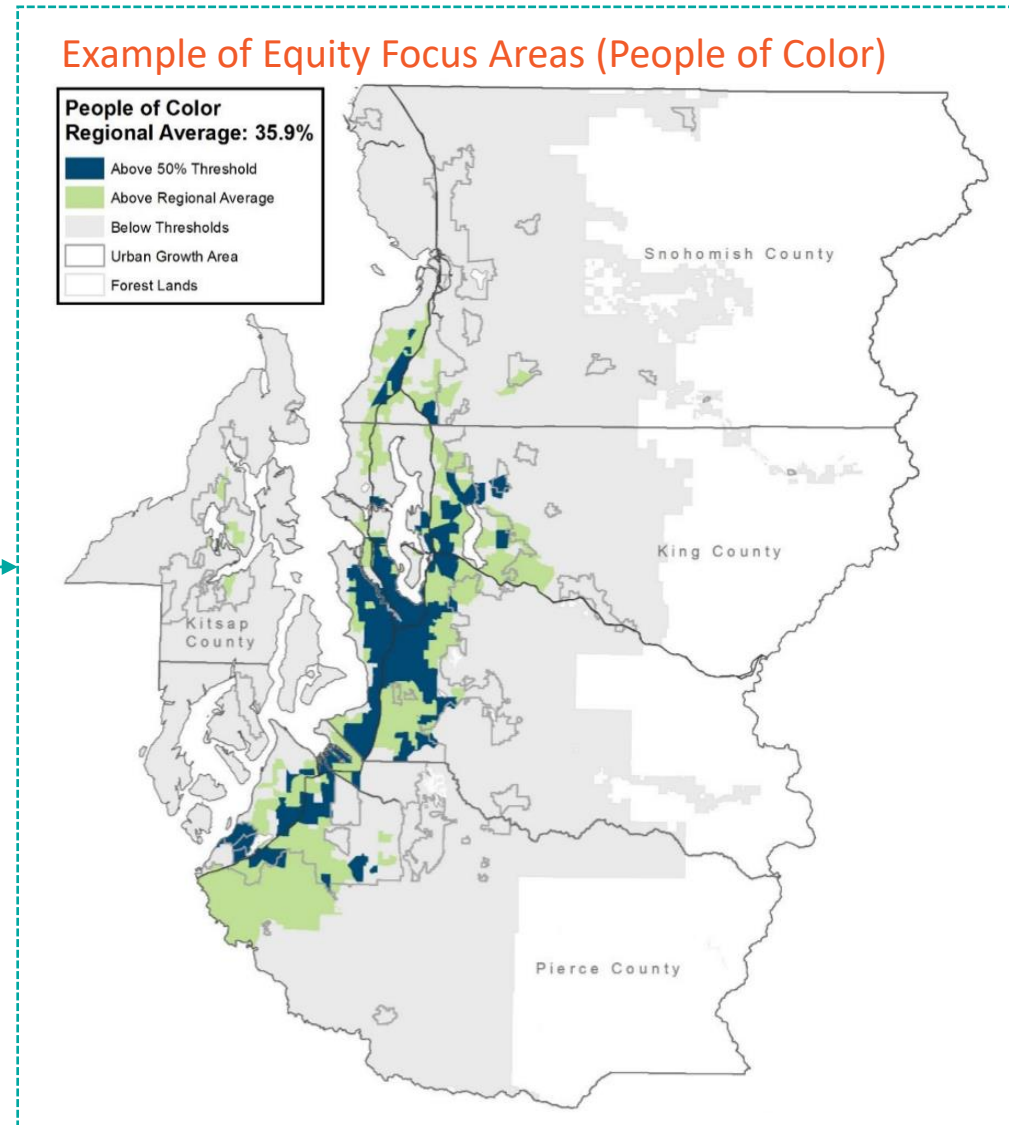


Image: PSRC Draft Regional Transportation Plan (1/13/2022);

Figure 1, [Appendix E](#), page 13

# FHWA Regional Project Evaluation Criteria

## Highlights of Identification of Population Groups

- What Equity Focus Areas (EFAs) will the project serve:
  - People of Color
  - People with Low Incomes
  - People with Disabilities
  - Youth (Ages 5-17)
  - Older Adults (Age 65+)
  - People with LEP (Limited English Proficiency)

CRITERIA
Development of Centers
Mobility and Accessibility
Outreach and Displacement
Safety
Air Quality / Climate Change



# FHWA Regional Project Evaluation Criteria

## Highlights of Identification of Population Groups

- What intersectional Equity Focus Areas (EFAs) will the project serve:
  - People of Color & People with Low Incomes
  - Older Adults (Age 65+) & People with LEP (Limited English Proficiency)
  - People with Disabilities & Older Adults (Age 65+)
  - People with Low Incomes & People with Disabilities
  - People of Color & Youth

CRITERIA
Development of Centers
Mobility and Accessibility
Outreach and Displacement
Safety
Air Quality / Climate Change



# Identification of Population Groups Rubric

## Successful responses...

...Share supporting **data** that shows the size of the EFA that would benefit is **above the regional average**.

# Equity Related Sections

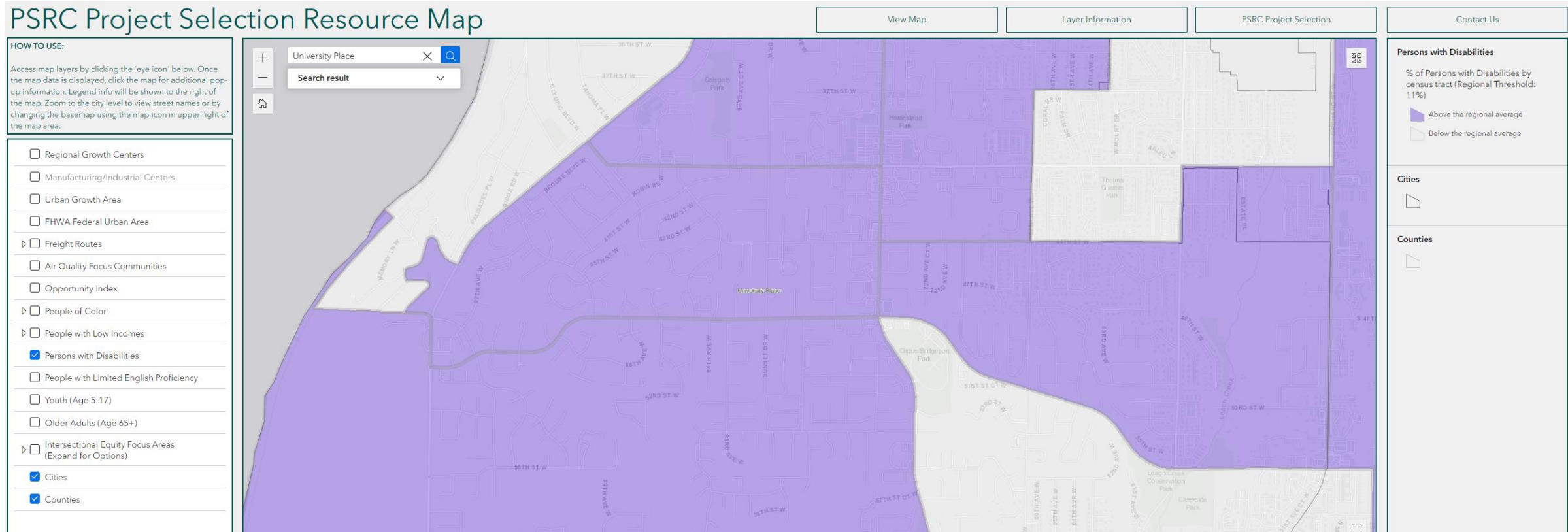
- Using the resources provided in the Call for Projects, **identify** the equity populations (i.e., **Equity Focus Areas (EFAs)**) to be served by the project with supportive data.

CRITERIA
Development of Centers
Mobility and Accessibility
Outreach and Displacement
Safety
Air Quality / Climate Change



# Identification of EFAs

## Project Selection Resource Map



<https://experience.arcgis.com/experience/49821800b2b1460dbc49afb6fe9f021c>



# Example Response

## Identification of EFAs (Good Response)

- “The equity focus areas (EFAs) for the proposed project area include **People with Low Incomes and People with Disabilities**. Below please find a summary of the key findings from the PSRC Project Selection Resource Map:
  - People with Low Incomes: 28% of total population; **above the regional average** 20.7%
  - People with Disabilities: 15% of total population; **above regional average** of 11%



# Example Response

## Identification of EFAs (SCORE: Good R

Identifies the  
Equity Focus  
Area (EFA)

- “The equity focus areas (EFAs) for the proposed project area include **People with Low Incomes and People with Disabilities**. Below please find a summary of the key findings from the BSCG Project Selection Resource Map:
  - People with Low Incomes: 28% of total **regional average** 20.7%
  - People with Disabilities: 15% of total population; **above the regional average** of 11%

Compares  
data for each  
demographic  
to the regional  
average

**above the**

**above regional**

**average** of 11%



# FHWA Regional Project Evaluation Criteria

## Highlights of Development of Centers policy criterion

- How the project supports:
  - existing and planned housing and/or employment densities;
  - development / redevelopment plans and activities of the center;
  - establishment of new and support for existing jobs / businesses
- How the project will expand access to high, middle and/or living wage jobs for the EFAs
- How the project benefits a variety of user groups

CRITERIA
Development of Centers
Mobility and Accessibility
Outreach and Displacement
Safety
Air Quality / Climate Change



# Development of Centers Rubric

## High Scoring Applications...

- **Clearly** support a **significant** amount housing and/or employment activity in the center
- Implement **specific** policies or projects for the center in an adopted plan
- Support **diversity** of **businesses** within the center
- **Expand access** to high, middle and / or living wage **jobs** for the **EFAs**
- Benefit a variety of **user groups**

# Equity Related Sections

- Describe how the project will expand **access** to high, middle and/or living wage **jobs** for the **EFAs** identified **above**.

CRITERIA
Development of Centers
Mobility and Accessibility
Outreach and Displacement
Safety
Air Quality / Climate Change



# Example Response

## Access to Jobs (SCORE: HIGH)

- “A lack of **sidewalks, lighting, street crossing facilities, etc.** has limited people with disabilities in the area from accessing a number of high-wage, middle-wage, and living-wage jobs. The project’s construction of a new sidewalk, lighting, and street crossing improvements **will address this limitation.**
- The neighborhood surrounding the project offers a diverse range of businesses and job opportunities. This includes grocery stores, restaurants, corporate offices, government offices, etc.
- The variety of job types provides an economic ladder for people in the neighborhood to progress within their careers all within walking distance of transit stops and thousands of housing units.”



# Example Response

## Access to Jobs (SCORE: HIGH)

- “A lack of **sidewalks, lighting, street crossing facilities, etc.** has limited people with disabilities in the area from accessing a number of high-wage, middle-wage, and living-wage jobs. The project’s construction of a new sidewalk, lighting, and street crossing improvements will **address this limitation.**
- The neighborhood surrounding the project offers a diverse range of businesses and job opportunities. This includes grocery stores, restaurants, corporate offices, government offices, etc.
- The variety of job types provides an economic ladder for people in the neighborhood to progress within their careers all within walking distance of transit stops and thousands of housing units.”

Notes barrier limiting access to jobs for an EFA

Describes how the project addresses a barrier and increases access



# FHWA Regional Project Evaluation Criteria

## Highlights of Mobility and Accessibility policy criterion

- How the project:
  - completes a gap or removes a barrier
  - reduces conflicts, remedies a problem
  - improves access and circulation for multiple modes
  - provides active transportation opportunities
- Identify the existing disparities or gaps in the transportation system or services for the EFAs
- How the project will benefit the EFAs by improving their mobility

CRITERIA
Development of Centers
<b>Mobility and Accessibility</b>
Outreach and Displacement
Safety
Air Quality / Climate Change



# Mobility and Accessibility Rubric

## High Scoring Applications...

- **Significantly** improve **access** to major destinations within center
- **Significantly** improve **mobility** and enhances active transportation
- **Remedy** a **clearly** demonstrated **problem**
- **Clearly** address **disparities** for EFAs

# Equity Related Sections

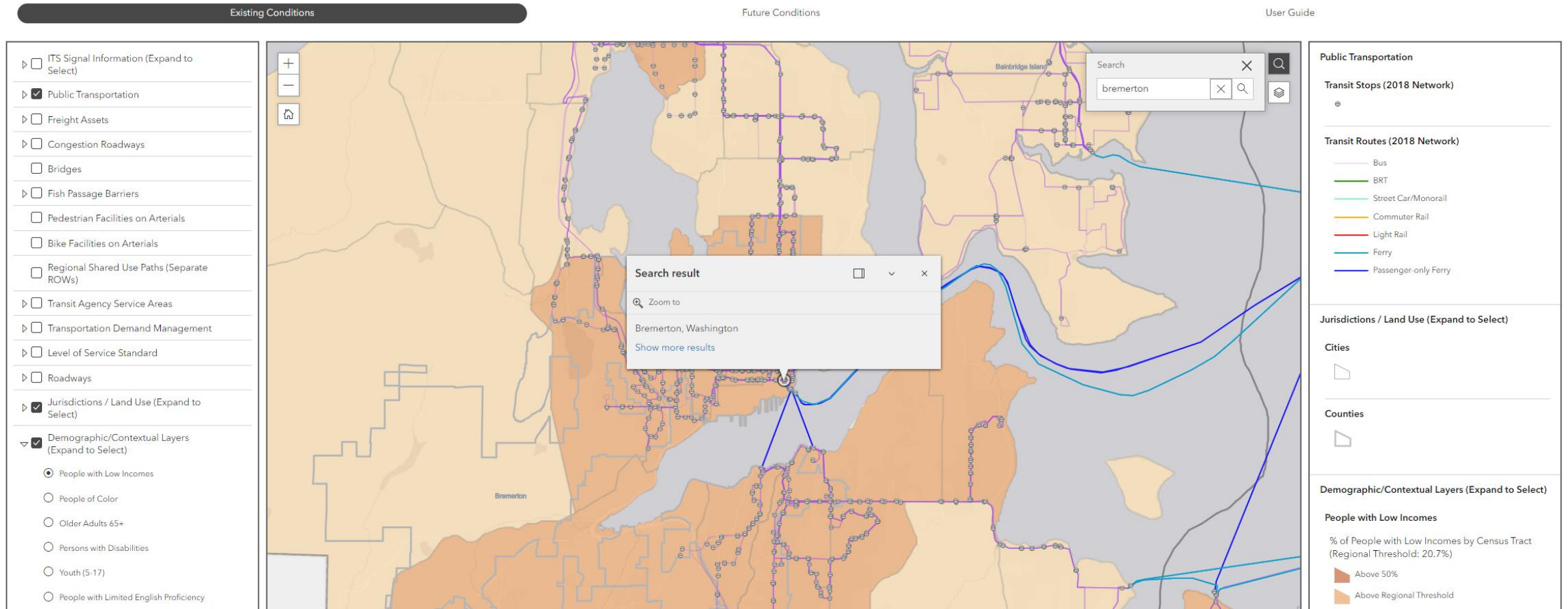
- Identify the **existing disparities or gaps in the transportation system or services for the equity populations identified above ...**
- Describe how the project is **addressing those disparities or gaps** and will provide benefits or positive impacts to these equity populations by **improving their mobility**.

CRITERIA
Development of Centers
<b>Mobility and Accessibility</b>
Outreach and Displacement
Safety
Air Quality / Climate Change



# Identification of Disparities and Gaps

## Transportation System Visualization Tool



# Example Response

## Disparities / Gaps (SCORE: HIGH)

- “As mentioned above, low-income residents serve as the EFA for the proposed project. Although residents in these communities disproportionately attend school and work later in the evening, these communities currently **do not have access** to high-capacity transit to access **educational or employment opportunities** during off peak hours.
- This proposed bus line will **provide service to key educational institutions and employment centers**, it will have frequency and span to serve off peak hours, and it will be located in areas of **low income and affordable housing** where an individual will be able to walk or bike within 5 minutes to access high-capacity transit service.”



# Example Response

Identifies the  
Equity Focus  
Area (EFA)

## Disparities / Gaps (SCORE: HIGH)

- “As mentioned above, **low-income residents** serve as the EFA for the proposed project. Although residents in these communities disproportionately attend school and work later in the evening, these communities currently **do not have access** to high-capacity transit to access **educational or employment opportunities** during off peak hours.
- This proposed bus line will **provide service to key educational institutions and employment centers**, it will have frequency and span to serve off peak hours, and it will be located in areas of **low income and affordable housing** where an individual will be able to walk or bike within 5 minutes to access high-capacity transit service.”



# Example Response

## Disparities / Gaps (SCORE: HIGH)

- “As mentioned above, **low-income residents** serve as the EFA proposed project. Although residents in these communities disproportionately attend school and work later in the evening, these communities currently **do not have access** to high-capacity transit to access **educational or employment opportunities** during off peak hours.
- This proposed bus line will **provide service to key educational institutions and employment centers**, it will have frequency and span to serve off peak hours, and it will be located in areas of **low income and affordable housing** where an individual will be able to walk or bike within 5 minutes to access high-capacity transit service.”

Identifies  
disparities  
experienced  
by EFA

Benefit for  
EFA tied to  
travel



# FHWA Regional Project Evaluation Criteria

## Highlights of Outreach and Displacement policy criterion

- Describe the **public outreach** process that led to the development of the project ... Include specific outreach ... with the **equity populations** ... including activities reflective of best practices from PSRC's **Equitable Engagement Guidance**.
- Describe how this outreach **influenced the development of the project** ...

CRITERIA
Development of Centers
Mobility and Accessibility
<b>Outreach and Displacement</b>
Safety
Air Quality / Climate Change



# Outreach and Displacement

## Outreach Rubric

### High Scoring Applications...

- ...Are shaped by feedback gathered using outreach strategies included in the **PSRCs Equitable Engagement Guidance...**
- ...and **clearly** addresses a **demonstrated problem** or need specifically identified by members of **EFAs**, either from general or project specific outreach.

# Outreach

## Equitable Engagement Guidance

- PSRC's Equitable Engagement Guidance includes strategies for conducting equitable engagement. There are resources linked throughout the document to provide additional information.
- Examples of these strategies include:
  - **Compensating** community members for their time and input
  - Effectively addressing **language barriers**
  - Partnering and co-creating with **community-based organizations**



<https://www.psrc.org/media/5933>



# Example Response

## Outreach (SCORE: MEDIUM)

- “Our outreach included public comment, open houses, online surveys, postcards, and social media posts.
- From the **outreach effort came the vision statement** for the 2018 Long Range Transportation Plan (LRTP) update: Improve our economy and **livability** with **better access**.
- Access is defined as being able to get to what you need: work, school, services, shopping or recreation. Our plans include a world-class high-capacity transit network to ensure easy, **convenient** and **affordable** access for thousands of people every day.”



# Example Response

## Outreach (M)

Fail to describe outreach efforts reflected in the PSRC Equitable Engagement Guidance

No clear connection to outreach with EFAs

- “Our outreach included public comment, open house, online surveys, postcards, and social media posts.
- From the outreach effort came the vision statement for the 2018 Long Range Transportation Plan (LRTP) update: **Improve** our economy and **livability** with **better access**.
- Access is defined as being able to get to what you need: work, school, services, shopping or recreation. Our plans include a world-class high-capacity transit network to ensure easy, **convenient** and **affordable** access for thousands of people every day.”



# FHWA Regional Project Evaluation Criteria

## Highlights of Outreach and Displacement policy criterion

- Using PSRC's **Housing Opportunities by Place** (HOP) tool, identify the **typology** associated with the location of the project and identify the **strategies** the jurisdiction uses to reduce the risk of displacement that are **aligned with those listed for the typology**.

CRITERIA
Development of Centers
Mobility and Accessibility
<b>Outreach and Displacement</b>
Safety
Air Quality / Climate Change



# Outreach and Displacement

## Displacement Rubric

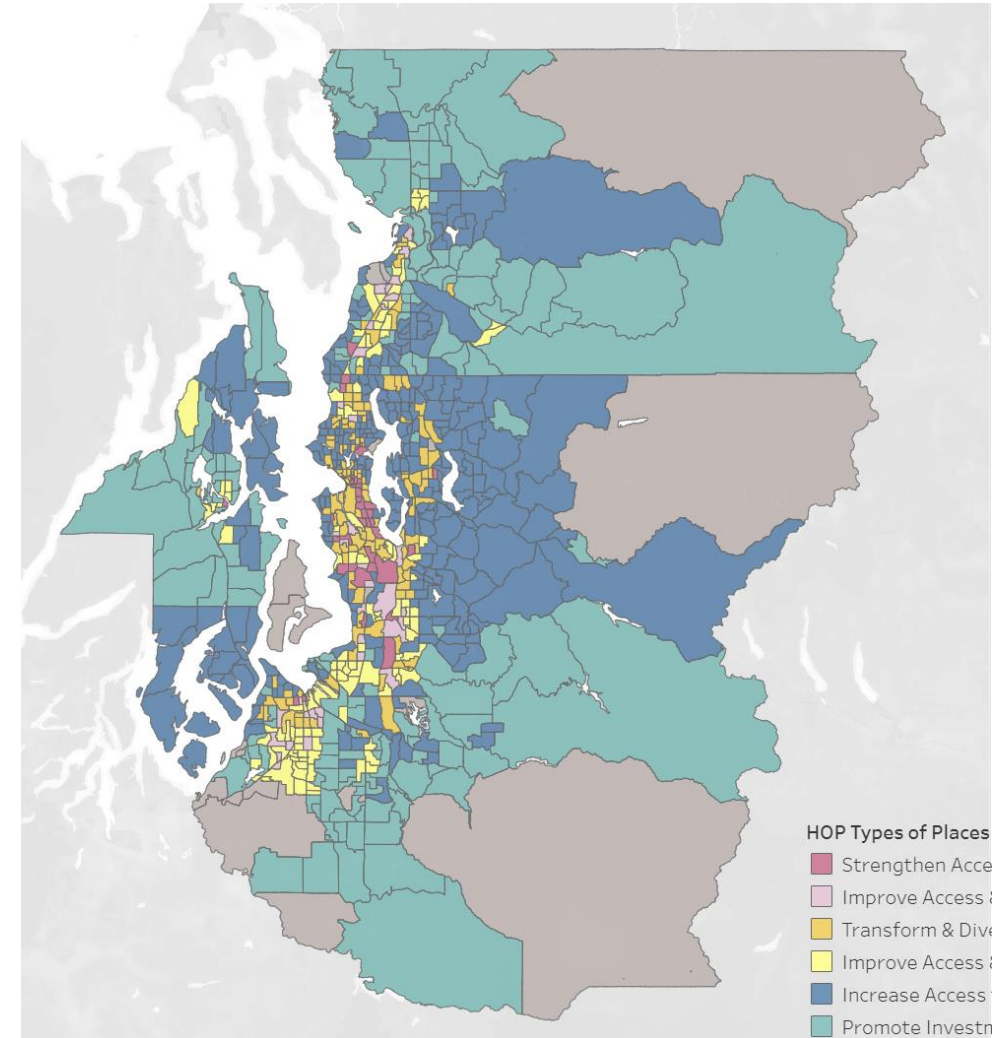
### High Scoring Applications...

- Identify the **Housing Opportunities by Place (HOP) typology** associated with the location of the project...
- ...and demonstrate that it is located in a jurisdiction with **at least one policy within each category in the typology** (Supply, Stability, and Subsidy).

# Displacement

## Housing Opportunities by Place (HOP)

- Housing Opportunities by Place (HOP) is a PSRC tool that uses typologies to classify **anti-displacement strategies** that effectively address housing access and affordability.
- Each Census Tract in the region is categorized into one of six **typologies**:
  - Promote Investment & Opportunity
  - Improve Access & Housing Choices
  - Improve Access & Affordability
  - Increase Access to Single Family Neighborhoods
  - Transform & Diversify
  - Strengthen Access & Affordability



<https://www.psrc.org/our-work/housing-typology>



# Example Response

## Displacement (SCORE: MEDIUM)

- “The project serves areas of high displacement risk / lower opportunity, which falls under the ‘**Improve Access and Affordability**’ typology.
- However, the project will **not lead to displacement.**”



# Example Response

## Displacement (SCORE: MEDIUM)

- “The project serves areas of high displacement / lower opportunity, which falls under the ‘**Improve Access and Affordability**’ typology.
- However, the project will **not lead to displacement.**”

Accurately identified the typology

Failed to note any policies aligned with the typology



# FHWA Regional Project Evaluation Criteria

## Highlights of Safety policy criterion

- How the project addresses safety and security:
  - Identify Proven Safety Countermeasures
  - Protects vulnerable users of the transportation system
  - Reduces reliance on enforcement and/or designs for decreased speeds
  - Is informed by adopted safety policies within your jurisdiction
  - Will address safety issues currently being experienced by EFAs

CRITERIA
Development of Centers
Mobility and Accessibility
Outreach and Displacement
<b>Safety</b>
Air Quality / Climate Change



# FHWA Regional Project Evaluation Criteria

Continued – Highlights of Safety policy criterion

- **Not Scored:**
  - Does your agency commit to working under a Safe System Approach?
  - Describe your agency's current and future safety planning activities

CRITERIA
Development of Centers
Mobility and Accessibility
Outreach and Displacement
<b>Safety</b>
Air Quality / Climate Change



# Safety Rubric

## High Scoring Applications...

- Identify and address a **clearly** demonstrated **safety** issue
- Incorporate one or more FHWA's **Proven Safety Countermeasures** that address vulnerable users, reduce enforcement, or decrease speeds
- Improve **safety** for the **EFAs**
- **Implement** agency's adopted **safety policies**

# Equity Related Sections

- **Specific to the equity populations identified above, describe how the project will improve safety and/or address safety issues currently being experienced by these communities.**

CRITERIA
Development of Centers
Mobility and Accessibility
Outreach and Displacement
<b>Safety</b>
Air Quality / Climate Change



# Example Response

## Safety (SCORE: HIGH)

- “Older adults serve as the Equity Focus Area (EFA) for this project and face disproportionate risks while walking and rolling. They are **twice as likely to experience a fatal crash** as people under the age of 65 in the project area.
- The proposed project is designed specifically to address safety disparities like these by creating a more complete and accessible pedestrian network. **Enhanced signing and pavement markers, high visibility crosswalks, bulbouts, and leading pedestrian interval (LPI)** are proven traffic safety countermeasures to reduce the likelihood and severity of collisions, and should help reduce the aforementioned disparities.”



# Example Response

## Safety (SCORE: HIGH)

- “Older adults serve as the Equity Focus Area (EFA), and they are clearly identified the safety issue for the EFA. They face disproportionate risks while walking and rolling. They are **twice as likely to experience a fatal crash** as people under the age of 18 in the project area.
- The proposed project is designed specifically to address safety disparities like these by creating a more complete and accessible pedestrian network. **Enhanced signing and pavement markers, high visibility crosswalks, bulbouts, and leading pedestrian interval (LPI)** are proven traffic safety countermeasures to reduce the likelihood and severity of collisions, and should help reduce the aforementioned disparities.”

Clearly identified the safety issue for the EFA

Details how the project addresses the safety issue for the EFA



# FHWA Regional Project Evaluation Criteria

## Highlights of Air Quality / Climate Change criterion

- Evaluating the project's potential to reduce emissions from:
  - Reducing trips
  - Reducing vehicle miles traveled
  - Improving travel flow / reducing vehicle idling
  - Converting vehicles to cleaner fuels
- Location relative to diesel pollution and other disproportionate impacts

CRITERIA
Development of Centers
Mobility and Accessibility
Outreach and Displacement
Safety
Air Quality / Climate Change



# FHWA Regional Project Evaluation Criteria

## Highlights of Air Quality / Climate Change criterion

- CMAQ projects only:
  - Air quality score based on cost effectiveness
  - (CMAQ \$ requested / Useful life) / Emissions reduced

CRITERIA
Development of Centers
Mobility and Accessibility
Outreach and Displacement
Safety
Air Quality / Climate Change



# Air Quality / Climate Change Rubric

## High Scoring Applications...

- **Substantially reduce** fine particulates from diesel exhaust or will substantially reduce **emissions** of greenhouse gases and other air pollutants...
- ...and the air quality benefits will occur by **2035**.

# Equity Related Sections

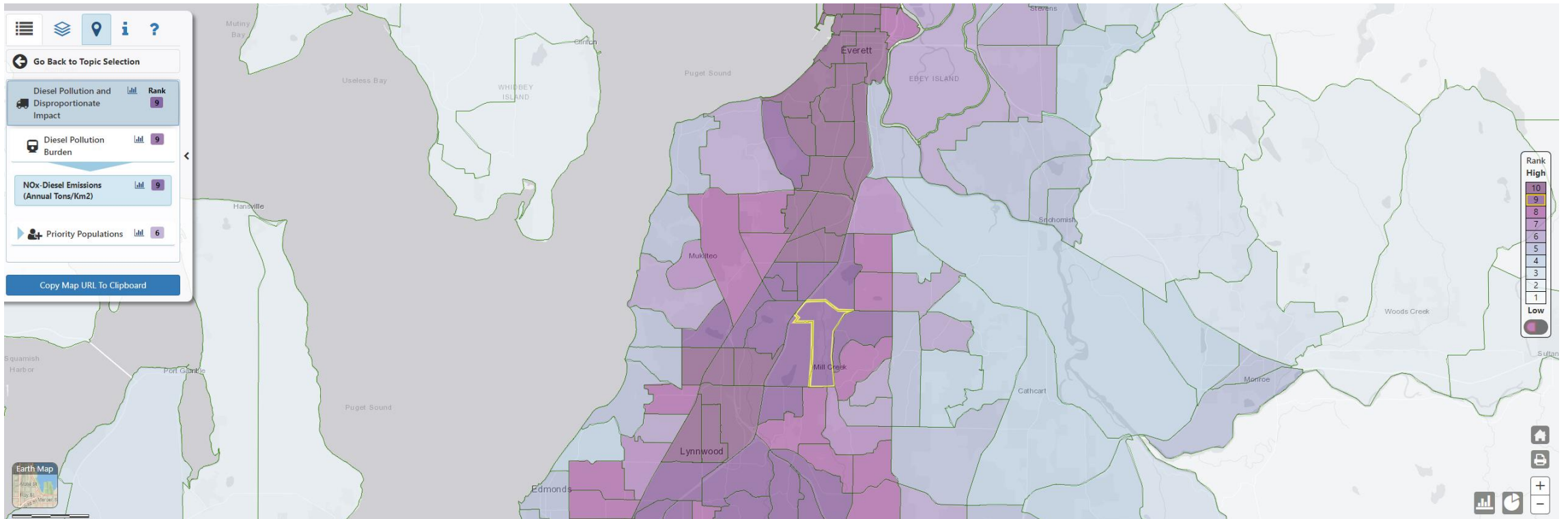
- Is the project located in an area identified as a 7 of 10 for diesel pollution and disproportionate impacts in the **Washington Environmental Health Disparities map?**

CRITERIA
Development of Centers
Mobility and Accessibility
Outreach and Displacement
Safety
Air Quality / Climate Change



# Diesel Pollution and Disproportionate Impacts

## Washington Environmental Health Disparities Map



<https://doh.wa.gov/data-and-statistical-reports/washington-tracking-network-wtn/washington-environmental-health-disparities-map>



# Online Forms and Resources



# Tips for Completing Applications

- Be clear and concise
  - Provide a clear scope of work; how will the funds be used?
- Be thorough – answer every question, address every criterion
  - Respond to each bullet
  - Don't assume scoring team knows your project or your area
- Maps and graphics help illustrate your project and its location
- Show the connection to the criteria!
  - It's not enough to have a good project; to score well, your project must align well with the established criteria
- Delivery matters – make sure your schedule and your financial plan are feasible



# Online Forms & Resources

- Policy Framework
- Eligibility information
- Resource maps
- Funding amounts available
- Guidance
  - Screening form & application checklists/guidance
  - Equity
  - Safety
  - Air Quality
  - Project Readiness
  - Financial Constraint



# Online System for Screening Forms & Applications

## Key Features

- Use regular TIP Application username and password
- Can save and return later
- Questions based on which category selected
- System will prompt if errors or blanks

## Key Tips

- Provide complete answers
- Make use of checklists and guidance that has been provided
- Upload relevant supporting attachments

<https://www.psrc.org/our-work/funding/project-selection/fhwa-and-fta-regional-funding>



# Schedule

## Important Deadlines

### FHWA Regional Process

- ♦ March 6th: Eligibility Screening Forms Due
- ♦ April 8th: Application Deadline
- ♦ Sponsors will present their projects on April 25th and 26th

The Regional Project Evaluation Committee Recommendations Meeting is **May 23rd** and **May 24th**

### FHWA Countywide Process

- ♦ **March 11th:** Eligibility Screening Forms Due for **all Countywide** Processes
- ♦ Refer to specific Countywide Call for Project page for application deadlines

Countywide recommendations submitted to PSRC by June 28th

### FTA Earned Share Process

- ♦ April 19th: Project Submittal Deadline

### FTA Equity Process

- ♦ April 19th: Project Submittal Deadline

The Transportation Operators Committee Recommendations Meeting is **June 26th**

## Regional TIP Development

July 5th:	July 11th:	July 25th:	Sept — Oct:	Oct 24th:	Jan 2025:
Deadline for all TIP project submittals	TPB recommendation meeting	EB approves recommendations	Draft TIP released for public comment	EB adopts 2025—2028 Regional TIP	Final state and federal approval





# Questions?

Please type them into the “Q & A” box



# Thank You!

**Charles Patton, PhD**

Program Manager, Equity Policy & Initiatives  
cpatton@psrc.org

**Jennifer Barnes, PE**

Program Manager, Transportation Planning  
jbarnes@psrc.org

**Doug Cox, AICP**

Principal Planner, Transportation Planning  
dcox@psrc.org

**Miles Stepleton**

Assistant Planner, Transportation Planning  
mstepleton@psrc.org

