



Puget Sound Regional Council

Growth Management Policy Board

Thursday, March 7, 2024 • 10:00 a.m. – 12:00 p.m.

Hybrid Meeting – PSRC Board Room: 1201 Third Avenue, Suite 500, Seattle, WA 98101

Watch or listen

- Watch the meeting live at <https://www.psrc.org/watch-meetings>
- Listen by phone 1-888-475-4499, Meeting ID: 834 3848 5752, Passcode: 733446

Attend

- The public can attend meetings at PSRC's offices – PSRC has moved!
 - [New location](#): 1201 Third Avenue, Suite 500, Seattle, 98101
- PSRC staff will be available to provide floor access 30 minutes before the meeting's start time and up to 15 minutes after the meeting's start time.
- If you arrive after these times, please call 206-464-7090 for assistance.

Provide public comment

- **Public comment must relate to an action or discussion item on the agenda. Each member of the public will have 2 minutes to speak.**
- **In-person**
Public comment may be made in person at PSRC's office.
- **Comment during the meeting by Zoom or phone**
[Registration](#) is required and closes at 8:00 a.m., the day of the meeting. Late registrations will not be accepted.
- **Written comments**
Comments may be submitted via email to hculver@psrc.org by 8:00 a.m. the day of the meeting. Comments will be shared with board members.

Public comments are public records and may be subject to disclosure pursuant to the Public Records Act, RCW Chapter [42.56](#).

1. Call to Order (10:00) – Councilmember Ed Prince, Chair

2. Communications and Public Comment

Public comment must relate to an action or discussion item on the agenda.

3. Report of the Chair

4. Director's Report

5. Consent Agenda - Action Items (10:15)

- a. Approve Minutes of Growth Management Policy Board Meeting held February 1, 2024

6. Discussion Item (10:20)

- a. Puget Sound Recovery Update - *Erika Harris, PSRC; Larry Epstein, Puget Sound Partnership; Diane Lenius, City of Poulsbo; Shawn Alire, Kitsap County*

7. Discussion Item (11:00)

- a. Zoning for Early Childhood Education – *Barbara Rosen, Enterprise Community Partners; Maria Tobin, South Sound Military and Community Partnership*

8. Information Items

- a. 2024 GMPB Meeting Schedule
- b. VISION 2050 Award 2024 Nomination Flyer
- c. 2024 General Assembly Flyer
- d. SSMCP Local Plan Guidance

9. Next Meeting: April 4, 2024, 10:00 a.m. – 12:00 p.m.

Major Topics for April:

- Puget Sound Clean Air Agency
- Puget Sound Energy Community Solar Program

10. Adjourn (12:00)

Board members please submit proposed amendments and materials prior to the meeting for distribution. Organizations/individuals may submit information for distribution. Send to Heather Culver, e-mail hculver@psrc.org, or mail.

For language or ADA assistance at PSRC board meetings, please contact us at 206-464-7090 at least 72 hours in advance of the meeting. For TTY-based telecommunications relay service dial 711.

العربية | Arabic, 中文 | Chinese, Deutsch | German, Français | French, 한국어 | Korean, Русский | Russian, Español | Spanish, Tagalog, Tiếng việt | Vietnamese, visit <https://www.psrc.org/contact/language-assistance>.



Puget Sound Regional Council

MINUTES

Growth Management Policy Board

February 1, 2024

Remote Meeting

[To watch a video of the meeting and hear the discussion, go to <https://www.psrc.org/watch-meetings>]

CALL TO ORDER

The meeting was called to order at 10:01 a.m. by Councilmember Ed Prince, Chair.

COMMUNICATIONS AND PUBLIC COMMENT

There was no public comment.

CHAIR'S REPORT

Chair Prince welcomed new board members and thanked outgoing members for their participation on the board.

DIRECTOR'S REPORT

Growth Management Director Paul Inghram gave an update on state Department of Commerce grants and application deadlines, and the recently published climate planning guidance also available from Commerce.

Paul commented on the successful move of PSRC to the new office space at 1201 Third Avenue and welcomed the board to the first hybrid meeting in the new office.

CONSENT AGENDA

- a. Approve Minutes of Growth Management Policy Board Meeting held January 4, 2024.

ACTION: It was moved and seconded (Buxton/Bushnell) to adopt the Consent Agenda. Motion passed.

STATE LEGISLATIVE AGENDA

PSRC Director of Government Relations and Communications Robin Koskey gave an update on the bills moving through the legislature and introduced Carol Naito and Lauren Engel of PSRC to present PSRC's transit-oriented development interactive mapping tool.

REGIONAL CENTERS MONITORING SCOPE OF WORK

PSRC Senior Planner Maggie Moore presented the board with an overview of the Regional Centers Monitoring Scope of Work, a timeline for the work and asked the board for feedback and direction to proceed on the work. Board members provided feedback on the scope of work and agreed the project is ready to proceed.

EQUITY ADVISORY COMMITTEE WORK PLAN

Charles Patton, PSRC's Program Manager for Equity Policy and Initiatives, shared information on the Equity Advisory Committee outreach and selection process, introduced new committee members, gave an overview of the Transportation Equity Pilot, the Equity Tracker and potential topics for the committee in 2024. Charles addressed questions from the board and discussed more in depth the role that EAC members may have with GMPB in the future.

NEXT MEETING

The next GMPB board meeting is scheduled for March 7, 2024.

Topics include:

- Puget Sound Partnership

ADJOURN

The meeting adjourned at 11:24 a.m.

GUESTS AND PSRC STAFF PRESENT (As determined by staff.)

Kathryn Johnson, PSRC
 Piset Khuon, PSRC
 Paul Inghram, PSRC
 Maggie Moore, PSRC
 Liz Underwood-Bultmann, PSRC
 Robin Koskey, PSRC
 Erika Harris, PSRC
 Carol Naito, PSRC
 Lauren Engle, PSRC
 Ben Bakkenta, PSRC

Brian Lee, PSRC
Laura Benjamin-LaPitz, City of Bellevue

Attachments:
February 1, 2024, GMPB Attendance Roster

Growth Management Policy Board - February 1, 2024							
Voting Members			✓	Non-voting Members			✓
King County	2	CM Sarah Perry	1	Associate Members			
		Vacant		Alderwood Water and Wastewater District	1	COM Paul McIntyre	1
						Vacant	
Seattle	2	CM Tammy Morales		Thurston Regional Planning Council	1	COM Chris Stearns	
		CM Maritza Rivera				Marc Daily Alt	
		CM Tanya Woo, Alt		Public Agency Members			
Bellevue	1	CM Janice Zahn	1	Commerce	1	Dave Andersen	1
		CM Dave Hamilton, Alt	1			Mark Barkley Alt	
Cities/Towns	3	DM Traci Buxton, Des Moines	1	Public Health Agencies	1	Dr. Gib Morrow, Kitsap Public Health District	1
		CM Ed Prince, Renton - Chair	1			Vacant	
		CM Melissa Stuart, Redmond	1	PSRC Committees			
		CM Kelli Curtis, Alt - Kirkland	1	Regional Staff Committee	1	Andrea Spencer	1
		CM Pam Stuart, Alt - Sammamish	1			Arun Sambataro, Alt	1
		CP Lindsey Walsh, Alt - Issaquah	1	Equity Advisory Committee	1	Shannon Turner	1
Kitsap County	1	COM Katie Walters				Lisa Espinosa, Alt	
		COM Christine Rolles, Alt		Private/Civic Members-Business/Labor			
Bremerton	1	MYR Greg Wheeler	1	Master Builders of King and Snohomish Counties	1	Jennifer Anderson	1
		CP Jennifer Chamberlin				Vacant	
Cities/Towns	1	DM Jon Quitslund, Bainbridge Isl	1	Natural and Built Environments (exp.	1	Angela Rozmyn	1
		CM Joe Deets, Bainbridge Isl, Alt				Robert Pantley Alt	
Pierce County	1	CM Robyn Denson	1	Vacant	1	Vacant	
		CM Paul Herrera, Alt				Vacant Alt	
Tacoma	1	CM Joe Bushnell	1	Private/Civic Members-Community/Environment			
		CM Sarah Rumbaugh, Alt		Futurewise (reapplying)	1	Alex Brennan	1
Cities & Towns	1	CM Nikki Bufford, Fircrest	1			Tiernan Martin Alt	
		MYR Josh Penner, Alt - Orting		Housing Development Consortium - Seattle/King	1	Patience Malaba	
Snohomish County	1	CM Megan Dunn - Vice Chair	1			Jesse Simpson Alt	
		CM Sam Low, Alt		Vacant	1	Vacant	
Everett	1	CM Scott Bader	1			Vacant Alt	
		MYR Cassie Franklin, Alt					
Cities/Towns	1	CM Michael Dixon, Mukilteo	1				
		MYR Pro Tem Bryan Wahl, Alt - Mntlake Terr.		Non Voting	12		9
Federally Recognized Tribes							
Muckleshoot Indian Tribe	1	Vacant					
Puyallup Tribe of Indians	1	Andrew Strobel					
		Jennifer Keating Alt					
Suquamish Tribe	1	Rich Purser					
		Alison Osullivan Alt					
Statutory Members							
Ports	1	COM Don Meyer, Tacoma					
		COM Deanna Keller, Alt - Tacoma				Abbreviations	
WSDOT	1	Jeff Storrar	1			CM Councilmember	
		JoAnn Schueler, Alt				COM Commissioner	
						CP Council President	
Voting	22	(Quorum = 11) Quorum Total	14			DM Deputy Mayor	



Puget Sound Regional Council

March 7, 2024

DISCUSSION ITEM

To: Growth Management Policy Board

From: Paul Inghram, Director of Growth Management

Subject: **Puget Sound Recovery Update**

IN BRIEF

Staff from the Puget Sound Partnership, Kitsap County, and the City of Poulsbo will brief the Growth Management Policy Board on Puget Sound recovery efforts. Staff will seek board feedback on how the Partnership and PSRC can further support local work.

DISCUSSION

Though beautiful from a distance, the Puget Sound is facing serious challenges. Human actions over the past few centuries have damaged the Puget Sound and surrounding water bodies by degrading water quality and wildlife habitat. Land use and transportation development practices have the potential to either degrade or improve water quality and hydrology.

Puget Sound recovery is a goal of [VISION 2050](#) and is addressed through several policies and actions in the plan. For example, MPP-En-17 calls for maintaining and restoring natural hydrological functions and water quality to recover the health of the Puget Sound. Policy MPP-En-18 seeks to reduce stormwater impacts from transportation and development through watershed planning, redevelopment and retrofit projects and low-impact development. En-Action-2 directs PSRC and the Puget Sound Partnership to coordinate to support watershed planning to inform land use, transportation and stormwater planning and projects that improve the health of Puget Sound. And En-Action-3, a local action, calls for jurisdictions within a watershed to participate together in watershed planning and integrate land use, transportation, stormwater and related disciplines across the watershed.

To implement En-Action-2, PSRC coordinates with Puget Sound Partnership, the state agency leading the collective effort to restore and protect Puget Sound. Larry Epstein, the Partnership's Deputy Director, will provide an update to the board on the latest findings from the [State of the Sound](#) and highlight opportunities for PSRC members to support planning and implementation of the [Action Agenda for Puget Sound](#), the shared plan for advancing protection and restoration efforts across the region. They will also describe [funding opportunities](#) for projects and activities that support Puget Sound recovery, including a focus on aligning transportation and Puget Sound restoration work.

Shawn Alire, Kitsap County's Stormwater Retrofit & Asset Manager, will describe some of the county's work to improve water quality. Among other notable efforts, Kitsap County has pioneered the development of [stormwater parks](#). City of Poulsbo Public Works Director, Diane Lenius, will share some of Poulsbo's stormwater, culvert replacement and habitat restoration projects. Kitsap County and Poulsbo coordinate with each other and local Tribes in many of these efforts and participate in the West Sound Partners for Ecosystem Recovery, the area's salmon recovery and local integrating organization.

VISION 2050 supports the work of local jurisdictions and the Puget Sound Partnership to promote a coordinated approach to watershed planning and restoring the health of Puget Sound. PSRC's guidance on [Integrating Stormwater Solutions into Comprehensive Plans](#) was developed to support [Puget Sound recovery](#) through comprehensive planning.

Discussion Questions

At the March board meeting, the board is encouraged to direct staff:

- What assistance and resources can the Puget Sound Partnership and PSRC provide to local governments to help them implement planning and projects to improve the health of Puget Sound?

NEXT STEPS

The board is encouraged to share information with interested staff, share requests for support with PSRC and Puget Sound Partnership staff and integrate support for Puget Sound recovery into comprehensive plans and other work.

For additional information, please contact Erika Harris, AICP, Senior Planner, at eharris@psrc.org or 206-464-6360.



Puget Sound Regional Council

March 7, 2024

DISCUSSION ITEM

To: Growth Management Policy Board
From: Paul Inghram, Director of Growth Management
Subject: **Zoning for Early Childhood Education**

IN BRIEF

Barbara Rosen, a consultant for Enterprise Community Partners, and Maria Tobin, representing the South Sound Military and Communities Partnership, will provide the Growth Management Policy Board with information about barriers to developing early childhood education facilities.

DISCUSSION

Childcare is a critical component of our communities. Childcare enhances children's emotional and academic development and enables parents' ability to return to work. Like housing, costs for land and buildings are escalating across the region, making the siting and development of early childhood care facilities increasingly challenging. The lack of childcare facilities makes access to care more difficult and contributes to the high cost of childcare.

Currently, childcare facilities may be allowed in some commercial zones, but often local plans don't fully address a community's childcare needs. Access to childcare interrelates with housing, transportation and employment. When a parent has to drive farther to access childcare, it results in increased congestion and more time wasted. Lack of access and high costs may mean a parent dropping out of the workforce, while access to convenient, affordable childcare can create economic advantages for families.

The work of Enterprise Community Partners and the South Sound Military and Communities Partnership explores how land use regulations may create unintended barriers to developing new childcare facilities and how addressing those barriers could improve the childcare opportunities for families.

For additional information, please contact Paul Inghram, Director of Growth Management, at pinghram@psrc.org, or Barbara Rosen at br@barbararosenconsulting.com.

2024 PSRC Growth Management Policy Board Meetings

January						
S	M	T	W	T	F	S
	1	2	3	4	5	6
7	8	9	10	11	12	13
14	15	16	17	18	19	20
21	22	23	24	25	26	27
28	29	30	31			

February						
S	M	T	W	T	F	S
				1	2	3
4	5	6	7	8	9	10
11	12	13	14	15	16	17
18	19	20	21	22	23	24
25	26	27	28	29		

March						
S	M	T	W	T	F	S
				7	1	2
3	4	5	6	14	15	16
10	11	12	13	21	22	23
17	18	19	20	28	29	30
24	25	26	27			
31						

April						
S	M	T	W	T	F	S
	1	2	3	4	5	6
7	8	9	10	11	12	13
14	15	16	17	18	19	20
21	22	23	24	25	26	27
28	29	30				

May						
S	M	T	W	T	F	S
			1	2	3	4
5	6	7	8	9	10	11
12	13	14	15	16	17	18
19	20	21	22	23	24	25
26	27	28	29	30	31	

June						
S	M	T	W	T	F	S
				6	7	1
2	3	4	5	13	14	8
9	10	11	12	20	21	15
16	17	18	19	27	28	22
23	24	25	26			29
30						

July						
S	M	T	W	T	F	S
	1	2	3	4	5	6
7	8	9	10	11	12	13
14	15	16	17	18	19	20
21	22	23	24	25	26	27
28	29	30	31			
July Meeting TBD						

August						
S	M	T	W	T	F	S
				1	2	3
4	5	6	7	8	9	10
11	12	13	14	15	16	17
18	19	20	21	22	23	24
25	26	27	28	29	30	31
No meeting in August						

September						
S	M	T	W	T	F	S
1	2	3	4	5	6	7
8	9	10	11	12	13	14
15	16	17	18	19	20	21
22	23	24	25	26	27	28
29	30					

October						
S	M	T	W	T	F	S
		1	2	3	4	5
6	7	8	9	10	11	12
13	14	15	16	17	18	19
20	21	22	23	24	25	26
27	28	29	30	31		

November						
S	M	T	W	T	F	S
				7	1	2
3	4	5	6	14	15	16
10	11	12	13	21	22	23
17	18	19	20	28	29	30
24	25	26	27			

December						
S	M	T	W	T	F	S
1	2	3	4	5	6	7
8	9	10	11	12	13	14
15	16	17	18	19	20	21
22	23	24	25	26	27	28
29	30	31				
No meeting in December						

Meetings are held 10:00 a.m. - 12:00 p.m. the first Thursday of the month. As needed, the Transportation Policy Board and the Growth Management Policy Board meet in joint session to coordinate activities and make decisions/recommendations.

Meeting dates and times are subject to change. If a meeting is changed or cancelled, GMPB members and alternates will be notified. Updated meeting dates are listed at <https://www.psrc.org>.

VISION 2050 AWARDS

Call for Nominations 2024

The Puget Sound Regional Council is seeking nominations for the VISION 2050 Awards Program through April 1, 2024.

The VISION 2050 Awards celebrate progress to enhance the region's communities and natural environment while advancing equity and opportunity for all. The awards recognize innovative work to create a better future for central Puget Sound.

We welcome nominations in the following categories:

On the Ground

Projects that show VISION 2050 in action today, including housing, mixed-use development or redevelopment, expanding access to opportunity, open space preservation, and transportation investments.

Planning Ahead

Comprehensive or subarea plans, economic development plans, climate action plans, equity initiatives, design guidelines, outreach programs, and other similar efforts that are shaping a positive future for the region.

Working Together

Cross-jurisdictional or public/private partnerships focused on solutions or working together to tackle tough problems and advance VISION 2050. Examples include multijurisdictional work on housing affordability, environmental and climate initiatives, corridor transportation planning, or other similar efforts to face long-term regional challenges.

The region's vision for 2050

is to provide exceptional quality of life, opportunity for all, connected communities, a spectacular natural environment, and an innovative, thriving economy. More information about the goals and themes of VISION 2050 can be found at www.psrc.org

Eligibility

New this year: PSRC will only be accepting nominations directly from its [membership](#). Firms seeking to nominate projects can do so through the member jurisdiction in which the project is located.

Nominations must be for projects, programs, plans or partnerships within the four-county region of King, Kitsap, Pierce and Snohomish counties that help achieve VISION 2050. More information about the goals and themes of VISION 2050 can be found at psrc.org/vision.

All nominated projects must be completed and open, plans must be adopted by their jurisdictions, programs must be in operation and partnerships must be formally working together.

Submit a Nomination!

Nominations must be submitted online through the [VISION 2050 Awards Nomination Form](#)

Learn more at: www.psrc.org

Scan the code for
the nomination form



Schedule

- April 1, 2024 – Nominations due
- April-May 2024 – Awards Selection Committee composed of PSRC board members will select the award winners
- Summer/Fall 2024 – Awards presented on location around the region





SAVE THE DATE

Puget Sound Regional Council

2024 ANNUAL GENERAL ASSEMBLY

May 30, 2024 | 9:30 AM – 1:00 PM
Location TBD

PSRC's General Assembly will meet on **May 30, 2024**, to vote on major decisions, establish the budget, and elect new officers. Please save the date!

All mayors, county executives, commissioners, and councilmembers of PSRC member jurisdictions and tribes have votes at the Assembly and are encouraged to participate.

Registration will open in **early April**.

For questions, please contact **Sheila Rogers** at (206) 354-6560 or email srogers@psrc.org.



Puget Sound Regional Council



February 26, 2024

ATTN: Mayor, Executive,
Jurisdictional Clerk and Comprehensive Planning Staff

Dear Madam or Sir:

The South Sound Military & Communities Partnership (SSMCP) is a partnership of more than 50 members that include Pierce and Thurston Counties, the Nisqually Indian Tribe, cities, nonprofits, corporations, organizations, and Joint Base Lewis-McChord (JBLM.) We are one of the few organizations that span Pierce and Thurston Counties, and we seek to bridge military and civilian communities through innovative and flexible partnerships and performing mutually beneficial work in the South Sound. We aim to foster communication and mutual benefit by coordinating amongst our partners on complex issues affecting the military and civilian communities. You can find more information regarding our organization at www.ssmcp.org.

Per the Growth Management Act (GMA), each county and city in King, Kitsap, Mason, Pierce and Thurston Counties are required to conduct a periodic update of its respective Comprehensive Plan and development regulations by either December 2024 or December 2025. This letter is to:

- provide information related to local military presence and compatibility to you for consideration during the periodic update; and
- to request that as planning policies and regulations are updated for your jurisdiction, that your jurisdiction incorporate this information into your new Comprehensive Plan and regulations.

Military Presence and Impact in Washington State

Although not always top of mind in land use planning and general awareness, Washington State has the 6th highest regional concentration of military presence in the US. Installations include:

- Joint Base Lewis-McChord
- Naval Base Kitsap
- Naval Station Everett
- Naval Air Station Whidbey Island
- Naval Magazine Indian Island
- Fairchild Air Force Base
- Yakima Training Center, and
- Camp Murray.

Figure 13: Military Bases in Washington State



Source: [WA Department of Commerce, Washington State Guidebook on Military and Community Compatibility, 2019](#)

In federal fiscal year 2021, Washington State saw the 9th highest amount of defense spending (\$19.1 Billion) and the 7th highest personnel spending (\$7.4 Billion) in the country; King County saw the 10th highest defense contract spending (the private- and public-sector vendors that were among the ten biggest recipients of DoD spending in a state) in the country (\$8.5 Billion.)

Table 1: Top 10 States by Total Defense Spending

RANK	STATE	DEFENSE SPENDING (billions)
1	Virginia	\$62.7
2	California	\$57.4
3	Texas	\$47.3
4	New York ²	\$30.9
5	Florida	\$30.1
6	Maryland	\$26.3
7	Massachusetts	\$21.3
8	Connecticut	\$19.3
9	Washington	\$19.1
10	Pennsylvania	\$16.5
Total for Top Ten States		\$330.9
Total for 50 States and District of Columbia		\$559.0

Top 10 States by Personnel Spending

	(billions)
Virginia	\$20.1
California	\$17.2
Texas	\$12.2
Florida	\$8.4
Maryland	\$8.3
North Carolina	\$7.6
Washington	\$7.4
Georgia	\$7.3
Hawaii	\$5.3
Colorado	\$4.0

Source: [OLDCC: Defense Spending by State for 2021](#)

The [2023 JBLM Regional Economic Impact Analysis \(REIA\)](#) (conducted by SSMCP & University of Washington-Tacoma Center for Business Analytics) highlights the importance of JBLM as a vital economic driver in Pierce and Thurston Counties. As the largest employer in South Sound and the third-largest employer in Washington State, the total economic impact attributable to the existence of JBLM includes:

- over 85,000 total jobs;
- over \$5 Billion in new and sustained labor income; and
- \$5.6 Billion in total output.

These economic impacts generated an additional \$1.4 Billion in total tax revenue, including over \$400 Million in state and local taxes.

Military-Civilian Compatibility

The Growth Management Act requires that:

- a comprehensive plan, amendment to a plan, a development regulation or amendment to a development regulation, should not allow development in the vicinity of a military installation that is incompatible with the installation's ability to carry out its mission requirements." (RCW 36.70.530(3)); and
- each county and city planning under RCW 36.70A.040 that has a federal military installation, other than a reserve center, that employs one hundred or more personnel and is operated by the United States department of defense within or adjacent to its border, shall notify the commander of the military installation of the county's or city's intent to amend its comprehensive plan or development regulations to address lands adjacent to military installations to ensure those lands are protected from incompatible development. (RCW 36.70.530(4)).

Housing for Military Service members, Families and Contractors

It is a general rule of thumb that ~70% of service members and their families actually live off-base when stationed in Washington State. It is also critical for local governments and planners to be aware that people move often while in service; every year, roughly 18,000 service members either arrive at or leave JBLM:



Source: <https://wstc.wa.gov/wp-content/uploads/2021/04/2021-0420-BP8-JBLM.pdf>

This amount of regular disruption in the local housing market is significant. It affects civilian residents, local government and district services, housing unit rental and purchase costs, and more. At the same time, service members stationed at JBLM continue to struggle to find housing affordable to them in Pierce and Thurston Counties as well as the larger Puget Sound region.

When new service members arrive at JBLM, they are provided the following information by the Military Location Center regarding living off-base:

If you wish to locate within 15-25 minutes of JBLM:

JBLM straddles Pierce County and Thurston County.

North

- Lakewood
- Steilacoom
- University Place
- Tacoma
- Fife
- Milton

Federal Way is approximately 35 minutes north and between JBLM and Seattle.

East

- Puyallup
- Spanaway
- Roy - Yelm
- Graham

South

- Dupont
- Northwest Landing
- Lacey
- Olympia
- Tumwater

<https://home.army.mil/lewis-mcchord/index.php/about/selecting-your-home>

As part of its ongoing work, the SSMCP conducted a 2022 Growth Coordination Plan exploring, among other issues, where JBLM servicemembers live. The following map provides that data for King, Kitsap, Mason, Pierce, and Thurston Counties.

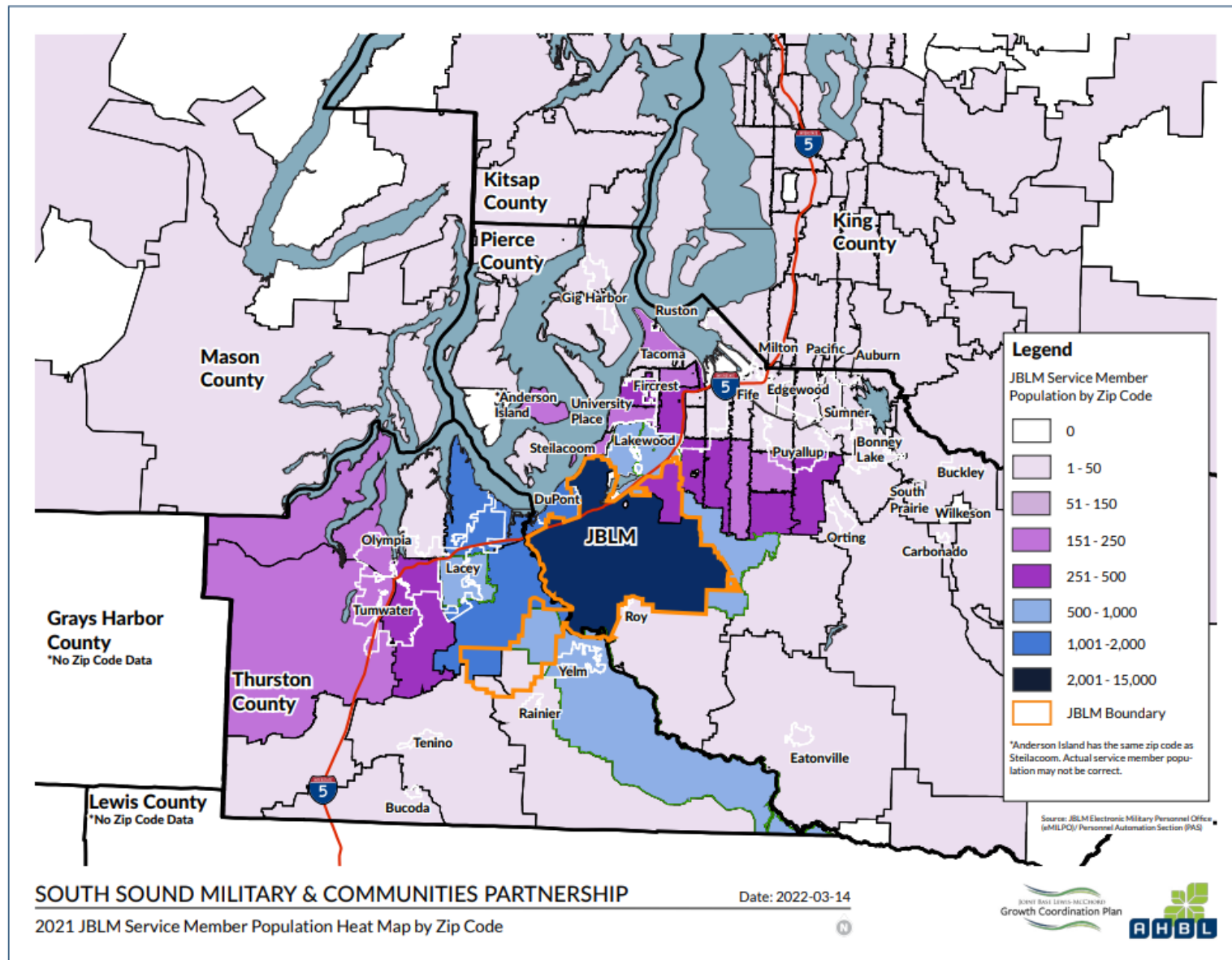


Figure 2.2: 2021 JBLM Service Member Population Heat Map by Zip Code

⁴ Source: "QuickFacts- Pierce County, Washington" (Web). United States Census Bureau. Retrieved December 26, 2021.

⁵ Source: "State & County QuickFacts". United States Census Bureau. Archived from the original on June 7, 2011. Retrieved January 7, 2014.

⁶ Source: "QuickFacts- Thurston County, Washington" (Web). United States Census Bureau. Retrieved December 26, 2021.

Additional detail regarding the number of military-connected populations (current service members and others) in these counties and their respective cities is attached hereto based on the 2022 Defense Enrollment Eligibility Reporting System (DEERS').

Requested and Recommended Actions by Local Governments

In addition to compliance with RCW 36.70A.530 related to military-civilian compatibility in land use planning, the SSMCP requests that local governments acknowledge and reflect the housing realities for military service members and their families in their 2024 and 2025 Comprehensive Plan periodic updates. [E2SHB 1220](#), [E2SHB 1110](#), and [EHB 1337](#) are all requiring significant review and update to county and city planning for housing at all economic segments, with an equity lens, and with a specific focus on increasing housing types and density per lot in order to provide affordable housing for all.

SSMCP recommends reviewing the [2015 Joint Base Lewis-McChord \(JBLM\) Joint Land Use Study \(JLUS\)](#) (released as multiple documents.) Most current land uses around JBLM do not have negative impacts on military capabilities; however, some ongoing and potential new or future areas of concern were identified through the JLUS process, including:

- Urban Growth
- Aircraft Safety
- Noise
- Endangered and Threatened Species and Habitat
- Transportation
- Trespass and Unauthorized Access to JBLM Range and Training Lands
- Communication and Coordination

The JLUS includes a [compatibility analysis](#) of local jurisdictions - the maps on the following page includes excerpts from the 2015 JLUS related to compatibility. SSMCP thanks those jurisdictions that have already taken actions to implement recommendations from the 2015 JLUS.

¹ The [DEERS database](#) contains information for each uniformed service member (active duty, retired, or a member of a reserve component), U.S.-sponsored foreign military, DOD and uniformed services civilians, other personnel as directed by the DOD (including the patient population serviced through the Military Health Services System), and their eligible family members.

Land Use Compatibility

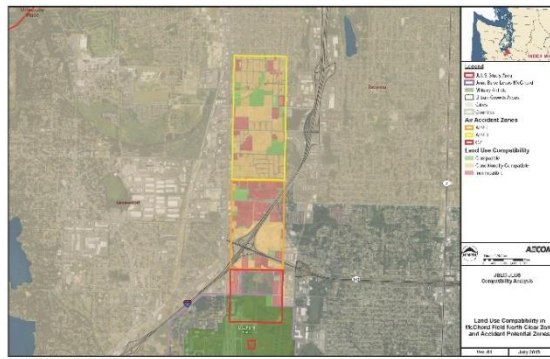
Most current land uses around JBLM do not have negative impacts on military capabilities; however, some ongoing and potential new or future areas of concern were identified through the current JLUS process:

- Urban Growth
- Aircraft Safety
- Noise
- Endangered and Threatened Species and Habitat
- Transportation
- Trespass and Unauthorized Access to JBLM Range and Training Lands
- Communication and Coordination

The maps below and to the right are used to identify where potential incompatibilities may exist and where compatibility strategies are needed.

Aircraft Safety

The map to the right shows aircraft safety zones related to McCord Field. The three zones are based on the statistical chance of aircraft accidents. Land uses that concentrate people, such as schools or hospitals, higher density commercial, or residential uses other than very low density residential are at higher risk within these zones. Red, yellow, and green correspond to the level of compatibility of current land uses.



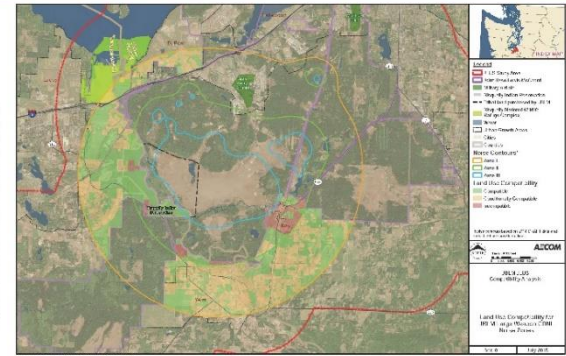
Aircraft Noise

The map to the right shows noise generated from aircraft. Generally, residential uses and public uses like schools are more sensitive to noise than commercial or industrial uses. Red, yellow, and green correspond to the level of compatibility of current land uses.



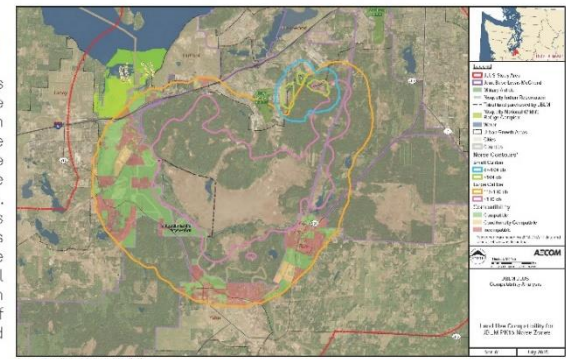
Large Weapons Noise: Day/Night Average

The map to the right shows noise generated from the firing of large weapons on JBLM training lands, with noise levels averaged over a 24-hour period. Generally, residential uses and public uses like schools are more sensitive to noise than commercial or industrial uses. Red, yellow, and green correspond to the level of compatibility of current land uses.



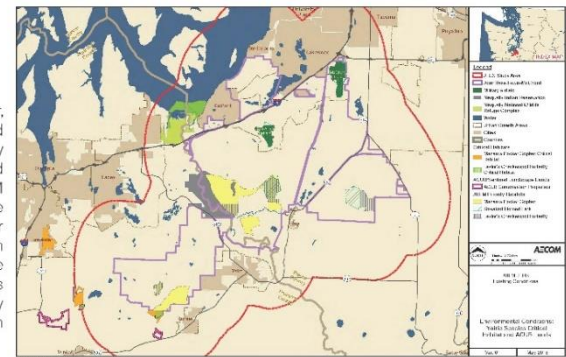
Large Weapons Noise: Peak Levels

The map to the right shows noise generated from the firing of large weapons on JBLM training lands. The mapped noise levels relate to single firing events (noise caused by a single boom). Generally, residential uses and public uses like schools are more sensitive to noise than commercial or industrial uses. Red, yellow, and green correspond to the level of compatibility of current land uses.



Threatened and Endangered Species Habitat

The Mazama Pocket Gopher, Streaked Horned Lark, and Taylor's Checkerspot Butterfly are threatened or endangered species with habitat on JBLM and in surrounding areas. The Army Compatible Use Buffer (ACUB) program has been used to conserve and restore these habitats with the goals of promoting species recovery and to lessen restrictions on JBLM training.



LAND USE COMPATIBILITY

We also recommend review of the SSMCP/JBLM [2022 Growth Coordination Plan](#) as starting points for your jurisdiction when incorporating military compatibility in your 2024 and 2025 periodic updates. Both SSMCP documents include jurisdiction-specific information, template language for Comprehensive Plan policies and development regulations, and more.

In addition, SSMCP encourages local governments to review the Department of Commerce's [Military and Community Compatibility Guidebook, 2019](#). It too is a great resource for policy and regulation drafting and adoption.

SSMCPs staff and working group members stand ready to assist with incorporating information regarding military compatibility and service member housing issues into your Comprehensive Plan policies.

Thank you for your work as you update your planning documents to recognize everyone in your community, including those with connections to the military, through 2044 and beyond.

Sincerely,

A handwritten signature in cursive script, reading "John F. Caulfield".

John Caulfield, Chair, SSMCP Executive Leadership Team
Lakewood City Manager

References

DEERS Database: https://milconnect.dmdc.osd.mil/milconnect/public/faq/DEERS-Updating_and_Correcting_DEERS_Data

RCW 36.70A.530 Land use development incompatible with military installation not allowed - Revision of comprehensive plans and development regulations.

(1) Military installations are of particular importance to the economic health of the state of Washington and it is a priority of the state to protect the land surrounding our military installations from incompatible development.

(2) Comprehensive plans, amendments to comprehensive plans, development regulations, or amendments to development regulations adopted under this section shall be adopted or amended concurrent with the scheduled update provided in RCW 36.70A.130, except that counties and cities identified in RCW 36.70A.130(4) shall comply with this section on or before December 1, 2005, and shall thereafter comply with this section on a schedule consistent with RCW 36.70A.130(4).

(3) A comprehensive plan, amendment to a plan, a development regulation or amendment to a development regulation, should not allow development in the vicinity of a military installation that is incompatible with the installation's ability to carry out its mission requirements. A city or county may find that an existing comprehensive plan or development regulations are compatible with the installation's ability to carry out its mission requirements.

(4) As part of the requirements of RCW 36.70A.070(1) each county and city planning under RCW 36.70A.040 that has a federal military installation, other than a reserve center, that employs one hundred or more personnel and is operated by the United States department of defense within or adjacent to its border, shall notify the commander of the military installation of the county's or city's intent to amend its comprehensive plan or development regulations to address lands adjacent to military installations to ensure those lands are protected from incompatible development.

(5)(a) The notice provided under subsection (4) of this section shall request from the commander of the military installation a written recommendation and supporting facts relating to the use of land being considered in the adoption of a comprehensive plan or an amendment to a plan. The notice shall provide sixty days for a response from the commander. If the commander does not submit a response to such request within sixty days, the local government may presume that implementation of the proposed plan or amendment will not have any adverse effect on the operation of the installation.

(b) When a county or city intends to amend its development regulations to be consistent with the comprehensive plan elements addressed in (a) of this subsection, notice shall be provided to the commander of the military installation consistent with subsection (4) of this section. The notice shall request from the

commander of the military installation a written recommendation and supporting facts relating to the use of land being considered in the amendment to the development regulations. The notice shall provide sixty days for a response from the commander to the requesting government. If the commander does not submit a response to such request within sixty days, the local government may presume that implementation of the proposed development regulation or amendment will not have any adverse effect on the operation of the installation.

2022 Joint Base Lewis McChord Growth Coordination Plan is available at:
https://www.ssmcp.org/wp-content/uploads/2022/10/20220404_Growth-Coordination-Plan-FINAL.pdf

12.1 Continue Pursuing Land Use Compatibility Measures: SSMCP advocate for the inclusion of military-related land use compatibility policies in the Thurston County countywide policies.

12.2 Continue Pursuing Land Use Compatibility Measures: Support local communities as they update their comprehensive plans.

Department of Defense Spending by State: Fiscal Year 2021 from the US Department of Defense Office of Local Defense Community Cooperation (OLDCC) is available at: https://oldcc.gov/sites/default/files/defense-spending-rpts/OLDCC_DSBS_FY2021_FINAL_WEB_Revised.pdf.

2023 JBLM Regional Economic Impact Analysis is available at:
<https://www.ssmcp.org/wp-content/uploads/2023/10/REIA-2023-Pierce-Thurston-as-of-09272023.pdf>

2019 WA Department of Commerce Military Compatibility Guidebook is available at:
<https://www.commerce.wa.gov/serving-communities/growth-management/growth-management-topics/military-base-land-use/>

2015 Joint Base Lewis-McChord (JBLM) Joint Land Use Study (JLUS) is available at:
<https://www.ssmcp.org/joint-land-use-study/>