

# Regionalism in The Puget Sound



Puget Sound Regional Council

# Central Puget Sound Region

- 4.4 million people
- 2.4 million jobs
- 4 counties: King, Pierce, Snohomish, and Kitsap
- 82 cities and towns
- Urban and rural
- 6,300 square miles
- 1,000 square miles in urban growth areas







King County



Kitsap County

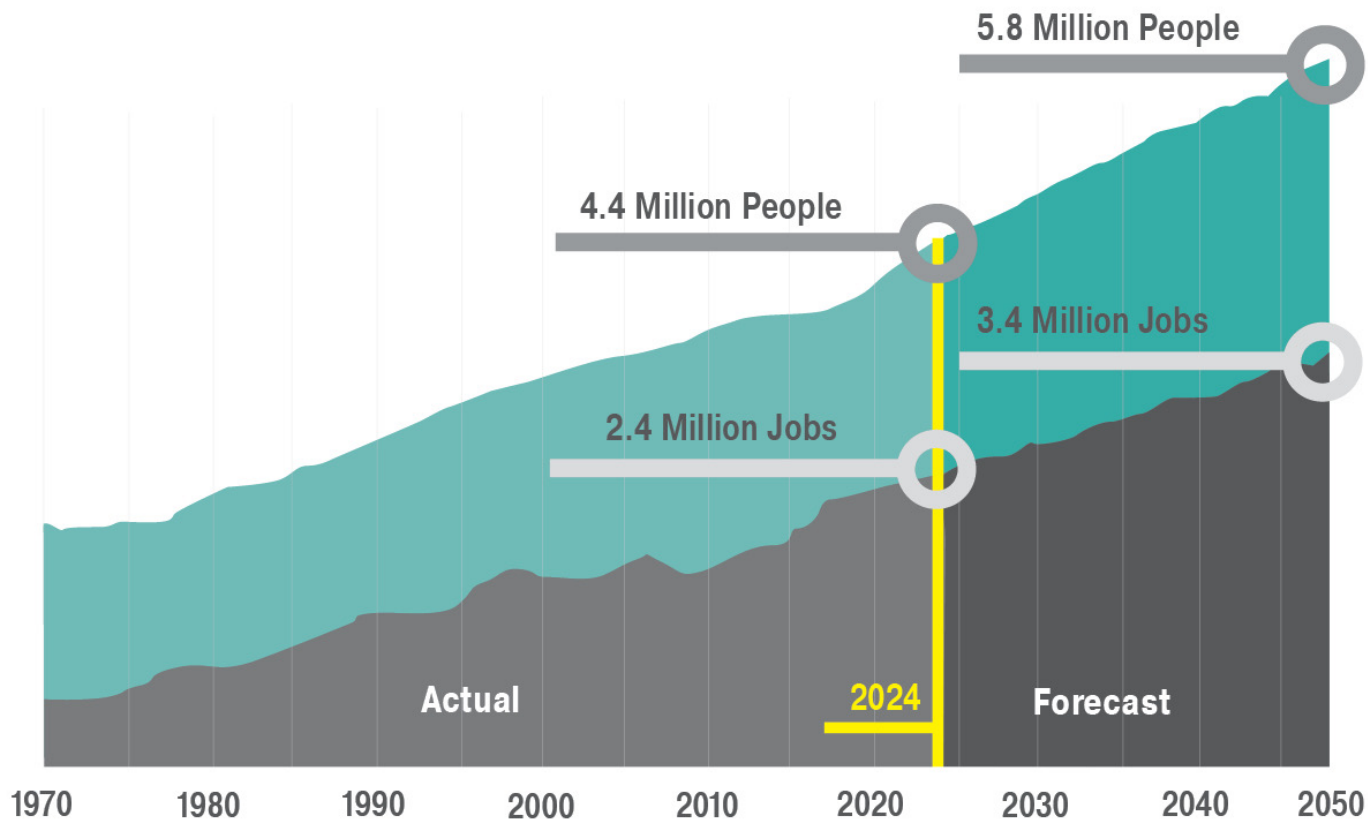


Pierce County



Snohomish County

# Puget Sound Regional Growth Forecast





# Regionalism





# Seattle 1960

Seattle population: **557, 087**

Region population: **1,512,979**

WA: **2.866 million** | Iowa: **2.76 million**





# Space Needle Doodle



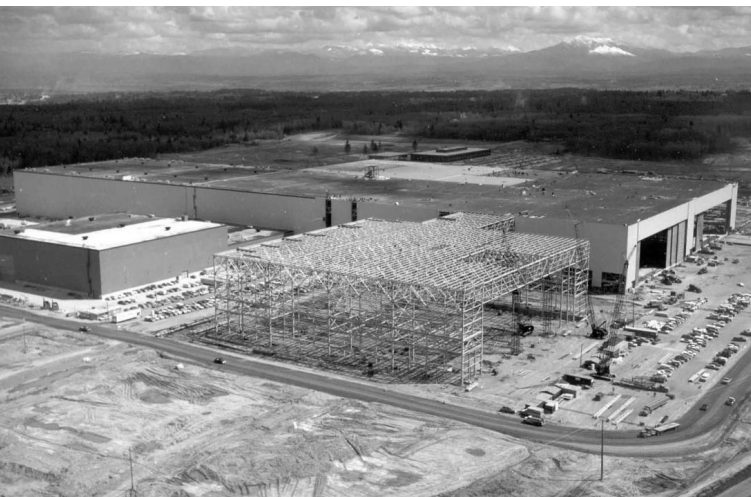


# Seattle 1962





# Boeing Boom





# Forward Thrust

**DON'T GO BUST**  
with FORWARD THRUST



Take one moment and think about the sort of place we'll be handing to our children and their children.

We'll ride on fast, safe electric trains throughout Metropolitan Seattle.

We'll enjoy more than two hundred new parks and recreational centers.

We'll have new swimming pools, new tennis courts, new boat ramps, new golf courses.

We'll drive on safer, well-lighted arterials.

We'll go to dances and meetings in conveniently located community centers, complete with classrooms, theatres, and gymnasiums.

We'll attend football games and circuses and political rallies in a large all-weather stadium.

We'll have better fire protection, pollution-free lake and Sound beaches, less chance of flood or storm damage.

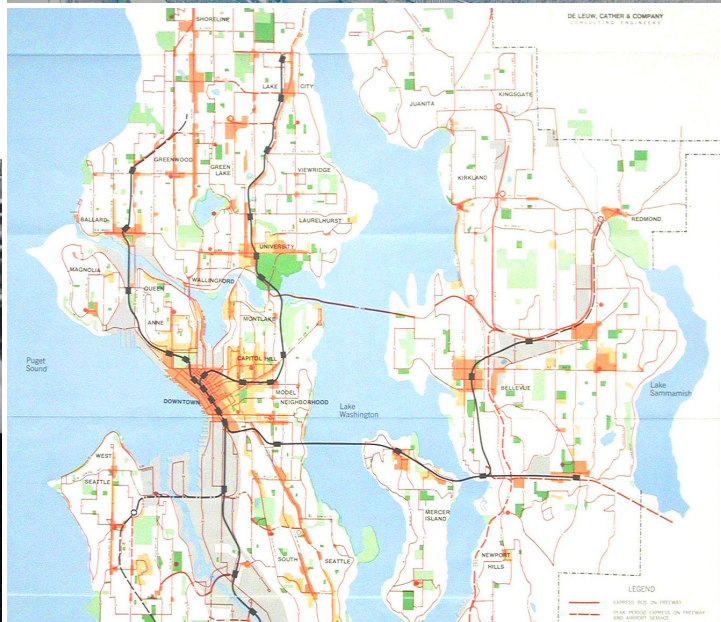
All this happened because we took the time and had the good sense to vote Yes on Tuesday, February 13, 1968.

This Voter Information Supplement paid for by voluntary contributions and distributed by Decision Committee for Forward Thrust, Inc., Thomas E. Baliga, Chairman, 2001 White-Harry-Stuart Building, Seattle, Washington 98101; Main 4-6342



**750,000 more people are coming to King County!**

**Will we just move over?  
Or will we move ahead?...**





# Boeing Bust



# Seattle Rail Plan





# Paul Allen and Bill Gates At Lakeside School



# Popular Growth

## Seattle

1960 557,087

1990 516,259

## Region

1960 1,512,979

1990 2,748,895



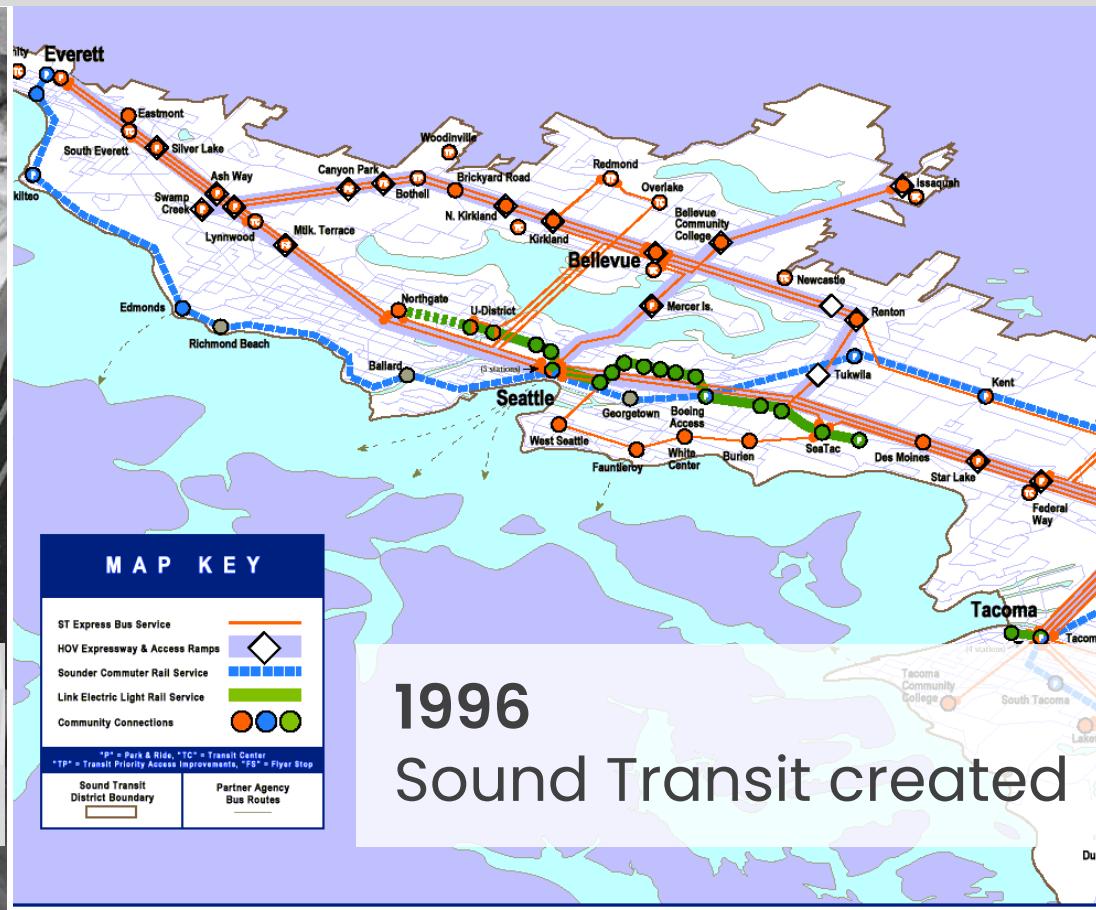


# Regional Sprawl





# Response From State of Washington



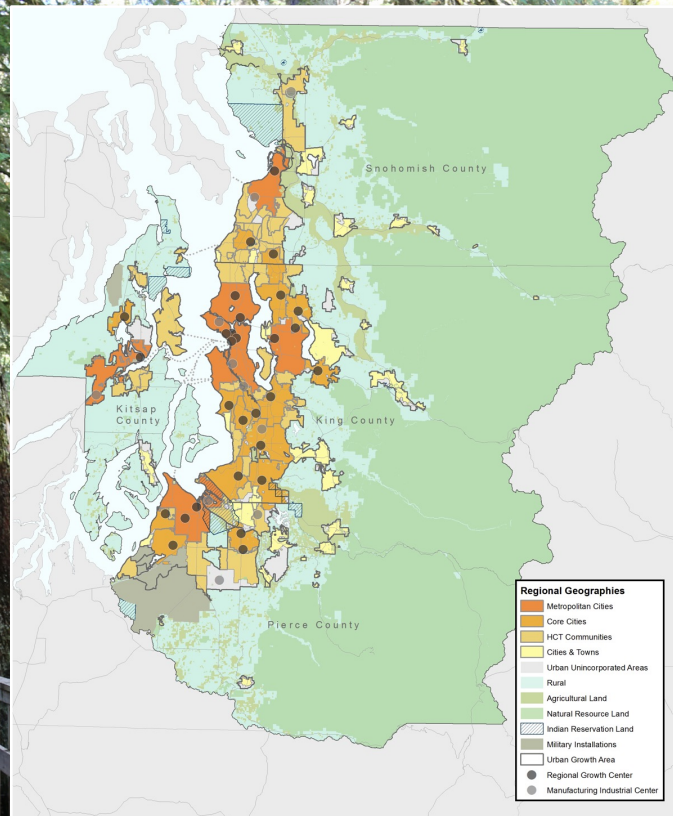
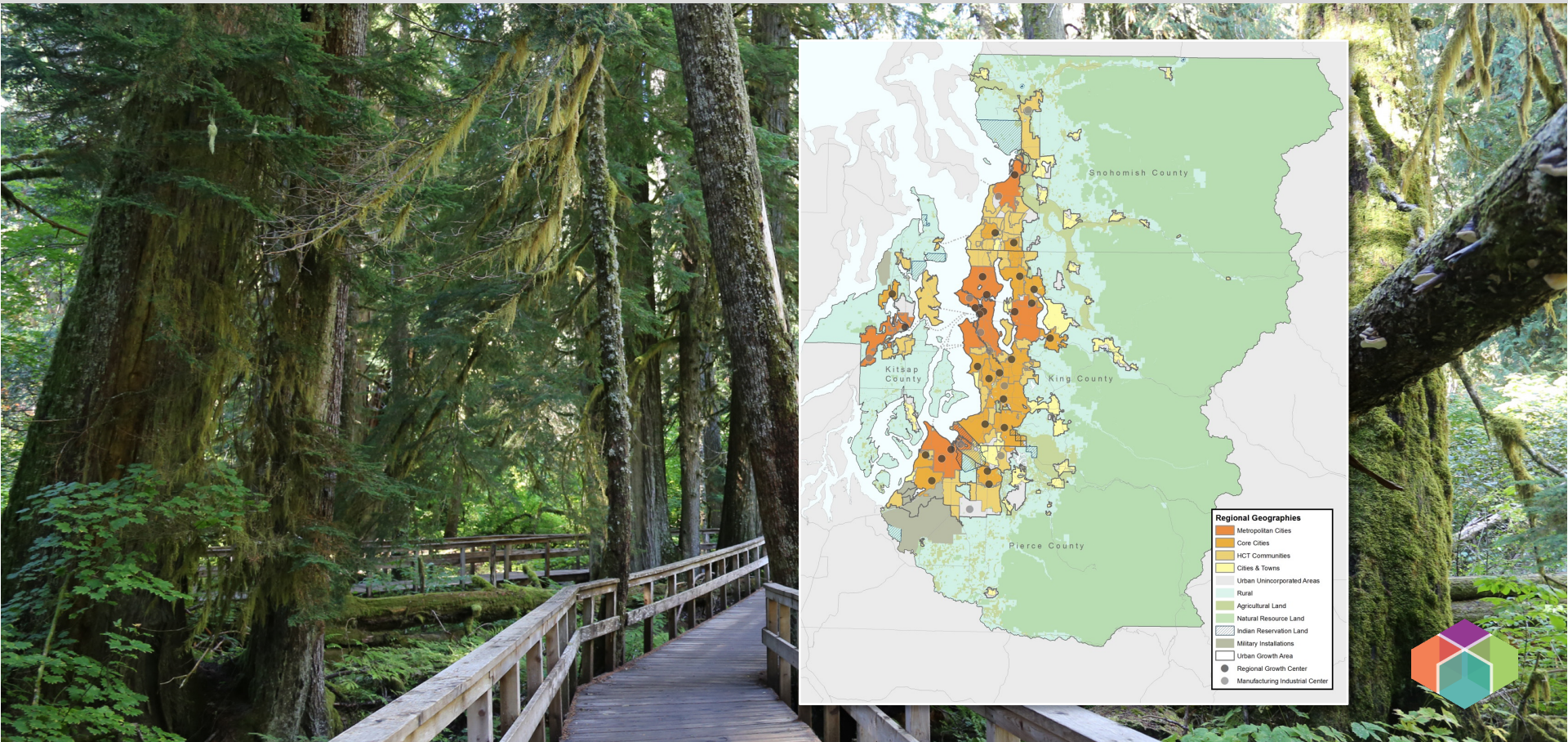


# PSRC Formed in 1991





# VISION 2050





# Limiting Sprawl

Regionally, **96%** of permitted housing units are in cities and urban areas  
Compared to **72%** in 1991







Bellevue Spring District



Tacoma/Ruston



Amazon South Lake Union







Community Transit Swift BRT



Sound Transit Sounder



Kitsap Transit Fast Ferry



South Transit Link





# Population Growth

## Seattle

1960 557,087

1990 516,259

2023 779,200

## Region

1960 1,512,979

1990 2,748,895

2023 4,437,100



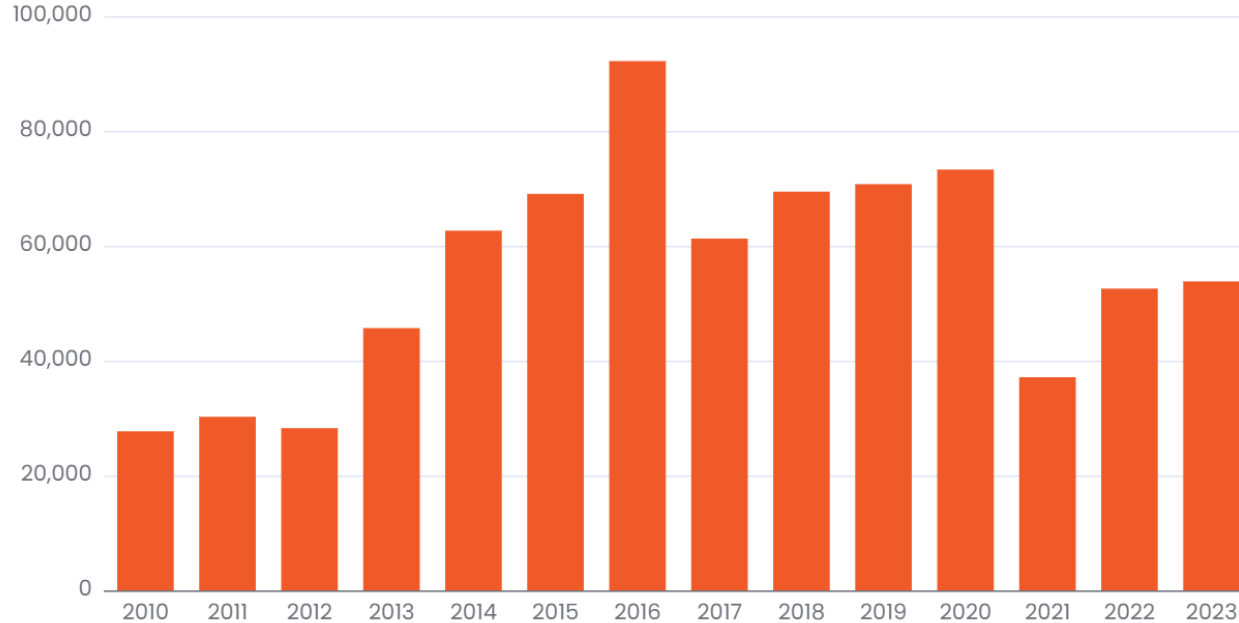


# Regional Data Trends



# Population Growth is Increasing

## Annual Population Change



The region grew by almost **54,000** people between 2022 and 2023.

Source: Washington State Office of Financial Management April 1<sup>st</sup> Population Estimates



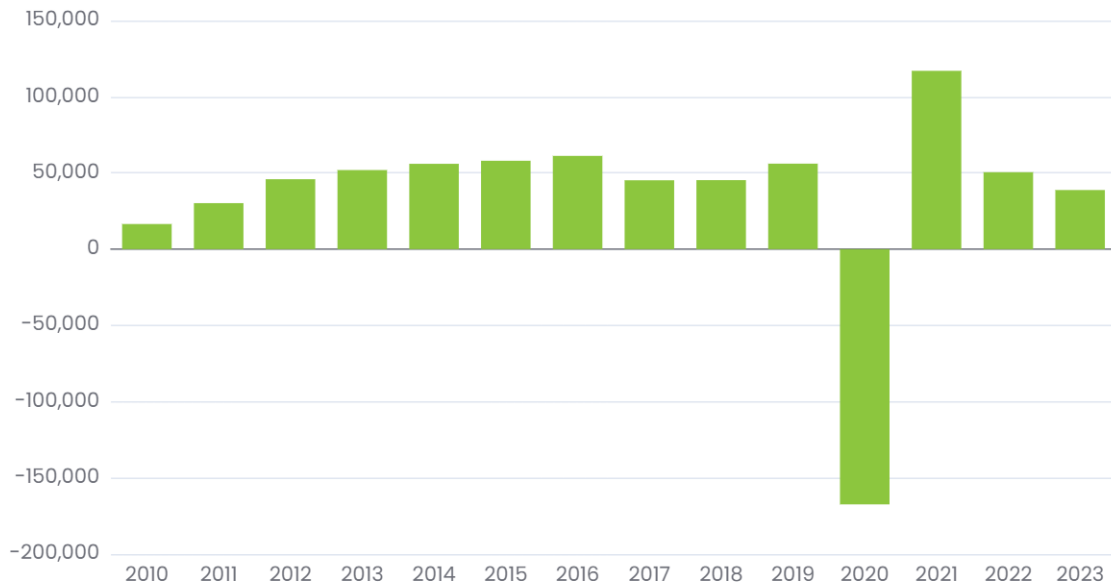


# Economic Trends



# Job Growth Has Returned

## Annual Employment Change



The region added **39,000** jobs between 2022 and 2023.

The region fully reclaimed all the jobs lost during the pandemic in 2022 and employment was above 2019 levels in 2023

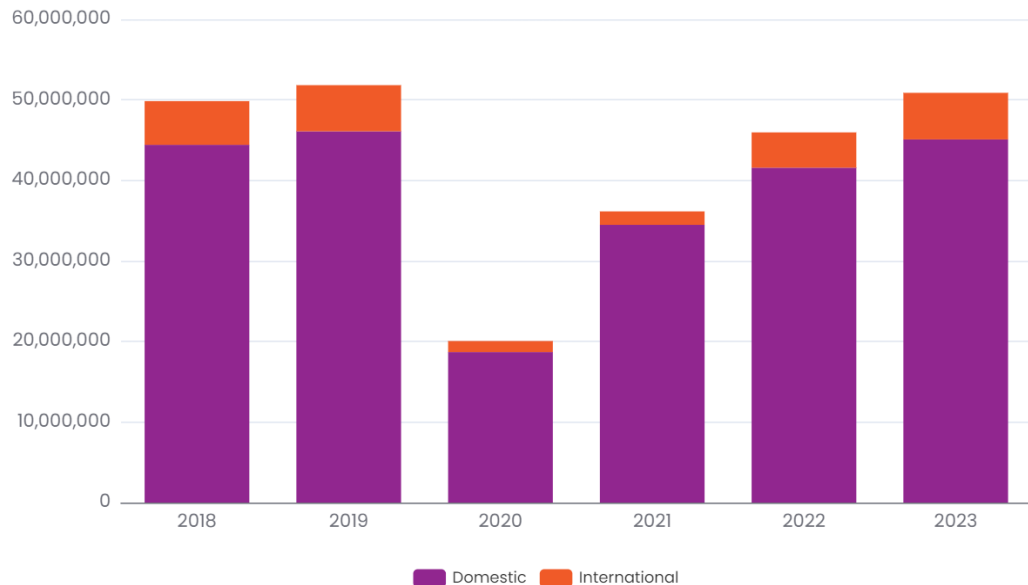
Source: Washington State Employment Securities Department






# International Travelers Have Returned

## Passenger Enplanements by Type



Source: [SEA Airport Statistics / Port of Seattle \(portseattle.org\)](https://portseattle.org/sea-airport-statistics)



International  
Passengers accounted  
for approximately **11%**  
of all passenger  
enplanements in 2023.



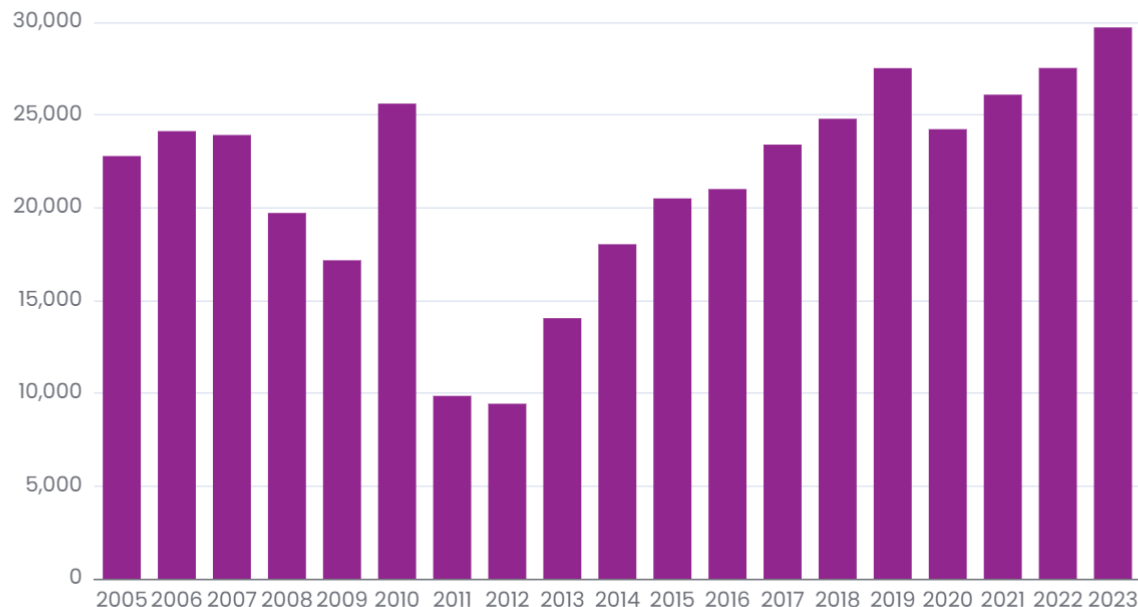
# Housing Trends





# Housing Unit Growth is Increasing

## Annual Housing Unit Change



The region added **29,700** housing units between 2022 and 2023.

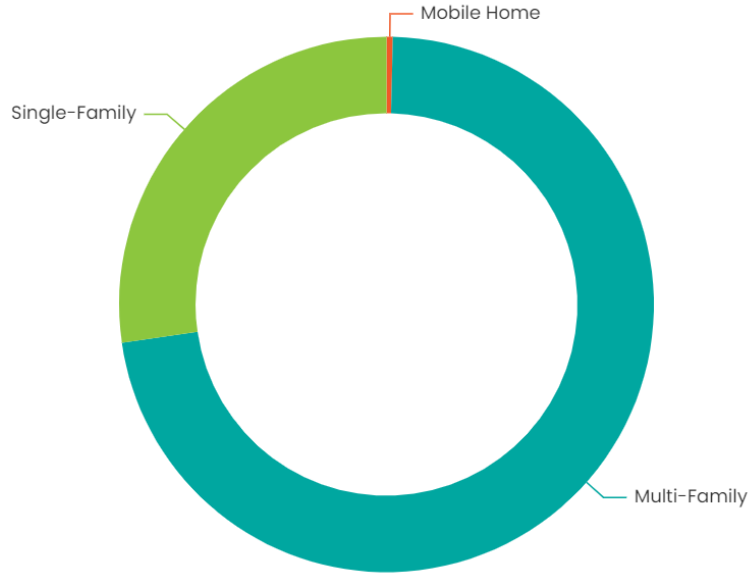
Source: Washington State Office of Financial Management April 1<sup>st</sup> Population Estimates





# Most New Housing Has Been Multi-Family

## Growth by Type: 2018 to 2023



Source: Washington State Office of Financial Management April 1<sup>st</sup> Population Estimates

**72%** of housing unit growth since 2018 has been multi-family housing





# Transportation on Safety Trends



# Annual Traffic Related Deaths



In FY2022, PSRC collaborated with **six** member governments to obtain a **\$4.9M** Safe Streets for All (**SS4A**) grant to develop Safety Action Plans to help reverse this troubling trend.

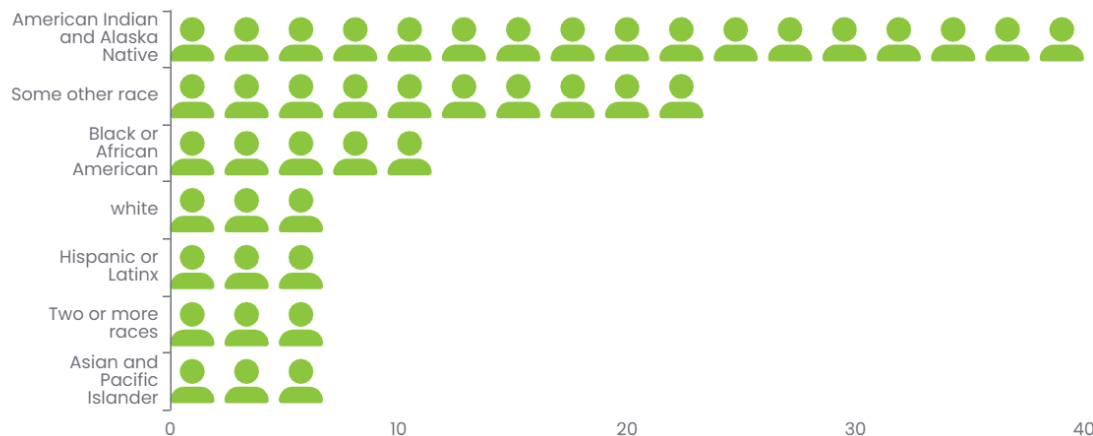
Source: Washington Traffic Safety Commission Coded Fatality Files





# Traffic Related Deaths by Race

## Traffic Related Deaths per 100,000 people: 2022



Source: Washington Traffic Safety Commission Coded Fatality Files

An American Indian or Alaska Native member of our community was **7 times** more likely to **die** in a traffic collision than a white resident in 2022.



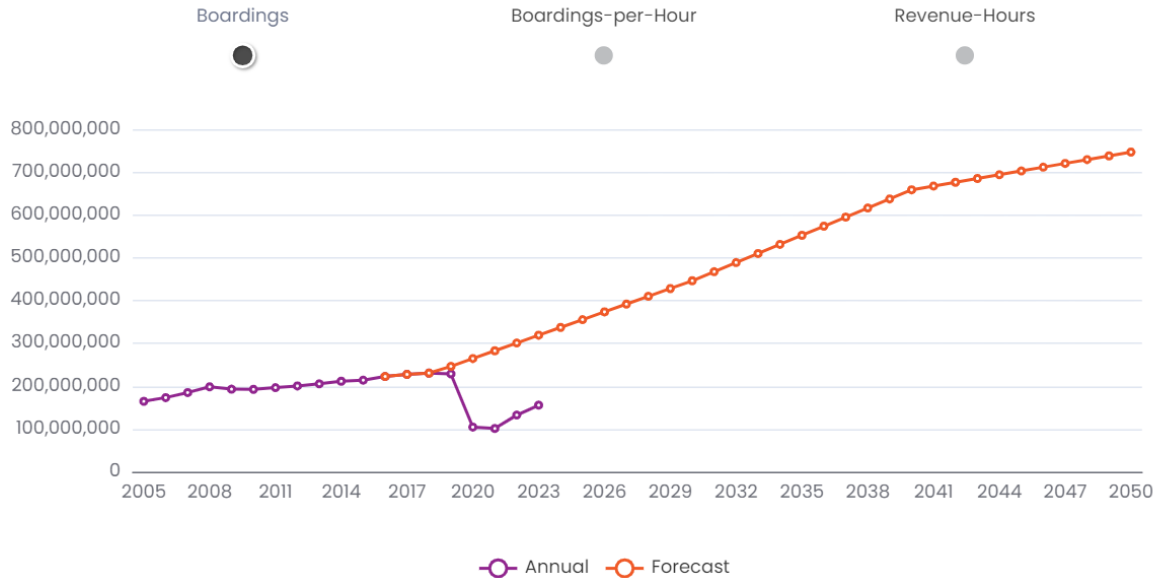
# Transit Trends





# Transit Ridership is Still Recovering

## Annual Transit Boardings



Recovery has varied by mode. **Light Rail** and **Ferry** modes are closest to pre-pandemic levels.

**Commuter Rail** and **Vanpools**, which are highly dependent on workers in major employment centers, continue to recover at slower rates.

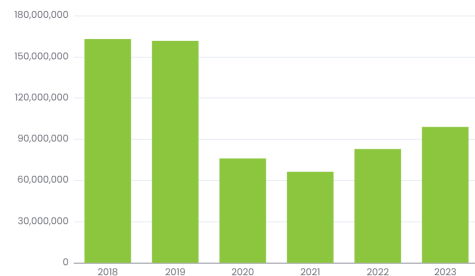
Source: USDOT Federal Transit Administration National Transit Database



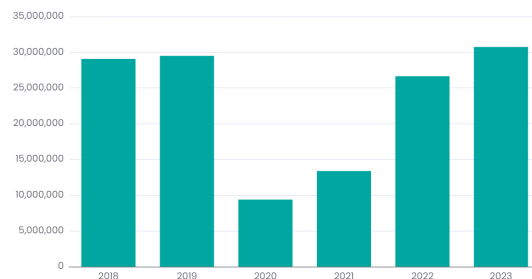


# Recovery differs by Mode

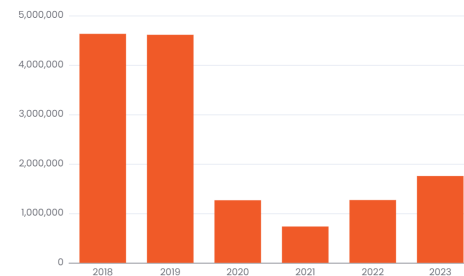
## Bus Boardings



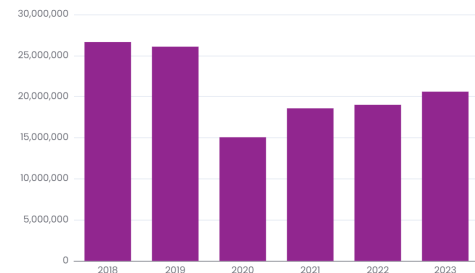
## Light Rail Boardings



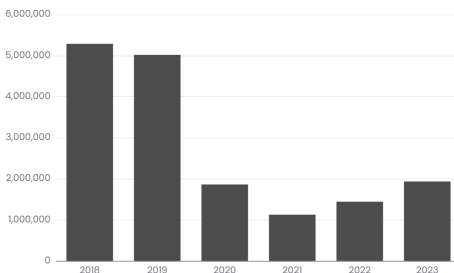
## Commuter Rail Boardings



## Ferry Boardings



## Vanpool Boardings



Source: USDOT Federal Transit Administration National Transit Database





# Thank You.



Puget Sound Regional Council

**Josh Brown**, Executive Director, [jbrown@psrc.org](mailto:jbrown@psrc.org), 206-464-7515

**Nancy Buonanno Grennan**, Deputy Executive Director, [nbgrennan@psrc.org](mailto:nbgrennan@psrc.org), 206-464-7527

**Robin Koskey**, Director of Government Relations and Communications, [rkoskey@psrc.org](mailto:rkoskey@psrc.org), 206-971-3602

**Craig Helmann**, Director of Data, [chelmann@psrc.org](mailto:chelmann@psrc.org), 206-389-2889

**Paul Inghram**, Director of Growth Management, [pinghram@psrc.org](mailto:pinghram@psrc.org), 206-464-7549

**Ben Bakkenta**, Director of Regional Planning, [bbakkenta@psrc.org](mailto:bbakkenta@psrc.org), 206-971-3286

**Charles Patton**, Program Manager – Equity Policy and Initiatives, [cpatton@psrc.org](mailto:cpatton@psrc.org), 206-971-3285

**Jason Thibedeau**, Program Manager – Economic Development, [jthibedeau@psrc.org](mailto:jthibedeau@psrc.org), 206-389-2879

**Kelly McGourty**, Director of Transportation Planning, [kmcgourty@psrc.org](mailto:kmcgourty@psrc.org), 206-971-3601