

Title VI Demographic Profile

Equity Advisory Committee

March 7, 2024



Puget Sound Regional Council



We are leaders in the region to realize equity for all. Diversity, racial equity and inclusion are integrated into how we carry out all our work.

psrc.org/equity

Overview

What is the Title VI Demographic Profile?

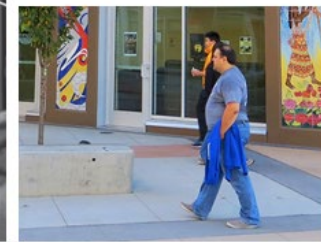
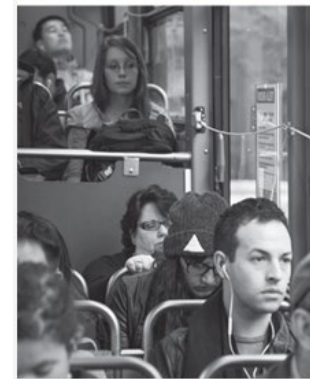
- Title VI and environmental justice framework
- Purpose of demographic profile
- Relationship with equity focus areas (EFAs)

2021 Demographic Profile – Content

2024 Demographic Profile – Scope of Work

Next Steps

EAC Feedback



EAC Feedback

Questions for Equity Advisory Committee:

1. Questions about **Title VI demographic profile and its purpose?**
2. Feedback on **scope of work** for 2024 update to demographic profile?

Title VI of the Civil Rights Act of 1964



Title VI of the Civil Rights Act of 1964 states that “No person in the United States shall, on the ground of race, color, or national origin, be excluded from participation in, be denied the benefits of, or be subjected to discrimination **under any program or activity receiving Federal financial assistance.**”



Title VI and Environmental Justice

Executive Order 12898 (Clinton, 1994)

- Directs federal agencies to **identify and address “disproportionately high and adverse human health and environmental effects of its programs, policies, and activities on minority populations and low-income populations”**

Executive Order 13166 (Clinton, 2000)

- Directs federal agencies to **improve access to services for persons with limited English proficiency**

Related Civil Rights Statutes

Additional protected classes:

- **Age** (Title 42 U.S. Code §6102)
- **Sex** (Title 23 U.S. Code §324)
- **Disability** (Americans with Disabilities Act of 1990, Title 42 U.S. Code §§12101-12213)



Purpose of Demographic Profile

Compile demographic information for region

- Environmental justice populations (people of color, low-income)
- Language and LEP
- Additional equity populations
- Summary statistics and geographic distributions and patterns

For purpose of:

- Informing environmental justice and equity **analyses of disproportionate impacts**
- Supporting **effective public outreach and engagement** of environmental justice and other equity populations

Equity Focus Areas (EFAs)

Based on foundational work in

VISION 2050 & the Regional Transportation Plan (RTP)

Six demographics used to measure and track disparities

People of
Color

People with
Low Incomes

People with
Disabilities

Youth
(Ages 5–17)

Older Adults
(Age 65+)

People with
limited English
proficiency
(LEP)

Equity Focus Areas (EFAs)

have higher proportions of members of these groups



FHWA Regional Project Evaluation Criteria

Highlights of Identification of Population Groups

- What Equity Focus Areas (EFAs) will the project serve:
 - People of Color
 - People with Low Incomes
 - People with Disabilities
 - Youth (Ages 5-17)
 - Older Adults (Age 65+)
 - People with LEP (Limited English Proficiency)

CRITERIA
Development of Centers
Mobility and Accessibility
Outreach and Displacement
Safety
Air Quality / Climate Change



2021 Profile - Populations and Characteristics

Dimensions	Equity Focus Areas	Additional Characteristics
Race & Ethnicity	-People of color	-Race and Hispanic/Latinx origin detail -Asian sub-population detail
Income	-People with low incomes <200% poverty	-Income <100% and <150% poverty -Median household income
Language	-People with limited English proficiency	-Common languages spoken
Age	-Youth (age <18) -Older adults (age 65+)	
Ability	-People with a disability	
Sex		-Women
Household Type		-Single parent households
Vehicle Ownership		-Zero-vehicle households



2021 Profile - Tables and Figures

List of Tables

Table 1. Population by Race and Hispanic/Latinx Origin: 2019	9
Table 2. Low-Income Populations: 2019.....	19
Table 3. Low Income Populations by Race and Hispanic/Latinx Origin: 2019	23
Table 4. Median Household Income by Race and Hispanic/Latinx Origin: 2019	24
Table 5. Income Characteristics of Asian Alone Populations: 2015-2019.....	27
Table 6. Low Income Populations by Race and Hispanic/Latinx Origin and Sex: 2019	31
Table 7. Income Characteristics of Households by Type: 2019	33
Table 8. Poverty Status for Population Age 65 and Over: 2019	36
Table 9. Poverty Status for Population Under Age 18: 2019.....	37
Table 10. Poverty Status for Persons with a Disability: 2019	39
Table 11. Zero-Vehicle Households: 2019	41
Table 12. Common Languages Other Than English Spoken in the Central Puget Sound: 2019	43
Table 13. Limited English Proficiency: 2019.....	46
Table 14. Ability to Speak English by Language Spoken at Home: 2019	47

2021 Central Puget Sound Demographic Profile:

<https://www.psrc.org/media/1822>

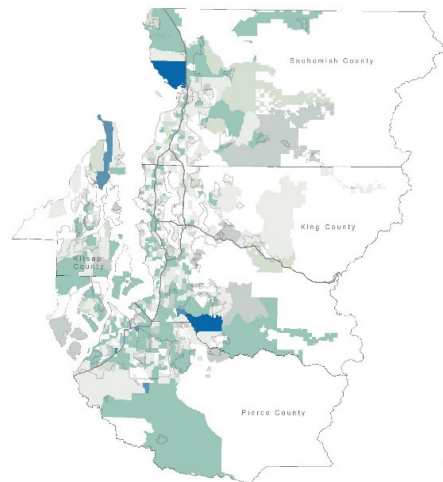
List of Figures

Figure 1. Population by Race and Hispanic/Latinx Origin: 2019	8
Figure 2. Population Change by Race and Hispanic/Latinx Origin: 2000-2019	11
Figure 3. People of Color	12
Figure 4. American Indian and Alaska Native Population	13
Figure 5. Asian Population	14
Figure 6. Black or African American Population	15
Figure 7. Native Hawaiian and Other Pacific Islander Population	16
Figure 8. Hispanic/Latinx Population.....	17
Figure 9. Low-Income Populations: 2019	18
Figure 10. Population Below 100% Poverty	20
Figure 11. Low-Income Population	21
Figure 12. Poverty Rates by Race and Hispanic/Latinx Origin: 2019.....	22
Figure 13. Median Household Income by Race and Hispanic/Latinx Origin: 2019.....	25
Figure 14. People of Color and Low-Income Populations	28
Figure 15. Median Household Income, Seattle-Tacoma-Bellevue MSA: 2019.....	30
Figure 16. Poverty Rate for Older Adult Population Age 65 and Over: 2019	34
Figure 17. Poverty Rate for Youth Population Age 5-17: 2019	35
Figure 18. Poverty Rate for Persons with a Disability: 2019	38
Figure 19. Zero-Vehicle Households by Householder: 2019	40
Figure 20. Common Languages Spoken Other Than English: 2019.....	42
Figure 21. Populations Speaking English Less Than “Very Well”: 2019	45

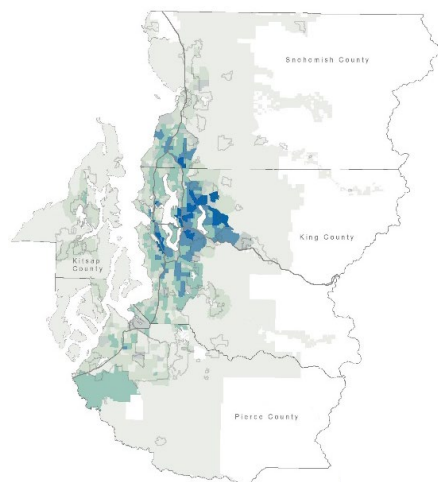


Settlement Patterns by Race and Ethnicity

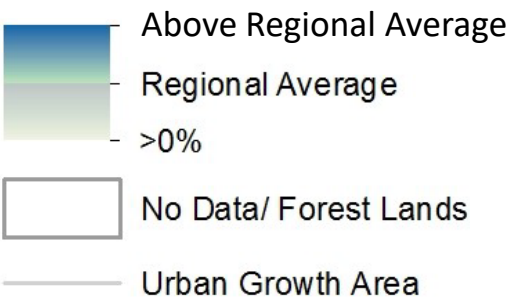
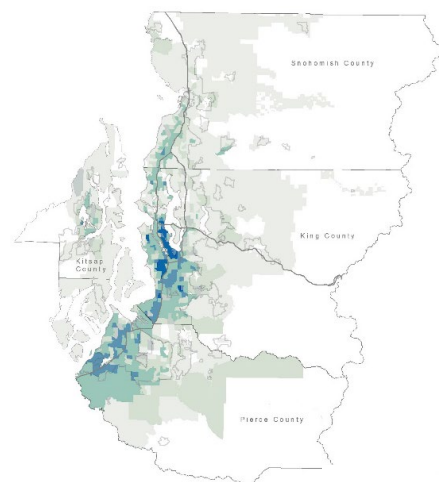
American Indian/Alaska Native



Asian

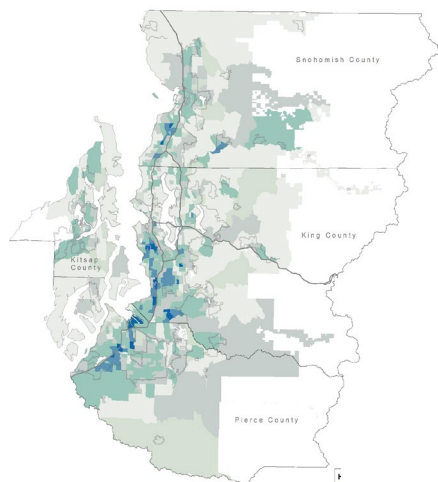


Black

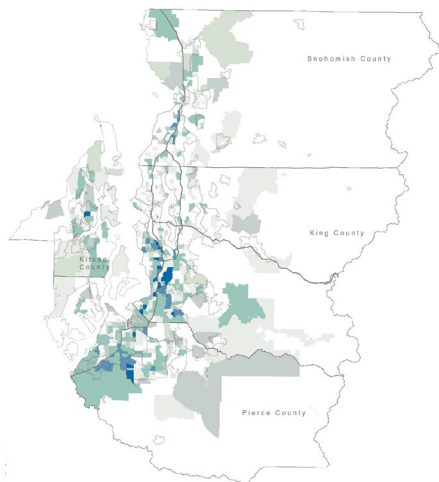


Source: American Community Survey, 2019 5-Year Estimates

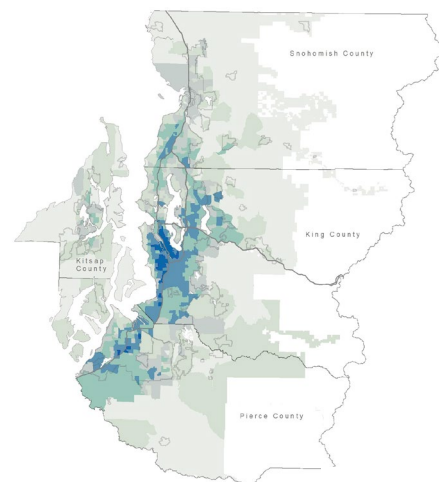
Hispanic/Latinx



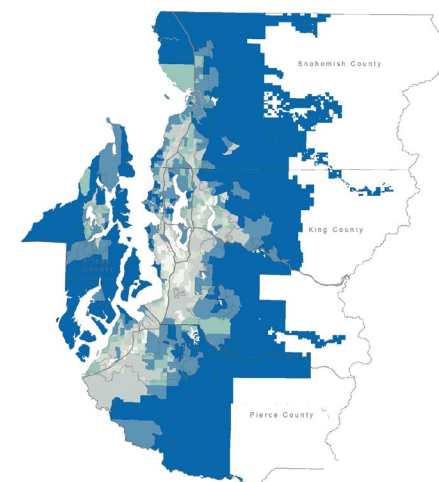
Native Hawaiian/Pacific Islander



People of Color

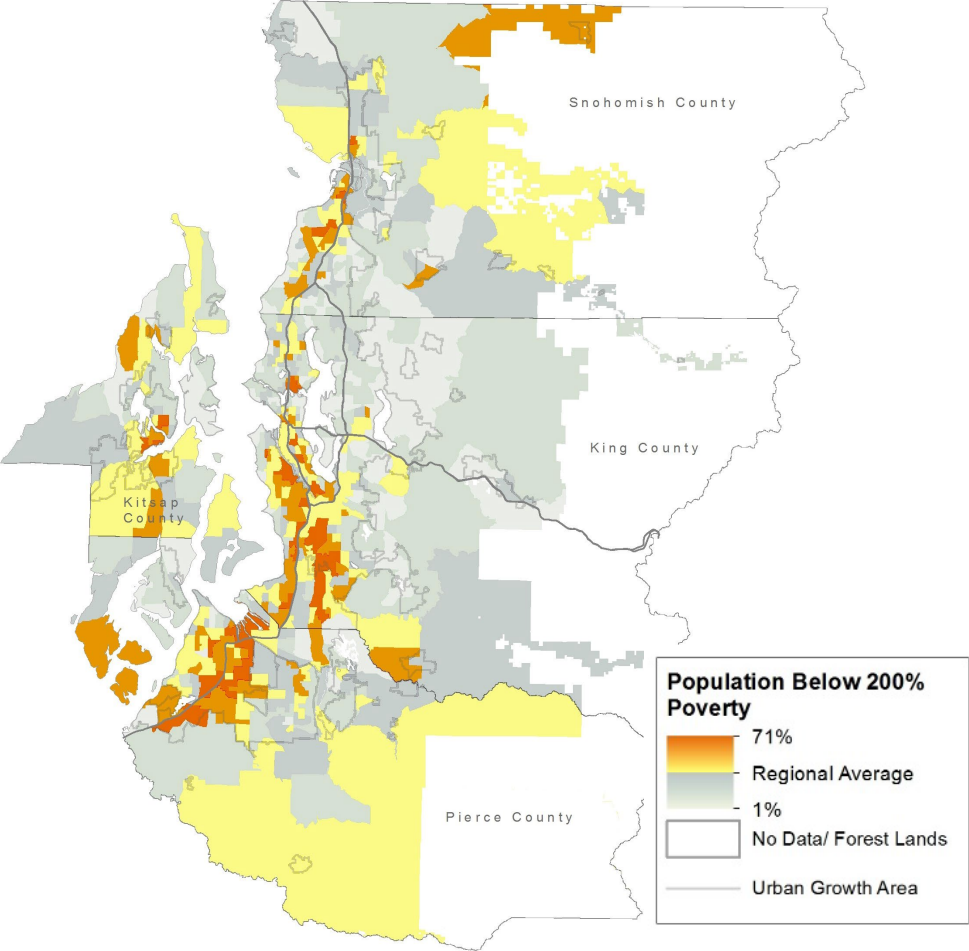


White Non-Hispanic

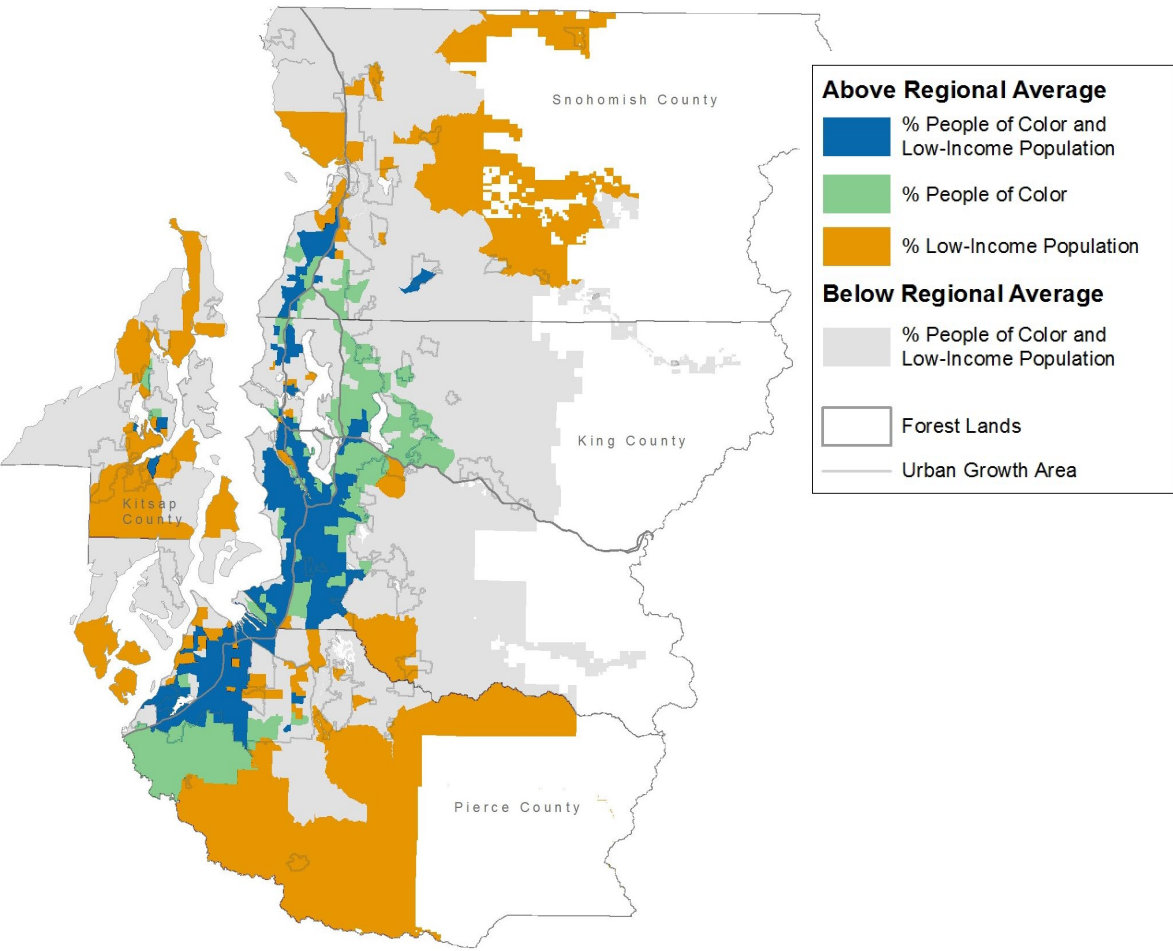


Low-Income Population

Population Below 200% Poverty



Intersection with People of Color

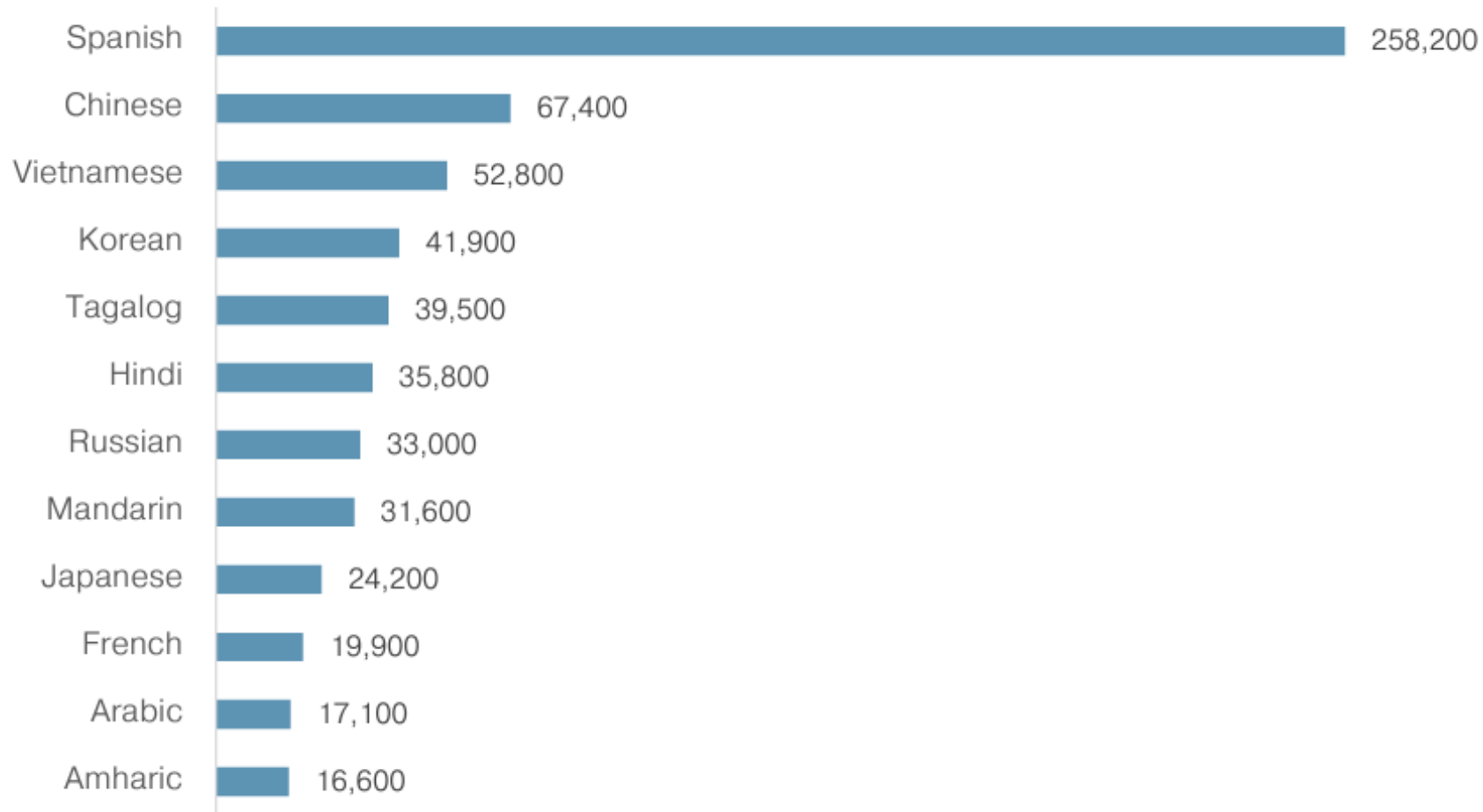


Source: American Community Survey, 2019 5-Year Estimates



Common Languages

Common Languages Spoken Other than English, Central Puget Sound



Source: American Community Survey, 2019 1-Year Public Use Microdata Sample

2024 Profile – Scope of Work

Revisit federal statutes and guidance

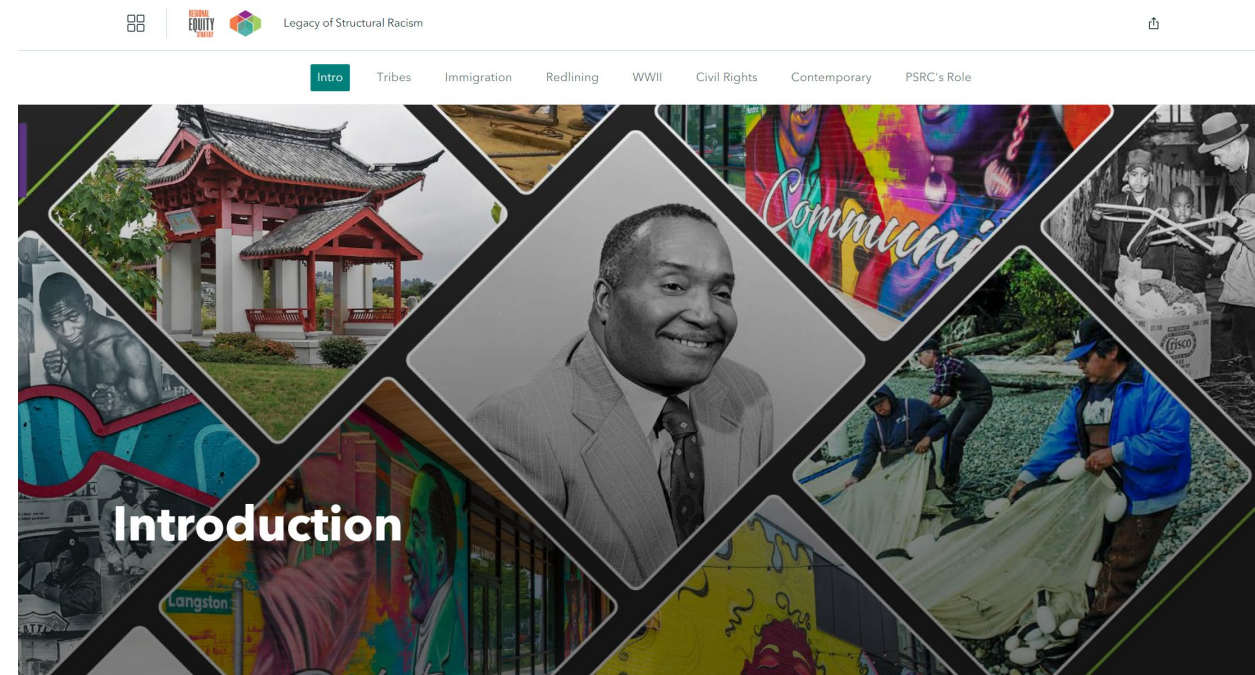
Review best practices at peer metropolitan planning organizations (MPOs)

Data development and analysis

- Update Race/Ethnicity reporting categories
- Incorporate technical improvements
- Refine table content, as needed

Final products

- PDF report for federal partners
- Interactive StoryMap report



Early Analysis of Peer MPOs

PSRC's analysis is advanced compared to peer MPOs

- Equity Focus Areas
- Intersectionality
- StoryMap interactive report

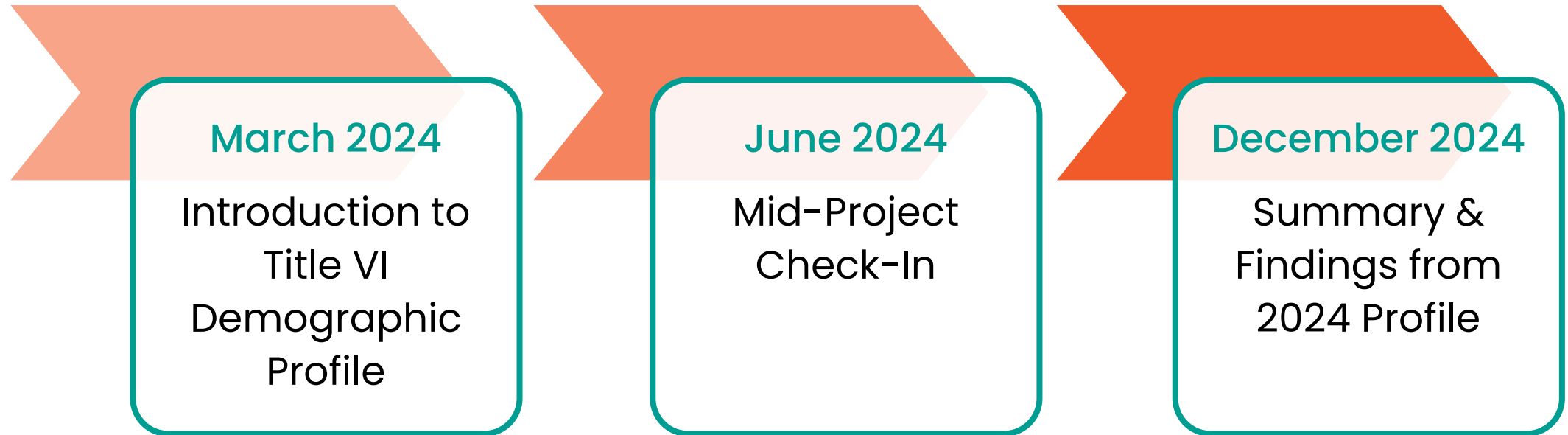
Some MPOs consider **additional data points**

- Public Health
- Education

More discussion is needed to determine if additional data points may warrant inclusion in PSRC's demographic profile

Next Steps

Project Check-Ins with Equity Advisory Committee



PSRC's 2024 Title VI Report **due October 1, 2024**

EAC Feedback

Questions for Equity Advisory Committee:

1. Questions about **Title VI demographic profile and its purpose?**
2. Feedback on **scope of work** for 2024 update to demographic profile?



Thank You!

Carol Naito

Program Manager, Data Applications
cnaito@psrc.org



Puget Sound Regional Council