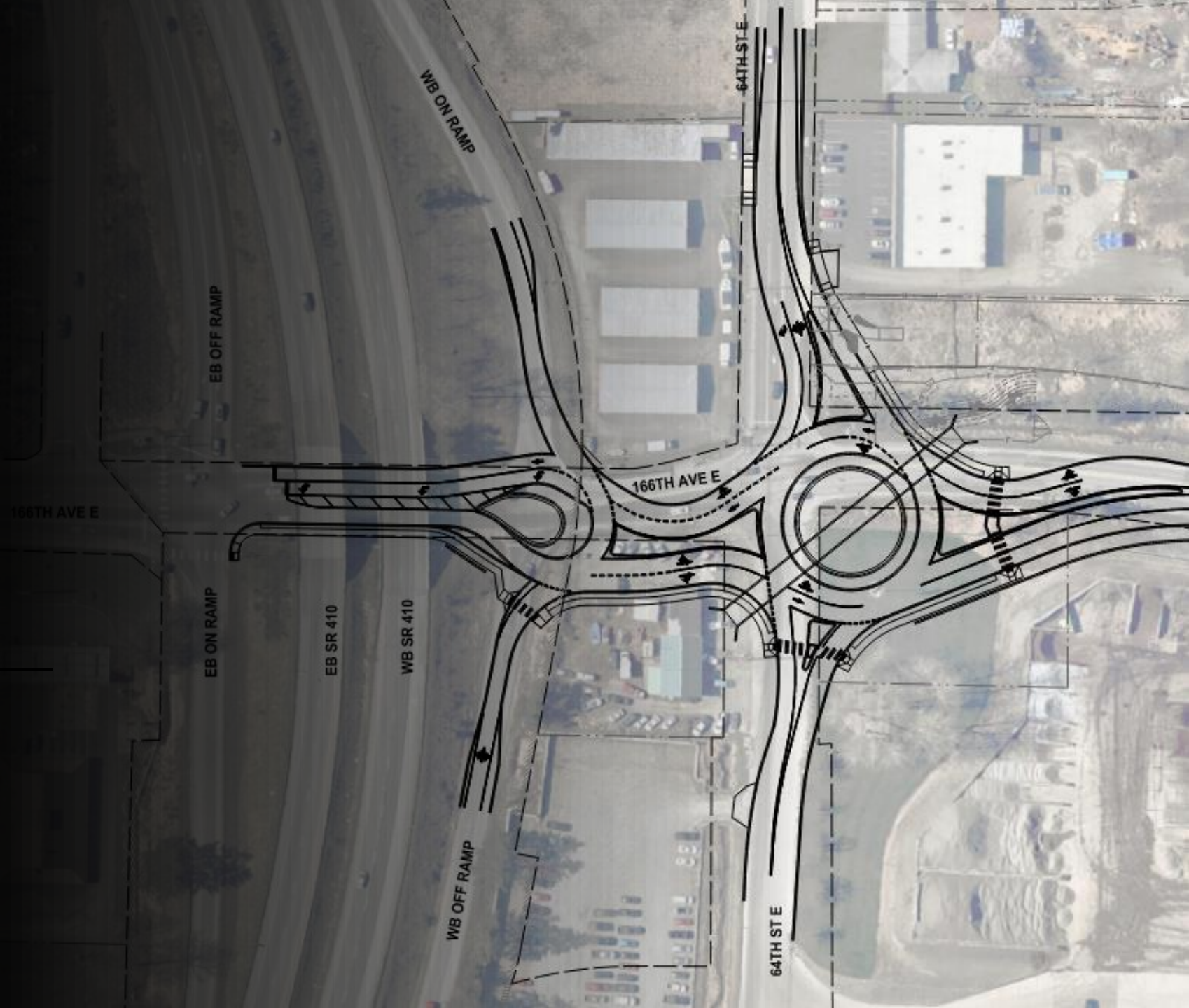


166th St Widening and Intersection Improvements



Courtney Littrell – Engineering Specialist

April 25, 2024





Impact on Regional Centers

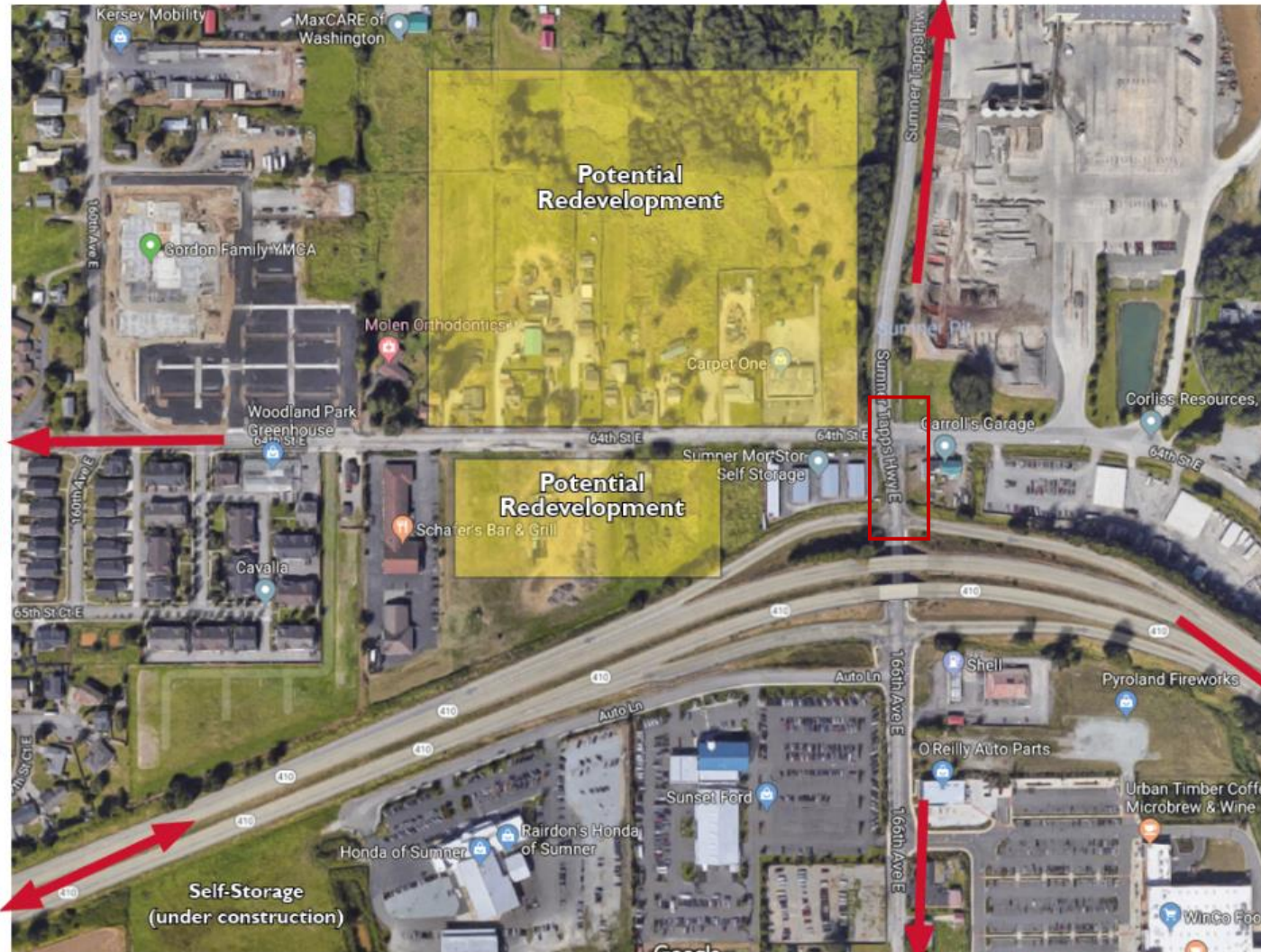
- Sumner-Pacific MIC
- **Business:** Regional warehousing, transportation, distribution, logistics support other MICs
- **Ports:** Freight Facilities and Foreign Trade Zones support Ports
- **Jobs:** Strong Employment supports Regional Growth Centers



Commuters from Sound Transit Station

Commuters from Tacoma, Seattle

Commuters from Auburn,
Lakeland Hills, Lake Tapps



Commuters from Orting,
Tehaleh, South Prairie

Project Location

- Southeast end of City limits
- At junction of SR410
- Captures commuters from other regional growth centers and large residential developments further south
- Interchange serves retail, residential, industry, potential redevelopment and the State's largest regional YMCA facility.

Current Conditions

- Level of Service F
- Two-Lane roadways
- Two signalized intersections on either side of SR410 WB on and off ramps



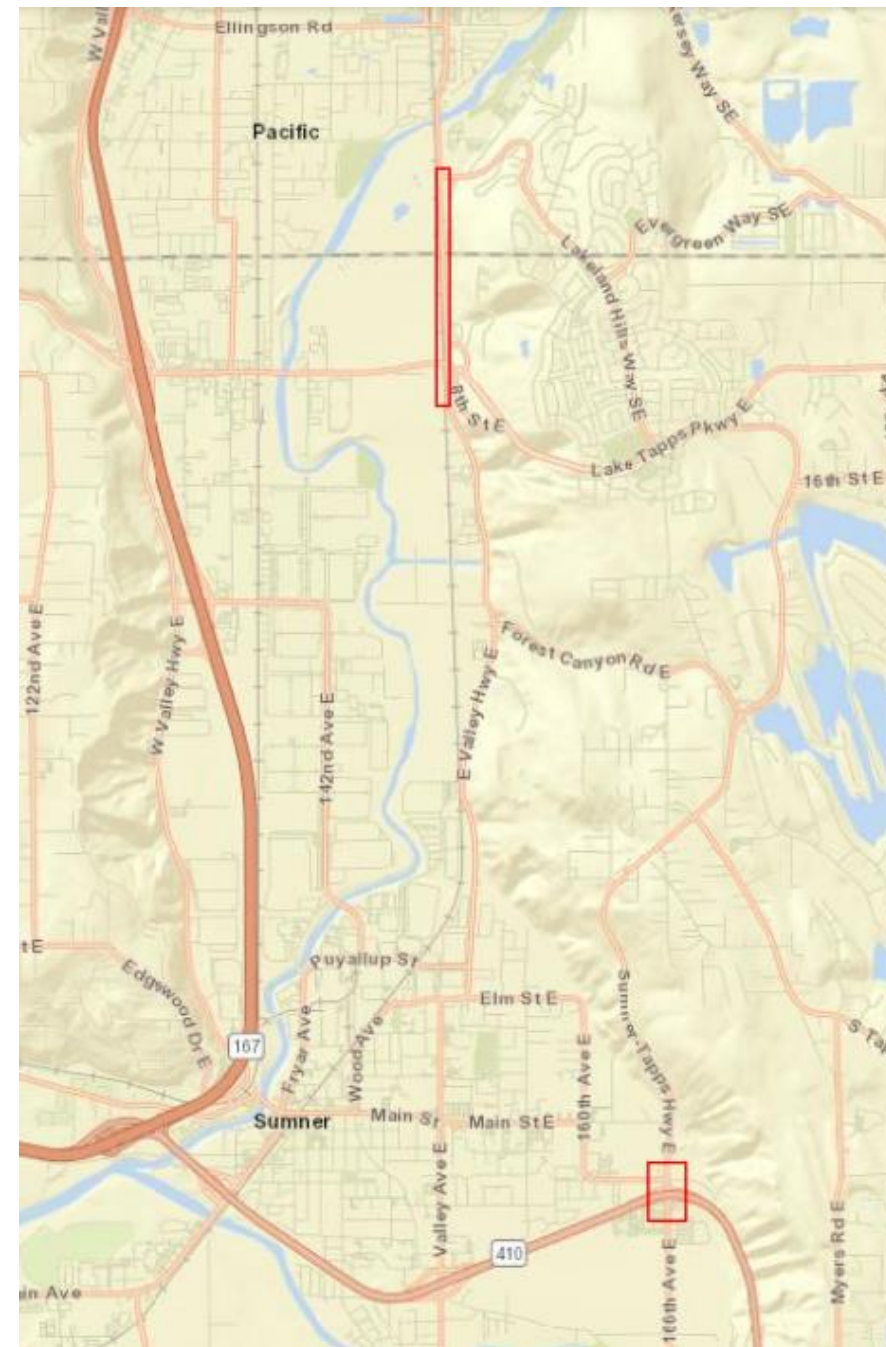
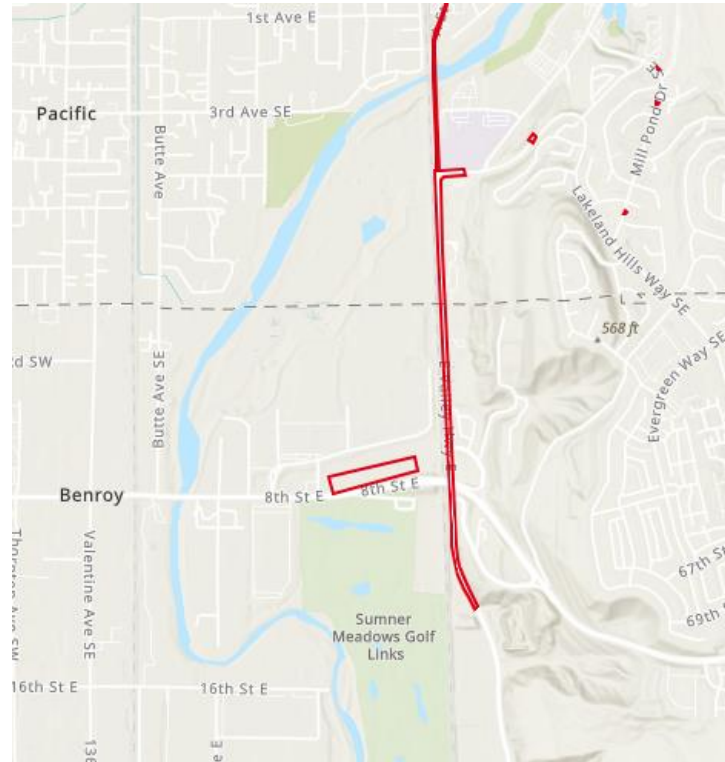
Area Growth

- Multiple multi-family developments are underway or completed the East Sumner Neighborhood (this area).
- Key strategy to fulfill Sumner's housing growth needs.
- Increased residential in area will exacerbate current conditions of this interchange.



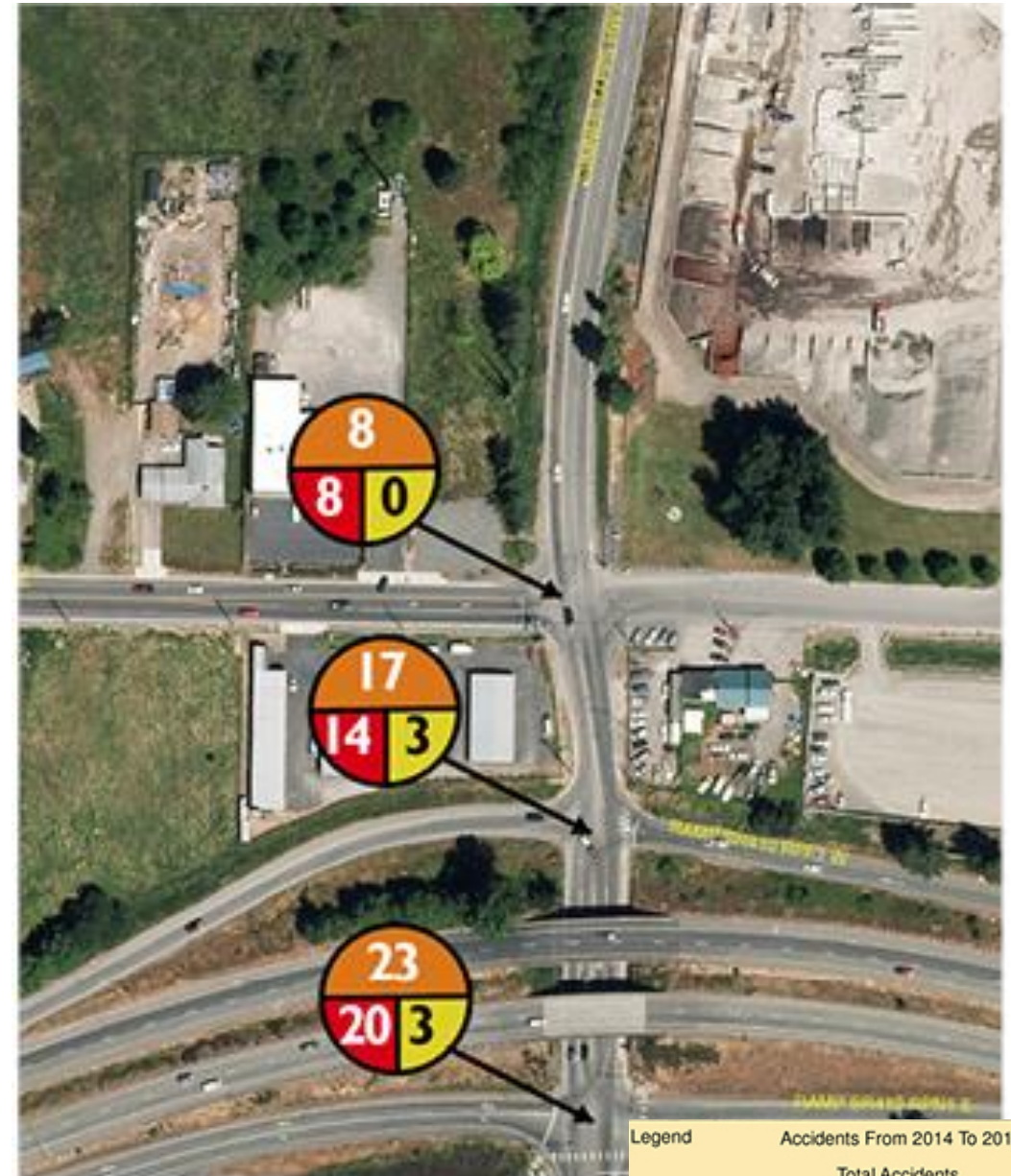
Missing Link

- Widening is under design in Auburn
- Connection of the two projects

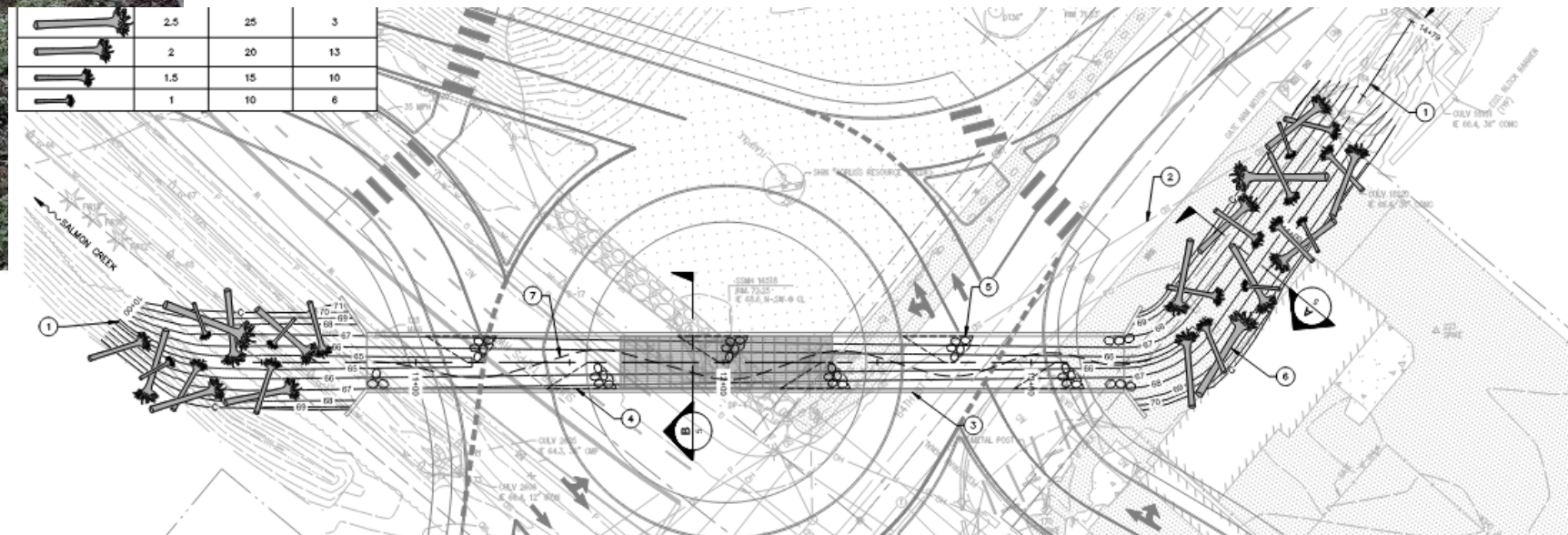


Increased Safety

- Adds bike and pedestrian paths that are nonexistent
- Reduces stop-and-go traffic, decreasing the potential for traffic accidents
- Creates a better flow of traffic



Commitment to the Environment





Project Partners

- Previous PSRC Support
- State Legislature
- Port of Tacoma
- Tribes (in process)

Ask – ROW Phase

- Design Funded and In Progress
 - Environmental in Progress, expected 2027
 - Project Design expected 2027

Funding Source	Amount	Status
Sumner City (Utility)	\$628,692	Secured
Sumner City (TIF)	\$448,355	Secured
Port of Tacoma	\$25,000	Secured
Total	\$1,102,047	100% Funds

- ROW – 13.5% Funded

Funding Source	Amount	Status
Sumner City (Local)	\$351,000	Reasonably Expected
STP (Federal)	\$2,249,000	This Request
Total	\$2,600,000	100% Funds

- Construction - Unfunded



166th/SR410 Double Roundabout