

180TH STREET CONNECTOR PROJECT

CITY OF ARLINGTON

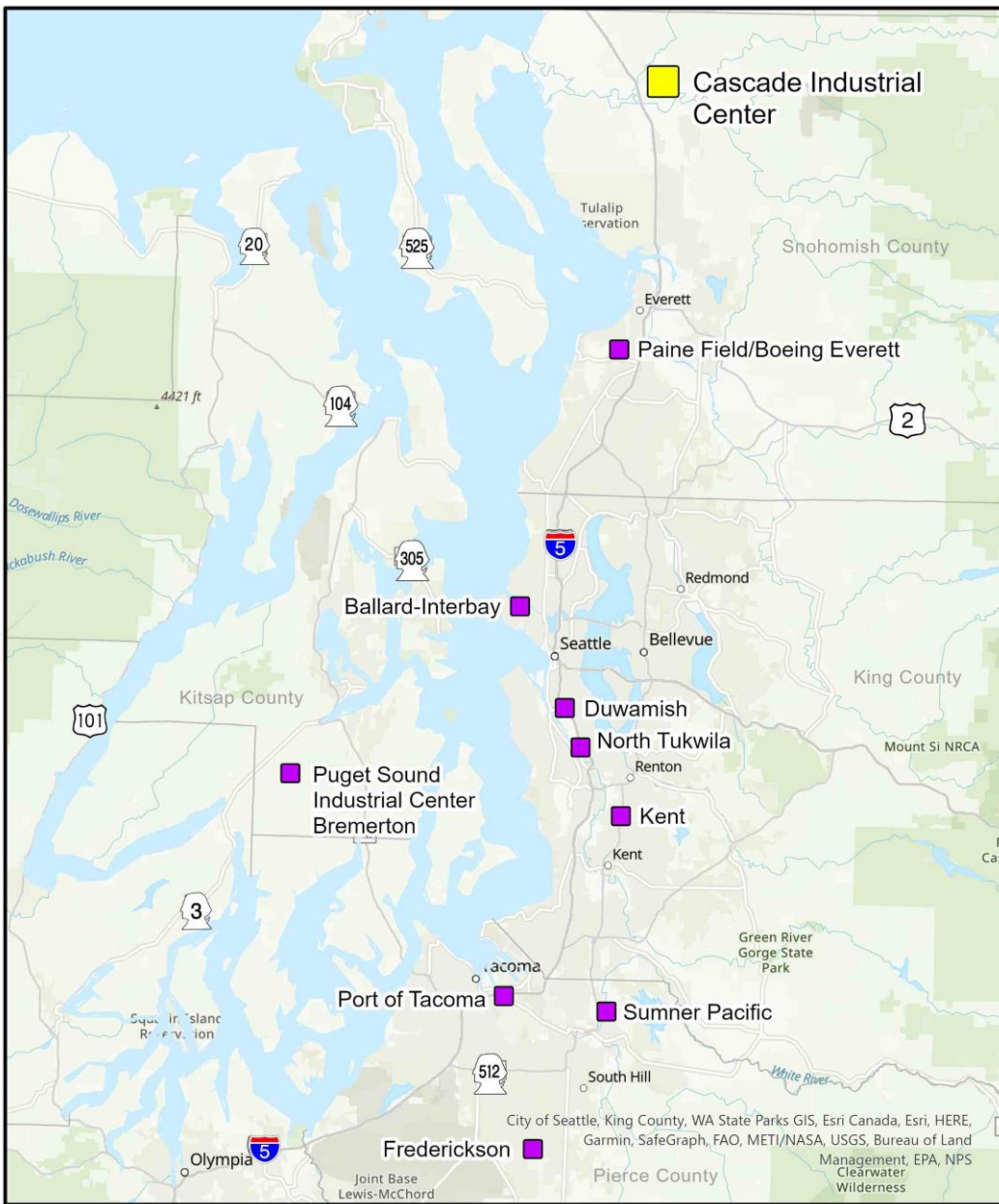


**CASCADE INDUSTRIAL
CENTER ARLINGTON**

PSRC 2024 FHWA Regional Project Presentations

- Presenter: Jim Kelly , City of Arlington Public Works Director
- Regional Center: Cascade Industrial Center
- Project Name: 180th Street Connector Project
- Funding Source: STP
- Grant Request: \$5 million

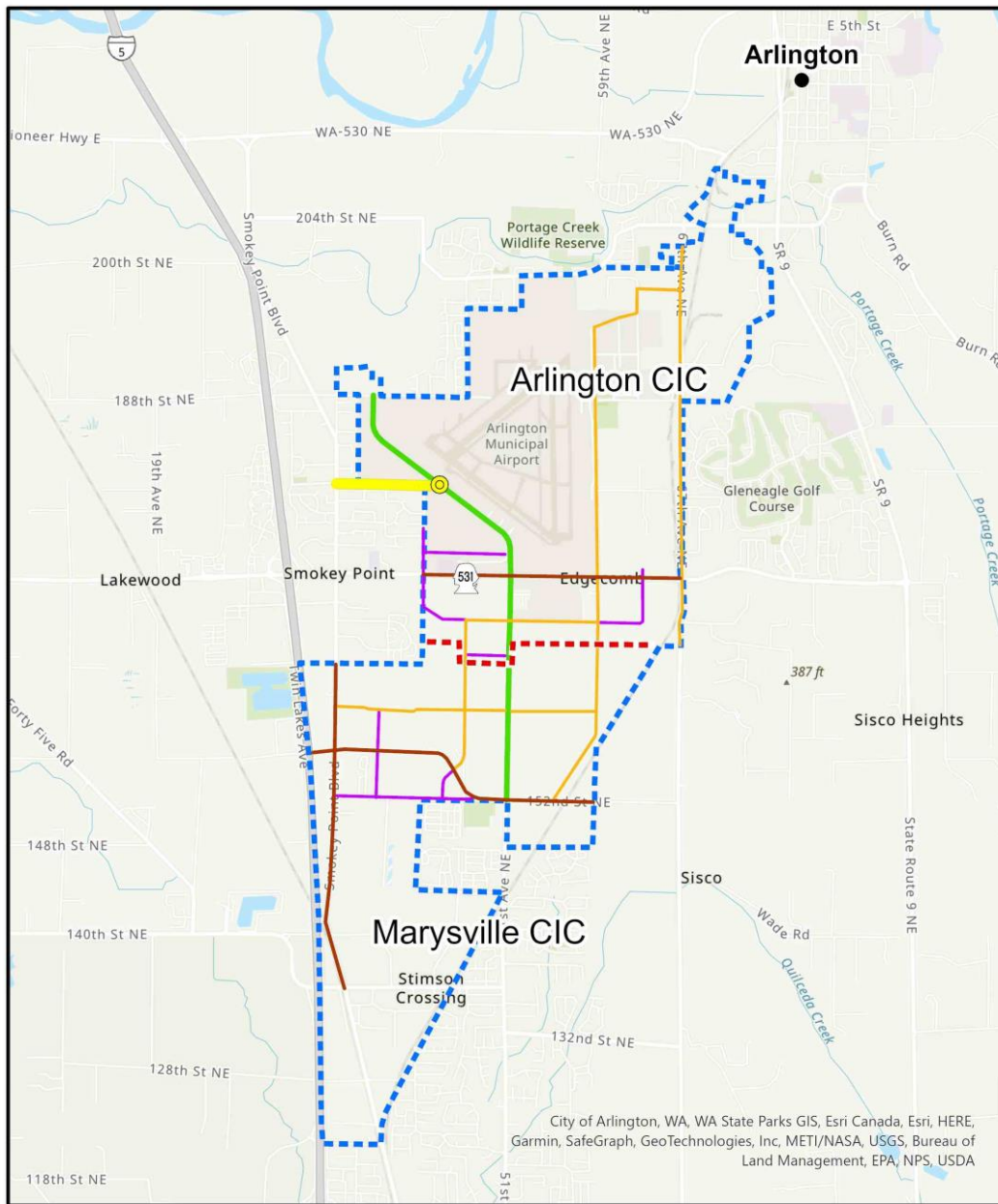




Cascade Industrial Center (CIC)

- PSRC has 10 designated regional Manufacturing Industrial Centers (MIC)
- CIC spans cities of Arlington and Marysville
- The Cascade Industrial Center was formerly the Arlington-Marysville MIC.
- The CIC Designated a PSRC Regional MIC (2019)
- Located in north end of the PSRC region
- CIC is hub of industrial activity and second-largest Manufacturing-Industrial Center in Snohomish County
- Since PSRC designation, industrial development in the CIC has expanded very rapidly.
- Arlington and Marysville are working hard to keep infrastructure on pace with development.





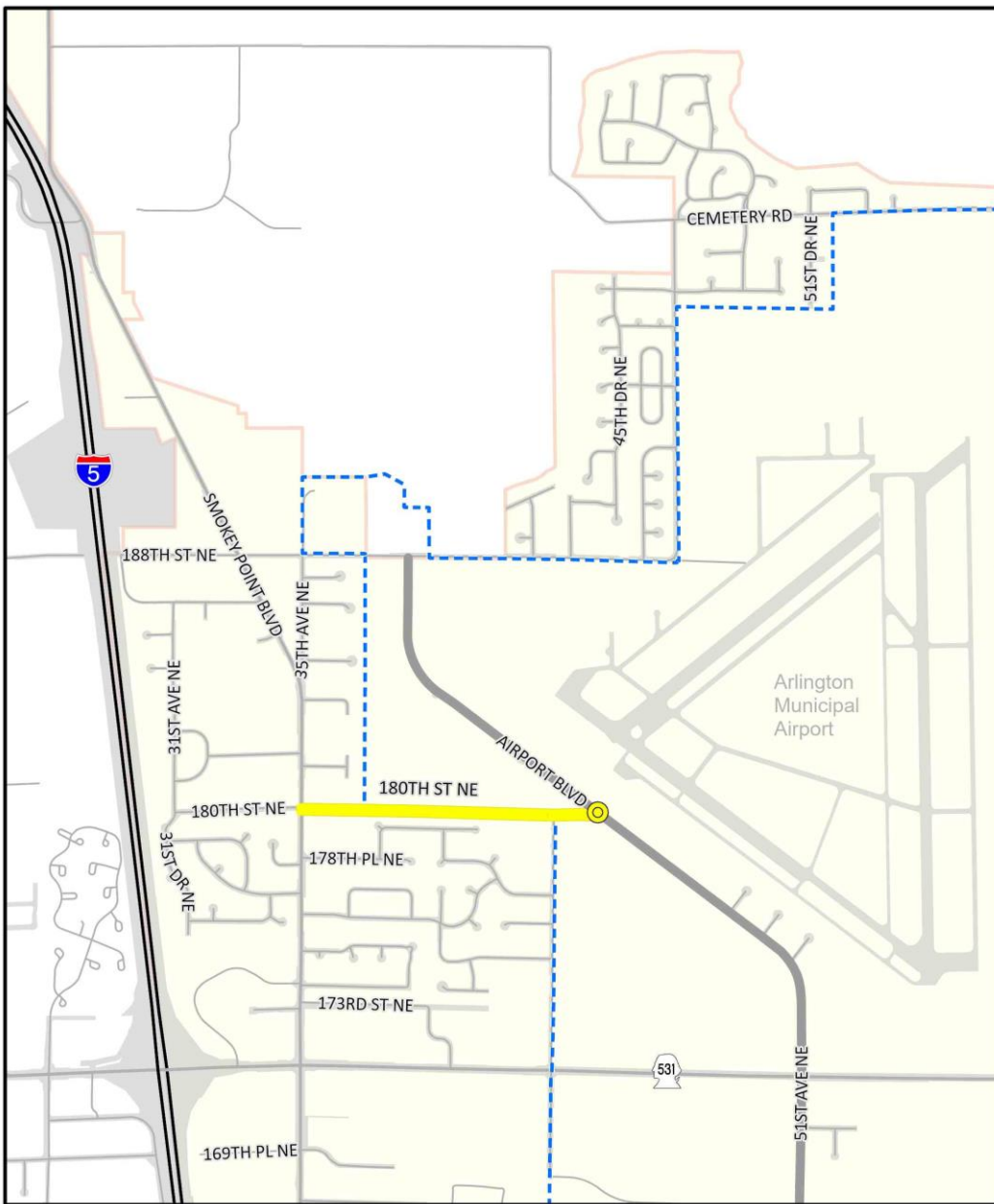
Cascade Industrial Center (CIC)

- 4,020 Acres in Arlington & Marysville
57% in Arlington, 43% in Marysville
- Studies Completed Supporting CIC
 - *CIC Market Study (2016)*
 - *CIC Existing Conditions Report (2018)*
 - *CIC Subarea Plan (2019)*
- Significant Industrial Growth since 2019
- Arlington Airport West Side Industrial Development
 - 66 acres in construction (SmartCap)
 - 18 Dedicated for higher education “Center of Excellence”
 - Only 40 acres remain for industrial development out of 2,296 acres in Arlington CIC
- Arlington and Marysville Joint Transportation Study

The 180th St Connector Project Supports Continued Growth and Development of the CIC



City of Arlington
180th St Connector



180th Street Connector – Project Overview

- Project to design and construct a 3,300-ft multimodal road connecting two arterials, Airport Blvd to Smokey Point Blvd (SPB)
- 2,640-feet inside Airport (80%) and 660-feet outside Airport (20%)
- Roundabout at APB Blvd, 4-way stop controlled intersection at SPB
- 200-ft wide forested area preserved on north side of alignment
- Safety design components include curb bulb-outs, RRFB's at crosswalks, street & ped lighting
- Highly permeable soils, all runoff will infiltrate (no ESA consultation)
- 12-ft wide multiuse trail will connect to the Airport Trail on Airport Blvd with connections to Arlington trail network
- Provides pedestrian and bike access to transit on SPB and access to Smokey Point Transit Center

The 180th St Connector Project Has Numerous Features Supporting a Safe and Environmentally Friendly Design

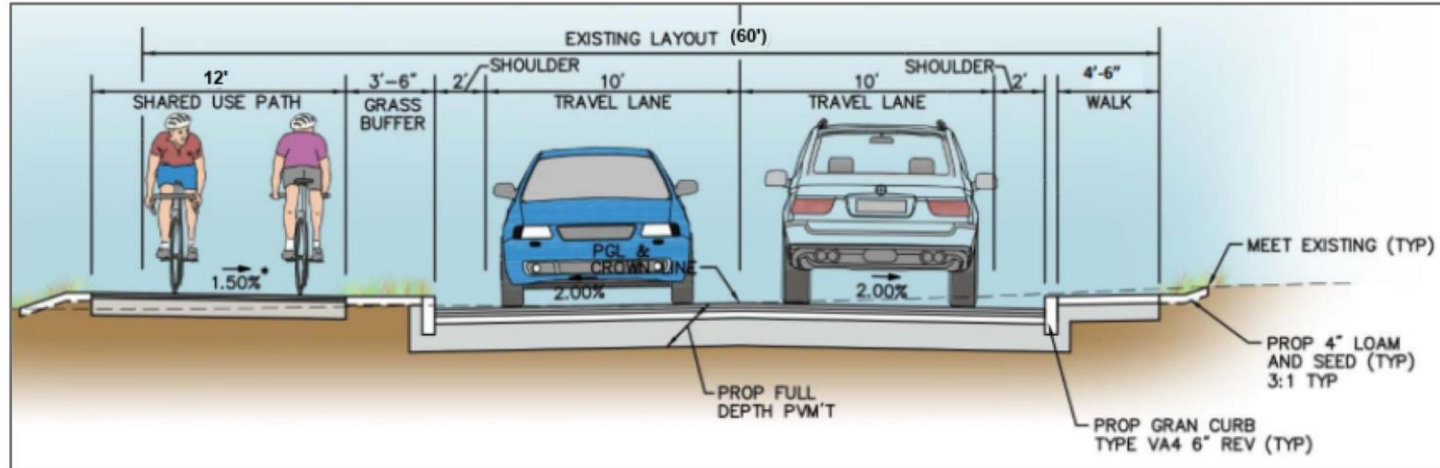


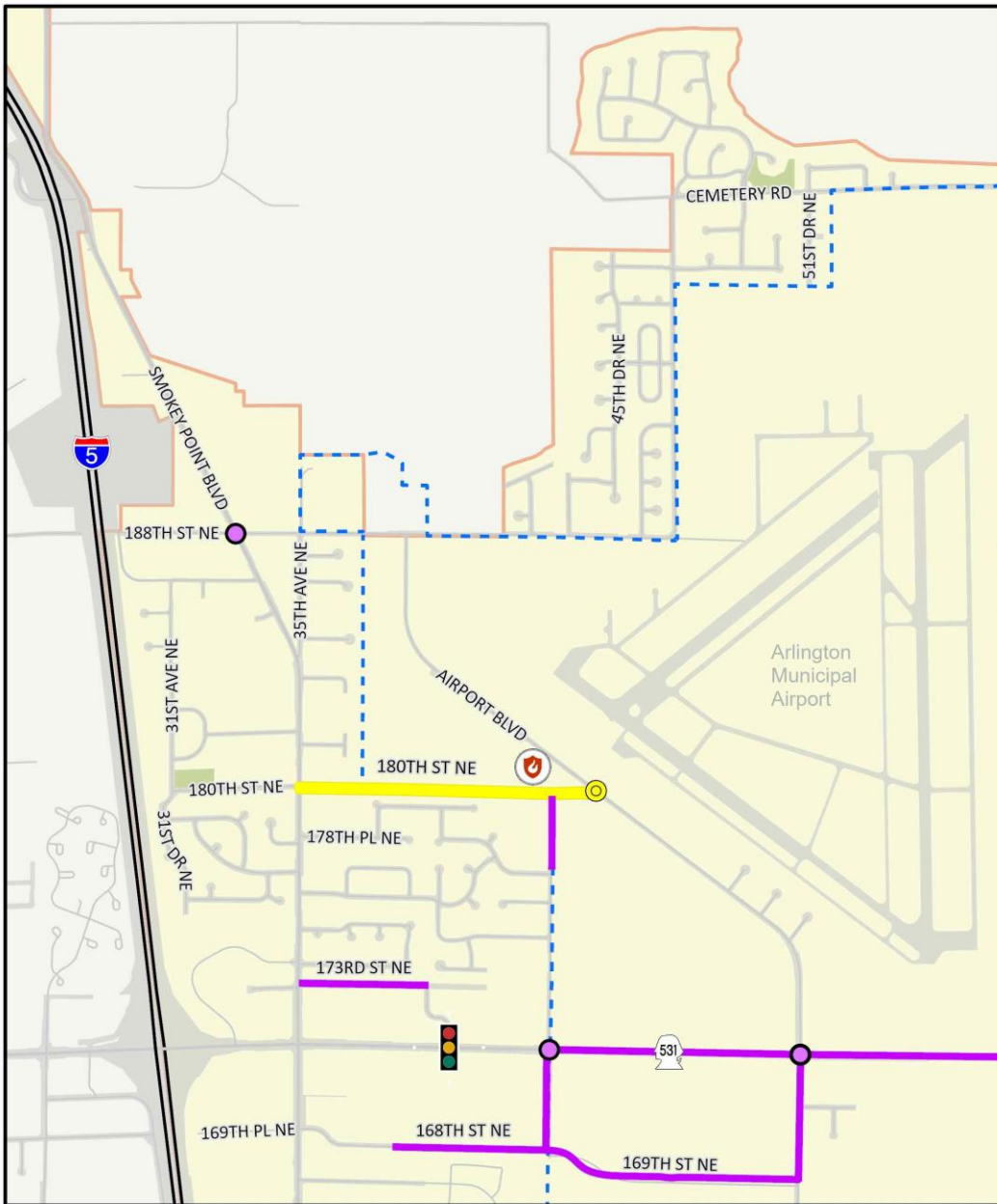
City of Arlington
180th St Connector

180th Street Connector – Project Profile

- Includes grade separated sidewalk (S) and a 12-ft wide multiuse trail (N),
- Includes street lights, street amenities, landscaping and local area art work,
- Pedestrian safe crosswalks with RRFB
- Street width and turning radius to handle freight movement (VWB-67)
- Roundabout in Airport Blvd will also be traffic calming measure

The 180th St Connector Project Supports Pedestrian, Commuter and Freight Movement





180th Street Connector – Part of Larger Plan

- 180th Street is part of a larger CIC transportation plan
- Transportation Plan follows PSRC development policies
- Transportation Plan follows CIC Subarea Master Plan policies
- Transportation projects recently constructed or under construction:
 - 173rd St Phase I – SPB to 40th Ave
 - 40th Ave Intersection and Corridor Project
 - 43rd Ave Roundabout Project
 - 43rd Ave Roadway Improvements
 - 51st Ave Roadway Improvements
 - 169th New Road Construction

The 180th St Connector Project is a Critical Link in the CIC and Smokey Point Transportation Plan



City of Arlington
180th St Connector

Bringing it All Together

- SUPPORTS CENTER - Supports growth of a PSRC designated MIC, the Cascade Industrial Center
- SUPPORTS JOB GROWTH – Project will support
- FUTURE HIGHER EDUCATION FACILITY – Project provides access to an 18-acre area reserved for higher education and training facilities for advanced manufacturing
- ALL RUNOFF INFILTRATED – Project is within area of high permeable soils, all runoff will be infiltrated (no ESA consultation)
- ROW AVAILABLE – 80% of the project alignment is within Airport boundary and the City has the ROW, remaining 20% is with a single developer going through Land Use process
- SAFETY – Road design will incorporate many
- SUPPORTS EQUITY DIVERSE AREA – Project is located within an area with a higher-than-average population of low income, persons with disabilities, and youth.



Thank you for your time.

Questions?

