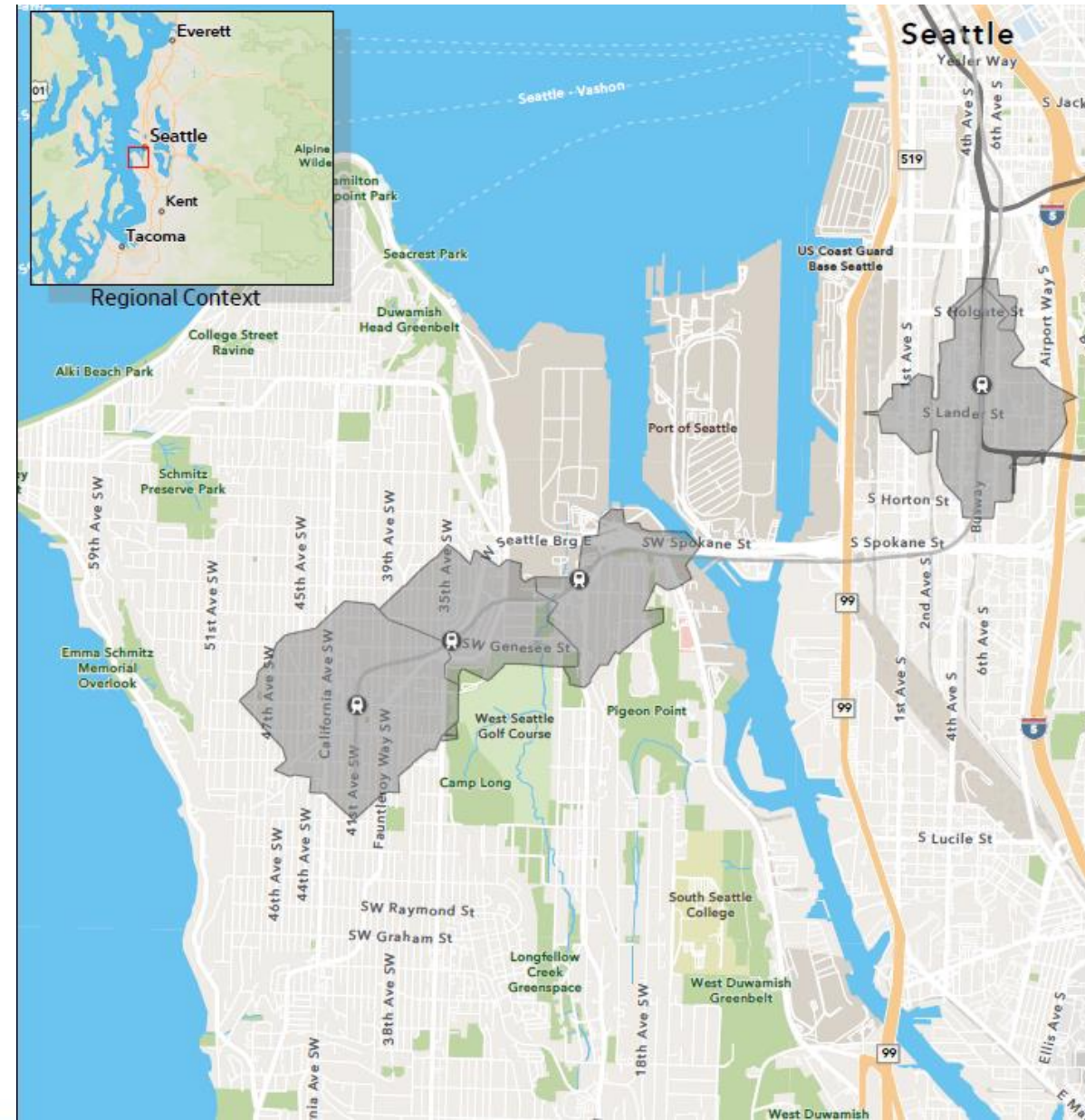


West Seattle Link Extension (WSLE) Station Access



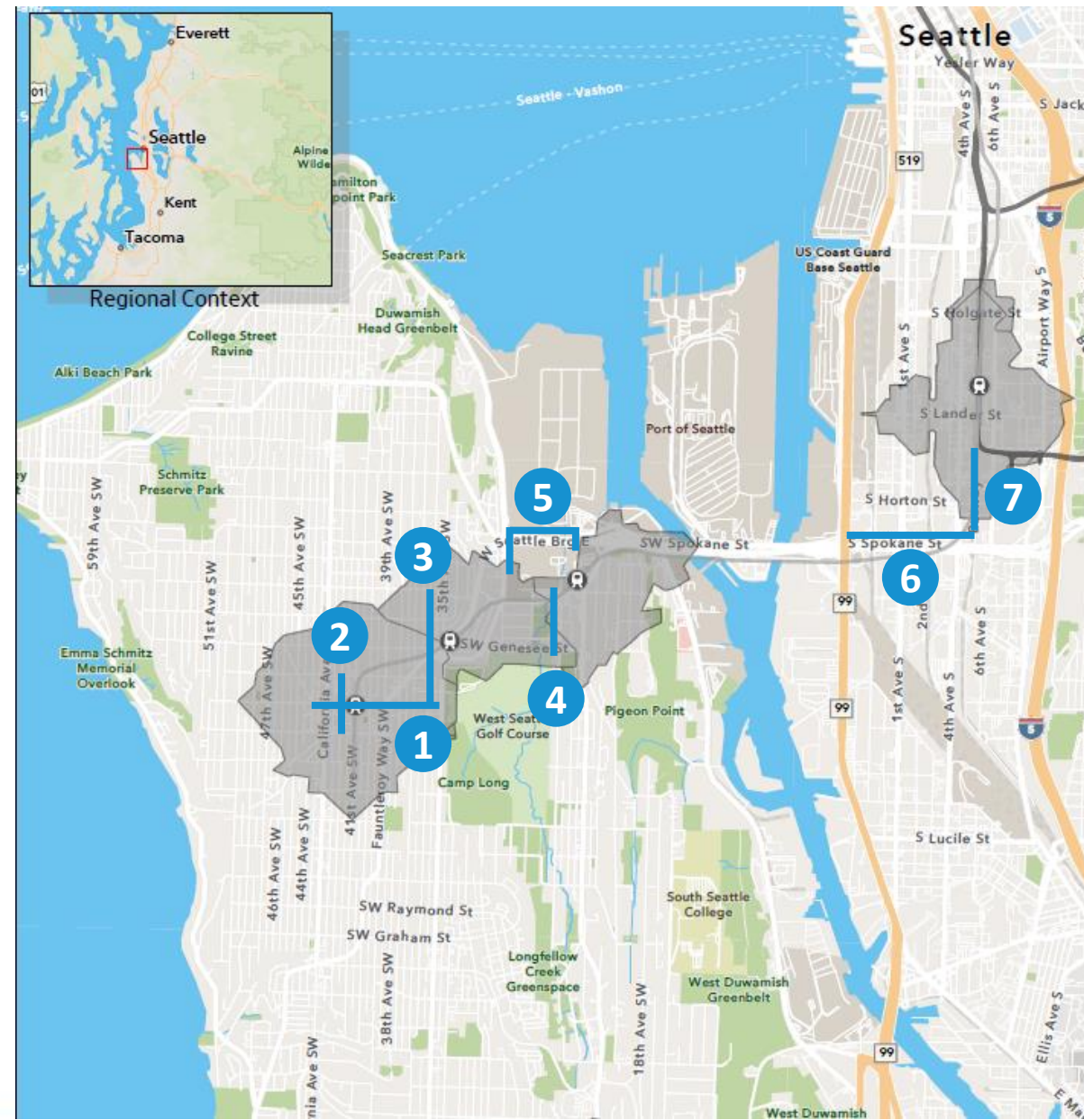
Project Location

- Walksheds/bikesheds for upcoming SODO, Delridge, Avalon, and West Seattle Junction light rail stations
- One within designated Manufacturing/Industrial Center
- Link Light Rail extensions will provide quick and frequent light rail access to downtown job centers and regional destinations



Project Location Details

1. SW Alaska St (44th Ave SW to 35th Ave SW)
2. 42nd Ave SW (SW Oregon St to SW Edmunds St)
3. 36th Ave SW (SW Charlestown St to SW Alaska St)
4. 26th Ave SW (SW Andover St to SW Genesee St)
5. Alki Trail connections (SW Avalon Way to 23rd Ave SW, including portion of Avalon south of WSB)
6. S Spokane St (SODO Busway to E Marginal Way)
7. SODO Busway (S Forest St to S Spokane St)



Project Goals

Develop 100% Designs for nonmotorized access projects that:



Safety - Make it safer and more comfortable for people of all ages and abilities to walk, roll, and bike to the future West Seattle Link Extension stations



Access and Mobility - Make the neighborhoods surrounding the future light rail stations more walkable and bikeable



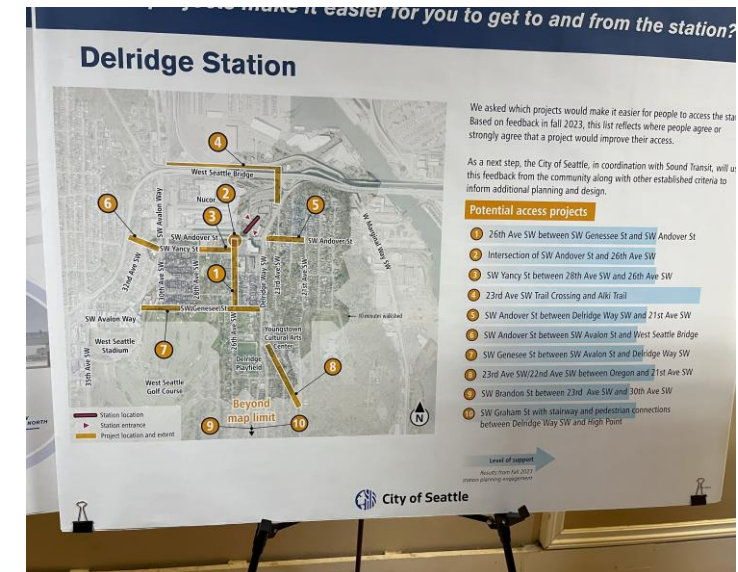
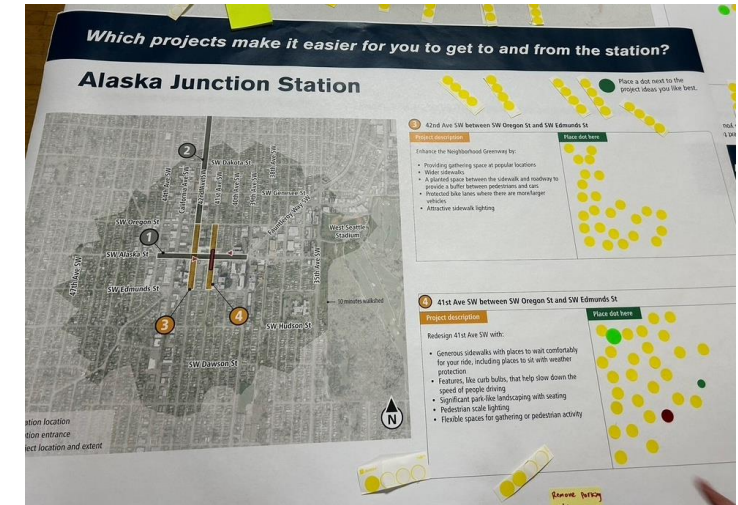
Climate - Reduce greenhouse gas emissions and VMT by making other travel modes more viable and attractive



Equity – Invest in neighborhoods that have historically received less funding, such as Delridge and SODO. Design projects for all ages and abilities.

What We've Heard From Community

- Community members weighed in on which nonmotorized access projects they would support via:
 - Fall 2023 Open House
 - Online Survey (Oct-Dec 2023): received 1,220 completed surveys and 918 partially completed surveys
- As an example, received 102 write-in survey responses for the Delridge Station:
 - 28 responses asking for **pedestrian improvements** in the area (e.g. better sidewalk system, more crosswalks, improved visibility of people crossing streets, more stair maintenance)
 - 17 responses asking for **protected bike lanes**
 - 13 responses asking for **traffic calming measures**



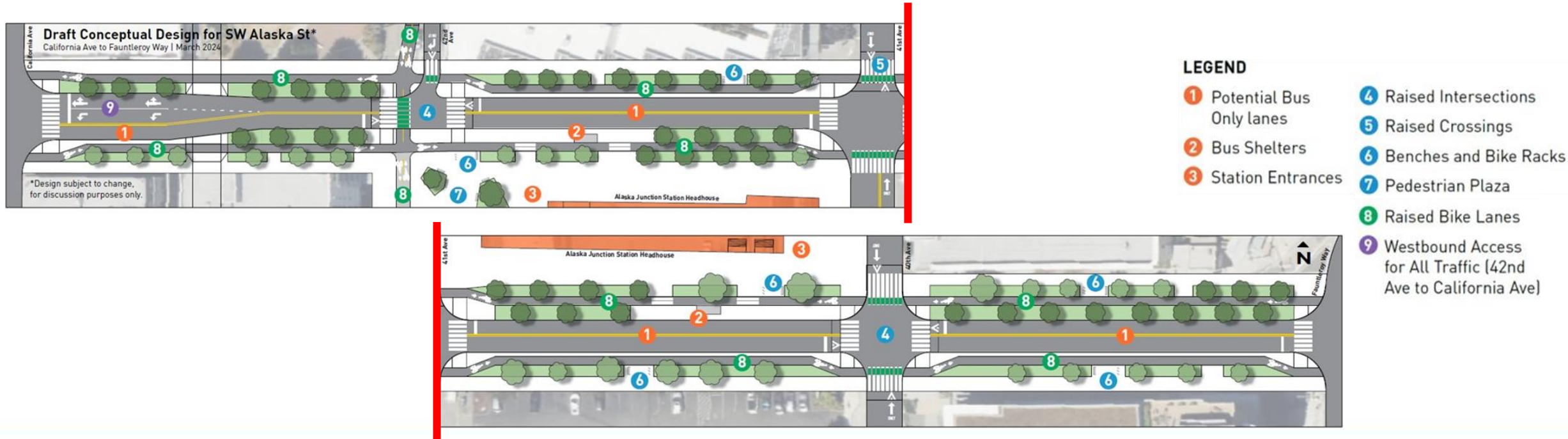
Project Elements

- Protected bike lanes, improved sidewalks, neighborhood greenways, and a multi-use trail connecting directly to stations
- Safe crossing opportunities for people walking, rolling, and biking
- Bus stop improvements and transit amenities
- Plazas, pedestrian lighting, greenery, wayfinding, and other amenities to create a vibrant, inviting space for people



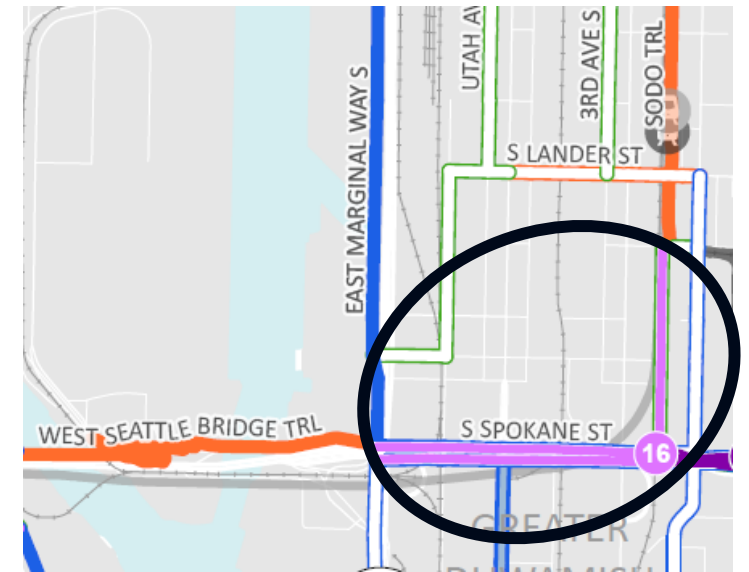
Spotlight - SW Alaska St & 42nd Ave SW

- New pedestrian plaza at the doorstep of the new station on 42nd Ave SW at SW Alaska St (#7 below)
- Sidewalk and landscape upgrades
- Potential transit-exclusive segment on SW Alaska St
- Protected bicycle lanes on both SW Alaska St and 42nd Ave SW for all ages and abilities
- “Mobility hub” environment with space to linger, transfer between rail/bus/bikeshare etc., and enjoy vendor services or other public amenities



Spotlight - SODO

- Create new bicycle connection that connects SODO to West Seattle Bridge Trail, E Marginal Way protected bike lanes, and areas south of S Spokane St (bicycle catalyst project #16 in the Seattle Transportation Plan)
- SODO is a challenging and uncomfortable environment for people biking given high motor vehicle speeds and freight presence
- Currently no facilities for bicyclists on S Spokane St
- SODO Trail currently ends at S Forest St – plan to extend trail south to S Spokane St using SODO Busway, which will be closed to buses and house new light rail alignment



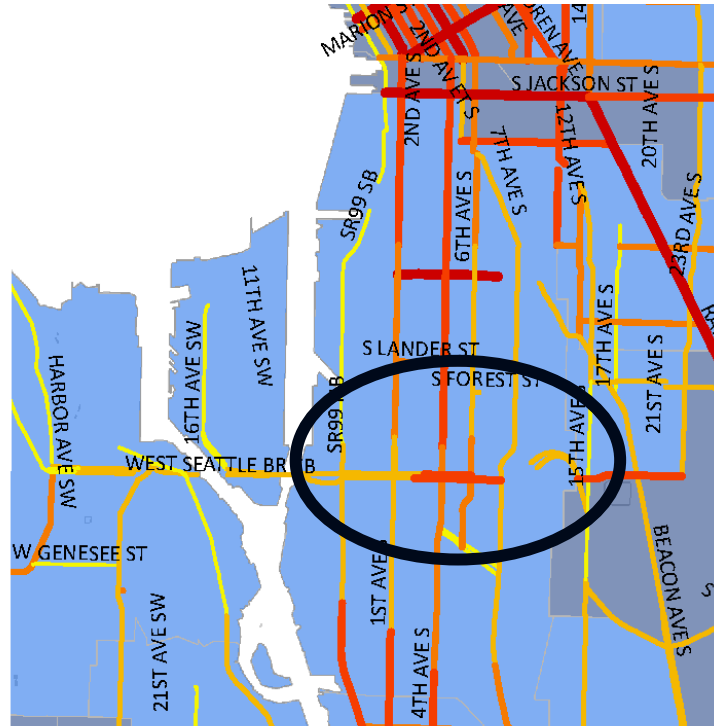
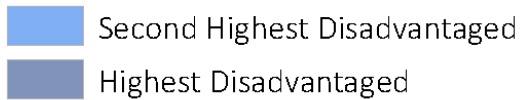
Safety Challenges in SODO

High Injury Network

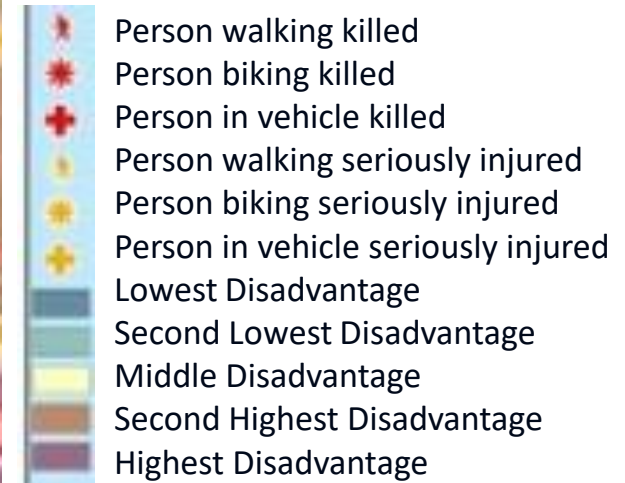
High Injury Network Score



Racial and Social Equity Composite Index



History of Serious Injury and Fatal Collisions



Spotlight - Delridge

- Improved connection for walking and biking from Delridge Station to Alki Trail
- Neighborhood Greenway improvements on 26th Ave SW to enhance access to the station for people walking/biking from Delridge
- New pedestrian plaza and multi-use trail on 26th Ave SW between Yancy St and Andover St via street closure
- Enhanced crossing at Genesee St & 26th Ave SW
- Spot improvements near the station including crossing enhancements, landscaping, wider sidewalks





Primary Criteria: Air Quality and Sustainable Growth

- Support an estimated 28,000 daily riders at four new stations – huge potential to reduce VMT via mode shift
- Expand non-motorized access to the region's largest and densest job centers
- Create active public spaces that encourage walk, bike, and roll trips throughout our Regional Growth Centers, Manufacturing/Industrial Centers, and the nearby Countywide Centers



Secondary Criteria: Safety and Equity

- Create “all ages and abilities” access to regional transit options
- Provide protection and separation for our most vulnerable users
- Design streets to reduce speeding
- Place investments in our Intersectional Equity Focus Areas, with unusually high rates of People of Color and People with Low Incomes

Grant Request

- \$5.5M to complete PE
- Ready to obligate by 2027 or earlier
- Requesting STBG funds but also eligible for CMAQ and/or Carbon Reduction

