



North Creek Regional Trail – Phase II

Snohomish County

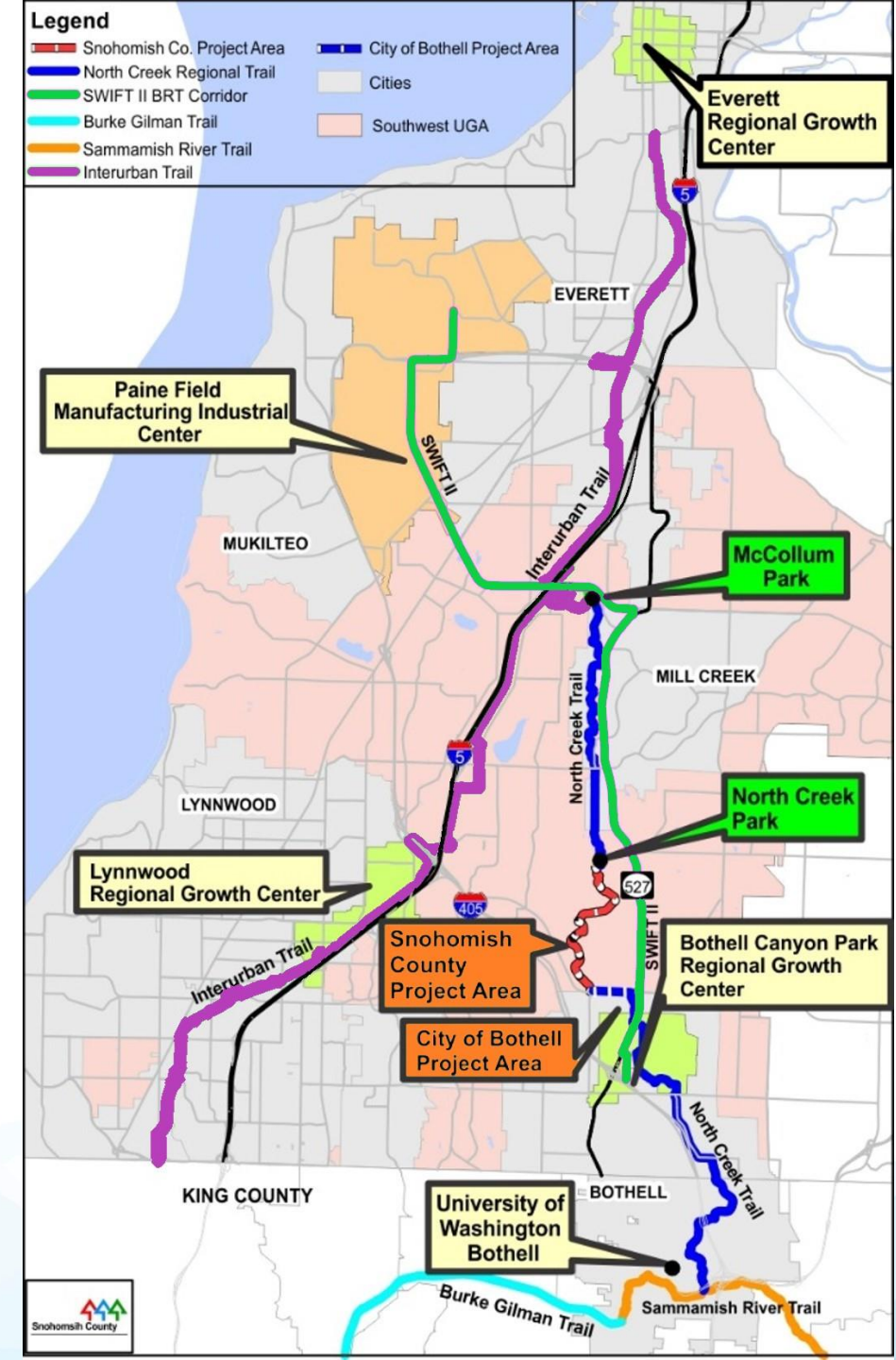
Presented by David Lee, P.E.



Snohomish County

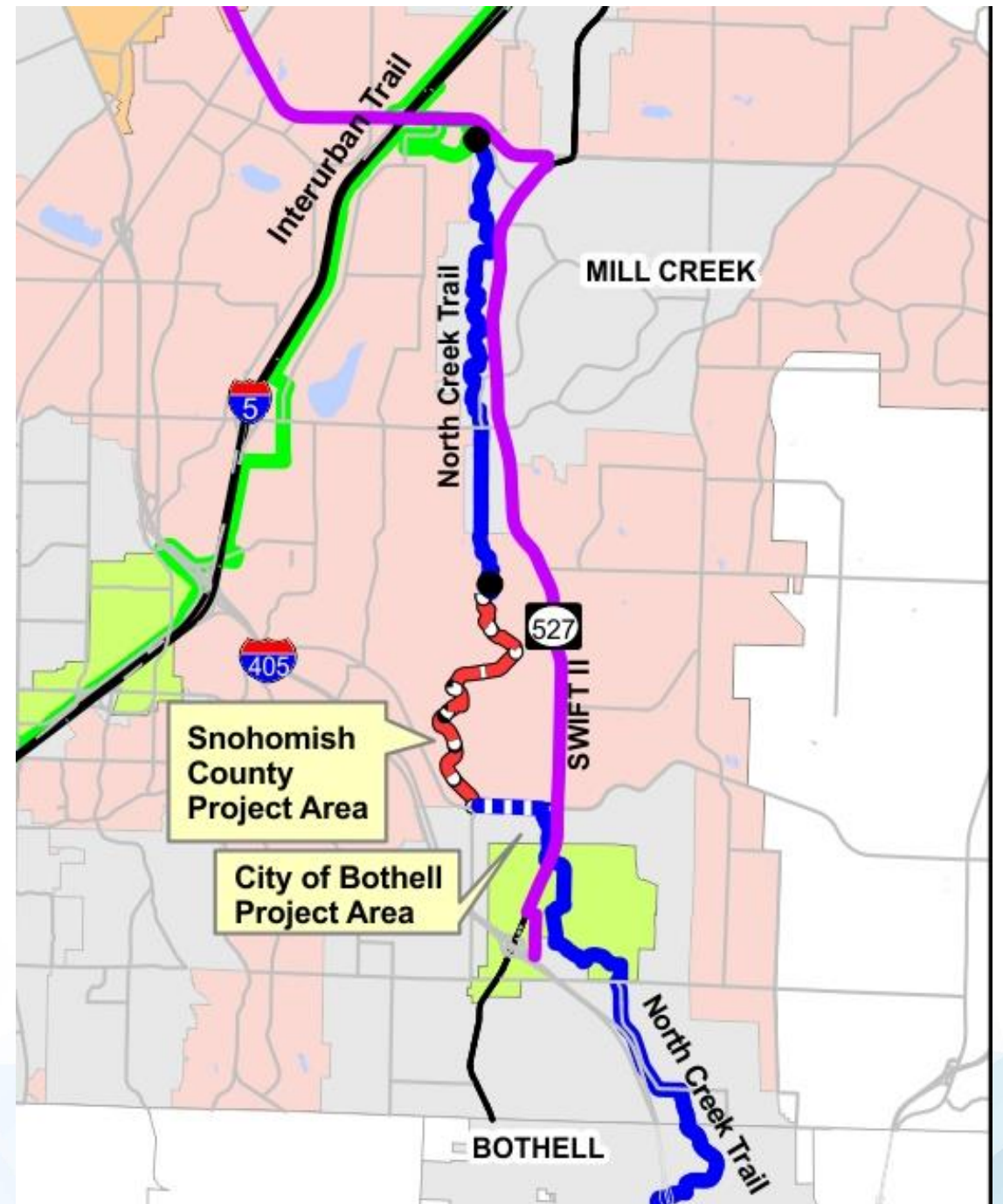
Regional Growth Centers and connectivity

- Everett Regional Growth Center
- Paine Field Manufacturing Industrial Center
- Lynnwood Regional Growth Center
- Bothell Canyon Park Regional Growth Center
- University of Washington, Bothell
- McCollum Park
- North Creek Park
- SWIFT “Green” Line
- SWIFT “Orange” Line



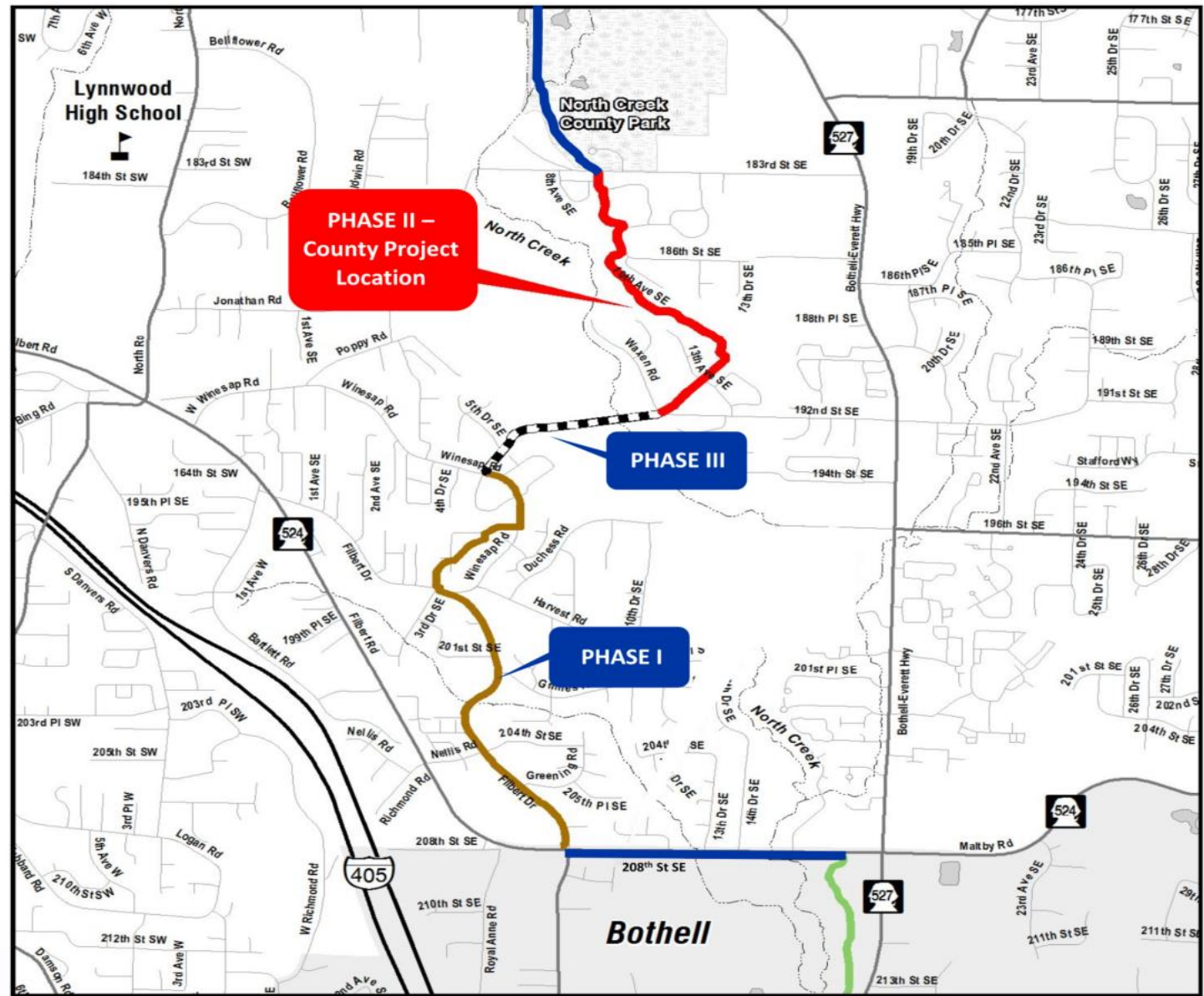
Project Area

- Connects with City of Mill Creek portion of the North Creek Trail
- Connects with the Interurban Trail via 128th Street SE
- Connects with City of Bothell portion of the North Creek Trail
- Connects with the Regional Sammamish River/Burke-Gilman Trail in King County

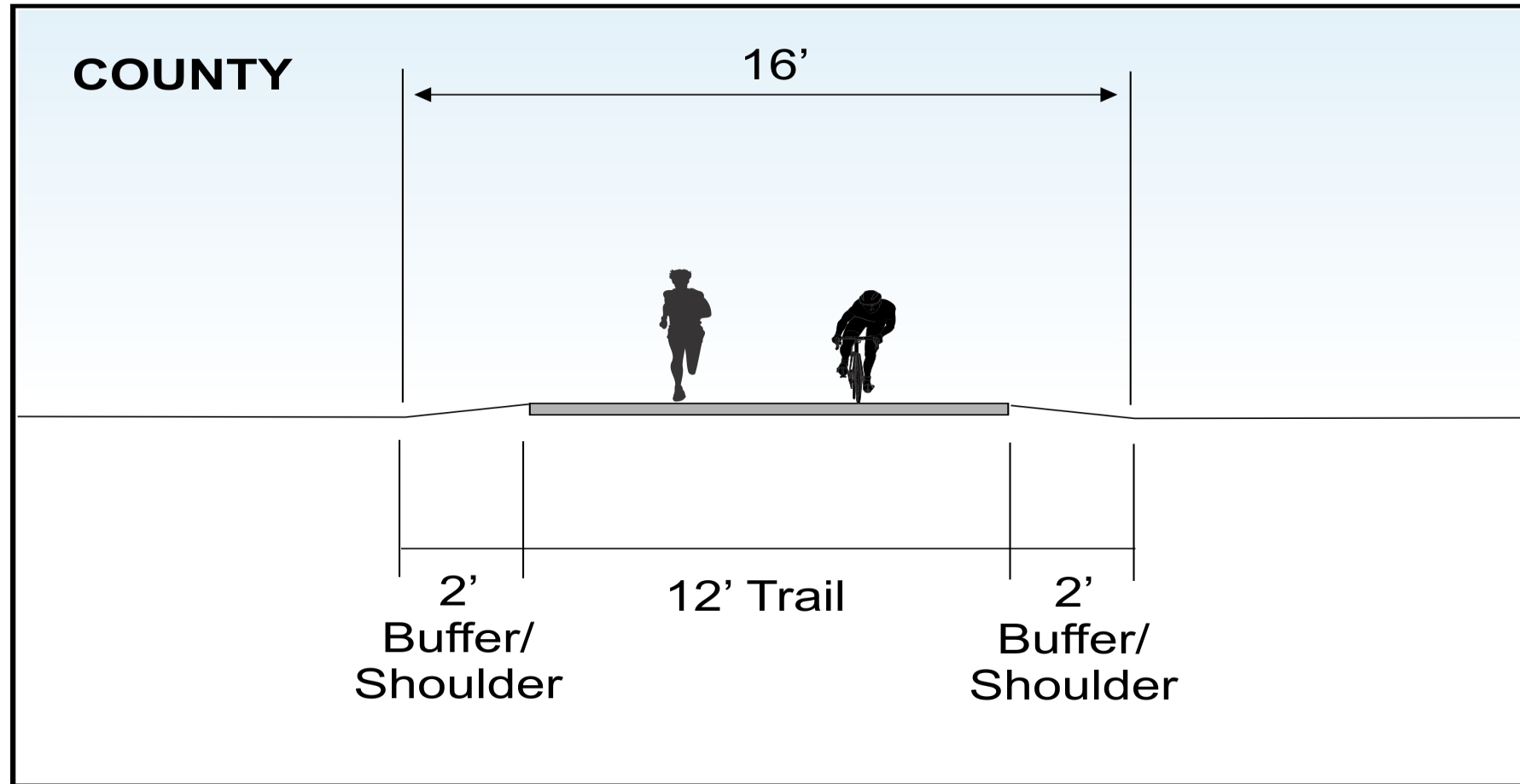


Project Site

- Snohomish County portion of the trail is 2.4 miles.
- North Creek Trail Phase II, 0.78 miles in length, located between Waxen Road and 183rd St. SE
- North Creek Trail Phase I, 1.24 miles in length - **COMPLETED**
- North Creek Trail Phase III, 0.4 miles in length, to be funded in the future as the final connection



Snohomish County



Cross Section

North Creek Trail: Wetland Mitigation and Permitting



- Wetland Mitigation Site – **COMPLETED 2022**
- NEPA & ROW - **COMPLETED**
- Corps Permit Acquired

Financial Plan - North Creek Trail Phase II

- Total Construction Cost (including CN and CE): \$11.51 M
- Funding Request \$ 5.0 M
- Balance to be funded by County dollars
- Anticipated Ad Date: Fall of 2027

Thank You - Questions

