



Emerald Alliance



Implementing the Regional Open Space Plan: An Inventory of Existing Resources



What do we mean by resources?

- What funding programs are being used for easements and acquisitions?
- What tools and programs are being utilized for long term protections?
- What groups are already convening and coordinating?
- What entities are implementing the plan?

Total Conservation Needs				
Farmland (Acres)	Working Forests (Acres)	Aquatic Systems (Acres)	Natural Lands (Acres)	Regional Trails (miles)
104,000	183,200	93,700	81,700	300
463,000 acres				

What funding programs, incentives, and tools are being used?

- Local funding
- State funding
- Federal funding

Secretary Haaland Announces \$150 Million to Create Public Parks, Expand Recreation Opportunities in Urban Areas



5/10/2021

doi.gov/lwcf/news

County Funding

Funding Program	County	Regional Trails	Urban Open	Aquatic Systems	Natural Lands	Farmlands	Working Forests
Conservation Futures Tax	King	X	X	X	X	X	
	Snohomish	X	X		X	X	
	Pierce	X	X	X	X	X	X
	Kitsap				X	X	X
Parks Levy	King	X	X	X	X		
	Snohomish	X	X				
	Pierce	X	X				
	Kitsap	X	X				
Surface Water Management	King			X		X	
	Snohomish			X			
	Pierce			X		X	
	Kitsap			X			
Real Estate Excise Tax	King						
	Snohomish						
	Pierce						
	Kitsap						

Incentive Programs: TDR/PDR, Open Space Taxation



Special Purpose District Funding

Funding & Incentive Programs	County	Regional Trails	Urban Open Space	Aquatic Systems	Natural Lands	Farmlands	Working Forests
Flood Control Zone District	King		X	X	X		
	Snohomish*						
	Pierce		X	X	X		
	Kitsap						
Conservation District	King		X	X		X	X
	Snohomish		X	X		X	
	Pierce			X		X	
	Kitsap			X		X	

*Snohomish County Flood Districts: French Slough Marshland, Robe Valley, Stillaguamish



State Funding

Funding Program	Oversight Agency	Regional Trails	Urban Open Space	Aquatic Systems	Natural Lands	Farmlands	Working Forests
Washington Wildlife and Recreation Program - Farmland	RCO					X	X
Washington Wildlife and Recreation Program - Habitat Conservation Projects	RCO		X	X	X		
Washington Wildlife and Recreation Program - Recreation Projects	RCO	X	X		X		
Aquatic Lands Enhancement Account	RCO/DNR	X		X	X	X	
Community Forest Program	RCO/DNR						X
Land and Water Conservation Fund	RCO	X	X	X	X		
Estuary and Salmon Restoration Program	WDFW			X	X		
Recreational Trails Program	RCO	X					
Rivers and Open Space Habitat program	DNR			X			X
Floodplains by Design	ECY	X		X		X	
Streamflow Restoration Grant Program	ECY			X			X

Salmon Funding Allocations by Watershed

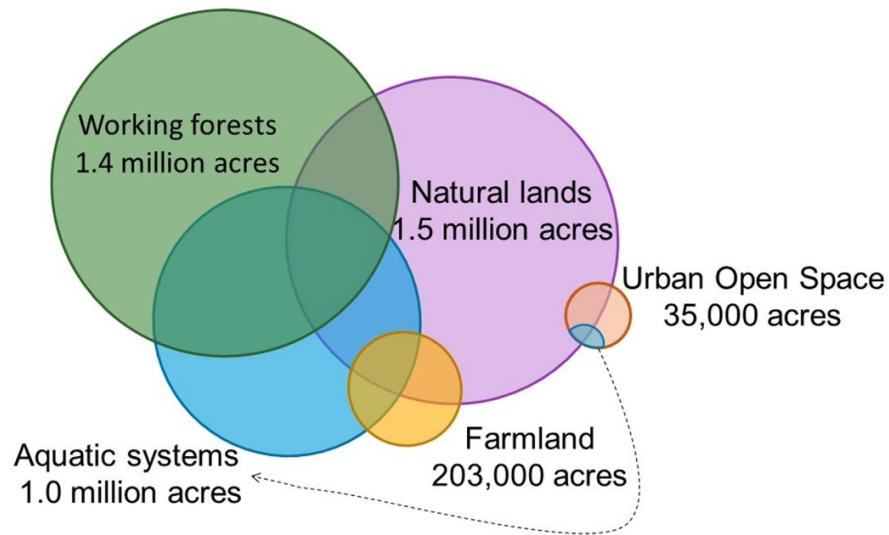
Funding Program	2019-2021 Allocations	Regional Trails	Urban Open Space	Aquatic Systems	Natural Lands	Farmlands	Working Forests
Salmon Recovery Funding Board (SRFB)	\$18,000,000			X	X		
<i>Stillaguamish</i>	\$499,070			X	X		
<i>Snohomish</i>	\$511,397			X	X		
<i>Lk WA/Cedar/Sammamish</i>	\$391,711			X	X		
<i>Green/Duwamish</i>	\$295,895			X	X		
<i>Puyallup-White/Chambers-Clover</i>	\$508,077			X	X		
<i>Nisqually</i>	\$376,749			X	X		
<i>East Kitsap</i>	\$266,339			X	X		
Puget Sound Acquisitions & Restoration Fund	\$50,000,000			X	X		
<i>Stillaguamish</i>	\$1,856,976			X	X		
<i>Snohomish</i>	\$1,902,846			X	X		
<i>Lk WA/Cedar/Sammamish</i>	\$1,457,509			X	X		
<i>Green/Duwamish</i>	\$1,100,987			X	X		
<i>Puyallup-White/Chambers-Clover</i>	\$1,890,232			X	X		
<i>Nisqually</i>	\$1,402,834			X	X		
<i>East Kitsap</i>	\$991,014			X	X		

Federal Funding

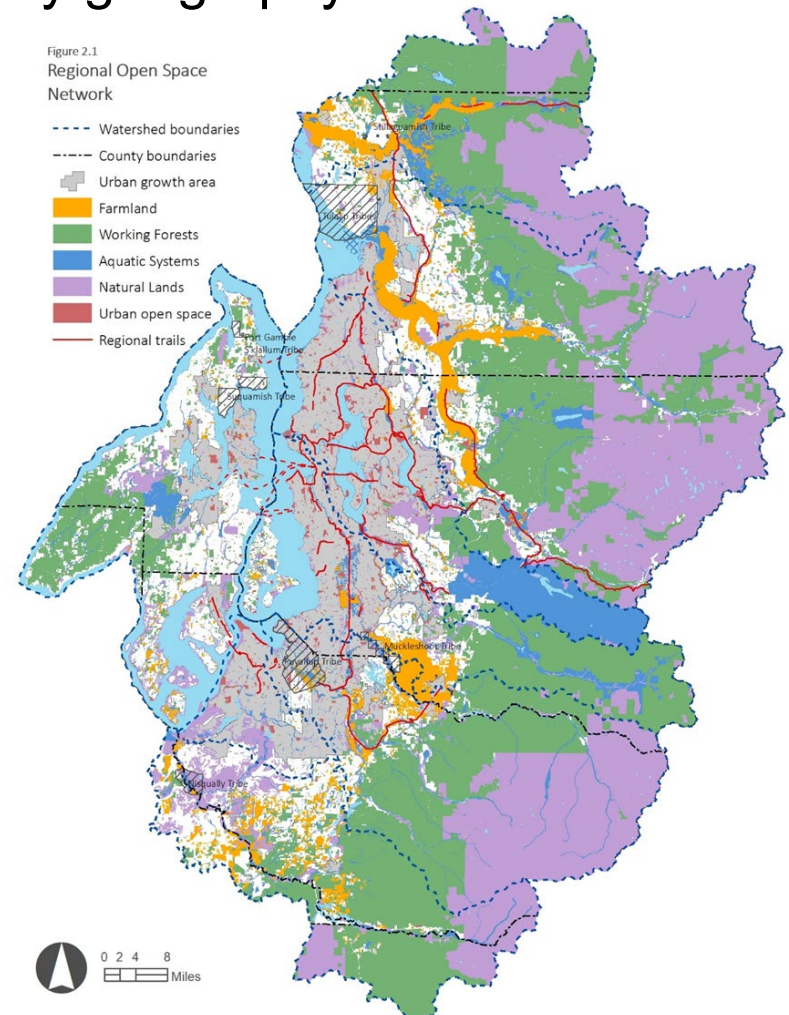
Funding Program	Oversight Agency	Regional Trails	Urban Open Space	Aquatic Systems	Natural Lands	Farmlands	Working Forests
National Estuary Program - Puget Sound	EPA			X			
Cooperative Endangered Species Conservation Fund Grants: Various	USFWS			X	X		
Pacific Marine & Estuarine Fish Habitat Partnership	USFWS			X			
Forest Service Land & Water Conservation Fund	USFS	X		X	X		
Forest Legacy Program	USFS				X		X
Agricultural Conservation Easement Program	NRCS					X	
Regional Conservation Partnerships Program	NRCS					X	
Healthy Forests Reserve Program	NRCS						X
Conservation Reserve Program	FSA			X	X	X	
Emergency Watershed Protection Program	NRCS			X		X	
National Coastal Wetlands Conservation Grants	USFWS/ECY			X			
Readiness & Environmental Protection Integration Program	DOD				X	X	

What groups are already convening and coordinating?

- By open space type



- By geography



Organizations With A Funding Role

Organizations	Regional Trails	Urban Open Space	Aquatic systems	Natural Lands	Farmland	Working forests
Floodplains by Design		X	X		X	
Stillaguamish Watershed Council			X	X		
Snohomish Basin Salmon Recovery Forum			X	X		
Snohomish Local Integrating Organization			X	X		
Snoqualmie Watershed Forum			X	X		
WRIA 8 Salmon Recovery Council			X	X		
WRIA 9 Watershed Ecosystem Forum			X	X		
Puyallup & Chambers Watershed Lead Entity			X	X		
Puyallup River Watershed Council			X	X	X	
West Sound Partners for Ecosystem Recovery		x	X	X	x	x
Hood Canal Coordinating Council			X	X		x
Alliance for a Healthy South Sound			X	X		
Puget Sound Salmon Recovery Council			X	X		
Puget Sound Regional Council	X					
Alliance for Puget Sound Natural Resources					X	
Puyallup Watershed Initiative: Agriculture Community of Interest					X	
King Co Land Conservation Initiative committees	X	X	X	X	X	X
King County Flood Control District			X			
Snohomish County Conservation Future Advisory Board			X	X	X	X
Pierce County Conservation Futures Citizens Advisory Board	X	X	X	X	X	X
Alliance for a Healthy South Sound			X	X		X

Convening Organizations

Organizations	Regional Trails	Urban Open Space	Aquatic systems	Natural Lands	Farmland	Working forests
Floodplains for the Future			X	X	X	
Pierce County Agricultural Advisory Committee					X	
Pierce County Agriculture Roundtable					X	
Puyallup Farmland Strategic Conservation Partnership					X	
Snohomish Farmland Conservation Working Group					X	
Snoqualmie Fish, Farm, Flood			X	X	X	
Sustainable Lands Strategy					X	
Snohomish County Agricultural Advisory Board					X	
Puget Sound Conservation District Caucus - Better Ground		X	X		X	x
Darrington Forest Collaborative						X
Nisqually Community Forest						X
ReGreen the Green			X			
City Habitats		X				
WA Association of Land Trusts		X	X	X	X	X
Puget Sound Climate Preparedness Collaborative		x	x	x	x	x
Leafline Trail Coalition	X					
Emerald Alliance	X	X	X	X	X	X



What individual entities are implementing the plan?

Counties

Tribes

State and Federal land managers

Ports & Utilities

Conservation District

Land Trusts/NGOs





NGOs Implementing the Plan:

IMPLEMENTING ENTITIES	Regional Trails	Urban Open Space*	Aquatic systems	Natural Lands	Farmland	Working forests
Forterra			X	X	X	X
Trust for Public Land		X	X	X		X
The Nature Conservancy		X	X	X	X	X
The Conservation Fund			X	X	X	
Conservation Northwest				X		X
Washington Farmland Trust					X	
Bainbridge Island Land Trust			X	X		
Vashon-Maury Island Land Trust						
Nisqually Land Trust			X	X	X	X
Mountains to Sound Greenway	X		X	X		X
Great Peninsula Conservancy			X	X		X
Center for Natural Lands Management				X		
Hood Canal Salmon Enhancement Group			X	X		



What is this information telling us?

Well-trodden ground:

- Aquatic systems and natural lands are well covered
- Most convening groups work across more than one open space type; integration gets funded
- Many groups are convening about farmland protection in certain geographies

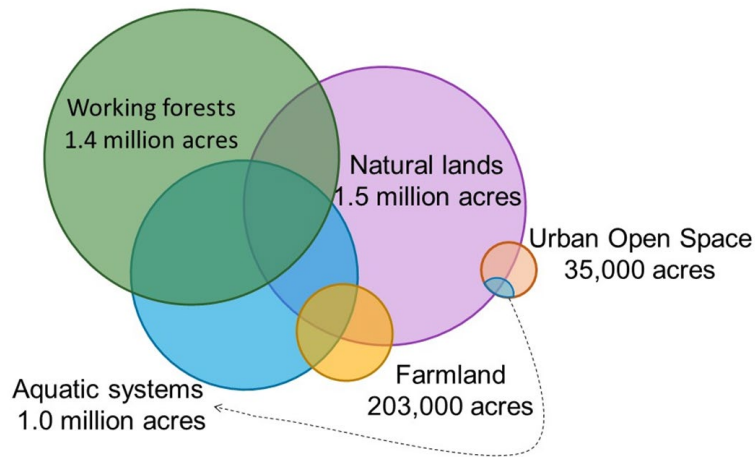
Potential gaps:

- **By Open Space Type**
 - Working Forest
 - Trails?
- **By Geography**
 - Kitsap County
- **By Protection Tool**
 - Are we fully utilizing incentives that keeps land private and protected?

Advancing the work:

- Identifying policy changes where funding programs are misaligned with goals or acquisition is not allowed
- Developing County programs and incentives
- Using similar language, goals, framework
- Testing assumptions and tracking progress

Detailed information can be found at:
<https://www.psrc.org/media/8697> (XLSX)



Farmland (Acres)	Working Forests (Acres)	Aquatic Systems (Acres)	Natural Lands (Acres)	Regional Trails (miles)
104,000	183,200	93,700	81,700	300

