



Regional Transportation Plan Development

Growth Management Policy Board – May 2, 2024



Puget Sound Regional Council



We are leaders in the region to realize equity for all. Diversity, racial equity and inclusion are integrated into how we carry out all our work.

psrc.org/equity

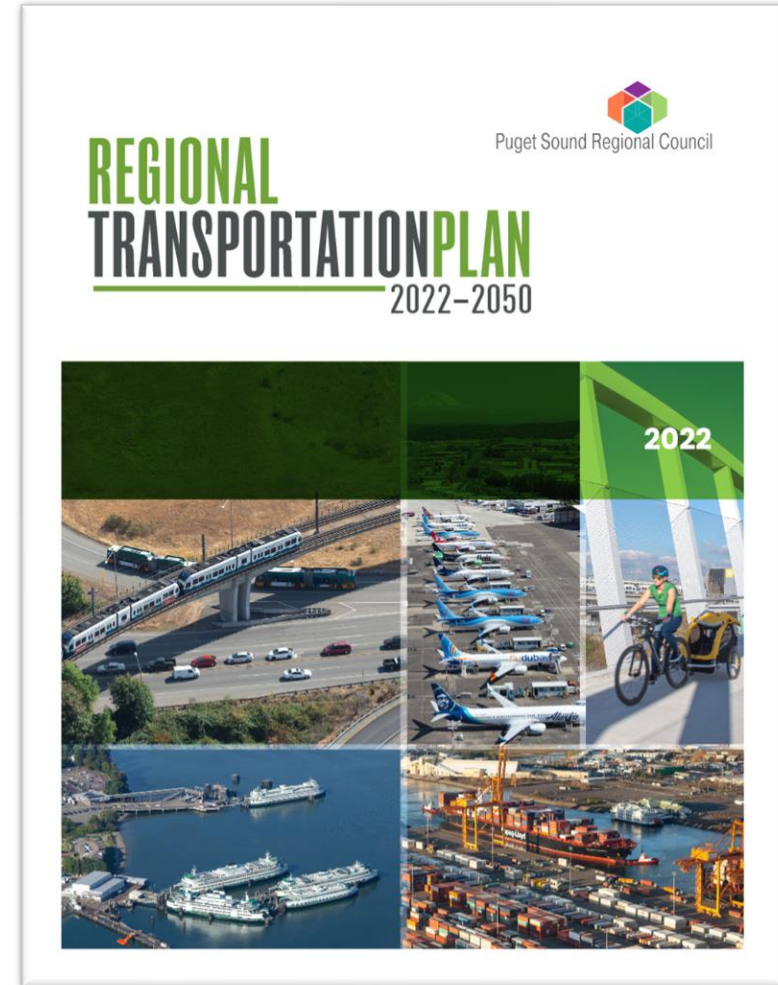
Presentation Overview

- Regional Transportation Plan (RTP) Requirements
- What's in the RTP?
- What's been happening since RTP adoption?
- Transportation Policy Board feedback on priorities
- Preparations/Next Steps for the next RTP (2026–2050)



Regional Transportation Plan: Requirements

- Minimum 20-year planning horizon
- Updated every 4 years
- Integrated multimodal transportation system
- Reasonable financial strategy to fund investments
- Latest available estimates for growth, travel, and economic activity
- Performance measures and targets
- Address federal planning factors



VISION 2050 Implementation



Regional Transportation Plan

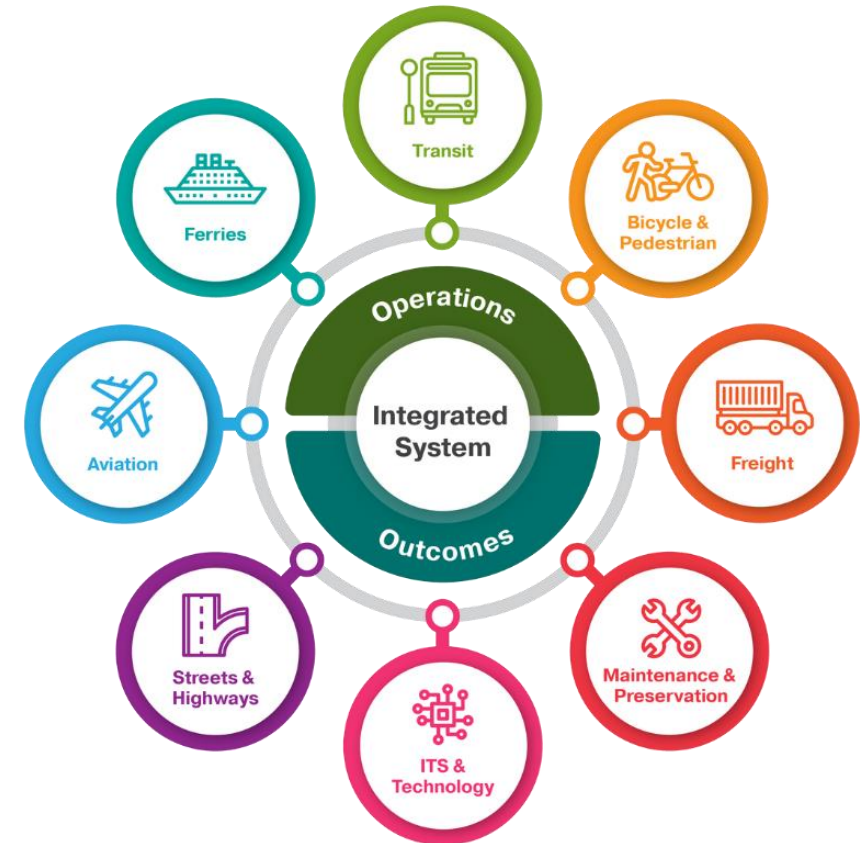
- Builds from VISION 2050
- Objectives:
 - Make progress on existing challenges, address current and future needs of the transportation system
 - Provide better data and analysis to support local investment planning (2024 comprehensive plans)
 - Plan for long-term system investments to accommodate future growth
 - Improve existing system, big picture thinking on future investments (aviation, rail, ferries)



Regional Transportation Plan

2022–2050
REGIONAL TRANSPORTATION PLAN

- Board adopted six key policy focus areas for current RTP:
 - Access to transit
 - Safety
 - Equity
 - Climate
 - Local agency needs
 - Forward thinking/future investments



Informed by Public Engagement



Online Engagement Platform Virtual Outreach Meetings



Personal Interviews



Social Media



Survey

 **Puget Sound Regional Council**
on Thursday



We want to hear from you! Take a survey to help plan the future of transportation in Puget Sound: <https://engage.psrc.org/regional-transportation-plan>



HOW WILL YOU GET AROUND?



ENGAGE.PSRC.ORG
Regional Transportation Plan
PSRC is developing the next Regional Transportation Plan, which will des...



What's in the Plan?

- **\$300 billion of investment over the next 28 years**
 - 56% will maintain, preserve and operate the system
 - 70% of the plan's system improvements are for investments in local and regional transit
 - 84% of the plan funded with forecast current law revenues



36

Bus Rapid Transit
routes



10

Passenger-only Ferry
routes



116

Miles of light rail and
80+ stations



What has been happening since 2022 Plan Adoption?

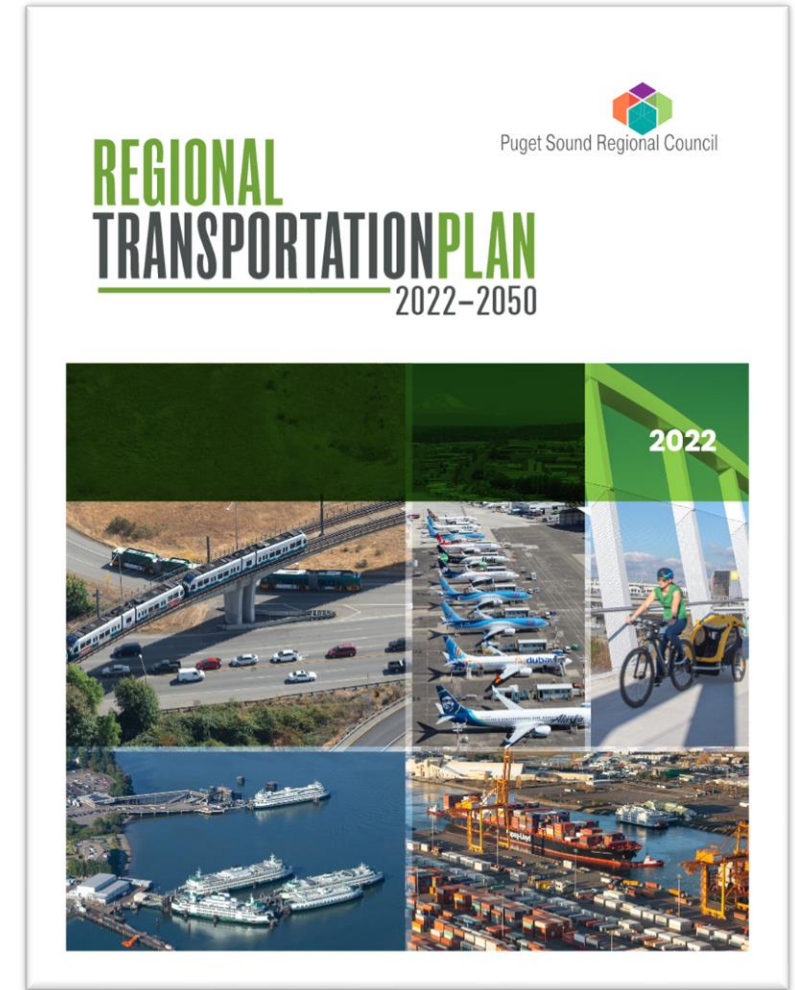
Safety: Regional Safety Summit and developing Regional Safety Action Plan

Equity: FHWA Equity Pilot and FTA Equity Formula Allocation

Climate: 2030 Climate analysis and climate expert review panel. Partnership with Puget Sound Clean Air Agency and others on variety of climate efforts.

Transportation Policy Board Engagement to Date

- February: Project Launch for RTP (2026–2050)
 - Overview of RTP and regional planning requirements
 - Survey of board priorities
- March: Further discussion on board RTP priorities
- April: Deeper dive into current RTP (2022–2050)



Development of the next RTP (2026–2050)

Transportation Policy Board priorities expressed to date



Preparation and Next Steps: RTP (2026–2050)

From February Board Discussion:

- What are some new things you'd like to see?
 - For example, new ideas to analyze, new ideas or investments, new ways to engage with the public, etc.

• Better linkage to land use	• Understanding the reasons for disparities
• Micro-transit	• Electrification
• Financial strategy	• Monitoring and more detailed data
• Changes in travel behavior	• Real-world examples



Preparation and Next Steps: RTP (2026–2050)

2024

Engagement and
Identification of Plan Priorities

2025

Analysis and Draft
Plan Development

2026

Plan Adoption

Ongoing Public Outreach Informs the Plan



Discussion Question

How Can the Regional Transportation Plan (2026–2050) Continue to Support and Implement VISION 2050 and the Regional Growth Strategy?

Thank You!

Kelly McGourty
Director of Transportation Planning
KMcGourty@psrc.org

Gil Cerise
Program Manager
GCerise@psrc.org



Puget Sound Regional Council