

Open Space Trends

June 20, 2024



Puget Sound Regional Council



We are leaders in the region to realize equity for all. Diversity, racial equity and inclusion are integrated into how we carry out all our work.

psrc.org/equity

VISION 2050 Supports Open Space

MPP-En-12: Conserve and enhance open space and update the Regional Open Space Conservation Plan

MPP-En-15: Provide walkable access to parks and trails and prioritize historically underserved communities

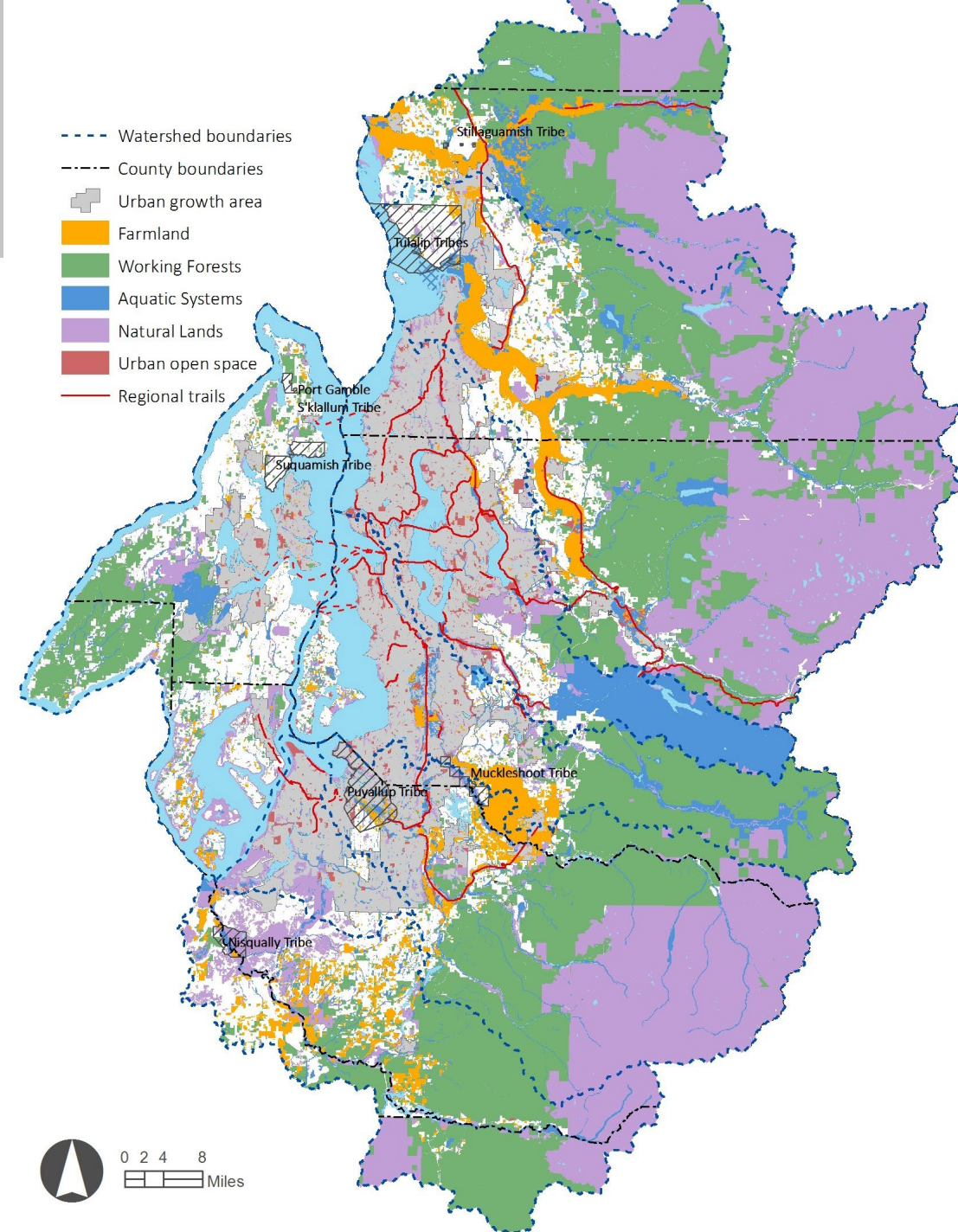


Regional Open Space Network

6 categories of open space:

- Farmland
- Working forests
- Aquatic systems
- Natural lands
- Urban open space
- Regional trails

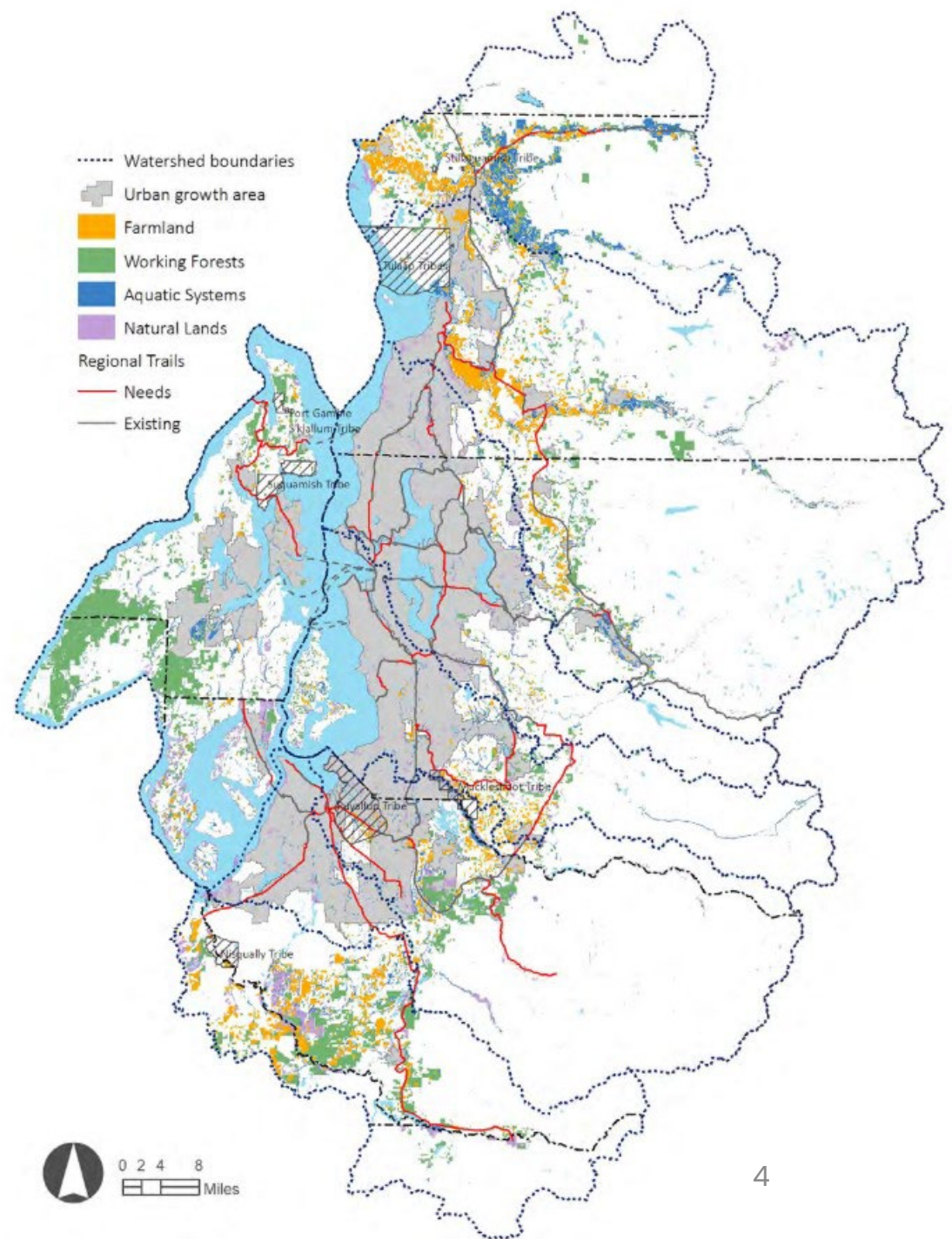
[Regional Open Space Conservation Plan](#)



Conservation Needs

Conservation Needs in the Regional Open Space Network:

- Farmland: 104,000 acres
- Working Forests: 183,200 acres
- Aquatic Systems: 93,700 acres
- Natural Lands: 81,700 acres
- Regional Trails: 300 miles
- Highest priority urban open spaces: 47 parks

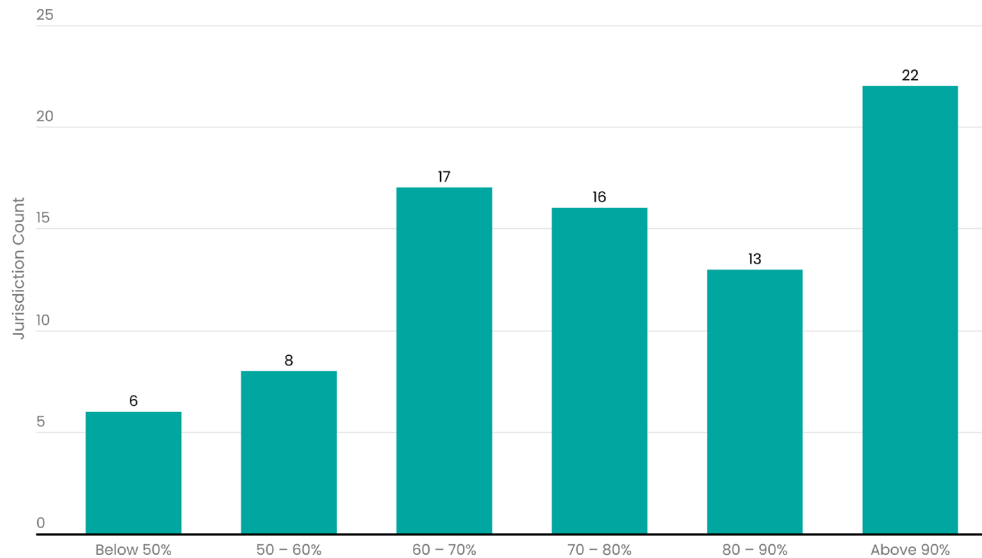


Urban Open Space

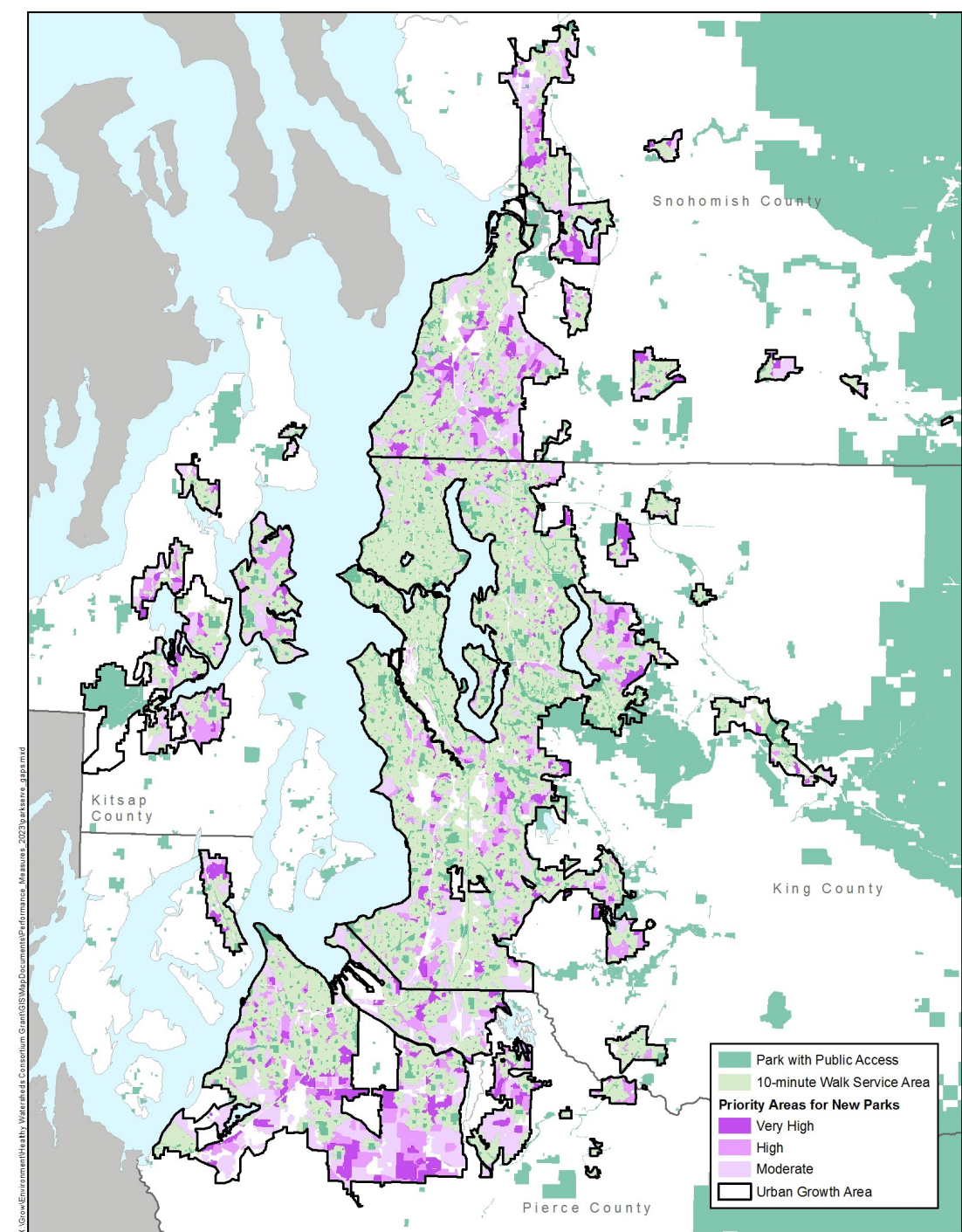
Goal: By 2050, all urban residents within a 10-minute walk of a park.

ParkServe: urban population within a 10-minute walk of a park: 72%

Cities by Percentage of Population Within a 10-Minute Walk of a Park



Data source: ParkServe, Trust for Public Land

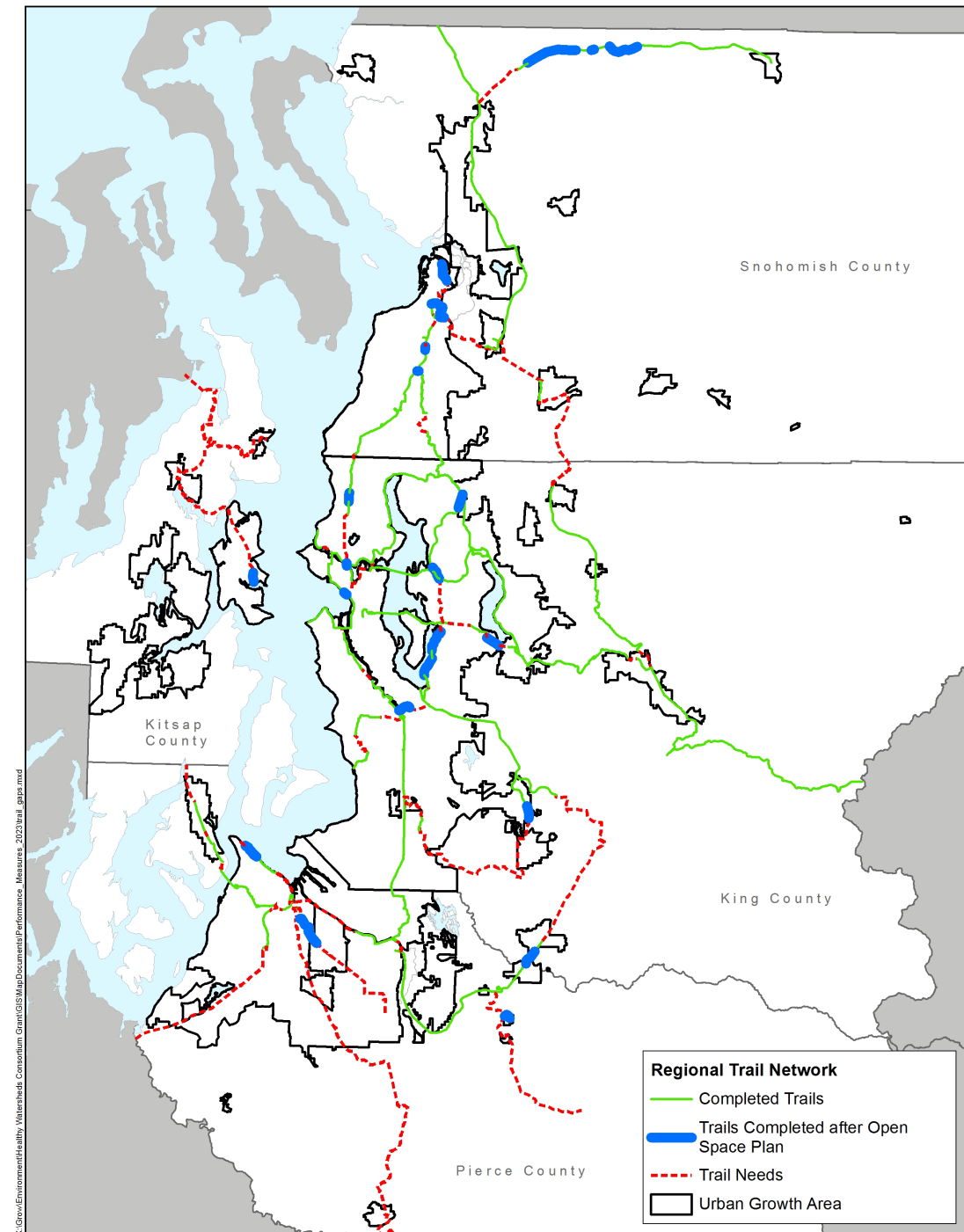


Regional Trails

Goal: By 2050, add 300 miles to the regional trail network

Since 2018, 30 miles added to the regional trail network. Examples:

- Mountains to Sound Greenway Trail in King County
- Sound to Olympics Trail in Kitsap County
- Pipeline Trail in Pierce County
- White Horse Trail in Snohomish County



Farmland, Working Forests, Aquatic Systems, and Natural Lands



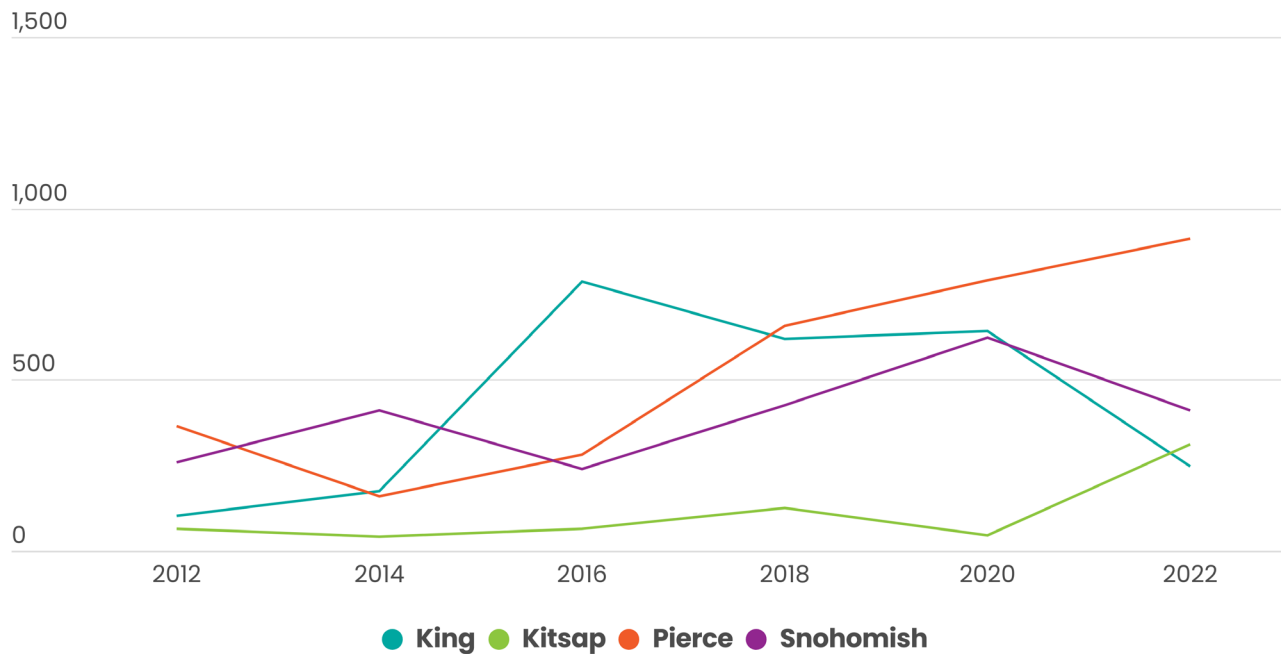
Short term goal: 80,000 more acres of open space in long-term protection by 2025

Conservation easements: 6,240 acres recorded on land in the regional open space network (2017–2023)

| COUNTY | 2017 | 2023 | 2017–2023 |
|-----------|---------|---------|-----------|
| King | 174,300 | 176,440 | 2,140 |
| Kitsap | 2,140 | 3,230 | 1,090 |
| Pierce | 9,160 | 11,670 | 2,510 |
| Snohomish | 12,520 | 13,010 | 490 |
| Region | 198,120 | 204,360 | 6,230 |

Farmland, Working Forests, Aquatic Systems, and Natural Lands

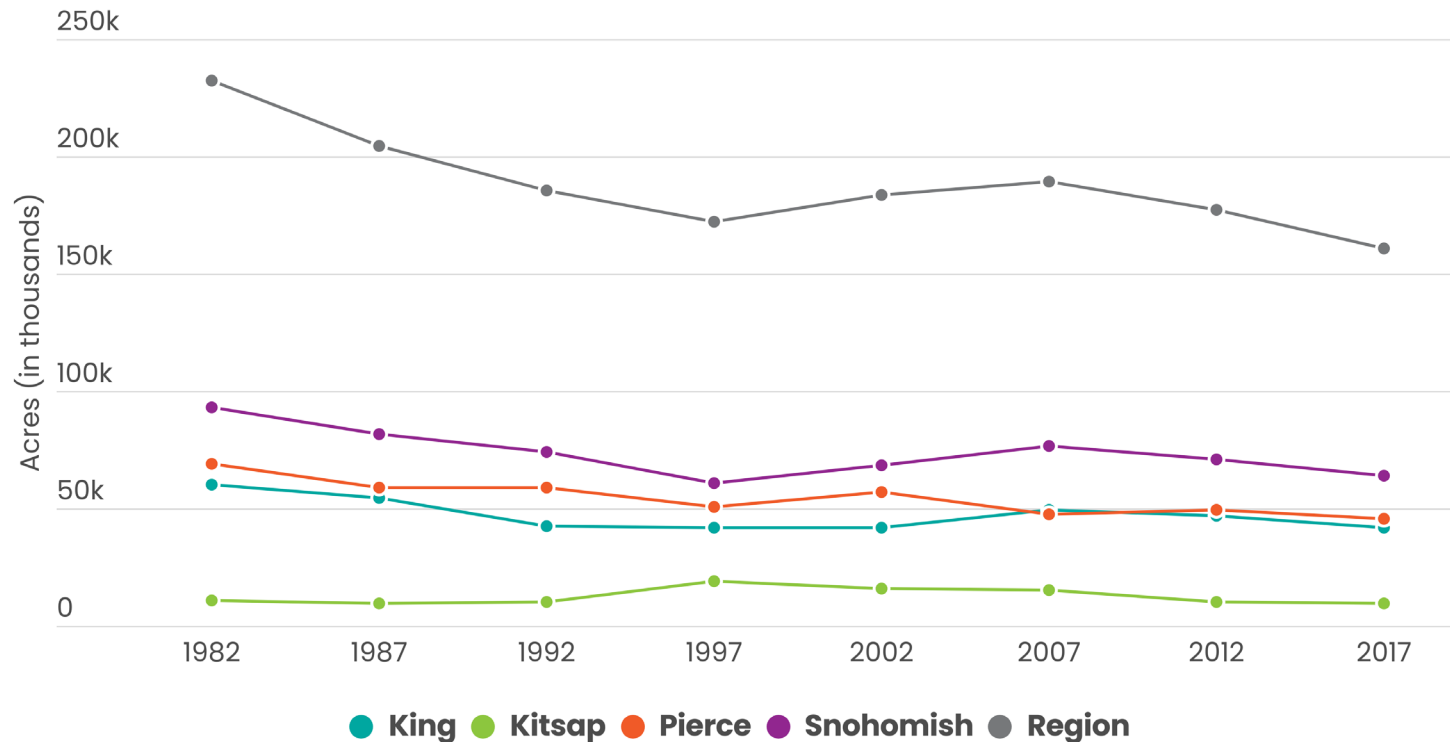
Net new housing units: 16,460 added on lands in the regional open space network (2012–2022). 81% in urban growth areas.



Data source: County Assessment Data, Snohomish County PUD, PSRC



Farmland



Data Source: Census of Agriculture

Census of Agriculture:

Farmland in the region decreased 71,740 acres (1982–2017)

NOAA land cover data:

Farmland on rural and resource lands in the region decreased 290 acres (2010–2016)

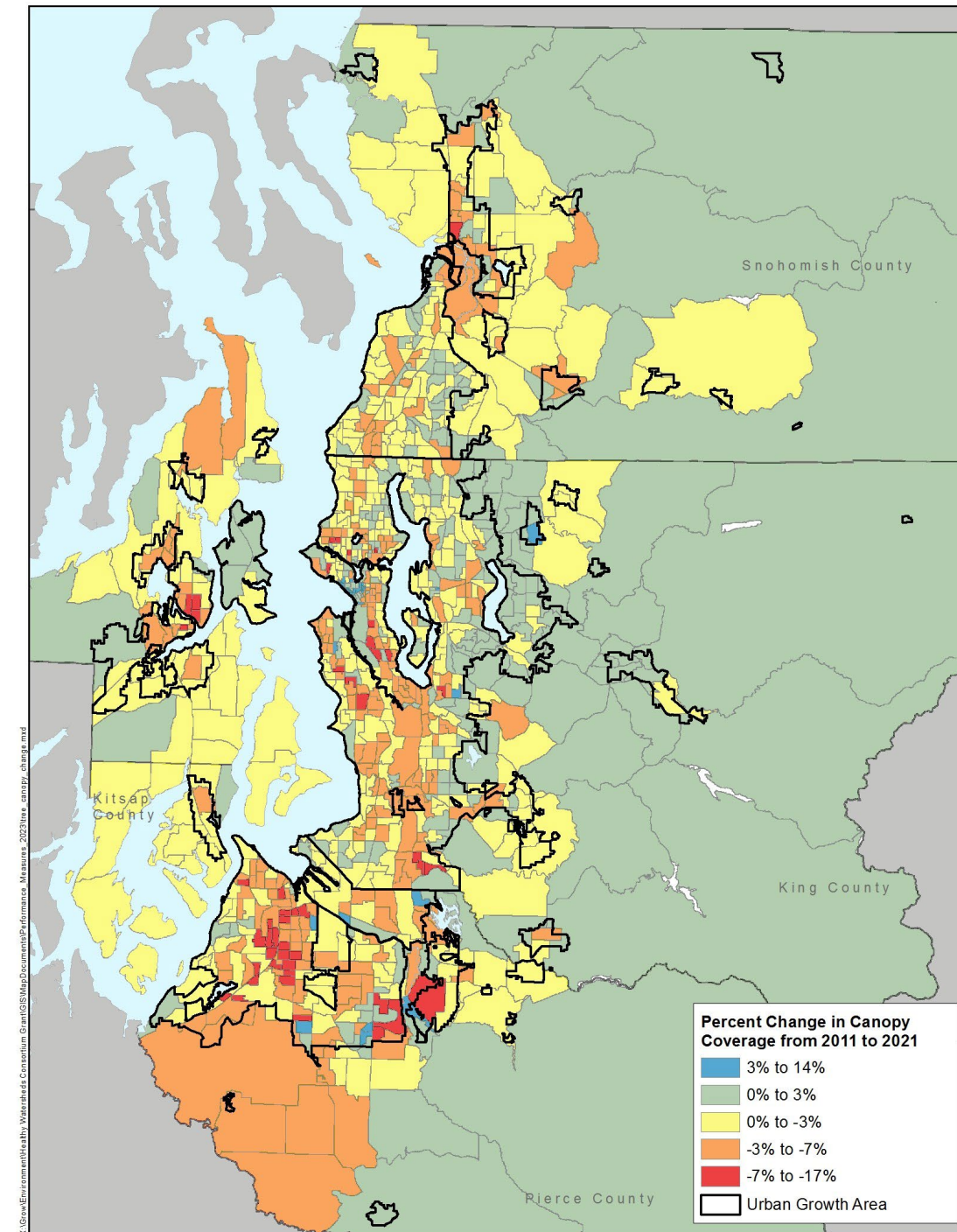


Tree Canopy Cover

Goal: By 2050, tree canopy cover in region remains at 2018 levels. By 2050, it will increase in the regional open space network.

Tree canopy cover change 2011–2021:

- Region: no change (87%)
- Urban: decrease of 3% to 77%
- Regional open space network: no change (74%)



Implementation



Many implementers:

- Cities
- Non-governmental organizations
- Counties
 - King County Land Conservation Initiative
 - Kitsap County Natural Resource Asset Management Program
 - Pierce County Land Conservation Plan
 - Snohomish County Land Conservation Strategy



Conclusions

Progress:

- Urban open space: increasing
- Regional trails: increasing
- Farmland: decreasing
- Working forests, aquatic systems and natural lands: need more information
- Tree canopy cover: holding steady in non-urban areas, decreasing in urban areas

Draft report will be posted at:

<https://www.psrc.org/our-work/open-space-conservation>



Questions



- Do you have any reactions or feedback on the open space information provided?
- What additional information should PSRC review for a more in-depth analysis and update of the Regional Open Space Conservation Plan?
- What are ways that PSRC could support jurisdictions' work to protect and enhance open space?



Thank You!

Erika Harris, AICP

Senior Planner, eharris@psrc.org

Drew Hanson

Senior Planner/GIS Analyst, dhanson@psrc.org



Puget Sound Regional Council