

Freight Advisory Committee



October 9, 2024


Puget Sound Regional Council



We are leaders in the region to realize equity for all. Diversity, racial equity and inclusion are integrated into how we carry out all our work.

psrc.org/equity

Agenda

1. **Welcome and Introductions (9:30) – *Doug Cox, PSRC***
2. **Action: Approval of Meeting Summary for August 14, 2024* (9:35)**
3. **Discussion: Initial 2023 Household Travel Survey findings (9:40) – *Brian Lee, Joanne Lin & Suzanne Childress, PSRC***
PSRC staff will share initial findings from the 2023 Household Travel Survey with an emphasis on delivery trends.
4. **Discussion: RTP Freight Work Program* (10:10) – *Doug Cox, PSRC***
PSRC staff will share the results of the survey on committee focus priorities for development of the 2026 RTP and lead a discussion on developing a committee work plan for advancing these topics through 2025.
5. **Discussion: Other Business and Announcements (10:45)**
6. **Next Meeting: December 11, 2024**
7. **Adjourn (11:00)**



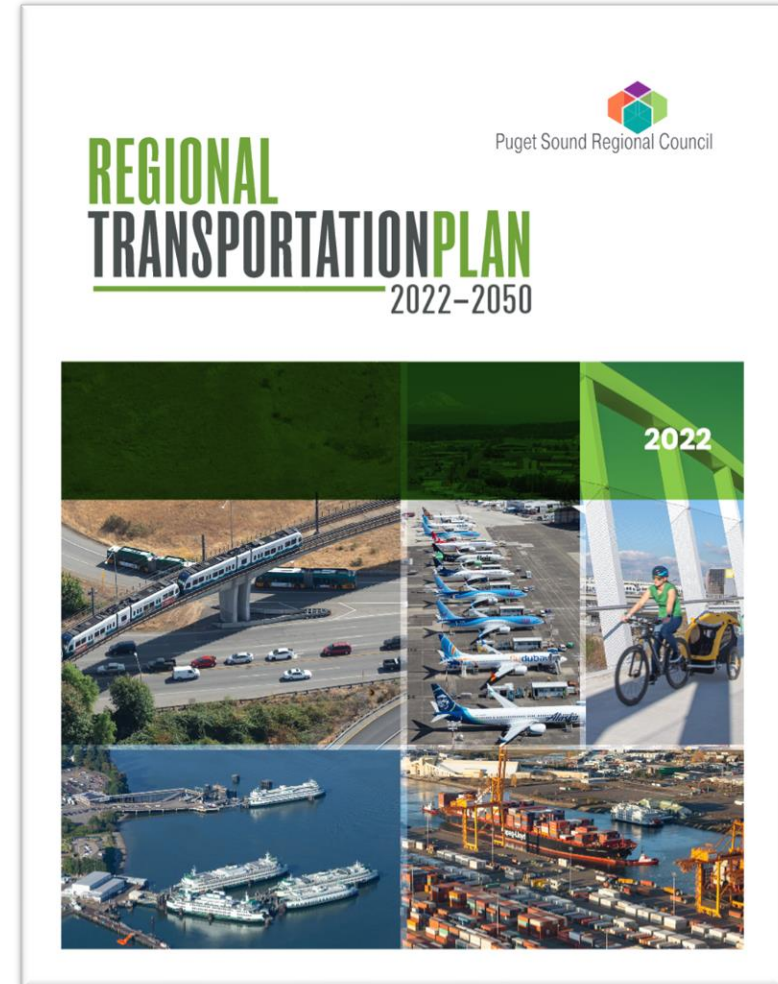
2026 RTP Development Timeframe



Ongoing Public Outreach Informs the Plan

Regional Transportation Plan (RTP) Requirements

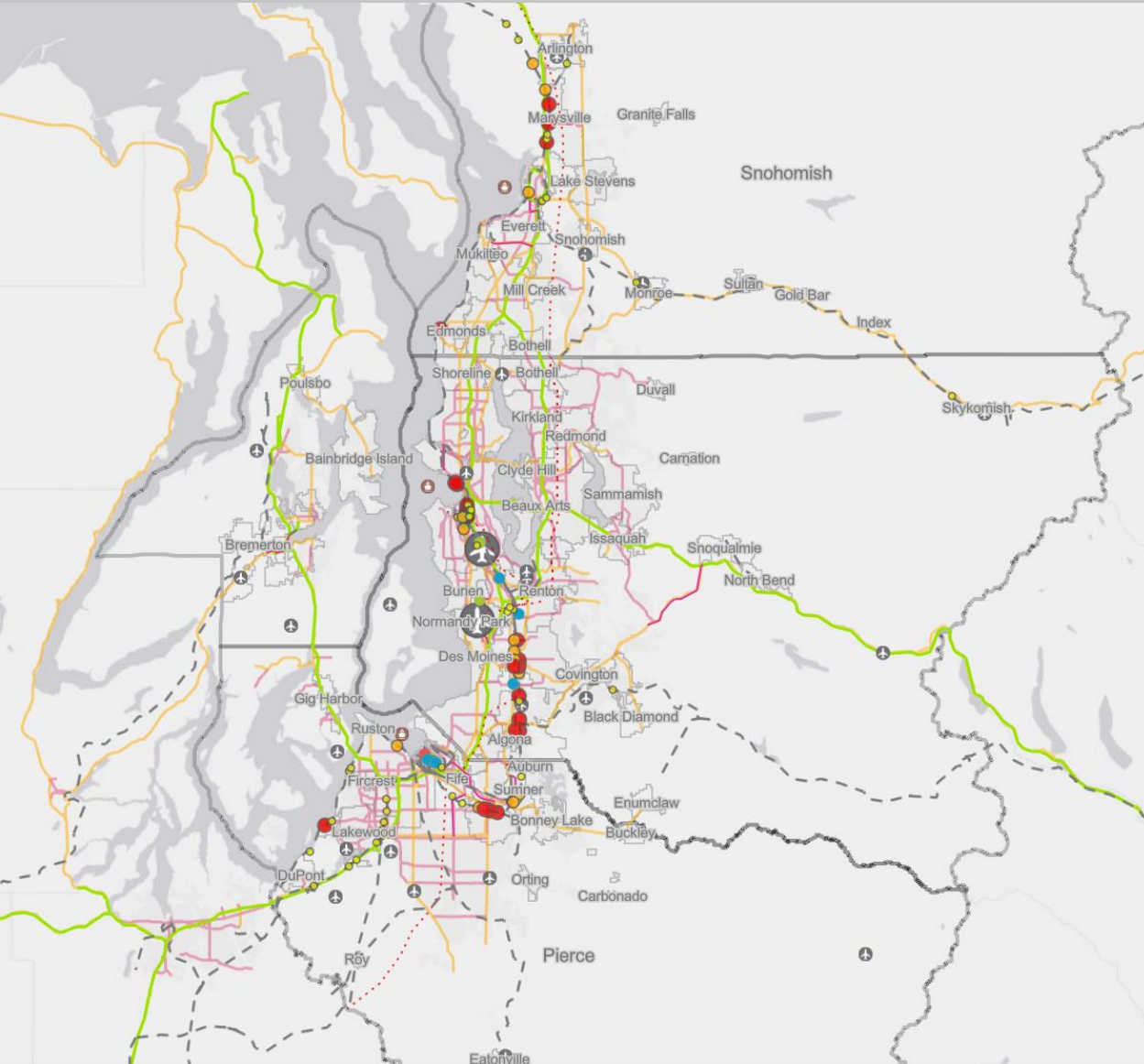
- Minimum 20-year planning horizon
- Updated every 4 years
- Integrated multimodal transportation system
- Reasonable financial strategy to fund investments
- Latest available estimates for growth, travel, and economic activity
- Performance measures and targets
- Address federal planning factors



2022 RTP – Select Freight Themes

- Overview of existing conditions and freight assets in the region
- At-grade crossing issues
- Truck data – VMT, volumes, delay, concentrations
- Truck issues – need for partnerships, M&P, truck parking
- Forecast projections – truck VMT, volumes, delay
- Future considerations – modal conflicts, M&P, truck parking, deliveries
- Equity considerations – Air Quality, noise impacts
- Recommendations for local jurisdictions e.g. factoring freight needs into roadway design + development regulations, context-specific strategies
- See the [2022 RTP](#) Freight sections on pp. 75–85 + [Appendix A](#) pp. 31–37

Current Freight Assets Inventory



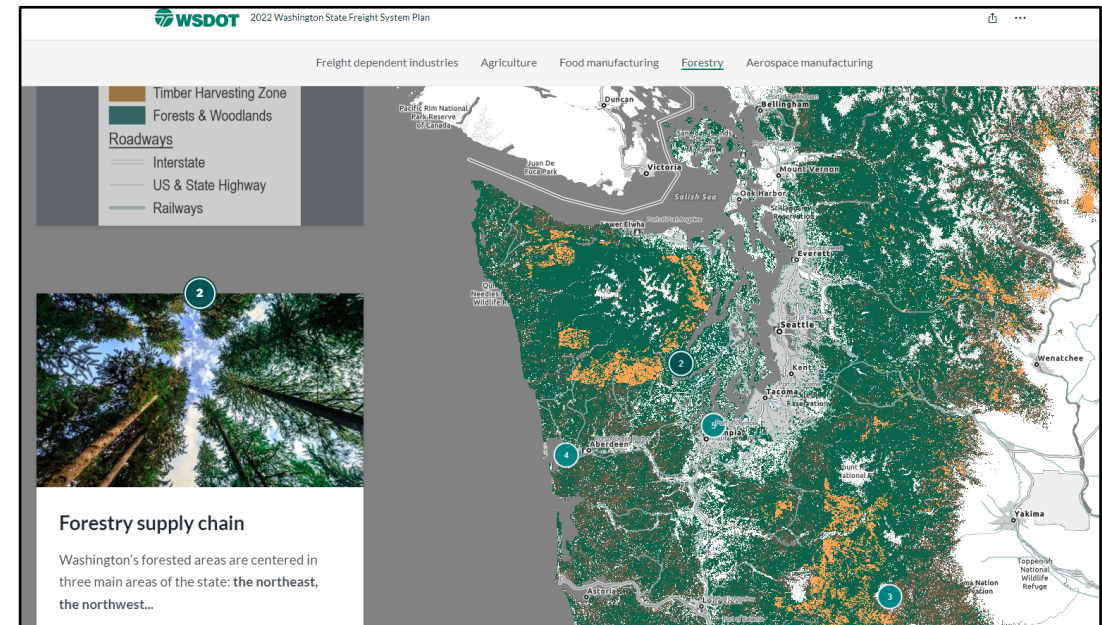
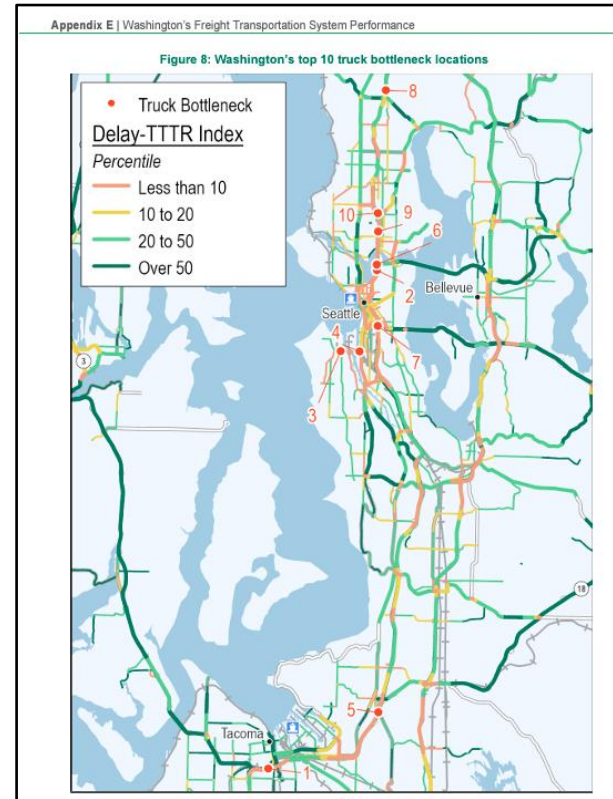
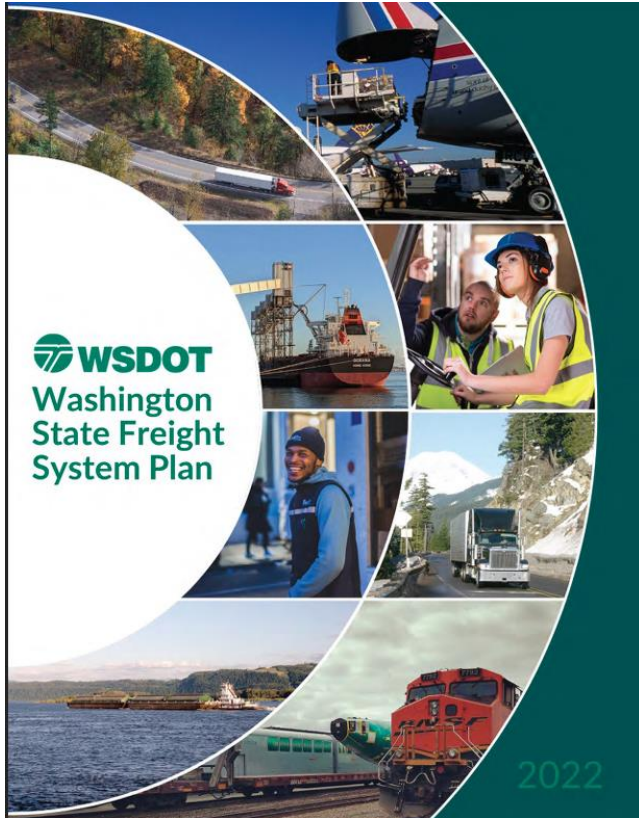
- Freight & Goods Transportation System (FGTS)
- Railways & At-Grade Crossings
- Marine Ports & Airports
- Intermodal Facilities
- National Highway Freight Network & Strategic Highway Network
- Olympic Pipeline
- See the [PSRC Viz tool](#) for more



2022 RTP – Key Freight Messages

- Freight is an integral part of the region's multimodal transportation system
- Accommodating freight traffic should be explicitly addressed in transportation planning and programming, including land use policy, development regulations, and roadway design and pavement standards
- Context matters, and potential strategies and projects to address freight issues are different depending on the setting
- Local jurisdictions should actively engage to help address truck parking issues
- PSRC will continue to lead and participate in forums that foster regional and statewide cooperation on freight

Washington State Freight System Plan



- See the [WSDOT Freight System Plan](#)



2026 RTP Priorities Survey - Results

<i>experience / insight level</i>			Topic	<i>priority level</i>			
Lot/ Some	No, but	Low Priority		Very high	Somewhat high	Medium	Low
8	5	0	Maintenance & preservation	9	3	1	0
8	4	1	corridors of unique freight importance	9	1	3	0
7	5	1	Freight movement from a supply chain perspective	4	2	7	0
7	4	2	Safety	2	6	3	2
6	4	3	Truck parking	2	5	3	3
4	7	2	Freight trends analysis	2	9	1	1
3	5	5	Port electrification	1	2	4	6
3	5	5	Truck electrification	1	2	3	7
2	7	4	incorporating employment into equity policies	0	2	6	5

