

Regional Safety Action Plan

Transportation Policy Board

October 10, 2024



Puget Sound Regional Council



We are leaders in the region to realize equity for all. Diversity, racial equity and inclusion are integrated into how we carry out all our work.

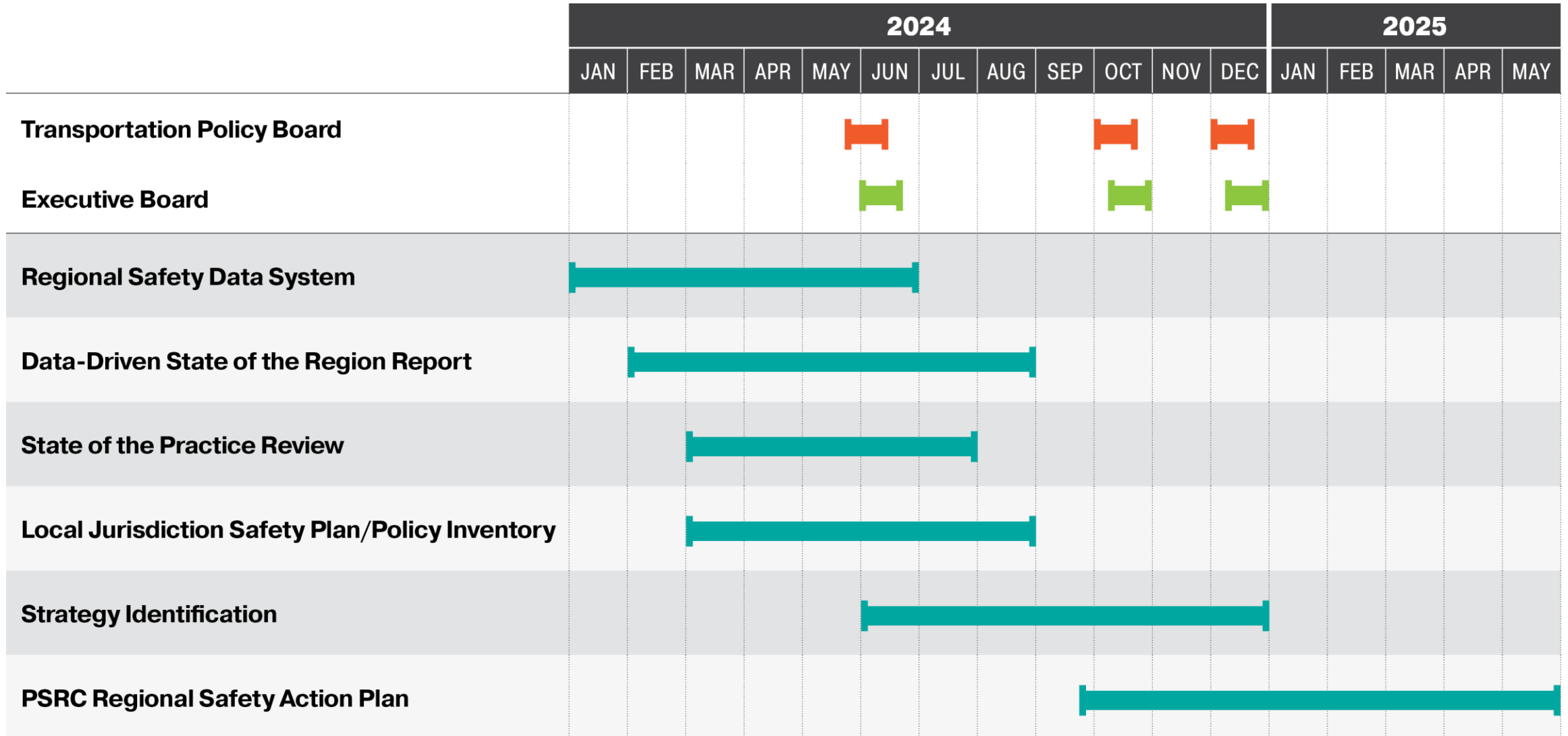
psrc.org/equity

Background

- Development of the Regional Safety Action Plan (RSAP) is underway
- In June, TPB was briefed on the data analysis and state of the practice work
- Today's presentation will focus on:
 - Key findings and emphasis areas derived from the analysis
 - Preliminary menu of strategies and tools developed for the plan
 - Summary of feedback from engagement process



Schedule for Development of Plan



Key Findings from Data Analysis

- 1** Deaths on the region's roadways have **nearly doubled** in the last decade. This is the wrong direction, and unacceptable.
- 2** **Bicyclists and pedestrians** represent **nearly half of the increase** in deaths, **with pedestrians representing the vast majority**.
- 3** Crashes are happening everywhere – in all parts of the region, but **there are as many deaths in rural areas as in the biggest cities**.
- 4** Communities with **lower income residents have 37% higher** rates of serious injuries and deaths than higher income areas. Communities with **majority people of color have 32% higher rates** of serious injuries and deaths than the region as a whole.
- 5** Deaths and serious injuries are **70% higher in areas with a majority of both people of color and lower incomes** compared to the regional average.



Key Findings from Data Analysis

- 6 **Native American and Alaskan Native** community members are **seven times more likely to die** in crashes than white residents.
- 7 Mapping crashes shows **the most frequent** fatalities and serious injuries occur **on major arterials with higher posted speeds**.
- 8 The vast majority of crashes involve cars and light trucks. However, those involving **motorcyclists have a one in four risk of death or serious injury**, five times that of cars or trucks.
- 9 In crashes involving **light trucks and SUVs, pedestrian and bicyclist deaths are 43% higher** than crashes involving passenger cars.
- 10 The most frequent contributing factors resulting in deaths and serious injuries involve **speeding, impairment, distraction, and failures to yield**. Crashes may include multiple factors.

PSRC RSAP Public Involvement Calendar

**Community Events
& Interviews**

July 2024 – Sep 2024

**Online Engagement
Hub**

Sep 2024 – Spring 2025

**Regional Public
Meetings**

Sept 18 – Oct 1

Focus Groups

Late 2024

Internal Briefings

Through 2024

**Public Comment
Process**

January 2025

**Public Opinion
Survey**

Spring 2025



What We've Heard So Far

Regional Public Meetings

- Talked with over 100 different people in all four counties

Online Engagement HUB

- More than 1,250 individual responses to a questionnaire concerning safety



Puget Sound Regional Council

REGIONAL SAFETY
ACTION PLAN PUBLIC MEETING

**Pierce County
Regional Safety
Meeting**

**September 24, 2024
5:00-7:30 p.m.**
Tacoma Art Museum



What We've Heard So Far



Safety is a big concern

- Residents across our region have seen an uptick in collisions on our roadways

Vulnerable users are top of mind

- Pedestrians, cyclists, and individuals with mobility concerns are particularly at-risk as safety trends moves in the wrong direction

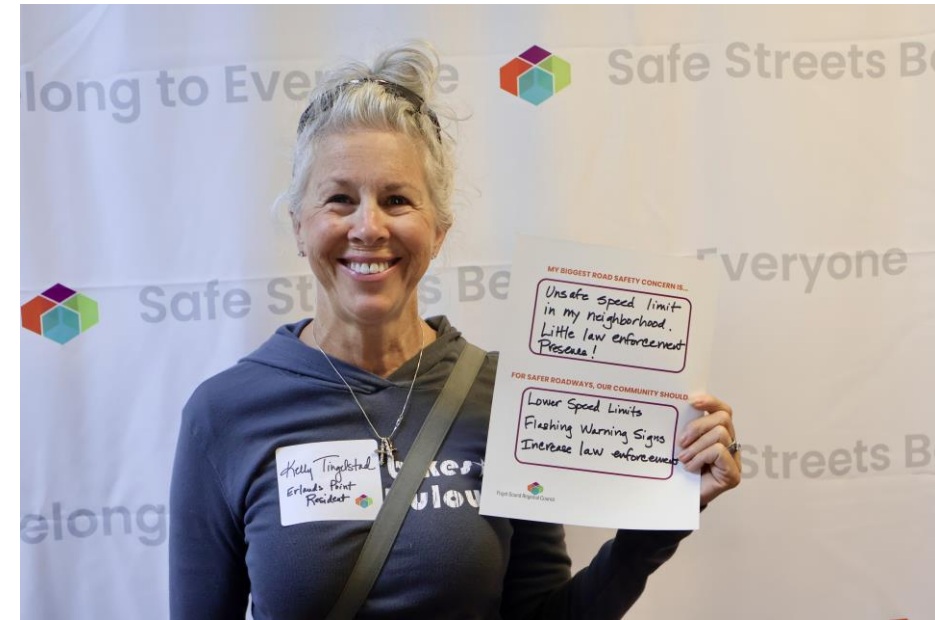
What We've Heard So Far

Safety trends are concerning, but unsurprising

- Community members were troubled by the sharp increase in deaths and serious injuries over recent years, but these data points reflect their lived experience

Driver behavior is worrying

- Respondents often cited aggressive and distracted driving as their primary safety concern



What We've Heard So Far



Data sharing is key to driving solutions

- Staff from local agencies were eager to dive deeper into data and key findings from the State of the Region Report

Funding is a challenge

- Planners and traffic engineers are concerned about funding to implement safety improvements

Links to Engagement Hub, Report, and HIN

Engagement Hub – <https://psrc-rsap.infocommunity.org/>

State of the Region Report – <https://psrc-rsap.infocommunity.org/wp-content/uploads/psrc-state-of-the-region-report-2024.pdf>

High-Injury Network (HIN):
https://www.psrc.org/depts/data/website_data/hin-map/hin_map_dashboard.html

Strategy development

- Strategies developed based on the Safe System Approach
- Strategies include a menu of options for jurisdictions to apply depending on local context



Emphasis areas

Urban, Multilane Arterials

Rural Highways

Tribal Areas

High-Capacity Transit
Stations

Areas of Lower Income

Swift BRT High-Capacity
Transit Station



Crash types

For each emphasis area, the **most common crash types resulting in fatal and serious injury crashes** were identified.

The most common crash types for the identified emphasis areas include:

- Pedestrian
- Bicyclist
- Road departure
- Intersection
- Lane departure



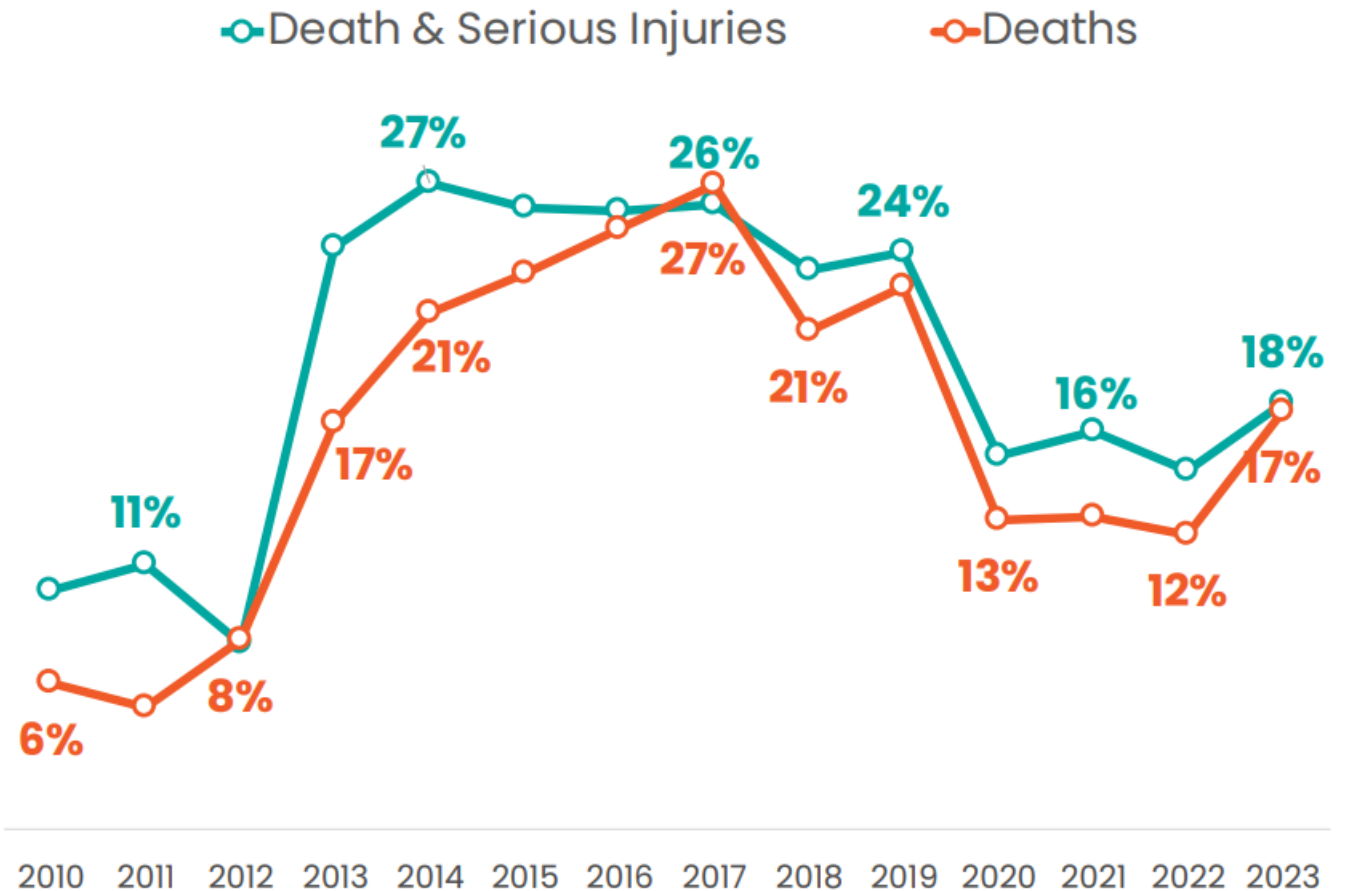
Contributing factors

Contributing factors are based on human decisions.

The predominant contributing factors in the region are:

- Speeding
- Impairment
- Distraction
- Failure to yield

Figure 20. Severe Crash Outcomes involving Distracted Drivers as a Percentage of All Crash Types



Source: State of the Region Report



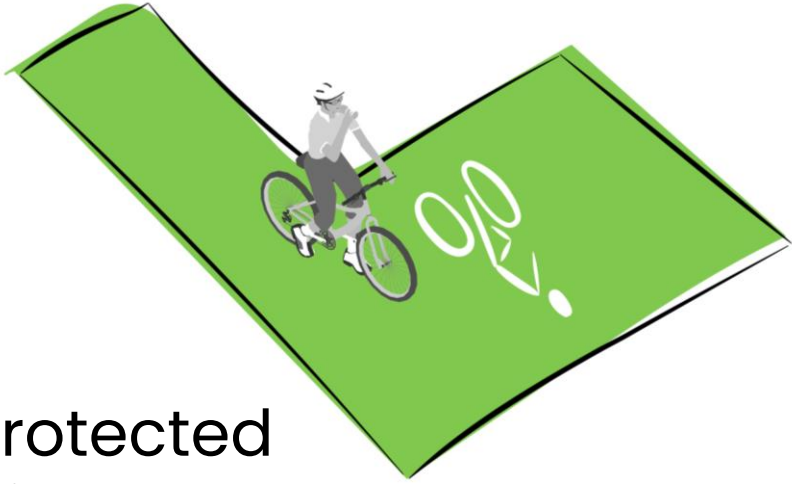
Strategies

Which crash types are most associated with each emphasis area?

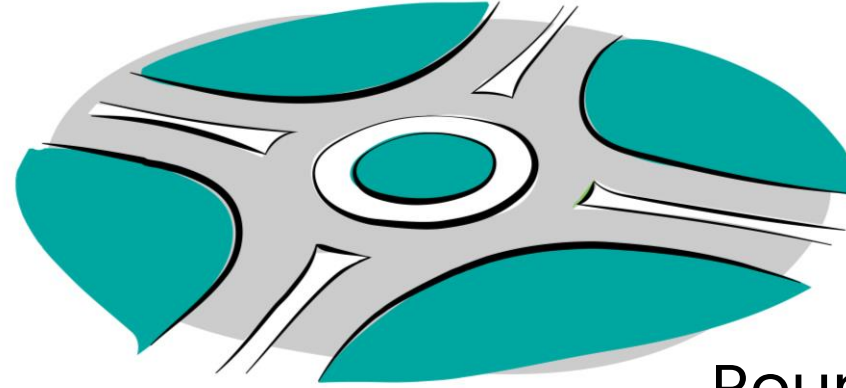
Emphasis Areas	Pedestrian	Bicyclist	Road Departure	Intersection	Lane Departure
Urban, Multilane Arterials	●	●	●	●	
Rural Highways	●		●	●	●
Tribal Areas	●	●	●	●	
High-Capacity Transit Stations	●	●	●		
Areas of Lower Income	●	●	●	●	



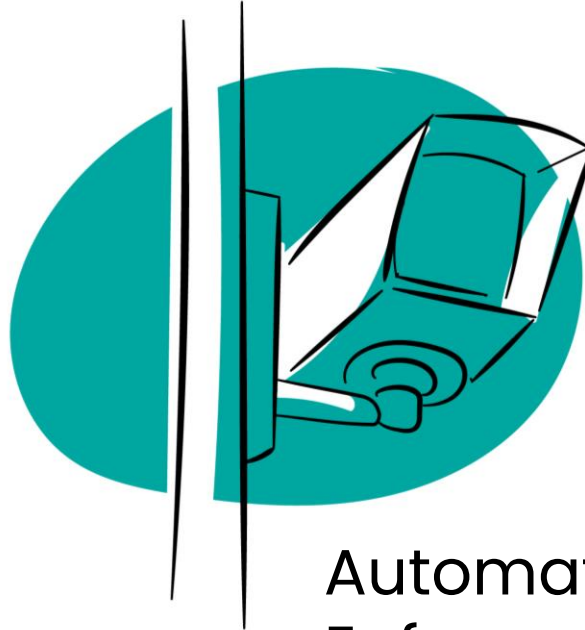
Proven safety strategies - examples



Protected
bike lanes
and bike
boxes



Roundabouts



Automated Traffic
Enforcement



Low cost,
high
effectiveness

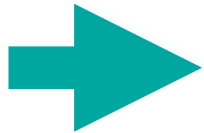
Strategy Example

Design / Engineering Strategies

and

Planning, Policy and Program Strategies

Pedestrian Safety



High Visibility Crosswalks



Leading Pedestrian Interval
(LPI)

Safer Lighting

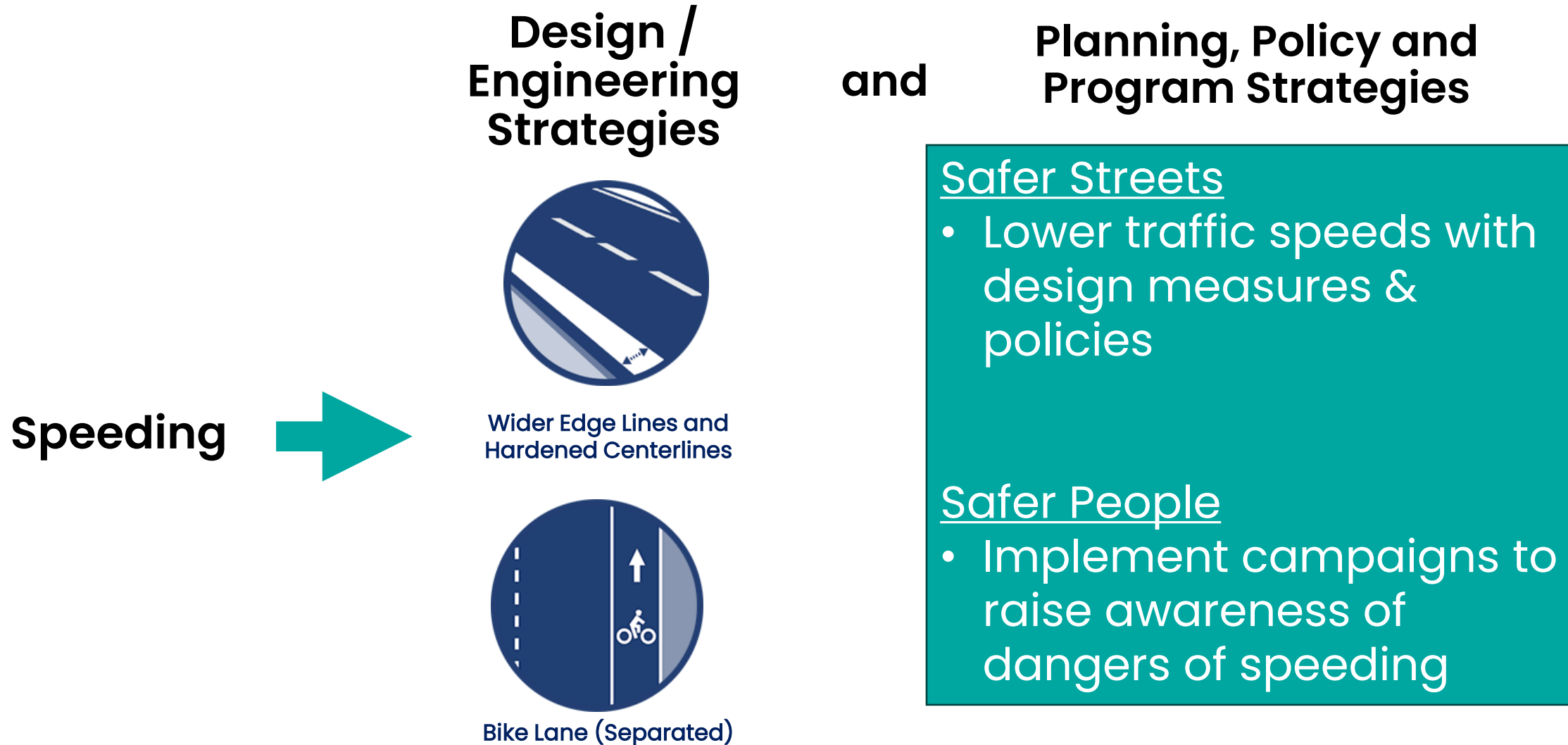
- Identify locations where lighting can improve road safety at intersections

Safer Connections

- Implement systemic countermeasures to lower vehicle speeds and establish safe, connected pedestrian networks



Strategy Example



A large orange circle on the left side of the slide.

Discussion

- Do the summary findings and emphasis areas align with what you're hearing from your communities?
- Does the toolbox approach make sense?
- Any other thoughts or feedback on what you've heard today?

