

PierceTransit **«RUNNER»**

**Project: Sustaining
Spanaway's Transit Connector**

**WSDOT 25-27
Consolidated Grant
Application
Presentation to
PSRC**

Presenters:

**Sarah Streiffert
Senior Planner**

**Tina Lee
Planning Manager**

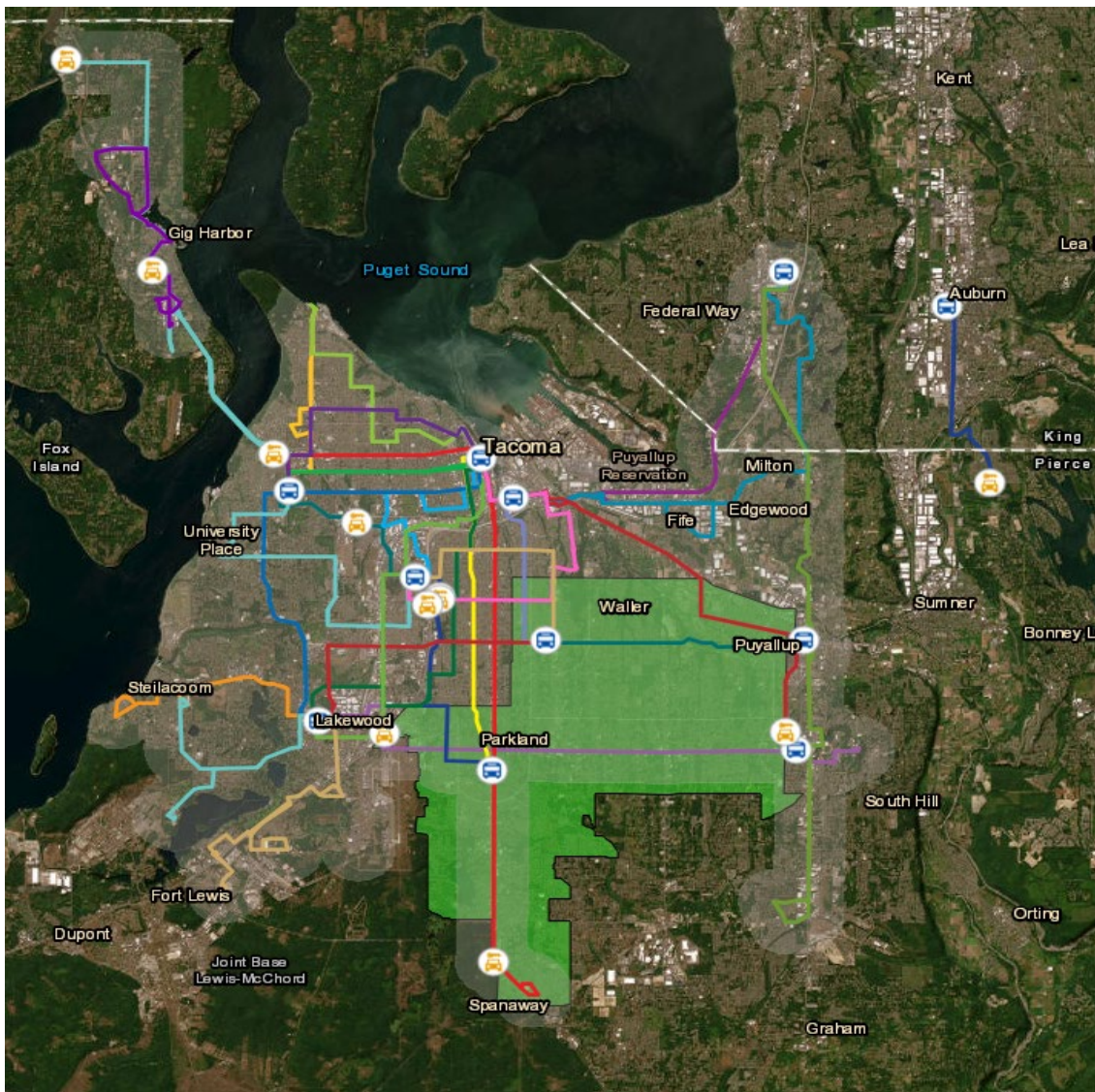


Project Description

Runner is a flexible and affordable micro transit service in the Parkland-Spanaway-Midland area. It is a real time transit solution for special needs populations such as the youth, seniors aged 65 and older, people with disabilities, and families with low incomes.

Service Area (Marked in Green): 46.4 sq mi.

Population: 137,900 people

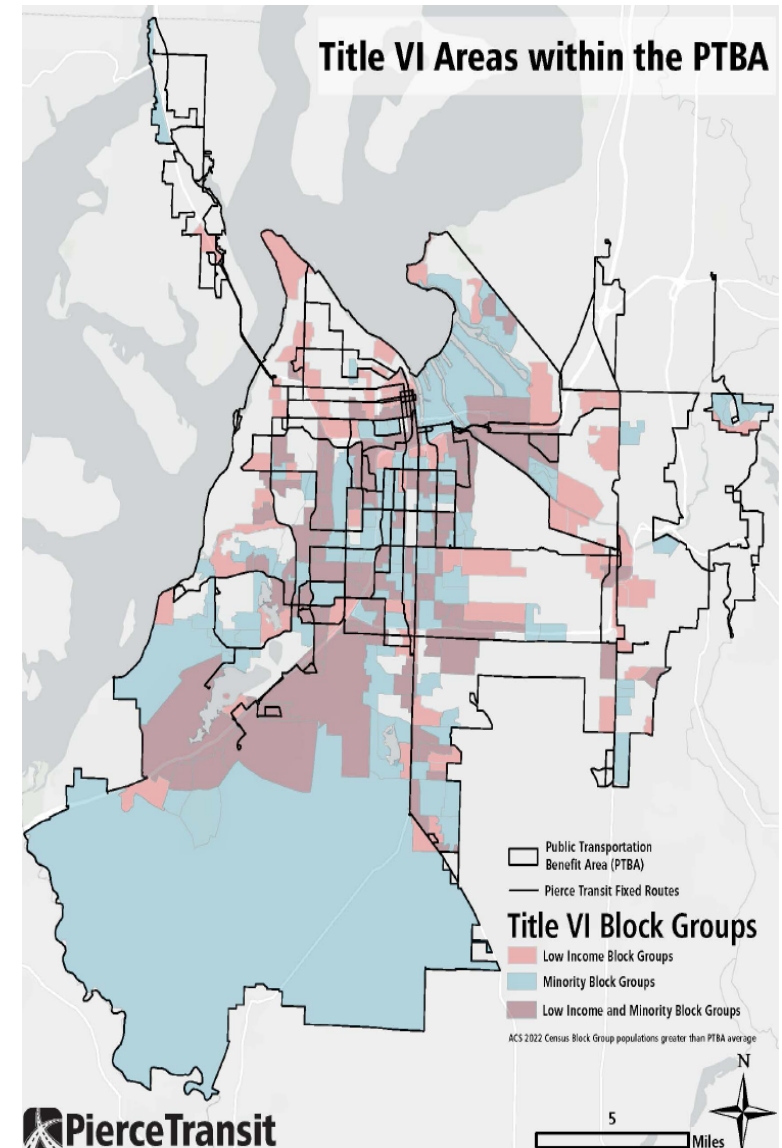


Special Needs Populations to be served

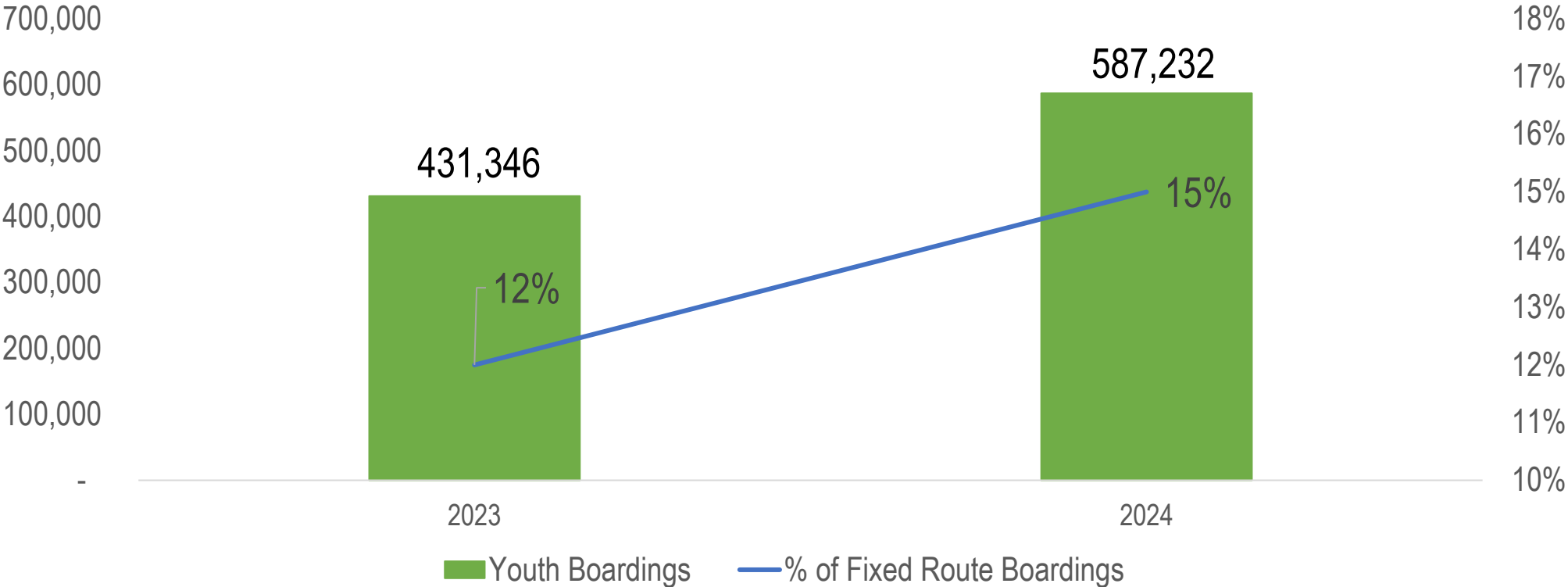
- 1. Youth**
- 2. Adults aged 65 and older**
- 3. People with disabilities**
- 4. Families with low incomes**

Spanaway Runner Statistics

- Approximately 24% of the population in the zone are youth.
- Approximately 13% of the population in the zone are seniors aged 65 and over.
- Approximately 15% of the population in the zone are people living with disabilities.
- Approximately 12% of the population in the zone are people living in poverty.



Youth Boardings | 2023 vs. 2024 (January – July)

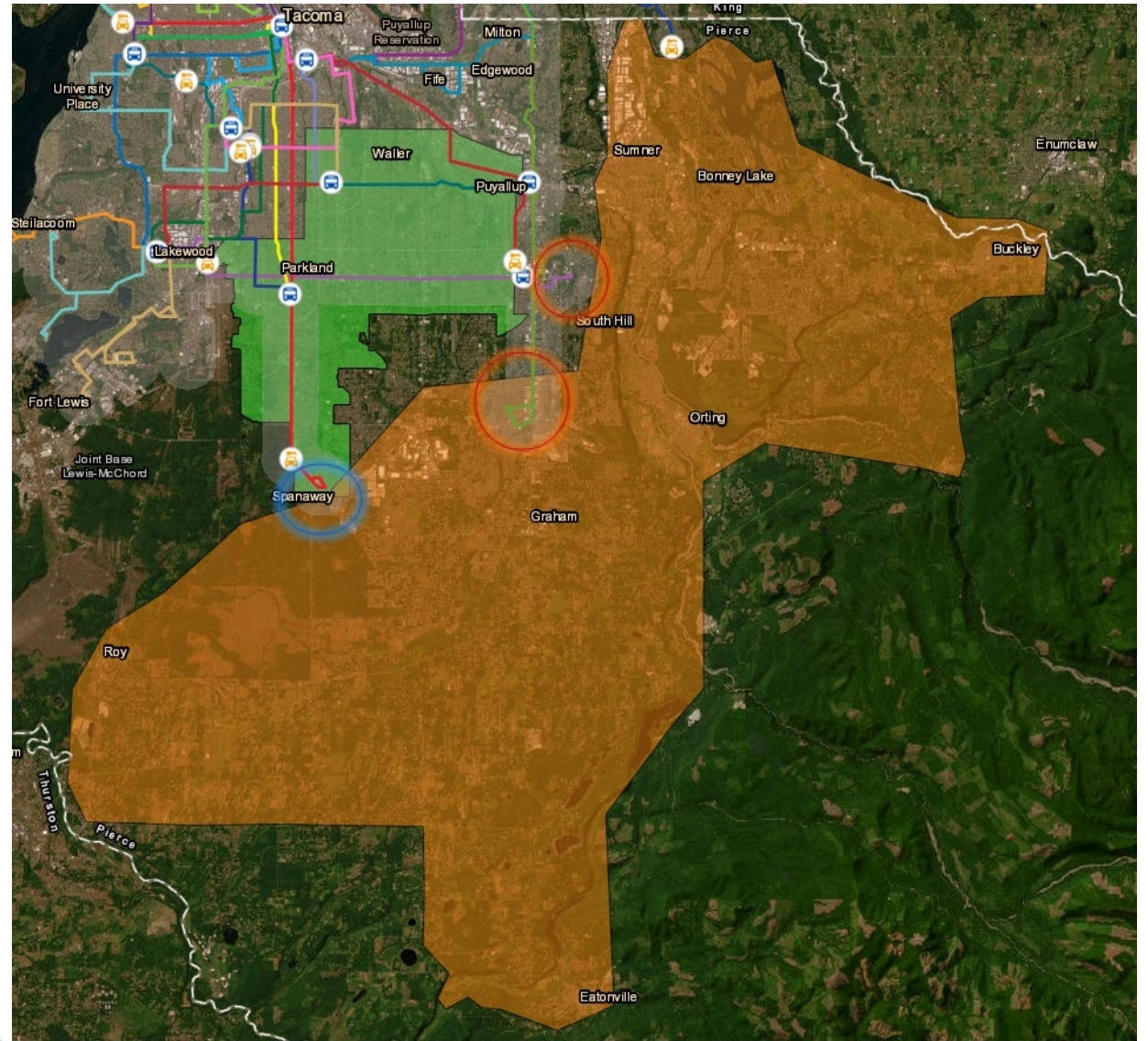


Coordination with....

1. **Fixed Route**
2. **Paratransit SHUTTLE**
3. **Transit Centers, Park and Rides**
4. **Sound Transit Regional Transit**
5. **Beyond the Borders**
6. **Transit app partner with Runner app**

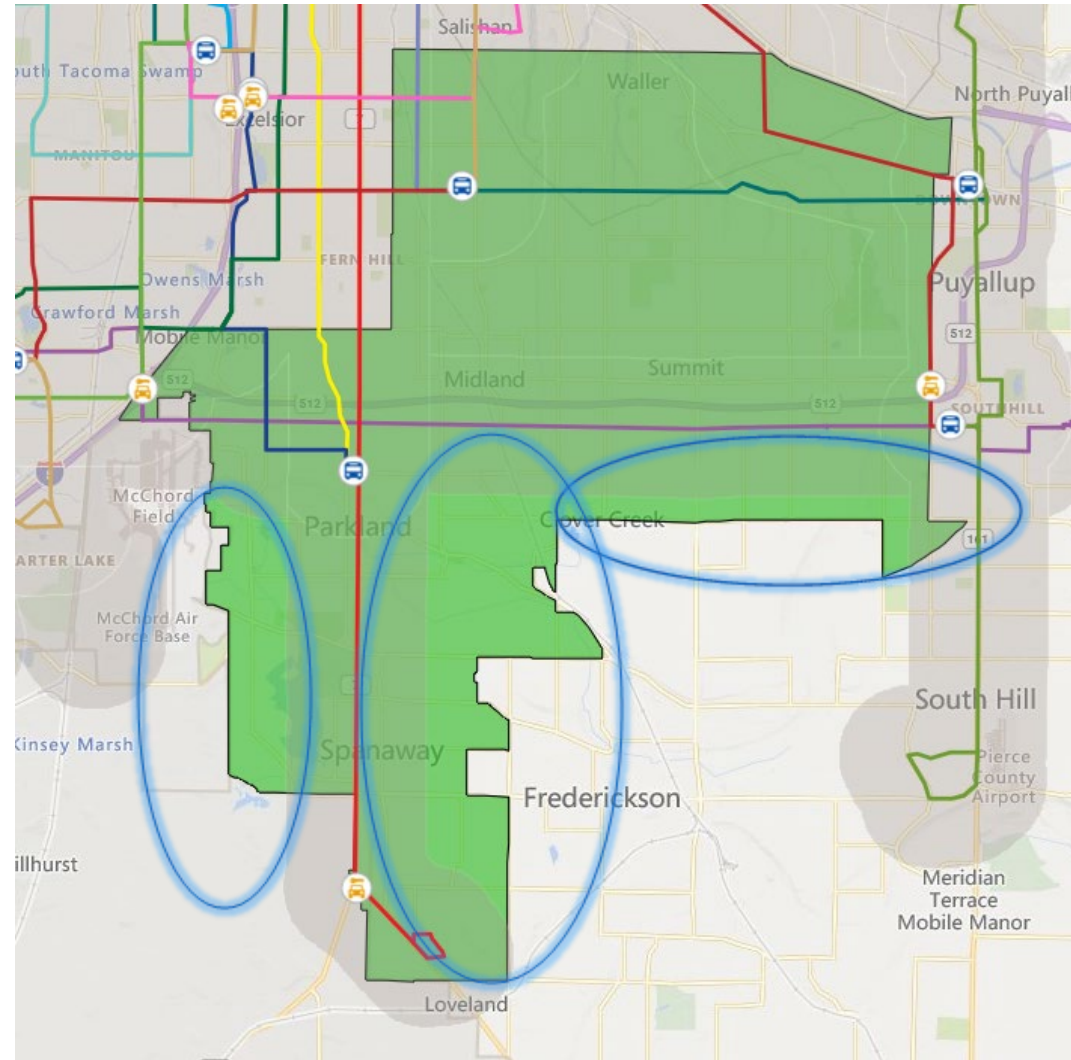
Pierce Transit and Pierce County Coordination

Beyond the Borders transports riders from the orange zone to designated pick up sites in the circled areas for Pierce Transit's Runner in the green zone and SHUTTLE in the gray zone.

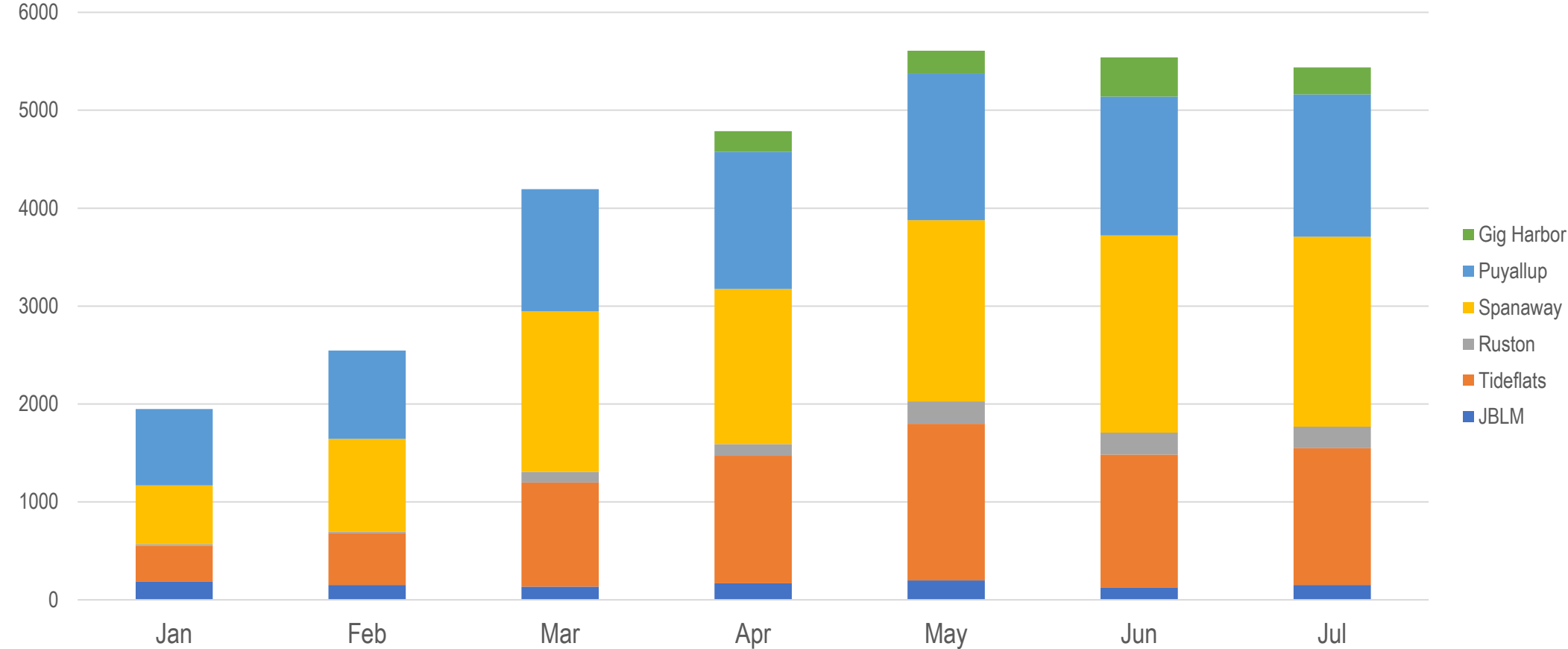


Runner and SHUTTLE

Runner's service area in green overlapping the SHUTTLE service areas in gray. Runner can fill in transportation gaps from the current SHUTTLE service.



2024 Runner Boardings By Zone



Budget

25-27 Biennium

Requested Amount: \$1,207,149

Match Amount: \$141,906

27-29 Biennium

Requested Amount: \$1,234,524

Match Amount: \$145,169

Testimonials

“This is a wonderful service for individuals who have off the beaten track starting points or destinations.”

“Every driver has been helpful and friendly. I must stop driving next week so I will be using Runner even more frequently. The price, since I am on a fixed income, allows me to get out more often and run my errands. No other service gives me such freedom and flexibility. I appreciate all who make this service possible.”

“I'm glad that it exists! That was a nice ride!”

Proposed Changes

- Separate Puyallup zone
- Combine all Spanaway/Buffer into one zone
- Make all zones first/last mile service
- Change from Curb to Curb to Corner to Corner

