

Regional Safety Action Plan

Growth Management Policy Board

January 16, 2025



Puget Sound Regional Council



We are leaders in the region to realize equity for all. Diversity, racial equity and inclusion are integrated into how we carry out all our work.

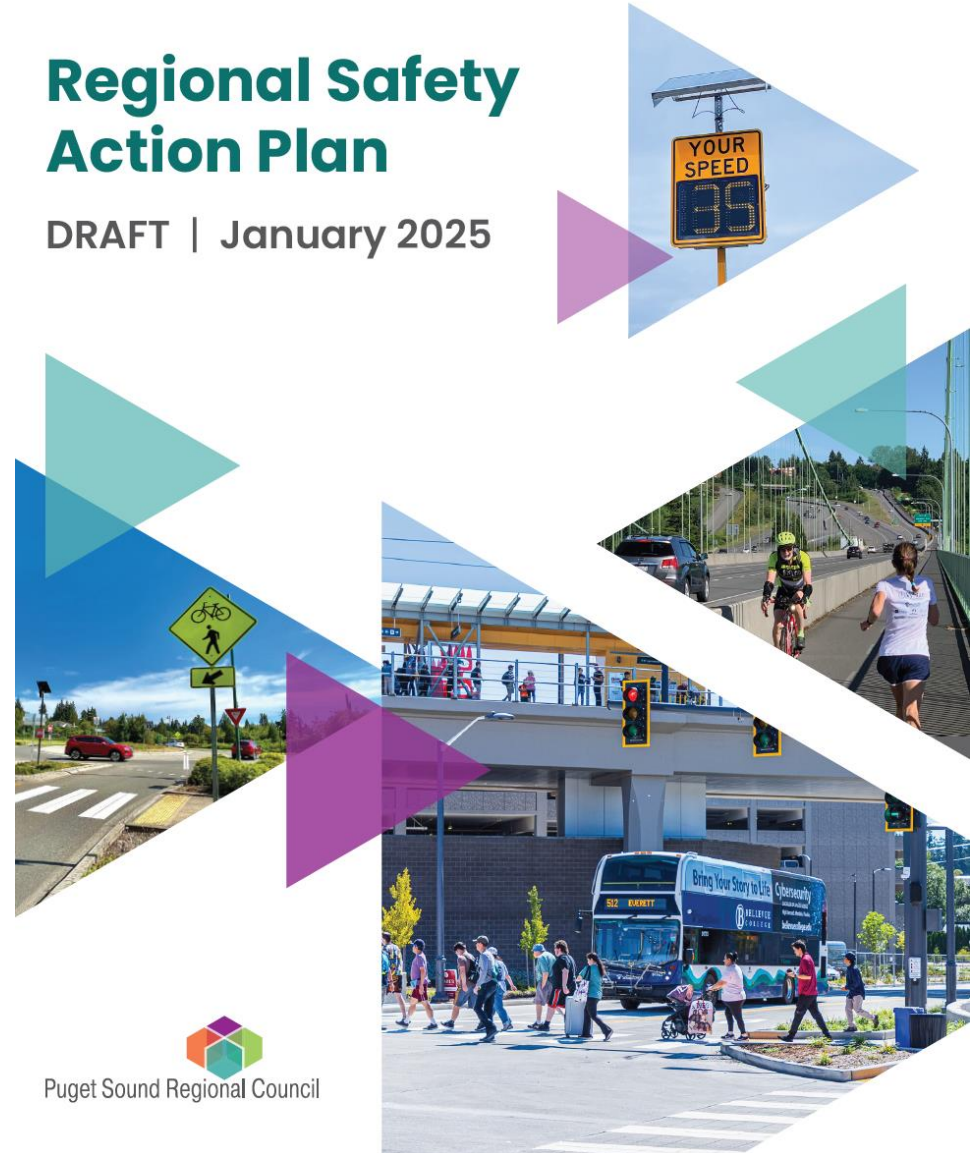
psrc.org/equity

Regional Safety Action Plan Overview

- Chapter 1: Overview
 - Problem statement and call to action
- Chapter 2: Safety Analysis
 - Highlights key findings based on crash data analysis, including emphasis areas, crash types, and contributing factors

Regional Safety Action Plan

DRAFT | January 2025



Puget Sound Regional Council



Regional Safety Action Plan Overview

- **Chapter 3:
Engagement and
Collaboration**
 - Describes Public Involvement framework and findings

- **17 Community Events**
- **35 Stakeholder Interviews**
- **4 Regional Public Meetings**
- **7 Focus Groups**
- **1,200+ Responses to Online Questionnaire**
- **Online Engagement Hub**
- **PSRC Board/Committee Briefings**



Regional Safety Action Plan Overview

- **Chapter 4: Strategies Toolbox**
 - Provides menu of strategies organized by crash types and emphasis areas identified in data analysis
 - Includes Design/Engineering and Planning/Policy/Program strategies
- **Chapter 5: Implementation and Next Steps**
 - Guidance on how local agencies can use the plan
 - Future step is determining how the RSAP should inform PSRC's planning going forward, including the RTP

Next Steps/Schedule

- Jan. 9: TPB authorized staff to release plan for comment
- Week of Jan. 13: Draft plan will be posted to the online Engagement Hub and comprehensive outreach to public and interested stakeholders is being conducted
- Public comment period will run through Feb. 14

Next Steps/Schedule



Welcome

Welcome to the Regional Safety Action Plan (RSAP) Engagement Hub. We're glad you're here!

**PSRC is taking action to improve roadway safety.
Let's do it together!**

Together, we can establish a regional culture of safety and advance solutions to achieve a thriving, equitable, and sustainable central Puget Sound.

As the region continues to grow from just over 4.4 million today to a projected 5.8 million by 2050, the Puget Sound Regional Council (PSRC) and partners are focused on addressing transportation safety and improving the way people get around.

How to use this Engagement Hub

- Advance through the hub by selecting the tab you would like to navigate to at the top of the page or by selecting the button labeled "Next Page" at the bottom of each page.
- Share this hub with others who might be interested.

- PSRC will be taking comments through mail, email, and the [Online Engagement Hub](#)



Next Steps

- March & April: TPB will review comments received on the Draft Plan
- April: TPB and EB will take action to recommend the Final Plan
- May 22: General Assembly to adopt Final Plan

Thank
You!