

# Household Travel Survey Program Updates from 2023 and 2025

Model Users Group  
15 January 2025



Puget Sound Regional Council



*We are leaders in the region to realize equity for all. Diversity, racial equity and inclusion are integrated into how we carry out all our work.*

[psrc.org/equity](https://psrc.org/equity)



# Overview



- Household Travel Survey (HTS) Program Background
- Highlights from the 2023 survey  
(Contributions from PSRC HTS analysis team, especially Grant Gibson, Kristin Mitchell, Joanne Lin, & Michael Jensen)
- Updates on 2025 survey



# Multi-year HTS program goal

- Random (address-based) sampling
- Complex stratification (representation of people, places, & behaviors)
- Post-processing (data cleaning & weighting)

The surveys capture **regionally representative** data for activity/travel behavior of **residents** on a **typical weekday**.

Data  
representing  
Mon–Thu

Other people/travels  
(unhoused people,  
visitors, pass-throughs,  
freight) not captured



# Who uses household travel survey data?

## Analysis

- Most recent regional travel behaviors & patterns
- Trends: comparisons with previous surveys

## Model development

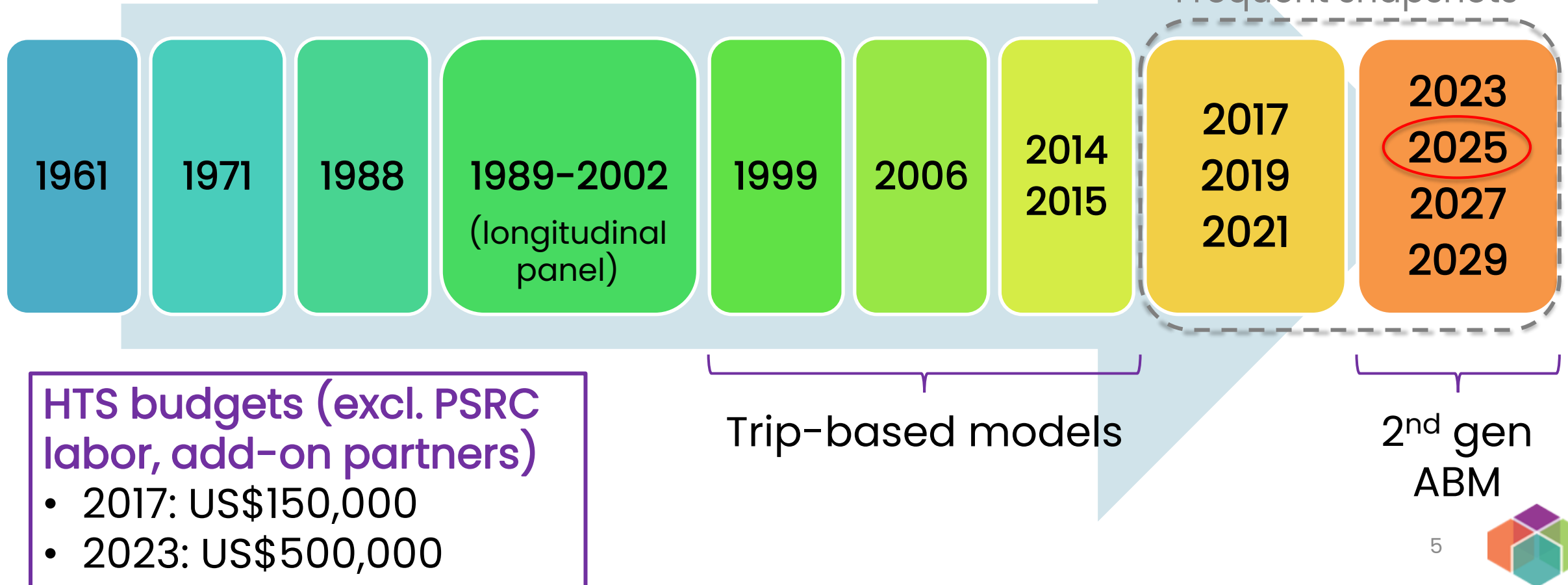
- SoundCast
  - Activity-based travel model system
  - Estimate activity/travel choice models
- UrbanSim
  - Parcel-based land use model system
  - Estimate residential location choice model



# Evolution of travel studies in the PSRC Region

## Current mandated planning cycles

- Regional Transportation Plan, 4yrs
- Growth Management Plan, 10yrs



# 2017, 2019, & 2023 samples & design

## Representative samples

### 2017 sample

- 3,275 households
- Redmond & Seattle add-ons

### 2019 sample

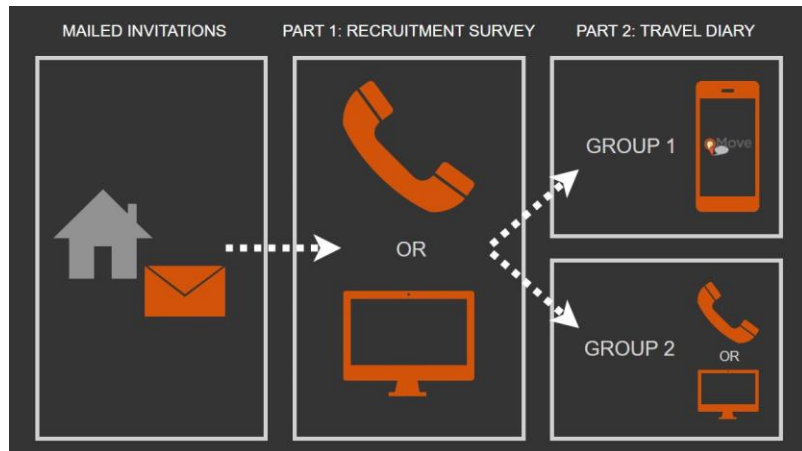
- 3,044 households
- Seattle add-on

### 2023 sample

- 3,661 households
- Bellevue & Seattle add-ons

## Two-part survey

1. Household (HH) info
2. Travel diary



## Two groups

### *Group 1:*

Smartphone  
up to 7 days

### *Group 2:*

Online/phone  
1 day only

### 2017

695 HHs  
(21%)  
34,193 trips  
(66%)

### 2019

1,047 HHs  
(34%)  
59,853 trips  
(82%)

### 2023

855 HHs  
(23%)  
38,100 trips  
(71%)

2,580 HHs  
(79%)  
17,468 trips  
(34%)

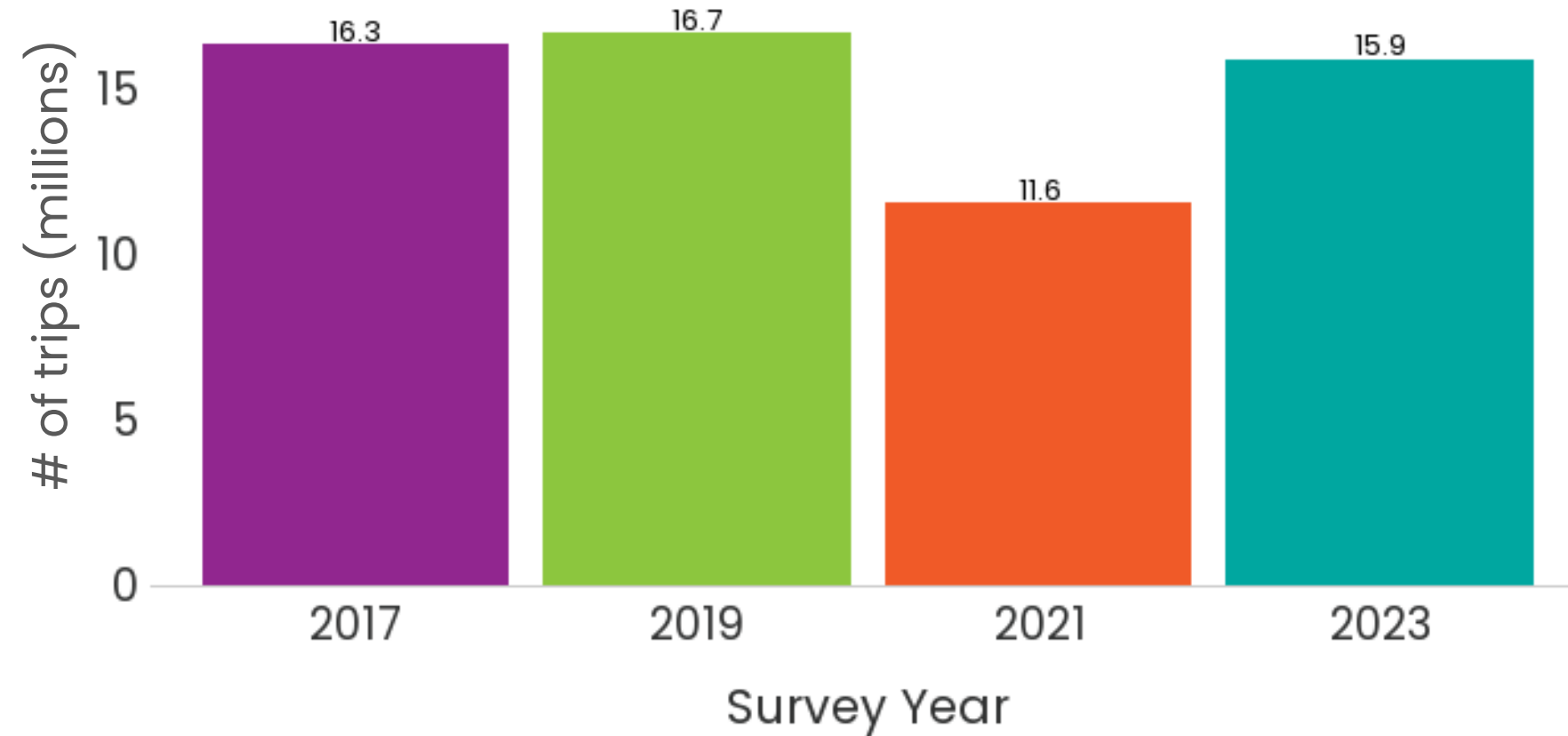
1,997 HHs  
(66%)  
13,002 trips  
(18%)

2,806 HHs  
(77%)  
13,002 trips  
(29%)



# Overall travel

Total trips in region on average weekday



Number of trips made on an average weekday in 2023 is nearly back to pre-pandemic level.



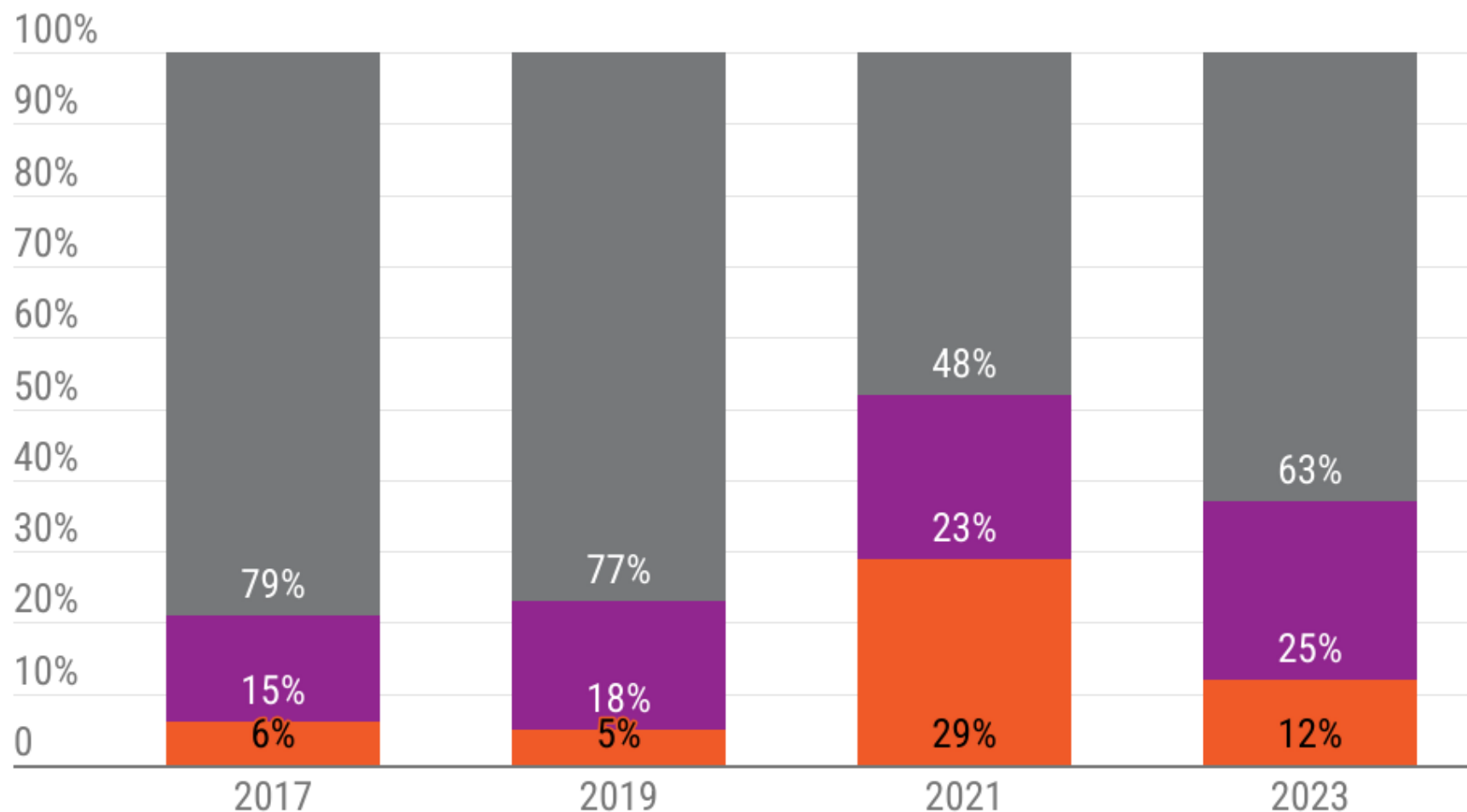


# Work location

Share of workers regionally

See [8/27 TDM](#) for related analyses by industry, income, race/ethnicity, age, gender, geography

● Fully At Home ● Hybrid ● Fully in Person



Most workers work fully in person away from home (63% in 2023).

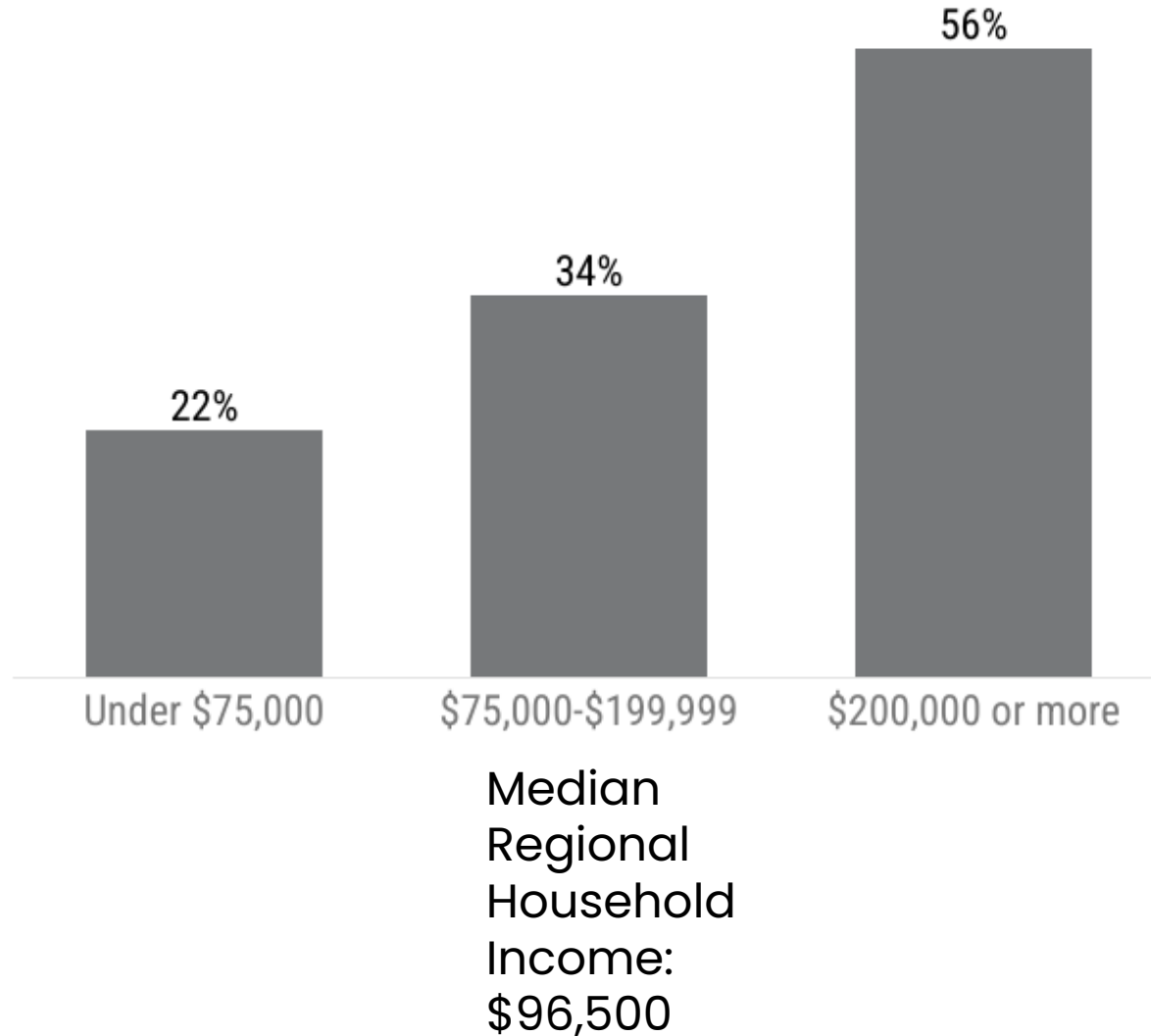
Fully at home workers peaked at 29% in 2021.

Hybrid workers increased after COVID-19 & remain high in 2023.





# Working at Home by Household Income



Strong correlation with industry and income, strong correlation with industry and working from home=>  
Strong correlation with income and working from home



# Average weekday vehicle miles travel

Per resident by home location, 2023 only

See [9/20 RTOD](#) for travel in Regional Growth Centers & High-capacity Transit communities

Home Location	Vehicle Miles Travel (VMT) per resident
Region	16
All Regional Growth Centers (RGC)	10
Not in RGC/In Urban Growth Areas (UGA)	15
Outside UGA	25

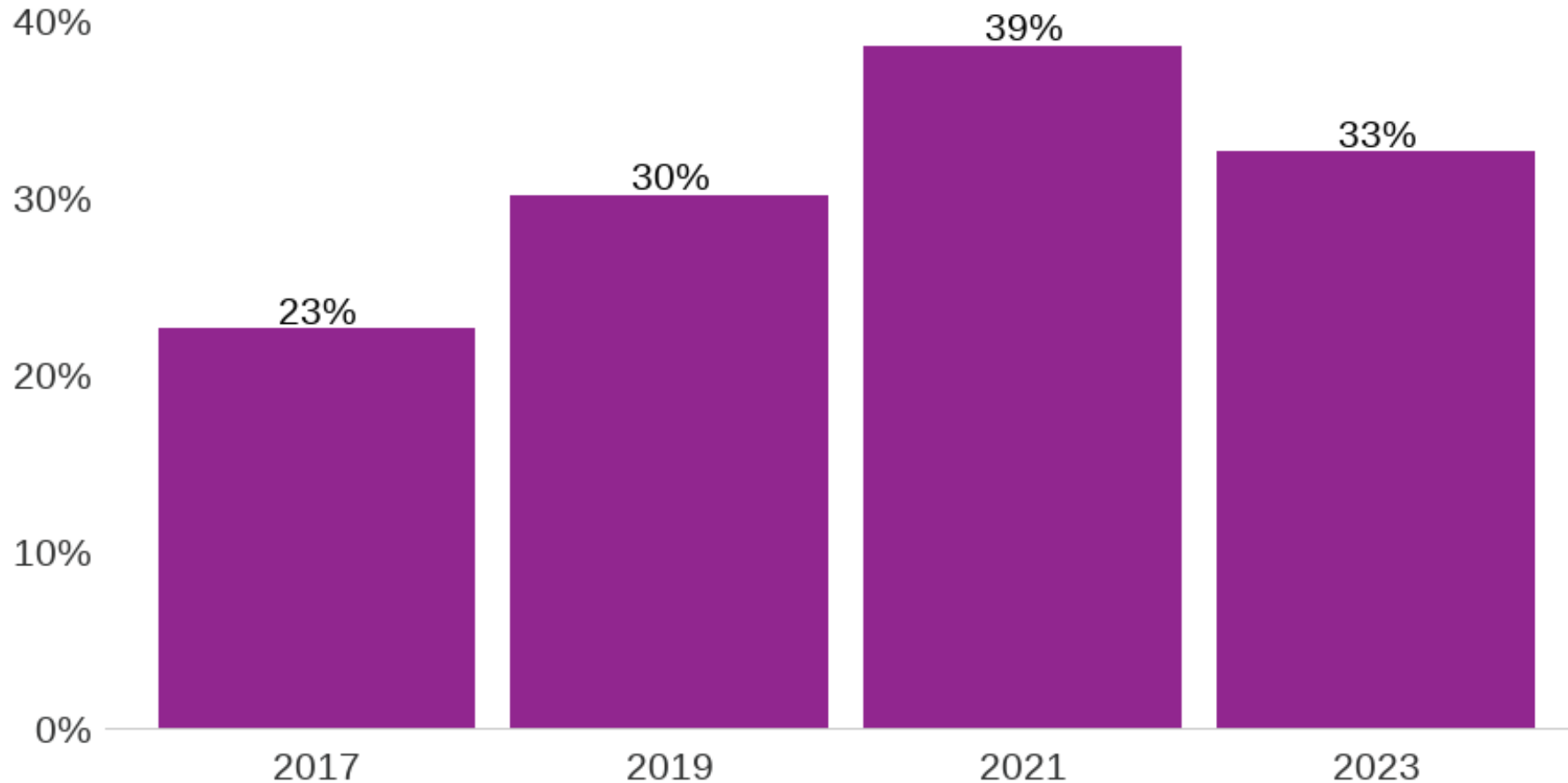
People who live in regional growth centers have the lowest VMT per resident in the region.



# Home package delivery

Share of households receiving packages on average weekday

See [10/9 FAC](#) for analyses on deliveries & other travel demands induced by residents



Home package deliveries peaked in 2021.

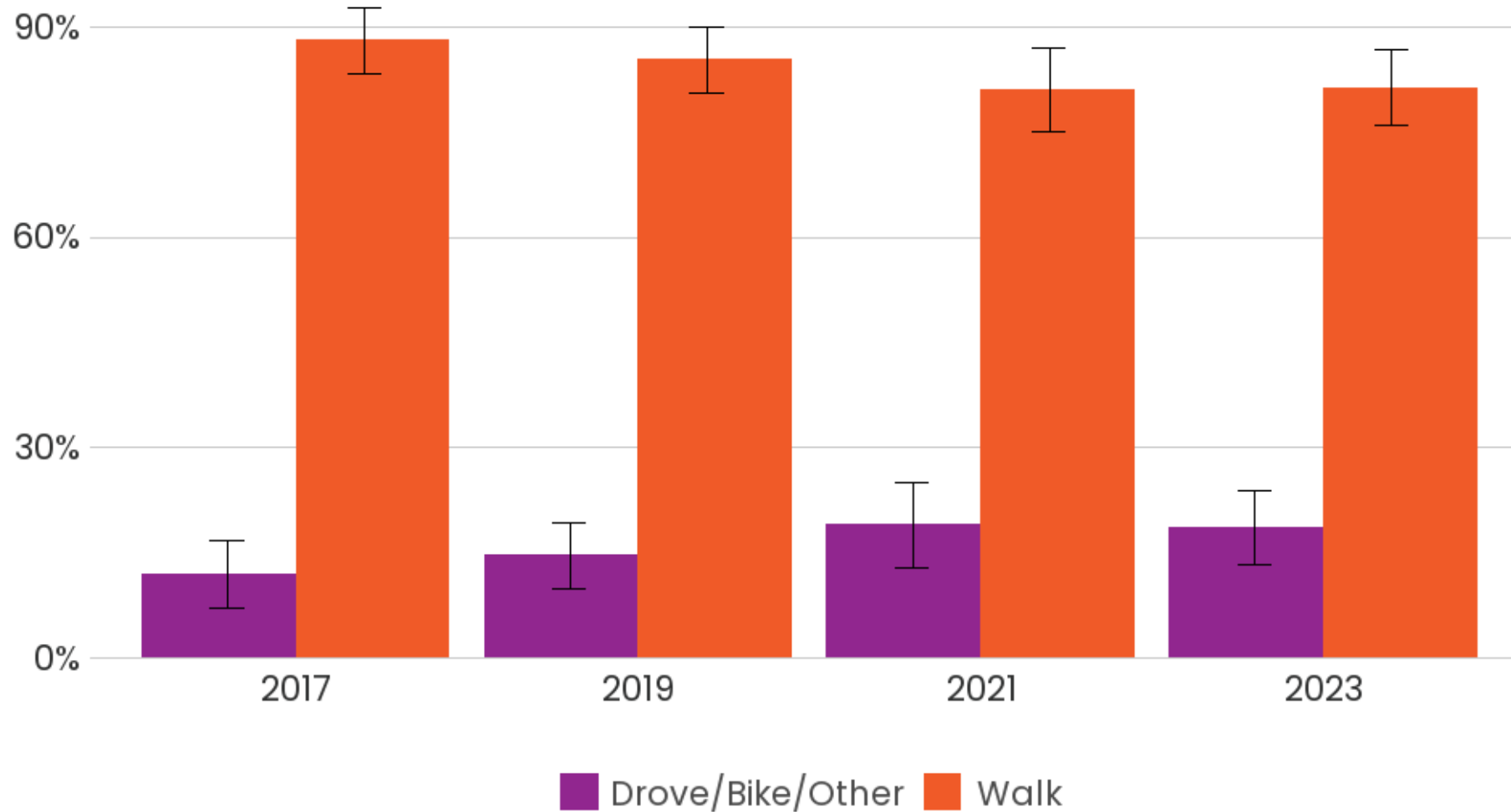
A third of regional households got packages on an average weekday in 2023.



# Transit access mode

Share of transit trips accessed by walk & other modes

See [10/23 TOC](#) for analyses on transit behaviors



Most people walk to transit. In 2017, 88% accessed transit by walking. In 2023, it had dropped to 81%, but the decrease is within the margin of error.





# 2025 Survey Design

## SPONSOR

PSRC

Pierce County (Unincorporated)

## TARGETED SAMPLE (HOUSEHOLDS)

1,770

850

## SAMPLE GEOGRAPHY

King County

Kitsap County

Pierce County (Incorporated)

Pierce County (Unincorporated)

Snohomish County

## SAMPLE STRATA

General

Hard-to-Survey

Rural

Walk/Bike/Transit



# 2025 HTS

2025 January–Feb

Direct coordination with some jurisdictions to elevate awareness of survey project

February – June Data collection

July

Data cleaning, processing, weighting begins

2026 March

Final data delivery & publication



# Household Travel Survey Resources

## PSRC Webpage for Travel Surveys

<https://www.psrc.org/our-work/household-travel-survey-program>

## Downloadable Data Page

<https://household-travel-survey-psregcncl.hub.arcgis.com/>

- Has 2017-2019-2021-2023 data, geography at Census Tracts

## Beta Web Application to Explore Data

<https://psrcwa.shinyapps.io/travel-survey-explorer/>

- Can query by home county, year



# 2024 presentations of 2023 HTS findings

- **Transportation Demand Management group** ([8/27 presentation](#) on workplaces, commutes, telework)
- **Bicycle Pedestrian Advisory Committee** ([9/10 presentation](#) on walk, bike, roll)
- **Coordinated Mobility & Accessibility Committee** ([9/18 presentation](#) on people with disabilities, older adults, youth, people with lower income)
- **Regional Transit-Oriented Development Committee** ([9/20 presentation](#) on travel in Regional Growth Centers, High-Capacity Transit communities)
- **Freight Advisory Committee** ([10/9 presentation](#) on deliveries & other travel demands induced by residents)
- **Transit Operator Committee** ([10/23 presentation](#) on transit behaviors)







Suzanne Childress

Principal Data Scientist, [schildress@psrc.org](mailto:schildress@psrc.org)

Brian H. Y. Lee, Ph.D.

Program Manager, [blee@psrc.org](mailto:blee@psrc.org)

**Thank You!**



Puget Sound Regional Council