

Transit in the Regional Transportation Plan

Transit Operators Committee, January 22, 2025



Puget Sound Regional Council



We are leaders in the region to realize equity for all. Diversity, racial equity and inclusion are integrated into how we carry out all our work.

psrc.org/equity

Today's Discussion

- VISION 2050 regional growth strategy envisions much more reliance on transit for travel through the day and throughout the week.
- Feedback on qualities of transit service to highlight in RTP
 - Frequency
 - Span of Service
 - Other?

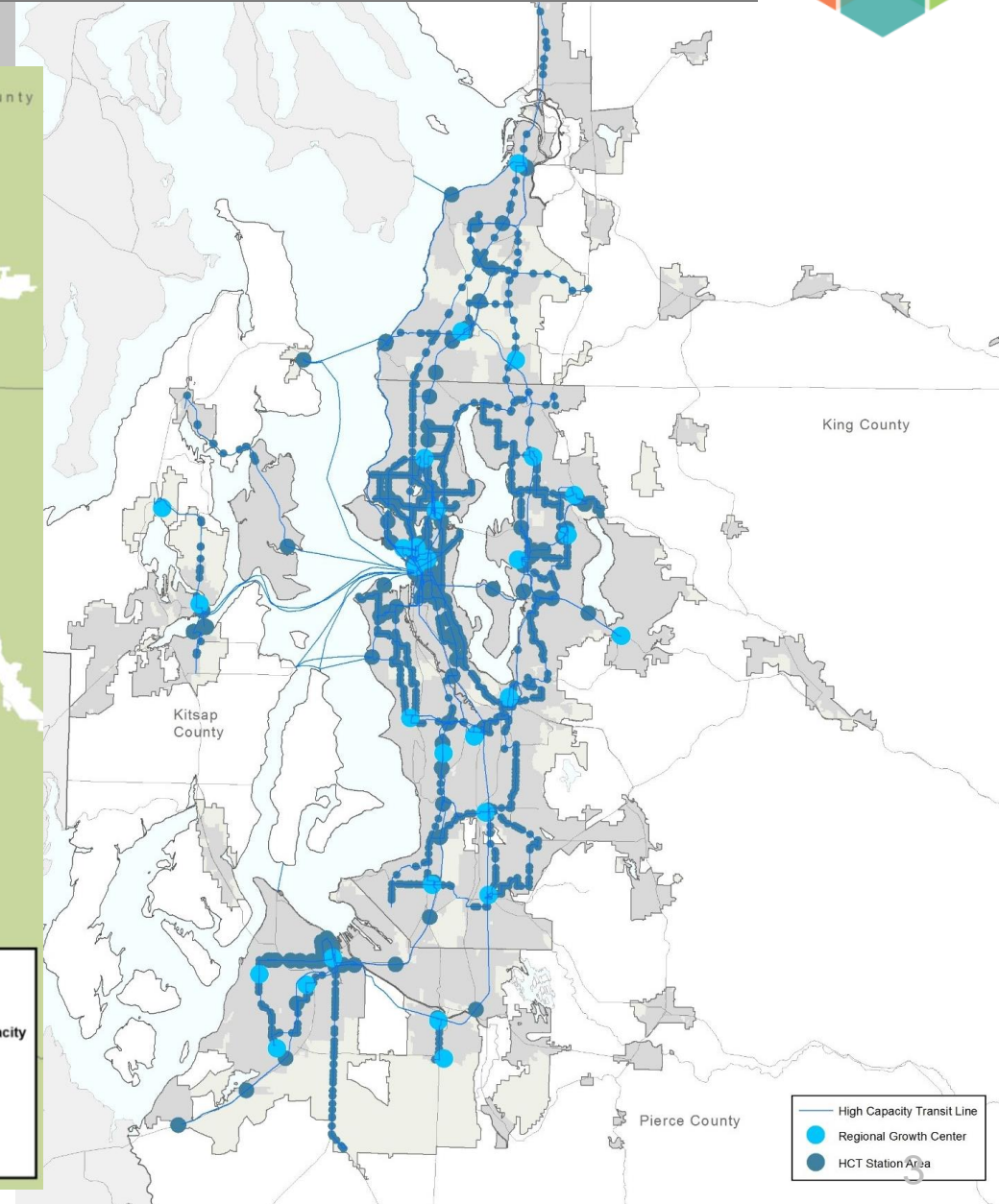
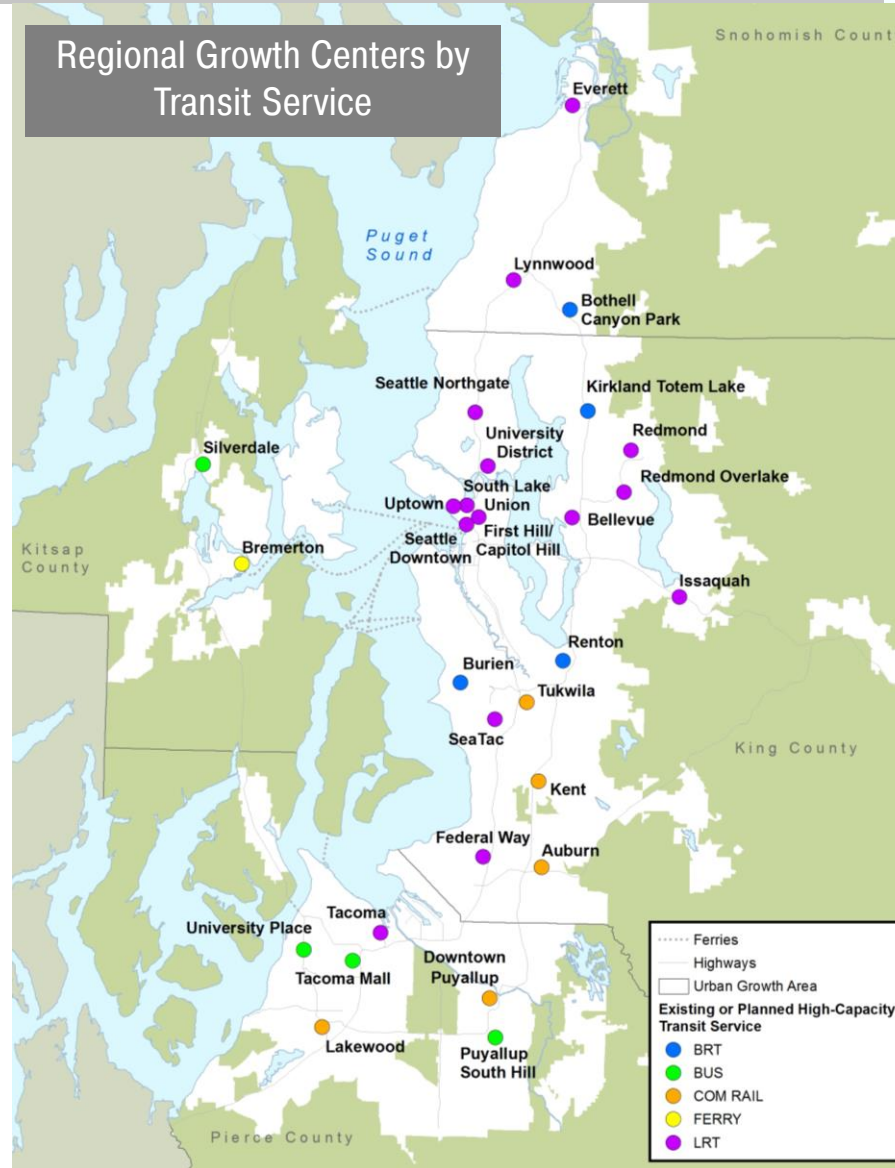


Centers and Transit Areas

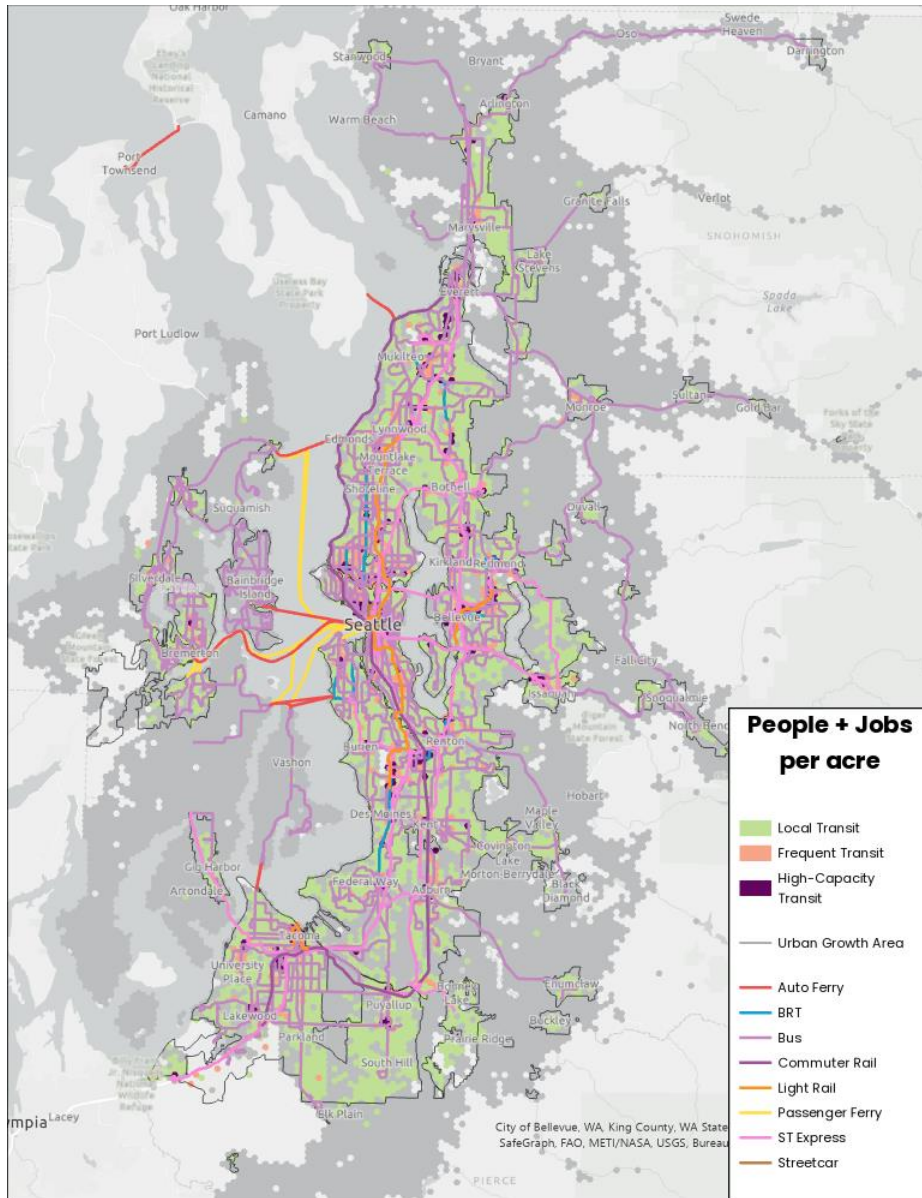


Goal for **65% of population growth** and **75% of employment growth** to occur in regional growth centers and station areas

– This is about 500,000 housing units



Where is the transit service?



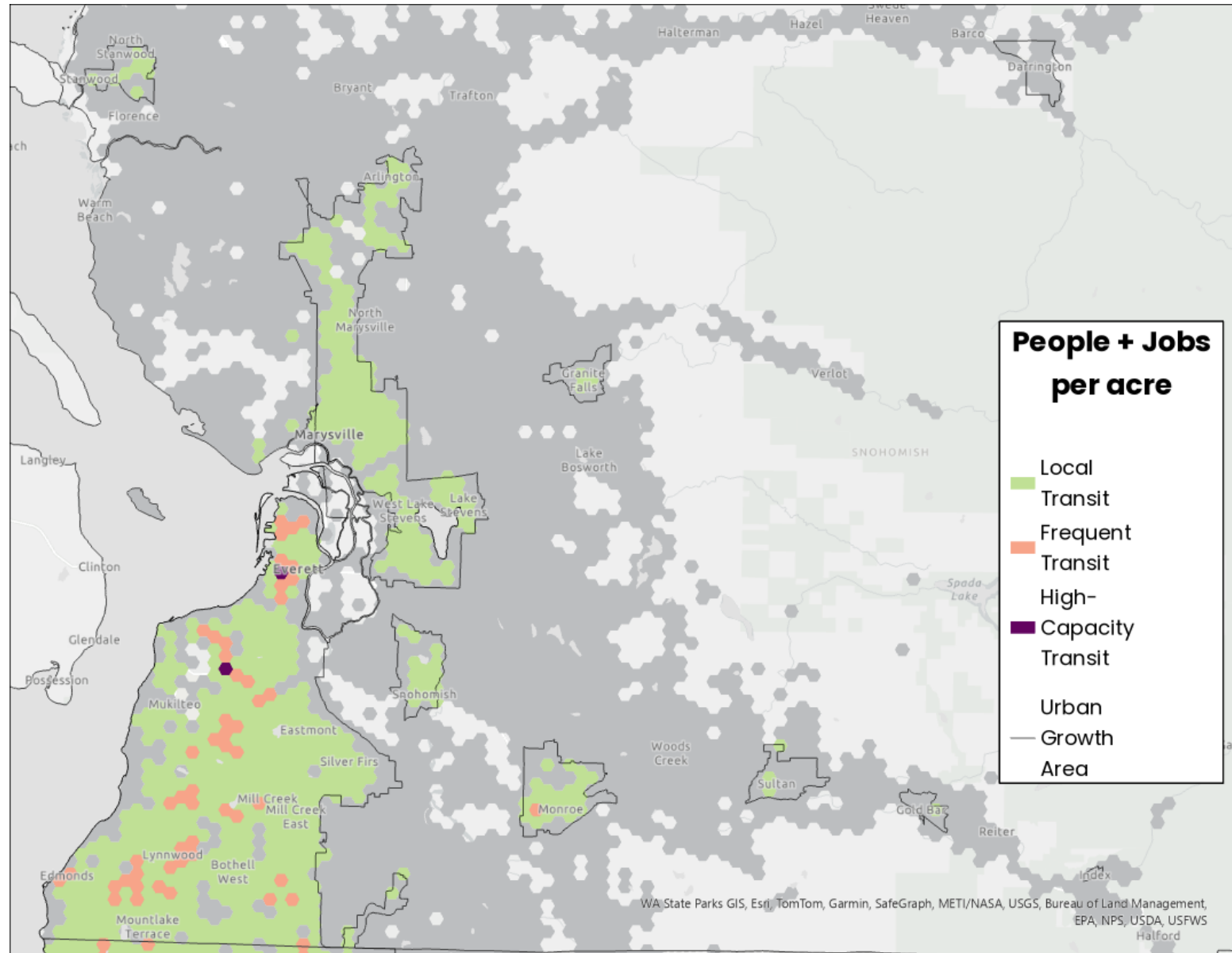
The Regional Transportation Plan will look at where people & jobs are today and 2050 to help identify any possible gaps. The RTP will look at a variety of different types of transit including:

- All Transit
- High-Capacity Transit (Light Rail, Commuter Rail, Street-Car, Ferry and Bus Rapid Transit)
- Frequent Transit
- All-Day transit



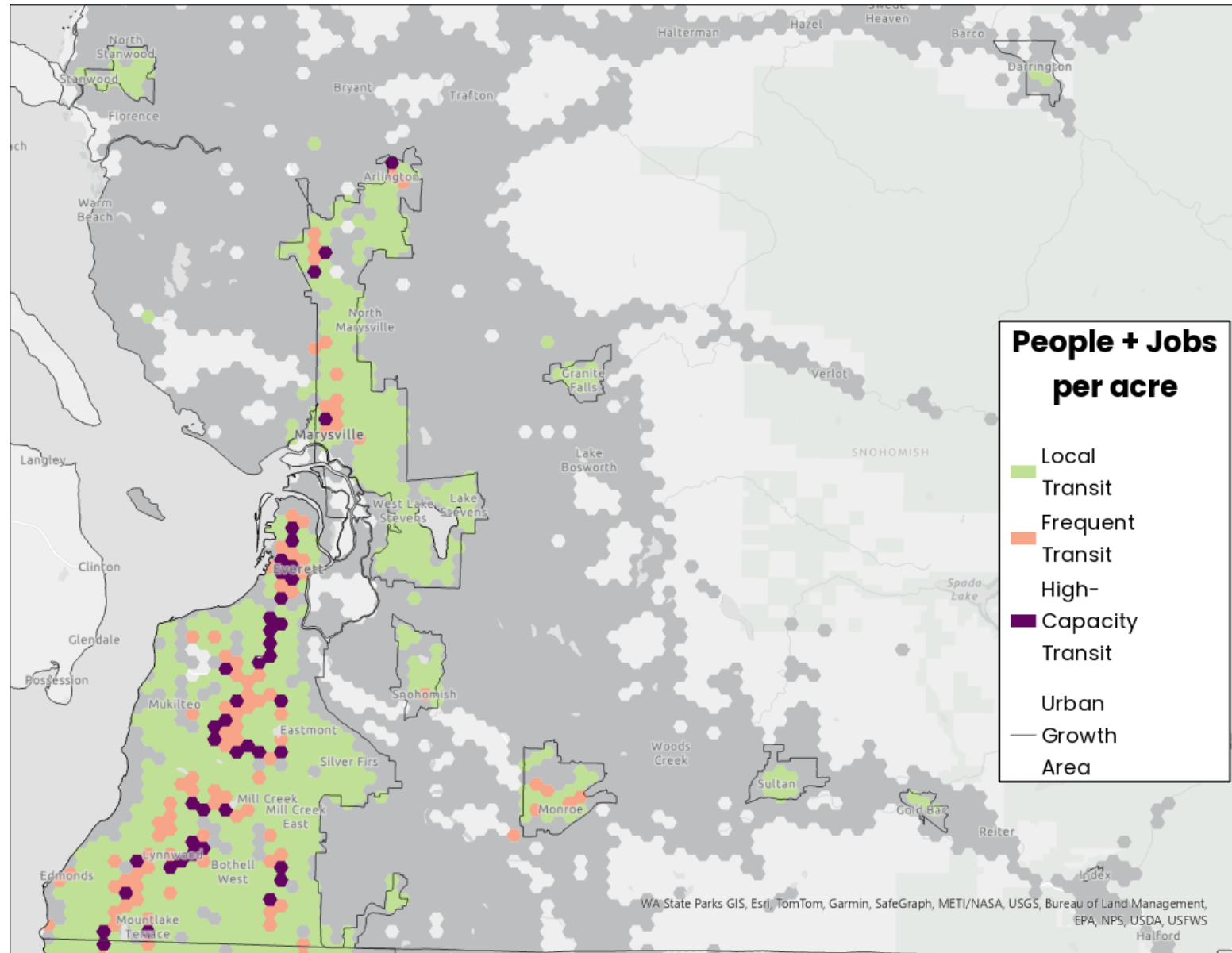
Transit Supportive Density: 2024

- 869,000 people in the **PSRC region** lived in areas that support frequent or High-Capacity transit (**19%** of the population)
- 85,000 people in **Snohomish County** lived in areas that support frequent or High-Capacity transit (**10%** of the population)



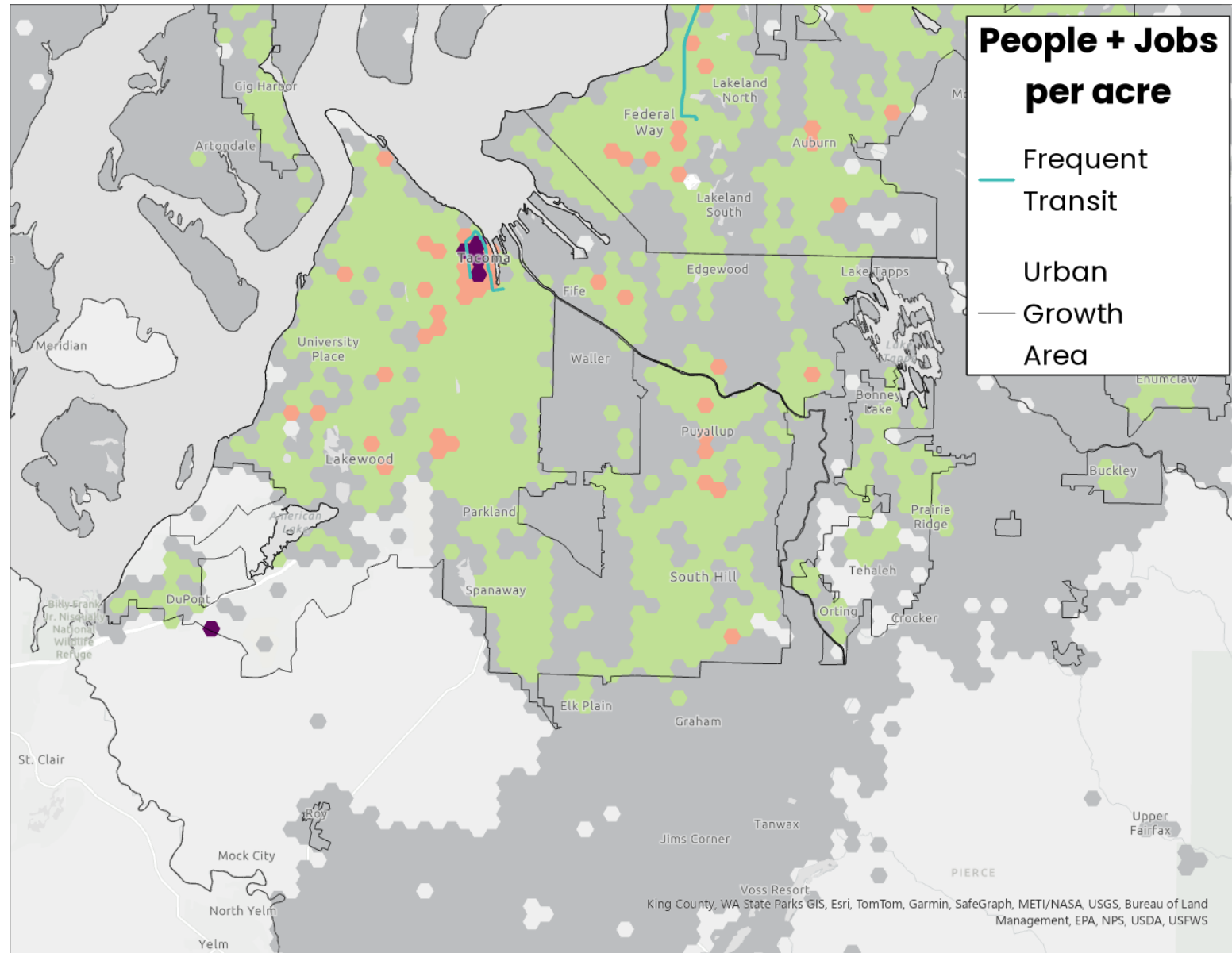
Transit Supportive Density: 2050

- 2,120,000 people in the **PSRC region** will live in areas that support frequent or High-Capacity transit (**36%** of the population)
- 397,000 people in **Snohomish County** will live in areas that support frequent or High-Capacity transit (**32%** of the population)



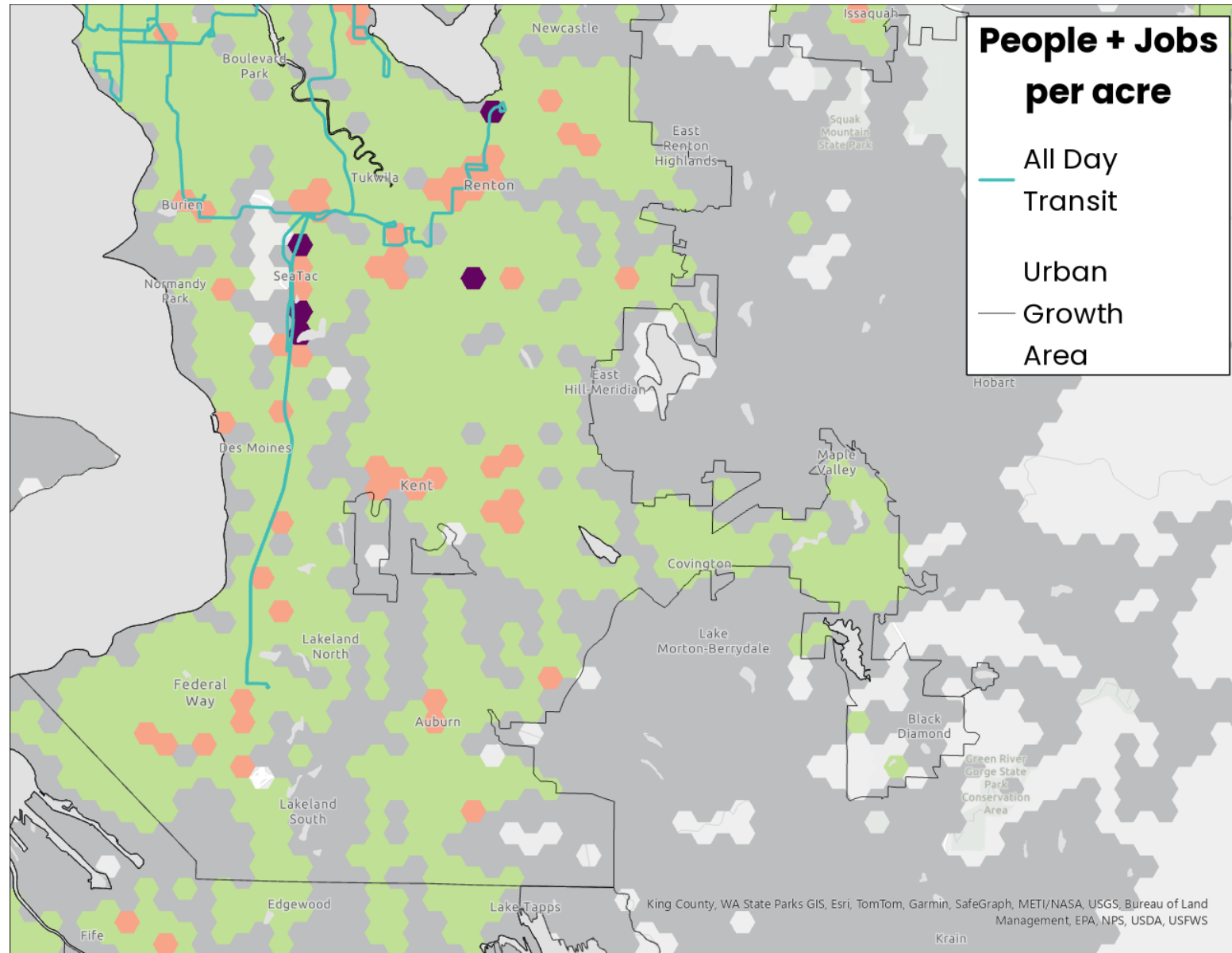
Transit for at least 12hrs & every 15 minutes: 2024

- 665,000 people in the **PSRC region** live within ¼ mile of Frequent transit (**15%** of the population)
- 26,000 people in **Pierce County** live within ¼ miles of frequent transit (**3%** of the population)



Transit 4am -10pm & every 20 minutes: 2024

- 884,000 people in the **PSRC region** live within ¼ mile of All-Day transit (**20%** of the population)
- 803,000 people in **King County** live within ¼ miles of All-Day transit (**34%** of the population)



Discussion

Is PSRC on the right track with studying frequencies and span of service in support of VISION 2050?

- What frequencies should be studied to account for planned growth?
- What spans of service should be considered?
- Transit service coverage: How should PSRC account for growth in microtransit and similar services?



Thank You!

Craig Helmann
Director of Data
chelmann@psrc.org

Gil Cerise
Program Manager
Transportation Planning
gcerise@psrc.org



Puget Sound Regional Council