

Freight Advisory Committee



February 12, 2025


Puget Sound Regional Council



We are leaders in the region to realize equity for all. Diversity, racial equity and inclusion are integrated into how we carry out all our work.
psrc.org/equity

Agenda

1. **Welcome and Introductions (9:30)** – *Doug Cox, PSRC*

2. **Action: Approval of Meeting Summary for December 11, 2024* (9:35)**

3. **Discussion: Existing Freight Conditions for RTP (9:40)** – *Doug Cox, PSRC*

PSRC staff will share and the committee will discuss the preliminary freight system information being developed for the RTP Existing Conditions report.

4. **Discussion: PSRC Travel Models (9:55)** – *Craig Helman, PSRC*

PSRC staff will provide an overview of the travel models that PSRC maintains and discuss potential opportunities and constraints in their application to freight analysis for the RTP. The committee will discuss potential freight trends to consider including in the RTP.

5. **Discussion: 2025 FGTS Data Collection (10:25)** – *Wenjuan Zhao, WSDOT and Mitch Koch, PSRC*

WSDOT and PSRC staff will discuss the process and timeline for the 2025 Freight and Goods Transportation System (FGTS) data collection process.

6. **Discussion: Other Business and Announcements (10:50)**

7. **Information Item: VISION2050 Awards: Call for Nominations 2025***

8. **Adjourn (11:00)**

9. **Next Meeting:** April 9, 2025



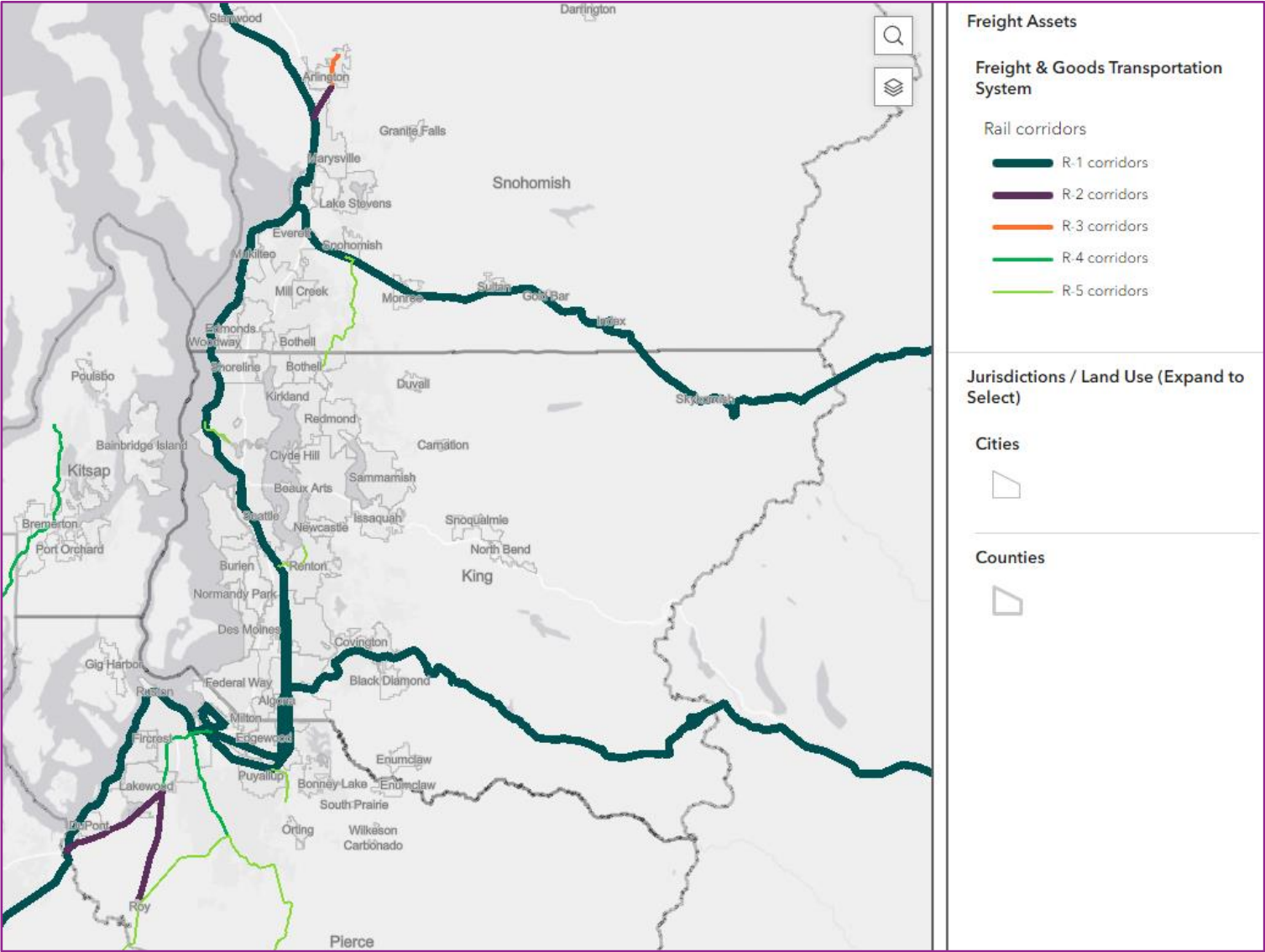
2026 RTP – Existing Freight Conditions Overview

Three categories of information to set the foundation –

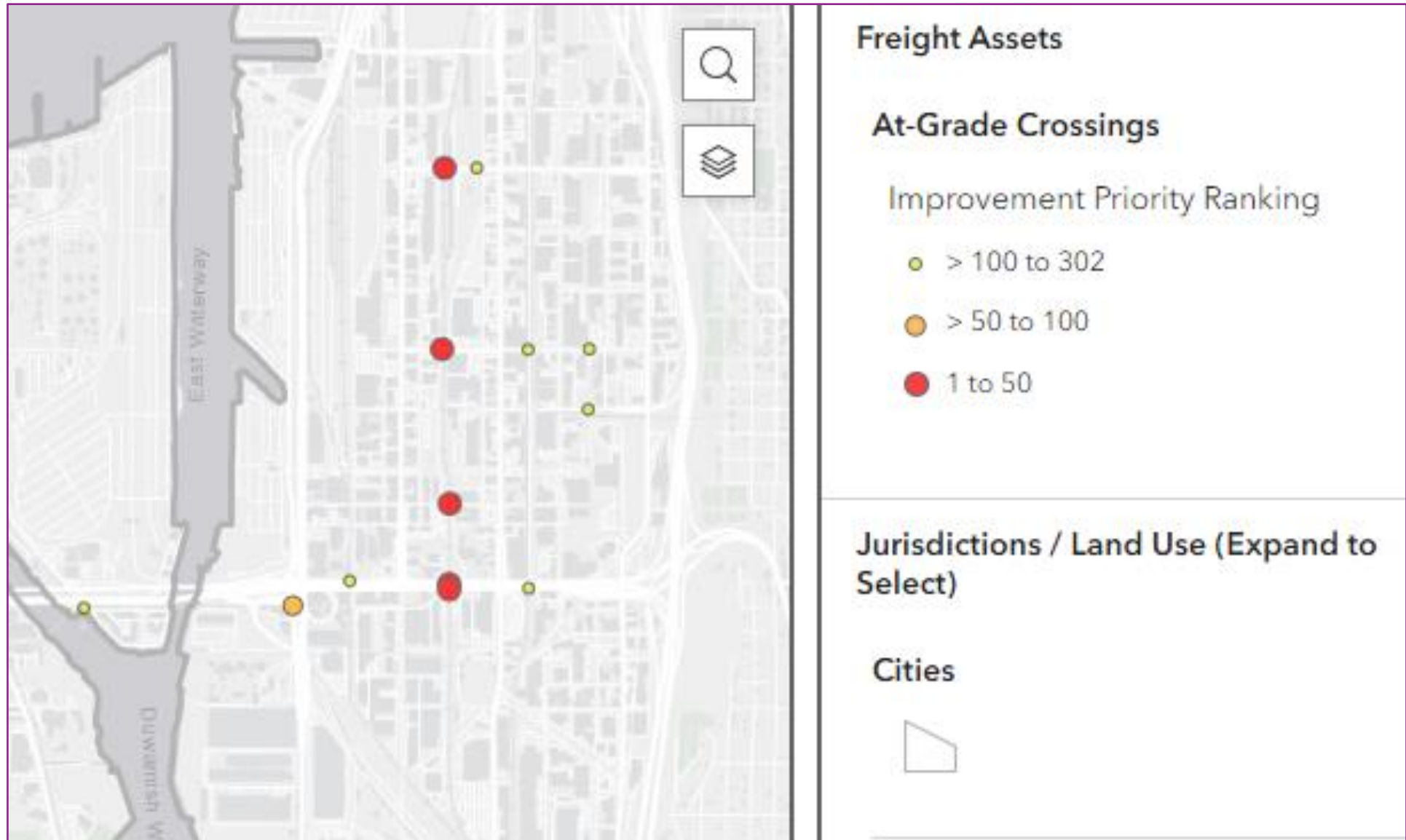
- 1) Inventory of freight assets included in PSRC's [Transportation System Conditions Map](#) (aka VIZ tool)
- 2) Foundational data / statistics from PSRC's modeling work
- 3) Recent WSDOT and FMSIB work products



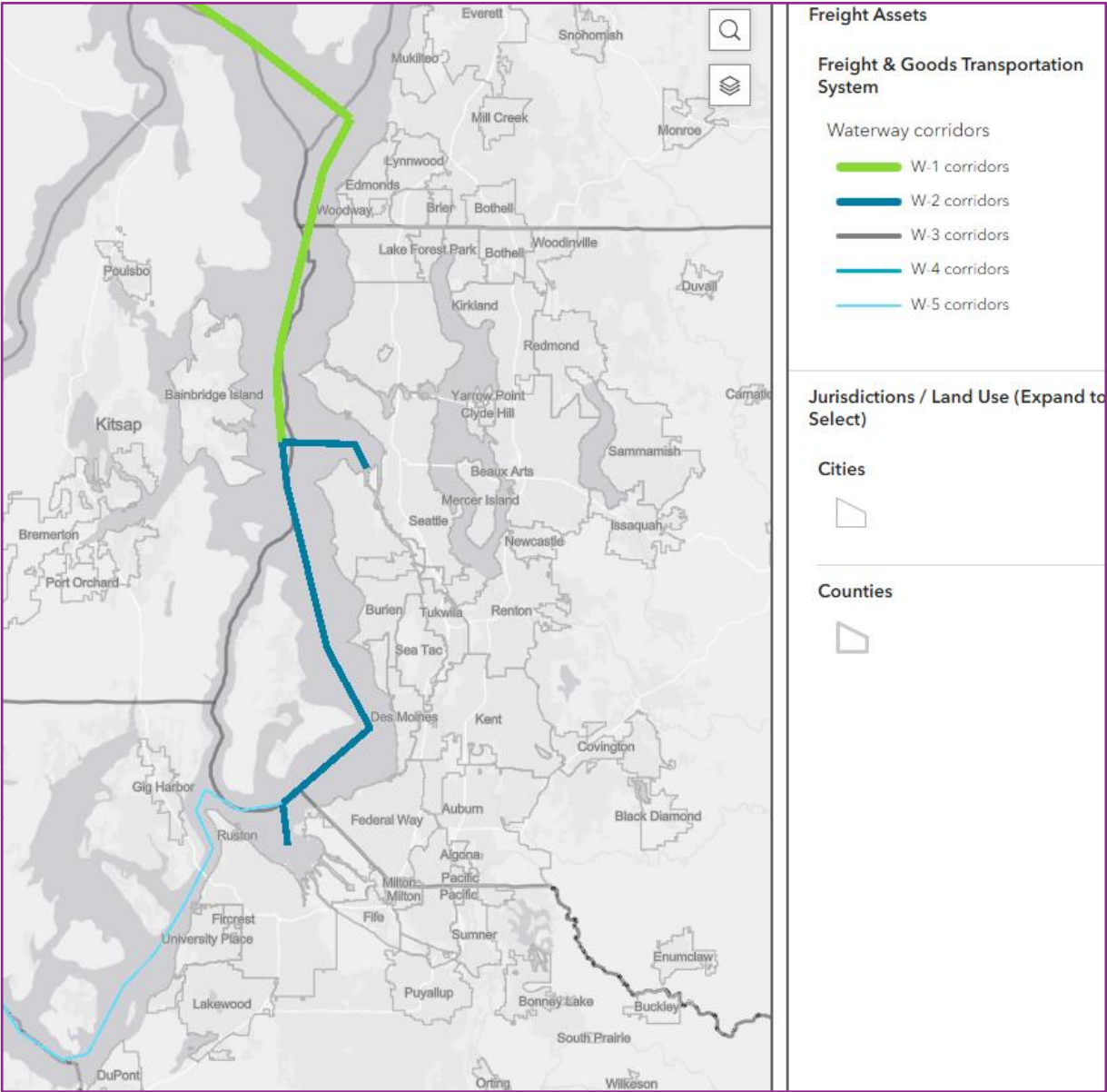
2026 RTP – Freight Assets – Rail Corridors



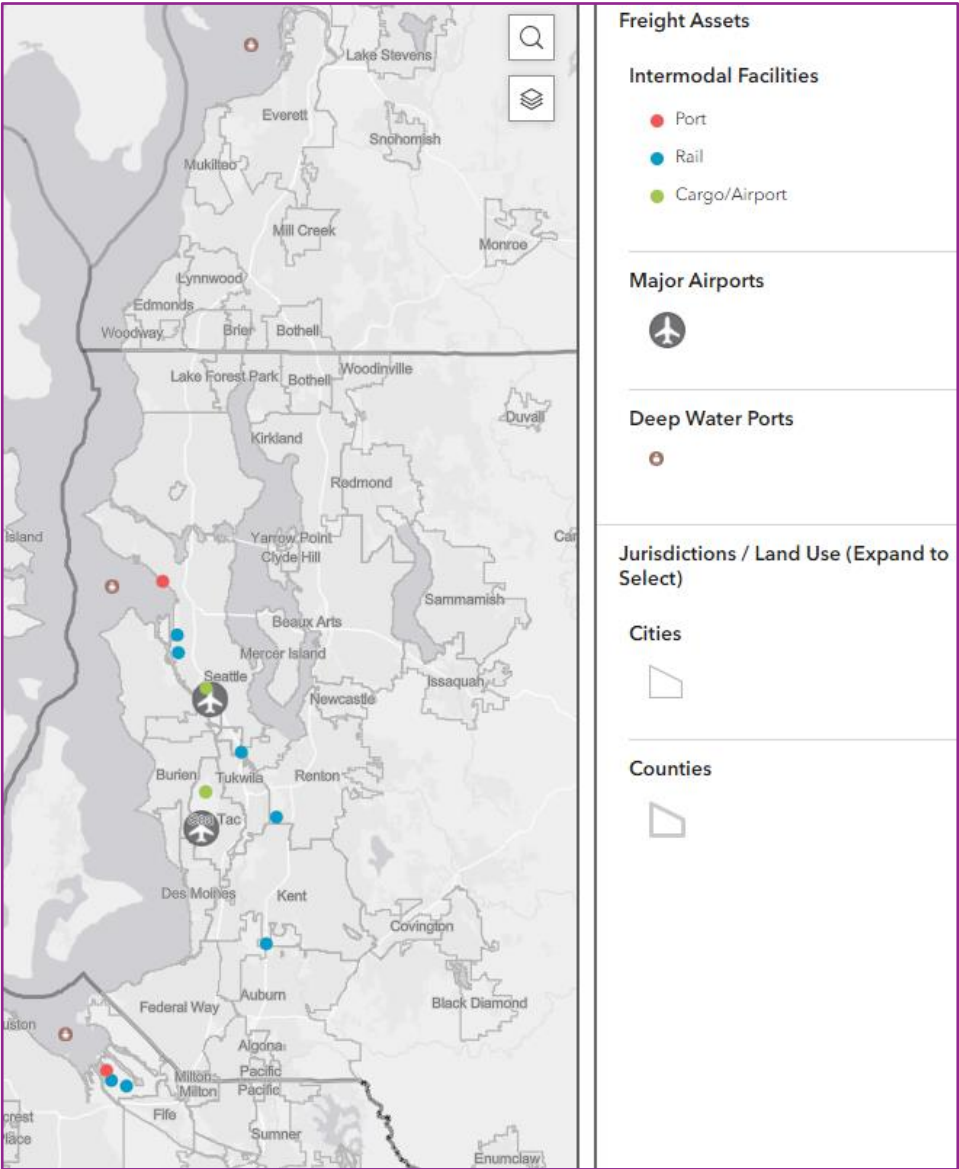
2026 RTP – Freight Assets – At-Grade Crossings



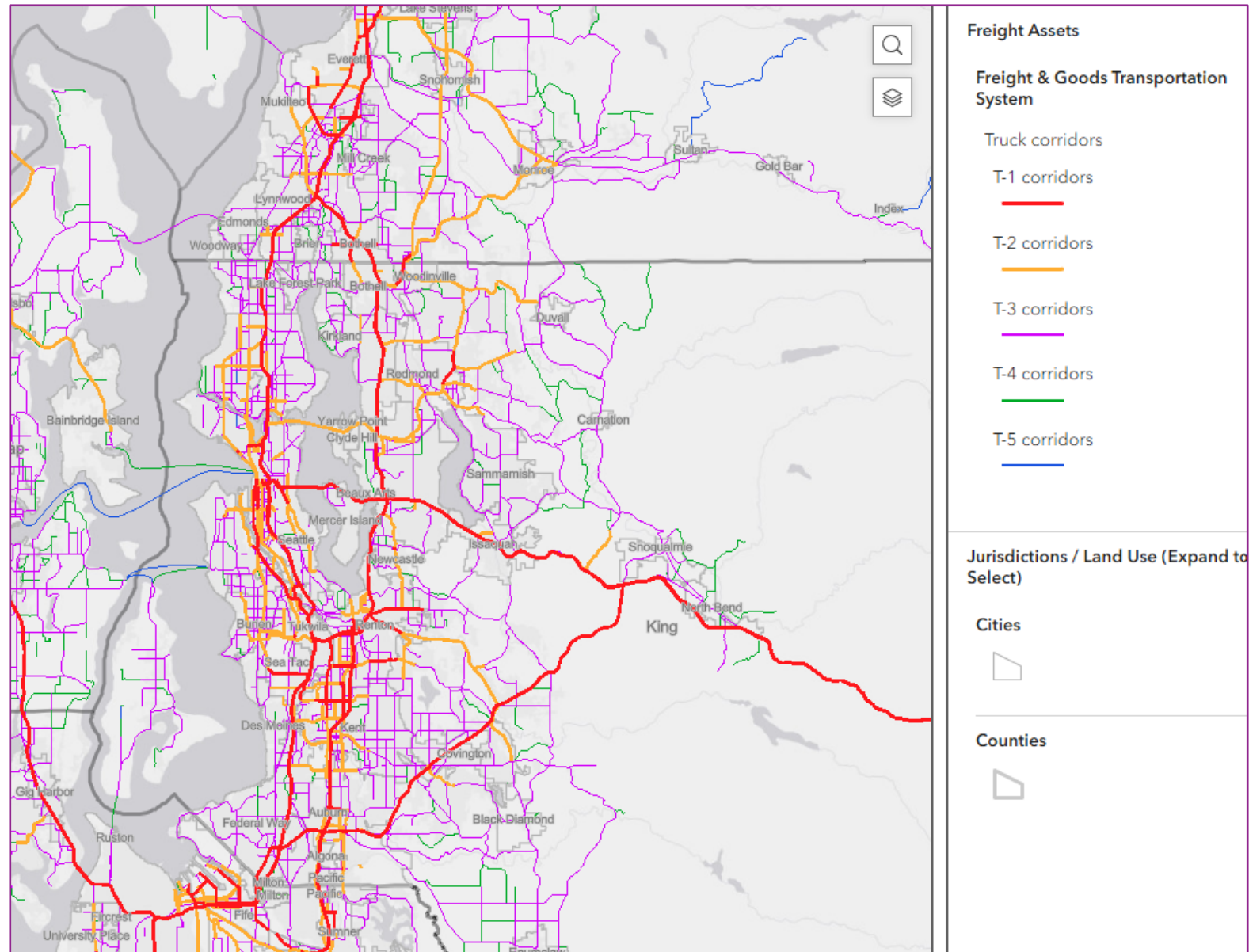
2026 RTP – Freight Assets – Waterway Corridors



2026 RTP – Freight Assets – Ports and Intermodal Facilities



2026 RTP – Freight Assets – Truck Routes



2026 RTP – Existing Freight Conditions – Current Truck Metrics

Foundational data from PSRC's Model –

- Truck % of total ADT
- Truck VMT
- EFA households within 500' of major truck routes

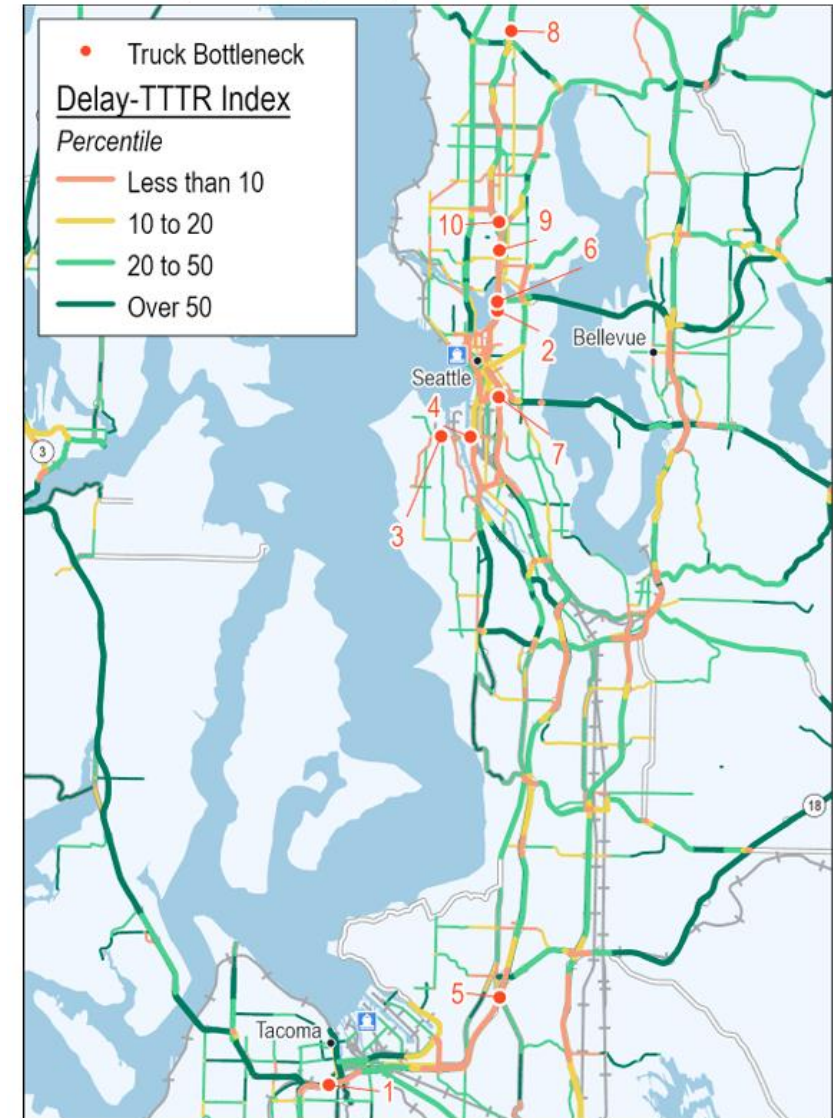


2026 RTP – Existing Freight Conditions – State Freight Plan

2023 State Freight Plan –

- Delay
- Truck Travel Time Reliability (TTTR)
- Bottlenecks

Figure 8: Washington's top 10 truck bottleneck locations



2026 RTP – Existing Freight Conditions – Truck Parking

Truck Parking

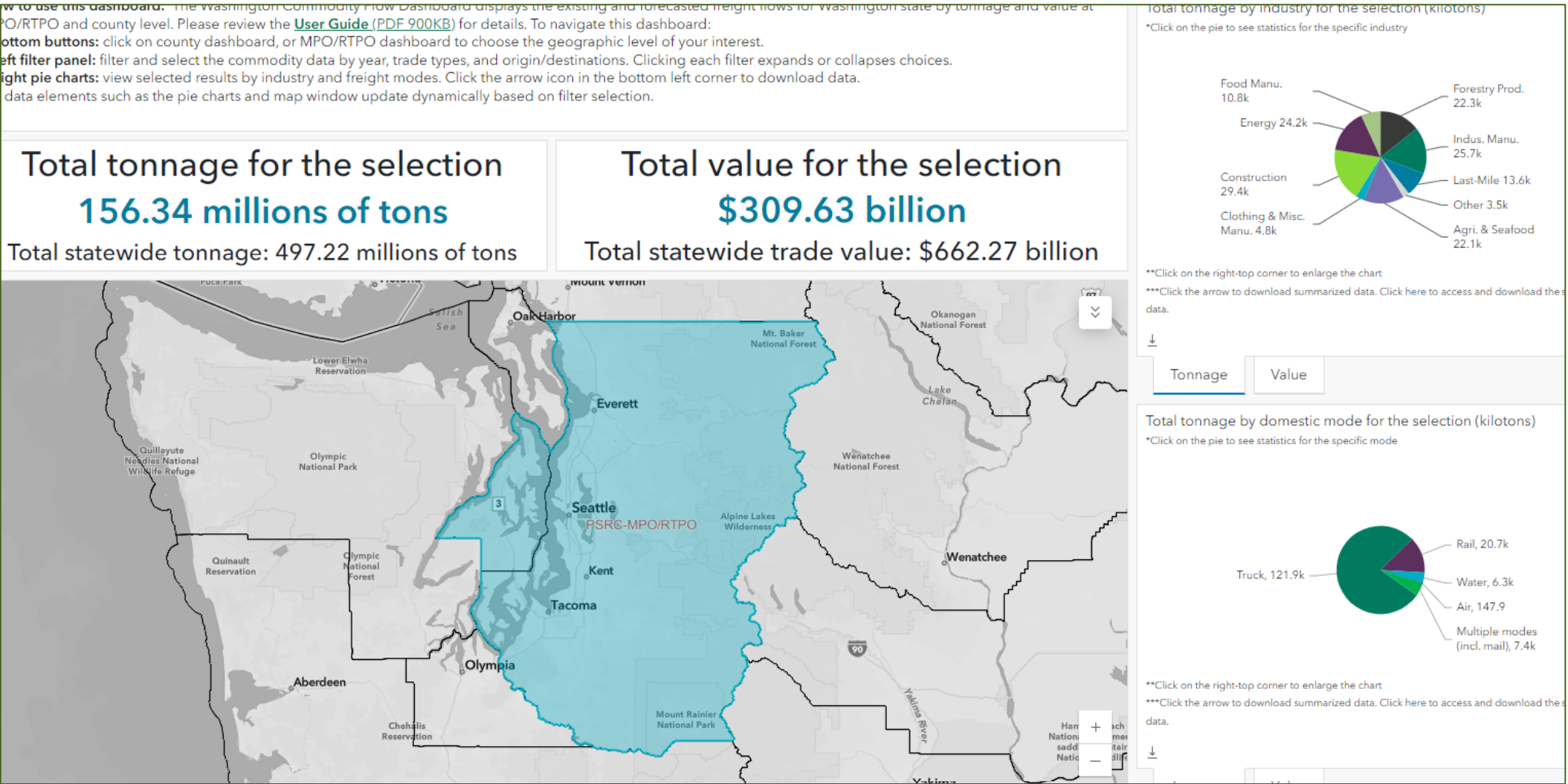


- Importance of providing parking
- Why supply needs to be increased
- 2024 Implementation Plan priorities in the region



2026 RTP – Existing Freight Conditions – Commodity Flows

WSDOT Commodity Flow Dashboard



2025 FGTS Timeline

February 10	PSRC sent initial FGTS data call to Cities and Ports in King, Pierce and Snohomish counties
February 20	WSDOT webinar to provide guidance about the FGTS data collection process
May 9	Completed FGTS data forms due to PSRC by 11:59 p.m.
June 13	PSRC sends FGTS submittal package to WSDOT

