

Government Relations Updates

Executive Board

February 27, 2025

Updated
as of
2/2/2025



Puget Sound Regional Council



We are leaders in the region to realize equity for all. Diversity, racial equity and inclusion are integrated into how we carry out all our work.

psrc.org/equity

2025 State Legislative Session

- 2,126 bills introduced
- Policy cut off Feb 21
- Fiscal cut off Feb 28
- Next revenue forecast March 18



Geoduck vs. Razor



No state
clam...

2025 Legislative Session Budget Outlook



- Operating budget deficit of \$12 billion
- Transportation budget deficit of \$8 billion, \$1.2 billion in FY 25–27
- Governor Ferguson state agency budget reductions 2/27 [press event](#)
- Lawsuits and tort claims
- Federal Funds ~ 30% of state budget
- New revenue being discussed by legislature
- [House Democrats: WA Budget Cuts](#)

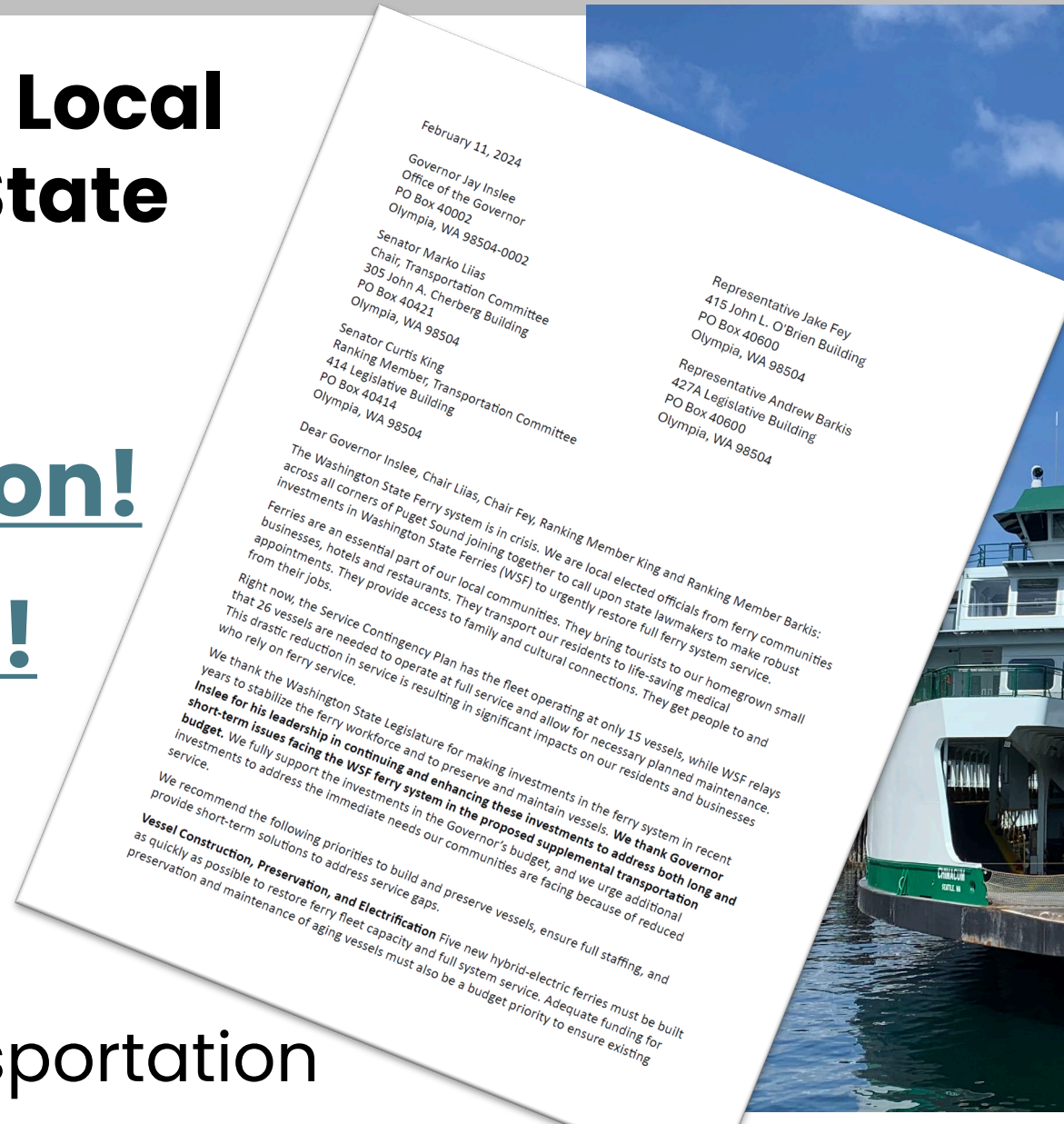


Washington State Ferries

Fund Our Ferries Local Elected Official State Sign-on Letters

Federal Sign-on! State Sign-on!

Next Meeting:
March 14, 10-11:30
Senator Liias
Chair, Senate Transportation



Road Usage Charge



- [HB 1921](#) (Fey) / [SB 5726](#) (Ramos)
- Phased Approach
- 2.6 cents per mile, increased over time linked to fuel tax
- Odometer reporting
- Use restricted to maintenance and preservation protected by the 18th amendment
- 10% road usage assessment to support alternative transportation



Transportation Project Delivery

HB 1902 (Richards) **Streamlining Permitting for Transportation Projects**

Requires WSDOT, in consultation with Dept. of Ecology, to convene work group to develop recommendations to streamline permitting of transportation projects.



Traffic Safety



Impaired Driving SB 5067 (Lovick)

- Lowers the legal blood alcohol concentration (BAC) limit from 0.08 to 0.05.
- Establishes stricter penalties for DUI offenses.



Housing Stability

Rent Stabilization

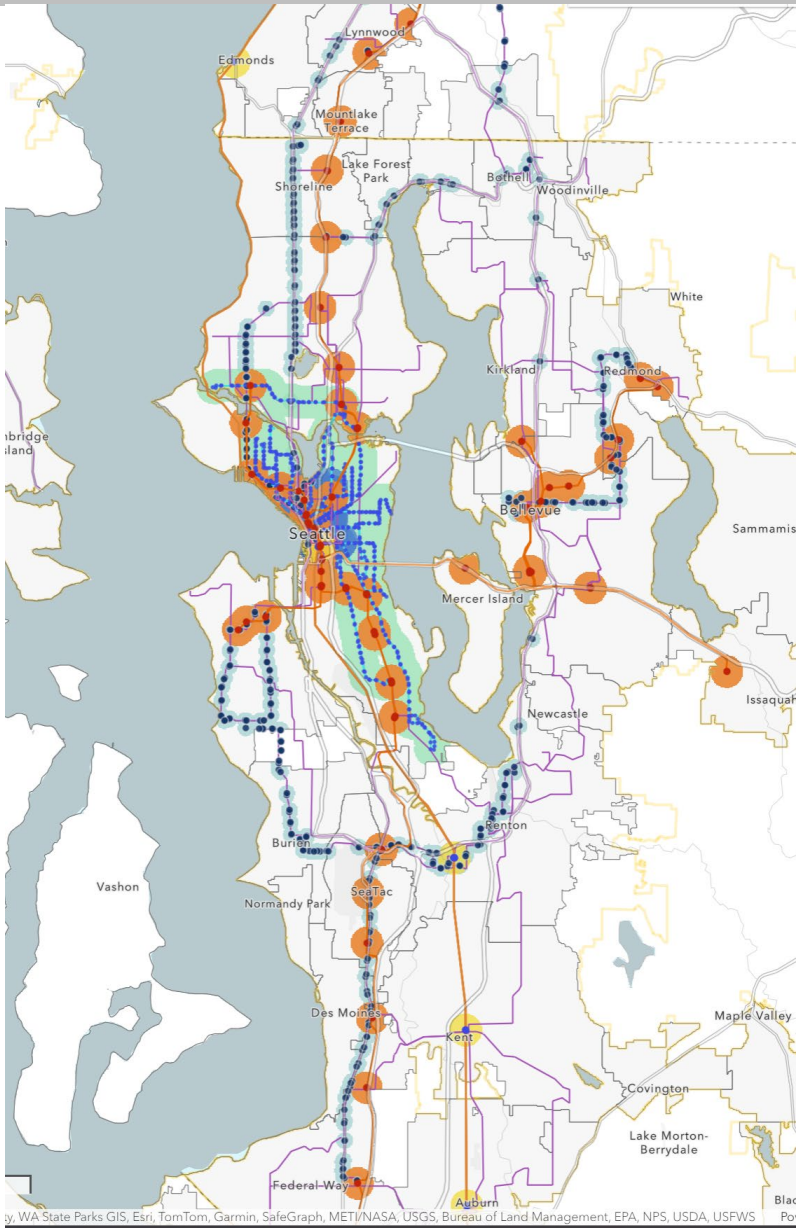
[HB 1217](#) (Alvarado) / [SB 5222](#) (Trudeau)

Limits rent increases to no more than 7 percent per year during

- Requires 6 months' notice for a rent increase of 3 percent or more
- Establishes fees count as rent for the purposes of calculating an increase
- Limits move-in fees to the equivalent of one month's rent or less
- Limits late fees to no more than 1.5% of the monthly rent



Housing Supply: Transit-Oriented Development



Promoting Transit Oriented Housing Development

HB 1491 (Reed)

Creates density requirement in station areas

- 3.5 FAR w/in .5m of rail
- 2.5 FAR w/in .25m of BRT

Promoting Transit Oriented Development

SB 5604 (Lias)

Allows jurisdictions to create MFTE program with 20-year tax exemption in station areas requiring 20% of units in building to be affordable for 50 years.



Housing Supply: Parking Requirements

[HB 1299](#) (Peterson) / [SB 5184](#) (Bateman)

Minimum Parking Requirements

Prohibits cities and counties from requiring:

- More than 0.5 parking space per residential unit
- More than 1 parking space per 1000 feet of commercial space
- Eliminates minimum parking requirements for several building types including affordable & senior housing and homes < 1200 sq ft



Housing Research Center



- [Sign on Letter](#)
- Budget ask:
\$250,000 FY 2025
and \$750,000 FY
2026 and each
subsequent year
- [One-pager](#)

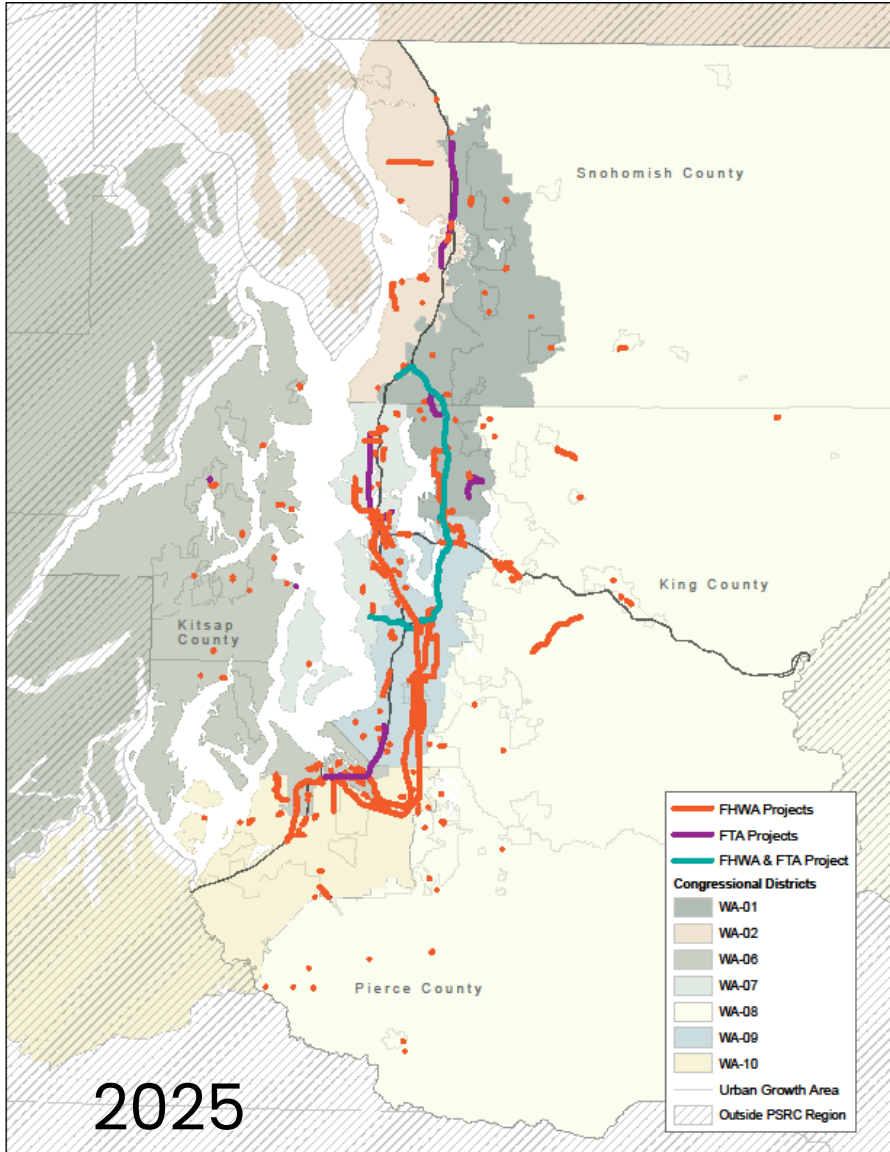
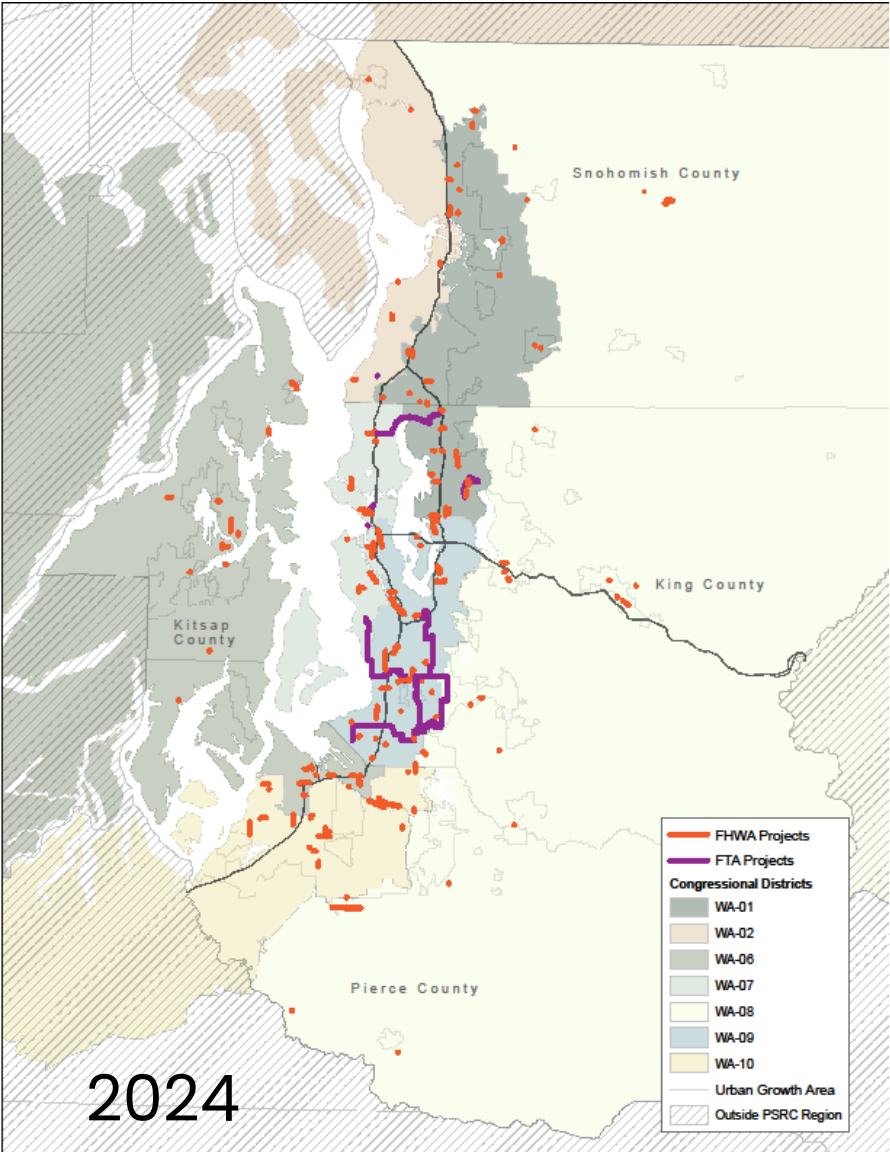


Federal Visits

- National Association of Regional Councils
- 9 congressional staff visits
- Senate Environment & Public Works Committee and House Transportation & Infrastructure



Federal Updates: PSRC Regional Impact



\$2.2 billion
in federal
funds for
projects
obligated
2024-2025



Holland & Knight



Leslie Pollner
Senior Policy Advisor



Federal Resources

- [Video: AWC/PSRC Federal Funding Update](#)
- [Executive Order Summaries from Holland & Knight](#)
- [PSRC News Post](#)





Thank You!

Robin Koskey

Director, Government Relations and Communications
Rkoskey@psrc.org



Puget Sound Regional Council