

Transit



Highlights of the Transit System today

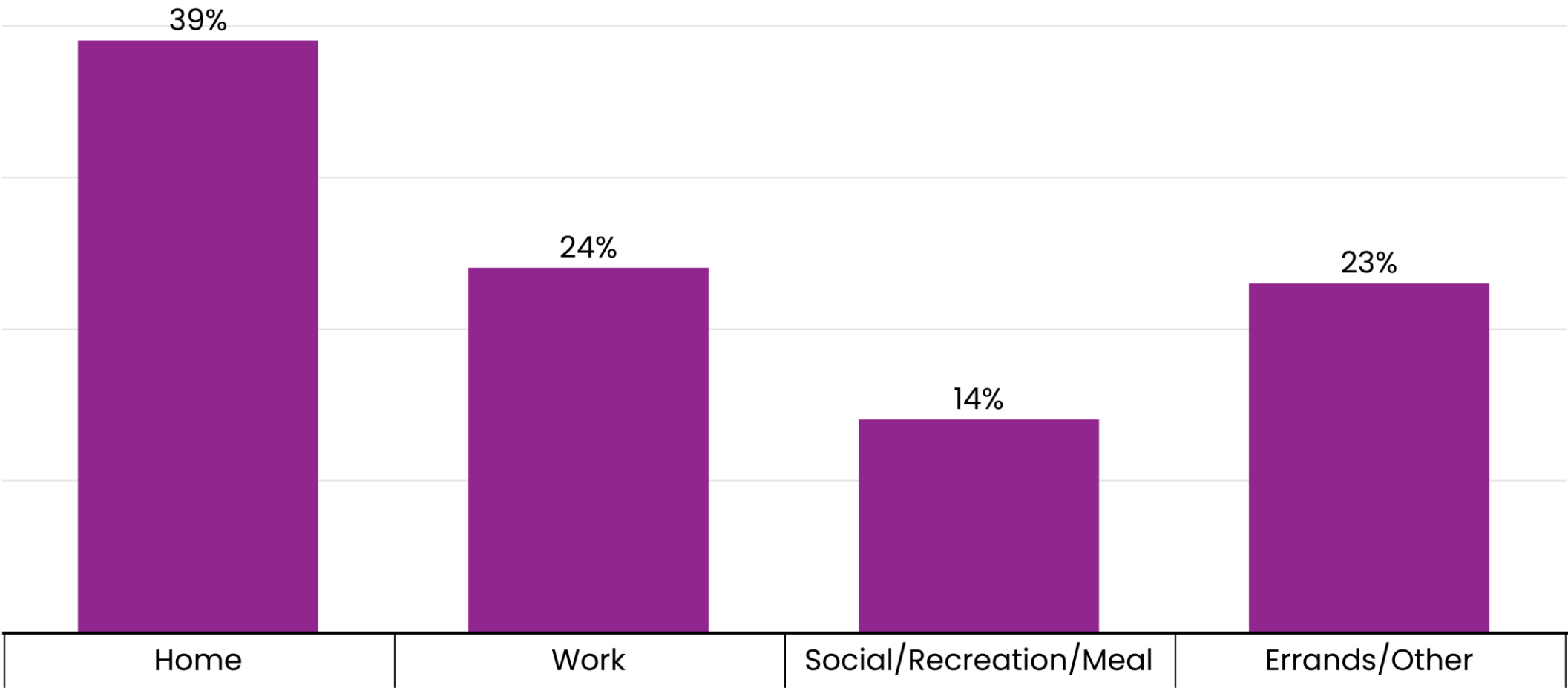
Transit is experiencing:

- Continued recovery from the pandemic
 - 75% of 2019 ridership
 - 90% of 2019 service provided
- People rely upon transit for a variety of needs, peak hour commuting is a smaller market today.
- Link light rail expansion has helped fuel ridership recovery for that mode.



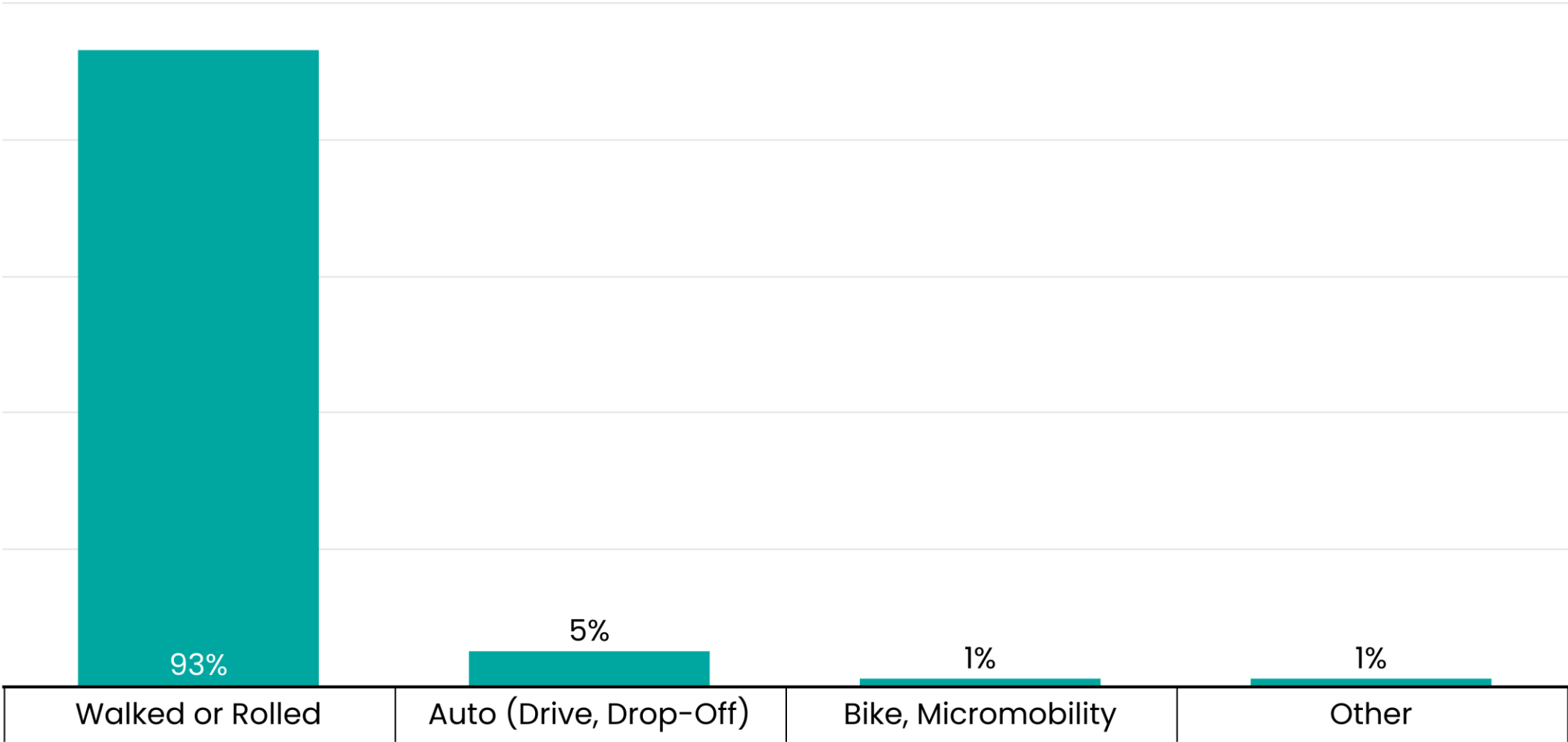
Transit riders use the system for many purposes

Trip Purposes for Transit Riders: Spring 2023



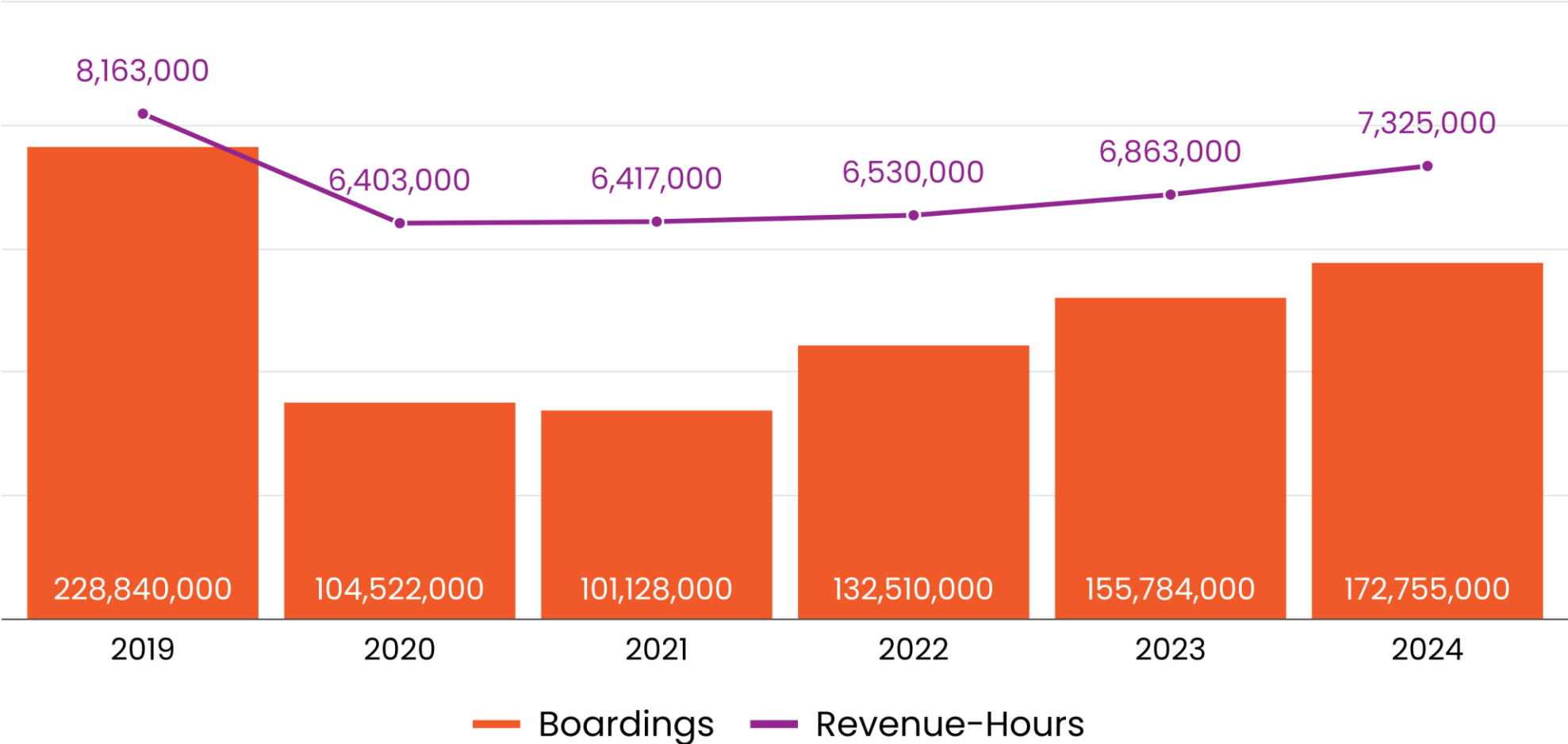
Most transit riders walk or roll to transit

Access Mode for Transit Riders: Spring 2023



2024 Boardings were 75% of 2019 levels with 90% of the hours

Annual Transit Boardings & Revenue-Hours



The RTP will analyze gaps in areas with supportive densities

Transit Service & Densities

Density	Frequency & Span	Transit Service
at least 7 people + jobs per acre	Service with at least 2 trips per hour between 6am and 8pm	Local Transit
at least 15 people + jobs per acre	Service with at least 3 trips per hour between 4am and 10pm	All Day Service
at least 25 people + jobs per acre	Service with at least 5 trips per hour between 6am and 6pm	Frequent Service
at least 40 people + jobs per acre	BRT, Light Rail, Commuter Rail or Ferry	High-Capacity Transit

All analysis will include details for:

- Equity Focus Areas
- Counties
- Regional Geography
- Regional Centers



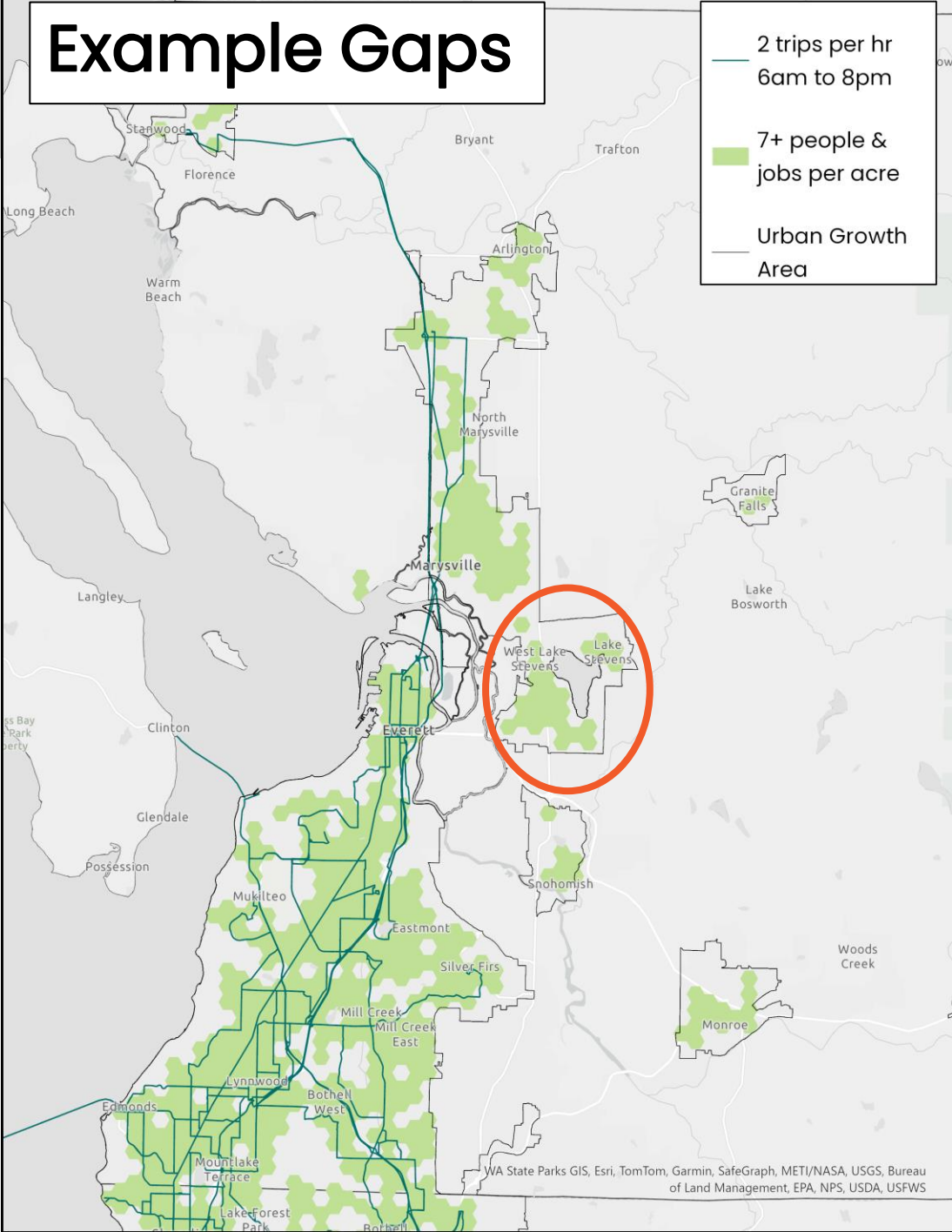
Gaps for Local Transit: 2024

Access to Local Transit Service: 2024

Density	# of People in these areas without service
People in areas with 7 or more people & jobs per acre with service with at least 2 trips per hour between 6am and 8pm (Local Transit)	524,000 (18%)

Source: OFM Small Area Estimates, ACS 5yr Data & Fall 2024 GTFS by Agency

The Equity Focus analysis highlighted larger gaps in areas with higher shares of households with children under 18



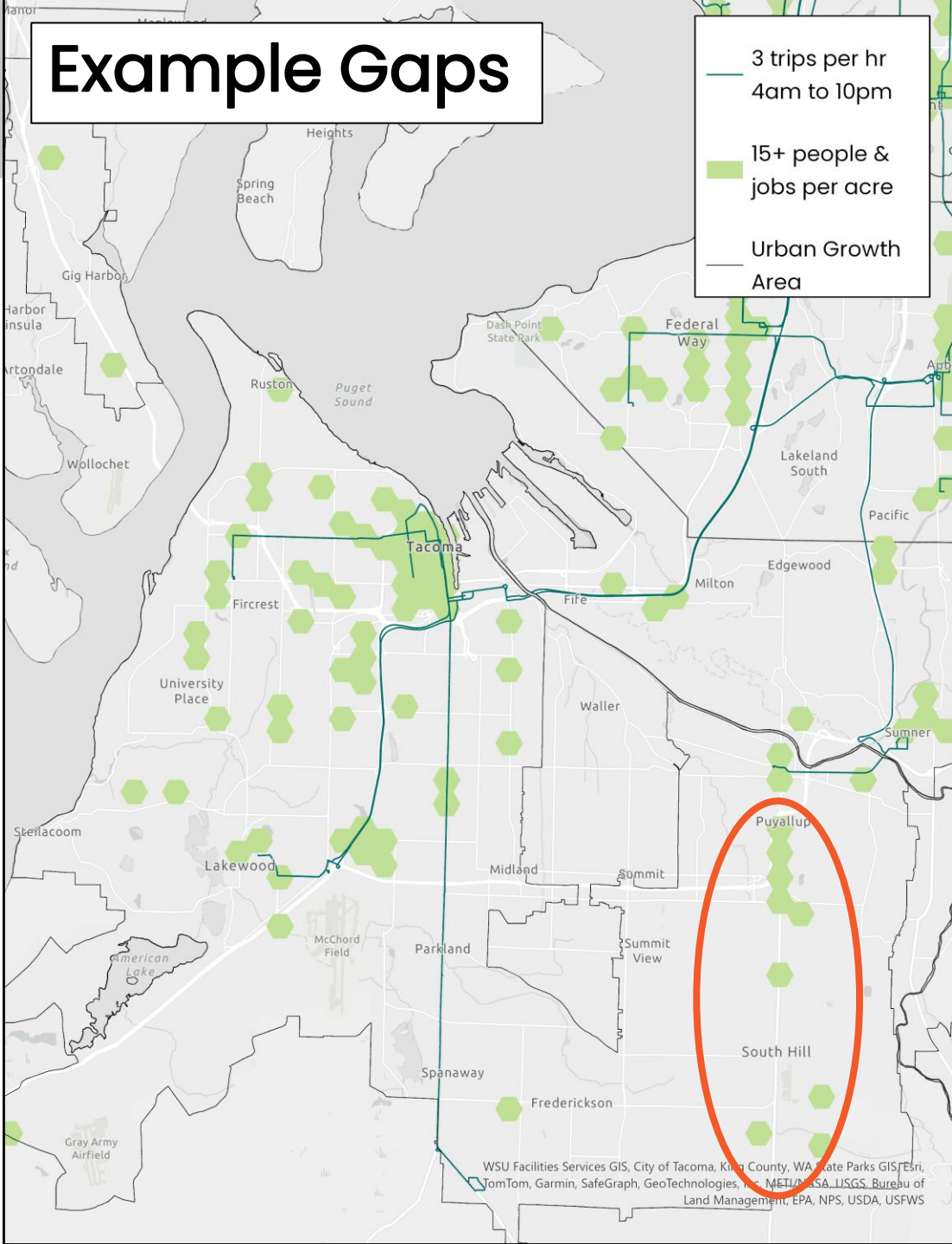
Gaps for All Day Transit: 2024

Access to All Day Transit Service: 2024

Density	# of People in these areas without service
People in areas with 15 or more people & jobs per acre with service with at least 3 trips per hour between 4am and 10pm (All Day Transit)	234,000 (18%)

Source: OFM Small Area Estimates, ACS 5yr Data & Fall 2024 GTFS by Agency

The Equity Focus analysis highlighted smaller gaps in areas with higher shares of households with Limited English proficiency



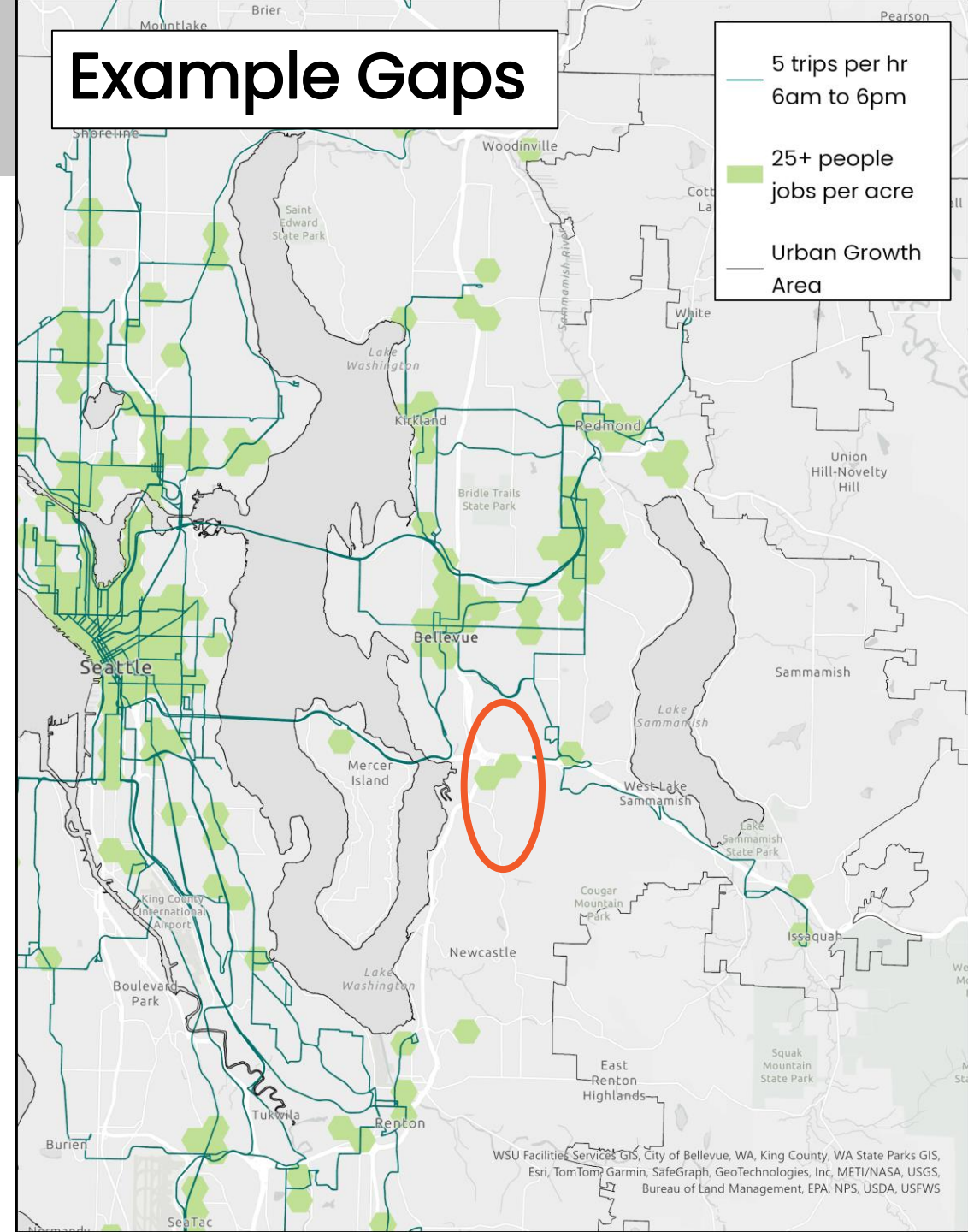
Gaps for Frequent Transit: 2024

Access to Frequent Transit Service: 2024

Density	# of People in these areas without service
People in areas with 25 or more people & jobs per acre with service with at least 5 trips per hour between 6am and 6pm (Frequent Transit)	42,000 (7%)

Source: OFM Small Area Estimates, ACS 5yr Data & Fall 2024 GTFS by Agency

The Equity Focus analysis highlighted larger gaps in areas with higher shares of households with Lower Incomes



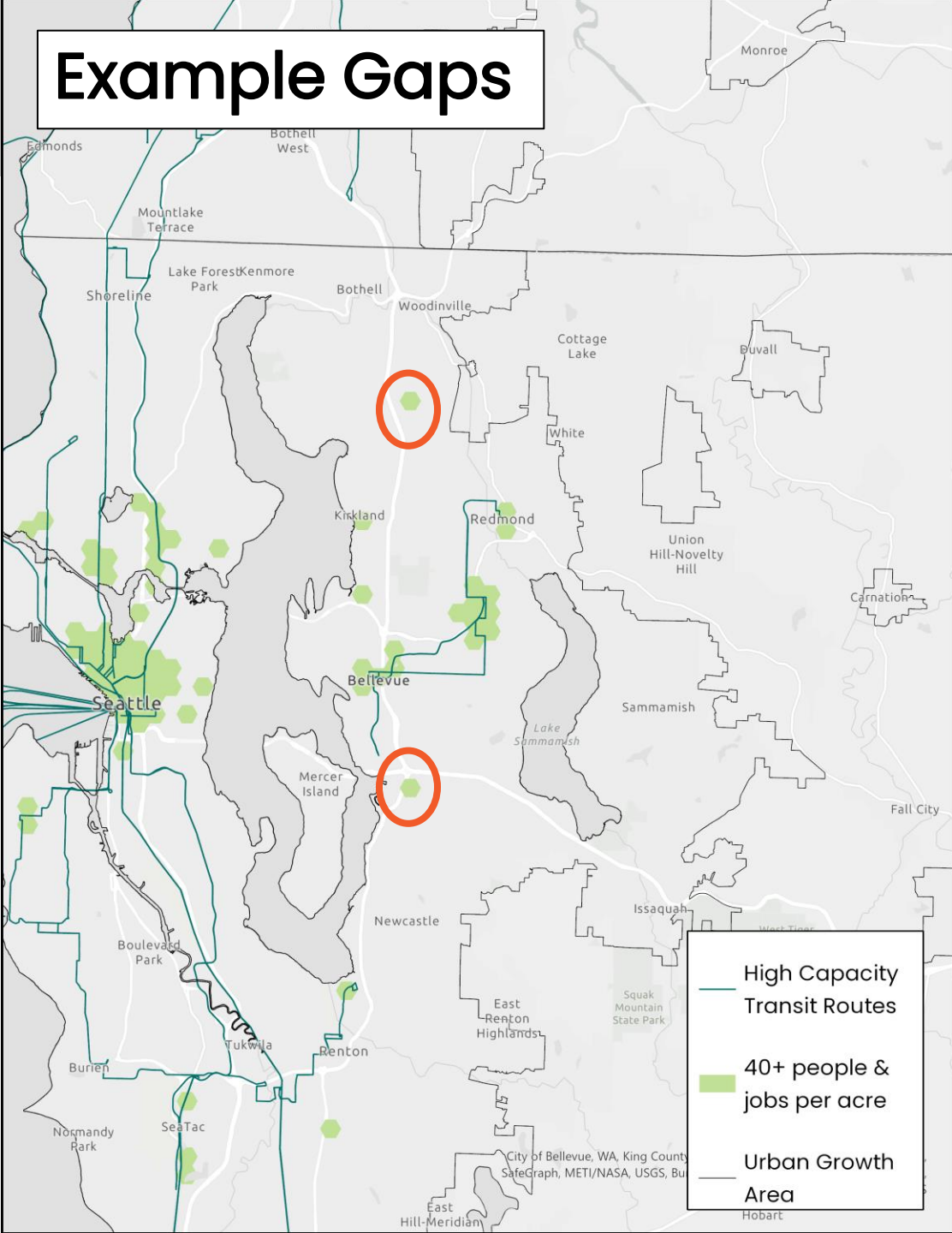
Gaps for HCT Transit: 2024

Access to HCT Transit Service: 2024

Density	# of People in these areas without service
People in areas with 40 or more people & jobs per acre with BRT, Light Rail, Streetcar, Commuter Rail or Ferry (High-Capacity Transit)	38,000 (12%)

Source: OFM Small Area Estimates, ACS 5yr Data & Fall 2024 GTFS by Agency

The Equity Focus analysis highlighted larger gaps in areas with higher shares of households with Older Adults



Current **Transit** System Summary

- Transit ridership is recovering
- People take transit for more reasons than just to get to work
- There are gaps for all span & frequency combinations, based on where people and jobs are today
- Places with a higher share of people under 18 tend to have a larger gap than the entire region

