

# Current Transportation System: Coordinated Mobility

Coordinated Mobility and Accessibility Committee | March 19, 2025



Puget Sound Regional Council



*We are leaders in the region to realize equity for all. Diversity, racial equity and inclusion are integrated into how we carry out all our work.*

[psrc.org/equity](https://psrc.org/equity)



# Coordinated Mobility Plan's Priority Populations

**Individuals with mobility and accessibility needs due to their age, income, or ability including:**

- Older Adults
- Youth
- People with Low Incomes
- People with Disabilities
- People with Limited English Proficiency



# Transportation Options



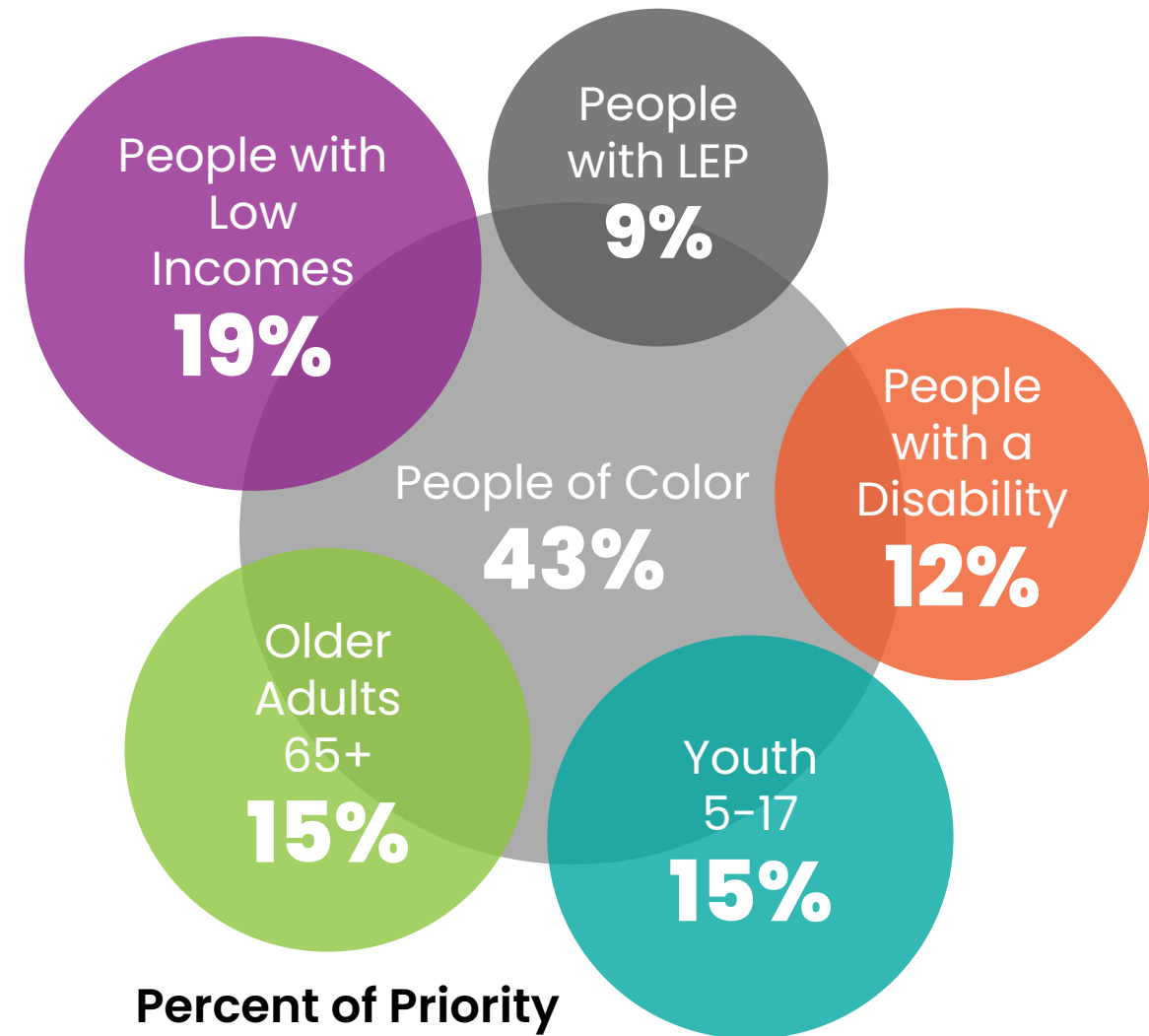


# Specialized Transportation



# A large percentage of our region's population falls into at least one of the priority populations.

- The number of **older adults, people with disabilities, and people with limited English proficiency** is growing faster than the overall population.
- About **1 in 5 people** in our region have **low incomes**.



**Percent of Priority  
Percentage Breakdowns,  
2023**



# Our region is aging and facing more accessibility needs.

- Across the region, about **1 in 3 adults aged 65 and older have a disability**.
  - For those over 85, 71% have at least one disability.
- By 2050, **1 out of every 5 people** in the region will be **65 or older**.





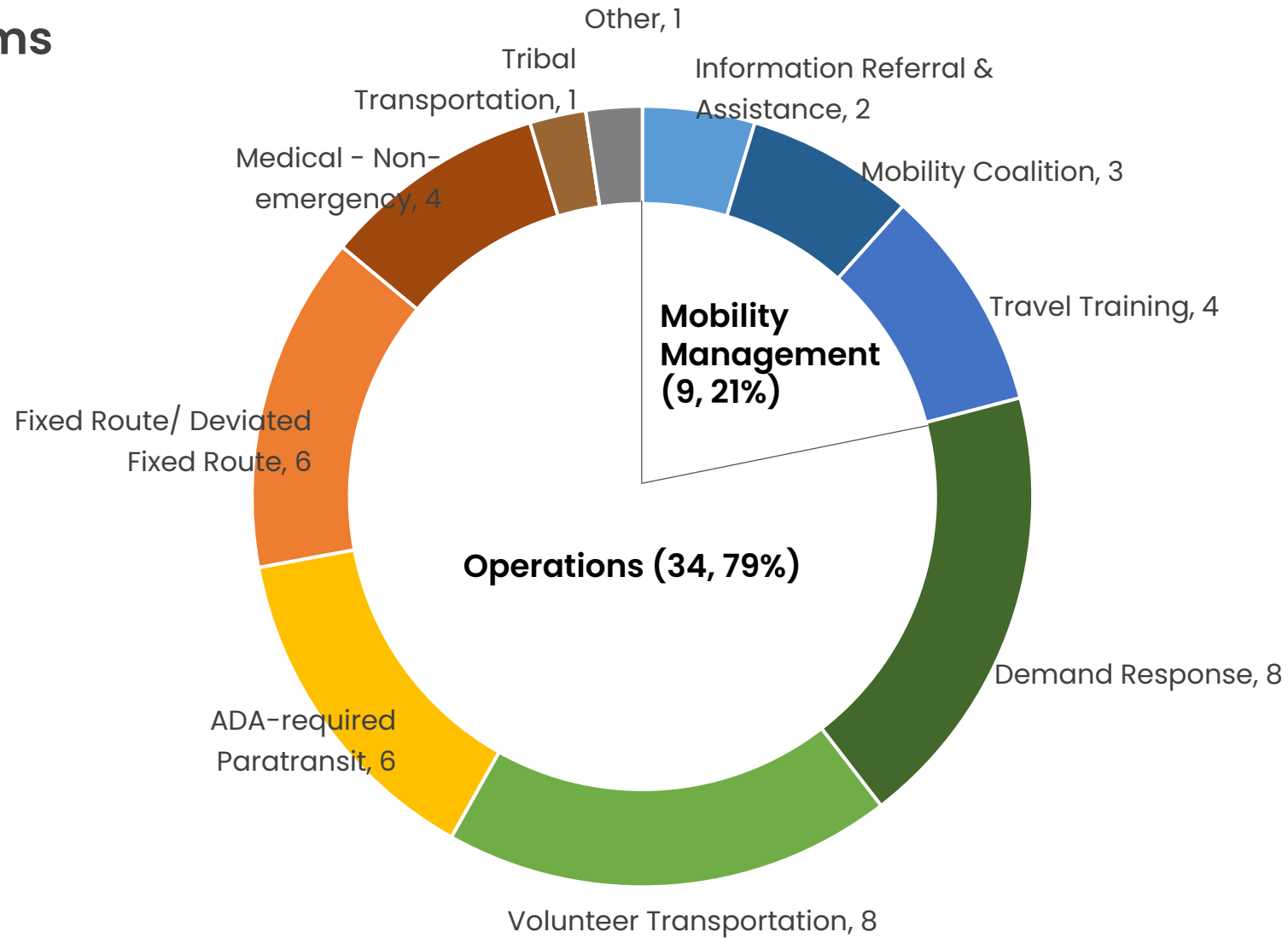
# 2024 Coordinated Mobility Plan Inventory Survey

- **Purpose:** Inform the next Coordinated Mobility Plan
- **Data Collected:**
  - Basic program information
  - Service areas
  - Performance data
  - Annual program cost
  - Top trip origins and destinations



# Transportation Services

Total: 44 programs



Source: Coordinated Mobility Plan Survey





# Key Destinations

The survey also identified key destinations:

1. Medical facilities
2. Grocery stores & foodbanks
3. Residences
4. Employment/Educational
5. Transit stations
6. Recreational & Parks

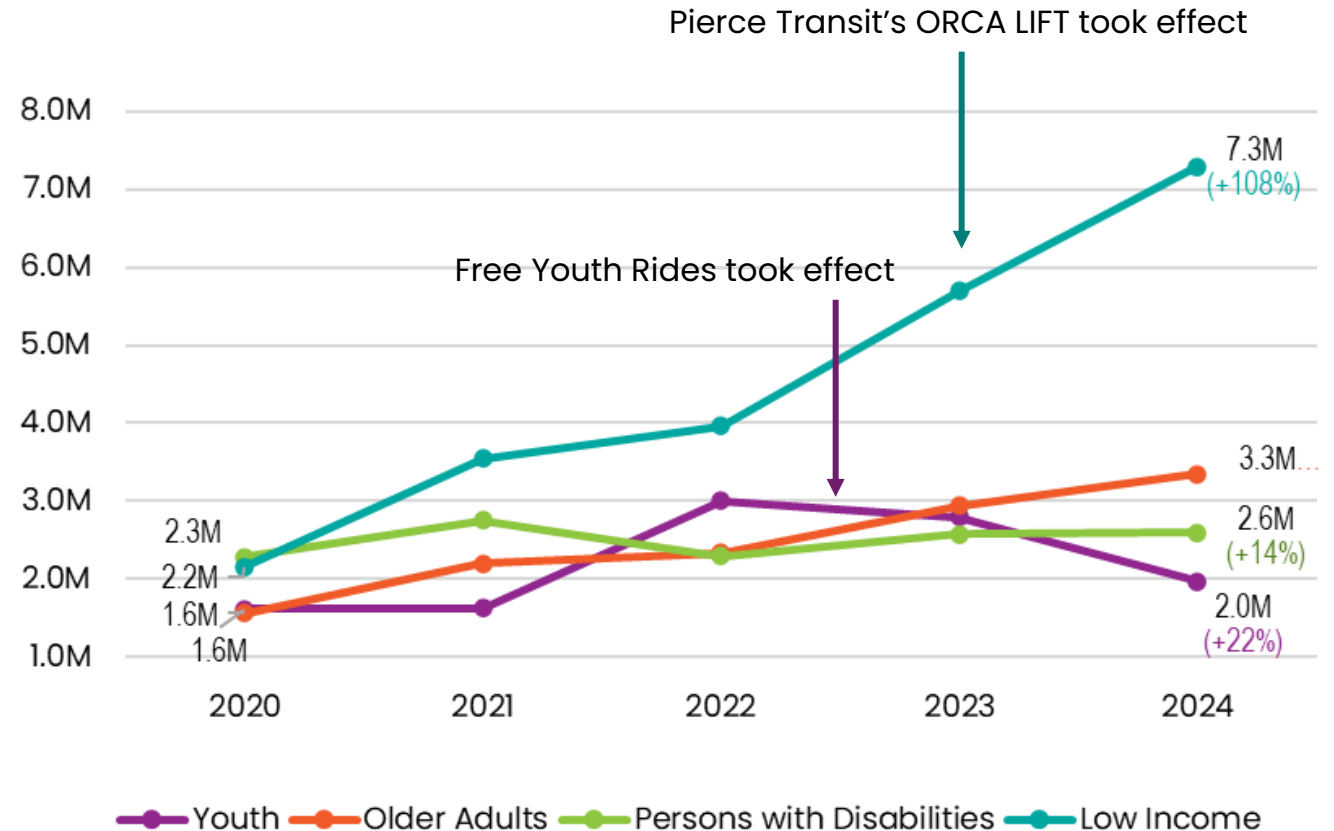
Source: Coordinated Mobility Plan Survey



# Highlights of the Transit Usage by Priority Populations

ORCA Reduced-fare Programs make travel more accessible for priority populations:

- **ORCA LIFT** – for low-income households
- **Regional Reduced Fare Permit (RRFP)** – for older adults and people with disabilities
- **Free ORCA Youth Pass**



Source: ORCA

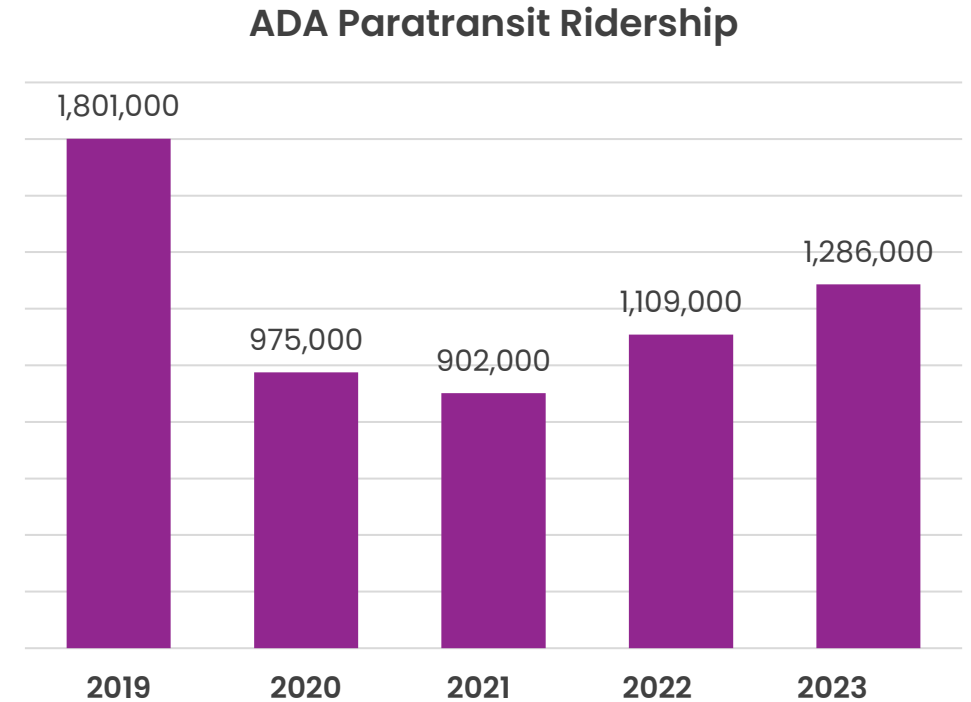
NOTE: Since many transit agencies allow youth riders to use their student ID as proof of fare when boarding, ORCA data may not fully capture actual youth ridership.





# Highlights of the ADA-Complementary Paratransit

- Ridership has been steadily rebounding from the pandemic:
  - 71% of 2019 paratransit ridership
- Paratransit operation costs increased by 40% compared to 2019.

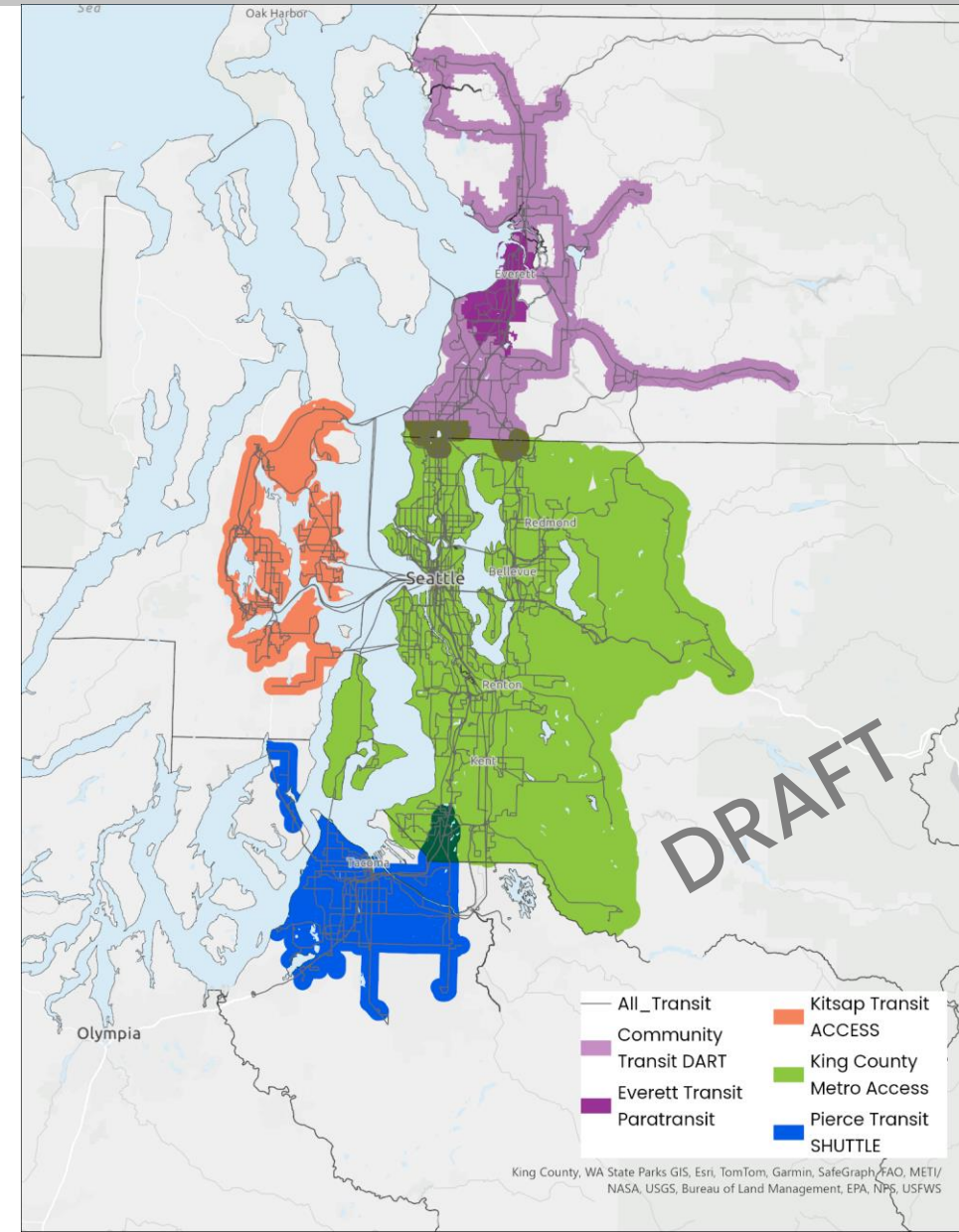


Source: Transit Agencies



# Highlights of the ADA-Complementary Paratransit

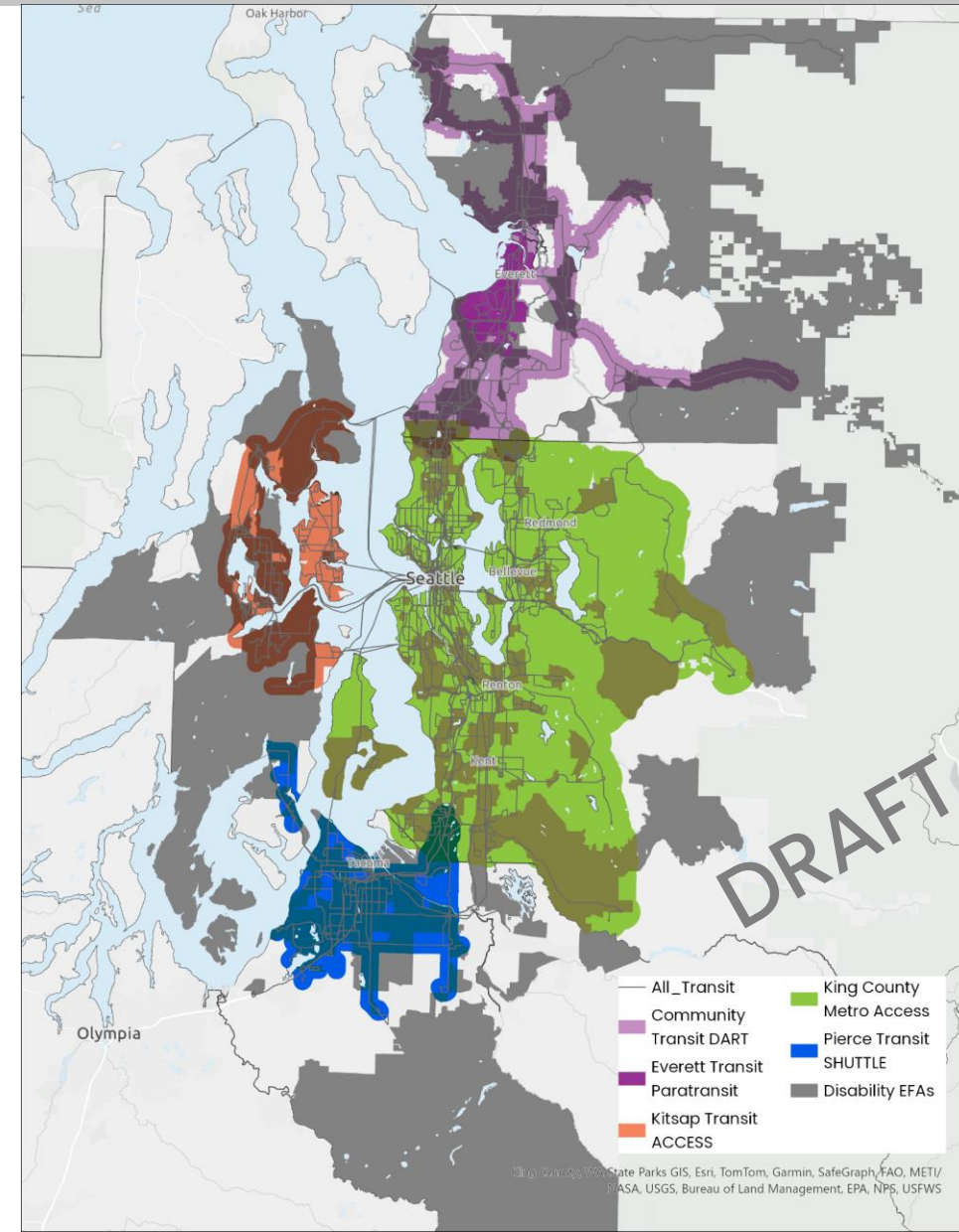
- Except for Kitsap Transit, most providers have overlapping service areas but use **different eligibility screening procedures**.
- Agencies also limit paratransit usage within the origin county.





# Highlights of the ADA-Complementary Paratransit

- Gaps in service coverage:
  - 13% of people with disabilities (64,500 individuals) live outside of ADA paratransit boundaries.
- Even within the service area, paratransit may not fully meet all travel needs.

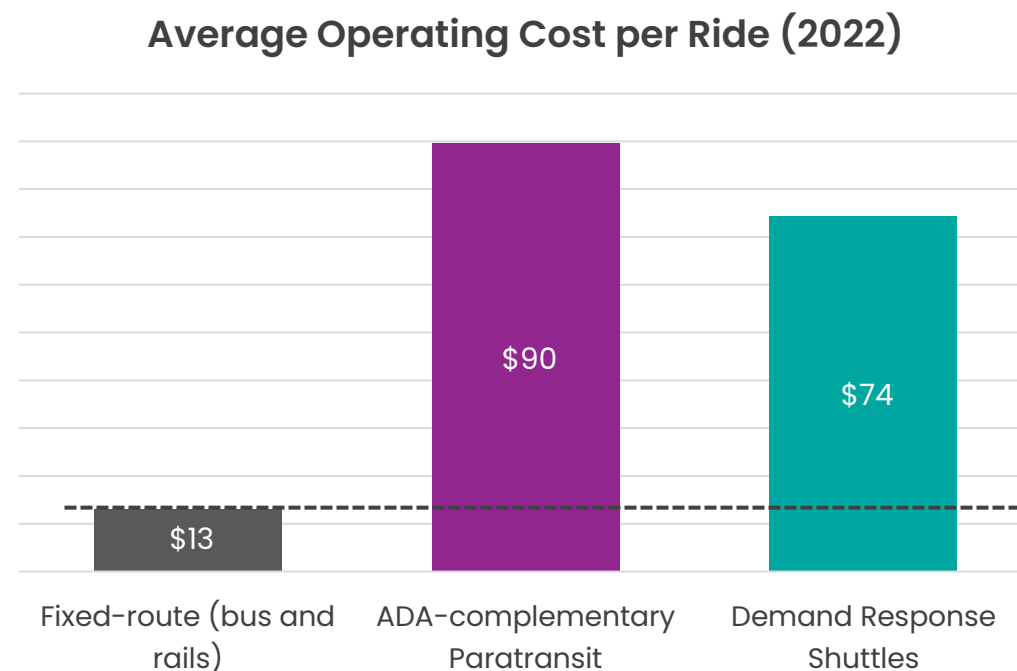


# Highlights of the Demand Response Shuttles

**Demand response shuttles serve riders not well served at times or locations by ADA-complementary paratransit.**

## **Examples:**

- Transportation Assistance Program
- Snoqualmie Valley Transportation
- Hyde Shuttle
- Beyond the Borders

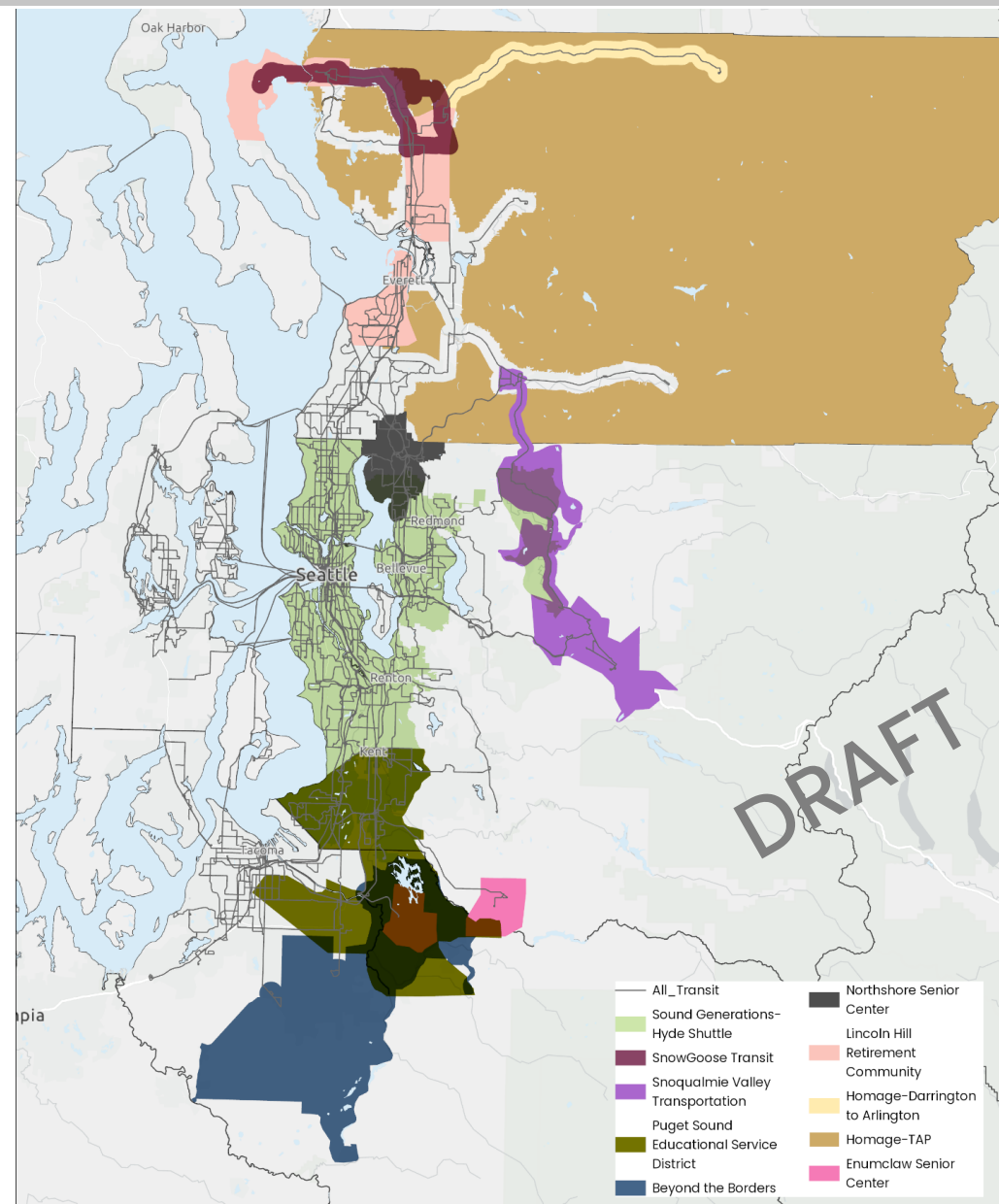




# Highlights of the Demand Response Shuttles

**PSRC used GTFS-flex files to visualize coverage and overlaps of demand response shuttle programs.**

NOTE: Volunteer transportation and non-emergency medical transportation programs are not shown on the map.





# Thank You!



Puget Sound Regional Council