

# Addressing Priority Population's Transportation Needs in the Regional Transportation Plan

CMAC • March 19, 2025



*We are leaders in the region to realize equity for all. Diversity, racial equity and inclusion are integrated into how we carry out all our work.*

[psrc.org/equity](https://psrc.org/equity)



# Today

## **Connect Coordinated Mobility Plan's focus areas with other RTP topics, including:**

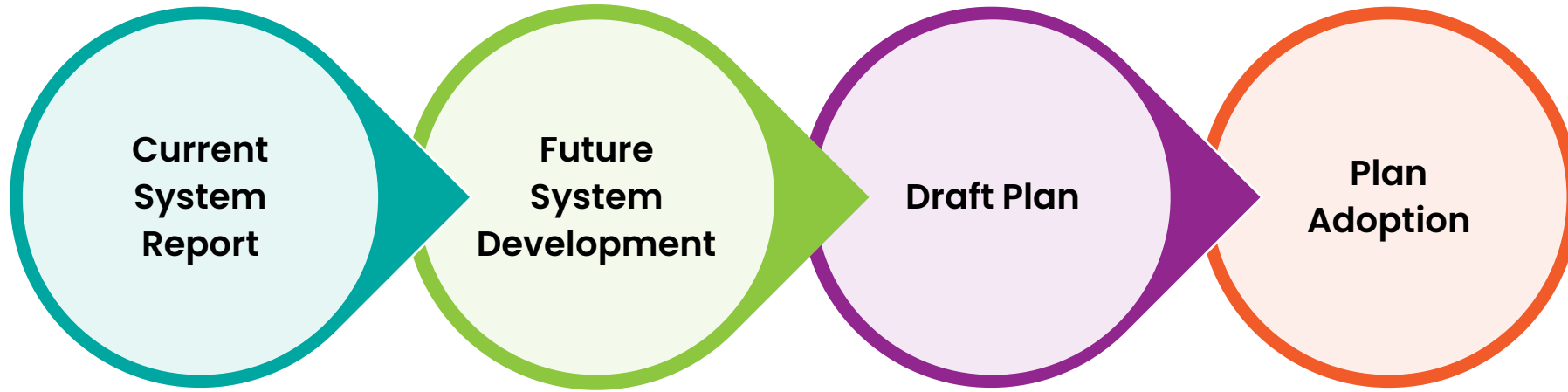
- Transit
- Mobility On Demand
- Walking and Bicycling



# Regional Transportation Plan Update Process

2025

2026



**Community Engagement Informs the Plan**  
Transportation Needs & Priorities



# Current Transportation System

## **Deeper dive into the current system:**

- Transit – including ferries, specialized transportation, MOD, TDM, etc.
- Pedestrian and bicycle
- Streets and highways – including ITS
- Freight
- Maintenance and preservation

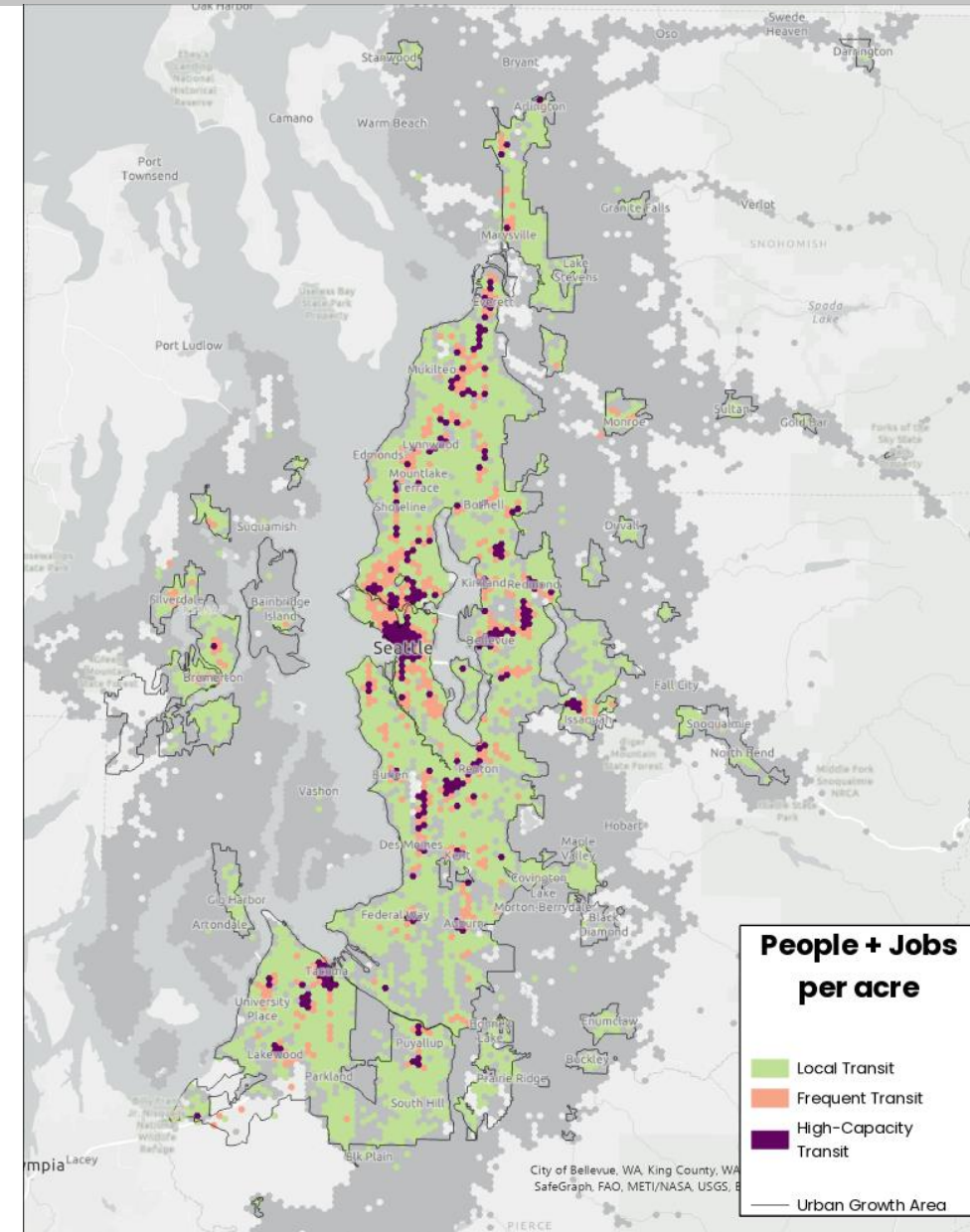




# Current Transportation System

## The Regional Transportation Plan will:

- Look at where people & jobs are today and planned for 2050 – at varying densities.
- Identify potential gaps in the transportation system supporting those places.



# Current Transportation System – Transit Example

## Transit Service & Densities

Density	Frequency & Span	Transit Service
at least 7 people + jobs per acre	Service with at least 2 trips per hour between 6am and 8pm	Local Transit
at least 15 people + jobs per acre	Service with at least 3 trips per hour between 5 am and 10pm	All Day Service
at least 25 people + jobs per acre	Service with at least 4 trips per hour between 6am and 6pm	Frequent Service
at least 40 people + jobs per acre	BRT, Light Rail, Commuter Rail or Ferry	High-Capacity Transit

All analysis will include details for:

- Equity Focus Areas
- Counties
- Regional Geography
- Regional Centers



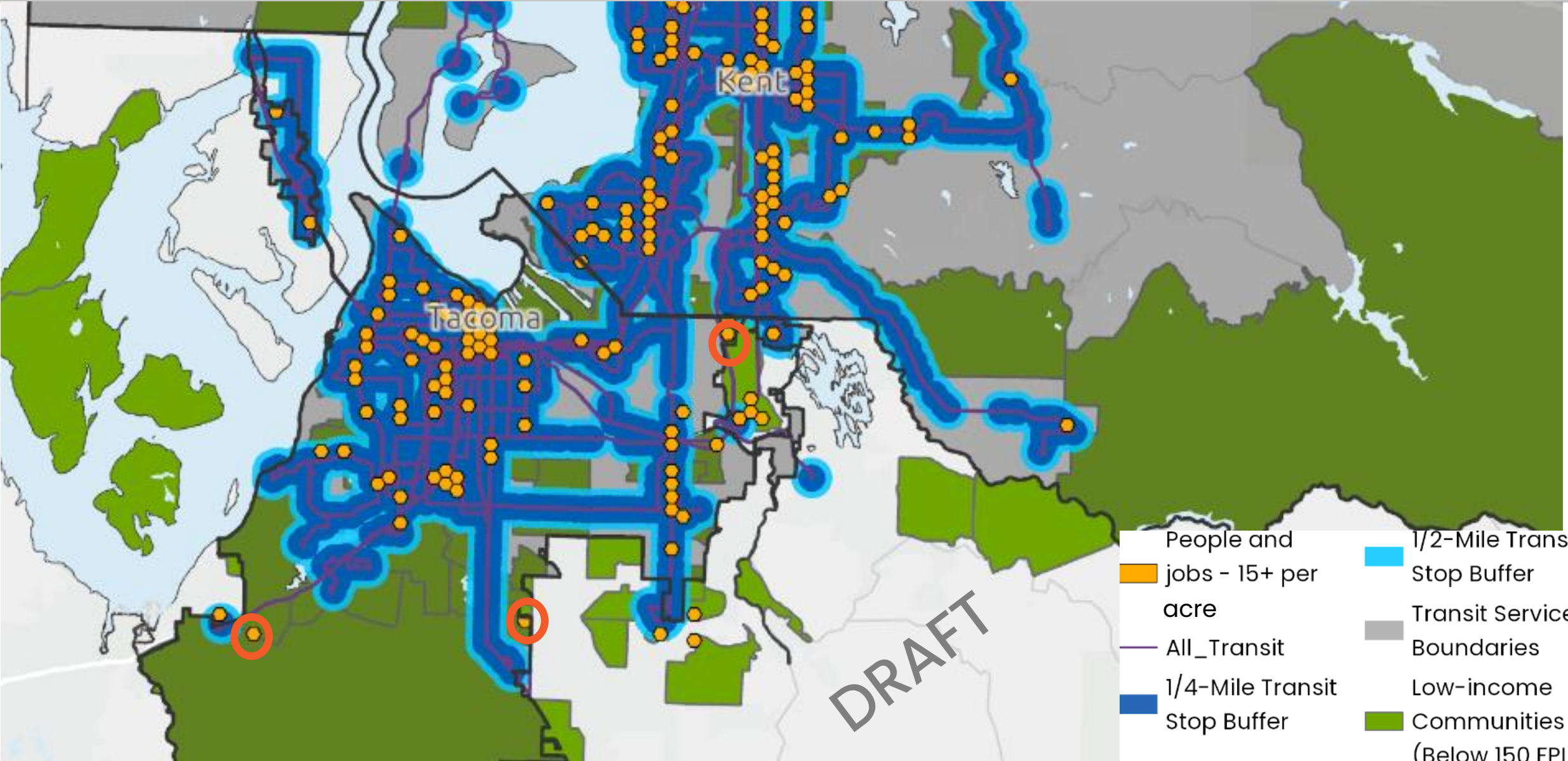
# Current Transportation System – Transit Example

- **Low-income corridor:** Highlight corridors and transportation needs for people with low incomes to address equity considerations for Jobs Access Reverse Commute (JARC) funding of transit service enhancements.
- **Excerpt from Circular:** Projects funded as “job access and reverse commute projects” must be designed to provide transportation for welfare recipients and eligible low-income individuals.





# Current Transportation System – Transit Example





# Current Transportation System – Transit Access



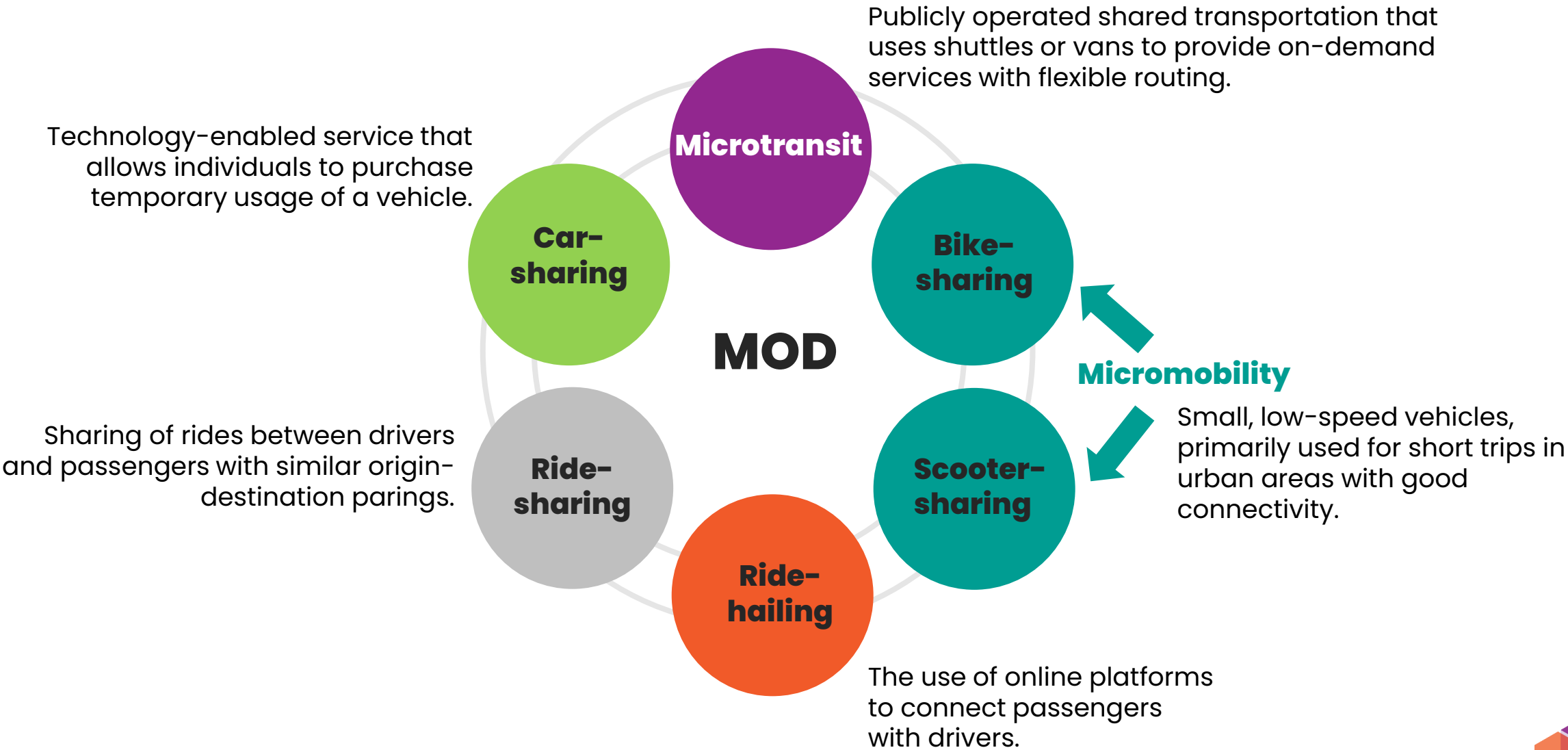
“...Develop and update tools and resources to **help identify where access to transit can be improved**, particularly for bicyclists and pedestrians. ”

## Transit access in RTP:

- Transit-Oriented Development (TOD)
- Walk, Bike, and Roll
- Transit Service
- Drop-off/Pick-up Modes
- Parking



# Current Transportation System – Mobility on Demand

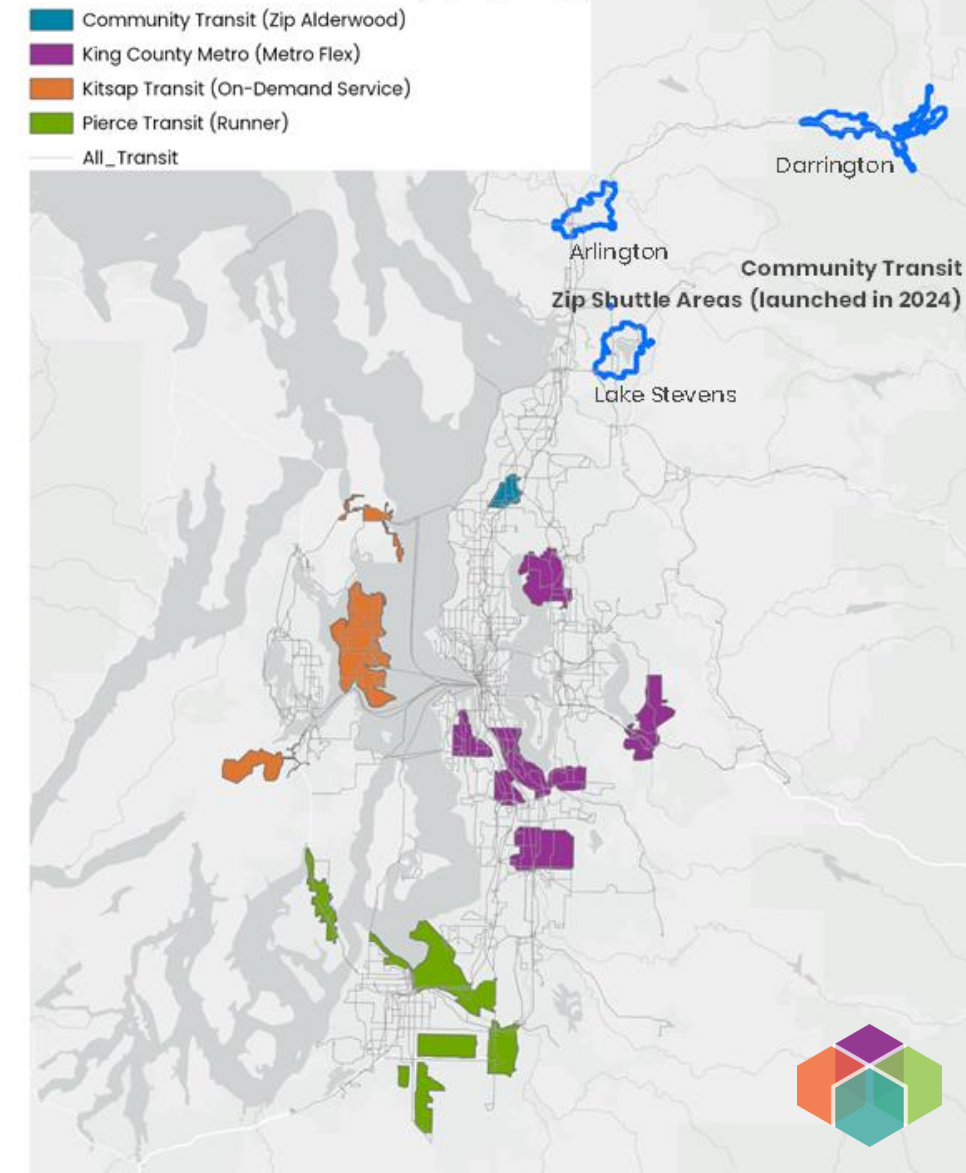




# Highlights of the Mobility On Demand Today

- MOD options are expanding to offer context-appropriate services.
- The average trip duration for **micromobility** ranges from 8 to 12 minutes, covering distances between 0.7 and 1.5 miles.
- Transit agencies across the region provide a variety of **microtransit** programs (see Map).
- **Car-sharing** services are available for those who need access to a vehicle.

Microtransit Service Areas (By Agency)



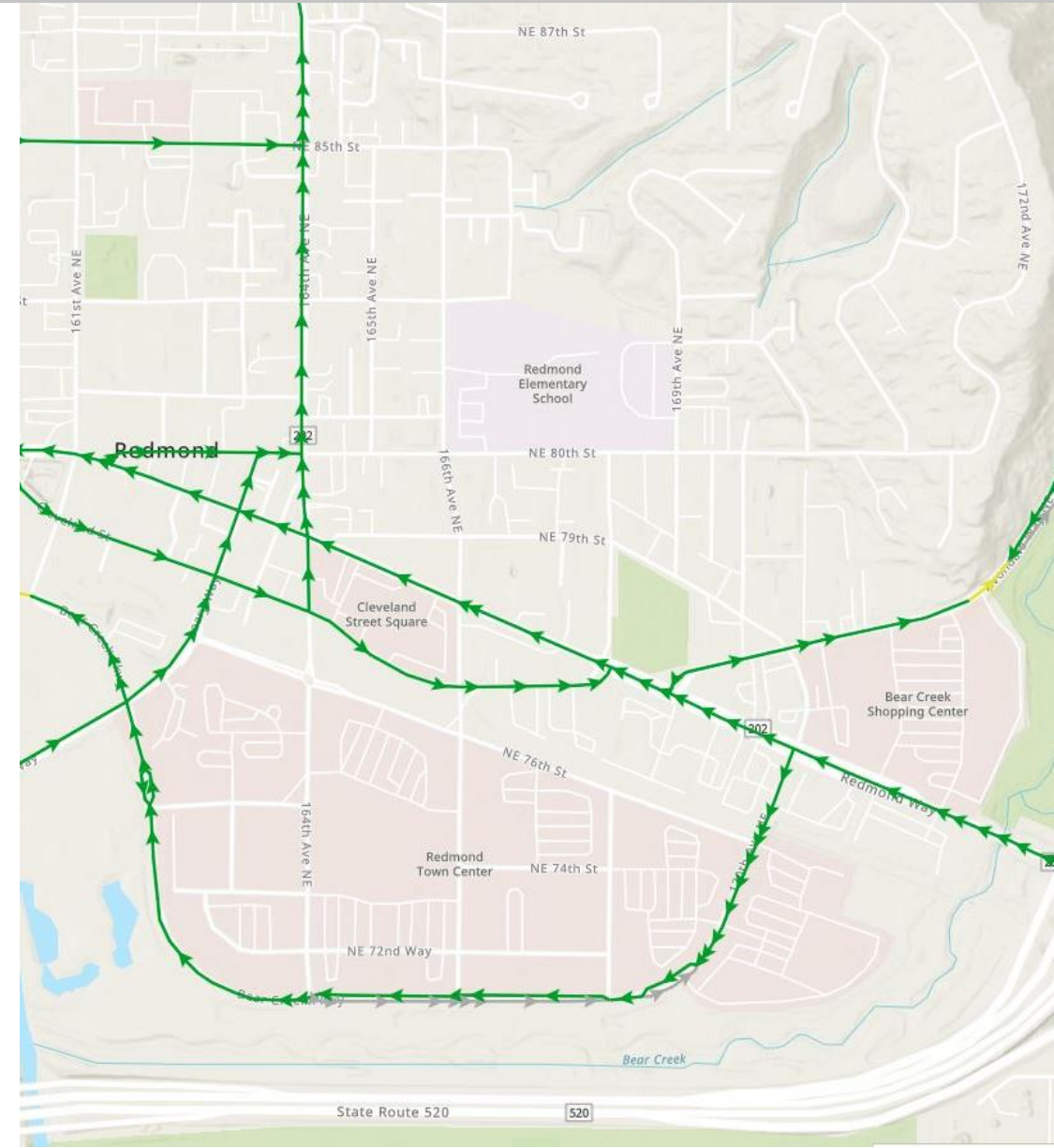
# Current Transportation System – Ped / Bike Example

## Ped/bike facility inventory data:

- ✓ Sidewalks/bicycle facilities on arterials:
  - Completeness,
  - Bicycle facility type
- ✓ Regional shared-use paths

## Data analysis:

- Summary Statistics
- Bicycle Level of Traffic Stress (LTS)
- Facility Gap Analysis






# Highlights of the Pedestrian/Bicycle System Today

- Over 85% of existing transit access is in the form of walking.
- Inventory found small increases in pedestrian and bicycle facilities from 2019 to 2023, as projects were completed.
- Analysis using safety data shows higher amounts of sidewalk coverage as compared to bicycle facilities.
- Emerging analysis of level of traffic stress of bicycle facilities.



# Schedule – Committee Engagement

 <b>May 21, 2025</b>	<ul style="list-style-type: none"><li>• <b>Workshop:</b> Development of Coordinated Mobility Plan's Transportation Needs (attend for engaged discussion)</li></ul>
<b>June 18, 2025</b> <b>(Special Meeting – mark your calendar)</b>	<ul style="list-style-type: none"><li>• <b>Workshop:</b> Coordinated Mobility Plan Prioritized Strategies – Part 1 (Develop draft strategies)</li></ul>
<b>July 16, 2025</b>	<ul style="list-style-type: none"><li>• <b>Workshop:</b> Coordinated Mobility Plan Prioritized Strategies – Part 2 (Assign priorities and refinement)</li></ul>
<b>September 17, 2025</b>	<ul style="list-style-type: none"><li>• <b>Discussion:</b> Final feedback on key components of the Coordinated Mobility Plan</li><li>• <b>Information:</b> Next steps for Regional Transportation Plan/Coordinated Mobility Plan and opportunities for stakeholders to engage (Q&amp;A)</li></ul> <p>NOTE: No meeting is scheduled for November 2025.</p>





# Next Steps

## **April 2025:** Current Transportation System Report

- Interim report released in late April.
- Analysis of current system will feed into discussion of future systems and investments.

## **Summer 2025:** Future System Development

**Winter 2025:** Draft plan released for public comment

**May 2026:** Regional Transportation Plan (2026–2050)

## **Targeted Outreach**

### **Fall 2024–May 2025:**

Phase 1 outreach on mobility needs continues

### **June–September**

**2025:** Phase 2 outreach on prioritized strategies starts





# Thank You!

Jean Kim  
Senior Planner  
[Jkim@psrc.org](mailto:Jkim@psrc.org)



Puget Sound Regional Council