

# Equity Advisory Committee (EAC) Update

PSRC Executive Board

March 27, 2025



*We are leaders in the region to realize equity for all. Diversity, racial equity and inclusion are integrated into how we carry out all our work.*

[psrc.org/equity](https://psrc.org/equity)



# Presentation Overview

- **Regional Equity Strategy**
- **EAC Membership**
- **2024–2025 EAC Calendar**
- **Q&A**



# Regional Equity Strategy

The Strategy includes a suite of resources co-created with the Equity Advisory Committee. It will provide guidance to help members and staff work towards the region's equity goals.



## Community Engagement

- ▶ Equity Advisory Committee
- ▶ Anti-Displacement Organizations Report
- ▶ Equitable Engagement Guidance



## Capacity Building

- ▶ Learning Opportunities
- ▶ Prioritizing Equity
- ▶ Inclusive Procurement
- ▶ Hiring and Retention



## Best Practices

- ▶ Racial Equity Impact Assessment
- ▶ Equity Planning Resources



## Data and Research

- ▶ Equity Tracker
- ▶ Data and Analysis
- ▶ Puget Sound Trends
- ▶ Legacy of Structural Racism Interactive Report

# Regional Equity Strategy

All Resources Located Here:

<https://www.psrc.org/equity>

The Strategy includes a suite of resources co-created with the Equity Advisory Committee. It will provide guidance to help members and staff work towards the region's equity goals.



## Community Engagement

- ▶ Equity Advisory Committee
- ▶ Anti-Displacement Organizations Report (**Available Now!**)
- ▶ Equitable Engagement Guidance (**Available Now!**)



## Capacity Building

- ▶ Learning Opportunities
- ▶ Prioritizing Equity
- ▶ Inclusive Procurement
- ▶ Hiring and Retention



## Best Practices

- ▶ Racial Equity Impact Assessment (**Available Now!**)
- ▶ Equity Planning Resources (**Available Now!**)



## Data and Research

- ▶ Equity Tracker (**Available Now!**)
- ▶ Data and Analysis
- ▶ Puget Sound Trends
- ▶ Legacy of Structural Racism Interactive Report (**Available Now!**)



# Operating Procedures

- Up to **20 members**
- **At least two members** from each of the **four counties**
- **Residents, governmental and community-based organizations** providing lived experiences and perspectives
- **Co-create** products and programs (e.g., **Equity Pilot Program** for FHWA funds)
- **Advise** PSRC boards and committees on policies and programs with an equity lens.

# Proposed 2024 EAC Roster

## Equity Advisory Committee

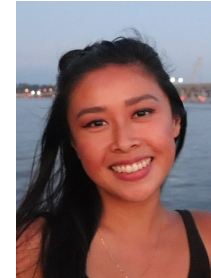
- Center equity in PSRC work
- Involve stakeholders early and often
- Wide range of equity related experiences and expertise



*Keshreeyaji Oswal*



*Ben Sung Henry*



*Annie Tran*



*Debbie Lacy*



*Hien "Elly" Trinh*



*Maria Fergus*



*Lisa Espinosa*



*Megan Espinoza*



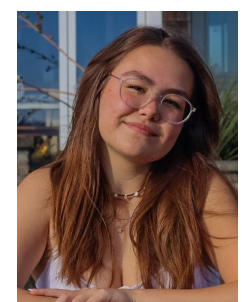
*Autrina Martindale*



*Jewel Shepherd-Sampson*



*Shannon Turner*



*Lily Distelhorst*



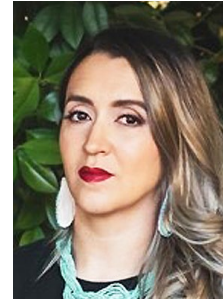
*Laurenne Sayles*



*Julius Moss*



*Julia Jannon-Shields*



*Lupe Valtierra-Prieto*



*Corey Orvold*



*Thanh Nguyen*



*Michelle Stewart*

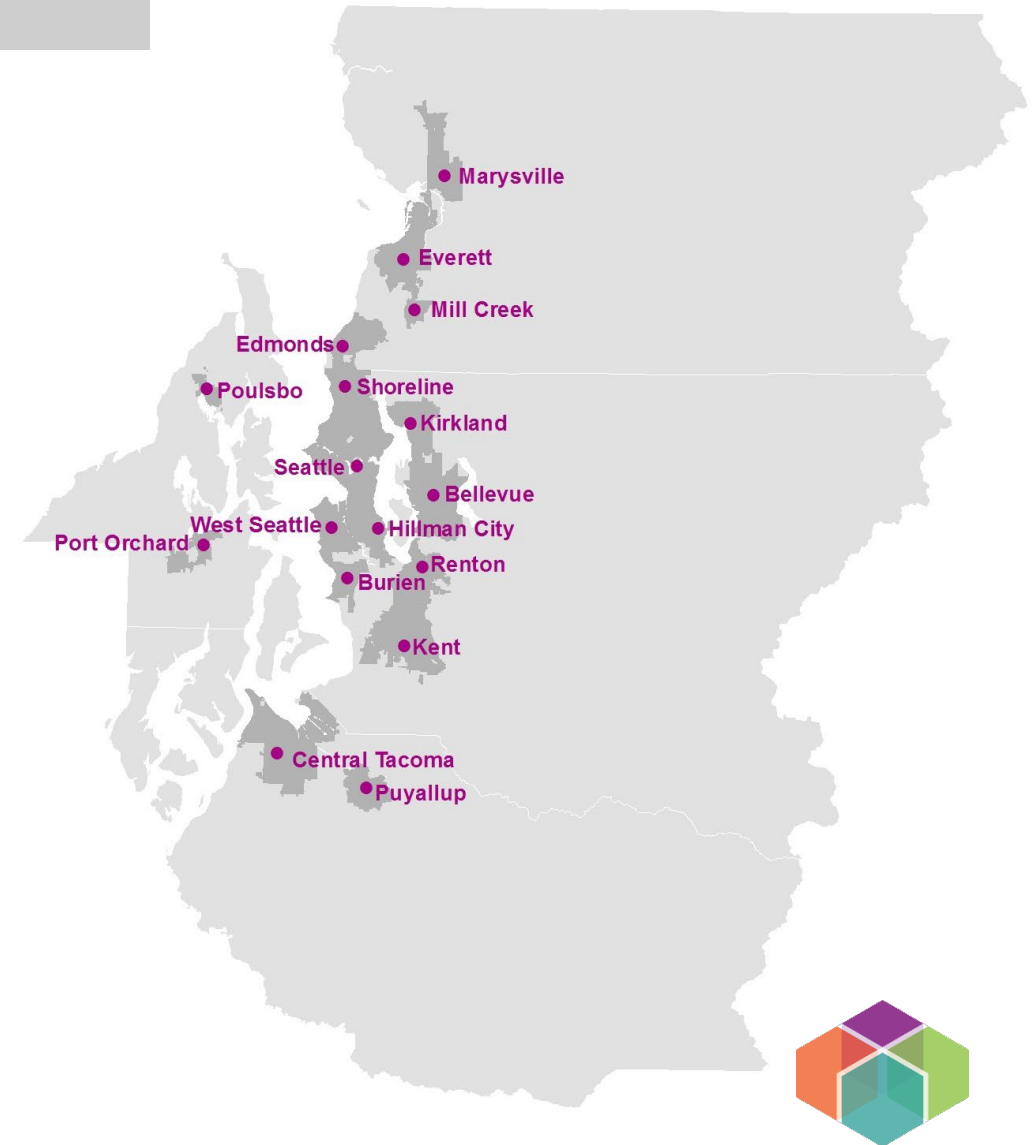


*Mindy Woods*

# Regional Representation

## Counties

- King: **8** members
- Kitsap: **3** members
- Pierce: **4** members
- Snohomish: **5** members



<https://www.psrc.org/committee/equity-advisory-committee>



# Outreach and Selection Process

## Summer 2025

- Solicit applications
- Blogs & social media posts
- Translate materials
- CBO/Member Outreach







**2024-2025 Topics**



# 2024 EAC Topics

**Growth**



**Transportation**



**Data**



**Economics**





- **Tribal Engagement**



# Transportation

- **Regional Safety Grant**
- **Regional Transportation Plan**
- **Consolidated Mobility Plan**





## Central Puget Sound Demographic Profile

October 2024

- **Demographic Profile and Title VI**



Puget Sound Regional Council

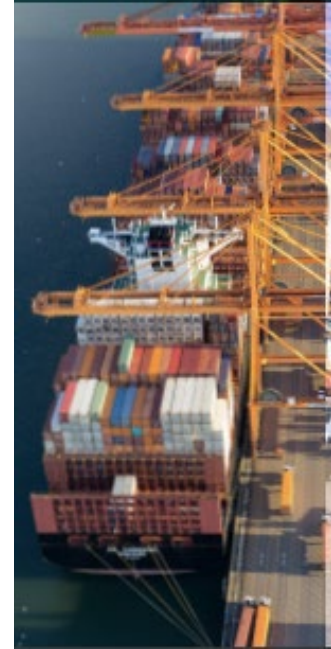
# Economic Development

- **Regional Economic Strategy**

## REGIONAL ECONOMIC STRATEGY



ADOPTED DECEMBER, 2021





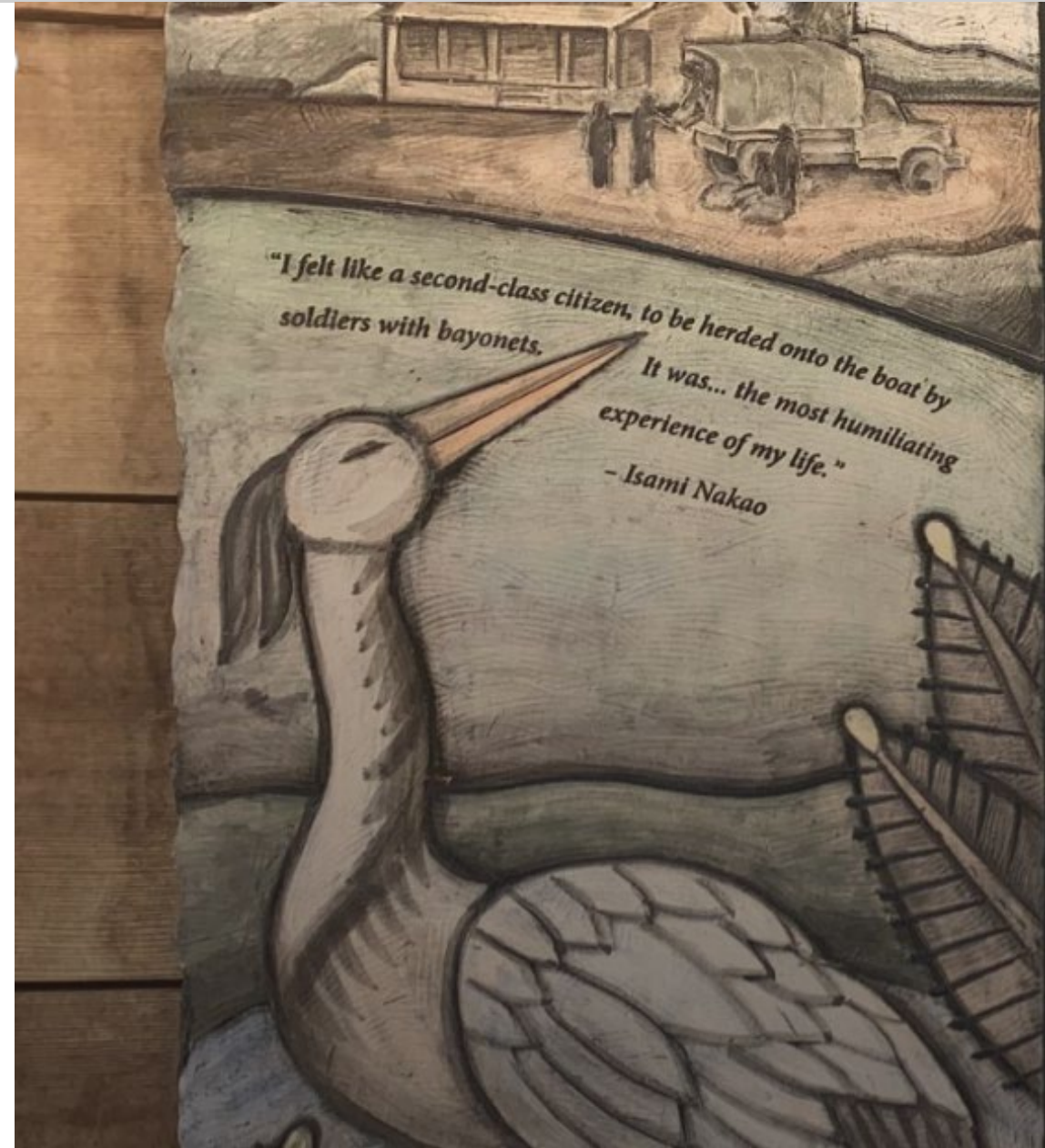
# Other Topics

- **State Legislative Update**



# Relationship Building

- **Quarterly Engagement Activities**
- **Annual Field Trip**





# Governor's Smart Communities Award



Left to right: Mike Fong, WA State Dept. of Commerce Director; Mayor Becky Erickson, City of Poulsbo and PSRC President; Shannon Turner, EAC Member and Co-Chair (2022-2023); Charles Patton, PSRC Program Manager; Josh Brown, PSRC Director



# Topics for 2025: April – Dec

- **Regional Housing Strategy**
- **Housing Research Center**
- **Regional Centers**





# Policy Board Representatives

- **Share the views of EAC during board meetings**
- **Keep EAC members updated on policy boards**



*Shannon Turner (Kitsap)  
TPB Representative*



*Julius Moss (Pierce)  
TPB Alternate*



*Michelle Stewart (Snohomish)  
GMPB Representative*

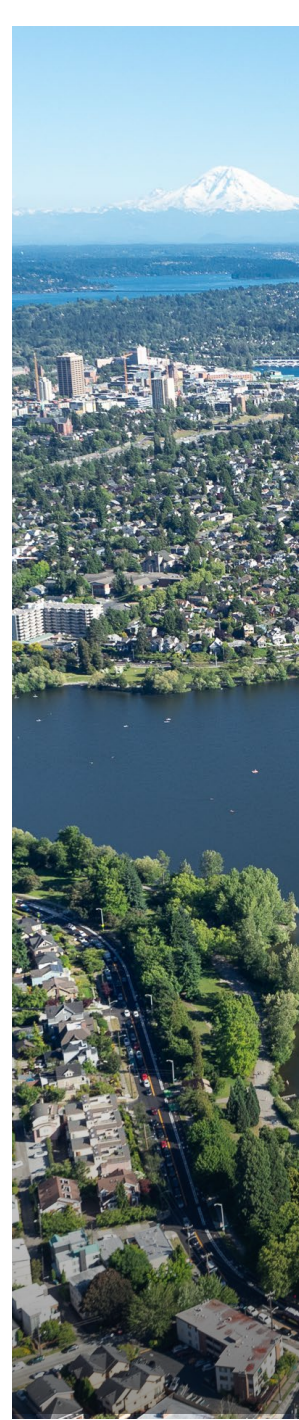


*Thanh Nguyen (King)  
GMPB Alternate*





# Committee Co-chairs



*Debbie Lacy (King)  
Co-chair, 2024-2025*



*Maria Fergus (Kitsap)  
Co-chair, 2024-2025*



*Shannon Turner (Kitsap)  
Co-chair, 2025-2026*



*Julia Jannon-Shields (King)  
Co-chair, 2025-2026*



# Thank You!

Debbie Lacy, King County  
EAC Co-chair

Maria Fergus, Kitsap County  
EAC Co-chair



Puget Sound Regional Council