

# 2025 Topics Calendar

Equity Advisory Committee (EAC)

April 3, 2025



*We are leaders in the region to realize equity for all. Diversity, racial equity and inclusion are integrated into how we carry out all our work.*

[psrc.org/equity](https://psrc.org/equity)



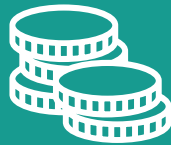
# Equity Advisory Committee

## 2025 Topic Areas



### Data

- ☐ Demographic Profile



### Economic Development

- ☐ Regional Economic Strategy



### Growth

- ☐ Regional Housing Strategy
- ☐ Racially Disparate Impacts (UW Student Consulting Lab)
- ☐ Regional Centers



### Transportation

- ☐ Regional Transportation Plan
- ☐ Coordinated Mobility Plan
- ☐ Regional Safety Action Plan
- ☐ Project Selection

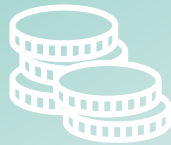
# Equity Advisory Committee

## 2025 Topic Areas



### Data

- ☐ Demographic Profile



### Economic Development

- ☐ Regional Economic Strategy



### Growth

- ☐ Regional Housing Strategy
- ☐ Racially Disparate Impacts (UW Student Consulting Lab)
- ☐ Regional Centers



### Transportation

- ☐ Regional Transportation Plan
- ☐ Coordinated Mobility Plan
- ☐ Regional Safety Action Plan
- ☐ Project Selection

# 2025 EAC Topics Calendar – Qtr. 2

April 3



Regional Housing  
Strategy

Quarterly  
Engagement  
Activity



May 1



Regional  
Transportation  
Plan

Coordinated  
Mobility Plan

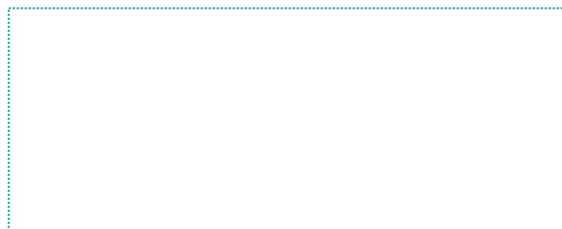


June 5



Demographic  
Profile

Annual Survey



# 2025 EAC Topics Calendar – Qtr. 2



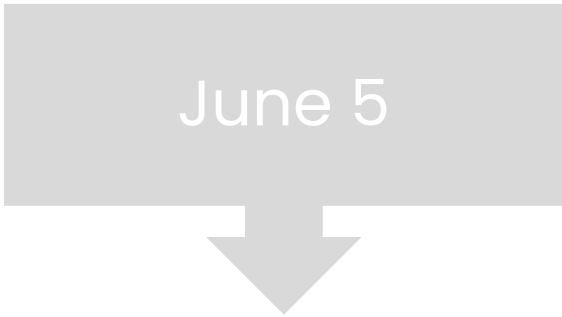
Regional Housing  
Strategy

Quarterly  
Engagement  
Activity



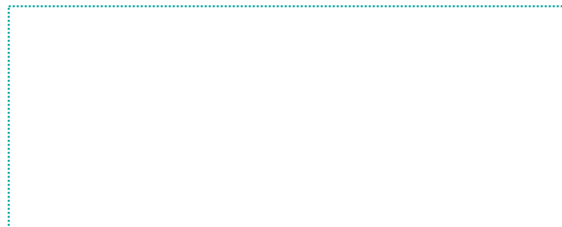
Regional  
Transportation  
Plan

Coordinated  
Mobility Plan



Demographic  
Profile

Annual Survey



# 2025 EAC Topics Calendar – Qtr. 2

April 3



Regional Housing  
Strategy

Quarterly  
Engagement  
Activity



May 1



Regional  
Transportation  
Plan

Coordinated  
Mobility Plan

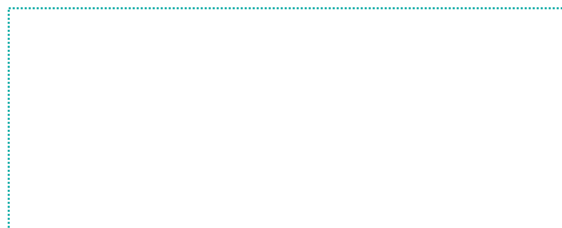


June 5



Demographic  
Profile

Annual Survey



# 2025 EAC Topics Calendar – Qtr. 2

April 3



Regional Housing  
Strategy

Quarterly  
Engagement  
Activity



May 1



Regional  
Transportation  
Plan

Coordinated  
Mobility Plan

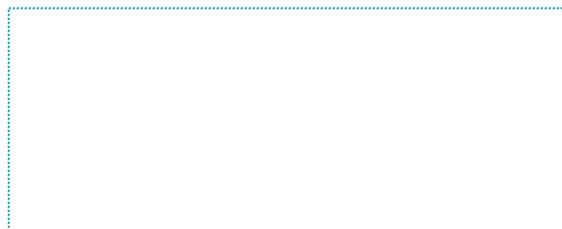


June 5



Demographic  
Profile

Annual Survey





# Questions?

Charles Patton, PhD

Program Manager, Equity Policy & Initiatives  
[cpatton@psrc.org](mailto:cpatton@psrc.org)



Puget Sound Regional Council