

# Regional Safety Action Plan Final Recommendation

Executive Board  
April 24, 2025



Puget Sound Regional Council

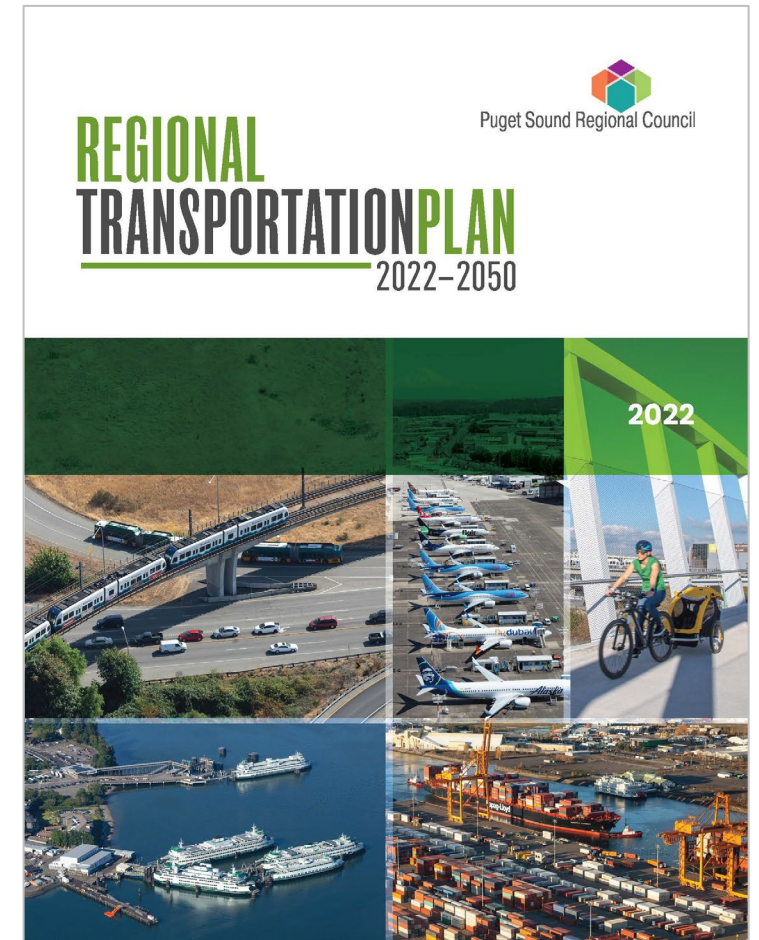


*We are leaders in the region to realize equity for all. Diversity, racial equity and inclusion are integrated into how we carry out all our work.*

[psrc.org/equity](https://psrc.org/equity)

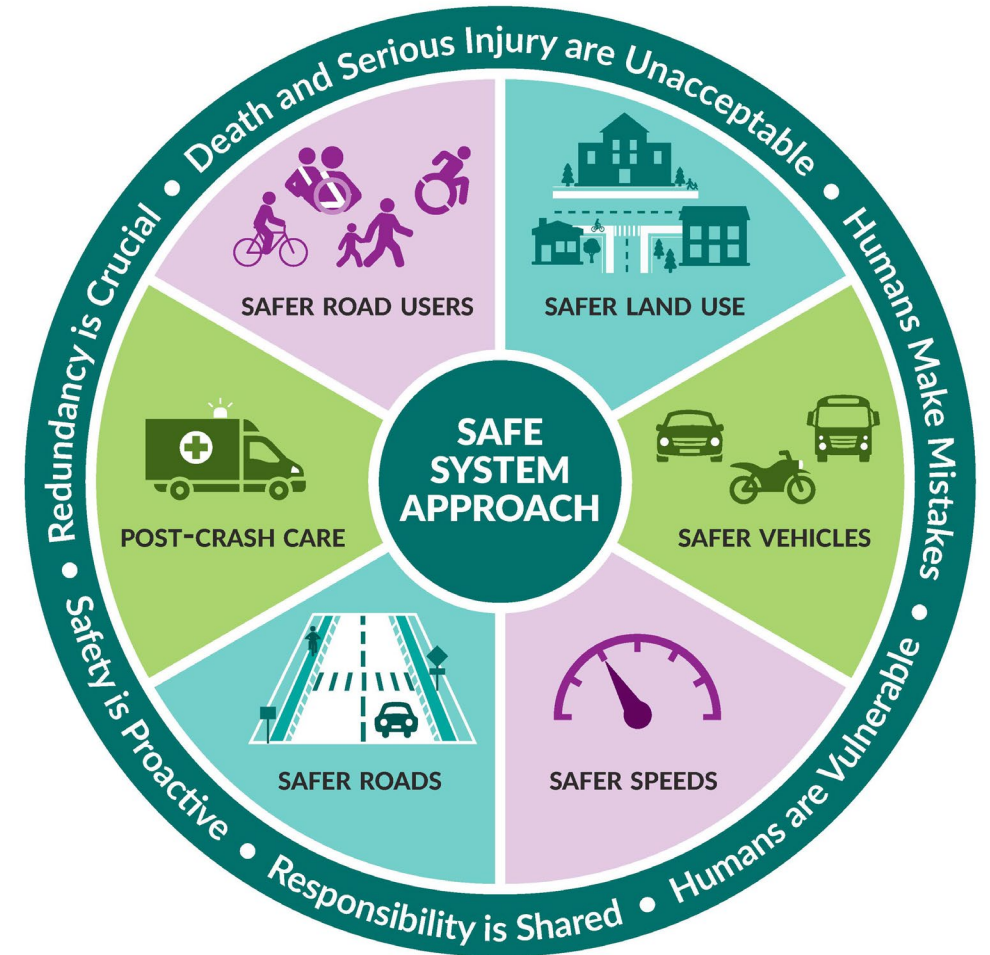
# Background

- RTP directs PSRC to develop a Regional Safety Action Plan (RSAP), including strategies, actions and performance indicators
- PSRC awarded ~\$8 M for development of RSAP through Safe Streets and Roads for All Program
  - PSRC serves as pass-through and administrator for 15 local jurisdiction safety action plans

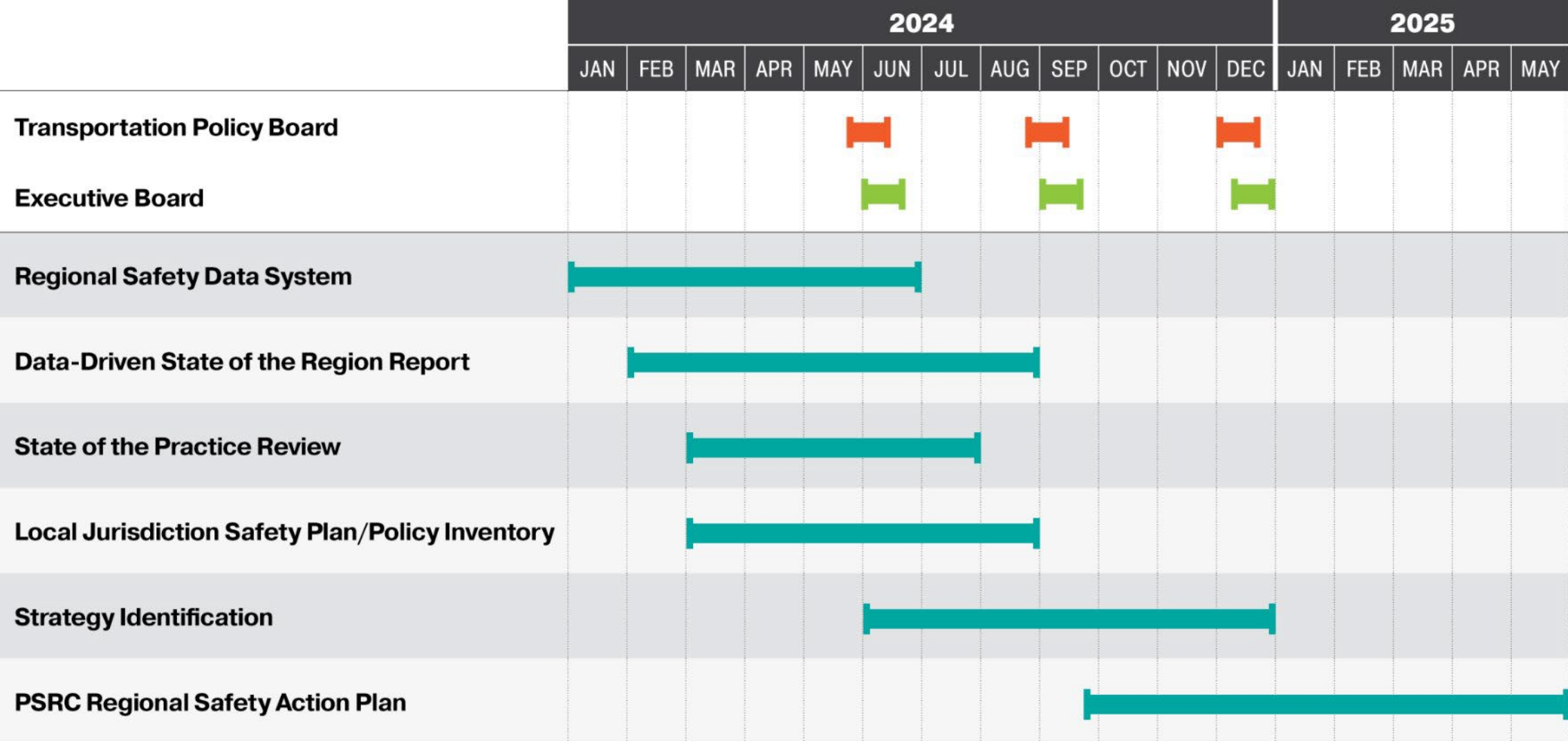


# Purpose of Regional Safety Action Plan

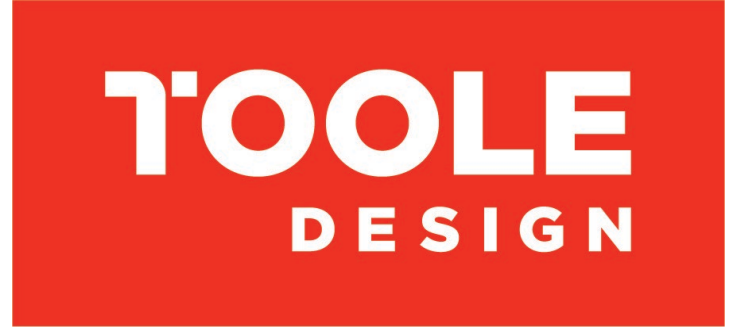
- Use data analysis, research and outreach to better understand safety issues/challenges across the region
- Identify key typologies and distinctions to frame the development of a menu of strategies and countermeasures
- Jurisdictions choose best approaches based on the specific context and safety issue they are addressing



# Development of Plan



**Safety  
Analysis  
and Public  
Engagement  
Support**





# PSRC Regional Safety Action Plan Engagement Hub

Welcome

What We Heard

Explore The Plan

Comment on the Plan

Stay Connected

## Welcome

Welcome to the Regional Safety Action Plan (RSAP) Engagement Hub. We're glad you're here!

### How to use this Engagement Hub

**PSRC is taking action to improve roadway safety. Let's do it together!**

Together, we can establish a regional culture of safety and advance solutions to achieve a thriving, equitable, and sustainable central Puget Sound.

### The draft plan is live!

PSRC has completed a draft of the Regional Safety Action Plan for the public to review.



HIN Map Dashboard 2016-2023 High-Injury Network Data Center

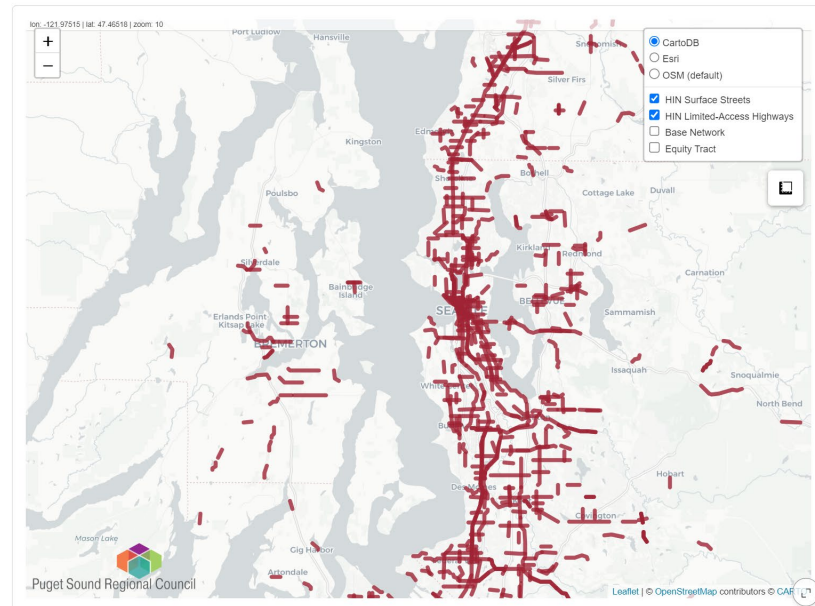
### High-Injury Network Map

PSRC is collaborating with local communities to create a Regional Safety Action Plan (RSAP). The plan will include coordinated strategies and solutions grounded in comprehensive data analysis, deep public engagement, and effective use of available funding sources.

The High-Injury Network (HIN) represented on this map shows the corridors with the highest concentration of traffic-related serious injuries and fatalities in the central Puget Sound region from 2016 to 2023. The map overlays with the census tracts with over 50% People of Color, over 50% Low-income households, and the overlap between the two better understand equity's role in safety in the region.

### Description

This page displays a map of priority safety corridors, which are areas with a high density of fatalities and serious injuries. A corridor is considered high-priority if it experiences more than two fatalities or serious injuries per mile on



# Public Involvement Plan

**Community Events & Interviews**

Jun 2024 – Aug 2024

**Online Hub**

Jul 29 – Oct 15

**Public Opinion Survey**

Aug 15 – Sep 30

**Regional Public Meetings**

Sep 15 – Oct 11

**Focus Groups**

Oct 1 – Nov 15

**Internal Briefings**

Jun 2024

&

Sep 2024



uncommon  
**BRIDGES**



# Public Comments

**62** commenters

- 50 through Online Hub
- 12 through email

**203** total comments

- 114 through Hub
- 89 through email

**3** commenter types

- Individuals: 38
- Organizations: 3
- Governments: 13
- Other: 8\*

**Puget Sound Regional Council**  
REGIONAL SAFETY ACTION PLAN RELEASED FOR COMMENT

**We want to hear from you!**  
The draft plan has been released for public comment. Share your thoughts with us by February 14!

**Puget Sound Regional Council**  
REGIONAL SAFETY ACTION PLAN

**We want to hear from you!**  
The draft plan has been released for public comment. Share your thoughts with us by February 14!

**Puget Sound Regional Council**  
January 15 at 2:30 PM

When you think of safe roads in the region, what do you see? PSRC's Safety Action Plan to eliminate traffic deaths and serious injuries on...

Like Comment Send

View more answers

**Bob Myrick** Admin All-star contributor  
Difficult to read, but aims to make our environment safer.

**Em Piro** Author  
**Bob Myrick** It is definitely a big document to sift through. Happy to help provide any tips or pointers, or share more about the process for how it was developed, if folks are interested!

For me personally, one of my starting points is to look at the section most relevant to the ways I travel and have felt at risk - namely, cycling (in 51 in this doc). So I go straight to that section first and see if it covers my concerns, and then I can explore more from there.

This link takes you straight to the page where you can make comments. You can click the button that says "DRAFT REGIONAL SAFETY ACTION PLAN" and poke around - then leave any feedback you have!  
<https://psrc-rsap.infocommunity.org/comments/>

**PSRC-RSAP.INFOCOMMUNITY.ORG**  
Comments - PSRC Regional Safety Action Plan

**Ride Together Pierce**  
January 31 at 8:49 AM

**Puget Sound Regional Council**  
REGIONAL SAFETY ACTION PLAN

**We want to hear from you!**

comment on the Regional Safety Action Plan! PSRC's goal is to eliminate traffic deaths and serious injuries... [See more](#)

1 comment

Comment Share

this! I'm a member of the team that is working on this project, and happy to answer any questions about the document itself, or the process of submitting comments.

**SeaTac Neighborhood Action Council.**

**SeaTac Neighborhood Action Council:** "Hi neighbors! We're excited to see your post in Tacoma Washington Bicycle Club and hope you're having a great time!"

**Tacoma Washington Bicycle Club** liked your post in Tacoma Washington Bicycle Club.

**tsap County Road Conditions Group:** "Hello neighbors! We're excited to see your post in Tacoma Washington Bicycle Club and hope you're having a great time!"

**Richard Toyer** likes your post in **Snohomish Island County Crime and Community:** "Hello all! I want to highlight this..."

**Earlier**

**You can now post and comment in SeaTac Neighborhood Action Council.**

**Ride Together Pierce and Fred Luke** like your post in **Pierce County Coalition for Active Transportation:** "Hi neighbors! I want to highlight this..."

**Allyson ReNae** and 3 others reacted to your post in **StreetSmart Bremerton - SSB:** "Hello all! I want to highlight this..."

**Debbie Bernhard** and **Chris James** commented on your post in **Snohomish Island County Crime and Community.**



# Comment Summary Document

## Staff Responses

- No Action - 160
- Technical Correction - 19
- Board Review - 24

PSRC Regional Safety Action Plan Public Comments								
Commenter ID	First Name	Last Name	County	Responder Ty	Source	Comment	Response Class	Response
A	RICH	MEREDITH	Snohomish County	Individual	Hub	There is some good information in the draft plan and draft summary. Most of the treatments are labeled "safer" instead of "safe", which the correct way to describe safety improvements. However, there are still a couple of places in both documents that still identify "safe" when describing pedestrian crossing treatments. The strategies and treatments described in the plans can make crossings "safer", but they do not necessarily make them safe. Please consider revising the body of the text in both documents to reflect my suggestions.	Technical Correction	PSRC staff will review the recommended change and take action where appropriate.
AA	Don	Vanney	Snohomish County	Individual	Hub	This will give the communities a very good roadmap, and the tools to help make all of our community's safer whether you drive, walk, or bike.	No Action Taken	Comment has been reviewed and staff recommend no changes to the plan.
Apex Driving School-Montlake Terrace			Snohomish County	Organization	Direct Outreach	<p>"I have been working on this issue of 'individual decision making' for years, trying to get the state to properly address.</p> <p>Safety Starts with Behavior Roadway safety issues like speeding and distracted driving are heavily dependent on the individual making decisions that affect other people. We need to find a way to grow our safety culture regionally.</p> <p>However, the individual's decision making is based upon their personal knowledge, and we as a state just take that for granted."</p> <p>As just one example of many, "reckless driving". Here is the homework for 'Reckless Driving'. - I emailed to some of the representatives on the state legislative transportation committee. Washington Traffic Safety Education Required Curriculum Standards – to be published by DOL in March 2025                      *C. Explain Washington State laws, consequences, and best practices concerning rules of the road                      1. Reckless driving Class 9.0 - To comply with Washington traffic laws and regulations, you must be able to: "instructors will provide lessons that ensure students are able to                      I am trying to get DOL to write more substantial requirements in driver education for driving schools to teach, instead of just relying upon expectations the driving school will look up the laws and teach from them.                      "I wrote this in just a few hours:</p>	Board Review	PSRC is considering a future safety work program that may include and address policies, enforcement, and education.
						<p>Schools must teach the following elements:</p> <p>-1C. Any person who drives any vehicle in willful or wanton disregard for the safety of persons or property is guilty of reckless driving. RCW 46.61.500                      -2C. Violation of reckless driving is a gross misdemeanor punishable by imprisonment for up to three hundred sixty-four days and by a fine of not more than five thousand dollars and the license or permit to drive of any person convicted of reckless driving shall be suspended by the department for not less than thirty days. RCW 46.61.500                      -3C. The provisions of reckless driving shall apply upon highways and elsewhere throughout the state. RCW 46.61.005                      -4C. Exceeding speed limit evidence of reckless driving. The unlawful operation of a vehicle in excess of the maximum lawful speeds and under the circumstances described shall be evidence of</p>		

<https://www.psrc.org/our-work/regional-safety-action-plan>



# Transportation Policy Board Direction

## Recommendation: Future Work Program

(ID#s 5; 186)

Edit RSAP to include direction to build on strategies, information, and data, including future PSRC work program to include research, convenings, and workshops, including:

- Driver behavior and education
- Speeding and enforcement
- Ongoing monitoring, guidance, best practices, updates



# Transportation Policy Board Direction

## **Recommendation: Data and High Injury Networks**

**(ID#s 20; 31; 41; 60; 62; 117; 125; 181-182)**

Add language recognizing state, regional, and local HINs and analyses, and that they should inform PSRC's safety planning and implementation.



# Transportation Policy Board Direction

## **Recommendation: Impairment Data**

(ID#s 24-27; 116)

Add language identifying that impairment data may be underreported, which should be considered when assessing appropriate policies and projects.



# Transportation Policy Board Direction

## **Recommendation: Freight Corridors and Manufacturing Industrial Centers**

**(ID#s 159-165)**

Add language emphasizing importance of local context and core purposes of roadways. Discuss unique characteristics and needs of freight corridors and MICs when applying safety strategies and that certain strategies may not be suitable.



# Transportation Policy Board Direction

## **Recommendation: RSAP and RTP Implementation**

(ID#s 35; 129)

Add direction to incorporate state, regional, and local HINs and safety planning into both PSRC's project selection and project consistency review for the Regional Transportation Plan.



# Today's Action

**The Executive Board recommends the General Assembly adopt the Regional Safety Action Plan**



# Next Steps

- Implement edits to draft Regional Safety Action Plan and transmit to General Assembly
- General Assembly **adopts** Final Plan on **May 22<sup>nd</sup>**





**Thank  
You!**

Kelly McGourty  
Director of Transportation Planning  
[kmcgourty@psrc.org](mailto:kmcgourty@psrc.org)

Ben Bakkenta, AICP  
Director of Regional Planning  
[bbakkenta@psrc.org](mailto:bbakkenta@psrc.org)

