

Regional Transportation Plan & Coordinated Mobility Plan

Equity Advisory Committee • May 1, 2025



Puget Sound Regional Council



We are leaders in the region to realize equity for all. Diversity, racial equity and inclusion are integrated into how we carry out all our work.

psrc.org/equity

Icebreaker



What are your top priorities for transportation?



Go to menti.com and enter 4634 7240

Today

- Overview of Regional Transportation Plan (RTP) Milestones and Outreach Plan
- Coordinated Mobility Plan Outreach To-Date
- Next Steps

DISCUSSION QUESTIONS

- *What are your top priorities and needs for the transportation system?*
- *What advice do you have for us as we begin our outreach?*



What is a Regional Transportation Plan (RTP)?

- Lays out the region's **long-term transportation needs and planned investments**.
- **Developed collaboratively** with cities, counties, transportation agencies and the public.
- **Updated every four years** according to state and federal requirements.



RTP Scope of Work

Board feedback on policy priorities for the next plan have confirmed the commitment to:



RTP Scope of Work

Additional significant elements of the next plan include:

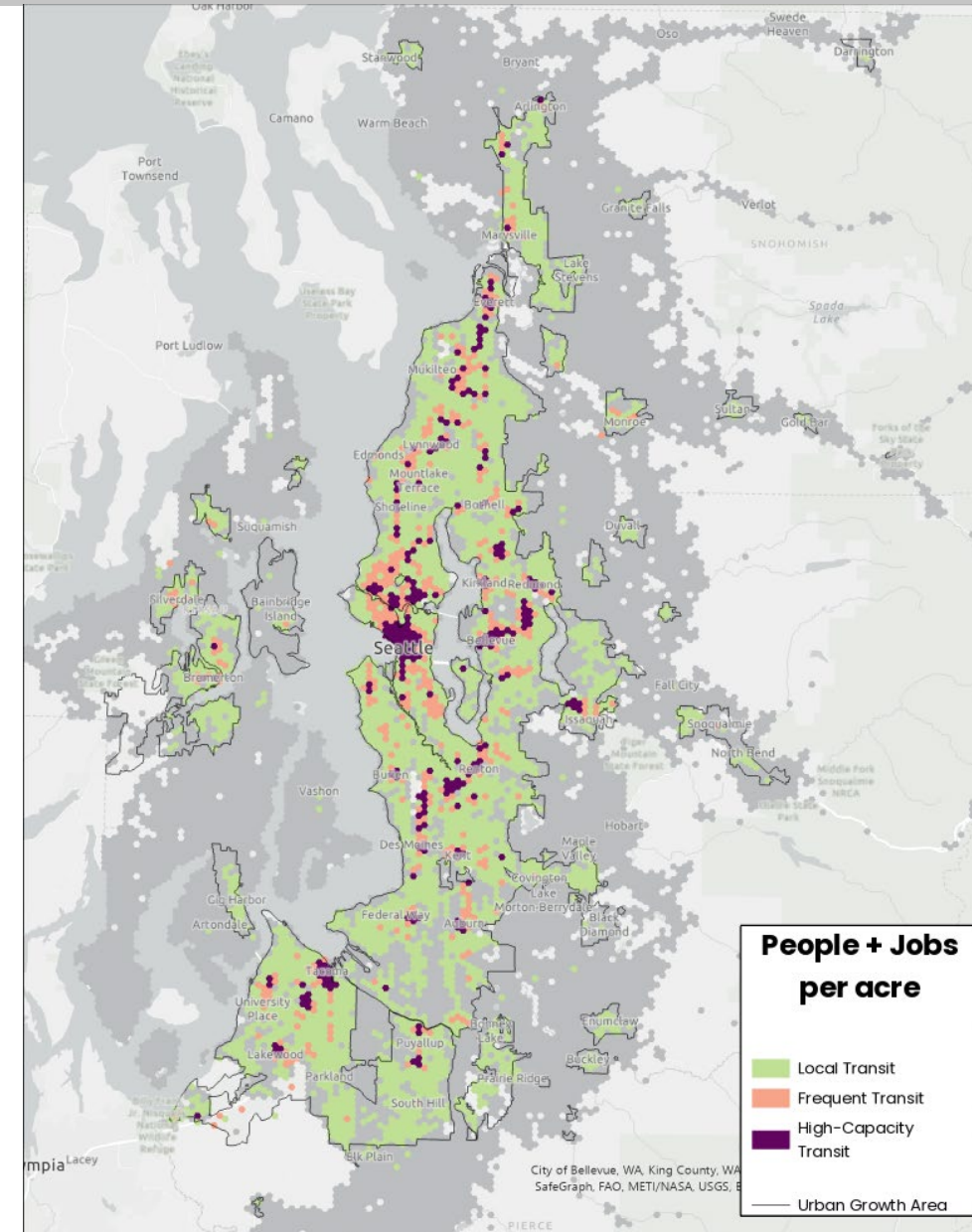
- Reevaluation of the Financial Strategy
- Continued analysis and monitoring of equity outcomes
- Analysis of changing travel behavior
- Regional transit access assessment
- Emerging stormwater issues and mitigation
- Growth targets and investments from 2024 comprehensive plans
- Identify actions and outcomes



Current Transportation System Report

The Regional Transportation Plan will:

- Look at where people & jobs are today and planned for 2050 – at varying densities.
- Identify potential gaps in the transportation system supporting those places.
- Interim report on the current system to be published in early May.
- Planned investments into the future to be discussed May – July.



Planned RTP Public Engagement

**Community
Events &
Interviews**

**Online
Engagement Hub**

**Regional Public
Meetings**

Focus Groups

**PSRC Board/
Committee
Briefings**

**Public Comment
Process**

**Public Opinion
Survey**



What's included in the Coordinated Mobility Plan?

- Information on **population trends**.
- **Transportation needs** of the people with accessibility and mobility challenges, due to their age, income, or ability.
- **Prioritized strategies** addressing the needs.
- A **regional inventory** of existing transportation programs.

Link to the current plan:

<https://www.psrc.org/planning-2050/regional-transportation-plan/coordinated-mobility-plan>



Transportation Options



Specialized Transportation



Coordinated Mobility Plan Outreach

Purpose: to identify key transportation needs of individuals with mobility challenges due to their age, income, or ability.

Organizations Engaged To-date:

- Bellevue Youth Council
- Kitsap County Accessible Communities Advisory Committee
- Kitsap Housing and Homelessness Coalition
- Lakewood Youth Council
- Transit Riders Union – Bus and Transit Service Committee



Planned Meetings

PSRC-held meetings (May 7 & 9): Two virtual meetings are set for CBOs that don't meet regularly or have limited resources.

Additional organizations to engage:

- Arlington Youth Council
- Bellevue Network on Aging
- Federal Way Senior Advisory Commission
- Kirkland Senior Council
- Kitsap County Area Agency on Aging Advisory Council
- Sound Transit Citizens Accessibility Advisory Committee
- Tacoma Area Commission on Disabilities

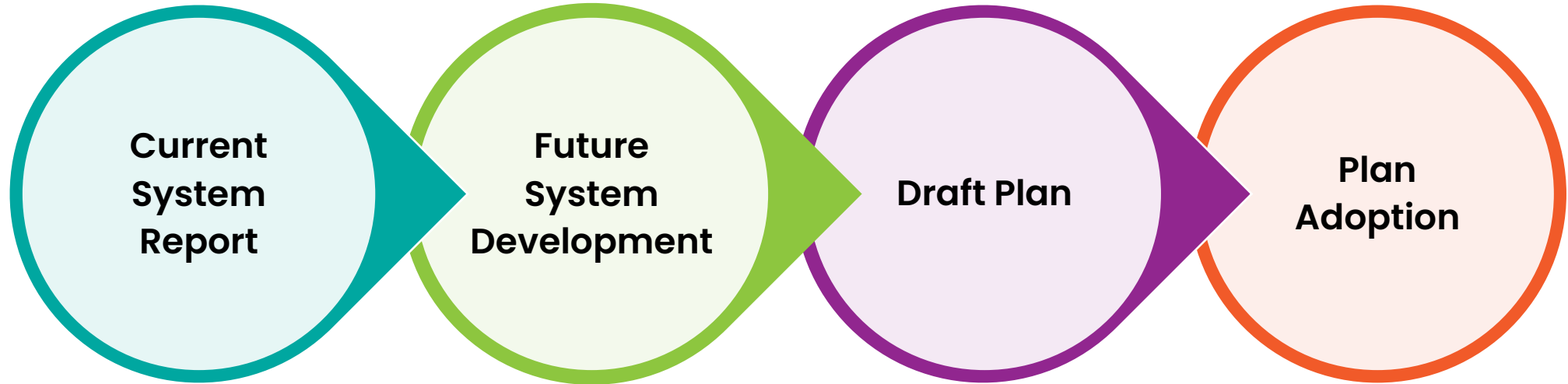
Key Mobility Needs

- Shorter travel time with fewer transfers.
- More services at times and places people need them.
- Easy-to-find information on services and language support.
- Better access to healthcare and essential services.
- Affordable options for low-income families.
- Well-connected, ADA-accessible infrastructure.
- Better regional coordination to meet growing needs.

Regional Transportation Plan Update Process

2025

2026



Community Engagement Informs the Plan
Transportation Needs & Priorities



Discussion

- What are your top priorities and needs for the transportation system?
- What advice do you have for us as we begin our outreach and engage with communities on these issues?
- What outreach opportunities do you know about where we can reach the priority populations?
- What resources should we review?
 - Data, reports, and studies related to the mobility needs of priority populations
- Any additional comments or questions?

Next Steps

RTP Engagement:

- Online engagement hub – May 2025
- Community tabling – May through Fall 2025
- Regional meetings – Fall 2025
- Focus groups and stakeholder interviews – Fall 2025

Coordinated Mobility Plan Engagement:

- Phase 1 (mobility needs) – Through May 2025
- Phase 2 (priorities and strategies) – June–Fall 2025

Winter 2025–Early 2026: Draft plan released





Thank You!

Kelly McGourty

Director of
Transportation Planning
kmcgourty@psrc.org

Jean Kim

Senior Planner
jkim@psrc.org



Puget Sound Regional Council