

PSRC Regional Transportation Plan & Coordinated Mobility Plan Outreach

CMAC | May 21, 2025

안녕하세요

您好

¡Hola!

hello

Здравствуйте!

Xin chào

أهلاً وسهلاً



Puget Sound Regional Council



We are leaders in the region to realize equity for all. Diversity, racial equity and inclusion are integrated into how we carry out all our work.

psrc.org/equity

Today

- Overview of Regional Transportation Plan (RTP) Milestones and Outreach Plan
- Coordinated Mobility Plan Outreach To-Date
- Breakout Discussion (60 mins)
- Next Steps



RTP Scope of Work

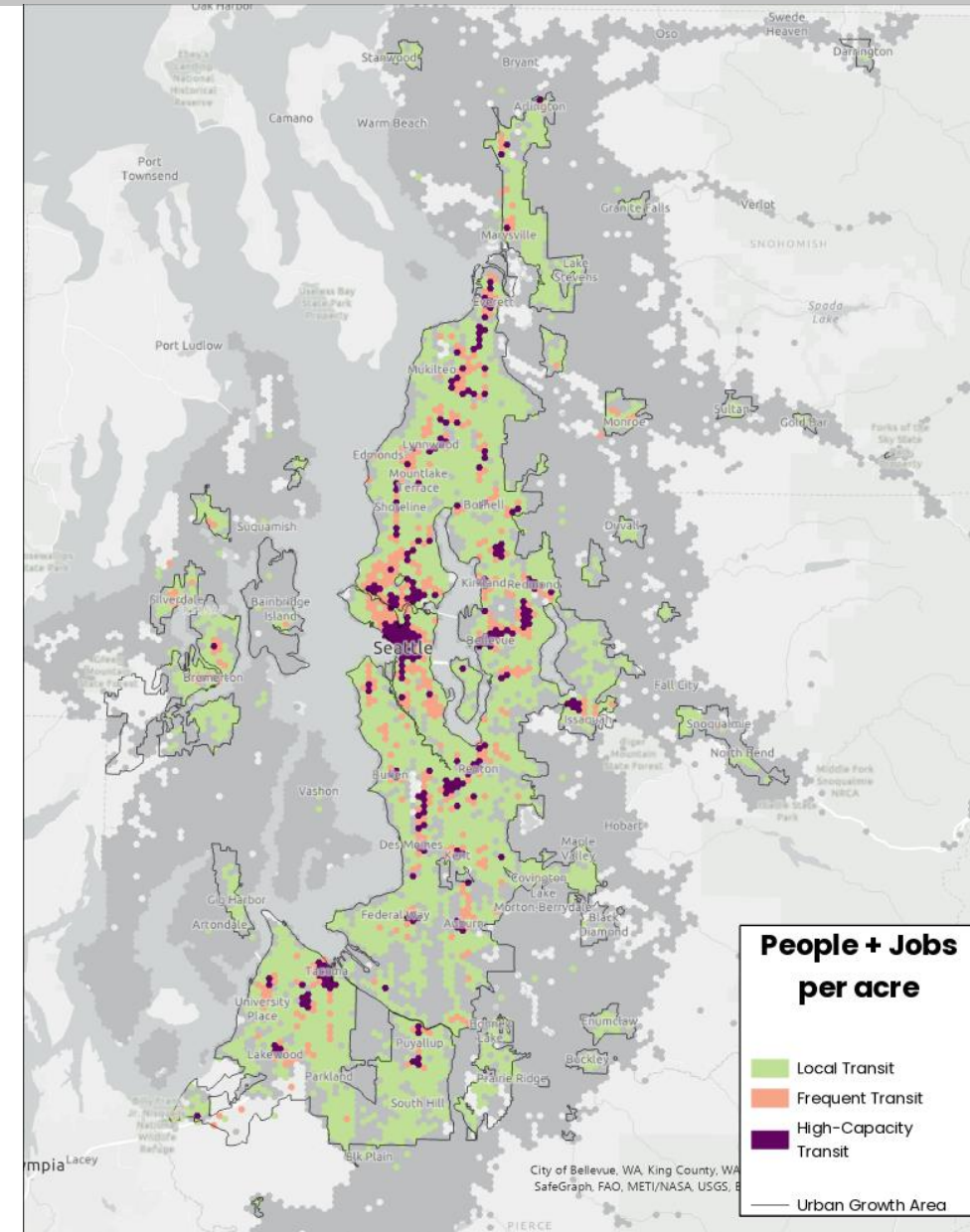
Board feedback on policy priorities for the next plan have confirmed the commitment to:



Current Transportation System Report

The Regional Transportation Plan will:

- Look at where people & jobs are today and planned for 2050 – at varying densities.
- Identify potential gaps in the transportation system supporting those places.
- Interim report on the current system to be published in early May.
- Planned investments into the future to be discussed May – July.



Regional Transportation Plan Engagement



Online Engagement Hub



Outreach Meetings



Focus Group
Interviews



Social Media



Survey



Coordinated Mobility Plan

- Highlights **transportation needs** of the people with accessibility and mobility challenges.
- Lays out **prioritized strategies** addressing the needs.
- Includes a **regional inventory** of existing transportation programs.



Specialized Transportation



Coordinated Mobility Plan Outreach

Purpose: to identify key transportation needs of individuals with mobility challenges due to their age, income, or ability.

Organizations Engaged To-date:

- Arlington Youth Council
- Bellevue Youth Council
- Federal Way Senior Advisory Commission
- Kitsap County Accessible Communities Advisory Committee
- Kitsap Housing and Homelessness Coalition
- Lakewood Youth Council
- Transit Riders Union – Bus and Transit Service Committee

Additional Meetings

PSRC-held meetings (May 7 & 9): Two virtual meetings for CBOs that don't meet regularly or have limited resources.

Additional organizations to engage:

- Bellevue Network on Aging
- Kirkland Senior Council
- Kitsap Area Agency on Aging Advisory Council
- Sound Transit Citizens Accessibility Advisory Committee
- Tacoma Area Commission on Disabilities



Key Mobility Needs Identified in the Current Plan

- Shorter travel time with fewer transfers.
- More services at times and places people need them.
- Easy-to-find information on services and language support.
- Better access to healthcare and essential services.
- Affordable options for low-income families.
- Well-connected, ADA-accessible infrastructure.
- Better regional coordination to meet growing needs.

Older Adults

Key themes from outreach:

- Many older adults choose not to use public transit for various reasons, including **long distances to transit stops, lack of ADA-accessible infrastructure and amenities, and safety** concerns.
- Limited transportation options restrict access to **routine medical care**.

Area Plans:

- In **rural areas**, inadequate transportation is a major challenge, contributing to social isolation.
- Lack of **reliable and affordable transportation** is a major barrier to aging in place.



People with Disabilities

Key themes from outreach/other resources:

- Lack of reliable and easy **cross-county trips** by public transit and ADA paratransit.
- **Shorter travel time** and **fewer transfers** are needed, especially for those with intellectual or developmental disabilities (IDD).
- Participants emphasized the importance of **easy-to-read wayfinding information** and **restrooms** at transit stations.



People with Low Incomes

Key themes from other resources:

- **Cost of driving** (vehicle, maintenance, registration, insurance) continues to be top reason for not driving; low-income survey respondents more likely to use transit.
- More likely to experience transportation hardships than overall population, such as:
 - Skipping trips due to lack of transportation
 - Rescheduling appointments due to lack of transportation
 - Spending more time on transportation (unable to leave home when you want)



Youth

Key themes from outreach & other resources:

- Most young people **are aware** they can ride transit for free and most have used some form of transit at least a few times.
- The city and neighborhood **where youth live**, the **distance to school**, and **household vehicle availability** are key factors in their mode choice.
- **Transit availability and reliability** were also important factors in whether they use transit or not.
- **Safer infrastructure** (sidewalks, bike lanes, more crosswalks, lighting at transit stops, etc.) is a high priority.



Other Highlights

Rural Residents

- Report feeling **less safe walking** along streets (especially major roadways) than urban residents
- More concerned with **transit availability** (days of service, time of day), **destinations served**, and **frequency** in rural areas compared to safety and travel time in urban areas

Immigrant Communities or People with Limited English Proficiency

- **Language barriers** (limited availability of multilingual information), **safety concerns**, and difficulty navigating **complex systems** (transfers, fare systems, or eligibility) are key challenges.



Summary

Continue to highlight the need for:

- **More transit service** at times and places people need it.
- **Better access to healthcare and essential services.**
- **Easy-to-find information** on services and language support.
- **Well-connected, ADA-accessible sidewalks.**

Strong support for:

- **Improved first-mile/last-mile** connections to transit.
- **Seamless travel across city or county lines.**
- **Safe and accessible infrastructure.**



Breakout Instructions

Goals:

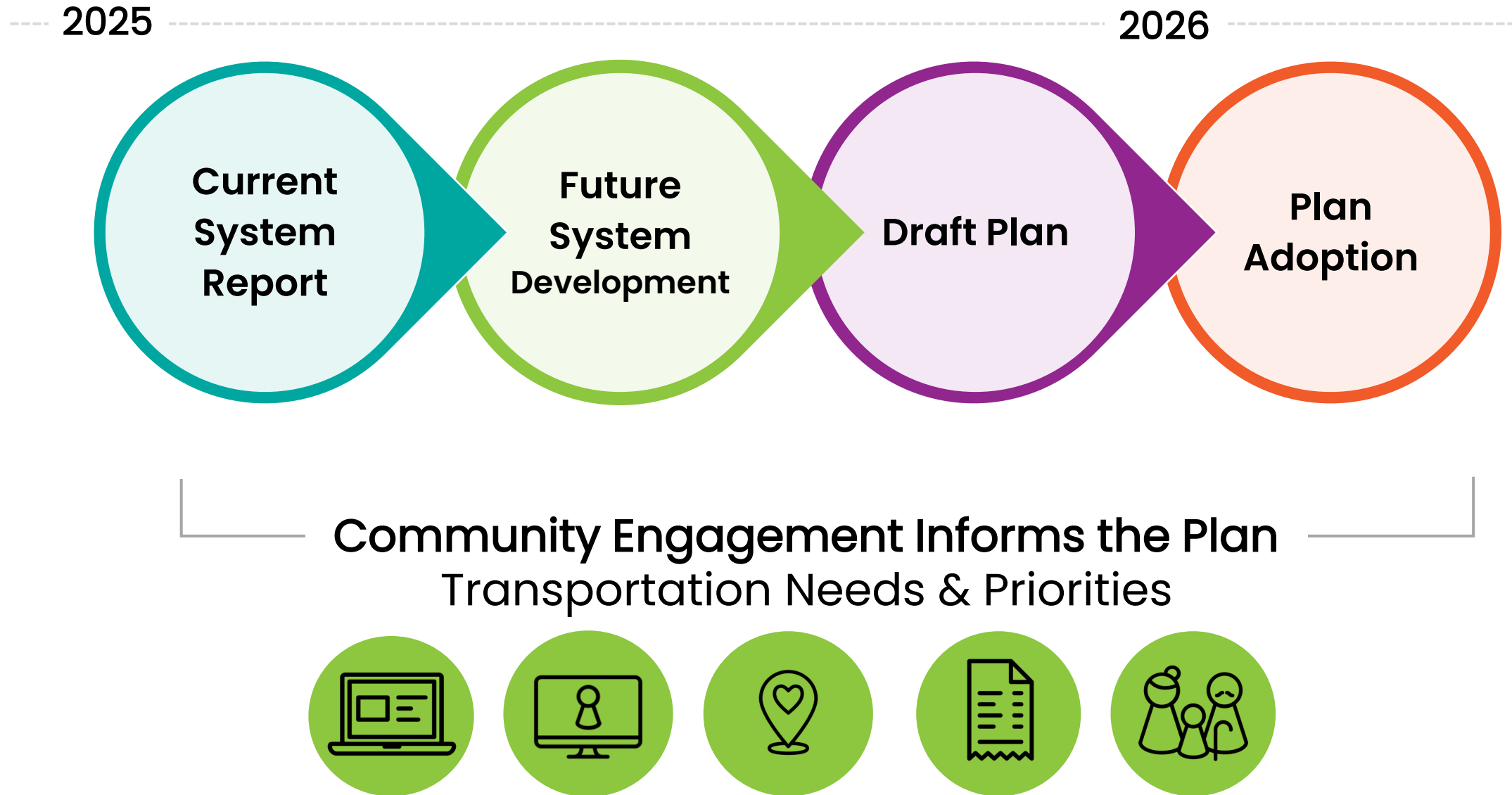
- Identify key **barriers, needs, and solutions** for priority populations.
- Highlight **priority needs and intersectional challenges**

Discussion:

- **Part 1 (25 min): Transportation Needs & Gaps**
 - What challenges stand out? What's missing? What's most important to highlight?
- **Part 2 (10 min): Regional Framing**
 - How should we organize or present regional needs in the plan?
- **Report back 1–2 key takeaways** after each section



Regional Transportation Plan Update Process



Next Steps

RTP Engagement:

- Community tabling – May through Fall 2025
- Regional meetings – Fall 2025
- Focus groups and stakeholder interviews – Fall 2025

Coordinated Mobility Plan Engagement:

- Phase 1 (mobility needs) – Through May 2025
- Phase 2 (priorities and strategies) – June–Fall 2025

Winter 2025–Early 2026: Draft plan released





Thank You!

Jean Kim

Senior Planner

jkim@psrc.org

Erin Hogan

Associate Planner

ehogan@psrc.org



Puget Sound Regional Council