



Puget Sound Regional Council



# Summer Planning Academy **HANDBOOK** 2025





### **Americans with Disabilities Act (ADA) Information**

Individuals requiring reasonable accommodations may request written materials in alternate formats, sign language interpreters, physical accessibility accommodations, or other reasonable accommodations by contacting the ADA Coordinator, **Thu Le**, at 206-464-6175, with ample advance notice. Persons who are deaf or hard of hearing may contact the ADA Coordinator, **Thu Le**, through TTY Relay 711.

### **Title VI Notice**

PSRC fully complies with Title VI of the Civil Rights Act of 1964 and related statutes and regulations in all programs and activities. For more information, or to obtain a Title VI Complaint Form, visit <https://www.psrc.org/title-vi>.

### **Language Assistance**

العربية (Arabic) | 中文 (Chinese) | Deutsch (German) | Français (French) | 한국어 (Korean) | Русский (Russian) | Español (Spanish) | Tagalog | Tiếng Việt (Vietnamese)

Visit <https://www.psrc.org/language-assistance>

Funding for this document provided in part by member jurisdictions, grants from the U.S. Department of Transportation, Federal Transit Administration, Federal Highway Administration and Washington State Department of Transportation.

Additional copies of this document may be obtained by contacting:

Puget Sound Regional Council  
Information Center  
1201 Third Avenue, Suite 500,  
Seattle, WA 98101  
206-464-7532 | [info@psrc.org](mailto:info@psrc.org) | [psrc.org](http://psrc.org)



TABLE OF CONTENTS

Table of Contents ..... 3

Welcome! ..... 4

About Puget Sound Regional Council ..... 5

Map of the Central Puget Sound Region ..... 6

Day 1 – Introduction to Planning – July 30, 2025 ..... 7

    Schedule ..... 7

    Questions for the Day ..... 8

Day 2 – Transportation – August 1, 2025 ..... 9

    Schedule ..... 9

    Questions for the Day ..... 10

Day 3 – Housing – August 6, 2025 ..... 11

    Schedule ..... 11

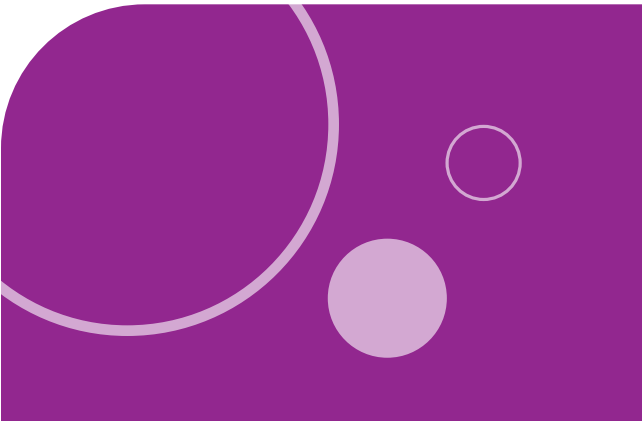
    Questions for the Day ..... 12

Day 4 – Environmental Planning – August 8, 2025 ..... 13

    Schedule ..... 13

    Questions for the Day ..... 14

Open House – August 12, 2025 ..... 15





# Welcome!

Congratulations on being a member of the third Summer Planning Academy!

SPA is a leadership development opportunity offered free of charge to students interested in planning a better future for our region. SPA introduces students to planning topics through engaging sessions, activities, and site visits led by regional planning experts at PSRC, colleagues from partner agencies, and leaders from the community. The program encourages students to think creatively about how better planning can help people lead better lives. SPA can also help young people map out the required steps toward a career in the planning field.

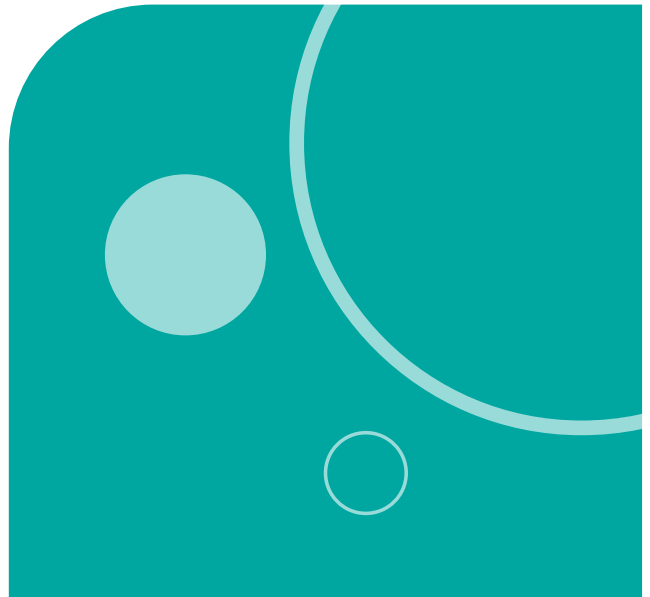


# About Puget Sound Regional Council

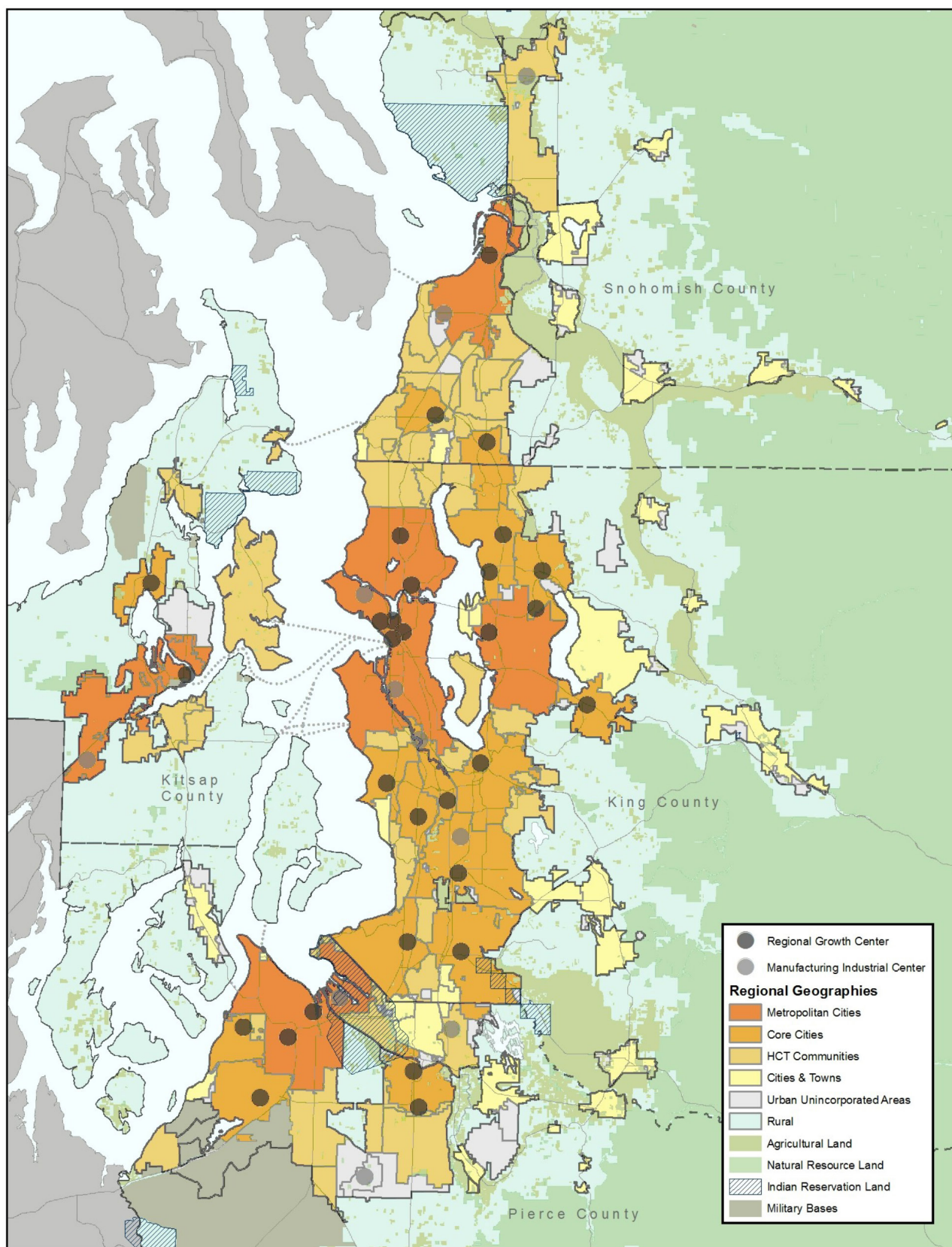
PSRC develops policies and coordinates decisions about regional growth, transportation and economic development planning within King, Pierce, Snohomish and Kitsap counties. PSRC is composed of nearly 100 members, including the four counties, cities and towns, ports, state and local transportation agencies and Tribal governments within the region.

Check us out on social media:

- **Blog**  
<https://www.psrc.org/whats-happening>
- **Bluesky**  
[@psrc.bsky.social](https://bsky.social/@psrc)
- **Facebook**  
[facebook.com/  
PugetSoundRegionalCouncil](https://facebook.com/PugetSoundRegionalCouncil)
- **Instagram**  
[Instagram/soundregion](https://instagram/soundregion)
- **LinkedIn**  
[linkedin/soundregion](https://linkedin/soundregion)
- **Threads**  
[soundregion](https://threads/soundregion)
- **X**  
[@soundregion](https://x.com/soundregion)



## Map of the Cental Puget Sound Region







# Day 1

## Introduction to Planning

July 30, 2025

### SCHEDULE

**10:00 AM**

SPA Overview and Staff Introductions

**10:15 AM**

Welcome to SPA with  
Executive Director Josh Brown

**10:30 AM**

Blocks and Lots Game

**11:00 AM**

Intro to Planning Presentation and Lunch

**11:30 AM**

Community Assessment Field Trip

**1:30 PM**

Field Trip Debrief

**2:00 PM**

Capstone Introduction and Work Time

**3:00 PM**

End of Day

## DAY 1 QUESTIONS

1. Why should regional government agencies, local, and state, consider an area's demographics when planning? What type of data would they need?

---

---

---

2. What are the demographics of your community? Is the population growing? What are the largest age and race/ethnicity groups?

---

---

---

3. How does diversity play a role in shaping a community? What is your community like?

---

---

---

4. How do you think planners utilize income and education data about communities to inform public policy?

---

---

---



# Day 2 Transportation

August 1, 2025

## SCHEDULE

### 10:00 AM

Meet PSRC staff at Pier 50 Dock  
(south end of Colman Dock) in Seattle  
– 801 Alaskan Way, Seattle, WA 98104

### 10:20 AM

Ride Fast Ferry to Bremerton

### 11:00 AM

Transportation Data Workshop

### 12:15 PM

Lunch

### 1:00 PM

Bremerton Walking Tour

### 1:30 PM

Line Up for Ferry

### 1:50 PM

Ride Fast Ferry to Seattle

### 2:30 PM

Waterfront Tour

### 3:00 PM

End of Day



# DAY 2 QUESTIONS

1. How do workers commute in your Center?

---

---

---

2. What percentage of residents in your Center own or have access to a vehicle?

---

---

---

3. What transit modes are available in your group’s Regional Growth Center?  
(example: bus, light rail, commuter rail, streetcar, etc.)

---

---

---





# Day 3 Housing

August 6, 2025

## SCHEDULE

**10:00 AM**

Introduction to Housing

**10:30 AM**

Travel to Cedar Crossing

**11:00 AM**

Tour and information session with Mercy Housing, Bellwether Housing, and Sound Transit

**12:00 PM**

Lunch

**12:30 PM**

Travel back to PSRC

**1:00 PM**

Housing Data Workshop

**3:00 PM**

End of Day

## DAY 3 QUESTIONS

1. In your assigned Center, how has housing tenure (renters vs. owners) changed over the past ten years (2013–2023)? And how do these values compare to the other RGCs and the region?

---

---

---

2. In 2024, what is the most common housing unit type in your assigned Center? What is the least common housing type? Does this seem consistent with your experience during the walking tour?

---

---

---

3. In your assigned Center, are renters more or less severely cost burdened in 2023 compared to 2018 and 2013? Do renters seem to be more or less cost burdened in your assigned Center when compared to other Centers and the region?

---

---

---

4. Based on the answers to the questions above, do these data make sense when looking at the demographics (age, income, etc.) of this Center or do the results seem unusual?

---

---





# Day 4 Environmental Planning

August 8, 2025

## SCHEDULE

**10:00 AM**

Introduction to Environmental Planning

**10:20 AM**

Travel to Union Bay Natural Area

**11:00 AM**

Carousel Speaker Activity

**12:20 PM**

Lunch

**12:50 PM**

Travel Back to PSRC

**1:30 PM**

Reflections

**1:40 PM**

Environmental Data Workshop

**2:30 PM**

SPA Closing Ceremony

**3:00 PM**

End of Day

# DAY 4 QUESTIONS

1. What do you notice about the areas in your growth center that have the most and least amount of tree canopy and green space access?

---

---

---

2. Who in your regional growth center has access to or benefits from having green space access? Who has less access to green space?

---

---

---

3. How do you think the history of your regional growth center has impacted the prevalence (or lack) of tree canopy, green space, and urban heat effects?

---

---

---



# Open House

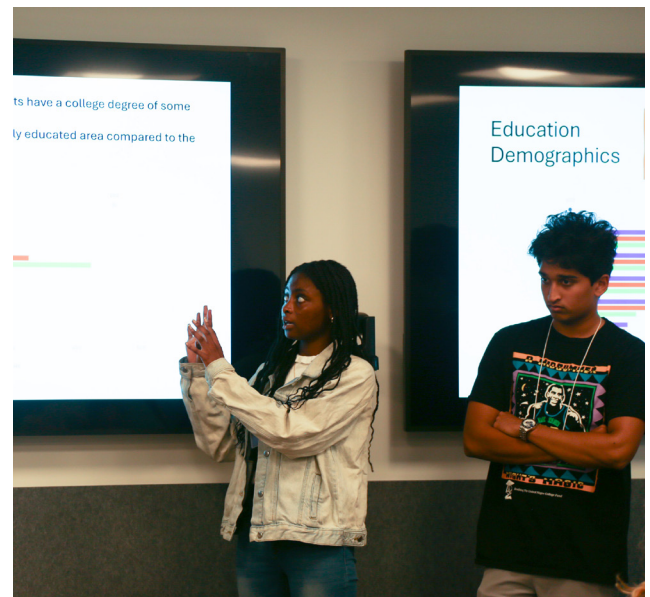
August 12, 2025 | 12:00 – 1:30 PM

PSRC invites all SPA students and their families to an optional Open House on Tuesday, August 12 from 12:00 – 1:30 p.m.

New this year, we will gather to spend some time hearing about the Capstone Projects the teams created during the academy and sharing their presentations with PSRC staff and family members.

Lunch will be provided, please RSVP to **Heather Culver** at [hculver@psrc.org](mailto:hculver@psrc.org) by **Friday, August 8, 2025**.

**We hope you can join us!**



## Notes

[illegible]