

# Regional Transportation Plan Engagement

Coordinated Mobility and Accessibility Committee • September 17, 2025



Puget Sound Regional Council



*We are leaders in the region to realize equity for all. Diversity, racial equity and inclusion are integrated into how we carry out all our work.*

[psrc.org/equity](https://psrc.org/equity)



# Agenda

- Partnership with Uncommon Bridges
- EAC Subcommittee
- RTP Engagement
- Next Steps and Questions



# RTP Scope of Work

Board feedback on policy priorities for the next plan have confirmed the commitment to:



# Partnership with Uncommon Bridges



**We are continuing our partnership with Uncommon Bridges for RTP Engagement:**

- Building momentum from RSAP
- Applying lessons learned
- Revisiting conversations from previous engagement cycle



# EAC RTP Subcommittee

Consultant partners are working with six EAC members to co-create the RTP engagement strategy.

- Monthly subcommittee meetings
- Shaping approach to engagement
- Facilitating Regional Public Meetings



# Planned RTP Public Engagement

**Community  
Events**

**Online  
Engagement Hub**

**Regional Public  
Meetings**

**Focus Groups &  
Stakeholder  
Interviews**

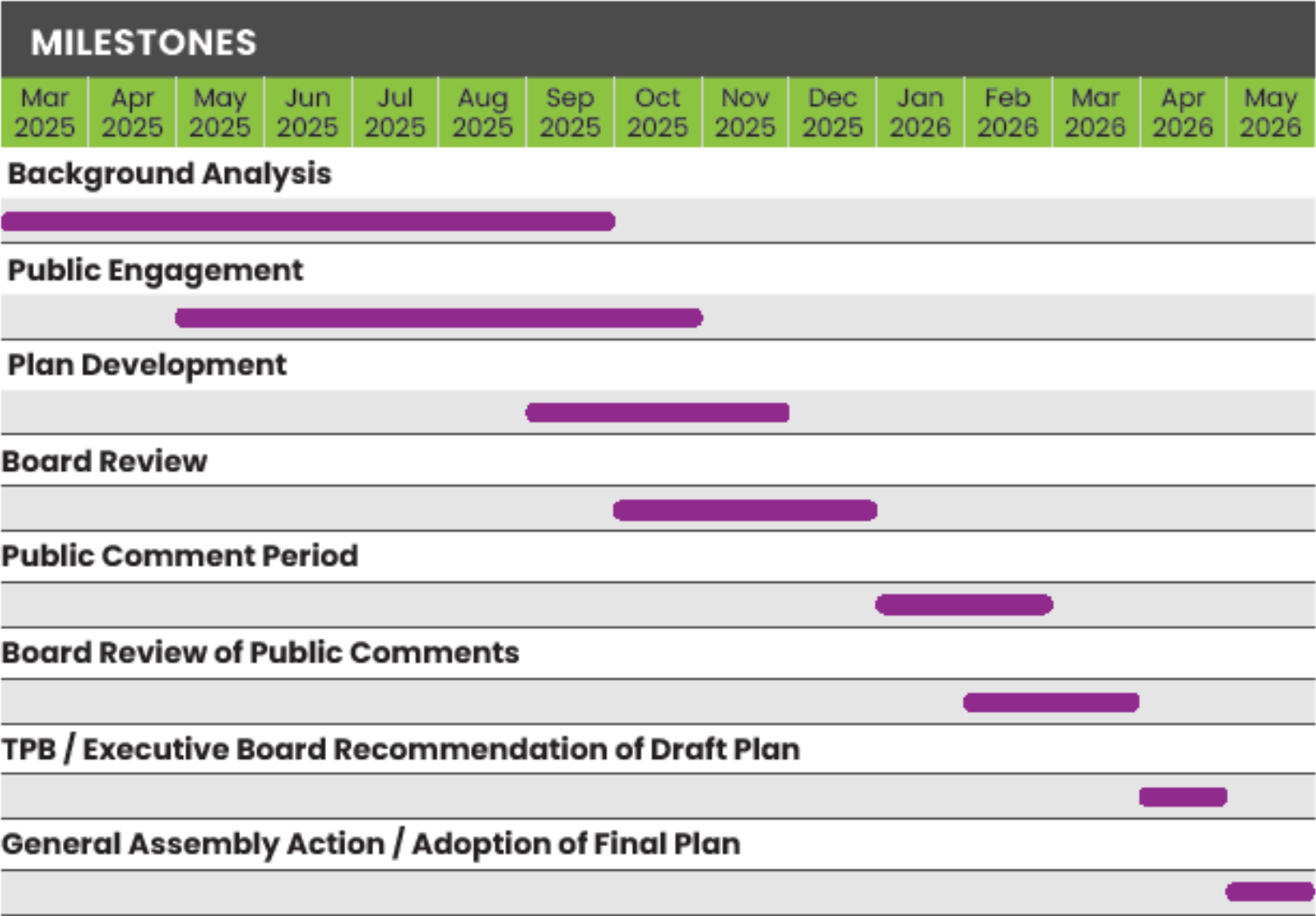
**PSRC Board/  
Committee  
Briefings**

**Public Comment  
Process**

**Public Opinion  
Survey**



# RTP Timeline



# Upcoming Community Events

## October:

- Edmonds Summer Market (10/04)





# Community Events












# Community Events

## Integrated Regional Transportation System



## What are your priorities for the transportation system?

-  Neighborhood transit service
-  Regional transit service
-  High speed rail
-  Reliable ferry service
-  Bicycle and pedestrian infrastructure
-  Maintenance of roads and highways
-  Electric vehicle charging
-  Expanded air travel
-  Fast, secure deliveries



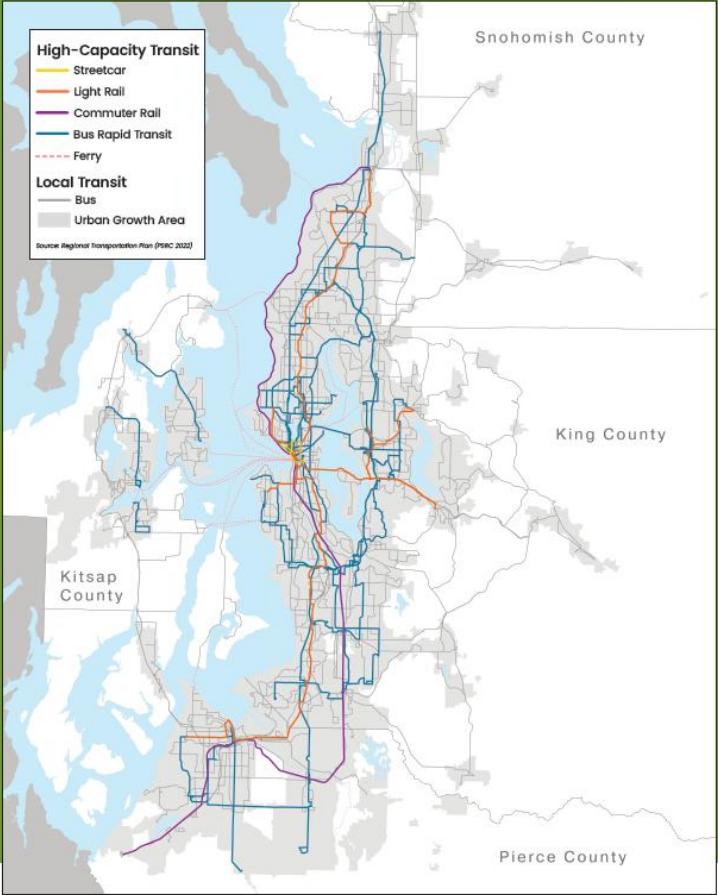


# Community Events

What is the  
most important  
transportation issue  
in your community?

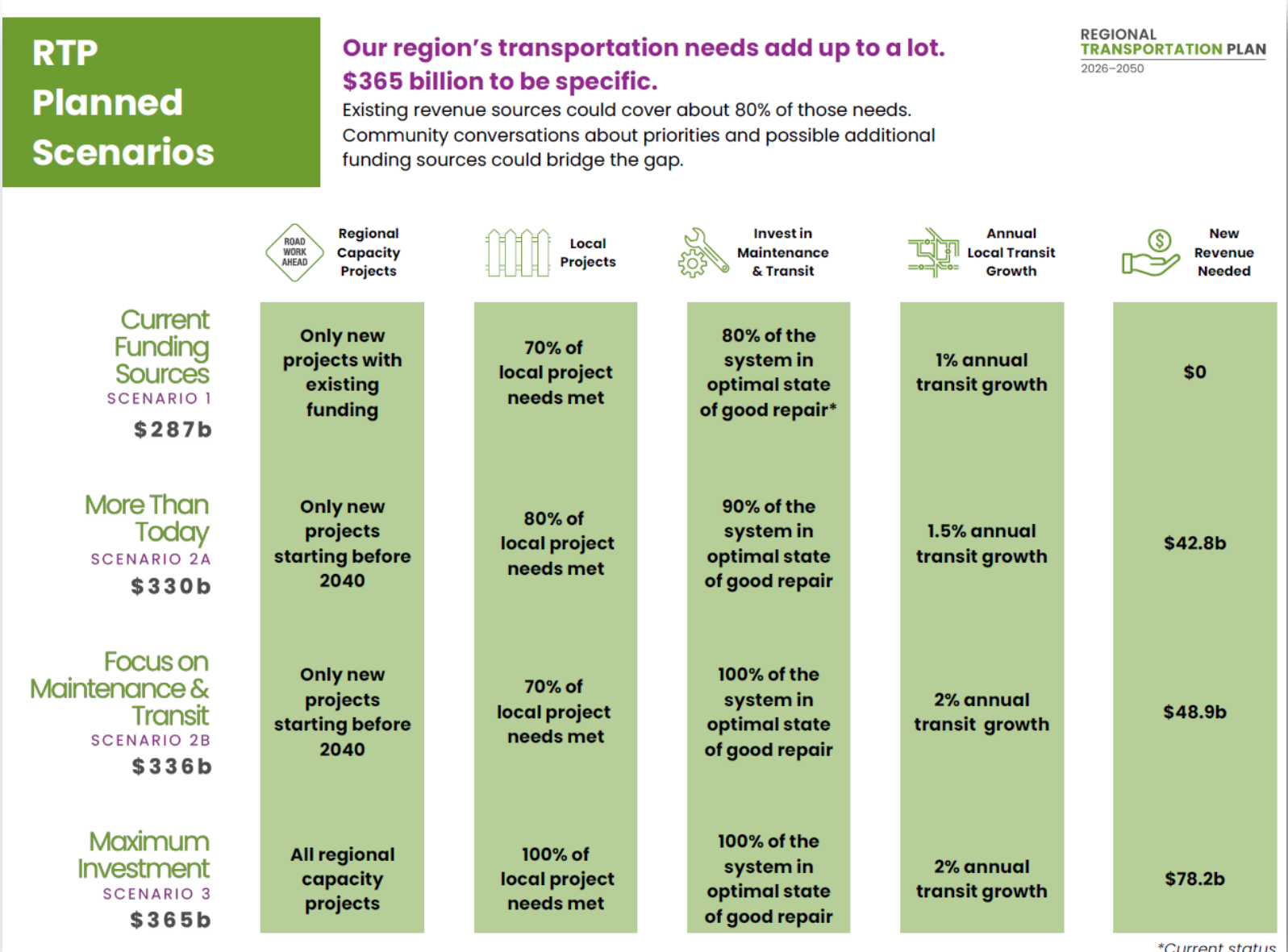


## Central Puget Sound Future High-Capacity Transit Network by 2050





# Public Meeting Materials



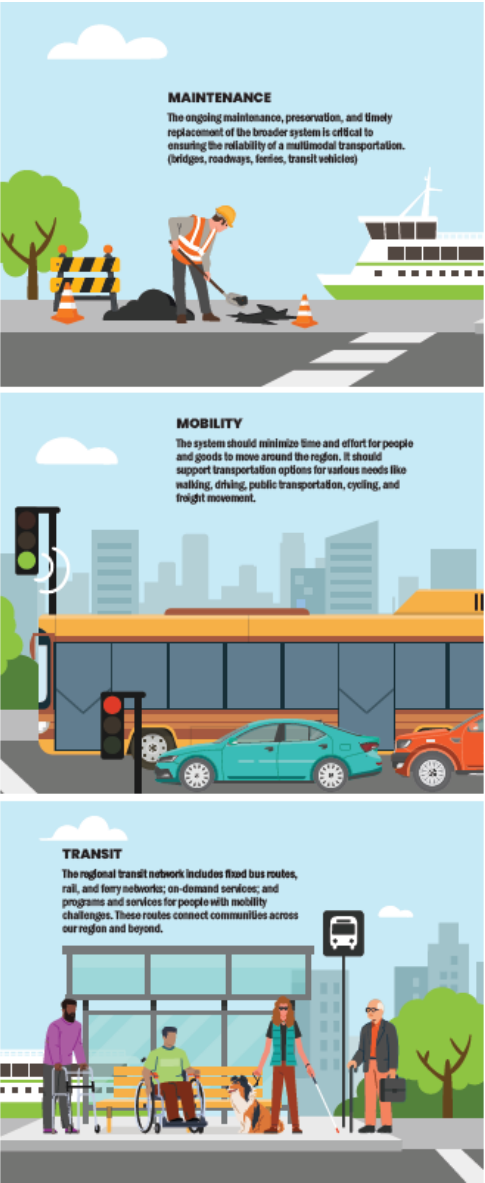
# Public Meeting Materials

## What does the plan cover?

VISION 2050 lays out a goal for the region's transportation system, providing direction for the Regional Transportation Plan (RTP):

The region has a sustainable, equitable, affordable, safe, and efficient multimodal transportation system, with specific emphasis on an integrated regional transit network that supports the Regional Growth Strategy and promotes vitality of the economy, environment, and health.

Among other things, the plan prioritizes maintenance, mobility, and transit.



## How does the process work?



## ENGAGEMENT



### THE PUBLIC

Community members play a crucial role in shaping the plan by sharing their challenges, needs, and priorities. Their insights are critical to ensuring that the solutions proposed are effective and fair, reflecting the values and aspirations of the community.



### ADVOCACY GROUPS

Advocacy groups represent important community interests. Their input is used to help identify transportation challenges and ensure that investments reflect the needs of underserved populations. This fosters a more inclusive and connected future for everyone.



### TRIBES

The Coast Salish Tribes have lived here since time immemorial. Tribal nations enrich the region through environmental stewardship, cultural heritage, and economic development, and collaborate with local governments to shape the region's future.



### STATE & LOCAL GOVERNMENTS

PSRC supports the coordinated strategy and collaboration between local governments. By providing funding and implementing effective strategies, government actors ensure seamless coordination across different areas of our transportation system.



### TRANSIT AGENCIES & PORTS

Public transit agencies and ports execute planned expansions of our high-capacity transit, airports, and cargo ports. With major system improvements planned for transit and initiatives to enhance access for non-motorized transportation, these agencies are essential for ensuring comprehensive mobility and connectivity throughout the region.



# Regional Public Meeting Schedule

## King County:

- Downtown Seattle Public Library (09/04)
- Tukwila Community Center (10/23)

## Snohomish County:

- Everett Train Station (9/18)

## Pierce County:

- Pioneer Park Pavilion (10/02)
- Point Defiance Pagoda (10/16)

## Kitsap County:

- Marvin Williams Recreation Center (10/30)





# Join us at a Regional Public Meeting!



# Complete our survey!



# Next Steps

## RTP Engagement:

- Online engagement hub – Live now
- Community tabling – May through Fall 2025
- Regional Public Meetings – Fall 2025
- Focus groups and stakeholder interviews – Fall 2025

**Winter 2025–Early 2026:** Draft plan released







# Thank You!

Noah P. Boggess

Senior Public Engagement  
Specialist

[nbogess@psrc.org](mailto:nbogess@psrc.org)



Puget Sound Regional Council