

# Regional Transportation Plan Scenario Analysis Results

Regional Staff Committee  
September 18, 2025



Puget Sound Regional Council



*We are leaders in the region to realize equity for all. Diversity, racial equity and inclusion are integrated into how we carry out all our work.*

[psrc.org/equity](https://psrc.org/equity)

# Today's Discussion – RTP Scenario Analysis Results

- Review of Scenario development process
- Overview of analysis – what's included, and what is not
- Summary results and comparison of Scenarios
- Board discussion and feedback
- Schedule and next steps





# RTP Available Revenues vs. Proposed Expenditures

Gap between available revenues and proposed expenditures = 21%

Sponsor Type	NEEDS				REVENUES			Revenue Gap	% of Revenue Gap
	Maintenance, Preservation and Operations	System Improvements		Total	Current Law	New Revenue	Total		
		Regional Capacity Projects	Other Improvements						
Counties	\$17,900	\$5,200	\$2,800	\$25,900	\$16,600	\$0	\$16,600	\$9,300	12%
Cities	\$45,300	\$8,500	\$23,200	\$77,000	\$41,700	\$0	\$41,700	\$35,300	45%
Local Transit	\$52,700	\$2,800	\$19,200	\$74,800	\$52,400	\$0	\$52,400	\$22,500	29%
Sound Transit	\$49,500	\$41,600	\$34,500	\$125,700	\$125,700	\$0	\$125,700	\$0	0%
WSF	\$11,300	\$0	\$6,100	\$17,300	\$11,400	\$0	\$11,400	\$6,000	8%
WSDOT	\$23,400	\$14,500	\$6,700	\$44,600	\$39,400	\$0	\$39,400	\$5,200	7%
Subtotal		\$72,700	\$92,500						
TOTAL	\$200,100	\$165,200		\$365,300	\$287,100	\$0	\$287,100	\$78,200	21%

All costs in 2026\$



# Investment Categories

## Proposed Investments

- **Regional Capacity Projects (\$72.7 billion total)**
  - Projects from cities, counties, ports, tribes, transit agencies and the state changing capacity on the regional system
  - Submitted from new comprehensive plans, current transit plans, new State Highway System Plan
  - Wide variety of investments meeting needs across modes, communities



# Investment Categories

## Proposed Investments

- **Programmatic System Improvements (\$92.5 billion total)**
  - Broad categories of investments from cities, counties, transit agencies and the state
    - E.g., local roads, sidewalks, bike lanes, signals, intersection improvements, etc.
  - Identified from new comprehensive plans, current transit plans, new State Highway System Plan– *all needed / desired investments to improve the system, projected through 2050*



# Investment Categories

## Proposed Investments

- **Maintenance, Preservation and Operations (\$200.1 billion total)**
  - Maximum investment = all asset categories are maintained, preserved and operated in a *full* state of good repair through 2050
  - Represents wide variety of assets and operations from cities, counties, transit agencies and the state
    - Includes estimates to address all backlogs, then maintain into the future; also includes operations of current transit system



# Board Discussions to Date

To address the gap between all proposed investments and available revenues:

- Majority consensus to pursue a balance between levels of investment and new revenues
  - Reviewed different levels of investment across all categories: regional capacity projects, programmatic system improvements, maintenance / preservation, growth in transit service
  - Reviewed different levels of new revenues



# Four Scenarios Advanced

**Scenario 1**  
Current Funding  
Sources

**Scenario 2A**  
More Than  
Today

**Scenario 2B\***  
Focus on  
Maintenance  
and Transit

**Scenario 3**  
Maximum  
Investment

\* Developed from Board polling





# Scenario 1 – Current Funding Sources

Regional Capacity  
Projects with some  
level of committed  
funding

Programmatic  
System  
Improvements at 70%  
of full unconstrained  
needs

No New  
Revenues  
required

Maintenance,  
Preservation and  
Operations at today's  
levels

Local Transit Service  
Growth at 1.0% per  
year



# Scenario 2A – More Than Today

Regional Capacity  
Projects starting  
before 2040

Programmatic  
System  
Improvements at 80%  
of full unconstrained  
needs

New Revenues  
required = \$42.8  
billion

Maintenance,  
Preservation and  
Operations at 90% of  
optimal levels

Local Transit Service  
Growth at 1.5% per  
year



# Scenario 2B – Focus on Maintenance and Transit

Regional Capacity  
Projects starting  
before 2040

Programmatic  
System  
Improvements at 70%  
of full unconstrained  
needs

New Revenues  
required = \$48.9  
billion

Maintenance,  
Preservation and  
Operations at full,  
optimal levels

Local Transit Service  
Growth at 2.0% per  
year



# Scenario 3 – Maximum Investment

All Regional Capacity  
Projects

Programmatic  
System  
Improvements at  
100% of identified  
needs

New Revenues  
required = \$78.2  
billion

Maintenance,  
Preservation and  
Operations at full,  
optimal levels

Local Transit Service  
Growth at 2.0% per  
year



# Additional Scenario Background

Information on *INPUTS* to the scenario analyses:

- 33% growth in both population and jobs by 2050
  - *1.4 million people, 740,000 jobs*
- Assumptions about a Road Usage Charge are not included in the scenario analyses
  - *Further discussions on the financial strategy will resume in October*





# Additional Scenario Background

Information on *OUTPUTS* for each scenario:

- Programmatic investments cannot be modeled, but qualitative comparison across scenarios are included
- An extensive suite of performance metrics will be included in the final plan
  - *Scenario results represent key metrics related to the board identified policy priorities*



# Summary of Scenario Analysis Results

## Overall:

- Levels of total investment across the four scenarios above the base year ranges from \$287 billion to \$365 billion
- Modest differences between scenarios for many of the modeled performance metrics
- Greater distinctions between scenarios from the spatial and qualitative measures



# Overall performance is similar by scenario

Metric	Scenario #1	Scenario #2a	Scenario #2b	Scenario #3
<b>VMT &amp; Delay</b>				
Daily Vehicle Miles Traveled	98,398,000	98,650,000	98,716,000	98,731,000
Daily VMT per Capita	17.0	17.0	17.1	17.1
Daily Vehicle Hours of Delay	339,000	332,000	332,000	333,000
Annual Delay per Capita	18.7	18.4	18.4	18.4
<b>Air Quality &amp; Climate</b>				
Greenhouse Gas Emissions	6,910	6,960	7,000	7,000
PM 2.5	0.79	0.79	0.79	0.79
<b>Active Transportation</b>				
Walk Trips	4,460,000	4,452,000	4,452,000	4,454,000
Bike Trips	391,000	390,000	391,000	391,000
Minutes Walking & Biking per day	14.2	14.2	14.2	14.2
<b>Safety</b>				
% of Projects on the High Injury Network	26%	55%	55%	63%



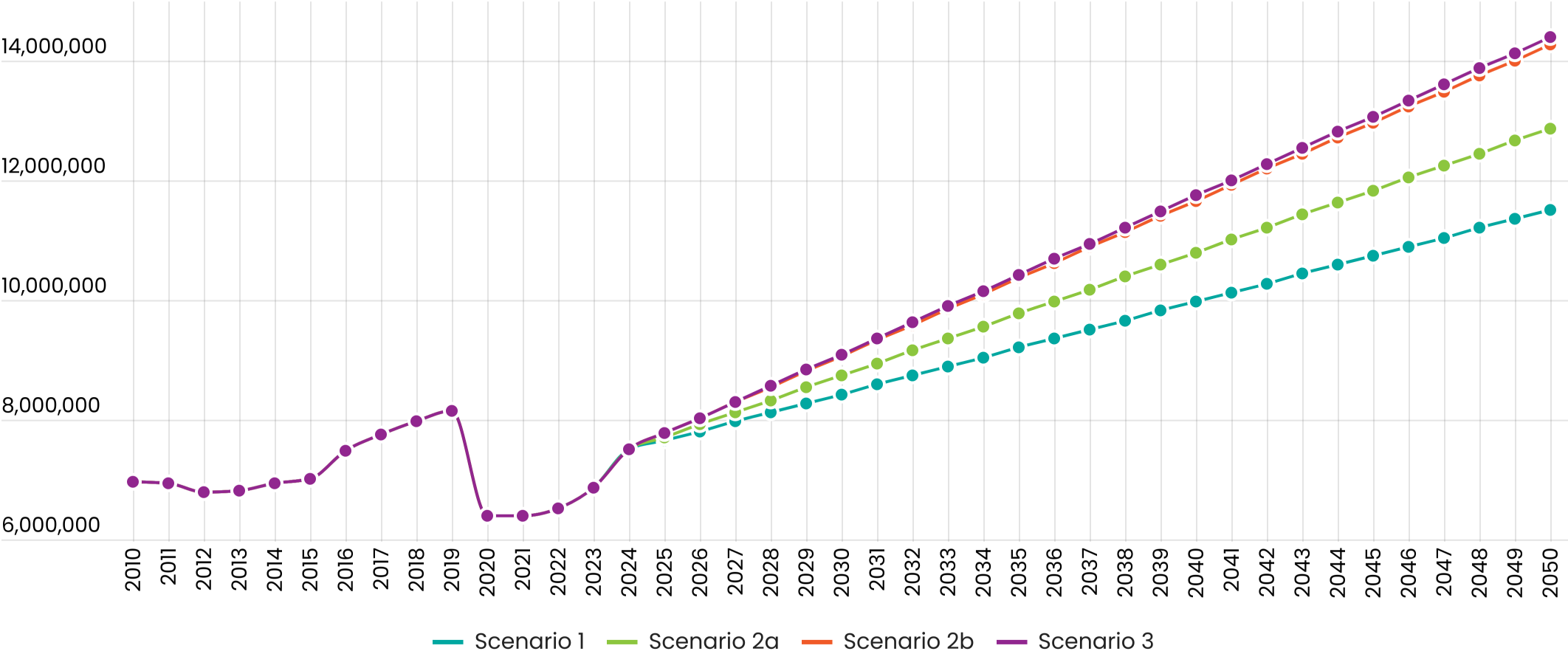
# Overall performance for trucks is similar by scenario

Metric	Scenario #1	Scenario #2a	Scenario #2b	Scenario #3
Daily Truck Trips	386,000	386,000	386,000	386,000
Annual Truck Delay per Trip	23.0	22.5	22.5	22.3
Daily Truck Miles per Trip	18.5	18.5	18.5	18.5
% of Freight Network with Severe Congestion	8.9%	8.5%	8.4%	8.4%



# Every scenario has significant growth in transit service

## Annual Revenue-Hours by Scenario



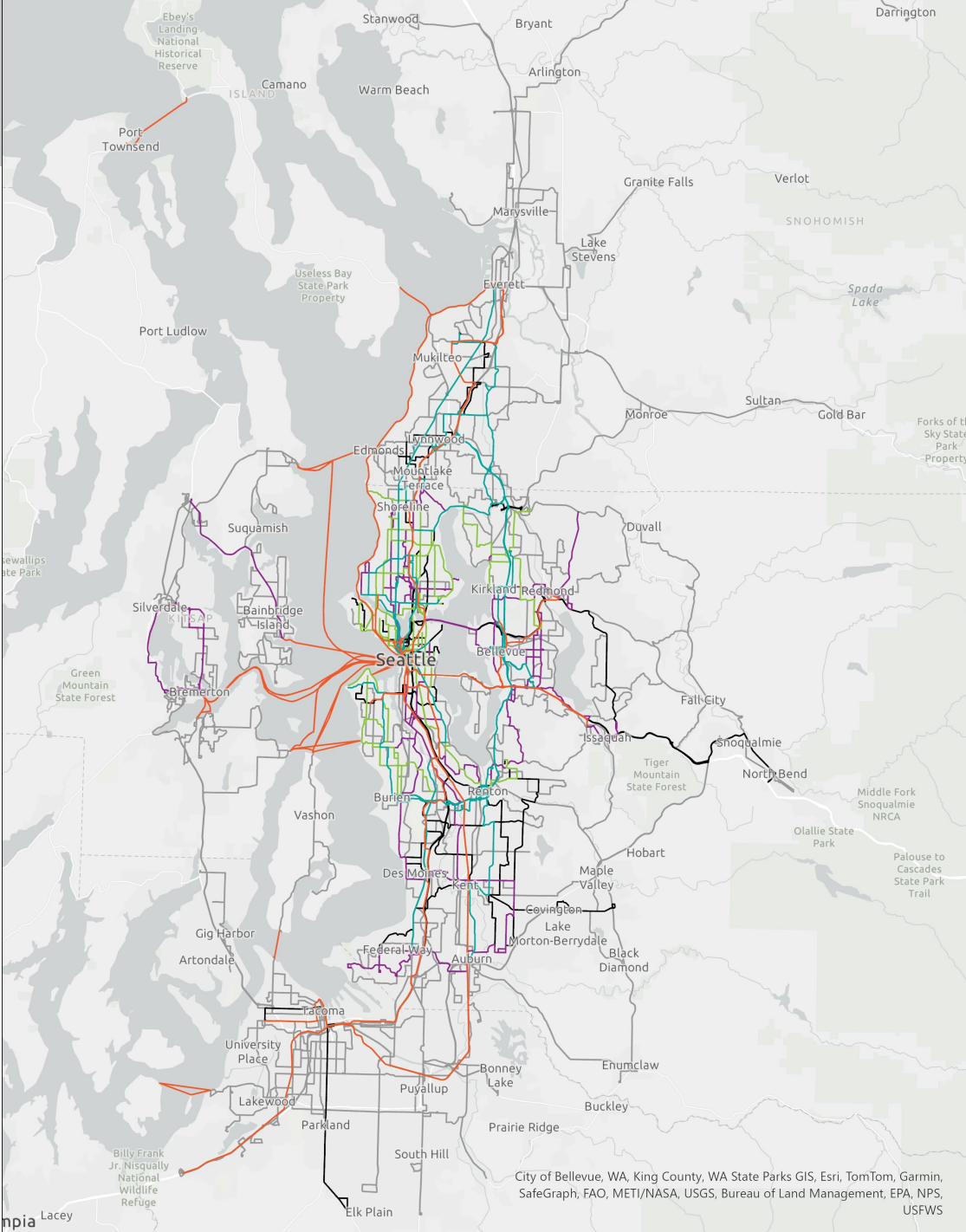
Source: PSRC SoundCast model & 2050 GTFS Inputs





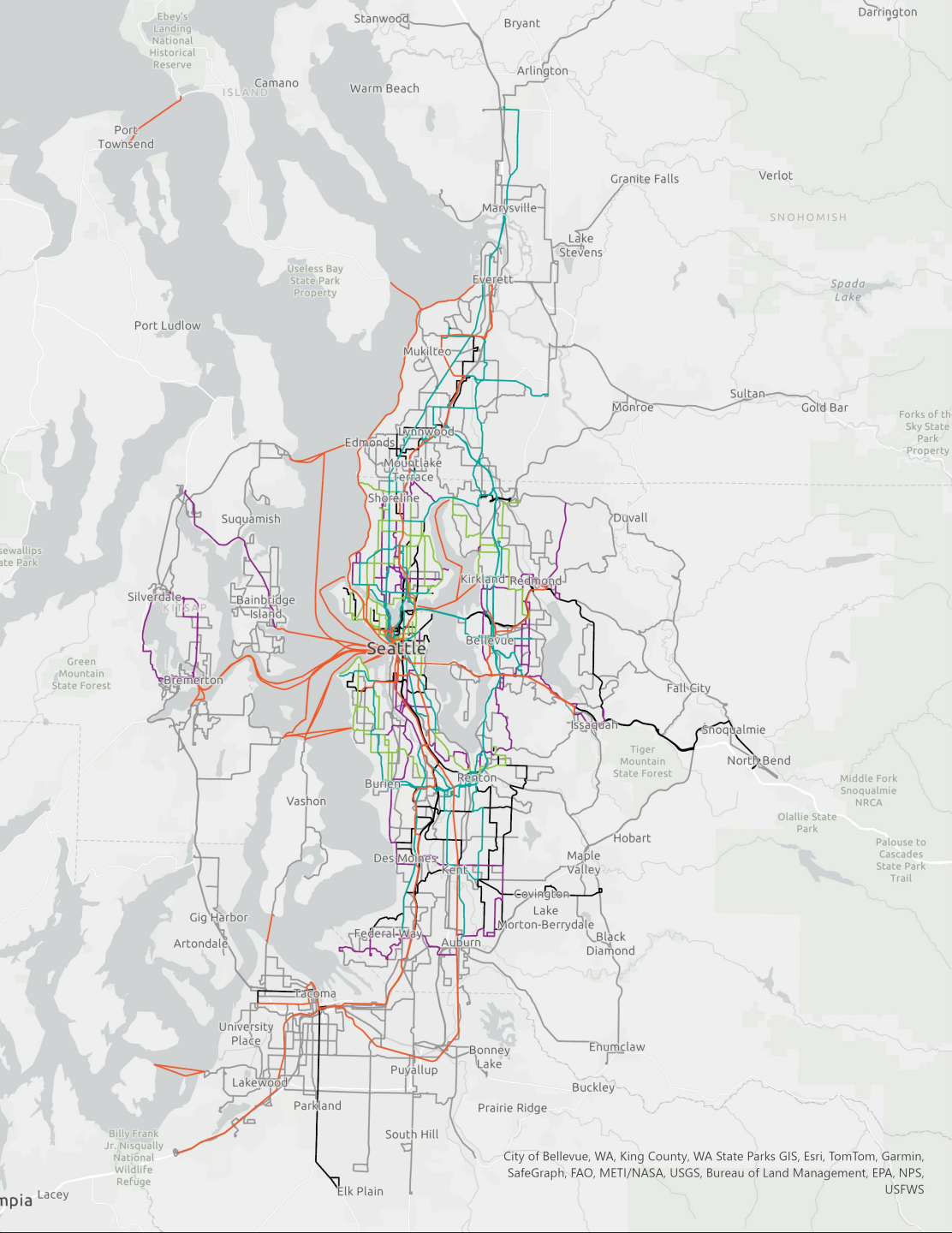
# Transit: Scenario 1

Metric	Today	Scenario #1	Change
Transit Routes			
Total Routes	307	316	9
Local Routes	104	104	-
All-Day Routes	28	64	36
Frequent Routes	43	43	-
BRT Routes	11	17	6
High-Capacity Transit Routes	27	33	6
Regional Transit Metrics			
Annual Revenue-Hours	7,517,640	11,522,000	53%
Annual Boardings	173,324,000	505,812,000	192%
Daily Transit Trips	351,000	1,010,000	188%
People in Transit Supportive Densities without Supportive Transit			
Gap near Local Transit	948,000	1,408,000	460,000
Gap near All-Day Transit	444,000	719,000	275,000
Gap near Frequent Transit	60,000	298,000	238,000
Gap near High-Capacity Transit	91,000	412,000	321,000



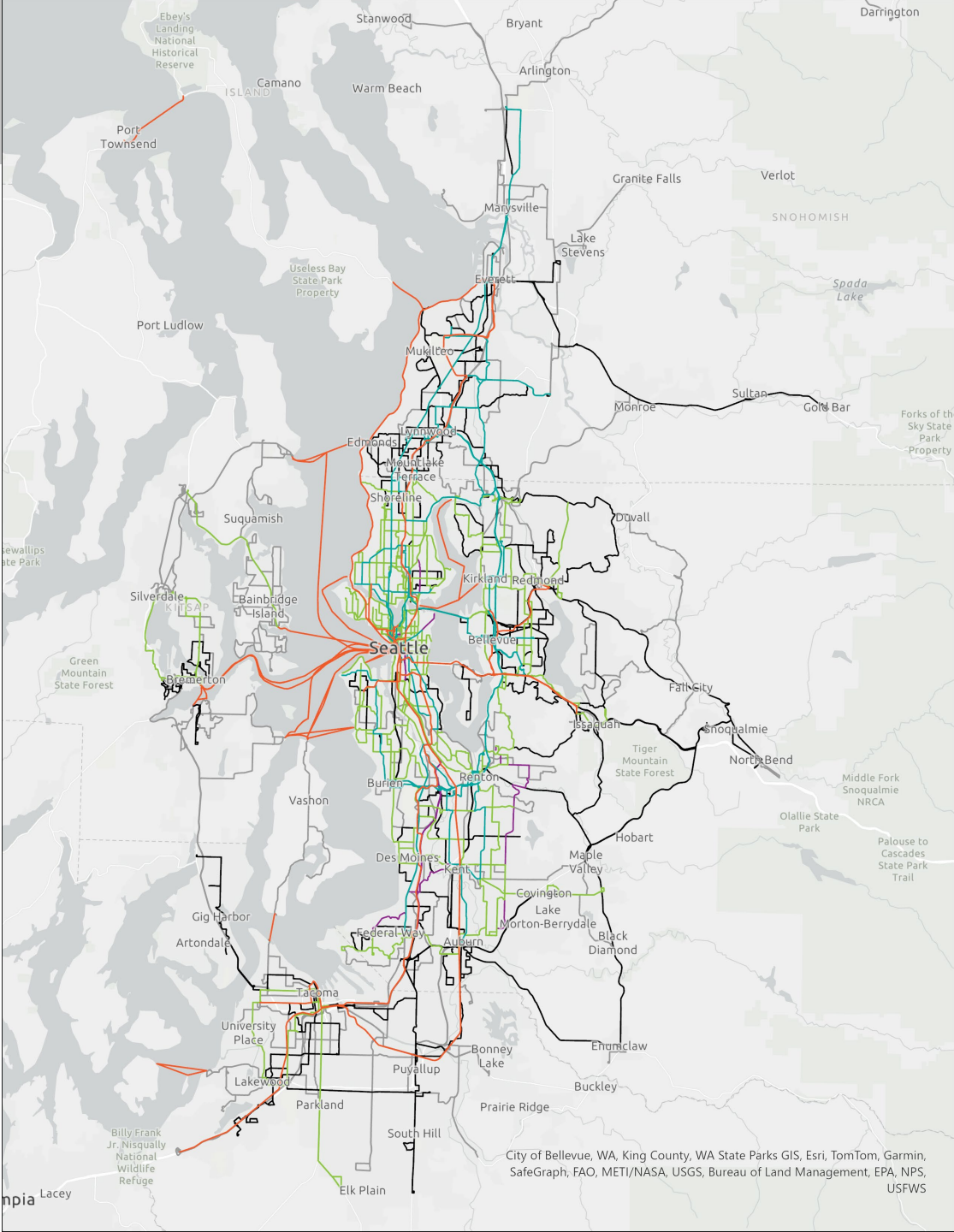
# Transit: Scenario 2a

Metric	Today	Scenario #2a	Change
Transit Routes			
Total Routes	307	319	12
Local Routes	104	107	3
All-Day Routes	28	66	38
Frequent Routes	43	47	4
BRT Routes	11	22	11
High-Capacity Transit Routes	27	36	9
Regional Transit Metrics			
Annual Revenue-Hours	7,517,640	12,874,000	71%
Annual Boardings	173,324,000	530,798,000	206%
Daily Transit Trips	351,000	1,036,000	195%
People in Transit Supportive Densities without Supportive Transit			
Gap near Local Transit	948,000	1,324,000	376,000
Gap near All-Day Transit	444,000	661,000	217,000
Gap near Frequent Transit	60,000	248,000	188,000
Gap near High-Capacity Transit	91,000	412,000	321,000



# Transit: Scenario 2b

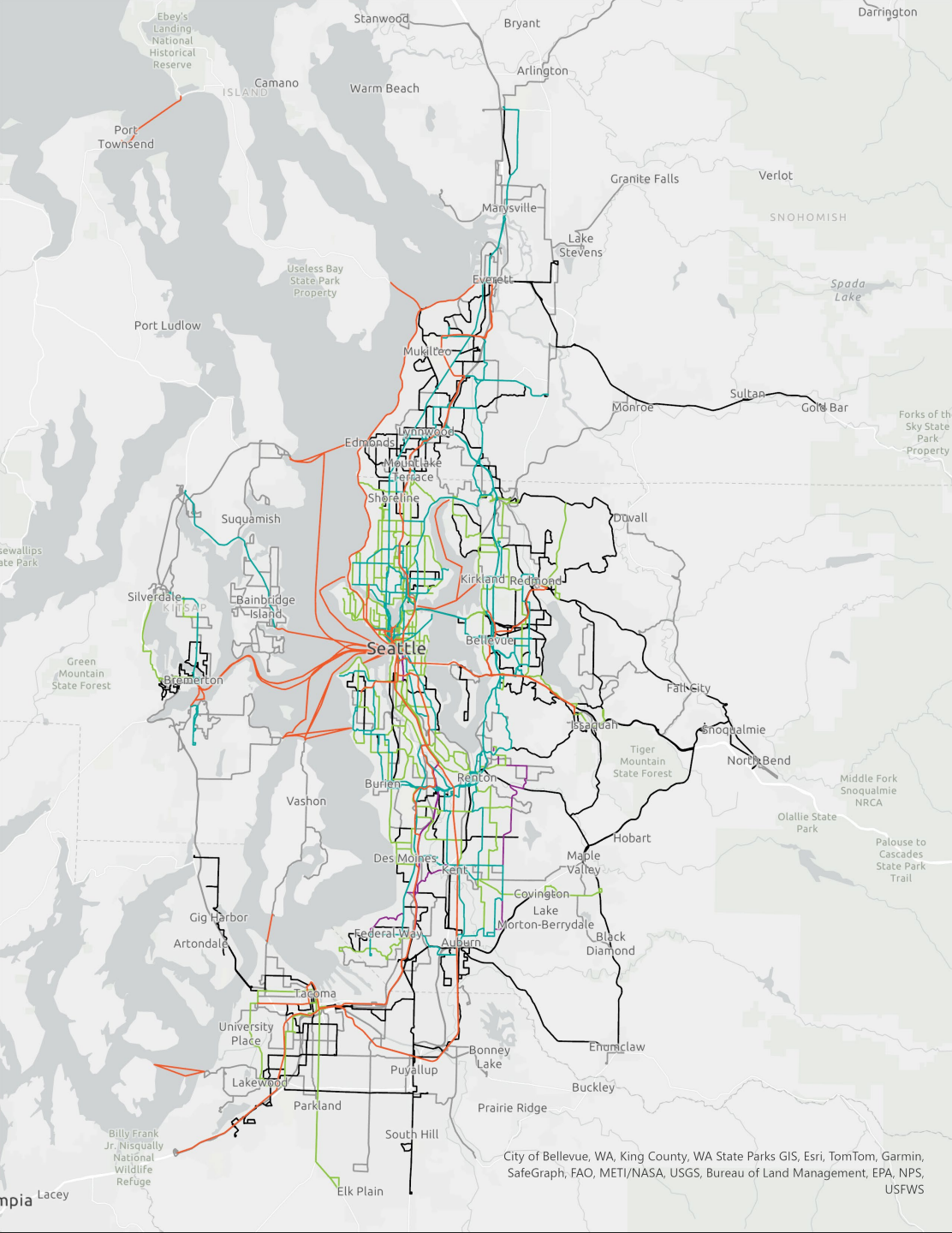
Metric	Today	Scenario #2b	Change
Transit Routes			
Total Routes	307	319	12
Local Routes	104	183	79
All-Day Routes	28	75	47
Frequent Routes	43	90	47
BRT Routes	11	22	11
High-Capacity Transit Routes	27	36	9
Regional Transit Metrics			
Annual Revenue-Hours	7,517,640	14,278,000	90%
Annual Boardings	173,324,000	531,423,000	207%
Daily Transit Trips	351,000	1,032,000	194%
People in Transit Supportive Densities without Supportive Transit			
Gap near Local Transit	948,000	639,000	-309,000
Gap near All-Day Transit	444,000	651,000	207,000
Gap near Frequent Transit	60,000	105,000	45,000
Gap near High-Capacity Transit	91,000	412,000	321,000





# Transit: Scenario 3

Metric	Today	Scenario #3	Change
Transit Routes			
Total Routes	307	319	12
Local Routes	104	183	79
All-Day Routes	28	76	48
Frequent Routes	43	93	50
BRT Routes	11	34	23
High-Capacity Transit Routes	27	36	9
Regional Transit Metrics			
Annual Revenue-Hours	7,517,640	14,407,000	92%
Annual Boardings	173,324,000	531,422,000	207%
Daily Transit Trips	356,000	1,028,000	193%
People in Transit Supportive Densities without Supportive Transit			
Gap near Local Transit	948,000	639,000	-309,000
Gap near All-Day Transit	444,000	649,000	205,000
Gap near Frequent Transit	60,000	105,000	45,000
Gap near High-Capacity Transit	91,000	412,000	321,000



# Comparison of transit across scenarios

Metric	Scenario #1	Scenario #2a	Scenario #2b	Scenario #3
<b>Percentage above Today</b>				
Transit Service Hours	53.4%	71.4%	90.0%	91.5%
Transit Trips	183.7%	191.3%	189.9%	188.8%
<b>Total increase in people within 1/4 mile of High-Capacity Transit</b>				
Total People	109,000	127,000	127,000	178,000
People of Color	219,000	250,000	250,000	303,000
People with Lower Incomes	191,000	222,000	222,000	267,000
People with Limited English	174,000	203,000	203,000	244,000
People with a Disability	170,000	201,000	201,000	242,000
Older adults	132,000	147,000	147,000	174,000
Youth	50,000	67,000	67,000	92,000
<b>Transit Supportive Densities and Gaps in Service</b>				
Gap within 1/4 mile of Local Transit	1,408,000 (33%)	1,324,000 (31%)	639,000 (15%)	639,000 (15%)
Gap within 1/4 mile of All-Day Transit	719,000 (28%)	661,000 (26%)	651,000 (25%)	649,000 (25%)
Gap within 1/4 mile of Frequent Transit	298,000 (17%)	248,000 (14%)	105,000 (6%)	105,000 (6%)
Gap within 1/4 mile of High-Capacity Transit	412,000 (33%)	412,000 (33%)	412,000 (33%)	412,000 (33%)





# Upcoming Work

October:

- Transportation Policy Board *ACTION* on investment and funding portfolio
- Continue detailed discussions on financial strategy and new revenue sources
- Briefing on the regional Comprehensive Climate Action Plan



# Upcoming Work

## November:

- Continue financial strategy discussions as necessary
- Briefing on six regional public meetings and other outreach activities
- Review additional details of future transportation system
- Discuss key findings and potential action items for the plan



# Upcoming Work

December:

- Continue discussion of key findings and potential action items for the plan
- *TRANSPORTATION POLICY BOARD AUTHORIZES STAFF TO RELEASE THE DRAFT PLAN FOR PUBLIC COMMENT*



# Upcoming Work

January through April 2026:

- Review of public comments
- Finalize plan document, including any actions, messages, identification of priorities
- *APRIL 2026 ACTION* by Transportation Policy Board and Executive Board recommending adoption of the final Regional Transportation Plan

✓ May 2026 General Assembly adoption



# Plan Development / What's New

- Scope of work reflecting current policy priorities
- Investments based on new comprehensive plans, current transit plans, new State Highway System Plan
- Updated plan consistency framework applied to all regional capacity projects
- Reassessment of financial strategy
- Evaluation of plan scenarios
- Regional Safety Action Plan
- Regional Comprehensive Climate Action Plan





# New Approach for Plan Document

Current Plan =

- >200 pages
- Pdf documents
- 11 appendices
- Additional resources = web maps, etc.

## Regional Transportation Plan and Appendices

- [Regional Transportation Plan](#) (PDF)
- [Appendix A: Transportation System Inventory](#) (PDF)
- [Appendix B: Coordinated Mobility Plan](#) (PDF)
- [Appendix C: Maintenance & Preservation](#) (PDF)
- [Appendix D1: Administrative Procedures](#) (PDF)
- [Appendix D2: Regional Capacity Project List](#) (PDF)
- [Appendix E: Public Outreach & Engagement](#) (PDF)
- [Appendix F: Regional Equity Analysis](#) (PDF)
- [Appendix G: Air Quality Conformity](#) (PDF)
- [Appendix H: System Performance](#) (PDF)
- [Appendix I: Modeling Tools](#) (PDF)
- [Appendix J: Financial Strategy](#) (PDF)



# New Approach for Plan Document

Proposal for a plan that is more:

- ✓ User friendly
- ✓ Readable
- ✓ Concise
- ✓ Dynamic

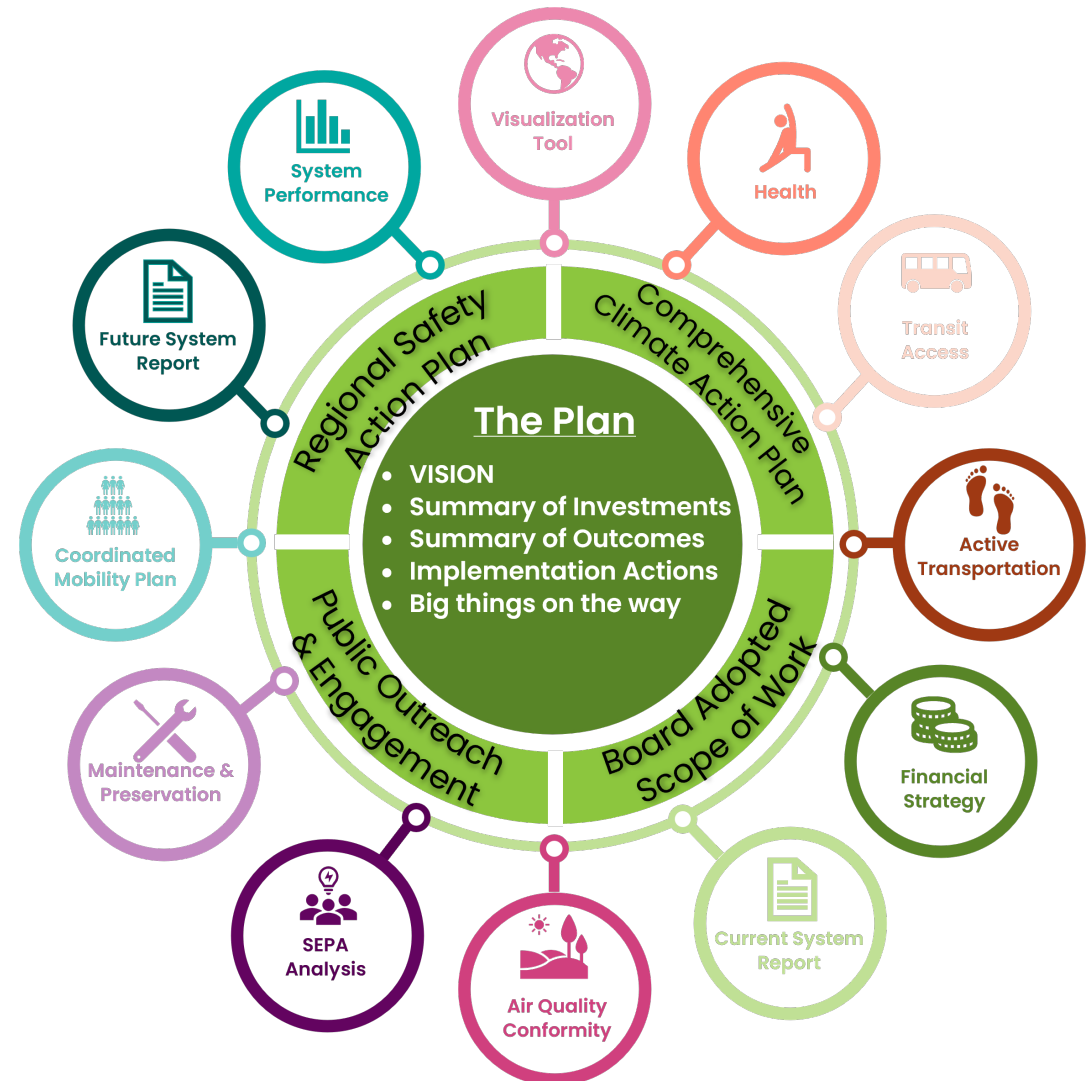
- ❑ A core plan document conveying the vision for the transportation system, outcomes achieved and action steps moving forward
- ❑ Key elements branching from the main plan with important details



# New Approach for Plan Document

- Cross cutting elements
- System features and key documents more easily found
- Web-based approach

For example:





# King County RTP Public Meeting- September 4





# RTP Public Meetings



**\*\*TONIGHT\*\*** September 18  
**Snohomish County** –Everett  
Station

October 2: **Pierce County**  
Pioneer Park Pavilion

October 16: **Pierce County**  
Point Defiance Pagoda

October 23: **King County**  
Tukwila Community Center

October 30: **Kitsap County**  
Marvin Williams Recreation Center

**RSVP** *All events take place in the  
evening, from 5:00 – 7:30 p.m.*



# Help us get the word out!

Share with community in newsletters, social media, at local meetings

Resources:

- [Outreach Toolkit](#)  
*Social media links, newsletter blurbs, graphics, videos*
- [Engagement Hub](#) – Survey
- [News post](#) with more information

