

Regional Transportation Plan Project Briefing

Growth Management Policy Board
October 2, 2025



Puget Sound Regional Council



We are leaders in the region to realize equity for all. Diversity, racial equity and inclusion are integrated into how we carry out all our work.

psrc.org/equity

Today's Discussion

- Overview of work to date
- Review of Scenario development process
- Transit inputs and metrics
- Regional Transit Access Assessment
- Schedule and next steps
- Public outreach and engagement



Work Completed to Date

February 2024 – July 2025:

- Key priorities for the next plan identified and scope of work adopted
- Parameters for new potential revenue sources identified
- Review of current transportation system and identification of “gaps” to where people and jobs are
- Review of proposed investments vs. available revenues through 2050
- Development of four plan scenarios at different levels of investment and funding



Scenario Development Process

There is a 21% funding gap between available revenues and all proposed investments through 2050

- Transportation Policy Board (TPB) consensus to pursue a balance between levels of investment and new revenues:
 - Reviewed different levels of investment across all categories: major regional projects, local programmatic system improvements, maintenance & preservation, growth in transit service
 - Reviewed different levels of new revenues



Four Scenarios Advanced into Analysis

Scenario 1
Current Funding
Sources

No New
Revenues
required

Scenario 2A
More Than
Today

New
Revenues
required =
\$42.8 billion

Scenario 2B
Focus on
Maintenance
and Transit

New
Revenues
required =
\$48.9 billion

Scenario 3
Maximum
Investment

New
Revenues
required =
\$78.2 billion



Summary of Scenario Analysis Results

Overall:

- Levels of total investment across the four scenarios above the base year ranges from **\$287 billion** to **\$365 billion**
- Modest differences between scenarios for many of the modeled performance metrics
- Greater distinctions between scenarios from the spatial and qualitative measures



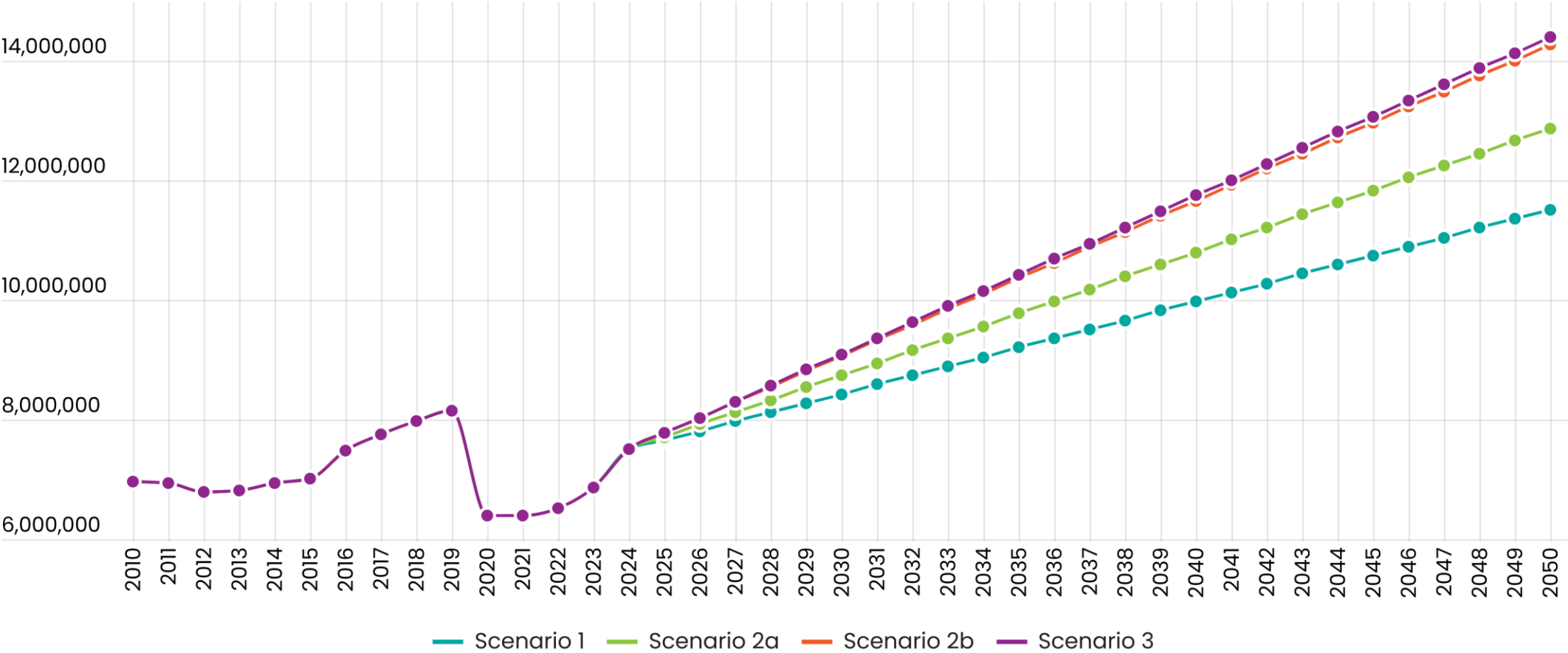
Overall performance is similar by scenario

Metric	Scenario #1	Scenario #2a	Scenario #2b	Scenario #3
VMT & Delay				
Daily Vehicle Miles Traveled	98,398,000	98,650,000	98,716,000	98,731,000
Daily VMT per Capita	17.0	17.0	17.1	17.1
Daily Vehicle Hours of Delay	339,000	332,000	332,000	333,000
Annual Delay per Capita	18.7	18.4	18.4	18.4
Air Quality & Climate				
Greenhouse Gas Emissions	6,910	6,960	7,000	7,000
PM 2.5	0.79	0.79	0.79	0.79
Active Transportation				
Walk Trips	4,460,000	4,452,000	4,452,000	4,454,000
Bike Trips	391,000	390,000	391,000	391,000
Minutes Walking & Biking per day	14.2	14.2	14.2	14.2
Safety				
% of Projects on the High Injury Network	26%	55%	55%	63%



Every scenario has significant growth in transit service

Annual Revenue-Hours by Scenario



Source: PSRC SoundCast model & 2050 GTFS Inputs



Comparison of transit across scenarios

Metric	Scenario #1	Scenario #2a	Scenario #2b	Scenario #3
Percentage above Today				
Transit Service Hours	53.4%	71.4%	90.0%	91.5%
Transit Trips	183.7%	191.3%	189.9%	188.8%
Total increase in people within 1/4 mile of High-Capacity Transit				
Total People	329,000	378,000	378,000	482,000
People of Color	219,000	250,000	250,000	303,000
People with Lower Incomes	191,000	222,000	222,000	267,000
People with Limited English	174,000	203,000	203,000	244,000
People with a Disability	170,000	201,000	201,000	242,000
Older adults	132,000	147,000	147,000	174,000
Youth	50,000	67,000	67,000	92,000
Transit Supportive Densities and Gaps in Service				
Gap within 1/4 mile of Local Transit	1,408,000 (33%)	1,324,000 (31%)	639,000 (15%)	639,000 (15%)
Gap within 1/4 mile of All-Day Transit	719,000 (28%)	661,000 (26%)	651,000 (25%)	649,000 (25%)
Gap within 1/4 mile of Frequent Transit	298,000 (17%)	248,000 (14%)	105,000 (6%)	105,000 (6%)
Gap within 1/4 mile of High-Capacity Transit	412,000 (33%)	412,000 (33%)	412,000 (33%)	412,000 (33%)



Regional Transit Access Assessment Update

- Continued work with consultant team to develop the regional assessment for RTP.
- Application of a methodology that accounts for the comprehensive set of elements relating to transit access.
 - Based upon PSRC's existing transit access tools.
- Currently incorporating future system data to assess difference between current system and future system with growth.



Upcoming Work

October:

- TPB **ACTION** on investment and funding portfolio

October & November:

- Continue discussions on financial strategy and new revenue sources

December:

- *TRANSPORTATION POLICY BOARD AUTHORIZES STAFF TO RELEASE THE DRAFT PLAN FOR PUBLIC COMMENT*



Upcoming Work

January through April 2026:

- Review of public comments
- Finalize plan document, including any actions, messages, identification of priorities
- *APRIL 2026 ACTION* by Transportation Policy Board and Executive Board recommending adoption of the final Regional Transportation Plan

✓ May 2026 General Assembly adoption



Plan Development / What's New

- Scope of work reflecting current policy priorities
- Investments based on new comprehensive plans, current transit plans, new State Highway System Plan
- Updated plan consistency framework applied to all regional capacity projects
- Reassessment of financial strategy
- Evaluation of plan scenarios
- Regional Safety Action Plan
- Regional Comprehensive Climate Action Plan

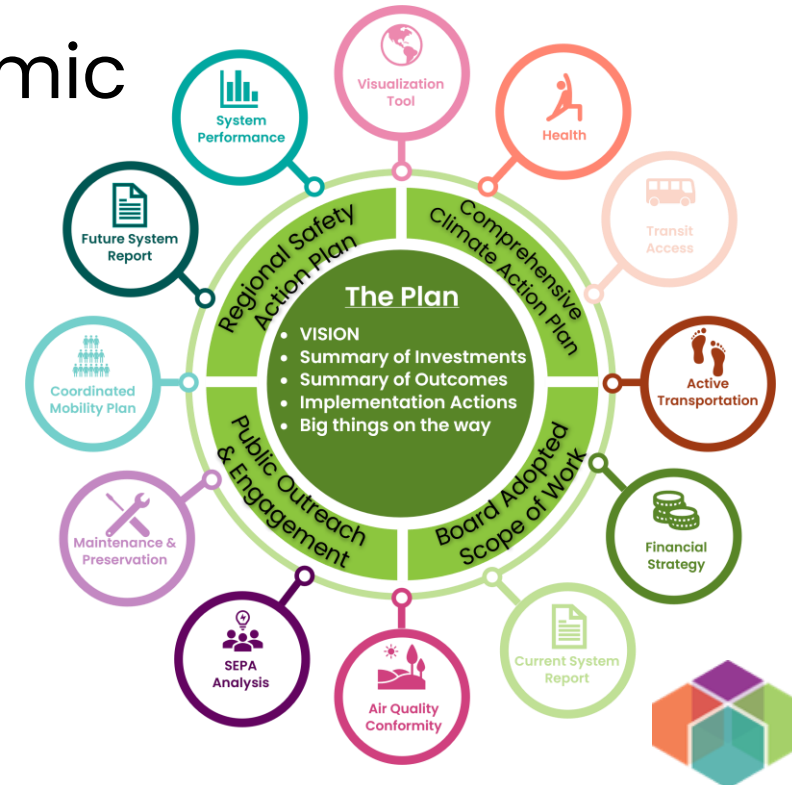


New Approach for Plan Document

Proposal for a plan that is more:

- ✓ User friendly
- ✓ Readable
- ✓ Concise
- ✓ Dynamic

- ❑ A core plan document conveying the vision for the transportation system, outcomes achieved and action steps moving forward
- ❑ Key elements branching from the main plan with important details



RTP Public Meetings: 5:00pm–7:30pm

September 4: Seattle Central Public Library

September 18: Everett Station

October 2: Puyallup, Pioneer Park Pavilion

October 16: Tacoma, Point Defiance Pagoda

October 23: Tukwila Community Center

October 30: Bremerton, Marvin Williams Recreation Center



Help us get the word out!

RSVP!

Share with community in newsletters, social media, at local meetings

Resources:

- [Outreach Toolkit](#)
Social media links, newsletter blurbs, graphics, videos
- [Engagement Hub](#) – Survey
- [News post](#) with more information





Thank you!

Gil Cerise

Program Manager

gcerise@psrc.org



Puget Sound Regional Council