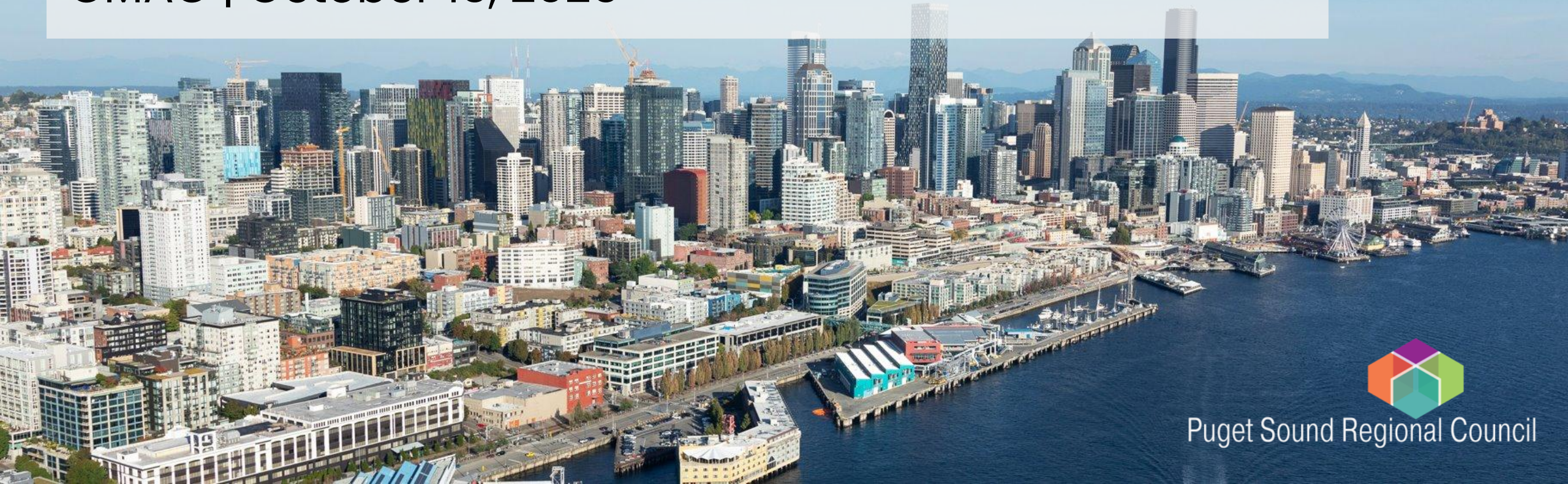


Coordinated Mobility Plan— Prioritized Strategies

CMAC | October 15, 2025



Puget Sound Regional Council



We are leaders in the region to realize equity for all. Diversity, racial equity and inclusion are integrated into how we carry out all our work.

psrc.org/equity

Today

Recap: Transportation Needs and Strategies

Review of Priorities (45 minutes)

- High vs. Other Discussion

Performance Measures (45 minutes)

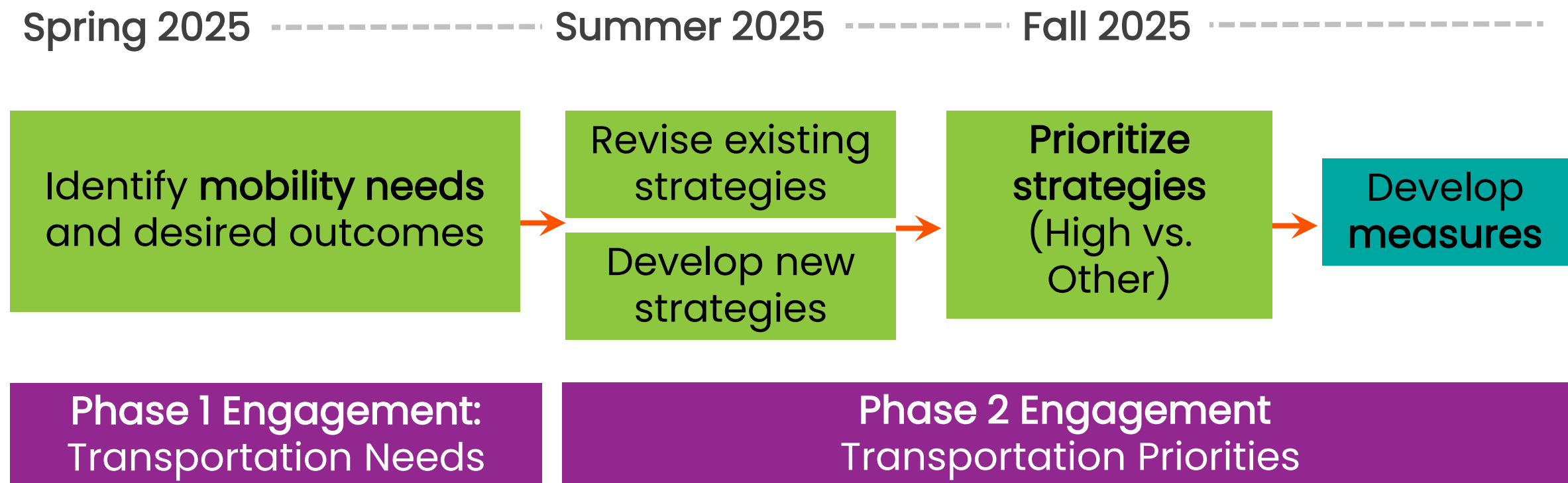
- Existing Measures and Discussion

Next Steps

Goal: build committee consensus on priorities of strategies to best address transportation needs



Coordinated Mobility Plan Development



Strategies

- **Strategies** are broad approaches to address mobility needs.
 - Each strategy must link to specific actions/activities
- Draft strategies and activities shared July–October for committee feedback

Thank you for taking a few minutes to review and respond to this survey.

At the September CMAC meeting, PSRC committed to providing a final opportunity for committee members to share feedback on the draft strategies and priorities for the Coordinated Mobility Plan.

Strategies are broad approaches to address mobility needs. Please review the strategy and associated priorities on each slide. There are twelve strategies in total.

Please complete this survey **by end-of-day Friday, October 10**. If you would prefer to review and respond using a Word document version of the survey, please email jkim@psrc.org.

Which County do you represent?



0
Pierce County



1
Kitsap County

4
Multi-County or Region



Summary of Menti Feedback

- PSRC sent out Mentimeter survey to collect additional feedback on strategies and potential actions from CMAC members & alternates.
- In general, committee members agreed with strategies and potential actions.
- Other comments mostly related to feasibility (time, cost, logistics) for some of the action items requiring coordination between transportation providers.
- PSRC staff will review language and make necessary minor edits.

Priorities (45 minutes)

High Priorities

Strategies that are **urgent and achievable**, recommended for near-term implementation

Other/Lower Priorities

Strategies that are **valuable but longer-term**, to advance as resources and capacity allow.

Setting priorities helps focus resources and implementation efforts (example: Regional Priority Ranking Process).

Today: Review and confirm **High Priorities** identified through community engagement and CMAC member survey.

Coordinated Mobility Plan Engagement

Phase 1:

Identified transportation needs of priority populations through community and stakeholder engagement

Phase 2:

Engaged advisory groups and community organizations to:

- Confirm transportation needs identified in Phase 1
- Gather input on transportation priorities from diverse communities

6

Mobility
Coalition
Meetings

20

Community
Meetings

600+

Participants



Phase 2: Community Engagement on Priorities

More accessible and safer infrastructure, including more amenities at transit stops (seating, lighting, shelters, and restrooms).

More rider education opportunities and awareness of available transportation services.

Improved access to healthcare, wellness, and other essential services.

Mobility coalitions further highlighted the need for:

Shorter wait times and more reliable transfers and return trips

More frequent and expanded transit service, especially during evenings, weekends, and other days/times needed the most

More sustainable, long-term funding is needed to support transportation programs serving priority populations

Discussion

Where do you see strong alignment between:

- Current and past priorities?
- Community and committee priorities?

High Priority: Which strategies are most ready for near-term implementation (funding, partners, capacity)?

Other Priority: Are there strategies that seem less urgent or could be addressed in future phases?

Are we missing any key populations or mobility gaps that should rise in priority?

Performance Measures

Performance measures are **indicators used to track progress** towards goals, objectives, and targets.

They show **whether our strategies are working**, highlight where adjustments are needed, and help demonstrate progress over time.

- The Coordinated Mobility Plan includes baseline data in some areas (e.g., service availability and coverage). However, there's a need to improve ongoing data collection, consistency across agencies, and capacity to measure improvements.

Today: Review metrics from the current plan and **brainstorm potential revisions or new metrics** that better reflect needs and priorities.

Discussion

Do these existing measures still make sense given today's needs and data sources?

- What data (quantitative or qualitative) could show progress?
- Are there data sources we could use instead of creating new ones?

Who is best positioned to:

- Implement the strategy?
- Collect or report on this data (e.g., transit agencies, human service providers, PSRC)?

Next Steps

RTP Engagement:

- Regional meetings – September–October 2025
- Focus groups and stakeholder interviews – Late Fall 2025

Coordinated Mobility Plan Engagement:

- Phase 2 (priorities and strategies) – June–October 2025
- October CMAC – performance measures

December 2025: Draft plan released for public comment





Thank You!

Jean Kim

Senior Planner

jkim@psrc.org

Erin Hogan

Associate Planner

ehogan@psrc.org



Puget Sound Regional Council