



# Central Puget Sound Demographic Profile





Funding for this document provided in part by member jurisdictions, grants from U.S. Department of Transportation, Federal Transit Administration, Federal Highway Administration and Washington State Department of Transportation. PSRC fully complies with Title VI of the Civil Rights Act of 1964 and related statutes and regulations in all programs and activities. For more information, or to obtain a Title VI Complaint Form, see <https://www.psrc.org/title-vi> or call 206-587-4819. Sign language, and communication material in alternative formats, can be arranged given sufficient notice by calling 206-464-7090, TTY Relay 711.

**American with Disabilities Act (ADA) Information:** Individuals requiring reasonable accommodations may request written materials in alternate formats, sign language interpreters, physical accessibility accommodations, or other reasonable accommodations by contacting the ADA Coordinator, Thu Le, at 206-464-6175, with two weeks' advance notice. Persons who are deaf or hard of hearing may contact the ADA Coordinator, Thu Le, through TTY Relay 711.

Additional copies of this document may be obtained by contacting:

Puget Sound Regional Council  
Information Center  
1011 Western Avenue, Suite 500  
Seattle, Washington 98104-1035  
206-464-7532  
Email: [info@psrc.org](mailto:info@psrc.org)  
Website: [www.psrc.org](http://www.psrc.org)

## Table of Contents

List of Tables .....	3
List of Figures .....	3
1 Introduction .....	4
2 Regional Data Profile .....	8
2.1 Race and Hispanic/Latinx Origin .....	8
2.2 Income .....	18
2.3 Sex and Household Type .....	29
2.4 Age.....	34
2.5 Ability.....	38
2.6 Zero-Vehicle Households.....	40
2.7 Language and Limited English Speaking Populations .....	42
3 Next Steps.....	49
Appendix A. Data Sources .....	1

## List of Tables

Table 1. Population by Race and Hispanic/Latinx Origin: 2019 .....	9
Table 2. Low-Income Populations: 2019.....	19
Table 3. Low Income Populations by Race and Hispanic/Latinx Origin: 2019 .....	23
Table 4. Median Household Income by Race and Hispanic/Latinx Origin: 2019 .....	24
Table 5. Income Characteristics of Asian Alone Populations: 2015-2019.....	27
Table 6. Low Income Populations by Race and Hispanic/Latinx Origin and Sex: 2019 .....	31
Table 7. Income Characteristics of Households by Type: 2019 .....	33
Table 8. Poverty Status for Population Age 65 and Over: 2019 .....	36
Table 9. Poverty Status for Population Under Age 18: 2019.....	37
Table 10. Poverty Status for Persons with a Disability: 2019 .....	39
Table 11. Zero-Vehicle Households: 2019 .....	41
Table 12. Common Languages Other Than English Spoken in the Central Puget Sound: 2019 .....	43
Table 13. Limited English Proficiency: 2019.....	46
Table 14. Ability to Speak English by Language Spoken at Home: 2019 .....	47

## List of Figures

Figure 1. Population by Race and Hispanic/Latinx Origin: 2019 .....	8
Figure 2. Population Change by Race and Hispanic/Latinx Origin: 2000-2019 .....	11
Figure 3. People of Color .....	12
Figure 4. American Indian and Alaska Native Population .....	13
Figure 5. Asian Population .....	14
Figure 6. Black or African American Population .....	15
Figure 7. Native Hawaiian and Other Pacific Islander Population .....	16
Figure 8. Hispanic/Latinx Population.....	17
Figure 9. Low-Income Populations: 2019 .....	18
Figure 10. Population Below 100% Poverty .....	20
Figure 11. Low-Income Population .....	21
Figure 12. Poverty Rates by Race and Hispanic/Latinx Origin: 2019.....	22
Figure 13. Median Household Income by Race and Hispanic/Latinx Origin: 2019 .....	25
Figure 14. People of Color and Low-Income Populations .....	28
Figure 15. Median Household Income, Seattle-Tacoma-Bellevue MSA: 2019.....	30
Figure 16. Poverty Rate for Older Adult Population Age 65 and Over: 2019 .....	34
Figure 17. Poverty Rate for Youth Population Age 5-17: 2019 .....	35
Figure 18. Poverty Rate for Persons with a Disability: 2019 .....	38
Figure 19. Zero-Vehicle Households by Householder: 2019 .....	40
Figure 20. Common Languages Spoken Other Than English: 2019 .....	42
Figure 21. Populations Speaking English Less Than “Very Well”: 2019 .....	45

# 1 Introduction

The Puget Sound Regional Council (PSRC) develops policies and coordinates decisions about regional growth, transportation, and economic development planning within the central Puget Sound region, comprised of King, Kitsap, Pierce and Snohomish counties. Having a better understanding of who lives in the region is imperative for doing this work. PSRC uses this demographic information to evaluate plans and policies for their potential outcomes for different populations and has provided tools, information, and guidance for local jurisdictions.

PSRC is the federally designated Metropolitan Planning Organization, as well as the state-designated Regional Transportation Planning Organization, for the central Puget Sound region. Under these mandates, PSRC is responsible for developing and regularly updating the region's long-range transportation plan, the [Regional Transportation Plan](#), as well as distributing federal transportation funds to local projects through its Transportation Improvement Program. In 2003, PSRC developed a baseline demographic profile as an initial step toward better integrating environmental justice into its transportation work program and has regularly provided updated data. This profile presents current demographic data describing the central Puget Sound region to identify population groups and communities to be considered for subsequent environmental justice analyses and activities.

This report provides demographic information at the county and regional scale by race, income, language access, ability and age. Maps and data tables provide more detail on the distribution of population groups, which can provide valuable information to PSRC and others on how to plan for different needs and population groups in the region.

## Objectives

PSRC set out to meet two primary objectives in preparing this environmental justice demographic profile:

- Compile key demographic data on people of color and people with low incomes in the central Puget Sound region, as well as other populations of interest, for environmental justice consideration in conducting regional transportation, economic development, and growth management planning and program activities and public outreach.
- Identify the locations of communities within the region with significant populations of people of color and people with low incomes to facilitate and enhance environmental justice analyses, outreach, and other planning activities.

## Direction on Environmental Justice

Since the mid- 1990s, a renewed emphasis on environmental justice has become an integral part of the transportation planning process for urban regions in the United States. The concept of “environmental justice” is derived from Title VI of the Civil Rights Act of 1964 and other civil rights statutes, and was first put forth as a national policy goal by presidential Executive Order 12898, issued in 1994, which directs “each federal agency to make achieving environmental justice part of its mission by identifying and addressing, as appropriate, disproportionately high and adverse human health or environmental effects of its programs, policies, and activities on minority populations and low-income populations.”

The U.S. Department of Transportation (DOT) responded to the directive with its DOT Order to Address Environmental Justice in Minority Populations and Low-Income Populations in 1997. The order laid out the following environmental justice principles to be integrated into federal transportation programs, policies, and activities:

- To avoid, minimize or mitigate disproportionately high and adverse human health and environmental effects, including social and economic effects, on minority and low-income populations.
- To ensure the full and fair participation by all potentially affected communities in the transportation decision-making process.
- To prevent the denial of, reduction in, or significant delay in the receipt of benefits by minority and low-income populations.

The DOT issued an updated internal Order in May 2012. DOT Order 5610.2(a) continues to be a key component of the department’s strategy to promote the principles of environmental justice in all departmental programs, policies and activities.

With this guidance, the Federal Highway Administration (FHWA) and Federal Transit Administration (FTA) renewed their commitments to ensure that environmental justice is carried out in the programs and strategies they fund including the activities of Metropolitan Planning Organizations (MPOs). The FHWA has specifically directed MPOs to:

- Enhance their analytical capabilities to ensure that their long-range transportation plan and their transportation improvement program comply with Title VI.
- Identify residential, employment, and transportation patterns of low-income and minority populations so that their needs can be identified and addressed, and the benefits and burdens of transportation investments can be fairly distributed.

- Evaluate and—where necessary—improve their public involvement processes to eliminate participation barriers and engage minority and low-income populations in transportation decision-making.

## Definitions

PSRC uses the following definitions for various demographic groups. These are inclusive of the groups identified in Executive Order 12898, and the DOT, FHWA and FTA orders on environmental justice. While the various orders on environmental justice require consideration of people of color and people with low income, discussions of other populations protected by Title VI and related nondiscrimination statutes are encouraged in addressing environmental justice and Title VI in federally sponsored transportation programs, policies and activities.

### People of Color

Individuals who report as any of the following racial/ethnic origin groups, some other race or two or more races. People of color are sometimes referred as “minority populations” in other PSRC publications or elsewhere.

Per the U.S. Census Bureau, racial categories included in the census questionnaire generally reflect a social definition of race recognized in this country and not an attempt to define race biologically, anthropologically, or genetically. People may choose to report more than one race to indicate their racial mixture, such as “American Indian and Alaska Native” and “white.” People who identify their origin as Hispanic, Latinx, or Spanish may be of any race. Data reporting of race and ethnic origin is based on self-identified responses to these questions.

- **American Indian and Alaska Native** – a person having origins in any of the original peoples of North and South America (including Central America) and who maintains Tribal affiliation or community attachment.
- **Asian** – a person having origins in any of the original peoples of the Far East, Southeast Asia, or the Indian subcontinent.
- **Black or African American** – a person having origins in any of the Black racial groups of Africa.
- **Native Hawaiian and Other Pacific Islander** – a person having origins in any of the original peoples of Hawaii, Guam, Samoa or other Pacific Islands.
- **Some other race** – includes all other responses not included in the list above. This also includes respondents reporting entries such as multiracial, mixed, interracial or a Hispanic/Latinx group.
- **Two or more races** – A combination of two or more of the race categories listed above.

- **Hispanic or Latinx** – a person of Mexican, Puerto Rican, Cuban, Central American, South American or other Spanish culture or origin, regardless of race. The term Latino or Latinx is defined here as people who speak Spanish or are descendants of people from Spanish-speaking countries or cultures. It excludes people from Portugal or Portuguese-speaking Brazil. Elsewhere, the term Latino or Latinx is more commonly defined geographically as people from Latin America including Central America, South America, and the Caribbean. It excludes people from Spain. Responses based on self-identification may span both definitions.

### **People with low incomes**

Individuals in households with incomes less than 200% of the federal poverty level as determined by the U.S. Department of Health and Human Services (HHS).

This group may also be referred to as low-income population. Note that this designation applies only to those people whose poverty status can be determined.

Poverty is defined in this profile as individuals in households with incomes below 100% of the federal poverty level.

### **People with a disability**

An individual with a disability is a person who has a physical or mental impairment that substantially limits one or more major life activities or has a record of such an impairment or is regarded as having such an impairment. Disability status is determined for the civilian noninstitutionalized population.

### **People with limited English proficiency**

Individuals who report speaking English less than “very well.” English proficiency is determined for individuals age 5 and above.

### **Children and youth**

Individual ages 0 to 17. This group is often broken apart for more detail into younger children (age 0 to 4) and older children or youth (age 5 to 17).

### **Older adults**

Individuals age 65 and above. This group is often broken apart for more detail by separating into individuals 65 to 84 and individuals 85 and above.



## 2 Regional Data Profile

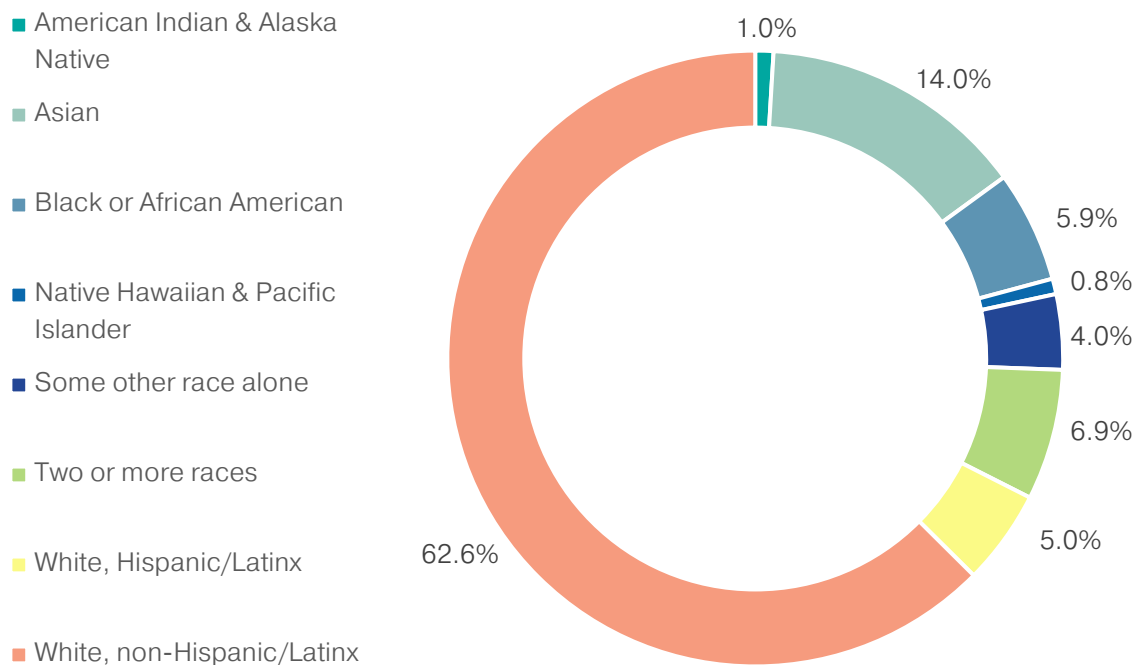
### 2.1 Race and Hispanic/Latinx Origin

The population of the central Puget Sound region was estimated at 4.25 million in 2019. Nearly four out of ten of the region's residents (37%) are people of color, while just over six out of ten residents (63%) are white non-Hispanic/Latinx.

Among people of color, Asians comprise the largest racial group at 14%. The Hispanic/Latinx population across all race categories is 10.2%. The Census Bureau defines Hispanic/Latinx as an ethnic origin rather than race classification, and as such, Hispanic/Latinx individuals can be of any race.

The region's multiracial and Black or African American populations are the next largest groups at 6.9% and 5.9% respectively. American Indian and Alaska Native (1%), Native Hawaiian and Other Pacific Islander (0.8%), and individuals identifying as Some Other Race (4%) round out the region's populations of color.

**Figure 1. Population by Race and Hispanic/Latinx Origin: 2019**



Note: The Hispanic/Latinx population share across all race categories is 10.2%

Source: American Community Survey, 2019 1-Year Estimates

Table 1. Population by Race and Hispanic/Latinx Origin: 2019

	Central Puget Sound		King County		Kitsap County		Pierce County		Snohomish County	
	Estimate	MoE	Estimate	MoE	Estimate	MoE	Estimate	MoE	Estimate	MoE
Total population	4,251,300	****	2,252,800	****	271,500	****	905,000	****	822,100	****
By race										
American Indian and Alaska Native alone	40,500	7,084	15,200	5,064	3,200	1,253	11,200	4,023	10,900	2,605
Asian alone	596,100	3,238	425,900	1,823	13,800	493	57,600	2,460	98,800	931
Black or African American alone	248,700	8,332	151,700	6,988	8,200	1,483	61,000	3,603	27,800	2,327
Native Hawaiian and Other Pacific Islander alone	34,500	12,084	16,000	9,198	2,600	2,066	12,500	4,882	3,400	5,773
White alone	2,871,300	4,057	1,398,900	2,297	218,400	777	649,300	2,309	604,800	2,290
Some other race alone	168,000	12,420	102,400	10,101	6,000	2,421	32,600	5,037	27,000	4,582
Two or more races	292,100	12,523	142,600	9,706	19,300	2,156	80,800	5,636	49,300	5,119
Not Hispanic or Latinx	3,816,100	****	2,030,100	****	249,100	****	802,000	****	734,900	****
American Indian and Alaska Native alone	33,000	6,629	13,300	1,990	2,800	660	8,400	1,617	8,500	1,474
Asian alone	592,300	3,233	424,600	7,085	13,400	1,477	56,400	3,309	97,900	2,343
Black or African American alone	241,500	8,296	147,800	4,678	7,500	1,062	58,900	3,792	27,300	2,561
Native Hawaiian and Other Pacific Islander alone	33,500	3,522	15,700	1,831	2,600	479	12,000	2,464	3,300	894
White alone	2,659,500	3,030	1,302,500	3,208	205,800	317	593,600	427	557,500	1,353
Some other race alone	10,800	3,704	6,600	3,281	300	279	1,800	1,036	2,200	1,342
Two or more races	245,500	11,225	119,600	8,804	16,700	1,784	70,900	5,238	38,300	4,228
Hispanic or Latinx	435,200	****	222,600	****	22,400	****	103,000	****	87,200	****
American Indian and Alaska Native alone	7,500	2,342	1,900	1,011	400	381	2,800	1,361	2,400	1,947
Asian alone	3,800	588	1,300	683	400	313	1,200	888	900	610
Black or African American alone	7,300	1,313	3,900	1,947	700	700	2,100	1,025	500	389
Native Hawaiian and Other Pacific Islander alone	1,000	11,898	300	283	100	102	500	451	100	228
White alone	211,800	2,610	96,400	9,031	12,500	2,049	55,700	4,949	47,200	5,595
Some other race alone	157,200	11,769	95,900	9,457	5,700	2,401	30,700	4,936	24,800	4,352
Two or more races	46,700	5,840	23,100	4,458	2,600	1,137	9,900	2,183	11,000	2,859

<b>People of color</b>	<b>1,591,800</b>	<b>3,522</b>	950,200	3,208	65,600	317	311,400	427	264,600	1,353
<b>Total (%)</b>										
American Indian and Alaska Native alone	<b>1.0%</b>	<b>0.2%</b>	0.7%	0.2%	1.2%	0.5%	1.2%	0.4%	1.3%	0.3%
Asian alone	<b>14.0%</b>	<b>0.1%</b>	18.9%	0.1%	5.1%	0.2%	6.4%	0.3%	12.0%	0.1%
Black or African American alone	<b>5.9%</b>	<b>0.2%</b>	6.7%	0.3%	3.0%	0.5%	6.7%	0.4%	3.4%	0.2%
Native Hawaiian and Other Pacific Islander alone	<b>0.8%</b>	<b>0.5%</b>	0.7%	0.7%	1.0%	1.5%	1.4%	1.0%	0.4%	1.1%
White alone	<b>67.5%</b>	<b>0.1%</b>	62.1%	0.1%	80.4%	0.3%	71.7%	0.3%	73.6%	0.3%
White alone, non-Hispanic/Latinx	<b>62.6%</b>	<b>****</b>	57.8%	****	75.8%	****	65.6%	****	67.8%	****
Some other race alone	<b>4.0%</b>	<b>0.1%</b>	4.5%	0.4%	2.2%	0.9%	3.6%	0.6%	3.3%	0.6%
Two or more races	<b>6.9%</b>	<b>0.3%</b>	6.3%	0.4%	7.1%	0.8%	8.9%	0.6%	6.0%	0.6%
Hispanic/Latinx	<b>10.2%</b>	<b>0.4%</b>	9.9%	0.6%	8.2%	1.3%	11.4%	0.8%	10.6%	1.0%
People of color	<b>37.4%</b>	<b>0.2%</b>	42.2%	0.4%	24.2%	0.4%	34.4%	0.4%	32.2%	0.4%

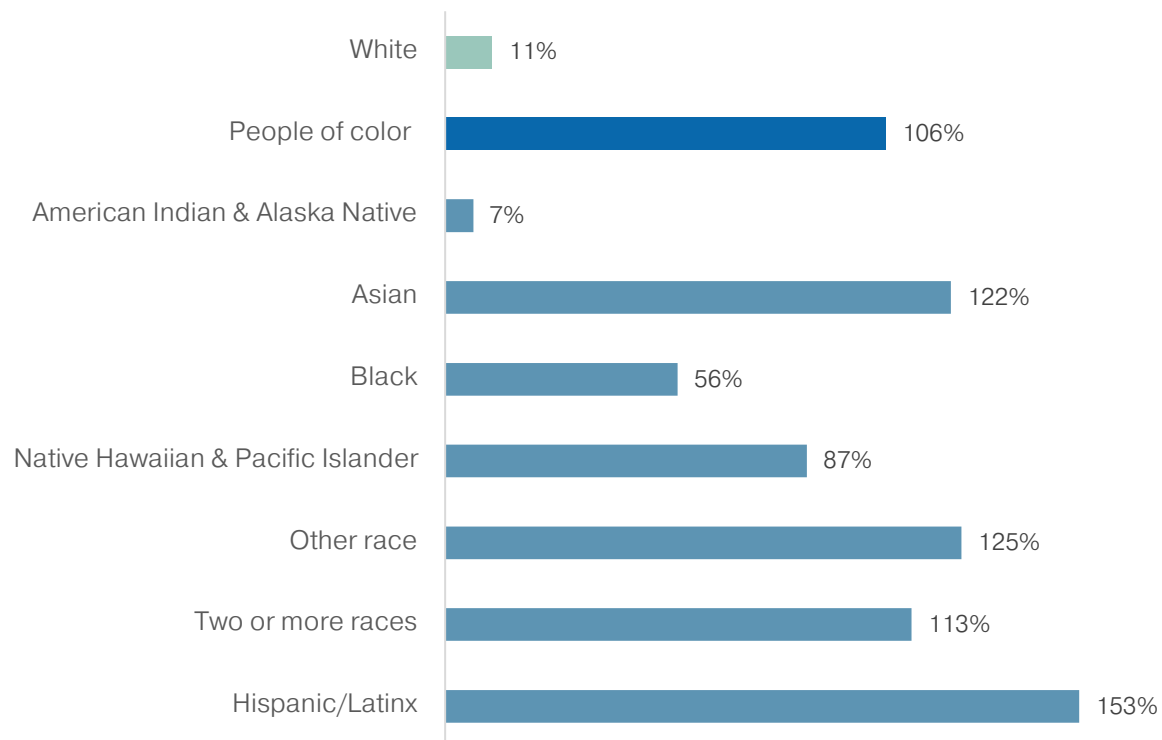
Source: American Community Survey, 2019 1-Year Estimates

Note: \*\*\*\*Estimate is controlled; a statistical test for sampling variability is not applicable.

The central Puget Sound has increasingly diversified over the last two decades, with people of color increasing from a 24% share of total population in 2000, to 31% in 2010, and 37% in 2019. Of the nearly 1 million people added to the region's population over the last two decades, more than 8 out of 10 net residents (84%) were people of color.

The fastest growing race/ethnic origin group since 2000 was the Hispanic/Latinx population, which increased by 153%. Over the same time period, Asians and people of two or more races more than doubled, by 122% and 113% respectively. Persons claiming some other race—a category frequently selected by individuals of Hispanic/Latinx origin—also more than doubled by 125%. The Native Hawaiian and Other Pacific Islander population increased by 87%, and Black or African American population by 56%.

**Figure 2. Population Change by Race and Hispanic/Latinx Origin: 2000-2019**

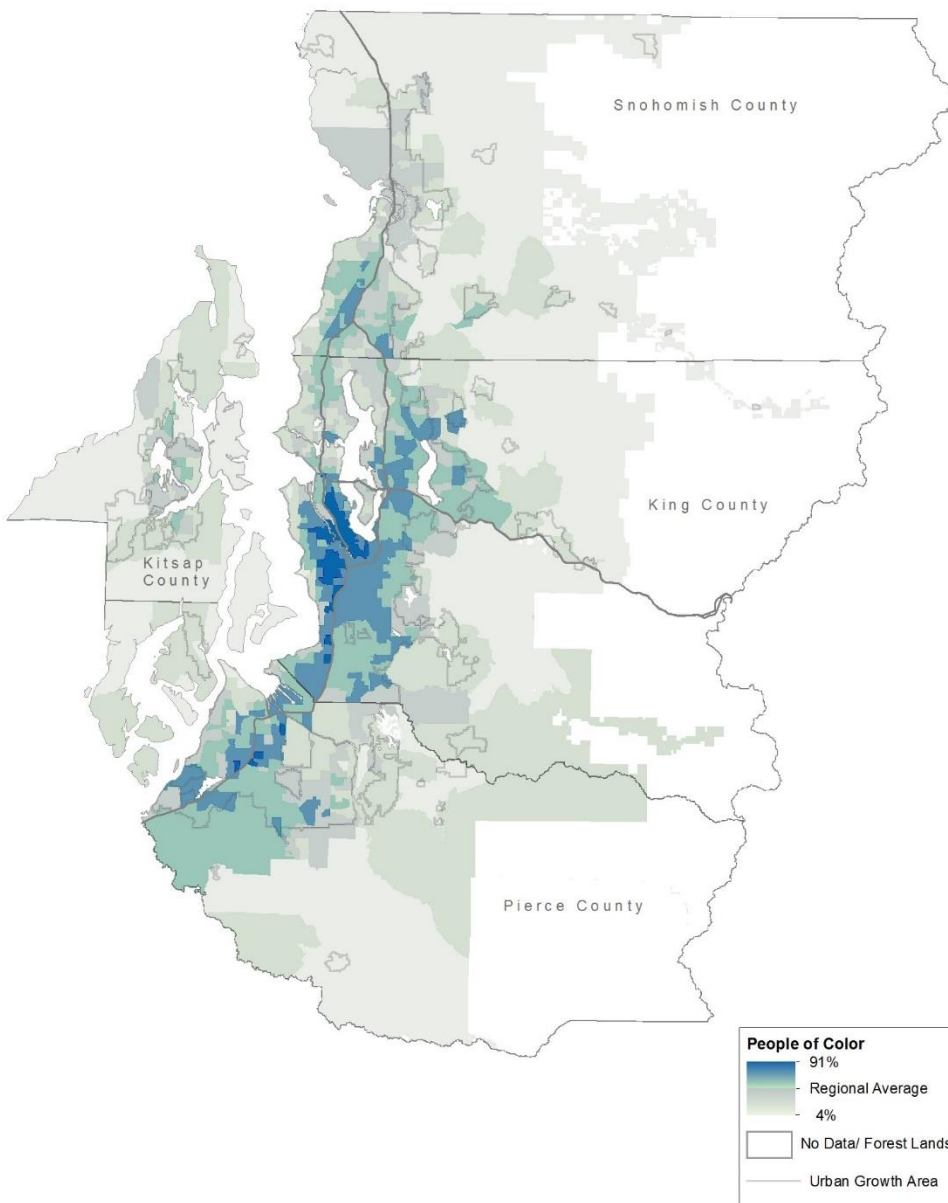


Source: American Community Survey, 2019 1-Year Estimates



Communities with high share of people of color are located in the more urban areas of the region, particularly along the Interstate 5 and Interstate 405 corridors. People of color have an especially strong presence in south Seattle, south King County, east King County, central/south Tacoma, central Pierce County, and southwest Snohomish County.

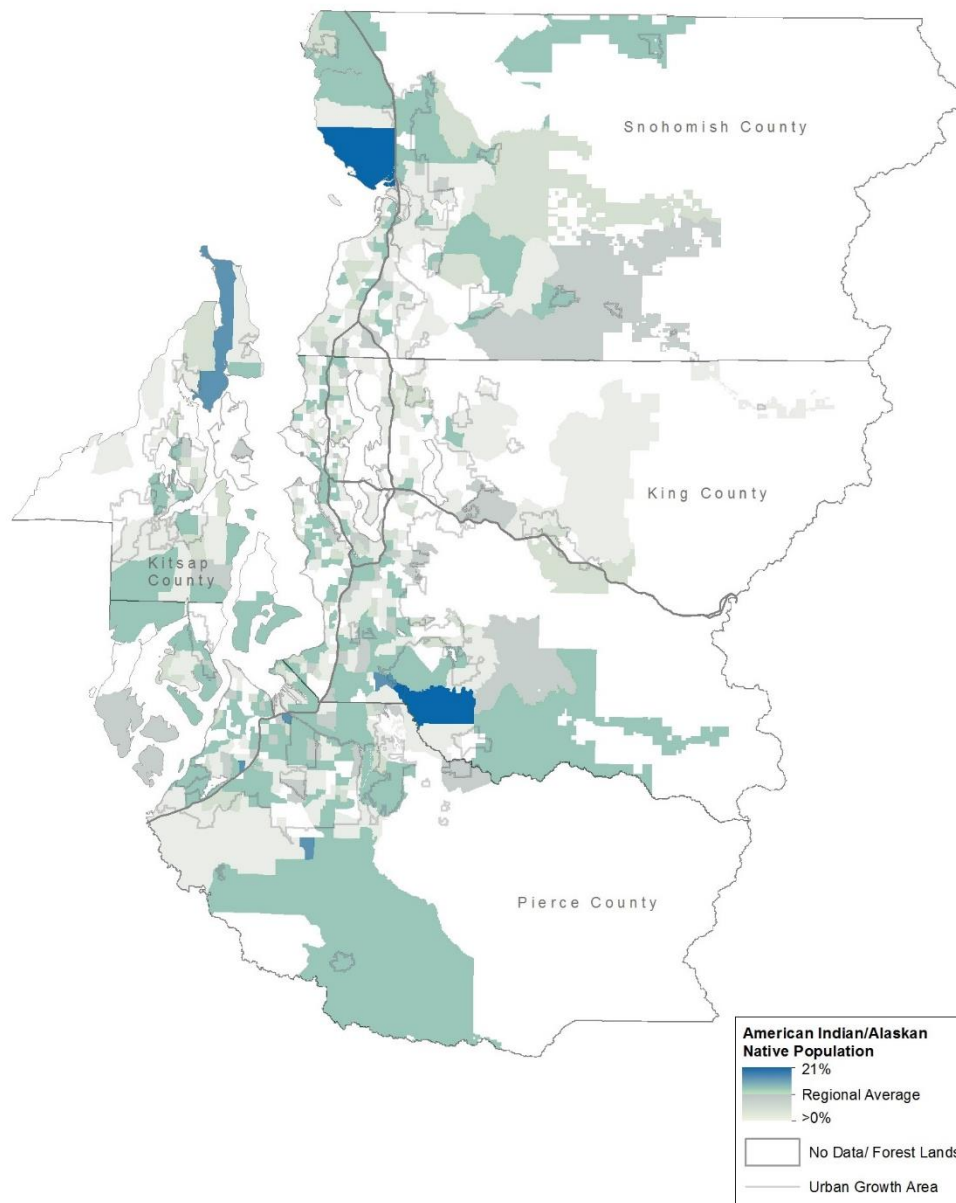
Figure 3. People of Color



Source: American Community Survey, 2015-2019 5-Year ACS Estimates

Each racial and ethnic origin group has uniquely different residential settlement patterns across the region, which is important for informing PSRC's outreach efforts and better understanding regional planning impacts upon local communities.

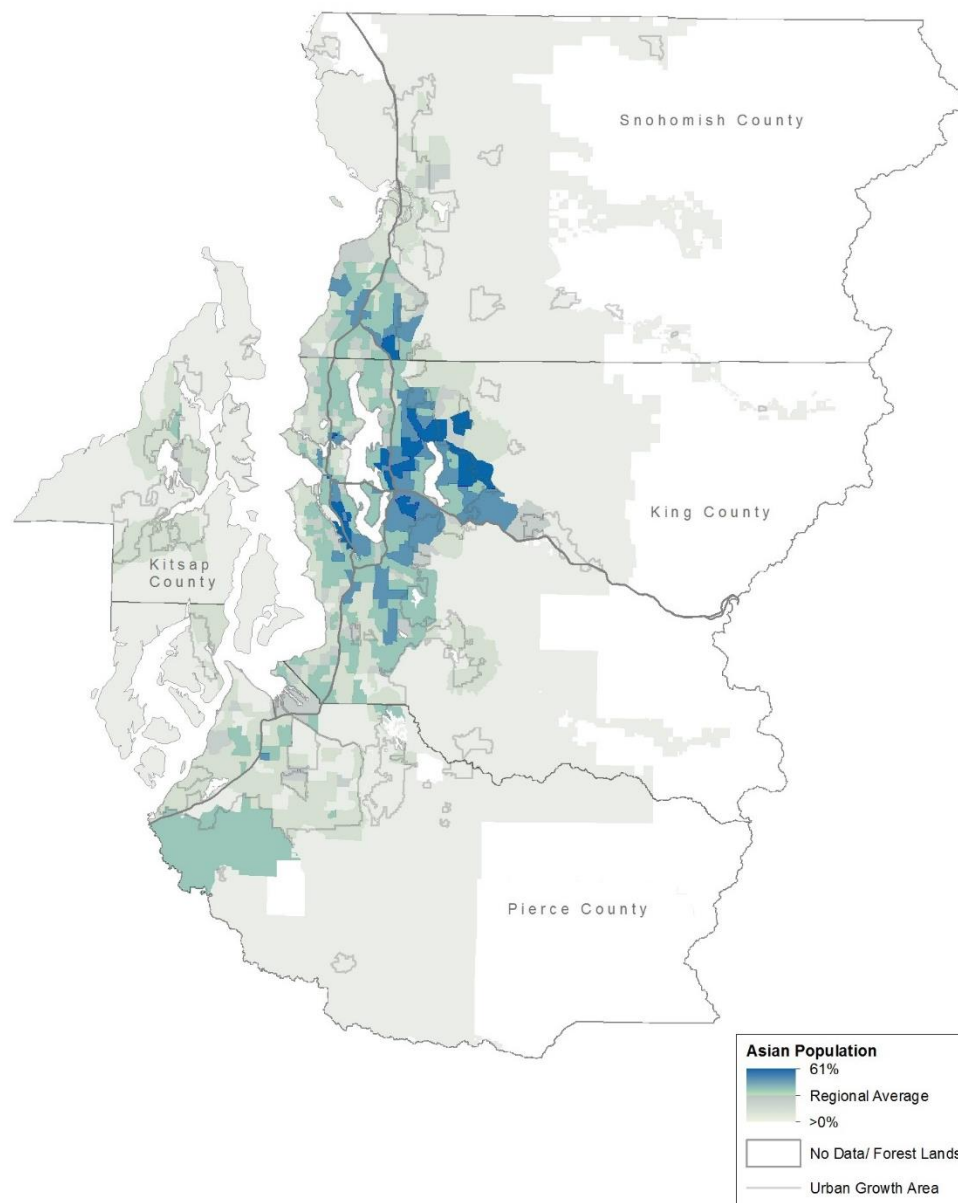
Figure 4. American Indian and Alaska Native Population



Source: American Community Survey, 2015-2019 5-Year ACS Estimates

American Indians and Alaska Natives comprise just 1% of the region's total population. Established communities are identifiable on and near various Tribal reservation lands in the central Puget Sound.

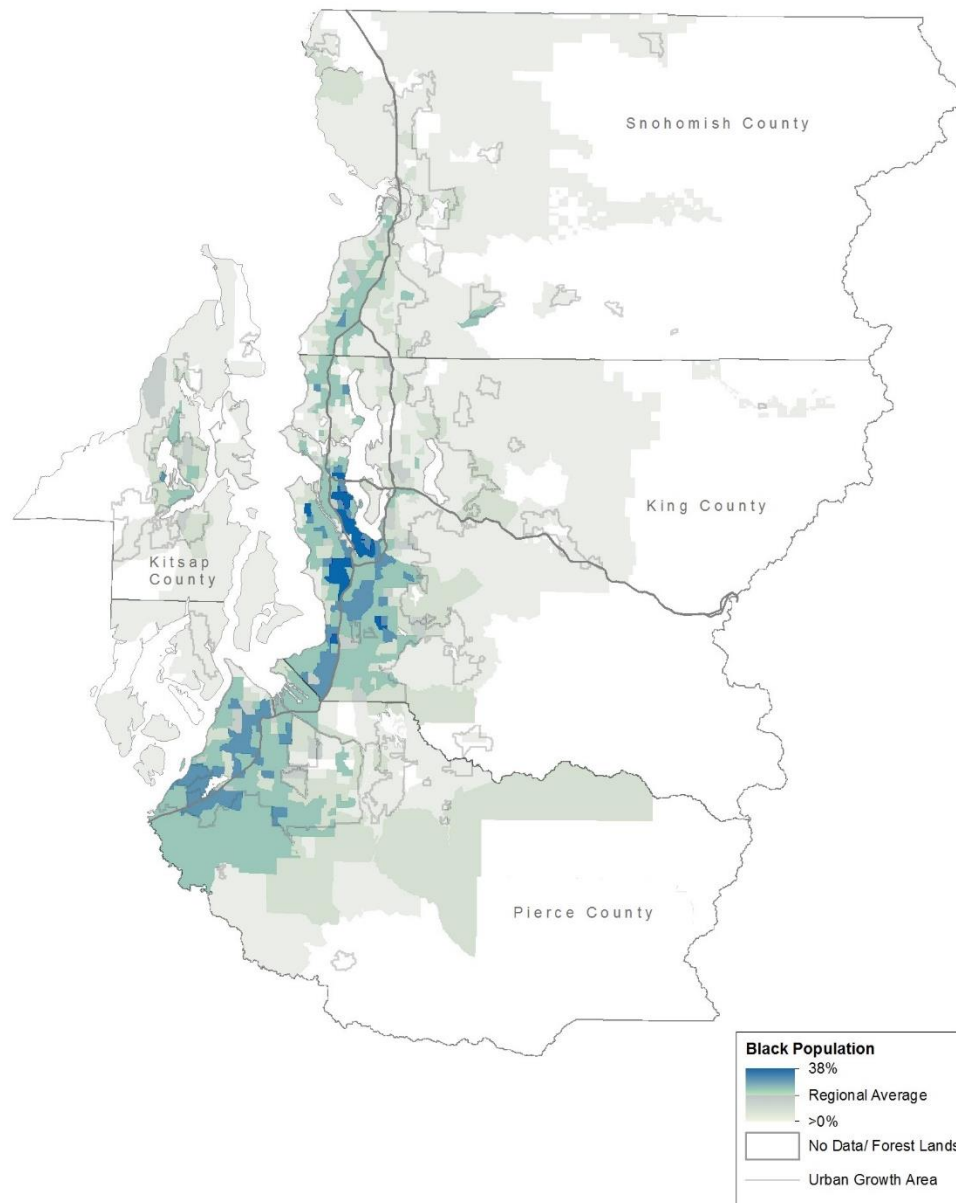
Figure 5. Asian Population



Source: American Community Survey, 2015-2019 5-Year ACS Estimates

The Asian population is relatively broadly dispersed throughout the region, with a particularly heavy presence southeast Seattle, east King County, south King County, and southwest Snohomish County.

Figure 6. Black or African American Population

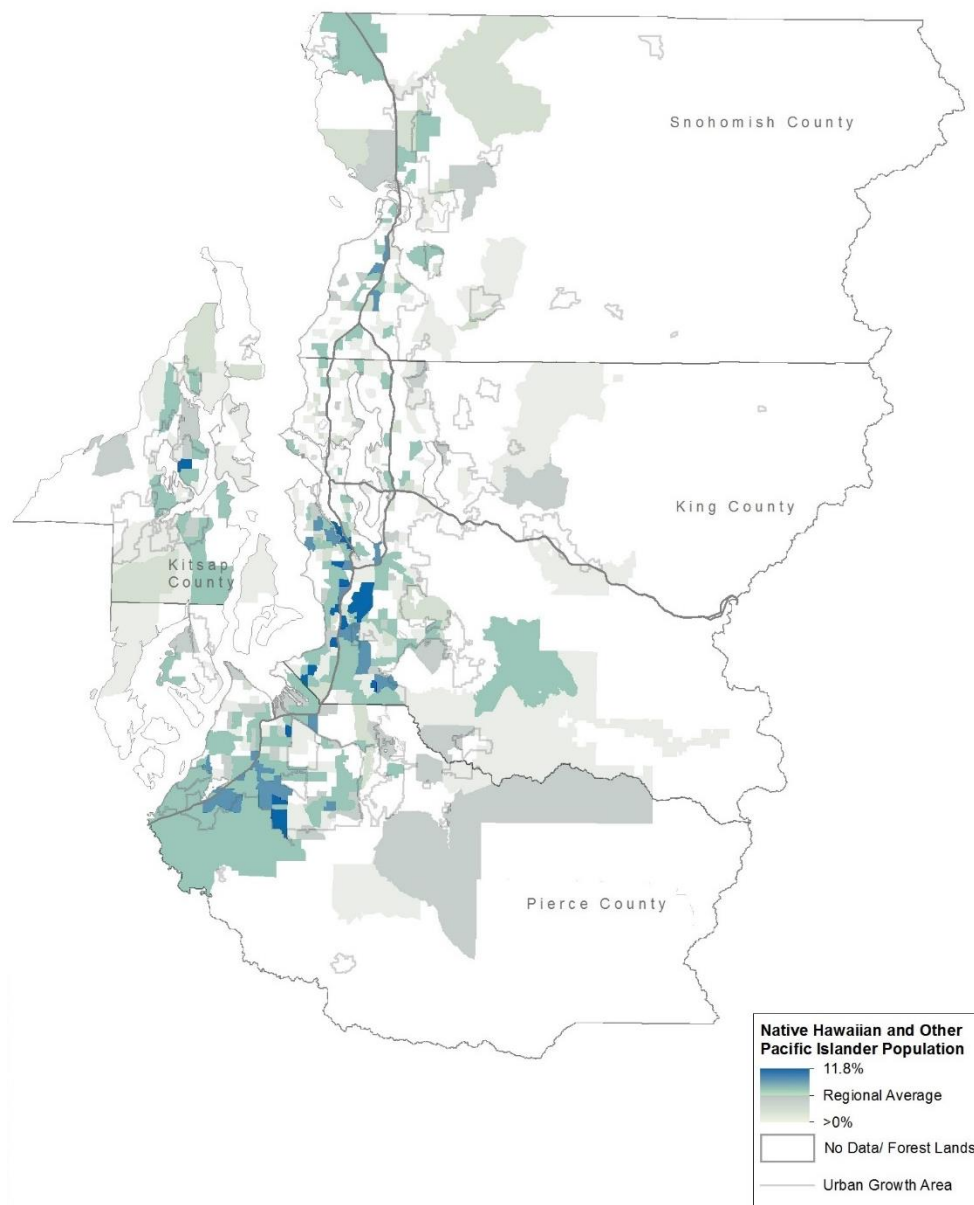


Source: American Community Survey, 2015-2019 5-Year ACS Estimates

The Black or African American population has a strong presence in south Seattle, south King County, central/south Tacoma, and central Pierce County.



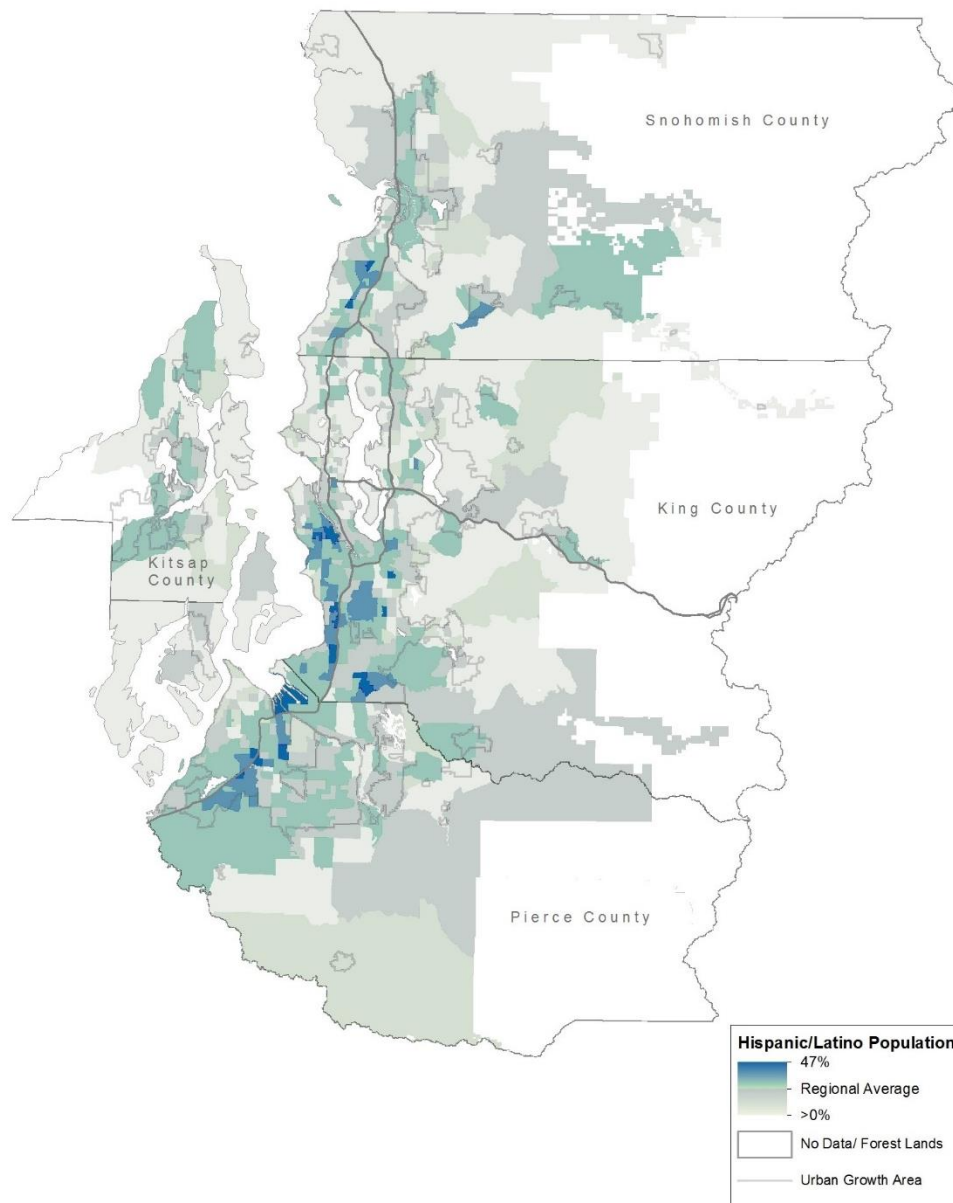
Figure 7. Native Hawaiian and Other Pacific Islander Population



Source: American Community Survey, 2015-2019 5-Year ACS Estimates

Native Hawaiians and Other Pacific Islanders are the region's smallest race group with a population of just 0.8% of the region's total population. Communities are present in southeast Seattle, south King County, Tacoma, and central Pierce County.

Figure 8. Hispanic/Latinx Population



Source: American Community Survey, 2015-2019 5-Year ACS Estimates

The Hispanic/Latino population, also broadly dispersed across the region, has a heavy presence in south Seattle, south King County, Tacoma, central Pierce County, and southwest Snohomish County.

## 2.3 Income

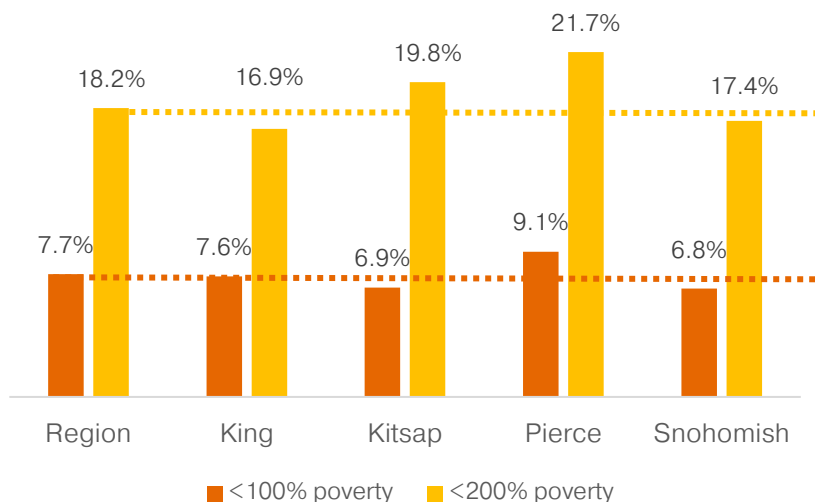
Due to the high cost of living in the central Puget Sound region, PSRC established the threshold for defining the low-income population as individuals in households with incomes below 200% of the federal poverty level. This profile also presents data for persons in households with income below 100% of the poverty level.

In 2019, nearly one-fifth (18.2%) of the region's population was low-income, and the share of people in households with incomes below 100% poverty was 7.7%. These rates are considerably lower than they were in 2010 coming out of the Great Recession, when the low-income population was at 25.4% and the poverty rate at 11.7%. In terms of absolute numbers, however, this translates to roughly 320,000 of the region's residents in poverty and a low-income population of over three-quarters of a million people (760,000).

The poverty rate in King County (7.6%) is similar to the regional average. Poverty rates in Kitsap (6.9%) and Snohomish (6.8%) counties are lower, while the rate is higher in Pierce County (9.1%).

County patterns are similar with some differences when considering all low-income residents. Low-income population shares in King (16.9%) and Snohomish (17.4%) counties are lower than for the region as a whole, while shares are higher in Kitsap (19.8%) and Pierce (21.7%) counties.

Figure 9. Low-Income Populations: 2019



Source: American Community Survey, 2019 1-Year Estimates

Table 2. Low-Income Populations: 2019

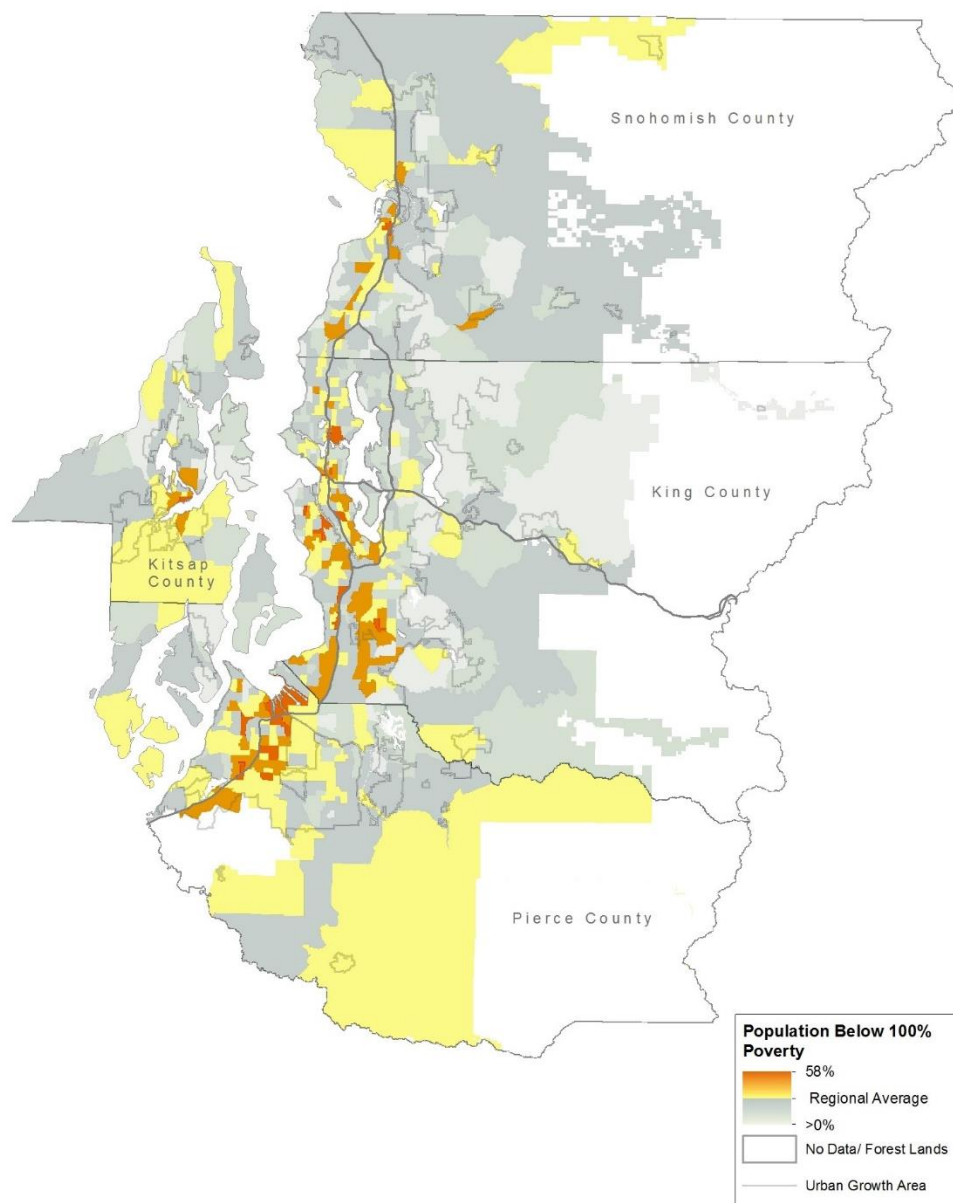
	Central Puget Sound		King County		Kitsap County		Pierce County		Snohomish County	
	Estimate	MoE	Estimate	MoE	Estimate	MoE	Estimate	MoE	Estimate	MoE
Population for whom poverty status is determined	4,180,300	5,594	2,221,100	3,444	262,500	2,038	886,800	2,741	809,900	2,787
Income below 100% of poverty level	323,200	16,915	168,600	12,866	18,100	3,538	81,100	8,353	55,300	6,190
	7.7%	0.4%	7.6%	0.6%	6.9%	1.3%	9.1%	0.9%	6.8%	0.8%
Income below 150% of poverty level	523,900	22,920	268,400	17,372	35,000	5,106	130,400	10,950	90,100	8,808
	12.5%	0.5%	12.1%	0.8%	13.4%	1.9%	14.7%	1.2%	11.1%	1.1%
Income below 200% of poverty level	760,700	28,258	375,100	20,352	52,000	6,026	192,600	14,529	140,900	11,701
	18.2%	0.7%	16.9%	0.9%	19.8%	2.3%	21.7%	1.6%	17.4%	1.4%

Source: American Community Survey, 2019 1-Year Estimates



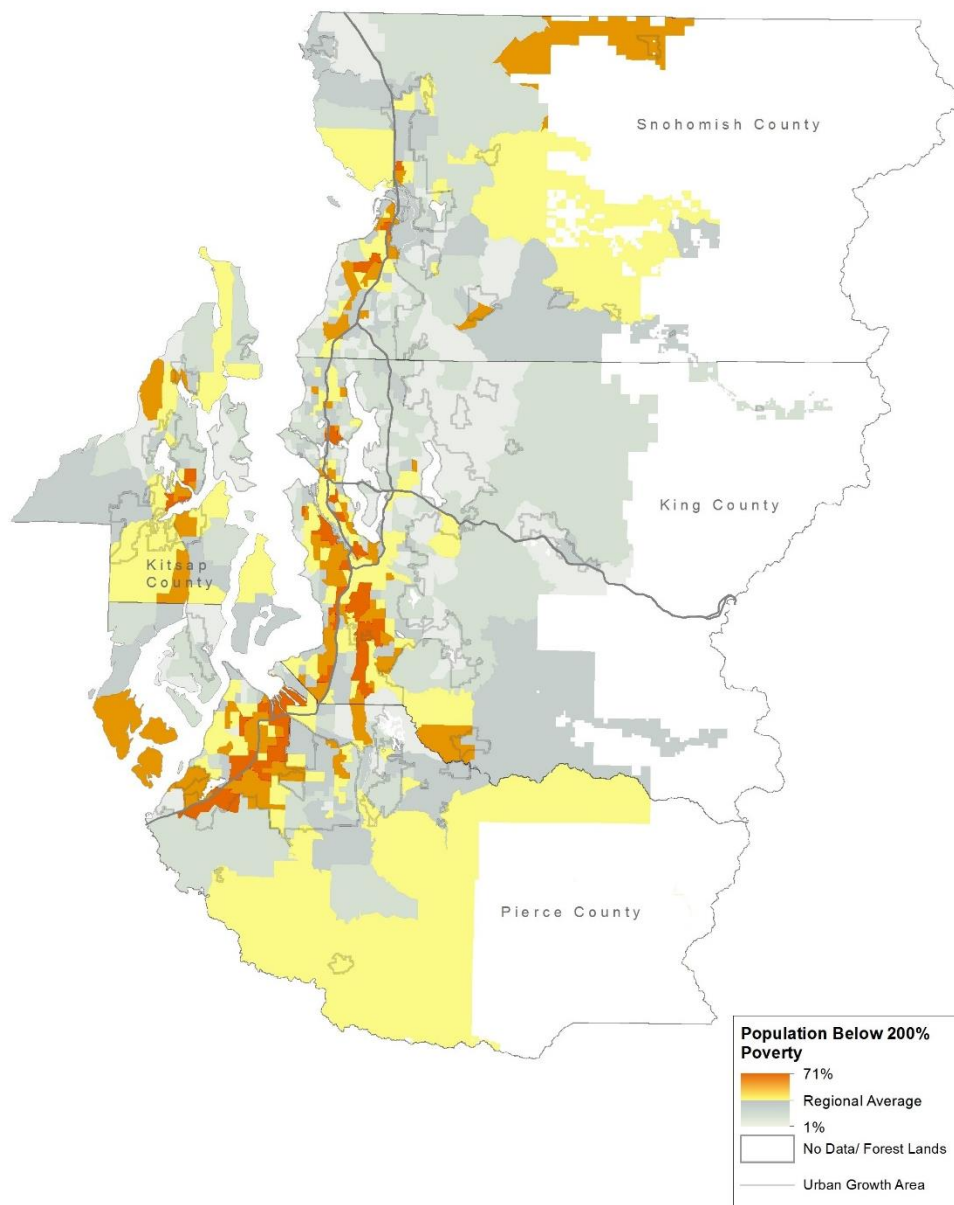
Communities with high levels of poverty and people with low incomes are located in distinct areas within the region's urban core, particularly along the Interstate 5 corridor in Snohomish County, south Seattle, south King County, central/south Tacoma, central Pierce County and central Kitsap County, as well as in some rural communities, particularly outside of King County.

Figure 10. Population Below 100% Poverty



Source: American Community Survey, 2015-2019 5-Year ACS Estimates

Figure 11. Low-Income Population

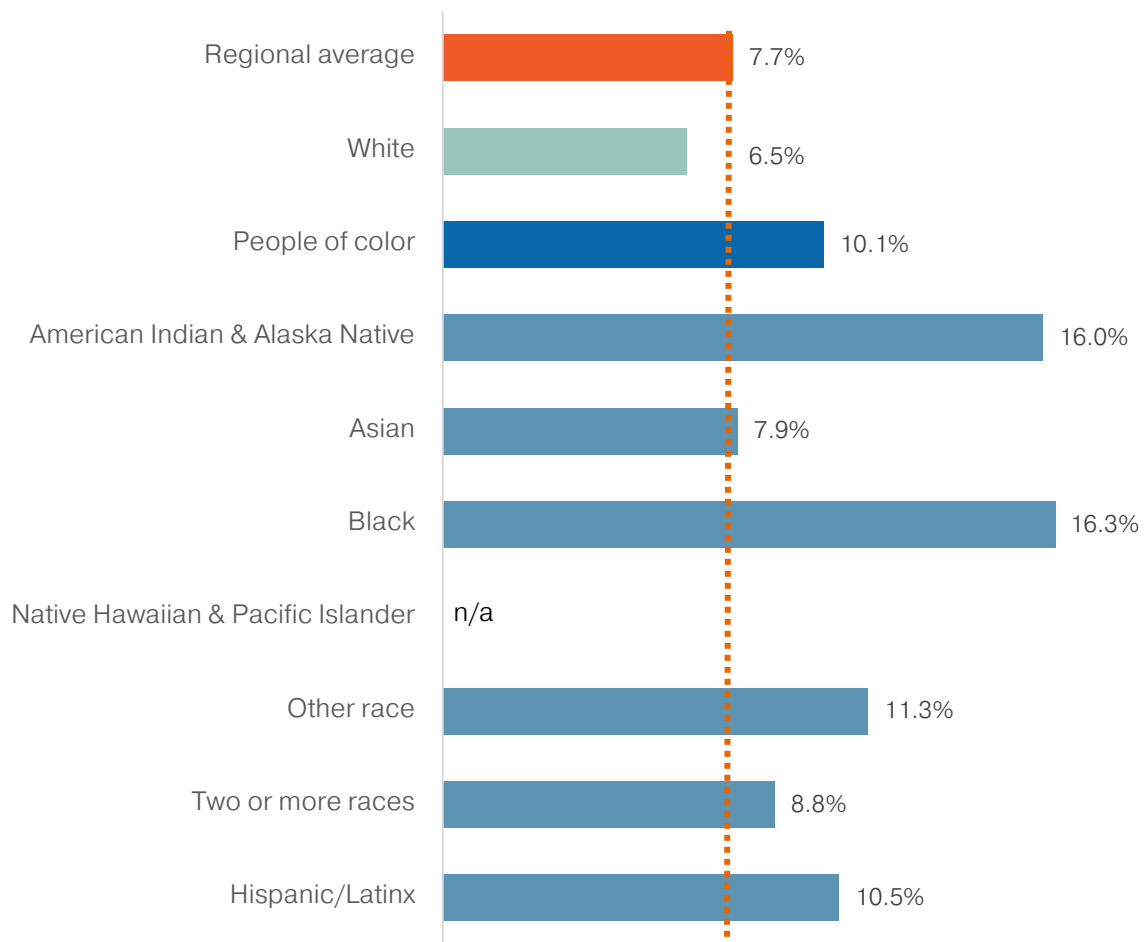


Source: American Community Survey, 2015-2019 5-Year ACS Estimates

Poverty rates vary significantly across race and ethnic origin groups. In 2019, whites were the only race group with a poverty rate (6.5%) below the regional average of 7.7%.

The poverty rate for all people of color was 10.1%, with the highest rates (at more than double the regional average) seen for Blacks or African Americans (16.3%) and American Indians and Alaska Natives (16.0%). The poverty rate for the Hispanic/Latinx population was 10.5%. Asians have the lowest poverty rate among people of color at 7.9%.

Figure 12. Poverty Rates by Race and Hispanic/Latinx Origin: 2019



Source: American Community Survey, 2019 1-Year Estimates

Table 3. Low Income Populations by Race and Hispanic/Latinx Origin: 2019

	Central Puget Sound		King County		Kitsap County		Pierce County		Snohomish County	
	Estimate	MoE	Estimate	MoE	Estimate	MoE	Estimate	MoE	Estimate	MoE
Population for whom poverty status is determined	4,180,300	5,594	2,221,100	3,444	262,500	2,038	886,800	2,741	809,900	2,787
Income below 100% of poverty level	7.7%	0.4%	7.6%	0.5%	6.9%	1.3%	9.1%	1.0%	6.8%	0.9%
American Indian and Alaska Native alone	*** 16.0%	5.6%	*** 18.6%	8.7%	*	*	*** 13.4%	8.0%	*** 7.6%	4.0%
Asian alone	7.9%	0.9%	8.0%	1.0%	*** 3.7%	2.8%	10.2%	2.2%	6.7%	2.2%
Black or African American alone	16.3%	3.0%	18.9%	4.5%	**	**	13.8%	4.4%	*** 10.4%	4.0%
Native Hawaiian and Other Pacific Islander alone	**	**	*	*	*	*	*** 14.1%	10.0%	*	*
White alone	6.5%	0.4%	5.9%	0.5%	6.3%	1.3%	8.0%	1.1%	6.5%	1.0%
Some other race alone	11.3%	3.3%	*** 9.9%	4.5%	*	*	*** 19.3%	7.6%	*** 8.5%	5.5%
Two or more races	8.8%	1.4%	9.1%	2.1%	*** 8.7%	3.3%	9.1%	2.8%	*** 7.5%	3.2%
Hispanic/Latinx	10.5%	1.8%	9.8%	2.4%	*** 8.4%	6.5%	14.0%	4.0%	*** 9.1%	4.3%
People of color	10.1%	1.3%	10.2%	1.4%	*** 8.2%	6.7%	12.1%	3.7%	*** 8.0%	3.3%
Income below 200% of poverty level	18.0%	0.6%	16.5%	0.8%	20.0%	2.2%	21.6%	1.7%	17.4%	1.4%
American Indian and Alaska Native alone	34.8%	7.7%	52.4%	12.1%	23.6%	7.4%	30.9%	8.7%	*** 17.9%	6.1%
Asian alone	14.8%	1.6%	14.7%	1.8%	20.9%	4.7%	23.2%	2.6%	9.9%	1.5%
Black or African American alone	33.8%	3.4%	37.5%	5.5%	*** 20.1%	12.1%	26.7%	2.7%	34.6%	8.0%
Native Hawaiian and Other Pacific Islander alone	*** 19.5%	6.5%	**	**	**	**	31.8%	6.8%	**	**
White alone	15.7%	0.6%	12.9%	0.7%	18.7%	2.3%	19.2%	1.0%	17.3%	0.7%
Some other race alone	30.4%	5.4%	27.1%	6.8%	**	**	40.1%	4.9%	27.7%	5.7%
Two or more races	23.8%	2.5%	24.9%	4.0%	21.7%	3.1%	26.0%	3.2%	18.0%	2.6%
Hispanic/Latinx	29.6%	3.1%	27.7%	4.2%	*** 30.7%	10.5%	32.6%	5.8%	30.7%	7.6%
People of color	23.5%	1.2%	22.6%	1.6%	24.9%	5.1%	28.3%	2.9%	20.9%	3.4%

Source: American Community Survey, 2019 1-Year Estimates and Public Use Microdata Sample

Notes: \*Estimate not available due to insufficient sample size. \*\*Estimate deemed statistically unreliable. \*\*\*Standard error greater than 20% of estimate; use estimate with caution.



Table 4. Median Household Income by Race and Hispanic/Latinx Origin: 2019

	Central Puget Sound		King County		Kitsap County		Pierce County		Snohomish County	
	Estimate	MoE	Estimate	MoE	Estimate	MoE	Estimate	MoE	Estimate	MoE
<b>Median household income in the past 12 months</b>										
All households	92,900	1,951	102,600	2,243	79,600	3,941	79,200	2,670	89,300	2,649
American Indian and Alaska Native alone	70,900	12,679	40,300	6,400	*** 60,500	37,738	*** 59,500	21,275	102,500	21,290
Asian alone	121,200	8,135	122,700	4,906	77,400	23,590	71,800	13,404	120,600	10,859
Black or African American alone	57,300	3,458	52,500	5,257	67,100	19,532	61,200	12,325	70,100	19,660
Native Hawaiian and Other Pacific Islander alone	81,400	20,276	*** 85,300	52,224	*** 90,200	49,993	81,700	11,941	*	*
White alone	95,000	1,977	107,500	2,589	81,200	3,964	83,100	2,480	88,700	3,183
Some other race alone	68,900	8,942	68,100	11,494	**	**	65,200	15,563	72,700	13,506
Two or more races	78,800	6,218	85,300	16,432	67,200	14,963	76,700	5,229	79,800	9,345
Hispanic/Latinx	75,800	4,740	78,200	7,656	*** 66,700	26,481	67,200	7,294	74,100	7,871
People of color	85,900	2,329	94,300	4,829	68,400	6,207	70,700	4,894	90,900	6,115
<b>Median household income as % of median household income for all households</b>										
All households	100%	0.0%	100%	0.0%	100%	0.0%	100%	0.0%	100%	0.0%
American Indian and Alaska Native alone	76%	13.7%	39%	6.2%	*** 76%	47.2%	*** 75%	26.7%	115%	23.6%
Asian alone	130%	8.8%	120%	4.0%	97%	29.2%	91%	16.6%	135%	11.5%
Black or African American alone	62%	3.6%	51%	5.0%	84%	24.2%	77%	15.3%	79%	21.9%
Native Hawaiian and Other Pacific Islander alone	88%	22.0%	*** 83%	50.9%	*** 113%	62.5%	103%	14.7%	*	*
White alone	102%	1.5%	105%	1.1%	102%	7.1%	105%	4.7%	99%	2.0%
Some other race alone	74%	9.8%	66%	11.1%	**	**	82%	19.4%	81%	14.9%
Two or more races	85%	6.8%	83%	15.9%	84%	18.3%	97%	5.7%	89%	10.1%
Hispanic/Latinx	82%	5.5%	76%	7.3%	*** 84%	33.0%	85%	8.7%	83%	8.5%
People of color	92%	2.4%	92%	4.1%	86%	8.7%	89%	5.5%	102%	6.7%

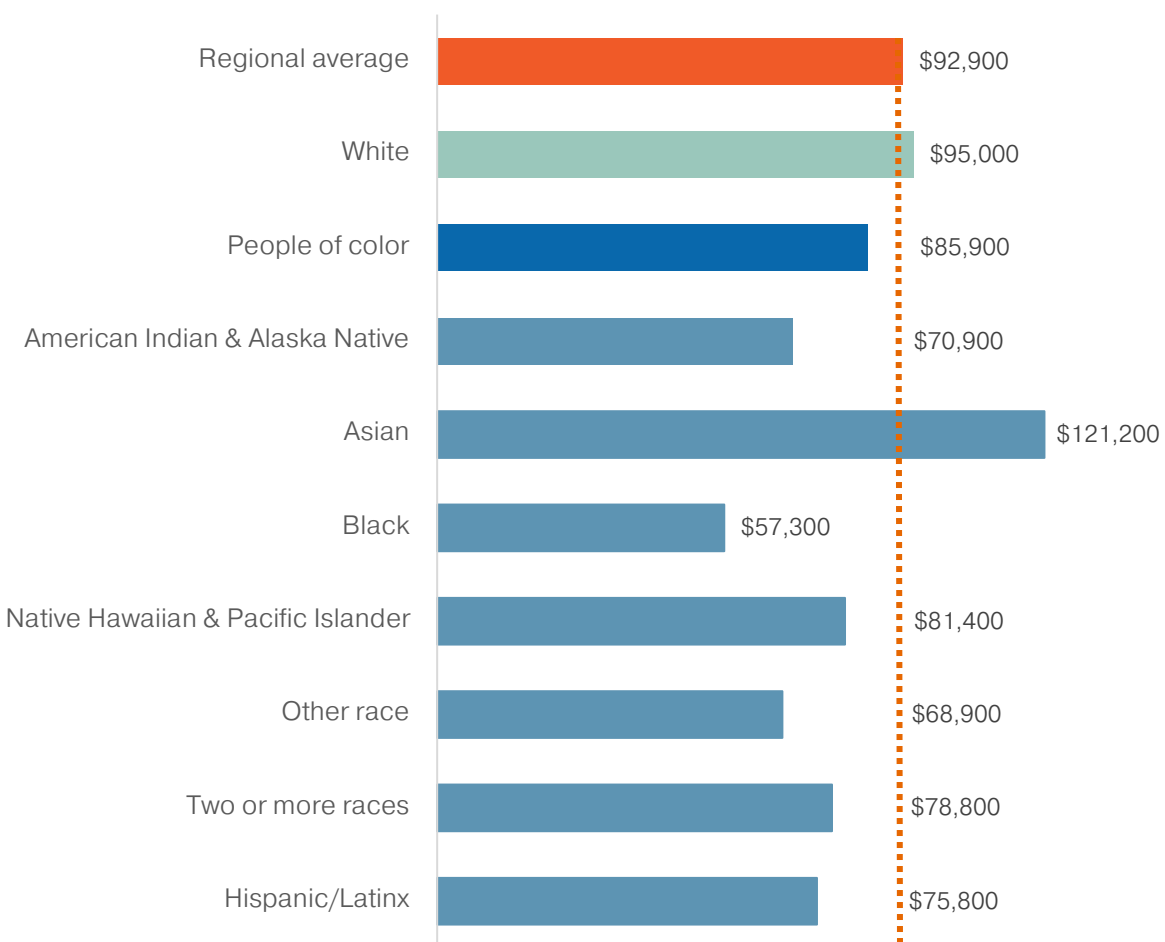
Source: American Community Survey, 2019 1-Year Estimates and Public Use Microdata Sample

Notes: Household classification by race and Hispanic/Latinx origin based on head of household. \*Estimate not available due to insufficient sample size. \*\* Estimate deemed statistically unreliable. \*\*\*Standard error greater than 20% of estimate; use estimate with caution.

The regional median household income in 2019 was \$92,900. As with poverty rates, there are significant differences in median incomes across racial and ethnic origin groups.

Asians have the highest median household income at \$121,200 (130% of the regional median), followed by whites at \$95,000. Median income is lowest for Blacks or African Americans at \$57,300 (62% of the regional median). Median income is \$70,900 (76% of the regional median) for American Indians and Alaska Natives, \$75,800 (82% of the regional median) for the Hispanic/Latinx population, and \$81,400 (88% of the regional median) for Native Hawaiians and Other Pacific Islanders.

**Figure 13. Median Household Income by Race and Hispanic/Latinx Origin: 2019**



Source: American Community Survey, 2019 1-Year Estimates and Public Use Microdata Sample

While Asians as a whole have a relatively low poverty rate and the highest median income across all racial and ethnic origin groups, there is considerable variation within this diverse race category depending on country of origin.

Based on American Community Survey 5-year data for the 2015-2019 period, poverty rates can average as high as 15.0% for Laotians, and as low as 4.8% for Filipinos and 4.0% for Asian Indians. Median household incomes range up to \$128,800 for Pakistanis and \$154,700 for Asian Indians, and on the low end between \$70,000 and \$80,000 for Vietnamese, Thai, Cambodians, and Koreans.

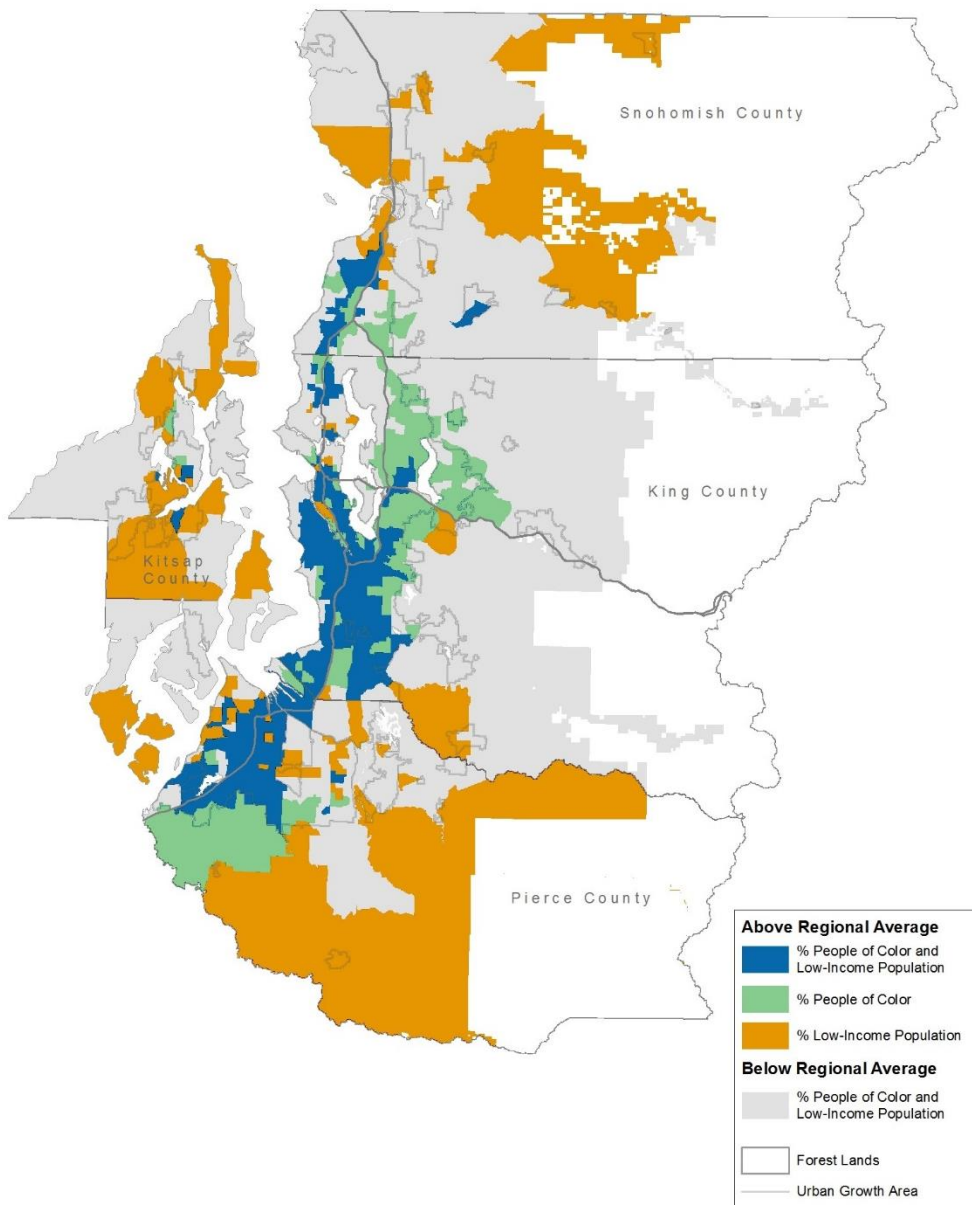
Table 5. Income Characteristics of Asian Alone Populations: 2015-2019

	Population		Income below 100% of poverty level		Median household income in the past 12 months	
	Estimate	MoE	Estimate	MoE	Estimate	MoE
Asian alone	541,000	2,998	9.0%	0.6%	103,200	2,815
Asian Indian	104,400	3,801	4.0%	0.9%	154,700	5,880
Cambodian	18,500	1,747	12.2%	3.6%	74,600	7,654
Chinese, except Taiwanese	120,700	3,485	12.4%	1.3%	110,200	6,607
Taiwanese	7,600	895	*** 11.4%	5.2%	107,300	24,128
Filipino	86,500	3,094	4.8%	0.7%	93,900	4,121
Japanese	30,500	1,451	7.7%	1.9%	93,800	7,511
Korean	54,300	2,418	11.4%	1.4%	74,300	7,577
Laotian	7,000	1,134	*** 15.0%	7.2%	*** 85,800	35,518
Pakistani	6,700	1,295	*** 10.9%	8.6%	128,800	21,726
Thai	5,700	751	*** 8.5%	3.9%	76,800	23,755
Vietnamese	63,700	2,735	11.8%	2.3%	77,200	4,598
Two or more Asian	19,300	1,426	8.8%	2.7%	99,200	13,231
Other Asian	16,100	1,564	14.7%	3.4%	74,100	15,988

Source: American Community Survey, 2015-2019 5-Year Estimates and Public Use Microdata Sample

Note: \*\*\*Standard error greater than 20% of estimate; use estimate with caution.

Figure 14. People of Color and Low-Income Populations



Source: American Community Survey, 2015-2019 5-Year ACS Estimates

Figure 14 illustrates the spatial distributions of census tracts with percent shares of people of color and low-income populations above the regional average. Low-income communities of color are heavily present along the Interstate 5 corridor in southwest Snohomish County, south Seattle, south King County, central/south Tacoma, and central Pierce County, as well as central Kitsap County.

## 2.4 Sex and Household Type

Regionally, there are significant differences in income characteristics based on sex and household type. The poverty rate for females overall (8.5%) is 1.5% higher than for males (7.0%). Likewise, nearly one in five females (19.6%) is low-income, compared to 16.4% for males.

This pattern holds consistently across the region's four counties and across most racial and ethnic origin populations as well. The difference in poverty rates between females and males is most pronounced for Black or African American and Hispanic/Latinx populations. The gender gap among people with low incomes is slightly higher for Blacks or African Americans and whites than the regional average.

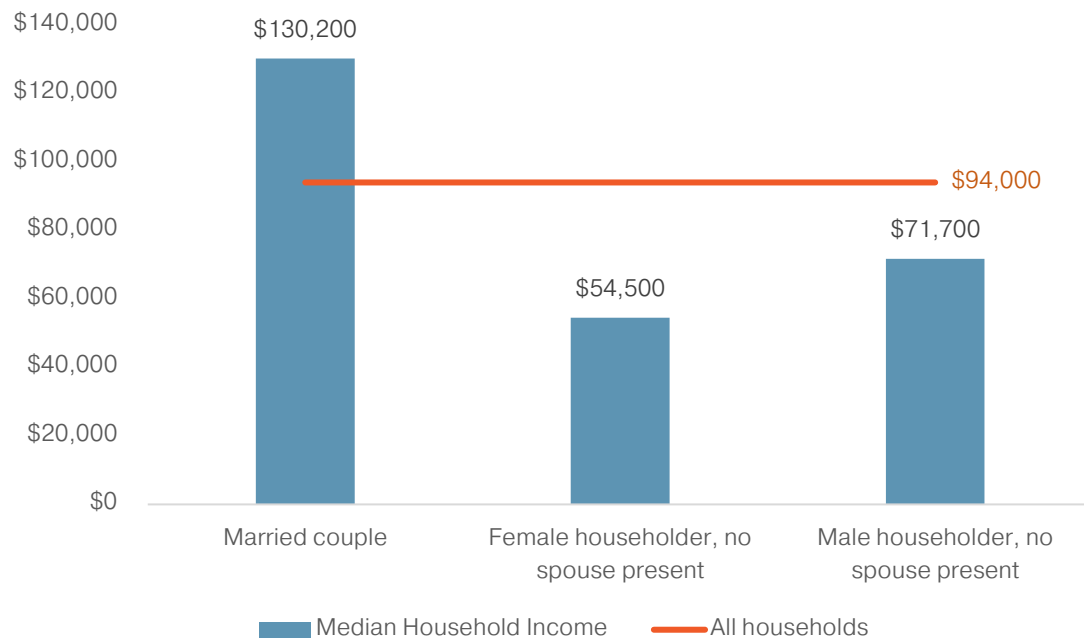
Estimates for American Indian and Alaska Native and Native Hawaiian and Other Pacific Islander populations should be used with caution, but the data (where available) indicate that female poverty rates and low-income population shares may be lower than males for these two racial groups.

About half of all households in the region are married couple families. Of families with a single householder, two-thirds are headed by female householders. The proportion of families with incomes under 100% of the poverty level are substantially higher for female householders with no spouse present (16.6%), compared to 7.9% for male householders with no spouse present and 2.2% for married couple families.

Similarly, median household income for the Seattle-Tacoma-Bellevue metropolitan statistical area (MSA) varies widely by household type. Median income for families with female householders and no spouse present is \$54,500—\$15,000 less than for male householders with no spouse present and less than half of median income for married couple families.



Figure 15. Median Household Income, Seattle-Tacoma-Bellevue MSA: 2019



Source: American Community Survey, 2019 1-Year Estimates

Table 6. Low Income Populations by Race and Hispanic/Latinx Origin and Sex: 2019

Income below 100% of poverty level			Income below 200% of poverty level		
	Estimate	MoE		Estimate	MoE
All persons for whom poverty status is determined	7.7%	0.4%	All persons for whom poverty status is determined	18.0%	0.6%
Female	8.5%	0.5%	Female	19.6%	0.8%
Male	7.0%	0.4%	Male	16.4%	0.7%
	***				
American Indian and Alaska Native alone	16.0%	5.6%	American Indian and Alaska Native alone	34.8%	7.7%
Female	12.1%	3.7%	Female	35.4%	8.4%
	***				
Male	20.3%	9.3%	Male	34.0%	9.6%
Asian alone	7.9%	0.9%	Asian alone	14.8%	1.6%
Female	8.0%	1.0%	Female	15.9%	1.8%
Male	7.7%	1.0%	Male	13.7%	1.6%
Black or African American alone	16.3%	3.0%	Black or African American alone	33.8%	3.4%
Female	19.0%	3.6%	Female	37.8%	4.8%
Male	13.9%	3.0%	Male	30.1%	4.0%
Native Hawaiian and Other Pacific Islander alone	**	**	Native Hawaiian and Other Pacific Islander alone	*** 19.5%	6.5%
Female	**	**	Female	*** 18.4%	7.3%
Male	**	**	Male	*** 21.1%	7.5%
White alone	6.5%	0.4%	White alone	15.7%	0.6%
Female	7.2%	0.5%	Female	17.4%	0.8%
Male	5.8%	0.5%	Male	14.1%	0.7%
Some other race alone	11.3%	3.3%	Some other race alone	30.4%	5.4%
Female	14.2%	4.3%	Female	32.8%	6.3%
Male	*** 8.9%	3.4%	Male	28.3%	5.7%
Two or more races	8.8%	1.4%	Two or more races	23.8%	2.5%
Female	9.7%	1.8%	Female	25.5%	2.8%

Male	8.0%	1.4%	Male	22.2%	3.0%
Hispanic/Latinx	10.5%	1.8%	Hispanic/Latinx	29.6%	3.1%
Female	12.3%	2.2%	Female	30.6%	3.3%
Male	8.9%	1.8%	Male	28.7%	3.5%
People of color	10.1%	1.3%	People of color	23.5%	1.2%
Female	11.1%	1.6%	Female	24.9%	1.4%
Male	9.2%	1.4%	Male	22.1%	1.3%

Source: American Community Survey, 2019 1-Year Estimates and Public Use Microdata Sample  
Notes: \*\*Estimate deemed statistically unreliable. \*\*\*Standard error greater than 20% of estimate; use estimate with caution.

Table 7. Income Characteristics of Households by Type: 2019

	Central Puget Sound		King County		Kitsap County		Pierce County		Snohomish County	
	Estimate	MoE	Estimate	MoE	Estimate	MoE	Estimate	MoE	Estimate	MoE
Total households	1,648,800	7,481	907,800	5,540	107,500	1,905	333,700	3,333	299,800	3,248
Family, married couple	809,100	11,974	430,000	9,230	57,700	2,537	162,300	5,597	159,200	4,521
Family, female householder, no spouse present	153,100	6,678	72,700	4,219	10,500	1,640	38,000	3,648	31,900	3,289
Family, male householder, no spouse present	76,200	4,985	34,600	3,376	5,400	1,227	20,200	2,505	15,900	2,383
Nonfamily, female householder	300,600	8,855	177,900	6,796	16,500	2,040	56,800	3,441	49,400	4,030
Nonfamily, male householder	309,800	8,380	192,600	6,174	17,400	2,017	56,400	4,082	43,500	3,375
Income below 100% of poverty level										
All households	7.7%	0.4%	7.8%	0.6%	7.4%	1.2%	8.5%	1.0%	7.0%	1.0%
Family, married couple	2.2%	0.3%	2.3%	0.5%	*** 2.9%	1.2%	2.8%	0.7%	1.2%	0.5%
Family, female householder, no spouse present	16.6%	2.1%	15.4%	2.9%	*** 16.0%	6.6%	18.0%	5.2%	18.1%	4.3%
Family, male householder, no spouse present	7.9%	2.3%	*** 8.3%	3.5%	**	**	*** 8.5%	4.7%	*** 6.5%	4.0%
Nonfamily, female householder	14.3%	1.2%	14.4%	1.5%	14.2%	4.5%	13.7%	2.7%	14.9%	3.7%
Nonfamily, male householder	11.4%	1.1%	11.0%	1.5%	*** 11.0%	4.7%	13.1%	2.5%	11.1%	2.6%
Median household income in the past 12 months										
All households	\$ 94,000	\$ 1,540	\$ 102,600	\$ 2,243	\$ 79,600	\$ 3,941	\$ 79,200	\$ 2,670	\$ 89,300	\$ 2,649
Family, married couple	\$ 130,200	\$ 1,698	\$ 148,800	\$ 3,229	\$ 102,200	\$ 5,505	\$ 105,600	\$ 1,538	\$ 120,200	\$ 3,138
Family, female householder, no spouse present	\$ 54,500	\$ 2,419	\$ 56,900	\$ 3,153	\$ 53,600	\$ 9,237	\$ 49,300	\$ 5,268	\$ 53,400	\$ 7,169
Family, male householder, no spouse present	\$ 71,700	\$ 2,700	\$ 72,000	\$ 6,362	\$ 78,000	\$ 13,913	\$ 70,700	\$ 7,695	\$ 72,900	\$ 15,205

Source: American Community Survey, 2019 1-Year Estimates

Notes: The Seattle-Tacoma-Bellevue metropolitan statistical area is comprised of King, Pierce, and Snohomish counties. \*\*Estimate deemed statistically unreliable. \*\*\*Standard error greater than 20% of estimate; use estimate with caution.

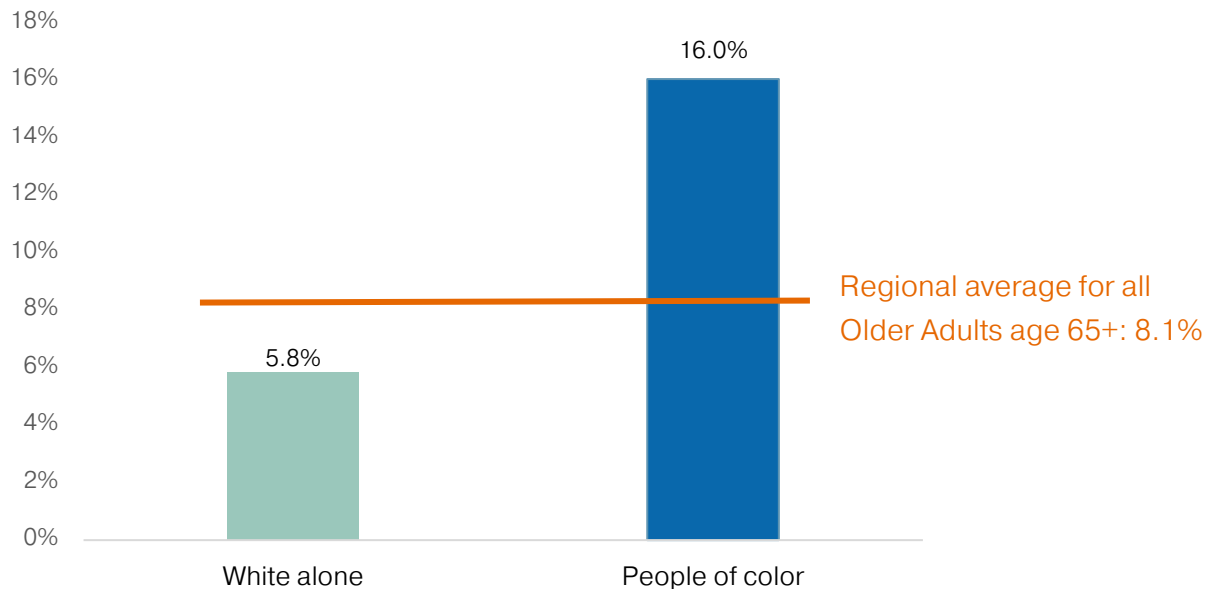
## 2.5 Age

The poverty rate for the region's older adults ages 65 and over (8.1%) is higher than the regional average for all persons (7.7%). The poverty rate for older adults age 85 and over (11.7%) is notably higher than for their younger counterparts age 65-84 (7.5%).

By county, poverty rates for older adults are highest in King County (9.4%), while they are lower in Pierce County (7.6%), Snohomish County (6.5%), and especially Kitsap County (4.7%).

The poverty rate for people of color age 65 and older (16%) is substantially greater than for the White population (5.8%), especially for Black or African American (18.9%) and Asian (18.6%) older adults.

**Figure 16. Poverty Rate for Older Adult Population Age 65 and Over: 2019**



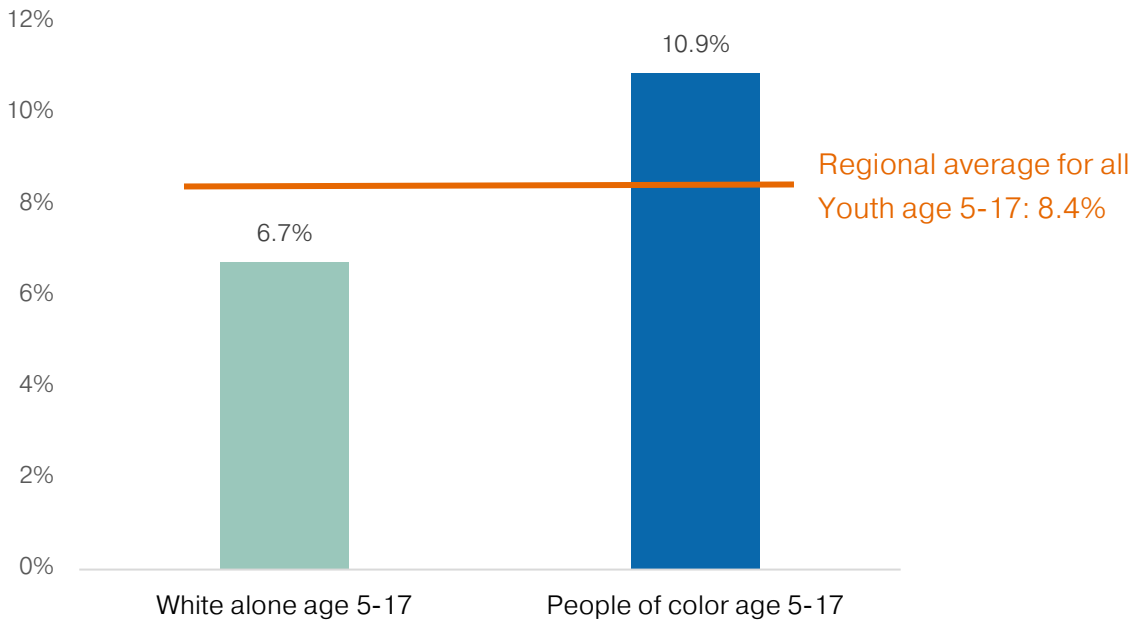
Source: American Community Survey, 2019 1-Year Estimates and Public Use Microdata Sample

The percentage of population under age 18 in poverty (8.5%) is also higher than for the general population (7.7%). The poverty rate for younger children age 0 to 4 (8.7%) is slightly higher than for youth age 5 to 17 (8.4%).

Pierce County has the highest proportion of youth in poverty (11%) compared to Snohomish County (8.2%), Kitsap County (7.6%), and King County (7.3%).

There are significant differences across racial and ethnic origin populations as well. The poverty rate among Black or African American youth (15.8%) and Hispanic/Latinx youth (12.8%) is substantially higher than for the youth population in general.

**Figure 17. Poverty Rate for Youth Population Age 5-17: 2019**



Source: American Community Survey, 2019 1-Year Public Use Microdata Sample



Table 8. Poverty Status for Population Age 65 and Over: 2019

	Central Puget Sound		King County		Kitsap County		Pierce County		Snohomish County	
	Estimate	MoE	Estimate	MoE	Estimate	MoE	Estimate	MoE	Estimate	MoE
Population for whom poverty status is determined	4,180,300	5,594	2,221,100	3,444	262,500	2,038	886,800	2,741	809,900	2,787
Income below 100% of poverty level	7.7%	0.4%	7.6%	0.6%	6.9%	1.3%	9.1%	0.9%	6.8%	0.8%
Age 65 and over	8.1%	0.6%	9.4%	1.0%	4.7%	1.4%	7.6%	1.1%	6.5%	1.3%
Age 65-84	7.5%	0.9%	8.6%	1.4%	*** 4.1%	1.6%	7.3%	1.6%	6.2%	1.7%
Age 85+	11.7%	2.8%	*** 13.1%	4.4%	**	**	*** 13.1%	4.6%	**	**
American Indian and Alaska Native alone	**	**								
Asian alone	18.6%	4.7%								
Black or African American alone	*** 18.9%	6.7%								
Native Hawaiian and Other Pacific Islander alone	**	**								
White alone	5.8%	0.6%								
Some other race alone	**	**								
Two or more races	**	**								
Hispanic/Latinx	**	**								
People of color	16.0%	2.9%								

Source: American Community Survey, 2019 1-Year Estimates and Public Use Microdata Sample

Notes: \*\*Estimate deemed statistically unreliable. \*\*\*Standard error greater than 20% of estimate; use estimate with caution.

Table 9. Poverty Status for Population Under Age 18: 2019

	Central Puget Sound		King County		Kitsap County		Pierce County		Snohomish County	
	Estimate	MoE	Estimate	MoE	Estimate	MoE	Estimate	MoE	Estimate	MoE
Population for whom poverty status is determined	4,180,300	5,594	2,221,100	3,444	262,500	2,038	886,800	2,741	809,900	2,787
Income below 100% of poverty level	7.7%	0.4%	7.6%	0.6%	6.9%	1.3%	9.1%	0.9%	6.8%	0.8%
Under Age 18	8.5%	0.8%	7.4%	1.1%	8.2%	2.6%	11.6%	2.0%	7.8%	1.7%
Age 0-4	8.7%	1.6%	6.4%	1.6%	*** 13.1%	6.6%	*** 12.8%	4.3%	*** 8.2%	3.3%
Age 5-17	8.4%	1.2%	7.3%	1.2%	*** 7.6%	3.9%	11.0%	3.1%	8.2%	2.6%
American Indian and Alaska Native alone	**	**								
Asian alone	7.7%	2.4%								
Black or African American alone	*** 15.8%	5.9%								
Native Hawaiian and Other Pacific Islander alone	**	**								
White alone	6.7%	1.3%								
Some other race alone	*** 16.1%	6.4%								
Two or more races	8.2%	2.6%								
Hispanic/Latinx	12.8%	3.9%								
People of color	10.9%	1.8%								

Source: American Community Survey, 2019 1-Year Estimates and Public Use Microdata Sample

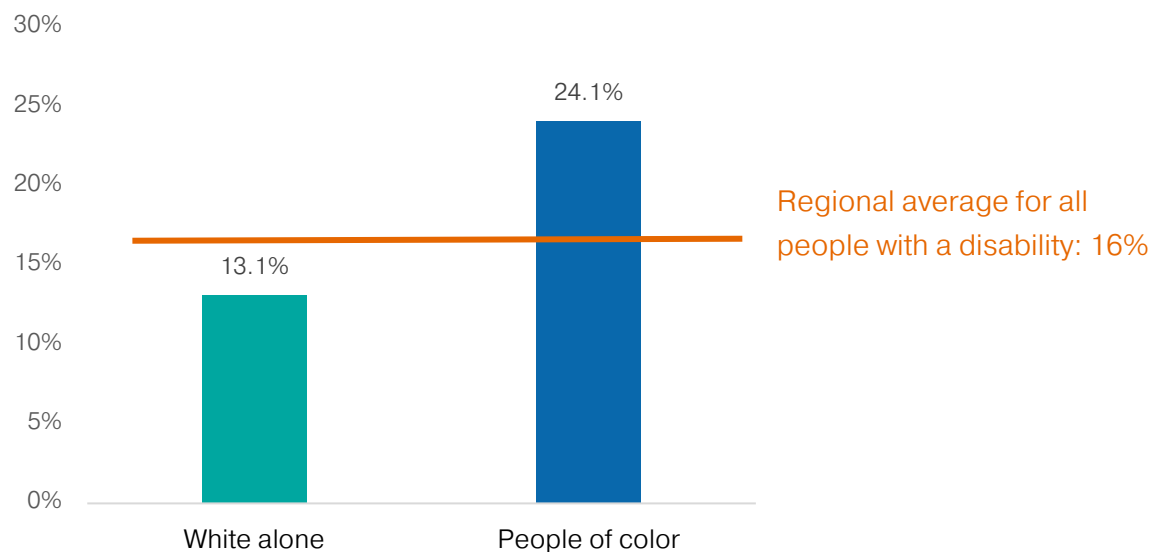
Notes: \*\*Estimate deemed statistically unreliable. \*\*\*Standard error greater than 20% of estimate; use estimate with caution.

## 2.6 Ability

The poverty rate for persons with one or more disabilities (16%) is double the regional average for all persons (7.8%). The poverty rate for older adults age 65 and over with a disability is lower (12%), but is substantially higher for youth age 5-17 with a disability (20.7%). These estimates do not include people in the Armed Forces or people living in institutional settings such as nursing homes and correctional facilities.

Poverty rates for people of color with disabilities are also extraordinarily high (24%), especially for Blacks or African Americans (33.6%) and Asians (25.7%), compared to their white counterparts (13%).

Figure 18. Poverty Rate for Persons with a Disability: 2019



Source: American Community Survey, 2019 1-Year Public Use Microdata Sample

Table 10. Poverty Status for Persons with a Disability: 2019

	Central Puget Sound		King County		Kitsap County		Pierce County		Snohomish County	
	Estimate	MoE	Estimate	MoE	Estimate	MoE	Estimate	MoE	Estimate	MoE
Population for whom poverty status is determined	4,153,600	6,148	2,219,600	3,458	251,600	2,710	874,200	3,169	808,300	2,908
Income below 100% of poverty level	7.8%	0.3%	7.6%	0.5%	7.2%	1.1%	9.2%	0.8%	6.8%	0.7%
With one or more disabilities	16.0%	1.2%	18.1%	2.0%	12.3%	3.6%	13.7%	1.8%	15.2%	2.4%
Age 5-17	20.7%	5.6%								
Age 65+	12.0%	2.1%								
American Indian and Alaska Native alone	**	**								
Asian alone	25.8%	7.6%								
Black or African American alone	33.6%	8.7%								
Native Hawaiian and Other Pacific Islander alone	**	**								
White alone	13.1%	1.6%								
Some other race alone	**	**								
Two or more races	21.9%	5.2%								
Hispanic/Latinx	17.6%	5.7%								
People of color	24.1%	3.6%								

Source: American Community Survey, 2019 1-Year Estimates and Public Use Microdata Sample

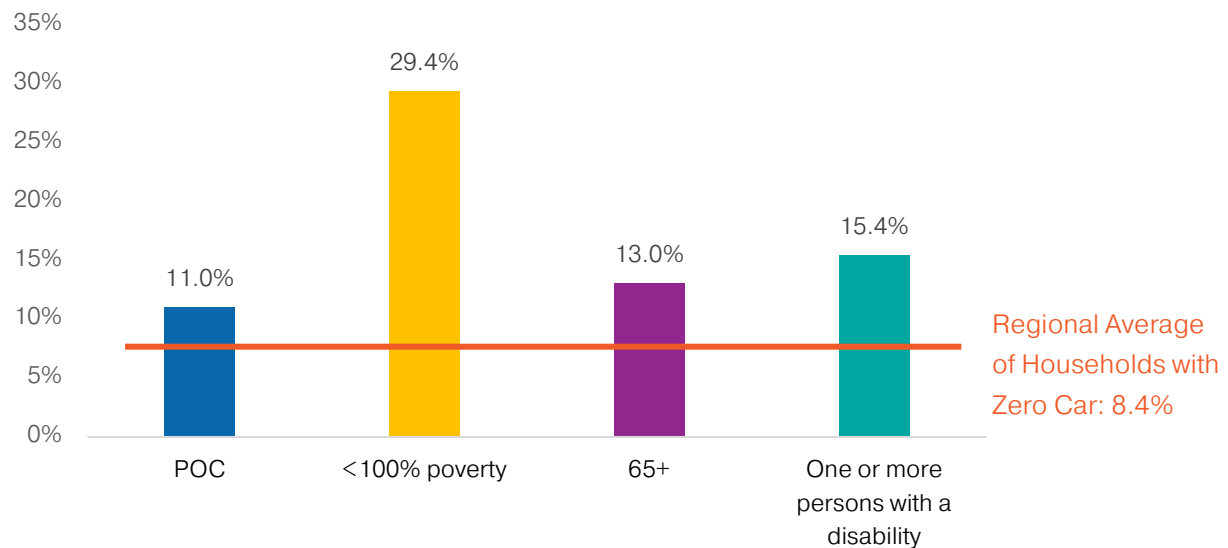
Note: \*\*Estimate deemed statistically unreliable.

## 2.7 Zero-Vehicle Households

Information on households in the region with no personal vehicles is important for informing regional transit and mobility planning, program activities and public outreach.

On average, 8.4% of households in the region do not own a personal vehicle. Households with a people of color householder, income below 100% of the poverty level, older adult householder, and one or more persons with a disability are far less likely to have a vehicle available than the average household in the region.

**Figure 19. Zero-Vehicle Households by Householder: 2019**



Source: American Community Survey, 2019 1-Year Estimates and Public Use Microdata Sample

King County has a significantly higher share of households with no vehicles (11.5%) compared to Kitsap (4.3%), Pierce (4.6%), and Snohomish (4.8%) counties.

Table 11. Zero-Vehicle Households: 2019

	Central Puget Sound		King County		Kitsap County		Pierce County		Snohomish County	
	Estimate	MoE	Estimate	MoE	Estimate	MoE	Estimate	MoE	Estimate	MoE
Total households	1,648,800	7,481	907,800	5,540	107,500	1,905	333,700	3,333	299,800	3,248
Households with no vehicle available	138,700	7,128	104,200	6,321	4,610	1,251	15,400	2,252	14,500	2,056
% Zero-vehicle households	8.4%	0.4%	11.5%	0.7%	4.3%	1.2%	4.6%	0.7%	4.8%	0.7%
People of Color householder	55,600	5,845	46,200	5,231	**	**	4,650	1,240	4,050	1,242
% Zero-vehicle households	11.0%	1.1%	14.5%	1.5%	**	**	5.1%	1.3%	5.3%	1.6%
Income below 100% poverty	37,300	4,350	25,700	3,924	**	**	4,700	1,112	*** 5,120	1,933
% Zero-vehicle households	29.4%	3.0%	36.7%	4.5%	**	**	17.7%	4.6%	23.6%	7.7%
Householder age 65+	46,600	3,765	29,600	3,154	*** 2,530	907	7,080	1,331	7,400	1,279
% Zero-vehicle households	13.0%	1.0%	16.3%	1.7%	*** 8.6%	3.0%	8.9%	1.6%	11.0%	1.8%
One or more persons with a disability	55,800	5,222	35,600	4,602	*** 2,820	983	8,570	1,546	8,810	2,117
% Zero-vehicle households	15.4%	1.3%	20.9%	2.5%	*** 9.7%	3.3%	9.7%	1.7%	11.6%	2.7%

Source: American Community Survey, 2019 1-Year Estimates and Public Use Microdata Sample

Notes: \*\*Estimate deemed statistically unreliable. \*\*\*Standard error greater than 20% of estimate; use estimate with caution.

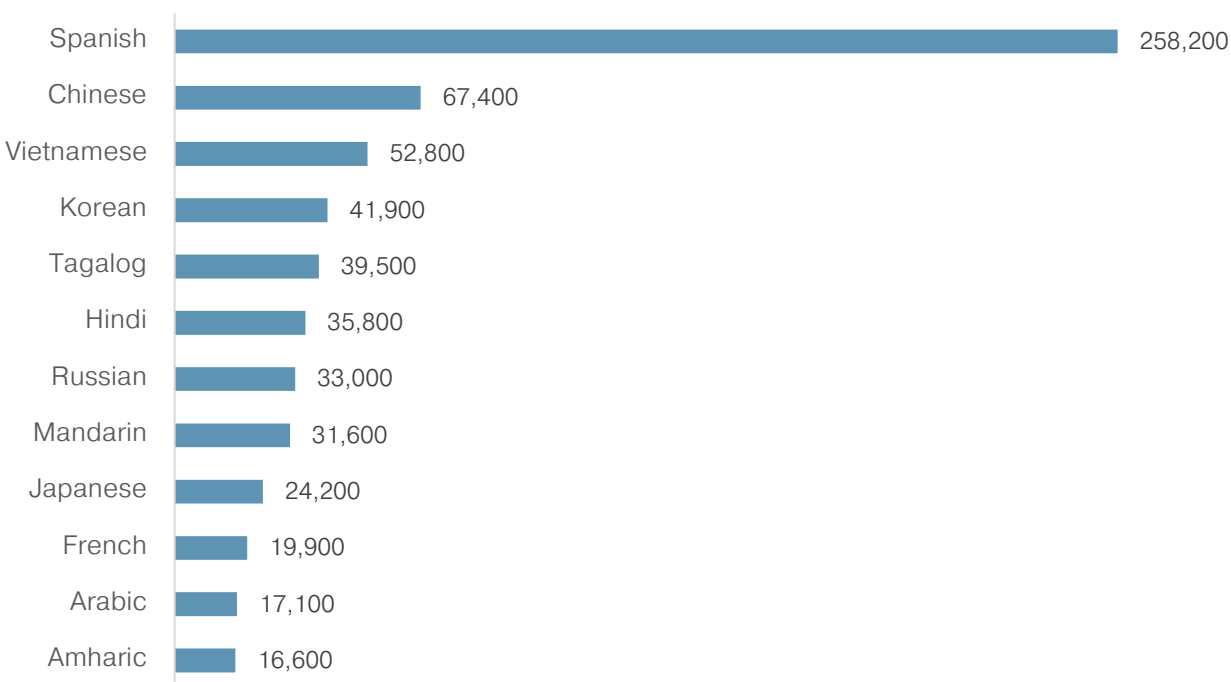


## 2.8 Language and Limited English Speaking Populations

Spanish is the most common language spoken in region other than English, far outnumbering the number of speakers of other languages. Other commonly spoken languages vary by county, with Chinese, Vietnamese, Korean, Tagalog, and Hindi frequently being in the top of the rankings.

In the American Community Survey, “Language spoken at home” is a write-in response. Some respondents answer with Chinese rather than a specific dialect. The category Chinese includes several dialects, the most commonly spoken in the region being Mandarin.

**Figure 20. Common Languages Spoken Other Than English: 2019**



Source: American Community Survey, 2019 1-Year Public Use Microdata Sample

Table 12. Common Languages Other Than English Spoken in the Central Puget Sound: 2019

Rank	Central Puget Sound				King County				Kitsap County			
	Language	Estimate	MoE		Language	Estimate	MoE		Language	Estimate	MoE	
1	Spanish	258,200	12,761		Spanish	151,600	8,241		Spanish	4,940	1,610	
2	Chinese	67,400	7,735		Chinese	56,600	7,298		Tagalog	2,960	1,082	***
3	Vietnamese	52,800	8,364		Vietnamese	38,600	7,262		Japanese	1,410	714	**
4	Korean	41,900	5,704		Hindi	30,200	5,524		Other Central and South American Languages	1,000	1,342	**
5	Tagalog	39,500	5,785		Mandarin	27,700	4,806		German	860	624	**
6	Hindi	35,800	5,757		Korean	21,000	4,047		Filipino	760	653	**
7	Russian	33,000	7,287		Tagalog	19,200	4,193		French	740	640	**
8	Mandarin	31,600	5,051		Russian	18,200	4,358		Dutch	520	760	**
9	Japanese	24,200	4,485		Japanese	15,100	3,695		Punjabi	460	539	**
10	French	19,900	4,632		French	14,100	4,102		Korean	430	346	**
11	Arabic	17,100	5,966	***	Cantonese	13,700	4,334		Chinese	390	379	**
12	Amharic	16,600	5,521	***	Telugu	12,900	4,641	***	Chamorro	350	339	**
Rank	Pierce County				Snohomish County							
	Language	Estimate	MoE		Language	Estimate	MoE					
1	Spanish	49,000	5,346		Spanish	52,700	5,729					
2	Korean	11,100	2,854		Tagalog	12,900	4,454	***				
3	Khmer	5,230	2,414	***	Russian	11,100	4,746	***				
4	Vietnamese	5,010	1,778	***	Korean	9,330	2,473					
5	Tagalog	4,510	1,343		Vietnamese	9,060	2,687					
6	Swahili	3,590	2,251	**	Chinese	7,660	2,069					
7	German	3,470	1,642	***	Hindi	4,830	1,902	***				
8	Russian	3,310	3,238	**	Amharic	4,390	2,588	***				
9	Japanese	3,300	1,246	***	Japanese	4,340	1,670	***				
10	Filipino	3,140	1,622	***	Arabic	4,250	3,054	***				
11	Chinese	2,800	1,376	***	Urdu	4,160	3,602	**				
12	Chamorro	2,460	1,392	***	Punjabi	3,620	1,756	***				

Source: American Community Survey, 2019 1-Year Public Use Microdata Sample

Note: Definitions of language categories including more than one dialect (e.g., Chinese, Hindi) are available in the 2019 ACS 1-year PUMS Code Lists file published at [https://www2.census.gov/programs-surveys/acs/tech\\_docs/pums/code\\_lists/ACSPUMS2019CodeLists.xls](https://www2.census.gov/programs-surveys/acs/tech_docs/pums/code_lists/ACSPUMS2019CodeLists.xls). \*\*Estimate deemed statistically unreliable. \*\*\*Standard error greater than 20% of estimate; use estimate with caution.

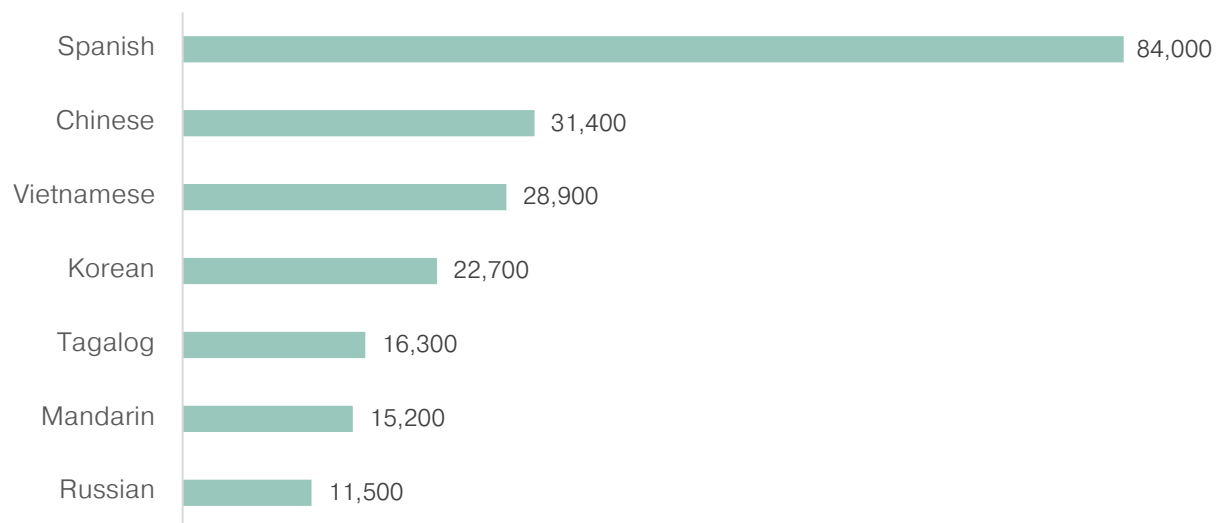
Nearly 1 million people in the region (roughly one quarter of the region’s total population) speak a language at home other than English. Of individuals over the age of five, 8.5% or 340,000 people speak English less than “very well.”

Among people who have limited English proficiency (LEP) or speak English less than “very well,” the largest number speak Spanish. There are 84,000 Spanish speakers with limited English proficiency, more than double the number of any other language.

Other common languages for people with limited English proficiency closely mirror the number of people speaking those languages, with the exception of Hindi. These include Chinese, Vietnamese, Korean, Tagalog, Mandarin, and Russian.

King County has the highest share of people with limited English proficiency (10.8%), followed by Snohomish County (7.8%) and Pierce County (5.3%). Kitsap County has the lowest share of residents with limited English proficiency (2.1%).

**Figure 21. Populations Speaking English Less Than “Very Well”: 2019**



Source: American Community Survey, 2019 1-Year Public Use Microdata Sample

Table 13. Limited English Proficiency: 2019

	Central Puget Sound		King County		Kitsap County		Pierce County		Snohomish County	
	Estimate	MoE	Estimate	MoE	Estimate	MoE	Estimate	MoE	Estimate	MoE
Population 5 years and over	3,996,800	****	2,125,400	****	255,700	233	845,700	931	770,000	469
Speak English only	3,051,500	20,694	1,499,300	15,521	238,300	2,581	719,800	8,229	594,100	10,631
Speak a language at home other than English	945,300	25,130	626,100	20,357	17,500	2,744	125,900	8,603	175,900	11,648
Speak English "very well"	604,700	18,751	395,500	14,979	12,100	2,176	81,400	6,403	115,700	9,031
Speak English less than "very well"	340,600	14,904	230,600	12,569	5,400	1,434	44,500	5,074	60,200	6,032
% Limited English proficiency	8.5%	****	10.8%	****	2.1%	0.6%	5.3%	0.6%	7.8%	0.8%

Source: American Community Survey, 2019 1-Year Estimates

Note: \*\*\*\*Estimate or input to estimate is controlled; a statistical test for sampling variability is not applicable.

Table 14. Ability to Speak English by Language Spoken at Home: 2019

LEP populations greater than 10,000			LEP populations 5,000 - 10,000			LEP populations 5,000 - 10,000 (accounting for MoE)		
	Estimate	MoE		Estimate	MoE		Estimate	MoE
Spanish	258,200	12,761	Japanese	24,200	4,485	French	19,900	4,632
Speak English less than "very well"	84,000	7,628	Speak English less than "very well"	8,720	2,261	Speak English less than "very well"	*** 4,900	2,370
% LEP	33%	2.6%	% LEP	36%	6.6%	% LEP	25%	8.0%
Chinese	67,400	7,735	Cantonese	15,200	4,301	Somali	*** 13,400	5,340
Speak English less than "very well"	31,400	4,222	Speak English less than "very well"	*** 7,130	2,704	Speak English less than "very well"	*** 4,500	2,217
% LEP	47%	3.9%	% LEP	47%	8.7%	% LEP	*** 34%	12.8%
Vietnamese	52,800	8,364	Amharic	*** 16,600	5,521	Filipino	11,500	3,176
Speak English less than "very well"	28,900	5,451	Speak English less than "very well"	*** 6,560	3,374	Speak English less than "very well"	*** 4,200	1,937
% LEP	55%	5.0%	% LEP	40%	12.9%	% LEP	37%	10.7%
Korean	41,900	5,704	Khmer	13,100	3,774			
Speak English less than "very well"	22,700	4,005	Speak English less than "very well"	6,370	1,949			
% LEP	54%	5.7%	% LEP	48%	9.1%			
Tagalog	39,500	5,785	Ukrainian	12,600	3,770			
Speak English less than "very well"	16,300	3,992	Speak English less than "very well"	5,970	1,843			
% LEP	41%	6.9%	% LEP	47%	8.1%			
Mandarin	31,600	5,051	Hindi	35,800	5,757			
Speak English less than "very well"	15,200	4,434	Speak English less than "very well"	*** 5,690	2,088			
% LEP	48%	8.5%	% LEP	16%	4.8%			
Russian	33,000	7,287	Arabic	*** 17,100	5,966			
Speak English less than "very well"	11,500	3,153	Speak English less than "very well"	*** 5,310	3,164			
% LEP	35%	5.1%	% LEP	*** 31%	13.4%			
			Punjabi	14,400	3,607			
			Speak English less than "very well"	5,160	1,504			
			% LEP	36%	6.3%			

Source: American Community Survey, 2019 1-Year Public Use Microdata Sample

Note: Definitions of language categories including more than one dialect (e.g., Chinese, Hindi) are available in the 2019 ACS 1-year PUMS Code Lists file published at [https://www2.census.gov/programs-surveys/acs/tech\\_docs/pums/code\\_lists/ACSPUMS2019CodeLists.xls](https://www2.census.gov/programs-surveys/acs/tech_docs/pums/code_lists/ACSPUMS2019CodeLists.xls). \*\*\*Standard error greater than 20% of estimate; use estimate with caution.



### 3 Next Steps

The Regional Demographic Profile provides a range of information on who lives in the region, including people of color, low-income populations, older adults, youth, people with disabilities, and people with limited English proficiency. The maps accompanying the tables and charts throughout the profile show where concentrations of various population groups live throughout the region. The information included in this profile assists PSRC in considering the needs of people traditionally underserved by transportation systems and regional planning.

In addition to a demographic profile produced every three years, PSRC provides additional data analysis for various work programs. The data included in this profile provides a framework for the planning work that takes place at the agency and in the region. This data is used to support advancing equity in policy and analysis, including in the equity analyses conducted for planning projects and data tools that are developed.

More information on the work to advance equity at PSRC can be found at [psrc.org/equity](https://psrc.org/equity).

## Appendix A. Data Sources

### Decennial Census

<u>Table #</u>	<u>Table Name</u>
Table P8	2000 Census – Summary File 1
Table P5	2010 Census – Summary File 1

### American Community Survey – 2019 1-Year Tables

<u>Table #</u>	<u>Table Name</u>
B03002	Hispanic or Latino Origin by Race
C17001	Poverty Status in the Past 12 Months by Sex by Age (all persons)
C17001A-1	Poverty Status in the Past 12 Months by Sex by Age (by race and Hispanic/Latinx Origin)
C17002	Ratio of Income to Poverty Level in the Past 12 Months
C17017	Poverty Status in the Past 12 Months by Household Type
C18130	Age by Disability Status by Poverty Status
B19013	Median Household Income in the Past 12 Months (in 2019 Inflation-Adjusted Dollars) (all households)
B19013A-1	Median Household Income in the Past 12 Months (in 2019 Inflation-Adjusted Dollars) (by race and Hispanic/Latinx Origin)
B19126	Median Household Income in the Past 12 Months (in 2019 Inflation-Adjusted Dollars) by Family Type by Presence of Own Children Under 18 Years
B25045	Tenure by Vehicles Available by Age of Householder

### American Community Survey – 2019 1-Year Public Use Microdata Sample (PUMS)

#### Income below 100% of poverty level

Universe: Persons for whom poverty status is determined

Data Item(s):

- Table 3: Poverty rates for American Indian and Alaska Native alone, Native Hawaiian and Other Pacific Islander alone, Some other race alone

Geography: Central Puget Sound region

- Table 6: Poverty rates by sex for American Indian and Alaska Native alone, Native Hawaiian and Other Pacific Islander alone, Some other race alone

Geography: Central Puget Sound region

- Table 8: Poverty rates for age 65-84 and age 85+ populations

Geography: Central Puget Sound region, counties

- Table 8: Poverty rates for age 65+ population by race and Hispanic/Latinx origin

Geography: Central Puget Sound region

- Table 9: Poverty rates for age 0-4 and age 5-17 populations

Geography: Central Puget Sound region, counties

- Table 9: Poverty rates for age <18 populations by race and Hispanic/Latinx origin

Geography: Central Puget Sound region

#### Income below 200% of poverty level

Universe: Persons for whom poverty status is determined

Data Item(s):

- Table 3: Low-income population shares for all persons and by race and Hispanic/Latinx origin

Geography: Central Puget Sound region, counties

- Table 6: Low-income population shares by sex for all persons and by race and Hispanic/Latinx origin

Geography: Central Puget Sound region, counties

#### Median household income

Universe: Households

Data Item(s):

- Table 4: Median household income for all households and by race and Hispanic/Latinx origin of householder

Geography: Central Puget Sound region

- Table 4: Median household income for people of color householders

Geography: Central Puget Sound region, counties

Income below 100% of poverty level by disability status

Universe: Civilian noninstitutionalized population for whom poverty status is determined

Data Item(s):

- Table 10: Poverty rates for persons with one or more disabilities for age 5-17 and age 65+ populations and by race and Hispanic origin

Geography: Central Puget Sound region

Zero car households

Universe: Households

Data Item(s):

- Table 11: Number and percent share of households with no vehicle for households with a person of color householder, households with income below 100% poverty, and households with one or more persons with a disability

Geography: Central Puget Sound region, counties

Language spoken at home other than English

Universe: Population 5 years and over

Data Item(s):

- Table 12: Populations by language spoken at home other than English

Geography: Central Puget Sound region, counties

Limited English proficiency

Universe: Population 5 years and over

Data Item(s):

- Table 14: Limited English proficiency (LEP) populations and percent population shares by language spoken at home

Geography: Central Puget Sound region

## American Community Survey – 2015-2019 5-Year Tables

<u>Table #</u>	<u>Table Name</u>
B02015	Asian Alone by Selected Groups

## American Community Survey – 2015-2019 5-Year Public Use Microdata Sample (PUMS)

### Income below 100% of poverty level

Universe: Persons for whom poverty status is determined

Data Item(s):

- Poverty rates for Asian alone population and for selected Asian alone groups

Geography: Central Puget Sound region

### Median household income

Universe: Households

Data Item(s):

- Median household income for Asian alone householders and for selected Asian alone groups

Geography: Central Puget Sound region