



Appendix B

Growing Transit Communities Partnership Program, Process, Participants and Products

In 2010, the Puget Sound Regional Council (PSRC) led a broad consortium of other agencies and organizations in a successful application for a Sustainable Communities Implementation Grant from the Office of Sustainable Communities at the federal Department of Housing and Urban Development. This \$5 million grant funded the work of what became known as the Growing Transit Communities Partnership (Partnership) for a three-year period starting in February 2011.

The work program and governance structure for the Partnership is set forth in the Central Puget Sound Growing Transit Communities Consortium Agreement Memorandum of Understanding, which was signed by the original grant co-applicants. Outreach to other regional stakeholders during the grant period resulted in several additional agencies and organizations becoming signatories as well.

The Growing Transit Communities Partnership is housed at the Puget Sound Regional Council. PSRC provides primary staffing for the project. Additional staffing is provided by A Regional Coalition for Housing and Impact Capital.

Program

The Growing Transit Communities Strategy, adopted in July 2013 by the Growing Transit Communities Oversight Committee and endorsed in September 2013 by the Puget Sound Regional Council, represents a region-wide, cross-sector collaboration to overcome key implementation challenges of VISION 2040—the long-range growth strategy for the central Puget Sound region adopted as the region’s Multicounty Planning Policies under the Growth Management Act. The Strategy identifies specific actions and tools to attract residential and employment growth to transit investments, provide more housing choices near transit, and increase equitable access to opportunity for current and future residents of transit communities. Furthermore, the process of developing the Strategy, and its Regional Compact framework for implementation, creates the necessary cross-sector collaboration, innovative community engagement, and thorough data analysis to achieve the vision of thriving and equitable transit communities.

The Strategy is the culmination of a three-year work program that includes four major components: corridor-based planning, a regional equity network, affordable housing tools, and innovative demonstration projects. Key work products and events completed under each element are highlighted below:

Corridor-Based Planning

- **Growing Transit Communities Compact**, with numeric goals for growth and affordability in the region’s transit station areas, and an ongoing commitment to collaboration and action.
- **Toolkit of Recommended Strategies and Actions** with a range of overarching regional approaches to local and individual actions, providing a set of coordinated steps.
- **People + Place Implementation Typology** to link strategies and investments to transit communities based on current needs and opportunities.
- Comprehensive **Existing Conditions Report** and **Transit-Oriented Development Market Study** for 74 transit communities across the region.

A Regional Equity Network

- Cross-sector stakeholder body — the **Equity Network** — to provide a forum and expertise on equitable development principles and strategies.
- Comprehensive regional **Opportunity Mapping**: “Equity, Opportunity, and Sustainability in the Central Puget Sound Region.”
- 54 **Capacity-Building Grants** totaling \$450,000 to 43 community-based organizations to support engagement, outreach, organizing, and research.
- Two-day **Puget Sound Equity Summit** that brought together over 400 community members, activists, and representatives of the public and private sector.

Affordable Housing Tools

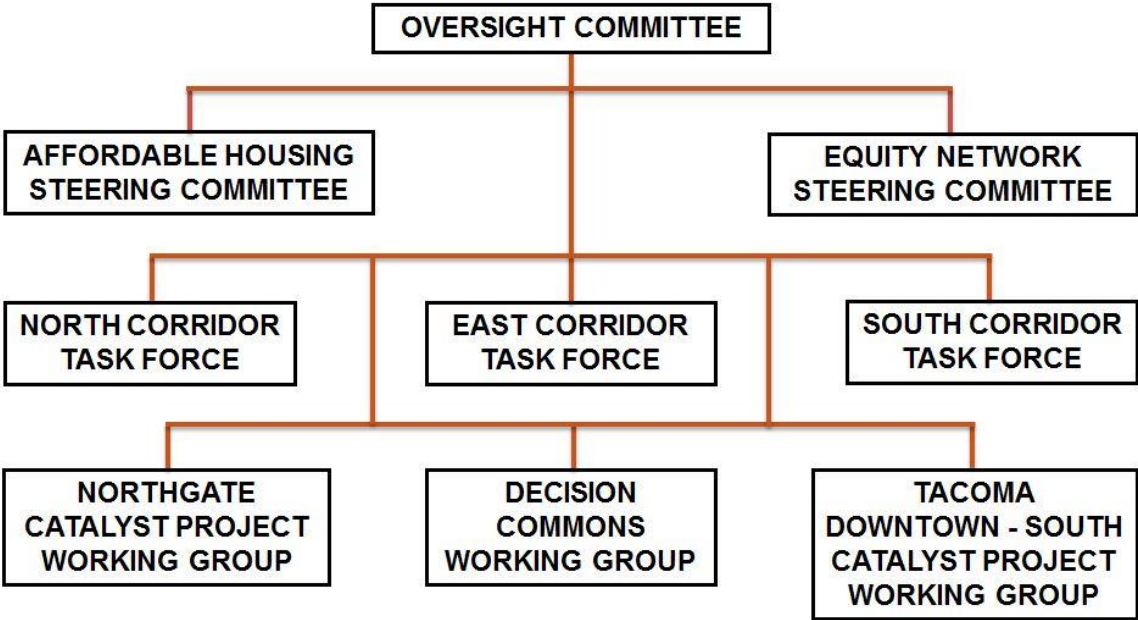
- White paper and business plan for a **Regional Equitable Development Initiative (REDI)** fund to encourage affordable housing preservation and production near transit.
- Regional **Fair Housing Equity Assessment** to identify barriers to fair housing choice across the central Puget Sound region, and regional strategies to address them.
- White paper and draft legislation on an **Equitable Value-Capture Financing Tool** to fund local infrastructure investments to support growth and affordable housing.
- Inventory of **Publicly Owned Lands** in transit communities and recommendations for use of surplus lands.
- Regional **Subsidized Housing Database** mapping all publicly-supported and owned housing units in the region.

Innovative Demonstration Projects

- **Area-wide Environmental Impact Statement** and **Subarea Plan** for Tacoma’s South Downtown neighborhood.
- **Urban Design Framework** and **Healthy Transit Communities Principles** for Seattle’s Northgate station area and urban center.
- Best Practices and **Implementation Support** for East Link station areas in Bellevue and Redmond, taking the next steps to implement station area plans.

Process and Participants

The organizational framework for the Growing Transit Communities Partnership is illustrated in Figure X. An Oversight Committee provides overall governance. Two Steering Committees provide topic specific guidance to the Oversight Committee in two important areas of the Growing Transit Communities work: affordable housing and social equity. From fall 2011 to spring 2013, stakeholders engaged in the corridor planning process met as task forces focused on the North, East, and South corridors respectively. Finally, guidance for several Catalyst Demonstration Projects was provided by dedicated working groups.



1: Growing Transit Communities Organizational Structure

Oversight Committee

Under the Consortium Agreement, primary governance for the work of the Partnership is carried out by an Oversight Committee consisting of all MOU signatories. The Oversight Committee provides guidance to staff of PSRC and partner agencies as they have carried out the work program. The Committee also approves all grant-funded reports and deliverables. The Committee has met at least quarterly throughout the grant period. Ground rules applicable to all committees and task forces and adopted by the Oversight Committee establish an inclusive process of decision making by consensus. The Oversight Committee members include:

- Chair, Commissioner Josh Brown, Kitsap County, *PSRC*
- Vice-Chair, Tony To, Executive Director, *Homesight, Community Development Collaborative/Equity Partnership*
- Connie Brown, Executive Director, *Tacoma-Pierce County Affordable Housing Consortium*

- Bryan Wahl, Councilmember, *City of Mountlake Terrace*
- Dr. Anthony Chen, Director of Health, *Tacoma-Pierce County Health Department*
- Troy Christensen, Clinical Coordinator, *Pierce County Human Services*
- Carrie Cihak, Director of Policy and Strategic Initiatives, *King County*
- Don Davidson, Councilmember, *City of Bellevue*
- Bob Davis, Executive Director, *Snohomish County Housing Authority*
- Van Dinh Kuno, Executive Director, *Immigrant and Refugee Services Northwest*
- Gene Duvernoy, President, *Forterra*
- Chris Eggen, Deputy Mayor, *City of Shoreline*
- Dr. David Fleming, Director and Health Officer, *Public Health—Seattle & King County*
- Daniel Friedman, Dean, *College of Built Environments, Runstad Center for Real Estate Studies, University of Washington*
- Allan Giffen, Planning Director, *City of Everett*
- John Hempelmann, Chair, *Quality Growth Alliance*
- Harry Hoffman, Executive Director, *Housing Consortium Seattle & King County*
- Ric Ilgenfritz, Executive Director, *Planning, Environment and Project Development, Sound Transit*
- Ray Johnston, Board Member, *Futurewise*
- Karen Larkin, Assistant Director, *Washington State Department of Commerce*
- M.A. Leonard, Vice President, *Enterprise Community Partners*
- Al Levine, Deputy Executive Director, *Seattle Housing Authority*
- Corey Lew, *Pierce County Community Connections*
- Sarah Lewontin, Executive Director, *Bellwether Housing*
- Kelly Mann, Executive Director, *Urban Land Institute—Seattle District Council*
- Steve Marek, Environmental Health Division Director, *Tacoma Pierce County Health Department*
- Mike McGinn, Mayor, *City of Seattle*
- Michael Mirra, Executive Director, *Tacoma Housing Authority*
- Todd Morrow, Chief of Strategic Communications, *Community Transit*
- Rachael Myers, Executive Director, *Washington Low-Income Housing Alliance*
- Kerry Nicholson, Senior VP Washington/Oregon Legacy Partners, *Urban Land Institute*
- Judith Olsen, Executive Director, *Impact Capital, CDC Collaborative/Equity Partnership*
- Adam Parast, *Seattle Transit Blog*
- Christopher Persons, Executive Director Capitol Hill Housing, *CDC Collaborative/Equity Partnership*
- Mark Smith, Executive Director, *Housing Consortium of Everett and Snohomish County*
- Ken Stark, Director of Human Services, *Snohomish County*
- John Stilin, Councilmember, *City of Redmond*
- Arthur Sullivan, Program Manager, *A Regional Coalition for Housing (ARCH)*
- Bryan Wahl, Councilmember, *City of Mountlake Terrace*
- Lauren Walker, Councilmember, *City of Tacoma*
- Steve Walker, *Washington State Housing Finance Commission*
- Dan Watson, Deputy Director, *King County Housing Authority*
- David West, Executive Director, *Puget Sound Sage*

Equity Network Steering Committee

The Regional Equity Network had several important roles in the Growing Transit Communities work. These included providing guidance to the Oversight Committee on issues of social equity in policies and policy implementation in transit communities. The committee also constituted members of a new Regional Equity Network and provided oversight for the community-based Equity Grants.

The committee roster brings together equity advocates from across the region, including representatives from community development organizations, public health agencies, affordable housing organizations, local governments, regional environmental advocates, social and economic justice organizations, special needs transportation coalitions, and ethnic and cultural service organizations. In addition to these various stakeholders, the committee included diverse representation in terms of geography, race and ethnicity, gender, and community issues. The committee, chaired by Tony To, Executive Director, HomeSight and Tracy Reich, Director of Community Programs, Impact Capital, met every two to three months throughout the Growing Transit Communities grant period.

Several primary objectives gave direction to the work of the Equity Network Steering Committee, including:

- Ensuring an equity framework was used in all aspects of the program;
- Ensuring low-income communities and communities of color have a real voice in decision-making; and
- Promoting policies that support equitable outcomes and meaningful community engagement.

The Network developed and ratified the Principles of Equitable Development that provide further definition, as well as a guide for organizing and policy work for equitable development. Through participation on the three corridor task forces and through comments submitted at key junctures to the Oversight Committee, the Steering Committee influenced the development of the Growing Transit Communities Strategy.

Finally, the committee provided oversight for the Equity Grant Program, including developing grant guidelines, participating on the regional review committee, and providing support to grantee organizations along the transit corridors. Through this program nearly \$450,000 supporting 36 projects undertaken by 30 community-based organizations was invested in outreach and engagement, locally-focused research, and organizing projects throughout the transit corridors. Capacity building and peer learning were important components of the work. This included:

- Grantee workshops to build knowledge of planning processes and transit-oriented development;
- Regional gatherings every three to four months to create a space to build a peer community, strengthen the equity voice on the task forces, and to collectively better understand the key issues and opportunities along the transit corridors;

- Technical assistance and support for the grantees; and
- A regional Equity Summit (November 2013).

Members of the Equity Network Steering Committee included:

- Co-Chair, Tony To, *HomeSight*
- Co-Chair, Tracy Reich, *Impact Capital*
- Emily Alvarado / Kelly Rider, *Housing Consortium Seattle-King County*
- Aileen Balahadia/ Patricia Julio *White Center Community Development Association*
- Alex Brennan / Chris Persons, *Capitol Hill Housing*
- Connie Brown, *Tacoma-Pierce County Housing Consortium*
- Joy Bryngelson, *Seattle Housing Authority*
- Rose Curran, *King County Housing and Community Development*
- Colleen Kelly, *City of Redmond Human Services Division*
- Hyeok Kim / Tom Im, *Interim Community Development Association*
- Dannette Klemens, *Snohomish County Transportation Coalition (SNOTRAC)*
- Van Dinh Kuno, *Immigrant and Refugee Services Northwest*
- Ngozi Oleru, *Seattle-King County Public Health*
- Kristin Pula, *HomeSight*
- June Robinson, *Housing Consortium Everett-Snohomish County*
- Rebecca Saldana, *Puget Sound Sage*
- Skye Schell, *Forterra*
- Marianne Seifert / Amy Pow, *Tacoma-Pierce County Health Department*
- Linda Villegas Bremer / Marya Gingrey, *City of Tacoma*
- Jeff Watson, *Snohomish County Human Services*
- Maiko Winkler-Chin, *Seattle Chinatown International District Preservation Development Authority*
- Liz Peterson Ward, *African American Leadership Forum*
- Michelle Zeidman / Jon Morrison Winters, *King County Mobility Coalition/Hopelink*
- Victoria Woodards, *Tacoma Urban League*
- Nora Liu, *City of Seattle, Department of Neighborhoods*
- Brock Howell, *Futurewise*
- Shefali Ranganathan, *Transportation Choices Coalition*

Affordable Housing Steering Committee

The Affordable Housing Steering Committee provides the Oversight Committee with guidance on topics related to housing and housing affordability. The Committee, which is chaired by two representatives of agencies in the Consortium, has as its members staff from governmental and non-governmental sectors, including local jurisdictions, housing authorities, affordable housing developers, financial institutions, advocacy organizations, community development organizations, and others.

As an advisory body, the Affordable Housing Steering Committee submitted comment letters to the Oversight Committee and Corridor Task Forces on major grant products, such as the Growing Transit Communities Strategy, especially as they pertained to housing affordability.

The Committee also had a primary responsibility to oversee the affordable housing related tasks identified in the Growing Transit Communities work plan, which included advancement of a defined set of tools: surplus public lands, value capture financing, inclusionary and incentive zoning, and a regional TOD property acquisition fund. A subcommittee convened around each of these efforts for the purpose of developing reports and proposals for consideration by the full Steering Committee. The results of this work are reflected in several of the strategies recommended in this report.

Members of the Affordable Housing Steering Committee included:

- Chair, Ryan Curren, *City of Seattle*
- Co-Chair, Walter Zisette, *Tacoma Housing Authority*
- Emily Alvarado, *Housing Development Consortium Seattle-King County*
- Donna Batch, *HUD*
- Connie Brown, *Tacoma-Pierce County Affordable Housing Consortium*
- Stephen Butler, *City of Mill Creek*
- Troy Christensen, *Pierce County Human Services*
- Nick Federici, *Washington Low Income Housing Alliance*
- Jeff Foster, *GGLO*
- Melanie Gillespie, *Impact Capital*
- Charlie Gray, *Pierce County Housing Authority*
- Heidi Hall, *Equity Network*
- Hyeok Kim, *InterIm Community Development Association*
- Scott Kirkpatrick, *Sound Transit*
- Dave Koenig, *City of Everett*
- Maureen Kostyack, *City of Seattle*
- Tory Laughlin Taylor, *Housing Resources Group*
- MA Leonard, *Enterprise Community Partners*
- Al Levine, *Seattle Housing Authority*
- Corey Lew, *Pierce County Community Connections*
- Kate Lichtenstein, *Sound Transit*
- Kelly Mann, *Urban Land Institute — Seattle District Chapter*
- Cheryl Markham, *King County Housing and Community Development Program*
- Jeanette McKague, *Washington Realtors*
- Ryan Mielcarek, *Office of Public Housing*
- Ike Nwankwo, *Washington State Department of Commerce*
- Judith Olsen, *Impact Capital*
- Chris Persons, *Community Development Collaborative: Capitol Hill Housing*
- Kristen Pula, *Community Development Collaborative: HomeSight*
- April Putney, *Futurewise*
- Kelly Rider, *Housing Development Consortium Seattle-King County*
- June Robinson, *Housing Consortium of Everett and Snohomish County*
- Mark Smith, *Housing Consortium of Everett and Snohomish County*

- Sarah Stiteler, *City of Redmond*
- Arthur Sullivan, *A Regional Coalition for Housing*
- Skip Swenson, *Forterra*
- Ric Teasley, *City of Tacoma*
- Michele Thomas, *Washington Low Income Housing Alliance*
- Stephanie Van Dyke, *Seattle Housing Authority*
- Steve Walker, *Washington State Housing Finance Commission*
- Dan Watson, *King County Housing Authority*
- Jeffrey Watson, *Snohomish County*
- Dean Weitenhagen, *Snohomish County*

Corridor Task Forces

The 74 study areas that were the focus of the Growing Transit Communities Partnership are located within three distinct long-range light rail corridors: North from Seattle to Everett, East from Seattle to Redmond, and South from Seattle to Tacoma. A task force for each corridor was convened to work collaboratively on corridor based strategies and recommended actions to support thriving and equitable transit communities.

Task force membership consisted of stakeholders within each corridor, including community interests (affordable housing, regional and neighborhood organizations, social equity groups), public agencies (cities with jurisdiction in the corridors, counties, public health, transit), and business, educational, environmental, and philanthropic institutions active in the areas of economic development, education, environment, finance, business, philanthropy and real estate development.

The members of the three Corridor Task Forces are listed below:

South Corridor Task Force

- Chair, Charlene Anderson, *City of Kent*
- Co-Chair, Kristin Pula, *HomeSight*
- Jan Arntz, *University of Washington*
- Andrew Austin, *Transportation Choices*
- Cindy Baker, Mike Scarey, *City of SeaTac*
- Tom Berquist, *BECU*
- Connie Brown, *Tacoma-Pierce County Affordable Housing Consortium*
- Kristen Bryant, *Sierra Club*
- Isaac Conlen, *City of Federal Way*
- Nora Gierloff, *City of Tukwila*
- Sibyl Glasby, *Mercy Housing*
- David Goldberg, Lyle Bicknell, *City of Seattle*
- Monica Hall, *New Holly Neighborhood Groups*
- Jesse Hamashima, *Pierce County*
- Denise Lathrop, *City of Des Moines*
- Tina Lee, Monica Adams, *Pierce Transit*

- Jim Mueller, *JC Mueller LLC*
- Ian Munce, *City of Tacoma*
- Quang Nguyen, *MLK Business Association*
- Chris Pasinetti, *City of Fife*
- Amy Pow, *Tacoma-Pierce County Health Department*
- Cathal Ridge, Eric Chipps, *Sound Transit*
- Skye Schell, *Forterra*
- Daphne Schneider, *Othello Park Alliance*
- Marianne Seifert, *Tacoma-Pierce County Health Department*
- Lucy Steers, Mary Gates, *Municipal League of King County*
- Andrew Strobel, *Puyallup Tribe*
- Paul Takamine, *King County*
- Lynn Wallace, *Southwest King County Chamber of Commerce*
- Julie West, *Public Health – Seattle and King County*
- Larry Yok, *Highline Community College*
- Gloria Gould-Wessen, *City of Kent*

Alternates

- Ken Gill, *City of Fife*
- Barry Holldorf, *Highline Community College*
- Jared Jonson, *King County*
- Becca Meredith, *Forterra*
- Rob Olson, *Tacoma-Pierce County Public Health Department*
- Shawn Phelps, *Pierce County*
- Jaimie Reavis, *City of Tukwila*
- Peter Rimbos, *Sierra Club*
- Michael Scarey, *City of SeaTac*
- Milt Tremblay, *University of Washington*
- Boting Zhang, *Mercy Housing*

East Corridor Task Force

- Co-Chair, Doug Mathews, *Bellevue Community Representative*
- Co-Chair, Lori Peckol, *City of Redmond*
- Lyle Bicknell, *City of Seattle*
- William Biggs, *Redmond Economic Development Alliance*
- Suzanne Cartwright, *University of Washington—Runstad Center for Real Estate Studies*
- Chris Cole, *Sher Partners*
- Gordon Dutrisac, *DigiPen Institute of Technology*
- Wes Edwards, *King County*
- Hal Ferris, *Bellevue Planning Commission*
- Scott Greenberg, *City of Mercer Island*
- Tom Hinman, *Redmond Community Representative*
- Emil King, *City of Bellevue*

- Kathe Low, *Sustainable Redmond*
- Ann Levine, *Imagine Housing*
- Leonard McGhee, *Sound Transit*
- Adam Parast, *Seattle Transit Blog*
- Jessica Powers, *Wright Runstad and Company*
- Tracy Reich, *Impact Capital*
- Kelly Rider, *Housing Development Consortium-Seattle and King County*
- Dave Russell, *Forterra*
- Jim Stanton, *Microsoft*
- Tom Stowe, *Councilmember, Town of Beaux Arts Village*
- Arthur Sullivan, *A Regional Coalition for Housing (ARCH)*
- Phil Wood, *Jones Lang LaSalle*
- Gerald Wright, *Hopelink*

Alternates

- Jeff Aken, *Forterra*
- Emily Alvarado, *Housing Development Consortium-Seattle and King County*
- Eric Evans, *Imagine Housing*
- Paul Inghram, *City of Bellevue*
- Trinity Parker, *Sound Transit*
- Len Psyk, *Redmond Economic Development Alliance*
- Sarah Stiteler, *City of Redmond*
- Jonathan Morrison Winters, *Hopelink*

North Corridor Task Force

- Co-Chair, Shane Hope, *City of Mountlake Terrace*
- Co-Chair, Catherine Stanford, *Leadership for Great Neighborhoods*
- Rebecca Barnes, *University of Washington*
- Paul Cohen, *City of Shoreline*
- Pat Cordova, *Community Homework Center*
- June DeVoll, *Community Transit*
- Chris Fiori, *Heartland*
- Allan Giffen, *City of Everett*
- Heidi Hall, *Equity Network*
- Tom Hauger, *City of Seattle*
- Brock Howell, *Futurewise*
- Chris Jowell, *Senior Services of Snohomish County*
- Paul Krauss, *City of Lynnwood*
- Craig Krueger, *Community Land Planning*
- Van Kuno, *Immigrant & Refugee Services Northwest*
- Jay Larson, *Snohomish County*
- Tory Laughlin Taylor, *Bellweather Housing*
- Sally Marks, *King County*

- Peter Mayer, *Snohomish Health District*
- Donna Moss, *Shoreline Community Member*
- Patrick Pierce, *Economic Alliance of Snohomish County*
- Gary Prince, *King County Metro Transit*
- Linda Pruitt, *The Cottage Company*
- Fred Safstrom, *Housing Hope*
- Matt Shelden, *Sound Transit*
- Reid Shockey, *Shockey Planning Group*
- Brian Sullivan, *Seattle Housing Authority*
- Julie West, *Public Health – Seattle and King County*
- Rich White, *Boeing*

Alternates

- Peter Dane, *City of Mountlake Terrace*
- Brigitte Fisher, *Immigrant and Refugee Services Northwest*
- David Goldberg, *City of Seattle*
- Jeanette Henderson, *University of Washington*
- Jared Jonson, *King County*
- Kristin Kelly, *Futurewise*
- Dave Koenig, *City of Everett*
- Janiene Lambert, *City of Lynnwood*
- Kate Lichtenstein, *Sound Transit*
- Rachael Markle, *City of Shoreline*
- Troy McClelland, *Economic Alliance of Snohomish County*
- Michael Zelinski, *Snohomish County*

Corridor-based task forces met monthly starting in November 2011 and concluded their work in Summer 2013.

The work of the task forces occurred in three phases: data analysis, typology, and recommended strategies. During the data analysis phase, the task forces provided input to staff on the scope, content, and study areas for the Existing Conditions Report in the areas of demographics, economics, land use, transportation, housing, and policy context for corridor planning. Drafts of each of the report chapters provided crucial information for initial discussions among task force members on the opportunities and challenges facing communities in each corridor in achieving thriving and equitable TOD. Consultant products, including a market study and housing and commercial real estate demand estimates, also informed this and latter phases of the work.

During the next phase of work, task force members used the data on each corridor as a starting point for developing a typology for the transit communities in the central Puget Sound region. With the assistance of a consultant team from Reconnecting America, the task forces reached agreement on the People + Place typology framework described in Appendix D. Representatives from each community worked closely with PSRC staff to type each study area within this framework. See Appendix D for more information on the methods and results of the typology.

The final phase of work for the task forces focused on identifying regional and local strategies for governments and public agencies, business and community groups, and non-profit stakeholders. The task forces further identified recommended actions to be taken by various public and private agencies and organizations to advance those strategies. The task forces, jointly, reached consensus on strategies and actions applicable in all corridors, and each task force, separately, reached consensus on more localized priorities for each corridor individually. This phase of the work was informed by additional consultant reports, including recommendations from the Center for Transit Oriented Development contained in the report “Implementing Equitable Transit Communities” (January 2013).

In spring 2013, the task forces forwarded their collective recommendations to the Oversight Committee. With additional input from each of the steering committees, the Oversight Committee approved the Growing Transit Communities Strategy for release in May 2013 as a public review draft. In response, the Committee received 56 comments for stakeholders throughout the region. The Oversight Committee approved a final revised Regional Growing Transit Communities Compact and Growing Transit Communities Strategy at its meeting on July 12, including direction to address several unresolved issues before releasing the document with full consensus of the Committee members in fall 2013.

Throughout the corridor planning process, input from the public and from stakeholders was solicited through public events and outreach. A Growing Transit Communities Kick-Off Event was held in September 2011 and attended by over 400 policy makers, agency staff, representatives of major community and stakeholder organizations, and members of the public. In addition, mid-way through the Corridor Task Force process, in October 2012, an Implementation Strategies Workshop was held as a forum for input and dialogue among task force members and members of the public related to proposed strategies for transit communities in the light rail corridors. Throughout the Growing Transit Communities grant period, and specifically at key points throughout the corridor planning process, PSRC staff also reached out to jurisdictions, agencies, organizations, and community groups with briefings and updates as well as upon request to respond to any questions or concerns about the work of the Partnership.

Major Products and Events

The Growing Transit Communities Partnership produced many studies and reports that informed the strategies and actions put forth in the Strategy. They include:

- *Equity, Opportunity and Sustainability in the Central Puget Sound Region: Geography of Opportunity*. Kirwan Institute and Puget Sound Regional Council. 2012. [Link](#).
- *Business Roundtable Discussions Summary Report*. PRR for Growing Transit Communities Partnership. 2012. [Link](#).
- *ULI Technical Assistance Panel Recommendations*. Urban Land Institute for Growing Transit Communities. 2012. [Link](#).

- *A Regional TOD Fund: Ensuring that Transit Communities Grow Equitably*. Growing Transit Communities. 2012. [Link](#).
- *Incentivizing TOD: Case Studies of Regional Program throughout the United States*. Strategic Economics for Growing Transit Communities Partnership. 2012. [Link](#).
- *Puget Sound Region Transit-Oriented Development Market Study*. Strategic Economics for Growing Transit Communities Partnership. 2012. [Link](#).
- *Puget Sound Region TOD Demand Estimates*. Strategic Economics for Growing Transit Communities. 2012. [Link](#).
- *Existing Conditions Reports*. Growing Transit Communities Partnership. 2013. Links: [Introduction](#); [Demographics](#); [Economy](#); [Land Use, Form, and Development](#); [Housing and Housing Affordability](#); [Transportation](#); [Policy and Regulatory Environment](#).
- *Implementing Equitable Transit Communities: Regional & local recommendations for the central Puget Sound region*. Center for Transit Oriented Development. 2013. [Link](#)
- *Value Capture Financing in Washington State*. Growing Transit Communities. 2013. [Link](#)
- *The Growing Transit Communities Strategy: A Transit Corridor Action Agenda for the Central Puget Sound*. The Growing Transit Communities Partnership. 2013. [Link](#)
- *East Corridor Implementation Support Project*. The Growing Transit Communities Partnership and OTAK. 2013. Links:
 - [Phase 1: Best Practices Research and Assessment of Station Areas](#)
 - Phase 2: Implementation Support Materials: [Housing, Development, and Infrastructure Funding](#); [Vibrant Urban Neighborhoods](#); [Business Retention and Attraction](#); [Overlake Village District Energy Concepts and EcoDistrict Applicability](#); [130th Avenue NE Transit-Oriented Development](#); [Benefits of Green Transit-Oriented Development](#); [Stakeholder Involvement and Outreach](#); [Transit Integration and Parking Management](#); [Bicycle and Pedestrian Connectivity](#)
- *Equity in Action: Communities Lead the Way in Equitable Development*. The Regional Equity Network. 2013. Video links: [Full version](#). [Short version](#).
- *Tacoma South Downtown Subarea Plan and Planned Environmental Impact Statement*. City of Tacoma. A demonstration project of the Growing Transit Communities Partnership. 2013. [Link](#)
- *Northgate Urban Design Framework*. City of Seattle. A demonstration project of the Growing Transit Communities Partnership. 2013. [Link](#)
- *Equity Grant Program Final Report*. Regional Equity Network. 2014. [Link](#)
- *Equity Grant Program Project Summaries*. Regional Equity Network. 2014. [Link](#)
- *Fair Housing Equity Assessment for the Central Puget Sound Region*. The Growing Transit Communities Partnership and Fair Housing Washington. 2014. [Link](#)

- *Central Puget Sound Regional Equitable Development Initiative (REDI) Fund: A Business Plan Framework.* The Growing Transit Communities Partnership, Enterprise Community Loan Fund and Impact Capital. 2014. [Link](#)

The Growing Transit Communities Partnership also held several regional events to engage stakeholders and members of the public to develop recommendations to attract growth, provide housing choices, and improve access to opportunity in the region. They include:

- *Growing Transit Communities Kick-Off Event.* Seattle. 2012. 400+ attendees.
- *Equity and Health in Transportation Planning Regional Conference.* Tacoma. 2012. 200+ attendees.
- *Growing Transit Communities Implementation Strategies Workshop.* Seattle. 2012. 150+ attendees.
- *Central Puget Sound Regional Equity Summit.* Des Moines. 2013. 400+ attendees.
- *People + Place: Action for a Sustainable Future.* Seattle. 2013. 150+ attendees.