

# Welcome and General Meeting Procedures

## Welcome to the Passenger-Only Ferry Study Updates – Webinar 2

- This is a listen-only webinar
- Please use the chat feature for questions or comments – please do not use the “raise hand” feature
- Questions or comments will be placed in a queue for PSRC staff to read and provide answers at appropriate times during the webinar
- Please note: the meeting is being recorded, and the chat box is part of the public record





# Puget Sound Passenger-Only Ferry Study

August 20, 2020 Webinar



Puget Sound Regional Council

# 2020 Puget Sound Passenger-Only Ferry Study



## Overview of Project Scope:

- 12-County Puget Sound Region, including Lake Washington and Lake Union
- Analyze potential new passenger-only routes:
  - Terminal locations and capacity
  - Passenger demand/ridership
  - Capital and operating elements
- Assess environmental aspects of POF service
- Conduct early, inclusive, and continuous outreach



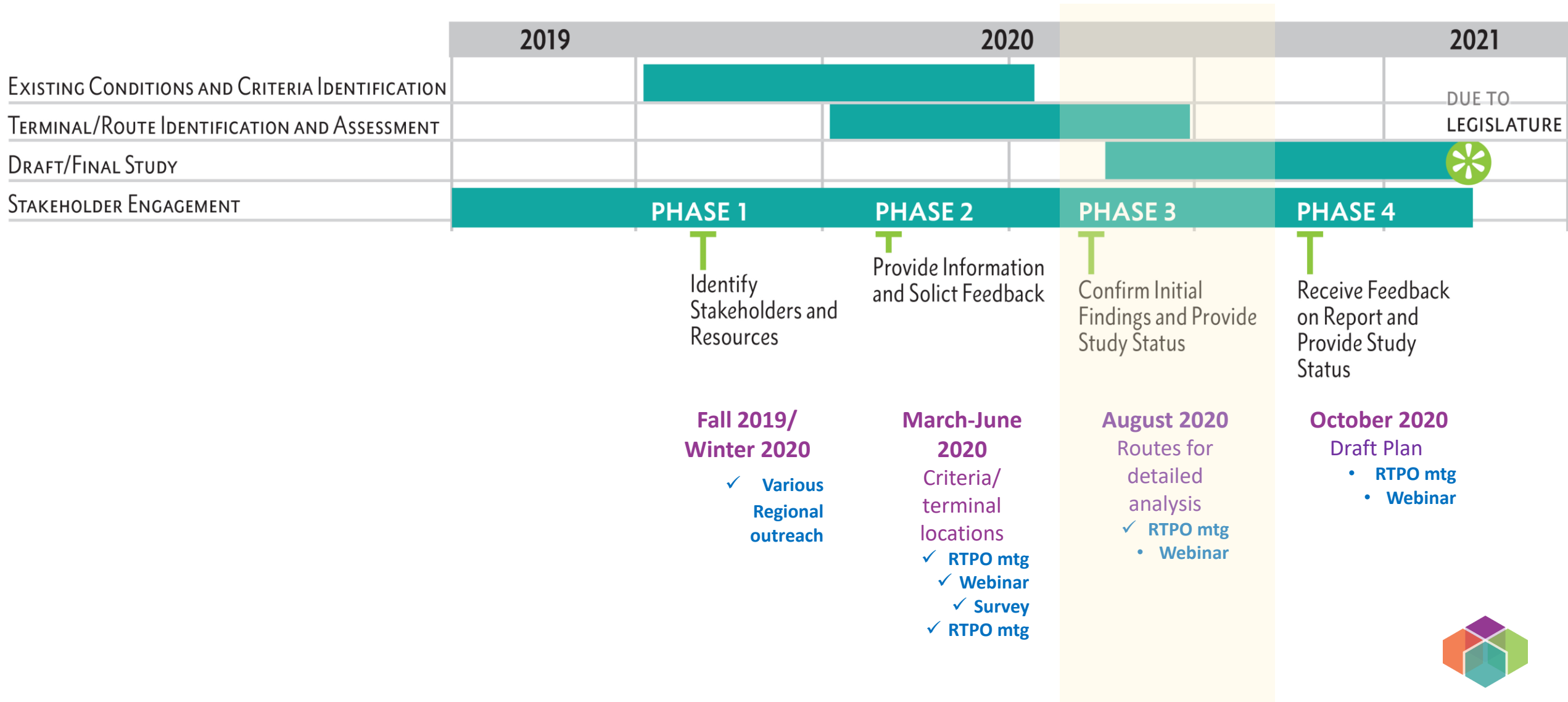
Progressions  
Sawyer & Associates Consulting



LUND FAUCETT

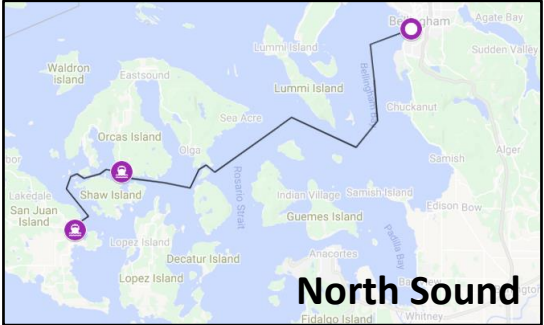
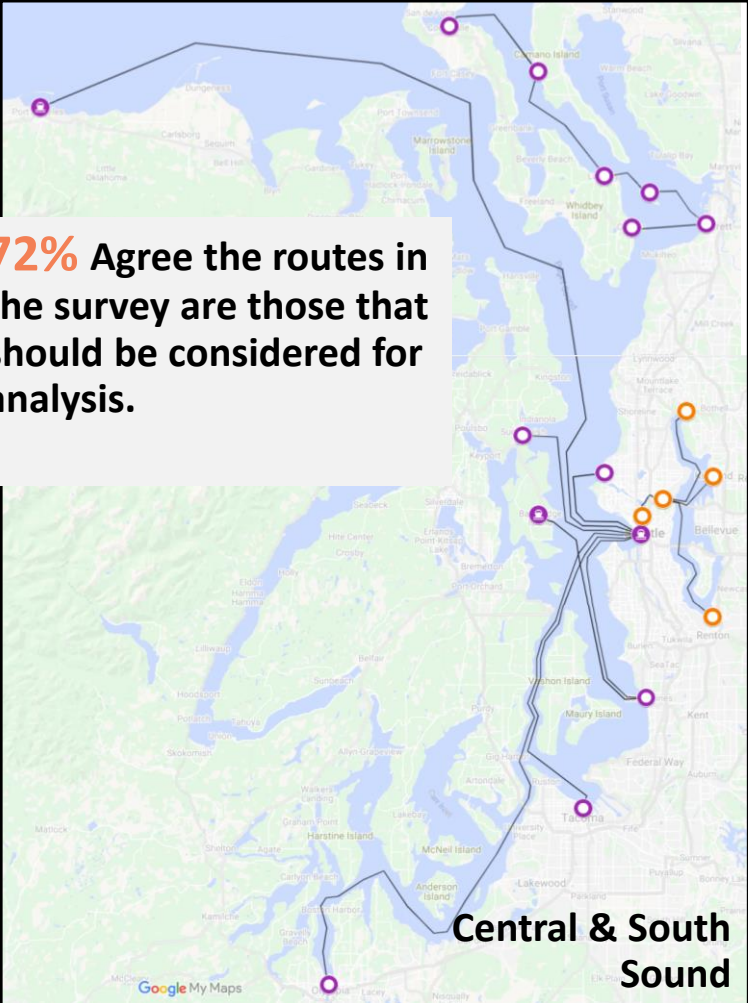


# Puget Sound POF Study Schedule



# Survey Response- Routes & Counties of Origin

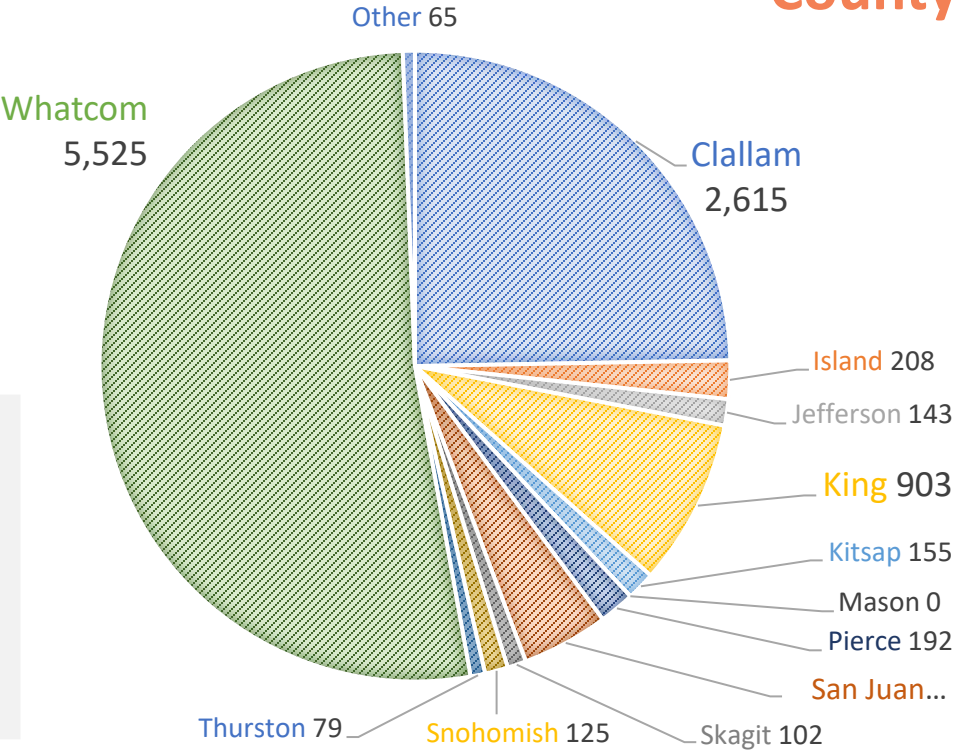
## Routes listed on survey



## Example of notable write-in routes

- Port Townsend – Downtown Seattle
- Port Townsend – Bellingham
- Orcas Island – Bellingham
- Camano Island – Everett
- Tacoma – Olympia

## Respondents by County



**10,582 Total Responses!**

# Survey Response – Geographic Priorities

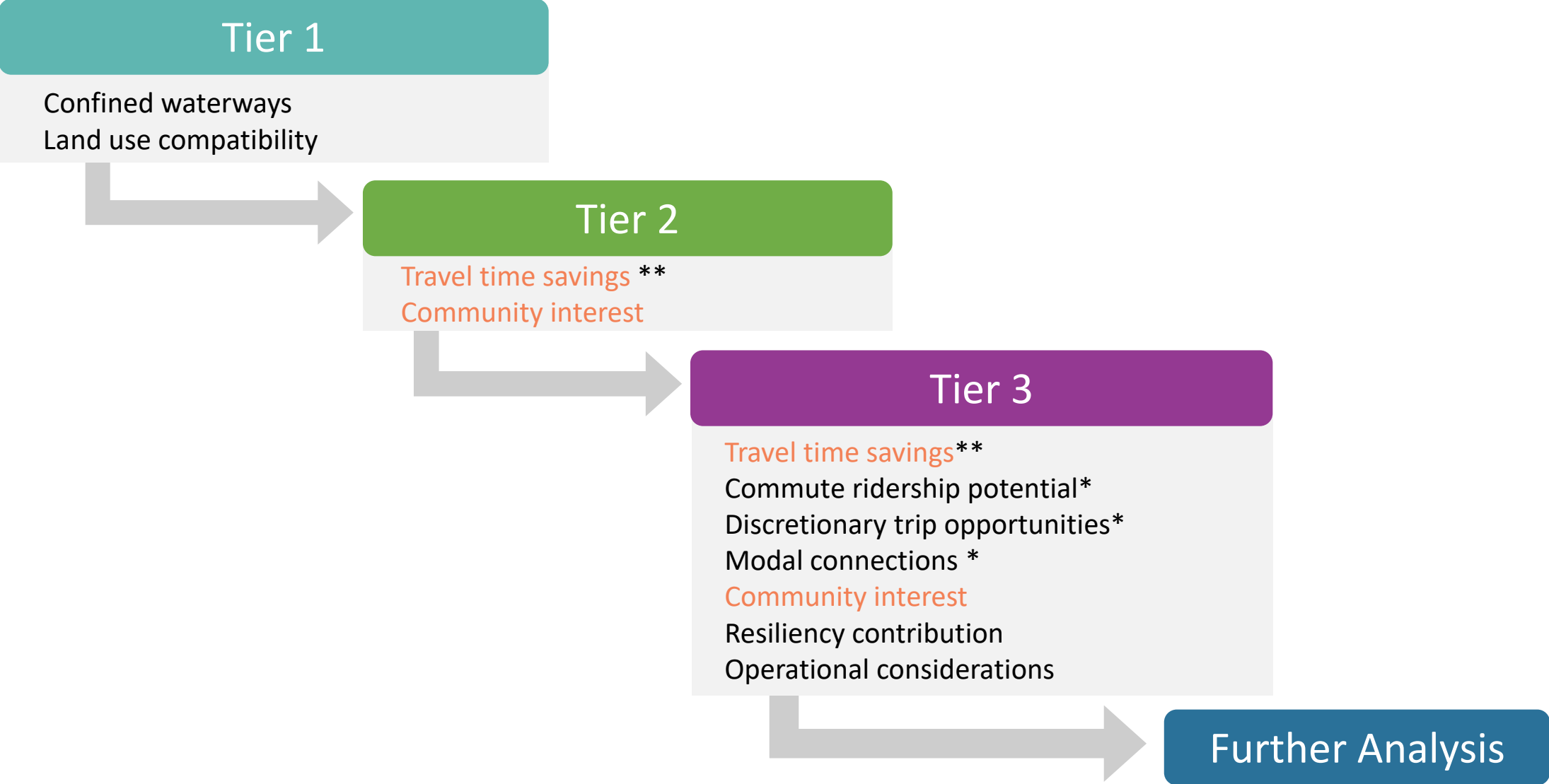
By RTPO Region and County

<b>RTPO Region</b>	<b>Top criteria</b>
Peninsula RTPO (Clallam, Jefferson, Mason)	Travel Time, Resiliency, Recreation, Quick Implementation
North Sound Regions (Whatcom, Skagit, Island, San Juan)	Recreation, Quick Implementation, Travel Time
PSRC (King, Kitsap, Pierce, Snohomish)	Travel Time, Ridership, Quick Implementation
Thurston County	Travel Time, Ridership, Multimodal Connections

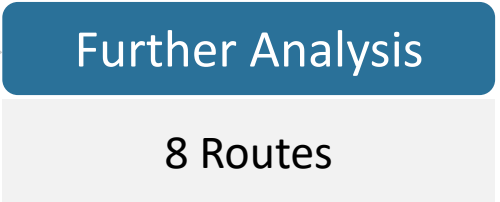
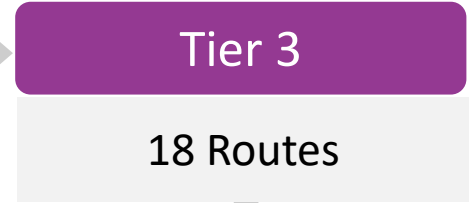
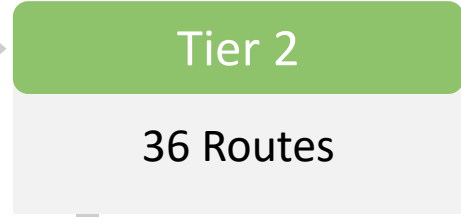
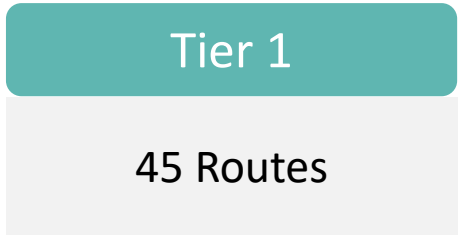


# Tiered Criteria Analysis

\*\* Indicates study-wide priority  
\* Indicates regional priority



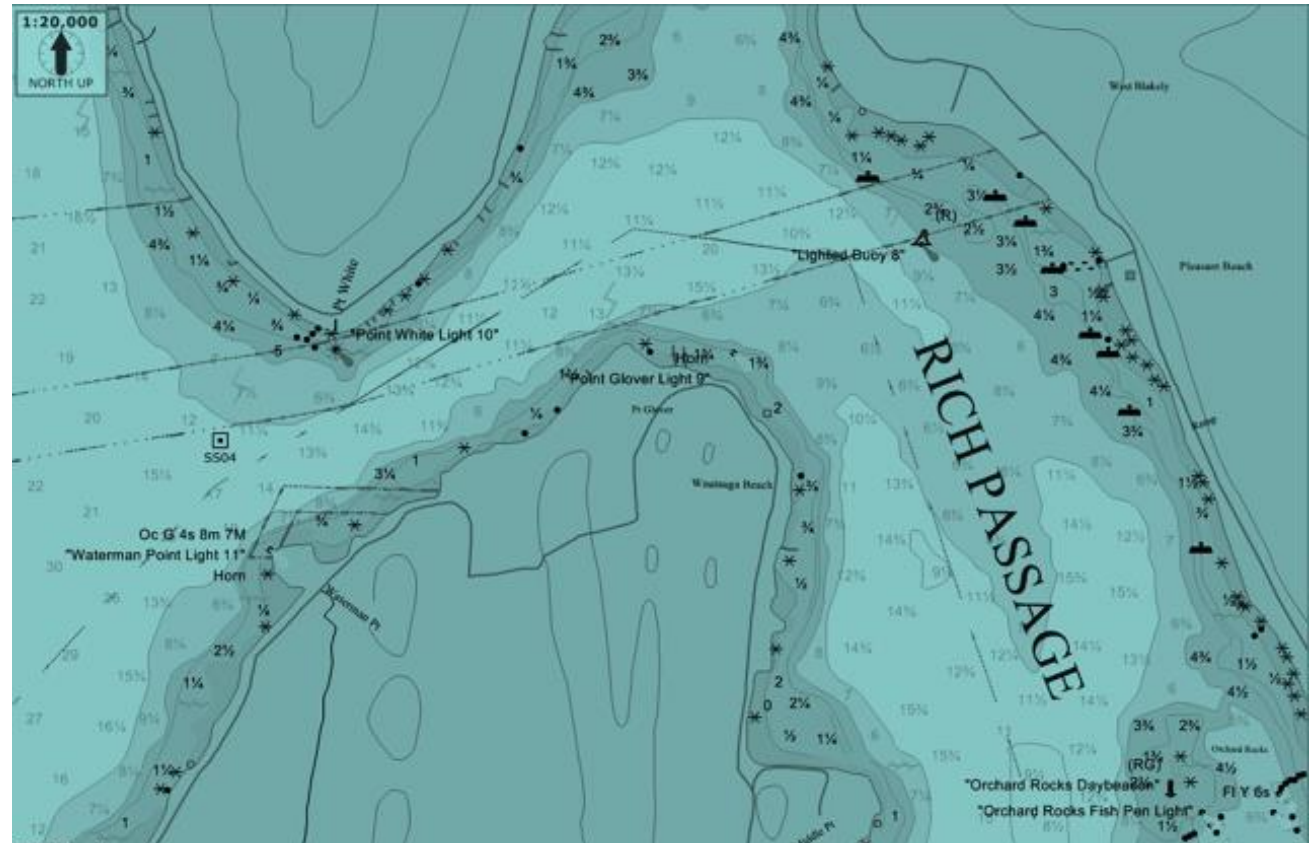
	Tier 1	Tier 2	Tier 3
North Sound (Whatcom, Skagit, Island, San Juan)	Anacortes - Des Moines	Anacortes - Des Moines	
	Bellingham - Everett	Bellingham - Everett	
	Bellingham - Friday Harbor	Bellingham - Friday Harbor	Bellingham - Friday Harbor
	Bellingham - Port Angeles	Bellingham - Port Angeles	
	Bellingham - Seattle (Downtown)	Bellingham - Seattle (Downtown)	
	Blaine - Friday Harbor	Blaine - Friday Harbor	
	Camano Island - Everett		
	Clinton/Langley- Everett	Clinton/Langley- Everett	Clinton/Langley- Everett
	Clinton/Langley- Kingston	Clinton/Langley- Kingston	
	Clinton/Langley- Seattle (Downtown)	Clinton/Langley- Seattle (Downtown)	Clinton/Langley- Seattle (Downtown)
	Clinton - Tacoma	Clinton - Tacoma	
	Coupeville - Camano Island		
	Coupeville - Clinton		
	Langley - Camano Island		
	Oak Harbor - Everett	Oak Harbor - Everett	
	Oak Harbor - Seattle (Downtown)	Oak Harbor - Seattle (Downtown)	
	Orcas Island - Bellingham	Orcas Island - Bellingham	Orcas Island - Bellingham
	Bainbridge Island - Des Moines	Bainbridge Island - Des Moines	
	Everett - Seattle (Downtown)	Everett - Seattle (Downtown)	Everett - Seattle (Downtown)
	PSRC (King, Kitsap, Pierce, Snohomish)	Fremont - Seattle (South Lake Union)	Fremont - Seattle (South Lake Union)
Gig Harbor- Seattle (Downtown)		Gig Harbor- Seattle (Downtown)	Gig Harbor- Seattle (Downtown)
Gig Harbor - Tacoma		Gig Harbor - Tacoma	
Kenmore - Seattle (University of WA)		Kenmore - Seattle (University of WA)	Kenmore - Seattle (University of WA)
Kirkland - Seattle (University of WA)		Kirkland - Seattle (University of WA)	Kirkland - Seattle (University of WA)
Port Orchard - Seattle			
Poulsbo - Seattle			
Renton - Seattle (University of WA)		Renton - Seattle (University of WA)	Renton - Seattle (University of WA)
Renton - Seattle (South Lake Union)		Renton - Seattle (South Lake Union)	Renton - Seattle (South Lake Union)
Seattle (Downtown) - Des Moines		Seattle (Downtown) - Des Moines	
Seattle (Shilshole) - Seattle (Downtown)		Seattle (Shilshole) - Seattle (Downtown)	Seattle (Shilshole) - Seattle (Downtown)
Silverdale - Bremerton			
Silverdale - Seattle			
Southworth - Des Moines		Southworth - Des Moines	Southworth - Des Moines
Steilacoom - Tacoma		Steilacoom - Tacoma	
Peninsula RTPO (Clallam, Jefferson, Mason)	Suquamish - Seattle (Downtown)	Suquamish - Seattle (Downtown)	Suquamish - Seattle (Downtown)
	Tacoma - Seattle (Downtown)	Tacoma - Seattle (Downtown)	Tacoma - Seattle (Downtown)
	Tacoma - Olympia	Tacoma - Olympia	
	Hoodsport - Port Angeles	Hoodsport - Port Angeles	
	Hoodsport - Port Townsend	Hoodsport - Port Townsend	
	Hoodsport - Seattle (Downtown)	Hoodsport - Seattle (Downtown)	
	Port Angeles - Seattle (Downtown)	Port Angeles - Seattle (Downtown)	Port Angeles - Seattle (Downtown)
	Port Townsend - Bellingham	Port Townsend - Bellingham	Port Townsend - Bellingham
	Port Townsend - Seattle (Downtown)	Port Townsend - Seattle (Downtown)	Port Townsend - Seattle (Downtown)
	Shelton - Seattle		
Thurston County	Olympia - Seattle (Downtown)	Olympia - Seattle (Downtown)	





# Tier 1 Analysis

- 12-County Destination Review
- Confined Waterways
- Land Use Compatibility



NOAA Navigational Chart for Rich Passage



# Tier 2 Analysis

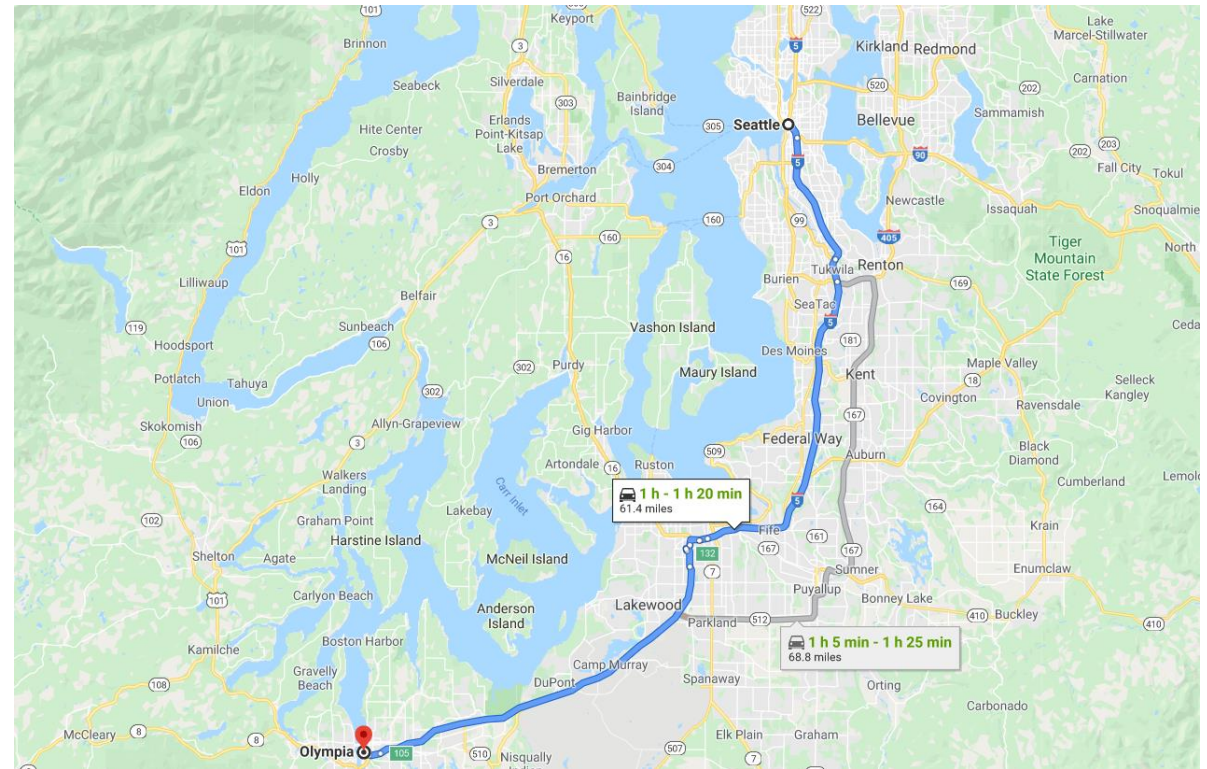
## ■ Travel Times Savings (within $\pm 10$ min.)

### Urban Routes

- Compare ferry to transit trip time.
- Transit trips in morning and evening commute period were averaged.

### Non-Urban Routes

- Compare ferry to car trip time.
- Car trips in morning and evening commute period were averaged.
- Traffic factor applied for trips along I-5 corridor south of Everett

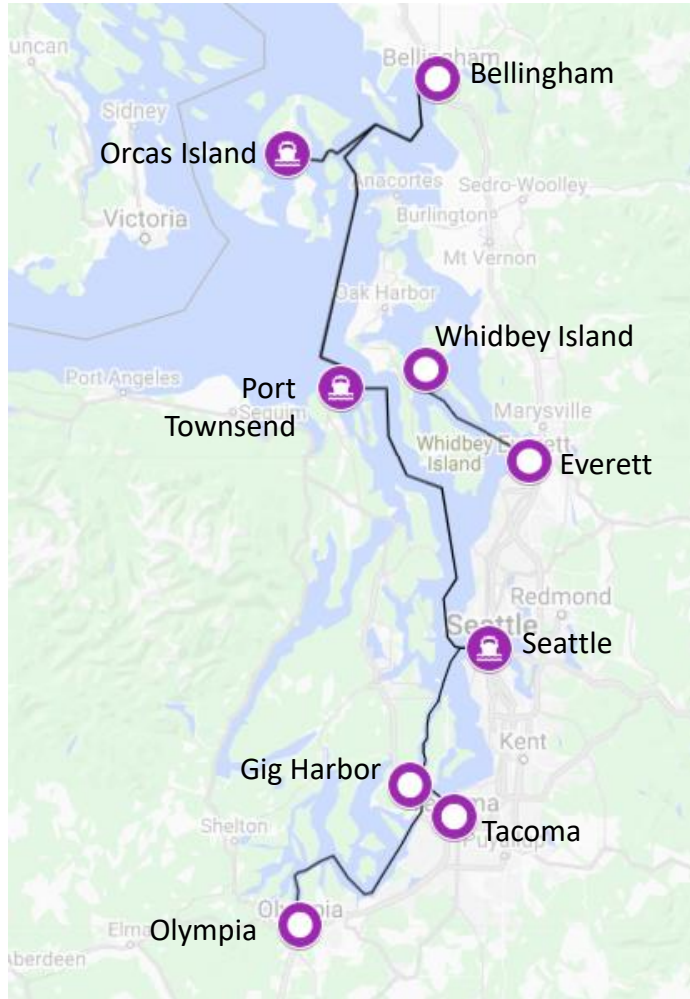


Olympia/Seattle Drive Time Example



# Tier 2 Analysis

## Added Routes



## Community Interest

### Methodology

1. Sort responses by county.
2. Calculate the percentage of county responses that refer to a suggested route.
3. Add routes that were suggested in **at least 10%** of a county's responses.

## Additional Considerations

### Methodology

1. Potential commuters served of over 50,000
2. Significant development since 2015
3. Resiliency opportunities



# Routes Evaluated by Tier 3 Analysis

## Commuter Routes

### Puget Sound Routes

- Tacoma/Seattle
- Suquamish/Seattle
- Gig Harbor/Seattle
- Whidbey Island/Everett
- Shilshole/Seattle
- Everett/Seattle
- Langley/Seattle

### Lake Routes

- Kirkland/UW
- Kenmore/UW
- Renton/SLU
- Renton/UW
- Fremont/SLU

## Recreational / Discretionary Routes

- Bellingham/Friday Harbor
- Port Townsend/Seattle
- Port Angeles/Seattle
- Orcas Island/Bellingham
- Port Townsend/Bellingham

### Airport Route

- Southworth/Des Moines

**18 TOTAL ROUTES**



# Tier 3 Analysis Criteria

**Travel Time Savings**

**Ridership Potential**

**Discretionary Trip Opportunities**

**Modal Connections**

**Community Interest**

**Resiliency Contribution**

**Operational Considerations**

## Criteria Metrics

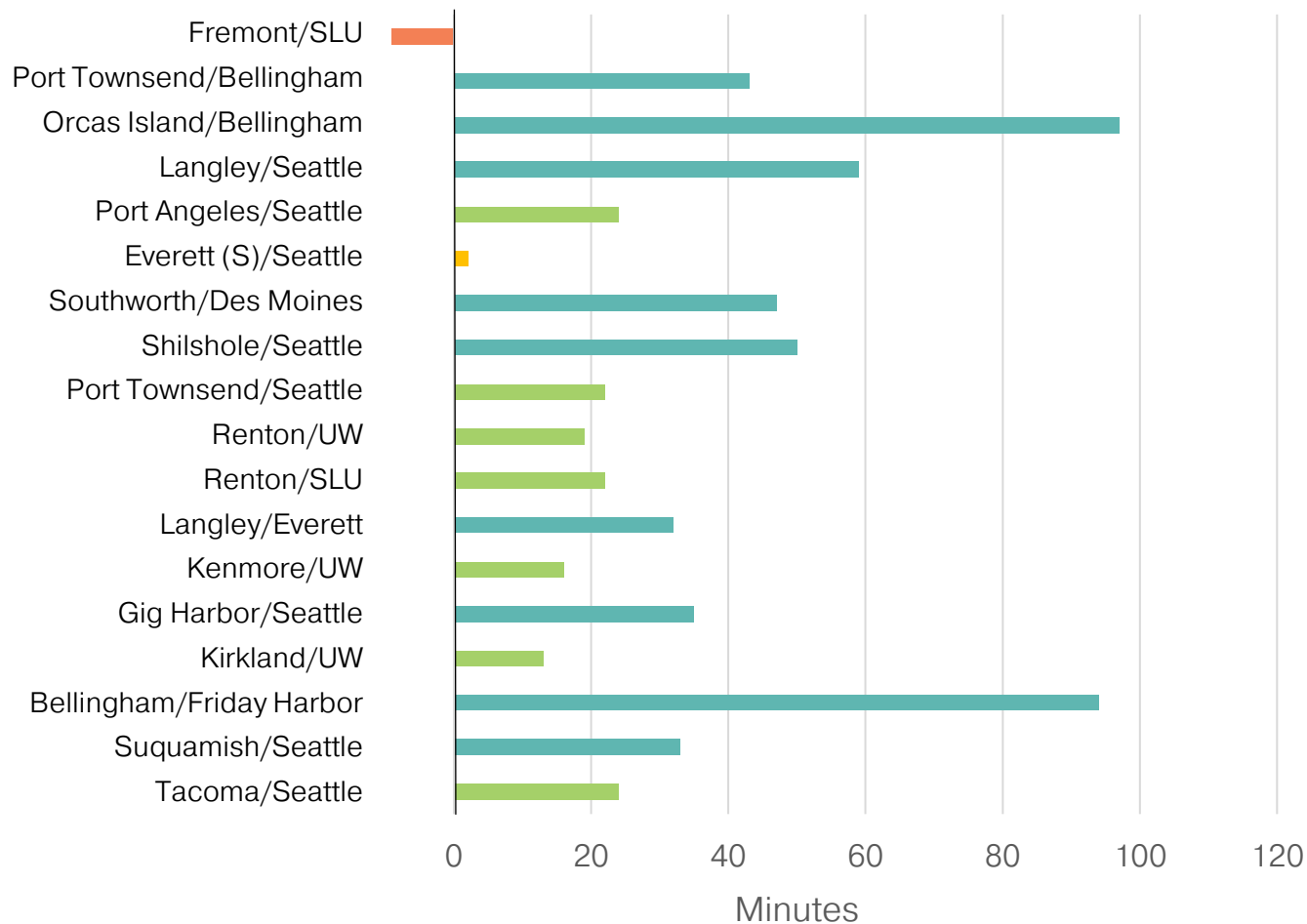
1. Travel Time Savings
2. Existing Commuter Demand
3. Potential Commuter Demand
4. Relative Recreational/Discretionary Potential
5. Origin Relative Modal Connection Distance
6. Modal Connections Quality
7. Geographic Range of Support
8. Route Implementation in Plans/Recent Studies
9. Essential Trips, Bridge/Ferry Dependency
10. Seaworthiness

Total score was added and ranked



# Tier 3 Analysis Criteria Cont.

## POF Travel Time Savings vs. Other Modes



*Travel Time Savings of POF Compared to Other Modes*

## TRAVEL TIME SAVINGS

1. Travel Time Savings (POF vs comparable mode)

## RIDERSHIP POTENTIAL

2. Existing Commuter Demand
3. Potential Commuter Demand
4. Relative Recreational/  
Discretionary Potential



# Tier 3 Analysis Criteria Cont.

## Commute Routes

### Urban Terminals

Main Metric: **Transit**

- Distance: **Walking distance**
- Quality: **# of modes, # of destinations**

### Non-Urban Terminals

Main Metric: **Parking**

- Distance: **Walking distance**
- Quality: **Quantity of parking**

## Recreational / Discretionary Routes

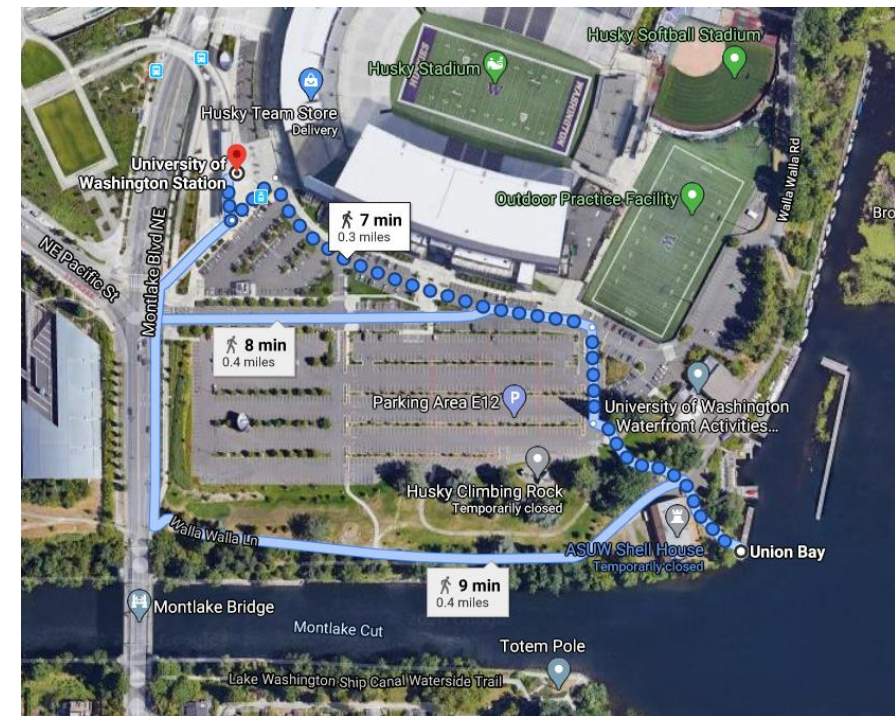
### Urban & Non-Urban Terminals

Distance: **Walking distance to transit or parking**

Quality: **Walk Score at Destination**

## MODAL CONNECTIONS

5. Origin Relative Modal Connection Distance
6. Modal Connections Quality



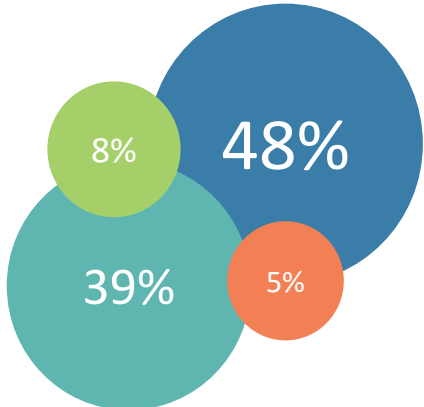
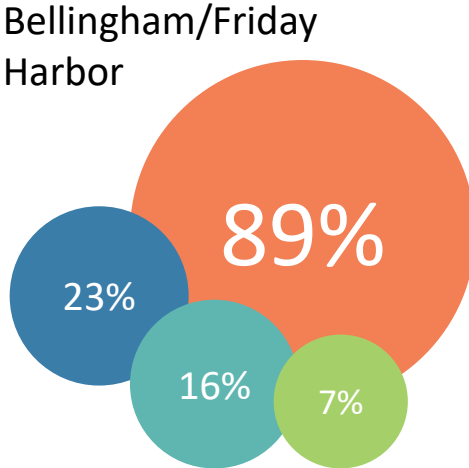
Example Walking Distance Calculation [Google Maps]



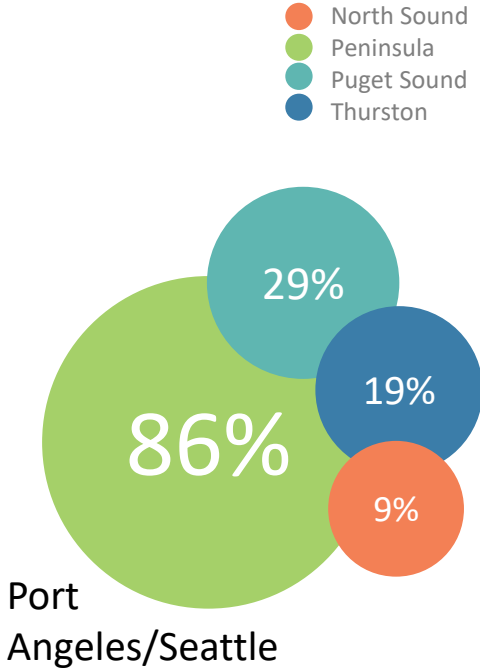
# Tier 3 Analysis Criteria Cont.

## COMMUNITY INTEREST

- 7. Geographic Range of Support
- 8. Route Implementation in Plans/Recent Studies



Tacoma/Seattle



Example Routes And Their Support By RTPO Region





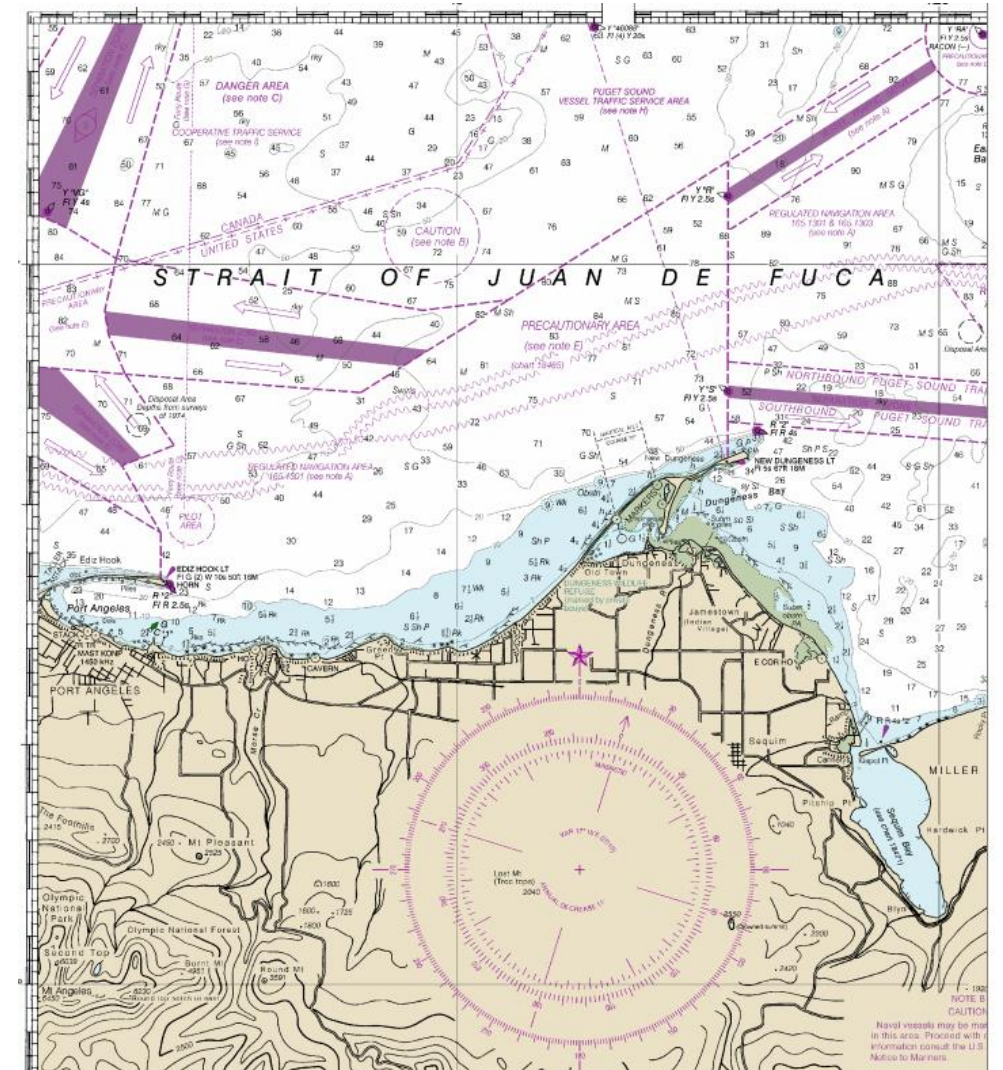
# Tier 3 Analysis Criteria Cont.

## RESILIENCY CONTRIBUTION

9. Essential Trips, Bridge/Ferry Dependency

## OPERATIONAL CONSIDERATIONS

10. Seaworthiness



NOAA Navigational Chart for the Strait of Juan De Fuca near Port Angeles

# Routes Evaluated by Tier 3 Analysis

1. Tacoma/Seattle
2. Suquamish/Seattle\*
3. Bellingham/Friday Harbor
4. Kirkland/UW
5. Gig Harbor/Seattle
6. Kenmore/UW
7. South Whidbey/Everett\*
8. Renton/SLU
9. Renton/UW
10. Shilshole/Seattle
11. Port Townsend/Seattle
12. Southworth/Des Moines
13. Everett/Seattle
14. Port Angeles/Seattle
15. South Whidbey/Seattle
16. Orcas Island/Bellingham
17. Port Townsend/Bellingham
18. Fremont/SLU

\*Alternate Route Option



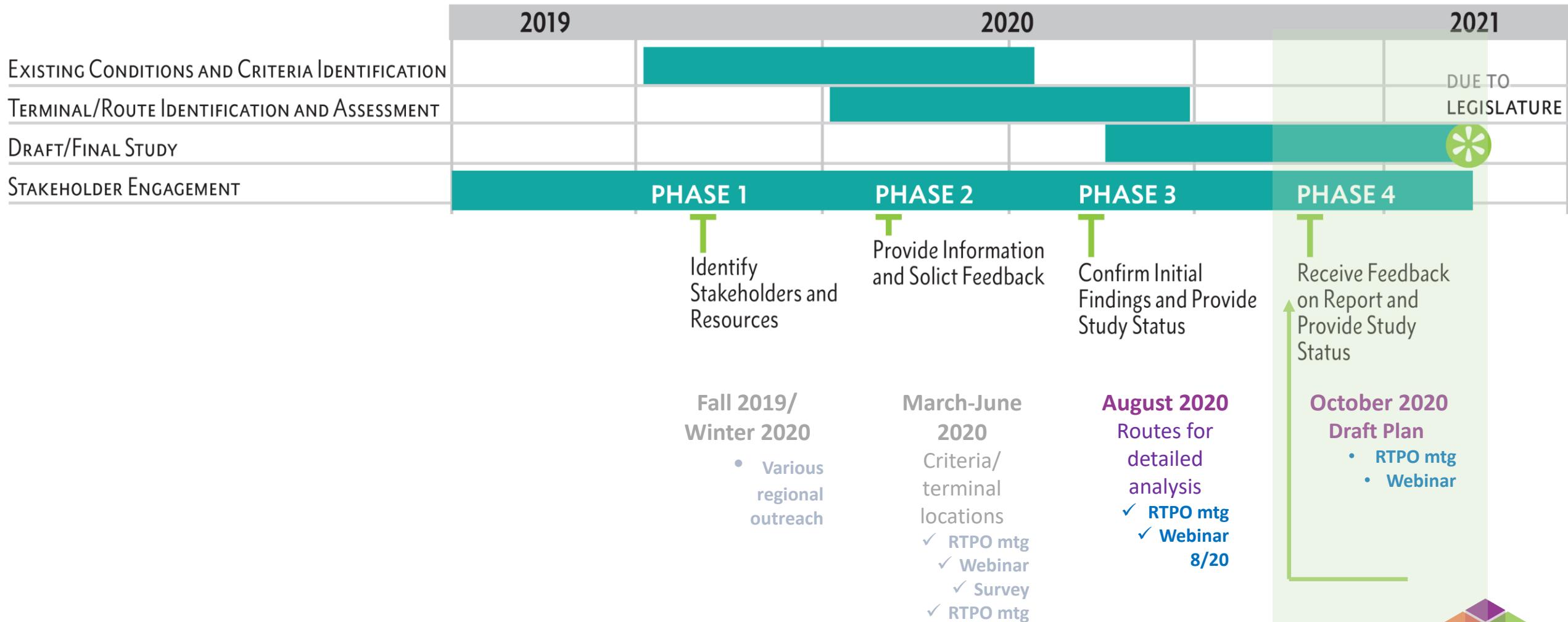
# Structure for Further Analysis

Route	Route Type	Analysis
Bellingham/Friday Harbor	Recreational/Discretionary	New Route Profile
Kirkland/UW	Commute- Lake	Refresh of Existing Studies; Joint Profile
Kenmore/UW	Commute- Lake	
Renton/UW	Commute- Lake	
Renton/SLU	Commute- Lake	
Tacoma/Seattle	Commute	Refresh Existing Study
Gig Harbor/Seattle	Commute	New Route Profile
* <i>Suquamish/Seattle</i>	<i>Commute</i>	<i>New Route Profile</i>
* <i>South Whidbey/Everett</i>	<i>Commute</i>	<i>New Route Profile</i>

*\*Alternate, only one to be analyzed.*



# Next Steps—



# Questions and For More Information

Please visit:

<https://www.psrc.org/our-work/puget-sound-passenger-only-ferry-study-underway>

Your input will strengthen this study.

Please keep in touch through our listserv and the project website.

Please contact [POF\\_Study@psrc.org](mailto:POF_Study@psrc.org) to be added to the project stakeholder email list.



An aerial photograph of a coastal city, likely Seattle, Washington. The foreground shows a large body of water with a ferry boat moving across it. The middle ground is dominated by a large industrial shipyard with several large ships and cranes. The background features a dense residential area and a range of snow-capped mountains under a clear blue sky.

# Thank you.

**Gil Cerise, AICP**  
GCerise@psrc.org

**Kristen Kissinger, AICP**  
KPFF Consulting Engineers

