



**In-Kind Match Valuation Proposal**

In-Kind Match: Volunteer Driver Hours – 3,755  
Value of Volunteer Hour: \$24.88\*  
(3,755 Volunteer Hours @ \$24.88= \$93,424.40)  
Total In-Kind Value for Volunteer Driver Match: \$93,424.40

\*The value of the volunteer hour of service is based on the Employment Security Department's 2017 occupational-employment wage estimates (\$19.90) multiplied by 125% to reflect benefit equivalent offered by Catholic Community Services for employees. The average wage data utilized was for the occupation "Bus Drivers, School and Special Client" for Seattle-Bellevue-Everett region.



September 5, 2018

Bill Hallerman, Agency Director  
Catholic Community Services  
100 23rd Avenue South  
Seattle, WA 98144

Dear Bill Hallerman:

Hopelink supports Catholic Community Services' grant application, *Continue to Preserve Volunteer Services King County Volunteer Transportation Program*. Hopelink serves as the staff support for the King County Mobility Coalition and Travel Programs efforts, which Catholic Community Services serves as a strong partner. This project reinforces Hopelink's mission to support self-sufficiency for all members of our community.

The *Continue to Preserve Volunteer Services King County Volunteer Transportation Program* project will continue to maintain the current level of transportation options to seniors and persons with disabilities who cannot afford ridesharing options or are unable to use fixed route transit.

Volunteer transportation is a cost-effective transportation alternative that complements other transportation modes. The program focuses on serving those living on fixed incomes who may not qualify for other services or live outside of fixed transportation routes, particularly those living in King County communities with fewer transportation options. CCS has been an important stakeholder in our work, and we thank them for continuing to work with us to improve mobility for all.

The transportation provided by Catholic Community Services is essential to maintaining quality of life and self-sufficiency for older adults, persons with disabilities, and individuals with low income. Thank you for considering my comments regarding Catholic Community Services' application. Should you have any questions, please feel free to contact Staci Haber, Mobility Manager, at 425-943-6769.

Sincerely,



Francois Larrivee  
VP of Transportation  
Hopelink

TRANSPORTATION  
14812 Main Street  
Bellevue, WA 98007-5245

425.943.6789  
fax 425.644.9956

[www.hope-link.org](http://www.hope-link.org)

A community action agency.

Hopelink programs  
Emergency Services  
Bellevue  
Redmond  
Kirkland/Northshore  
Sno-Valley  
Shoreline  
Family Development  
Housing  
Transportation  
Adult Education

King County  
**MOBILITY COALITION**

---

Bill Hallerman, Agency Director  
Catholic Community Services  
100 23<sup>rd</sup> Avenue South  
Seattle, WA 98144

Dear Bill Hallerman:

The King County Mobility Coalition supports Catholic Community Services' grant application, *Continue to Preserve Volunteer Services King County Volunteer Transportation Program*. We are pleased to have been of assistance in evaluating the need for this project. Catholic Community Services is a member of the King County Mobility Coalition, and we commend them for their long time commitment to special needs transportation coordination in King County.

The Continue to Preserve Volunteer Services King County Volunteer Transportation Program project is consistent with the needs identified in our local Coordinated Transit-Human Services Transportation Plan. Furthermore, this project supports the King County Mobility Coalition's vision of a coordinated transportation network that allows all people to move freely around King County and the Puget Sound region by providing volunteer transportation as an option for vulnerable elders and individuals with disabilities.

Volunteer transportation is a cost-effective transportation alternative that complements other transportation modes. The program focuses on serving those living on fixed incomes who may not qualify for other services or live outside of fixed transportation routes, particularly those living in King County communities with fewer transportation options. CCS has been an important stakeholder in our work, and we thank them for continuing to work with us to improve mobility for all.

Thank you for considering our comments regarding Catholic Community Services' application. Should you have any questions, please feel free to contact Staci Haber at 425-943-6769.

Sincerely,

  
Alex O'Reilly  
Coalition Co-Chair

  
Don Okazaki  
Coalition Co-Chair

  
Staci Haber  
Mobility Manager

July 25, 2018

Bill Hallerman, Agency Director  
Catholic Community Services  
100 23<sup>rd</sup> Avenue South  
Seattle, WA 98144

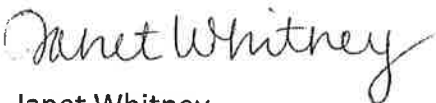
I represent the Greater Maple Valley Community Center (GMVCC) Senior Program and am writing to express my strong support for Catholic Community Services grant application, Continue to Preserve Volunteer Services King County Transportation Program.

We serve participants from Maple Valley, Covington, Ravensdale, Hobart, Black Diamond and Renton. Volunteer Chore Services are essential in this region as access to other transportation resources are extremely limited for many, and non-existent for others. Volunteer drivers assist with transportation to medical appointments and other health related errands.

Many of the frail and chronically ill individuals served by VCS and GMVCC require our transportation services to live independently. Volunteers find it rewarding to assist fellow community members as they strive to stay healthy and continue to live in their own homes. Between January 1<sup>st</sup> to June 30<sup>th</sup> of this year, our volunteers have logged 140.75 hours and driven 1,769 miles!

Thank you for your consideration of supporting transportation services for elders in the Greater Maple Valley region. If you need additional information, please don't hesitate to contact me.

Sincerely,



Janet Whitney  
Director of Health and Wellness



**Matching Funds Documentation**

**Secured Funds:**

**City of Kent**

2019/2020 amount: \$11,000 (Recommended by Human Services Commission; pending approval by Kent City Council in November 2018)

**City of Bellevue**

2019/2020 amount: \$16,000 (Approved by Bellevue City Council September 5<sup>th</sup> 2018)

**Total Funds Secured: \$27,000**

Volunteer Services has received funds from Bellevue since 1999 and from Kent since 2009.



# City of Bellevue Funding Recommendations

App #	Agency Name	Program Name	2018 Awarded	2019 Requested	2019 HSC Recomm.	2020 HSC Recomm. (3.63% COLA)	2019 CDBG Public Svc.	HSC Rationale
<b>Goal #2 - Supportive Relationships Within Families, Neighborhoods &amp; Communities</b>								
36	Alpha Supported Living Services	Alpha Health Services Program	\$0	\$7,000	\$0	\$0		The HSC does not recommend funding this request because of the limited number of Bellevue residents served.
37	Asian Counseling and Referral Service	Children, Youth and Families Program	\$70,912	\$110,552	\$73,408	\$76,073		Provides bilingual/bicultural mental health services for low income AAPI youth and their families in Bellevue and Kent. Youth Prevention Program provides bilingual/bicultural prevention and intervention services related to dating violence/sexual assault and healthy relationships for young women at Interlake, Sammamish and Newport High Schools. Provided 327 hours of counseling and 222 hours of youth services in 2017. The HSC recommends partial funding of their request.
38	Assistance League of the Eastside	Operation School Bell	\$12,911	\$13,000	\$13,000	\$13,472		Each year, volunteers organize local shopping events for 4000 children in need, selected by school personnel, from the Lake Washington, Bellevue and Northshore School Districts in grades K-12. The HSC recommends full funding of their request.
39	Athletes For Kids	AFK Youth Mentoring	\$0	\$10,000	\$0	\$0		The HSC does not recommend funding this program because another mentoring program is funded.
40	Bellevue School District	Human Services	\$69,325	\$95,000	\$71,765	\$74,370		Operates 15 Family Connections Centers (FCC) housed in schools throughout the community. The FCC is a connector to community agencies and resources by providing goods, services, information and referrals, and supports families in navigating the school system. The HSC recommends partial funding of their request.
41	Catholic Community Services of King County	Volunteer Services	\$14,977	\$16,000	\$16,000	\$16,581		Provides volunteer assistance with household chores such as cleaning, laundry, grocery shopping, transportation, yard work, minor home repair, and moving assistance to elders and adults with disabilities to help them remain living independently in their own home. Provided 1,897 hours of volunteer service in 2017. The HSC recommends full funding of their request.
42	Chinese Information and Service Center	Eastside Cultural Navigator Program	\$68,322	\$75,000	\$70,727	\$73,294		The Cultural Navigator Program helps immigrants integrate into their new community by providing information, referrals and guidance in the client's language and offering the friendly, human touch people need in a new environment. Provided 6,049 15-minute increments of referral time spent with clients in 2017. The HSC recommends partial funding of their request.
43	Chinese Information and Service Center	Eastside Russian Senior Program	\$0	\$15,597	\$8,000	\$8,290		The Eastside Russian Senior Program will connect isolated Russian seniors to: 1) healthy activities, 2) a group of their peers that they might not have known, 3) culturally and linguistically appropriate programming, and 4) connections and referrals to community resources and programs. The HSC recommends partial funding of their request.
44	Crisis Clinic	King County 2-1-1	\$28,715	\$31,586	\$28,715	\$29,757		Provides people with information & referral to services that can help them regain or maintain their financial stability and lead a productive life. Fielded 2,509 calls in 2017. The HSC recommends partial funding of their request.
45	Eastside Legal Assistance Program	Eastside Legal Assistance Program	\$29,324	\$50,000	\$49,710	\$51,514		Provides legal services through 1) clinics where clients receive consultations with volunteer attorneys; 2) consultations for DV survivors with DV attorneys; 3) representation by volunteer attorney if needed; 4) the Wills Project where volunteer attorneys draft simple wills. Provided 252 sessions of legal consultation, 42 sessions of legal assistance, and 242 referrals/presentations in 2017. The HSC recommends partial funding of their request.

August 3, 2018

Catholic Community Services of King County  
Bill Hallerman  
100 23rd Ave S  
Seattle, WA 98144

Dear Bill Hallerman:

---

The Human Services Commission has completed its review of the Human Services General Fund and Community Development Block Grant (CDBG) Public Service Applications for 2019-2020. We are pleased to inform you that the Commission has recommended yearly funding from the City of Kent for the following programs:

**Emergency Assistance Program: \$10,000**  
**HOME and WHOME Program: \$65,000**  
**Kathrine's and Rita's House: \$13,000**  
**Kent Community Engagement Center: \$30,000**  
**Volunteer Services Program: \$11,000**

The City estimates Human Services General Fund and CDBG Public Service dollars in the amount of \$1,182,000 will be available for human services programs in 2019. Ninety-nine applications were submitted to the Commission for consideration with a total request of nearly \$2,600,000. Of the ninety-nine funding requests, approximately fifty-four programs are being recommended for funding from the General Fund and CDBG dollars.

The Commission based its funding decisions on the following: community need, emerging needs that were previously unfunded or underfunded, quality of the proposal, applicability to the Kent Human Services Master Plan, prior performance, presence and partnership in our community, and cost-effectiveness and efficiency of the proposed program. In addition, the Commission strives to balance funding among the six Human Service Master Plan Priority areas in order to ensure that a continuum of services is available to our residents.

The recommendations are included as part of the budget package. The City Council will vote on the budget in November 2018. Please note that the funding

recommendations are considered tentative until Council approves the budget. Human Services funding contracts are two-year contracts. The second year of funding (2020) is contingent upon the agency successfully meeting contractual requirements and continued availability of funding.

If you have questions, please contact me at (253) 856-5070. It is appropriate at this point in the funding process to raise questions with and provide comments to Human Services staff rather than Commission members.

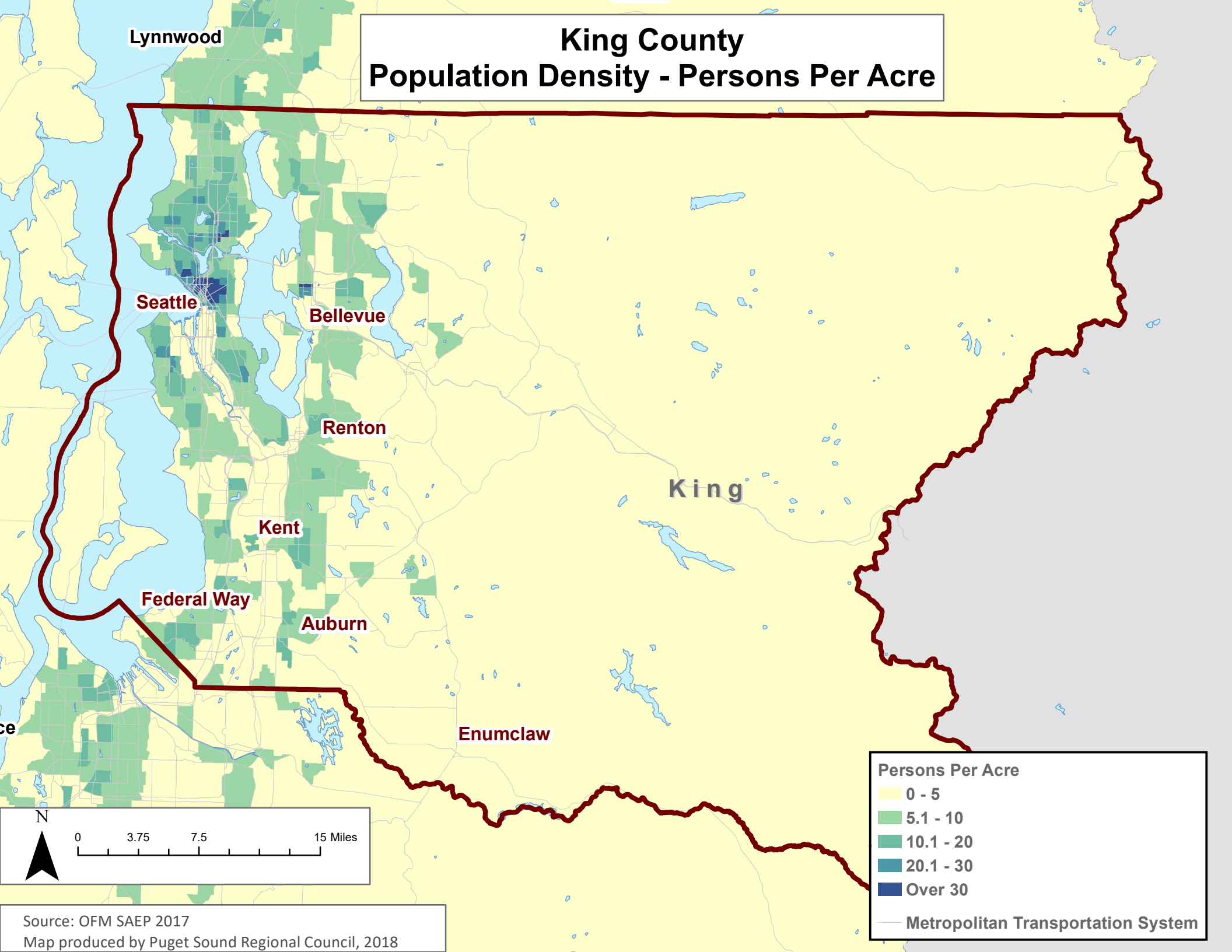
Sincerely,

---

Merina Hanson  
Housing and Human Services Manager

Cc: Dinah Wilson, CDBG Coordinator  
Lori Guilfoyle, Coordinator  
Christine Cain, Coordinator  
2019-2020 Funding Application File

# King County Population Density - Persons Per Acre



Lynnwood

Seattle

Bellevue

Renton

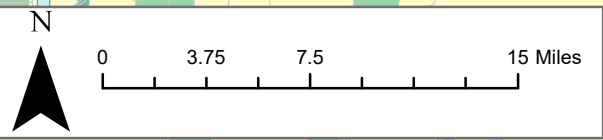
Kent

Federal Way

Auburn

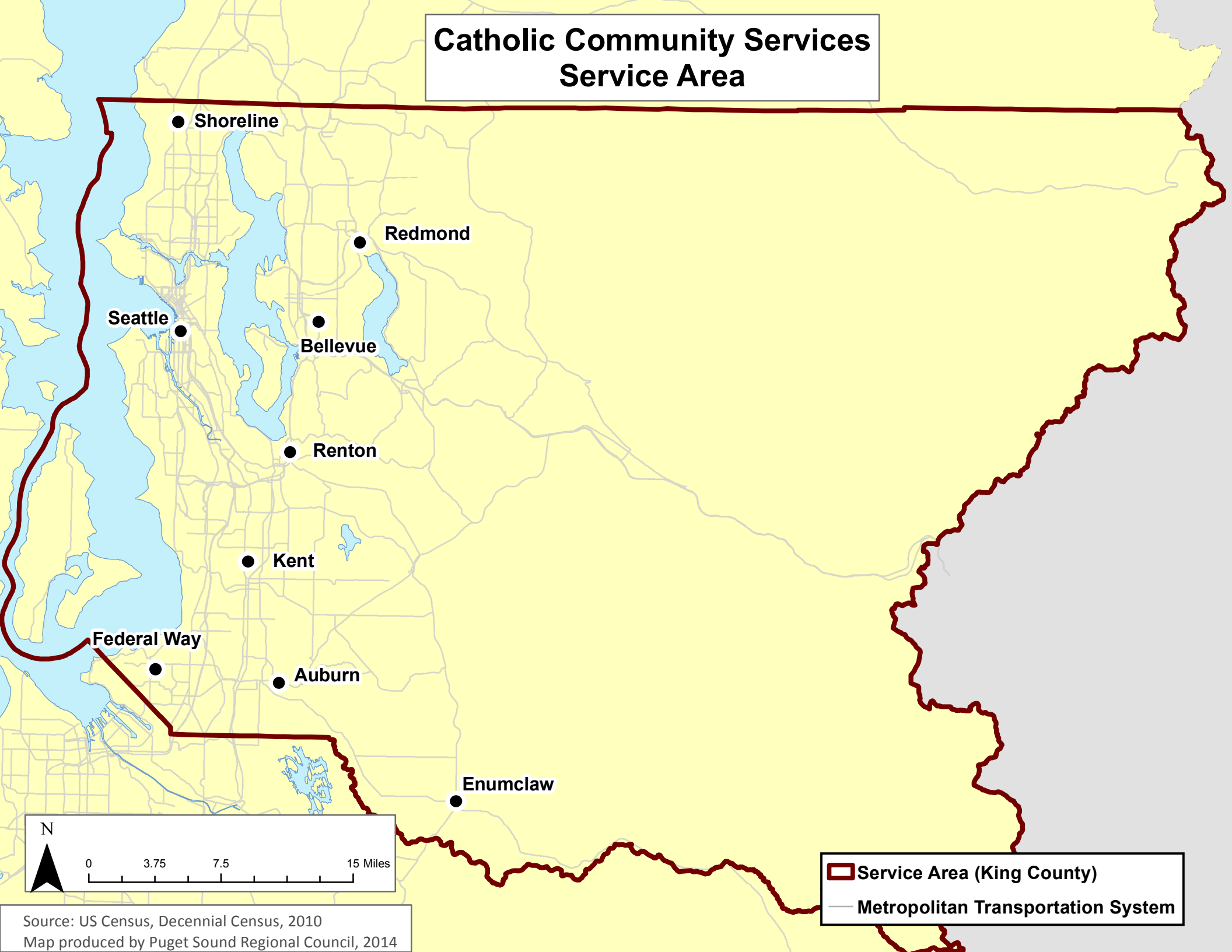
Enumclaw

King



Source: OFM SAEP 2017  
Map produced by Puget Sound Regional Council, 2018

# Catholic Community Services Service Area



Seattle

Shoreline

Redmond

Bellevue

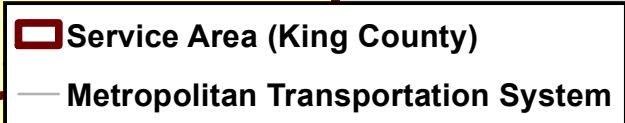
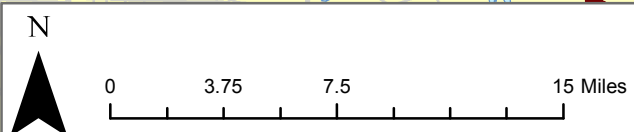
Renton

Kent

Federal Way

Auburn

Enumclaw



Source: US Census, Decennial Census, 2010  
Map produced by Puget Sound Regional Council, 2014