

RECEIVED OCT 02 2017

INTERNAL REVENUE SERVICE
P. O. BOX 2508
CINCINNATI, OH 45201

DEPARTMENT OF THE TREASURY

Date: SEP 22 2017

NORTHSHORE SENIOR CENTER
10201 E RIVERSIDE DR
BOTHELL, WA 98011

Employer Identification Number:
91-1184432
DLN:
17053142321037
Contact Person:
DEL TRIMBLE ID# 31309
Contact Telephone Number:
(877) 829-5500
Accounting Period Ending:
December 31
Public Charity Status:
170(b)(1)(A)(vi)
Form 990/990-EZ/990-N Required:
Yes
Effective Date of Exemption:
January 1, 2016
Contribution Deductibility:
Yes
Addendum Applies:
No

Dear Applicant:

We're pleased to tell you we determined you're exempt from federal income tax under Internal Revenue Code (IRC) Section 501(c)(3). Donors can deduct contributions they make to you under IRC Section 170. You're also qualified to receive tax deductible bequests, devises, transfers or gifts under Section 2055, 2106, or 2522. This letter could help resolve questions on your exempt status. Please keep it for your records.

Organizations exempt under IRC Section 501(c)(3) are further classified as either public charities or private foundations. We determined you're a public charity under the IRC Section listed at the top of this letter.

Our records show you were previously tax exempt as a subordinate under group exemption number 8026. Because you applied for and were granted your own individual tax-exempt status, you no longer rely on your affiliation with a parent organization for recognition of your tax exemption and you'll be listed individually in the Exempt Organizations Select Check (Pub. 78 data).

If, in the future, you choose to become a subordinate under a group ruling, you'll lose your individual recognition of tax-exempt status and you'll no longer appear in the Exempt Organizations Select Check (Pub. 78 data). Moreover, if you become a subordinate under a group ruling and your parent organization loses its tax-exempt status, you also will lose your exempt status. To reestablish your individual tax exemption after rejoining a group exemption, you'll be required to reapply and pay the appropriate user fee.

If we indicated at the top of this letter that you're required to file Form 990/990-EZ/990-N, our records show you're required to file an annual

Letter 947

NORTHSHORE SENIOR CENTER

information return (Form 990 or Form 990-EZ) or electronic notice (Form 990-N, the e-Postcard). If you don't file a required return or notice for three consecutive years, your exempt status will be automatically revoked.

If we indicated at the top of this letter that an addendum applies, the enclosed addendum is an integral part of this letter.

For important information about your responsibilities as a tax-exempt organization, go to www.irs.gov/charities. Enter "4221-PC" in the search bar to view Publication 4221-PC, Compliance Guide for 501(c)(3) Public Charities, which describes your recordkeeping, reporting, and disclosure requirements.

We sent a copy of this letter to your representative as indicated in your power of attorney.

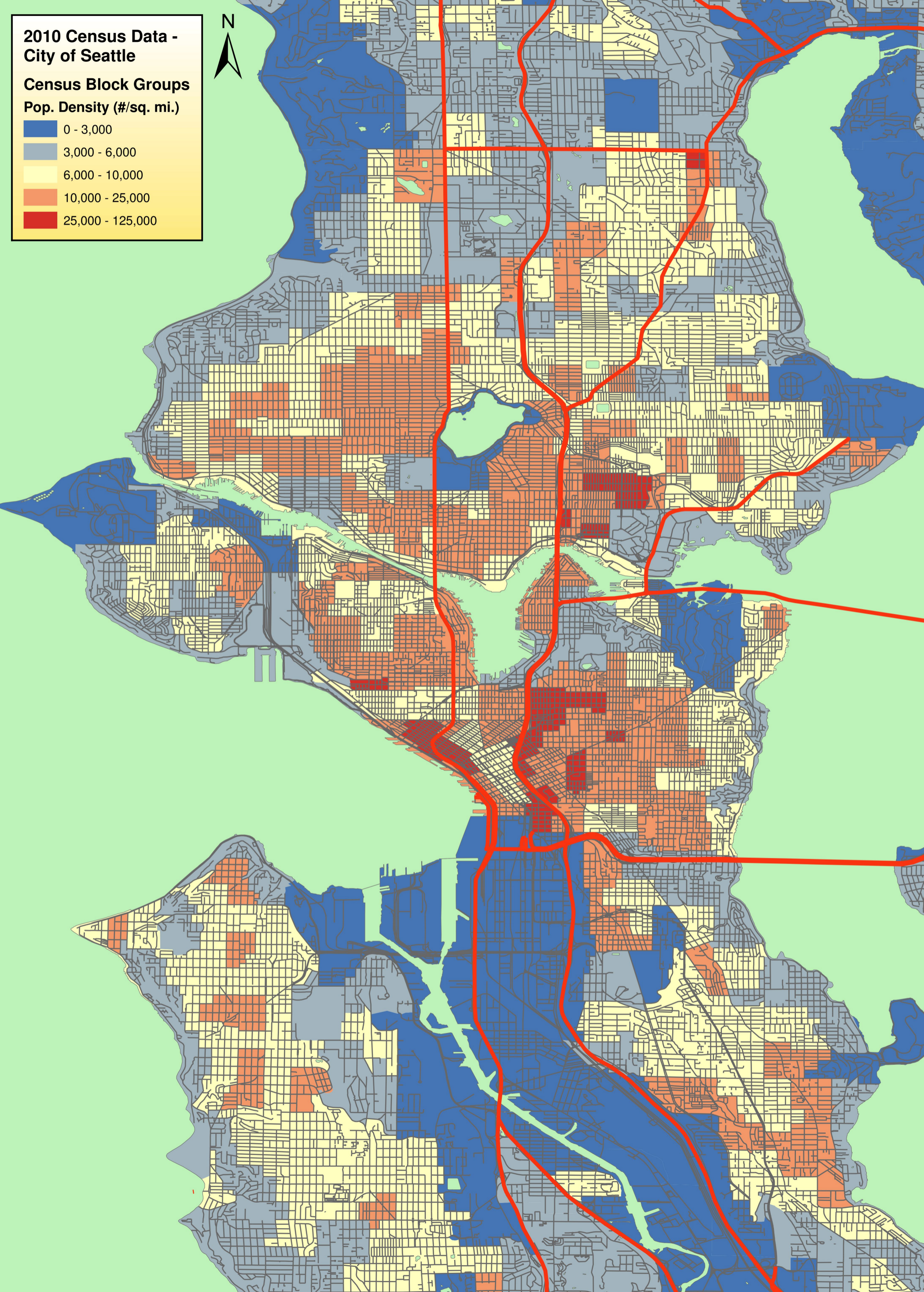
Sincerely,

A handwritten signature in cursive script that reads "Stephen A. Martin".

Director, Exempt Organizations
Rulings and Agreements

**2010 Census Data -
City of Seattle**

**Census Block Groups
Pop. Density (#/sq. mi.)**



King County Accessible Travel Map

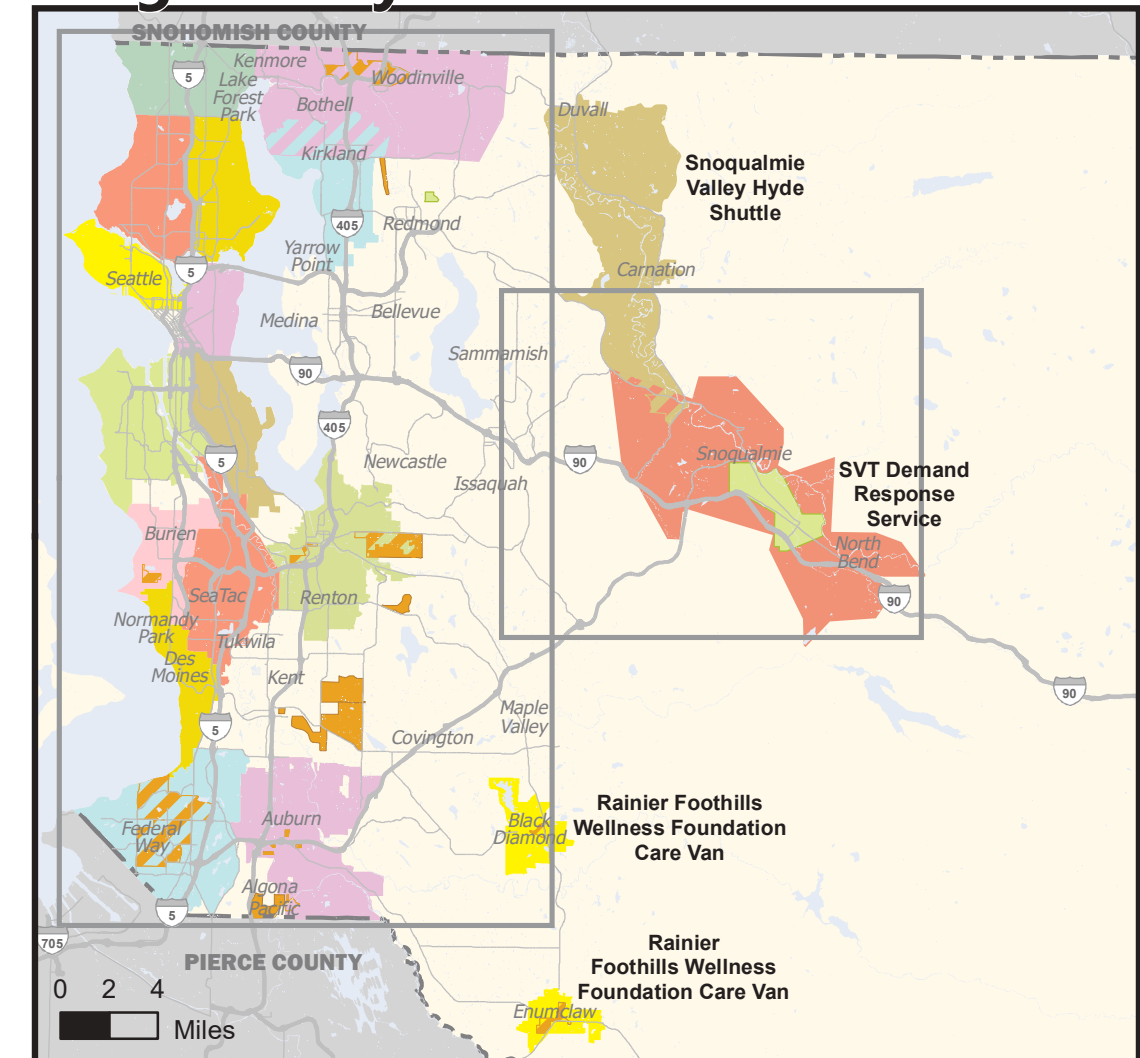
Local bus routes are not shown. See reverse side for additional details regarding service areas and accessibility features.

Updated Summer 2016

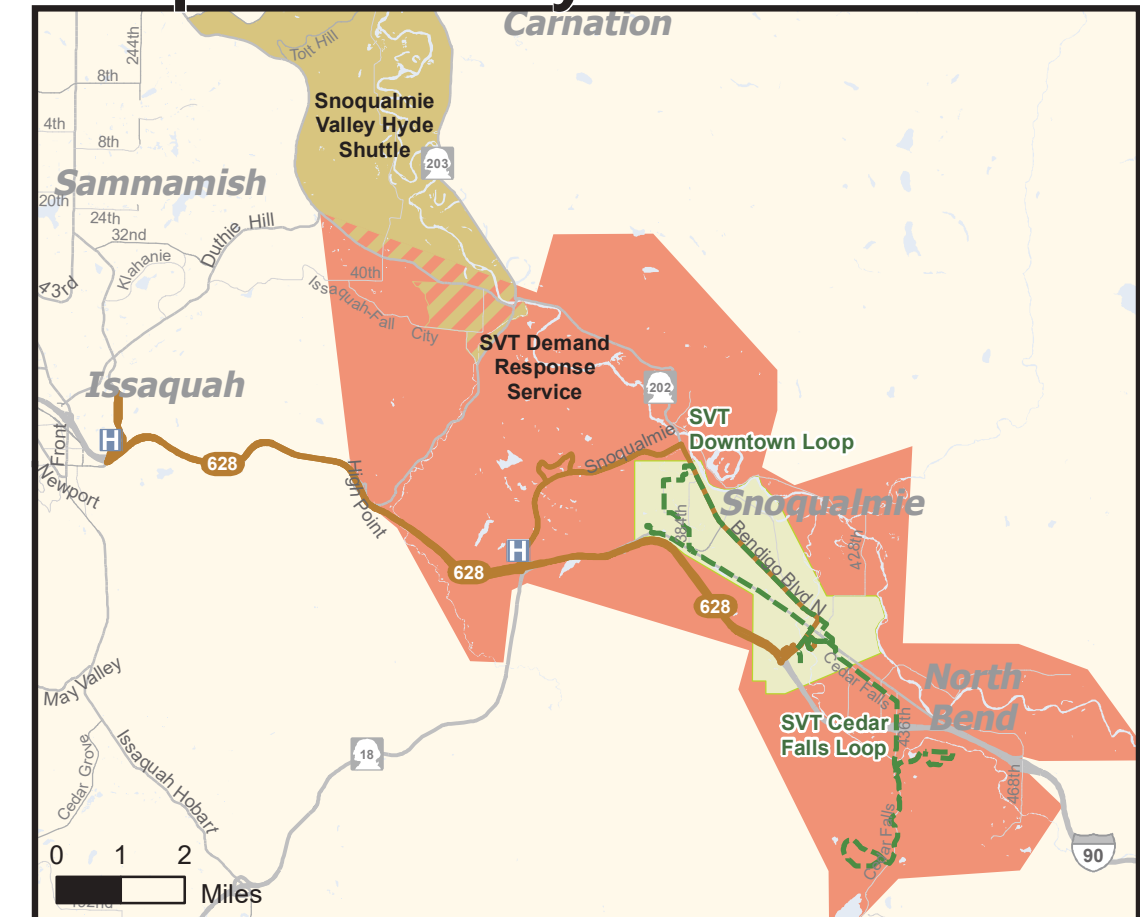


- UW Health Science Express Stops
- Hospital
- Transit Center
- RapidRide
- Link Light Rail
- Seattle Street Car
- Demand Area Response Transit (DART) Route
- Demand Area Response Transit (DART) Area

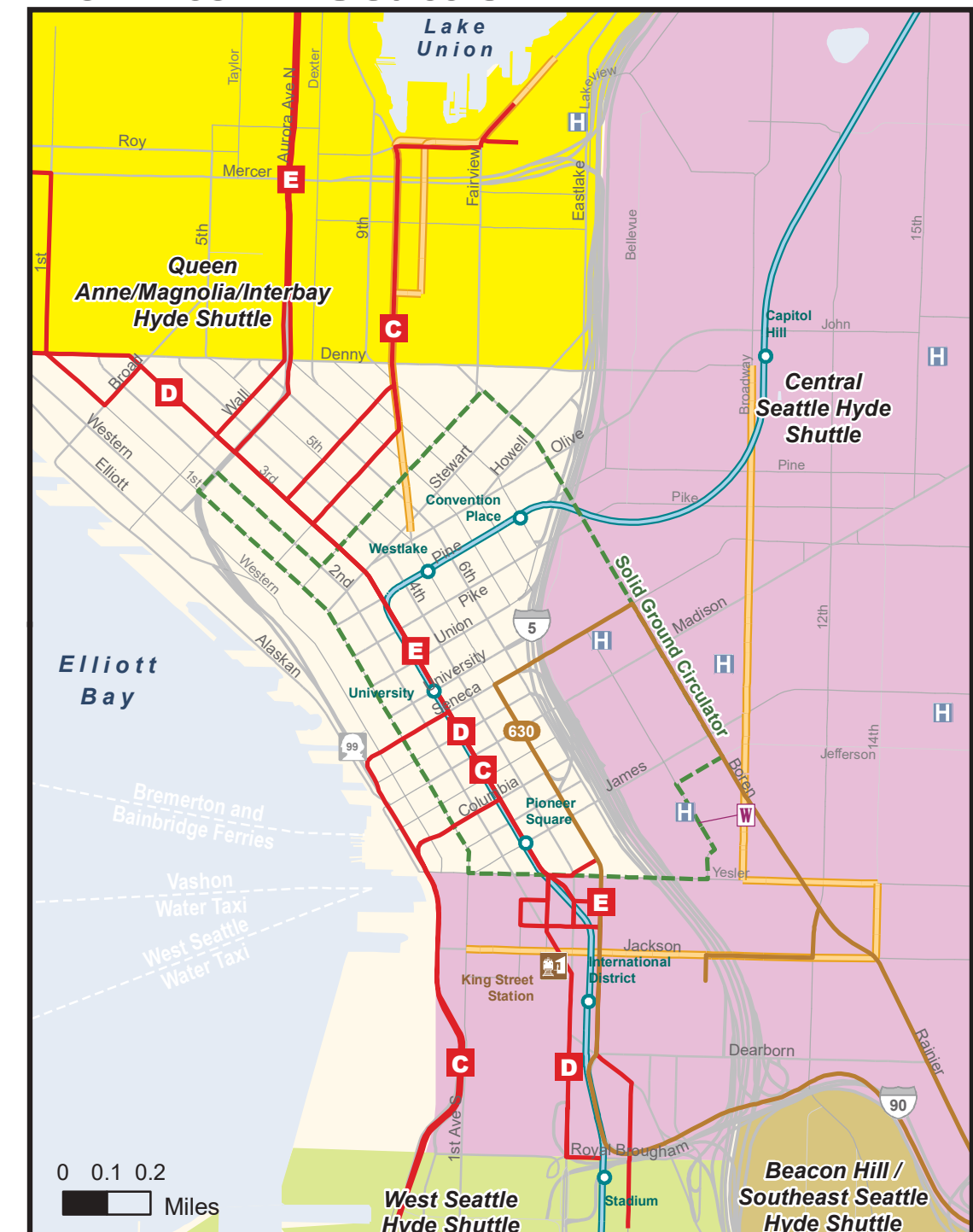
King County



Snoqualmie Valley



Downtown Seattle



KING COUNTY TRANSPORTATION SERVICES



American Parkinson's Disease Association (APDA) Ride Repay

www.apdanorthwest.org
206-695-2905
Use the transportation provider of your choice to go wherever you wish. APDA will reimburse up to \$300 per year for eligible travel expenses such as taxi, bus, ferry, or rail fare, or gasoline expenses.

American Cancer Society Road to Recovery*

www.cancer.org
1-800-227-2345
Provides transportation to and from treatment for people with cancer who do not have a ride or are unable to drive themselves.

Catholic Community Services - Volunteer Services Program*

www.ccsww.org
206-323-6336
Volunteer services including free transportation for seniors 60+, living on a limited income with health and/or mobility limitations as well as for adults with disabilities. Call at least one week in advance to schedule a ride.

Eastside Friends of Seniors*

www.eastsidefriendsofseniors.org
425-369-9120
Provides transportation for seniors who live in Issaquah and Sammamish. Clients must be 60+ years and live independently.

Enumclaw Senior Center Van

360-825-4741
Provides transportation for seniors 55+ to and from the Senior Center and other trips within Enumclaw city limits. Operates Monday to Thursday from 8:30 am to 2:30 pm. One way is \$0.50.

FindARide

www.FindARide.org
425-943-6761
A one-stop-shop for service providers and anyone in the community to find your best transportation options in the Puget Sound region.

Health Sciences Express

206-685-3146
The Health Sciences Express provides transportation between University of Washington Medical Center and Harborview Medical Center, with stops at Roosevelt Clinic and UW Tower. Call for details.

Hopelink

www.hopelink.org
800-923-7433, TTY 800-246-1646
Coordinates medical transportation for Medicaid patients with a ProviderOne Medicaid ID.



King County Water Taxi

206-684-1551, TTY Relay 711
www.kingcounty.gov
Offers service from both Seacrest Park in West Seattle and Vashon Island's ferry terminal to Pier 50 on the Seattle waterfront. If you need assistance boarding the vessel, please inform a crew member.

Kirkland Senior Van

www.kirklandwa.gov
425-587-3363
Transportation for Kirkland residents to Peter Kirk Community Center, local shopping, and medical appointments in Kirkland, Bothell, Redmond, and Bellevue. Riders must be Metro Access eligible. Call to schedule at least 24 hours in advance.

Northshore Senior Center Transportation

www.northshoreseniorcenter.org
425-286-1026
Transportation to and from the Senior Center, medical appointments, and local shopping for seniors and people with disabilities. Contact Northshore Senior Center to confirm details and service boundaries.

Rainier Foothills Wellness Foundation Care Van

www.rfwellnessfoundation.org
360-284-2444
Free service to anyone who demonstrates a transportation hardship for healthcare transporting needs. Please call at least two days in advance to schedule a ride. A \$5 donation is suggested. The service area includes Enumclaw, Black Diamond, Buckley, Wilkeson, and Carbonado.



Rideshare Operations

www.rideshareonline.com
206-625-4500, 800-427-8249
Ridematching for daily commutes or trips to special events.

Seattle Center Monorail

www.seattlemonorail.com
206-905-2620, 206-905-2600
Travels between Seattle Center and Westlake Center Mall. CASH ONLY—does not accept ORCA cards.

Seattle Streetcar

www.seattlestreetcar.org
206-553-3000, TTY Relay 711
Two routes (South Lake Union and Capitol Hill) feature a minimal gap between platform and streetcar with wheelchair ramps that automatically deploy by pressing a button. See map on reverse side for details.

Snoqualmie Valley Transportation (SVT)

www.SVTBus.org
425-888-7001
Monday – Friday, 6AM – 8PM. Call in advance. Door to door for \$1. Ages 13+. North Bend, Snoqualmie, Fall City, Preston, plus other services. See map on reverse side for details.

Solid Ground

www.solid-ground.org
206-753-4801, TTY Relay 711
FREE accessible Downtown Circulator Bus for people living on low incomes and those who access health and human services in the downtown area. See map on reverse side for details.

Sound Generations Volunteer Transportation Program*

www.soundgenerations.org
206-448-5740, 800-282-5815
North Bend, Snoqualmie, Fall City, and Preston residents, call 425-888-7001. This service is for senior residents of King County (60+) for medical appointments only. Must be able to get in & out of a car without help. Available Monday to Friday, 8AM to 5PM. Call by Tuesday (or before) for any rides the following week.



Sound Transit

www.soundtransit.org
206-398-5000, 800-201-4900, TTY Relay 711
Regional bus, light rail, & commuter rail serving King, Pierce, and Snohomish Co.

Yellow Cab—Wheelchair Accessible Taxi

www.seattleyellowcab.com
206-622-6500
Wheelchair Accessible Taxis (WATs) are available 24/7/365 to provide on-demand, door-to-door service throughout King County. Ramp-equipped WATs are capable of carrying a 700 pound wheelchair and 3-4 passengers. For best service, download the SeattleYellowCab and "Tap the App".



KING COUNTY METRO SERVICES

www.kingcounty.gov
206-553-3000, TTY Relay 711

Access Transportation

206-263-3113, TTY Relay 711
A shared-ride van service for people whose disabilities prevent them from using accessible, non-commuter, fixed route bus service. Before using Access ADA paratransit service, a person must be determined eligible. Call or visit us online to request an application.

Duvall Community Van

www.kingcounty.gov/metro/Duvall
425-939-8077
Community Van provides a shared ride service in the greater Duvall area. Each rider pays a one-zone Metro fare. Accessible trips are available upon request.

Demand Area Response Transit (DART)

866-261-3278; TTY 800-246-1646
DART can travel off its normal route to serve other locations within the shaded DART service areas (see map on reverse). You may need to get on or off the van at a location a block or more from your home or destination. DART service is available to everyone. Call to request off-route trips.

Metro Transit

Fixed route bus service in King County. All Metro buses have lifts or ramps for wheelchair and scooter users and others who use a walker or cane or simply have trouble climbing steps. You will need to get on and off the bus at an accessible bus stop. The bus stop sign will be marked with one of three stickers:



The "No Lift" sign indicates a mobility device cannot board or disembark.

RapidRide

RapidRide is a distinctive red bus that operates 7 days a week. RapidRide gives riders a streamlined service to destinations along the routes and to places where they can transfer to other buses and light rail. See map on reverse side for details.



Redmond LOOP

www.redmond.gov/LOOP
425-702-9616
Developed in partnership between Metro and the City of Redmond, the LOOP is a new travel resource that offers a convenient way to access destinations in Education Hill, Avondale, Southeast Redmond and Downtown Redmond.

Taxi Scrip Program

Serves low-income King County residents who have a Regional Reduced Fare Permit (RRFP). Scrip does not expire and is not refundable. Once registered, you can buy up to seven books of taxi scrip each month from Metro at a 50 percent discount.

Transit Instruction

206-749-4242, TTY Relay 711
Free bus and route training for seniors and persons with disabilities.

Water Taxi Shuttle DART

206-684-1551, TTY Relay 711
Two free shuttles operate between local neighborhoods and the Water Taxi. Route 773 serves West Seattle Junction. Route 775 serves the Admiral District and Alki Avenue SW.

* Not lift-equipped or wheelchair accessible

SOUND GENERATIONS HYDE SHUTTLES

www.soundgenerations.org
206-727-6262

Free van service for seniors 55 or older and people with disabilities. Operates Monday through Friday from 8:00 am to 4:30 pm. Ride anywhere within your neighborhood service area (there is no service in downtown Seattle). There is no charge for service, but donations are welcome. See map on reverse side for more details.

Auburn Hyde Shuttle

Beacon Hill/Southeast Seattle Hyde Shuttle
Also travels to First Hill medical centers.

Burien Hyde Shuttle

Central Seattle Hyde Shuttle
Includes First Hill, Capitol Hill, Central area, and the International District.

Des Moines/Normandy Park Hyde Shuttle
Also travels to Federal Way on Fridays only. Shuttle travels north to 136th in Burien.

Federal Way Hyde Shuttle

Northeast Seattle Hyde Shuttle
Also travels to Northwest Hospital and medical facilities.

Northwest Seattle Hyde Shuttle
Also travels to Northgate Mall, and Northgate medical facilities.

Queen Anne/Magnolia/Interbay Hyde Shuttle

Renton Hyde Shuttle

SeaTac/Tukwila Hyde Shuttle
Also travels to Franciscan Medical Center.

Shoreline/Lake Forest Park Hyde Shuttle

Also travels to Northwest Hospital and Northwest medical facilities, Northgate Mall, and Northgate medical facilities.

West Seattle Hyde Shuttle
Also travels to First Hill medical centers.

Snoqualmie Valley Hyde Shuttle
425-333-4009, 877-415-3632



ORCA

Regional Reduced Fare Permit

www.kingcounty.gov
206-553-3000, TTY Relay 711
The RRFP allows eligible seniors (age 65 or older), people with disabilities, and Medicare card holders to ride public transportation systems for a reduced fare. The cost of the RRFP card is \$3.00.

ORCA LIFT

www.orcalift.com
206-553-3000, 888-988-6722, TTY Relay 711
Qualified low income riders may pay a reduced fare for each ride on King County Metro bus and water taxi, Kitsap Transit and foot ferry, Seattle Streetcar, and Sound Transit. Eligibility is based on your household income. Once you qualify, you can apply in person at any of the authorized enrollment offices around King County. Visit Metro.KingCounty.org for enrollment locations and days/hours of operation.

This project is sponsored by the King County Mobility Coalition in partnership with King County Metro, Harborview Medical Center, and Hopelink.

Current as of Summer 2016
Please contact agencies for updated information.

Photos: Courtesy of represented agencies
Illustration: www.clipart.com

ORCA



One Regional Card for All

www.orcacard.com
206-553-3000, 888-988-6722, TTY Relay 711

King County Metro and other public transportation agencies use a regional smartcard called ORCA. The ORCA card works like a debit card or a pass, automatically tracking your fare, payments, and transfers so you don't have to. Use ORCA on:

- Access (passes only)
- King County Metro buses & Water Taxi
- Community Transit
- Everett Transit
- Kitsap Transit
- Pierce Transit
- Sound Transit
- Seattle Streetcars
- Washington State Ferries (walk-on passenger fare)

To get or load an ORCA card:

- Call to order a card, load it with money or a pass, register a card in your name, or ask questions.
 - Mail: ORCA Regional Mail Center 201 S. Jackson St. MS TR-0108 Seattle, WA 98104-3856
 - Online: www.orcacard.com
 - ORCA To-Go: on the spot full-service ORCA card sales and assistance. Call or visit online for locations.
- ORCA cards cost \$5. You must load it with a pass or cash to use it on the bus. You can still use cash to pay fares.

KING COUNTY TRANSPORTATION



Accessible Travel in Your Community

King County MOBILITY COALITION



September 11, 2018

To Whom It May Concern:

The Northshore Senior Center is deeply committed to providing access to necessary services and supports for older adults, disabled adults and other vulnerable populations in our region. Our Northshore Senior Center transportation program has been a critical component of our region's transportation network and we are eager to continue to meet this need for our community.

The Northshore Senior Center is happy to commit the necessary funds to provide a match toward the funds we are applying for from WSDOT. This amount (approximately \$25,000) is less that Northshore Senior Center has committed towards this project over each of the past several years. Funds are generated through general fundraising efforts including annual appeals, events, and individual asks to donors.

In addition to these committed funds, Northshore Senior Center has applied for significant additional funding from the various local municipalities that we serve, including Woodinville, Kenmore and Bothell. We have received funding in support of our transportation program from these cities for many years and anticipate this continuing, however 2019-2020 budgets have yet to be firmed up by these jurisdictions and as such no formal commitment can be made.

Thank you so much for your consideration of this funds request. We are thrilled to continue to partner with WSDOT to meet the mobility needs of vulnerable people in our community.

Sincerely,

A handwritten signature in black ink, appearing to read "Brooke Knight", with a long horizontal flourish extending to the right.

Brooke Knight, CEO



From the office of Amy Beiter, MD, Chief Executive Officer

September 5, 2018

To Whom It May Concern:

EvergreenHealth supports Northshore Senior Center's Consolidated Grant Application for accessible transportation services in the Northshore Region of North King County/South Snohomish County.

Northshore Senior Center has a 46 year history of providing innovative programs and services to meet the needs of older adults and adults with disabilities in our region. Their transportation program provides thousands of rides to individuals annually, helping to ensure access to needed services and supports such as medical appointments, social engagements and trips to the grocery store. The Northshore Senior Center's transportation program has a strong reputation for providing excellent customer care and is respected and valued deeply by people who use the program. Funds requested will provide staffing, vehicle maintenance, training, and general operations.

This project supports EvergreenHealth's purpose to enrich the health and wellbeing of our community by ensuring access to healthcare, education and social engagement. We applaud the efforts of Northshore Senior Center and their commitment to older adults and their caregivers. Through our partnership, we are able to support and provide much needed services to this rapidly growing population.

Thank you for considering our comments regarding Northshore Senior Center's application. Should you have any questions, please feel free to contact me at 425-899-2610.

Sincerely,

A handwritten signature in black ink, appearing to read "Amy Beiter".

Amy Beiter, MD
Chief Executive Officer
EvergreenHealth

CC: Brooke Knight, Northshore Senior Center, CEO
Susan Vaughn, Northshore Senior Center, Transportation Manager



August 31, 2018

Brooke Knight
Executive Director
Northshore Senior Center
10201 East Riverside Drive
Bothell, WA 98011-3708

Dear Brooke,

The Snohomish County Transportation Coalition (SNOTRAC) counts it a privilege to support the Northshore Senior Center's Consolidated Grant Application for accessible transportation services in the Northshore Region of North King County/South Snohomish County.

We recognize the Northshore Senior Center as having a long history of providing innovative programs and services to meet the needs of older adults and adults with disabilities in our region. Their transportation program provides thousands of rides to individuals annually, helping to ensure access to needed services and supports such as medical appointments, social engagements and trips to the grocery store. The Northshore Senior Center's transportation program has a strong reputation for providing excellent customer care and is respected and valued deeply by people who use the program. We acknowledge the need for funding for additional staffing, vehicle maintenance, training, and general operations.

Your project supports SNOTRAC's short and long-term mission to advocate for improvement in transportation service and solutions through community input, coordination of resources and strategic partnerships. Northshore Senior Center is a strategic organization to Snohomish County, and is one of the few senior organizations that is working to bring transportation solutions to seniors who access services across county lines. We count you a strong ally and partner in our coalition.

Thank you for considering our comments regarding this application. Should you have any questions, please feel free to contact me at my phone or email below.

Sincerely,

Marianna E. Hanefeld, MA | *Mobility Manager*



Snohomish County Transportation Coalition
425.309.0836
mhanefeld@everettwa.gov
<https://www.qosnotrac.org>

CC: Brooke Knight, Northshore Senior Center CEO
Susan Vaughn, Northshore Senior Center Transportation Manager

SNOTRAC @ Everett Transit
3201 Smith Ave, Ste 215 | Everett, WA 98201
425.309.0836 | fax 425.257.8945

September 4, 2018



City of Bothell™

To Whom It May Concern:

The City of Bothell supports Northshore Senior Center's Consolidated Grant Application for accessible transportation services in the Northshore Region of North King County/South Snohomish County.

Northshore Senior Center has a 46 year history of providing innovative programs and services to meet the needs of older adults and adults with disabilities in our region. Their transportation program provides thousands of rides to individuals annually, helping to ensure access to needed services and support, such as medical appointments, social engagements and trips to the grocery store. The Northshore Senior Center's transportation program has a strong reputation for providing excellent customer care and is respected and valued deeply by people who use the program. Funds requested will provide staffing, vehicle maintenance, training, and general operations.

This project directly supports the City's priority to address human service needs within our community.

Thank you for considering our comments regarding Northshore Senior Center's application. Should you have any questions, please feel free to contact me at 425.806.6100.

Sincerely,

A handwritten signature in black ink, appearing to read "Andrew J. Rheume", is written over a horizontal line. The signature is fluid and cursive.

Andrew J. Rheume
Mayor

CC: **Brooke Knight, Northshore Senior Center CEO**
Susan Vaughn, Northshore Senior Center Transportation Manager

Office of the City Manager
18415 - 101st Avenue NE
Bothell, WA 98011
425.806.6140
www.bothellwa.gov