

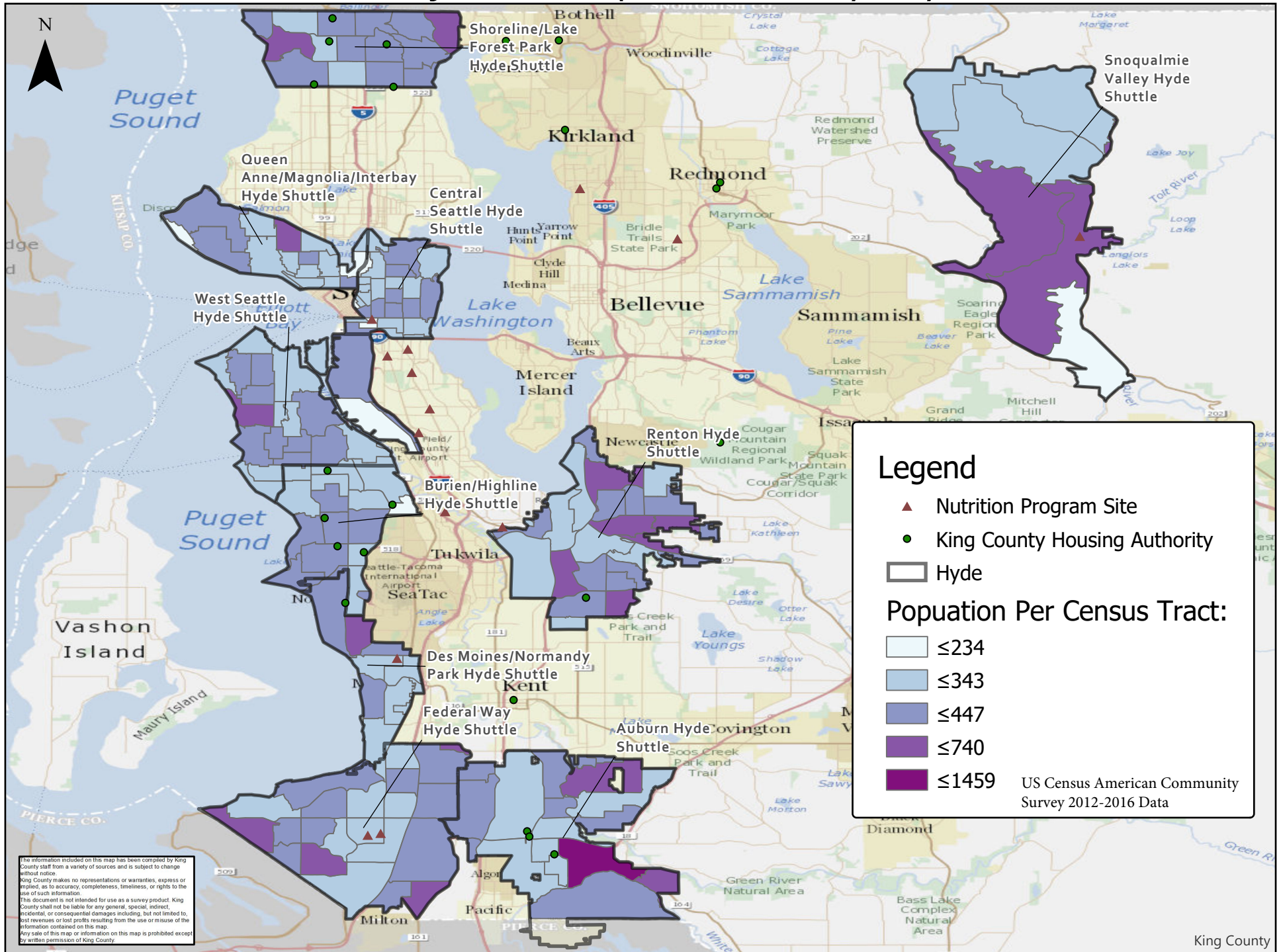
Sound Generations of Seattle/King County In-Kind Match Valuation Proposal

External In-kind Match

King County Metro will donate the following real property, equipment, goods and/or services to Sustain the Hyde Shuttle project in King County during the 2019 - 2023 funding biennium. King County has

- Vehicle Use \$360,000 (\$625/month for 48 vehicle)
- Radio Airtime \$38,907 (\$58.95/month for 55 radios)
- Vehicle Maintenance \$110,400 (\$2,300/year for 48 vans)
- Trapeze Scheduling Software & \$65,000 IT Support
- Fuel \$198,878

Sound Generations Project Area Population Density - Hyde Shuttle Service





King County

**Department of Transportation
Metro Transit Division**

Paratransit/Rideshare Operations

EXC-TR-1240

821 2nd Ave.

Seattle, WA 98104-1519

September 7, 2018

Jim Wigfall
Sound Generations
2208 Second Avenue - #100
Seattle, WA 98121

Dear Mr. Wigfall:

King County Metro Transit is pleased to submit a letter of support for Sound Generations. Metro supports full funding to sustain the Hyde shuttle service that provides mobility for thousands of people with special needs in King County.

This project is funded by King County Metro Transit and supports Accessible Services mission to develop, maintain and promote safe, reliable, appropriate and sustainable alternatives to accessible, fixed-route service. Our commitment of vehicles, technical assistance and staff support through the Community Access Transportation Program are ways we can assist the community efforts to fill some of the transportation gaps in the area.

King County Metro will provide up to \$4,156,567 in revenue and \$1,546,370 of in-kind contributions during the four-year grant period (July 1, 2019 - June 30, 2023) contingent upon funding appropriation and up to 48 accessible vehicles. The Hyde shuttle program has done an excellent job in providing mobility for people with special needs in the region. Should you have any questions, please feel free to contact Don Okazaki, Transportation Planner, at 206-263-1082.

Sincerely,

Chrissy Russillo
Managing Director, Paratransit/Rideshare Operations



The Center for People of All Races

A voice and a hub for the Latino community
as we advocate on behalf of our people
and work to achieve social justice.

August 16, 2018

Programs & Services

*With over 24,846 volunteer hours,
El Centro de la Raza serves 14,506
individuals and 8,246 families annually
through the following programs and
services:*

Bebes! Infant Mortality Prevention
Business Opportunity Center
Café con El Centro de la Raza
César Chávez Demonstration Garden
College Readiness
Comadres Women's Support Group
Community Building and Advocacy
Community Connector Benefits
Enrollment
Community Meeting Space
Community Service / Volunteer
Opportunities
Cultural Arts / Social Events
ECR Transitional Housing
El Patio Apartments
ESL Classes
Federal Way Open Doors Case
Management
Financial Counseling / Education
Food Bank
Foreclosure Counseling
Growing & Learning Together (Parents
As Teachers)
Historical & Educational Presentations
Homeless Assistance – Eviction
Prevention
Hope for Youth Poetry & Civil Rights
History Classes
José Martí Child Development Center
Labor Standards Outreach and
Education
Latinos in Finance – Job Training
Legal Clinic Site
Lending Circles
Luis Alfonso Velásquez Flores After
School Program
ORCA Reduced Fare Enrollment
Parent-Child Home Program
Plaza Maestas After School Program
Plaza Roberto Maestas, Beloved
Community
Public Benefits Outreach and
Enrollment
Roberto Maestas Leadership Institute
Santos Rodriguez Memorial Park
Seattle Youth Violence Prevention Case
Management
Senior Wellness & Congregate Meal
Program
Smoking Cessation
Summer Learning - Academic & Cultural
Enrichment
Tax Prep Site
Veteran's Services
Youth Job Readiness Training
Young Adults in Tech

Jim Wigfall, CEO
Sound Generations
2208 Second Avenue, Suite 100
Seattle, WA 98121-2055

Estimado Mr. Wigfall,

I am writing as the Executive Director of El Centro de la Raza to support the application of Sound Generations for ongoing support for the Hyde Shuttles from the WAsDOT Consolidated Grant Application for 2019-2023. We are critical community partners and supporters of the Hyde Shuttle program that provides free shuttle transport for seniors and persons with disabilities throughout King County. The Senior Wellness and Congregate meal program provides: emotional, physical, social, intellectual, spiritual, and vocational health through nutrition education, balanced daily congregate meals, a weekly grocery bag from our food bank, and home delivered meals to homebound seniors every week. Seniors age 60 and older partake in various social and educational activities daily and exercise classes are offered three times a week.

For years, Hyde Shuttles have helped our citizens and clients remain independent and free, able to make it to everything important in their lives: medical appointments, meals, trips for shopping, fun and friendship. Hyde Shuttles provide a life-line for persons to stay connected with their communities and the larger world. In addition, Sound Generations is a partner with us and a number of other agencies who support the lives of older adults and persons with special needs.

Without these transportation services, our people would be isolated, unable to leave their homes. We urge the ongoing financial support of this essential service in our community.

Thank you for listening and for your assistance.

Respetuosamente,

Estela Ortega
Executive Director
El Centro de la Raza



September 13, 2018

Jim Wigfall, CEO
Sound Generations
2208 Second Avenue, Suite 100
Seattle, WA 98121-2055

Dear Mr. Wigfall,

I am writing as the City of Bellevue's human services Grant Coordinator to support the application of Sound Generations for ongoing support for the Hyde Shuttles from the WASDOT Consolidated Grant Application for 2019-2023. We are critical community partners and supporters of the Hyde Shuttle program that provides free shuttle transport for seniors and persons with disabilities throughout King County.

Bellevue provides over \$3.5 million in human services grants each year. Transportation for seniors and persons with disabilities is one of the major needs that the City is asked to address.

Although Hyde Shuttles do not currently operate in Bellevue, they have helped residents of King County remain independent and free, able to make it to everything important in their lives: medical appointments, meals, trips for shopping, fun and friendship. Hyde Shuttles provide a life-line for persons to stay connected with their communities and the larger world. In addition, Sound Generations is a partner with the City via their Volunteer Transportation and Meals on Wheels programs that support the lives of older adults and persons with special needs.

Without these transportation services, many county residents would be isolated, unable to leave their homes. We urge the ongoing financial support of this essential service in our community.

Thank you for listening and for your assistance.

Sincerely,

Denise Catalano, Grant Coordinator
City of Bellevue

City of Des Moines



DES MOINES ACTIVITY CENTER
2045 S. 216TH STREET
DES MOINES, WASHINGTON 98198-6398
(206) 878-1642



August 22, 2018

Jim Wigfall, CEO
Sound Generations
2208 Second Avenue, Suite 100
Seattle, WA 98121-2055

Dear Mr. Wigfall,

As the Senior Services Manager of the Des Moines / Normandy Park Activity Center, I support the application of Sound Generations for ongoing support of the Hyde Shuttles from the WASDOT Consolidated Grant Application for 2019-2023.

We were one of the first of the Hyde Shuttle program sites to provide free shuttle transport for seniors and persons with disabilities throughout King County. We are critical community partners and supporters of the Hyde Shuttles.

The Des Moines / Normandy Park Activity Center acts as a hub for senior services in the area, providing nutrition programs (Lunch on four days/week, Meals on Wheels), volunteer social workers and attorneys, low-cost foot care, and information on programs for low-income seniors (property tax reduction/exemption, help with energy costs, emergency services, etc.). We also provide regular recreational, educational and social programs.

For years, Hyde Shuttles have helped our citizens and clients remain independent and free, able to make it to everything important in their lives: medical appointments, meals, trips for shopping, fun and friendship. Hyde Shuttles provide a life-line for persons to stay connected with their communities and the larger world. In addition, Sound Generations is a partner with us and a number of other agencies who support the lives of older adults and persons with special needs.

Without these transportation services, our seniors/disabled citizens would be isolated, unable to leave their homes. We urge the ongoing financial support of this essential service in our community.

We would appreciate your continuing support of the Hyde Shuttle program.

Sincerely,

Kathy Burrows, Senior Services Manager
Des Moines / Normandy Park Activity Center.



City of Tukwila

Allan Ekberg, Mayor

Mayor's Office – David Cline, City Administrator

August 24, 2018

Rob Gannon
General Manager
King County Metro
201 S. Jackson St, KSC TR 0415
Seattle, WA 98104

Dear Rob Gannon:

On behalf of the City of Tukwila Human Services Program, I am writing to express our support for Sustaining Community Shuttles for Seniors and People with Disabilities in King County project submitted by King County Metro. This project will sustain demand-response shuttle service, currently operating under the Hyde Shuttle brand that provides mobility for thousands of people with special transportation needs in King County.

The project offers an effective strategy to meet the needs of seniors and individuals with disabilities in urbanized areas of King County and helps our residents by providing door-to-door service that makes transportation accessible. Hyde shuttles are a donation-based service – so price is not a barrier, helping people with special needs maintain their independence with the ability to get where they need to go, and allowing people to stay connected to their community and engaged in life.

We are very invested in keeping the Hyde Community Shuttle sustainable for our residents who are challenged with transportation. It meets a tangible need in helping our populations get their basic needs met. Thank you for considering our request to preserve the Hyde Community Shuttle service for our residents. If you have any questions, please contact me at the Human Services Office.

Sincerely,

A handwritten signature in cursive script that reads "Stacy Hansen".

Stacy Hansen
Human Services Program Coordinator
City of Tukwila
206-433-7180
Stacy.Hansen@Tukwilawa.gov



City of Burien
400 SW 152nd Street
Suite 300
Burien, WA 98166-1911

P 206.241.4647
F 206.248.5539

burienwa.gov

24 August 2018

Jim Wigfall, CEO
Sound Generations
2208 Second Avenue, Suite 100
Seattle, WA 98121-2055

Dear Mr. Wigfall,

I am writing as the Human Services Manager for the City of Burien to support Sound Generation's WASDOT Consolidated Grant Application for 2019-2023 for ongoing support of the Hyde Shuttles. We are critical community partners and supporters of the Hyde Shuttle program that provides free shuttle transport for seniors and persons with disabilities throughout King County.

The City of Burien has enjoyed a partnership and invested in Sound Generations for many years for Hyde Shuttles and to support the lives of older adults and persons with special needs. Access to basic transportation is of critical importance to our residents in promoting self-sufficiency and reducing isolation by allowing people to stay connected to their community and engaged in life. Transportation forms the link among all of the activities people need to access

Hyde Shuttles have helped our citizens and clients remain independent and free, able to make it to everything important in their lives: medical appointments, meals, trips for shopping, fun and friendship. Hyde Shuttles provide a life-line for persons to stay connected with their communities and the larger world.

We urge the ongoing financial support of this essential service in our community. Thank you for your consideration and assistance.

Sincerely,

Colleen Brandt-Schluter
206.439.3166
colleenb@burienwa.gov

King County
MOBILITY COALITION

Jim Wigfall
Sound Generations
2208 Second Avenue
Seattle, WA 98121

Dear Mr. Wigfall:


The King County Mobility Coalition supports Sound Generations' grant application, To Sustain the Hyde Shuttles – A Community-based Paratransit Service in King County. We are pleased to have been of assistance in evaluating the need for this project. Sound Generations is a member of the King County Mobility Coalition, and we commend them for their long time commitment to special needs transportation coordination in King County.

The Hyde Shuttles project is consistent with the needs identified in our local Coordinated Transit-Human Services Transportation Plan. Furthermore, this project supports the King County Mobility Coalition's vision of a coordinated transportation network that allows all people to move freely around King County and the Puget Sound region by providing affordable, accessible, and appropriate transportation for seniors and people with disabilities.

Sound Generations is a model of coordination in service delivery. We appreciate their commitment to serve on the King County Mobility Coalition and work towards providing mobility for all.

Thank you for considering our comments regarding Sound Generations' application. Should you have any questions, please feel free to contact Staci Haber at 425-943-6769.

Sincerely,


Alex O'Reilly
Coalition Co-Chair


Don Okazaki
Coalition Co-Chair


Staci Haber
Mobility Manager

August 27, 2018

Jim Wigfall, CEO
Sound Generations
2208 Second Avenue, Suite 100
Seattle, WA 98121-2055

RE: Letter of Support for Senior Services Transportation Program “To Sustain the Hyde Shuttles – A Community-Based Paratransit Service in King County.”

Dear Mr. Wigfall:

I am pleased to write a letter of support for the application of Sound Generations for ongoing support for the Hyde Shuttles from the WSDOT Consolidated Grant Application for 2019-2023. We are critical community partners and supporters of the Hyde Shuttle program that provides free shuttle transport for seniors and persons with disabilities throughout the Auburn community.


This service is invaluable for our citizens, particularly senior citizens and adults with disabilities. There is an urgent need for alternative transportation modes in our city and the Hyde Shuttles is a connector so people can access services such as medical appointments, grocery shopping, pharmacies, and our Senior Center that would not be available otherwise.

Sustaining the Hyde Shuttle means riders will continue to live healthier and independent lifestyles, which helps our city remain a vibrant, healthy place where people choose to live. The fact that there is no charge for the Hyde Shuttle program will also help our low-income population. We value having Sound Generations as a partner, along with a number of other agencies who support the lives of older adults and persons with special needs.

Without these transportation services, our people would be isolated and unable to leave their homes. We urge the ongoing financial support of this essential service in our community.

We appreciate your time and consideration in this matter.

Sincerely,


Nancy Backus
Mayor

Snoqualmie Valley

TRANSPORTATION COALITION

August 31, 2018

Jim Wigfall, CEO
Sound Generations
2208 Second Avenue, Suite 100
Seattle, WA 98121-2055

Dear Mr. Wigfall,

I am writing as the Program Manager of The Snoqualmie Valley Transportation Coalition to support the application of Sound Generations for ongoing support for the Hyde Shuttles from the WASDOT Consolidated Grant Application for 2019-2023. We are critical community partners and supporters of the Hyde Shuttle program that provides free shuttle transport for seniors and persons with disabilities throughout King County.

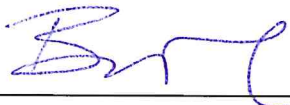
This project supports The Snoqualmie Valley Transportation Coalition's mission to affordable, accessible, equitable, and collaborative transportation for older adults and individuals with disabilities in Snoqualmie Valley. Our goal is to create a coordinated network to meet the needs of the community and ensure residents can get to critical, often life saving services.

For years, Hyde Shuttles have helped our citizens and clients remain independent and free, able to make it to everything important in their lives: medical appointments, meals, trips for shopping, fun and friendship. Hyde Shuttles provide a life-line for persons to stay connected with their communities and the larger world. In addition, Sound Generations is a partner with us and a number of other agencies who support the lives of older adults and persons with special needs.

Without these transportation services, our people would be isolated, unable to leave their homes. We urge the ongoing financial support of this essential service in our community.

Thank you for listening and for your assistance.

Sincerely,



Brittany Krein, Program Manager
Snoqualmie Valley Transportation Coalition



SHORELINE
CITY COUNCIL

Will Hall
Mayor
Jesse Salomon
Deputy Mayor
Susan Chang
Doris McConnell
Keith A. McGlashan
Chris Roberts
Keith Scully

August 21, 2018

Jim Wigfall, CEO
Sound Generations
2208 Second Avenue, Suite 100
Seattle, WA 98121-2055

RE: Sound Generations' WSDOT Consolidated Grant Application

Dear Mr. Wigfall,

I am writing to support Sound Generations' Consolidated Grant Application to support the ongoing operations of the Hyde Shuttles. As the City of Shoreline's Grants Administrator, I have experience with Sound Generations and the various services that are provided to the Shoreline community. Your agency is an important partner in our city in the service of older adults and persons with special needs.

As you are aware, Hyde Shuttles are managed locally through the Shoreline/Lake Forest Park Senior Center and provide a critical resource to our citizens. The service helps our citizens live independent lives by allowing them to attend necessary appointments and continue to be able to shop and attend events. Transportation services help reduce isolation and are a critical resource in our community.

Sound Generations successful management of the Hyde Shuttles warrants continued support for the program through WSDOT's Consolidated Grant Program. If you have any questions – don't hesitate to contact me at bwolbrec@shorelinewa.gov or 206-801-2331.

Sincerely,

Bethany Wolbrecht-Dunn
Grants Administrator



August 30, 2018

Jim Wigfall, CEO
Sound Generations
2208 Second Avenue, Suite 100
Seattle, WA 98121-2055

Dear Mr. Wigfall,

I am writing to support the application of Sound Generations for ongoing support for the Hyde Shuttles from the WSDOT Consolidated Grant Application for 2019-2023. We are critical community partners and supporters of the Hyde Shuttle program that provides free shuttle transport for seniors and persons with disabilities throughout King County.

As the Area Agency on Aging for Seattle-King County, Aging and Disability Services plans, coordinates, and advocates for a comprehensive service delivery system for older adults, family caregivers and people with disabilities. During our community engagement process for the Area Plan on Aging and through other planning activities, older adults and people with disabilities have consistently identified transportation among the top barriers that they face in the community.

For years, Hyde Shuttles have helped our clients remain independent and able to access services including medical care and congregate meals. Hyde Shuttles provide a life-line for persons to stay connected with their communities. Transportation is an important component of the services that Sound Generations provides as an older adult services network partner.

Without these transportation services, many older adults and people with disabilities would be isolated in their homes. We urge the ongoing financial support of this essential service in our community.

Thank you for considering this request. If you have any questions, please contact Jon Morrison Winters at jon.winters@seattle.gov

Sincerely,

Cathy Knight, Director
Aging and Disability Services

Aging and Disability Services

PO Box 34215, Seattle, WA 98124-4215

Office: Seattle Municipal Tower, 700 5th Ave, 51st Floor

TEL 206-684-0660 • FAX 206-684-0689 • TDD Relay Service: 711 • www.seattle.gov/humanservices

The Area Agency on Aging, in partnership with:





4800 South 188th Street
SeaTac, WA 98188-8605

City Hall: 206.973.4800
Fax: 206.973.4809
TDD: 206.973.4808

August 22, 2018

Jim Wigfall, CEO
Sound Generations
2208 Second Avenue, Suite 100
Seattle, WA 98121-2055

Dear Mr. Wigfall,

I am writing as the Director of Parks, Community Programs and Services Director to support the application of Sound Generations for ongoing support for the Hyde Shuttles from the WSDOT Consolidated Grant Applications for the 2019-2023. We are critical community partners and supporters of the Hyde Shuttle program that provides free shuttle for seniors and person with disabilities throughout King County.

The Hyde Shuttle program provides transportation for the seniors who attend the lunches at the SeaTac Senior Center, which is essential and important to each senior.

For years, Hyde Shuttles have helped our citizens and clients remain independent and free, able to make it to everything important in their lives; medical appointments, meals, trips for shopping, fun and friendship. Hyde Shuttles provide a life-line for persons to stay connected with their communities and the larger world. In addition, Sound Generations is a partner with us and a number of other agencies who support the lives of older adults and person with special needs.

Without these transportation services, our people would be isolated, unable to leave their homes. We urge the ongoing financial support of this essential service in our community.

Thank you for reading and for your assistance.

Sincerely,

Lawrence Ellis

Director of Parks, Community Programs and Services
City of SeaTac

Mayor

Michael J. Siefkes

Deputy Mayor

Erin Sitterley

Councilmembers

Rick Forschler

Joel Wachtel

Peter Kwon

Pam Fernald

Clyde Hill

City Manager

Joseph Scorcio

City Attorney

Mary Mirante Bartolo

City Clerk

Kristina Gregg