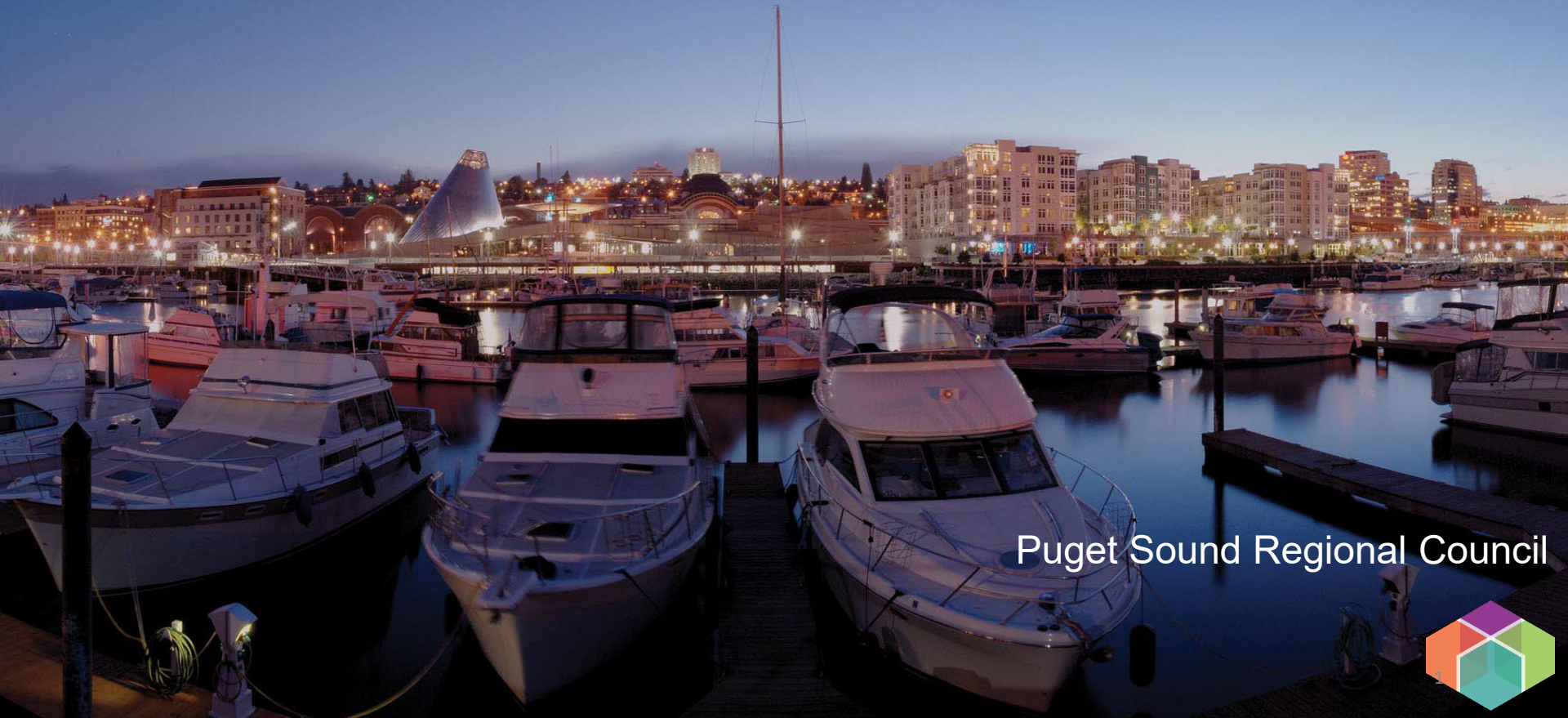


# 2022 Project Selection Process



Puget Sound Regional Council



# Workshop Agenda

- Overview
- *Policy Framework for PSRC's Federal Funds*
- Policy Focus
- Eligibility Requirements
- Process Details and Other Requirements
- Project Evaluation Criteria
- Project Tracking Requirements
- Schedule
- Details of the Regional FHWA Competition
- Online Resources and Forms



# Overview

Federal Highway Administration Funds	Federal Transit Administration Funds
Regional Competition	Regional Competition
Countywide Competitions	Earned Share Distribution

All processes will:

- Follow policy direction from Board, as adopted in the *Policy Framework for PSRC's Federal Funds*
- Follow regional policies and procedures
  - Consistent with VISION 2050 and the Regional Transportation Plan
  - Consistent with local comprehensive plans



# Policy Framework

## *Policy Framework for PSRC's Federal Funds*

- Adopted prior to each funding cycle
- Funds distributed approximately every 2 years
  - *Program funds into the future*
  - *2022 process will distribute FFY 2025-2026 funds*
- Based on VISION 2050 policies
  - *Support for centers and the corridors that serve them*
- Provides board direction for project selection
- Detailed policies and procedures for conducting the process



# Policy Focus

- Policy focus continues to be support for centers and the corridors that serve them:
  - FHWA regional competition = centers defined as regional growth and manufacturing/industrial centers
  - For all other processes = centers definition expanded to include locally identified centers
    - Military facilities included as a locally identified center for countywide competitions



# Eligibility Requirements

## FHWA Funds

- Surface Transportation Program (STP):
  - most flexible
  - can fund roadway, transit, bicycle/pedestrian, freight projects, etc.
  - minimum amount required to be spent in rural area (separate from the RTCC Program)
  - 13.5% match
- Congestion Mitigation & Air Quality Improvement Program (CMAQ):
  - projects must provide an air quality benefit
  - general purpose capacity projects ineligible
  - 13.5% match



# Eligibility Requirements

## FTA Funds

- projects must be transit-related
- local agencies eligible to apply with concurrence from a transit agency
- four specific funding programs with specific eligibility requirements
- 20% match

*FTA funding process on hold pending further board discussions*



# Recommending Forums

Committees recommend to Transportation Policy Board; Executive Board makes final decision

## **FHWA processes:**

Regional – Regional Project Evaluation Committee

Countywide forums –

- King County Project Evaluation Committee
- Kitsap Regional Coordinating Council
- Pierce County Transportation Coordinating Committee
- Snohomish County Infrastructure Coordination Committee

## **FTA process:**

Regional FTA Caucus, Transportation Operators Committee





# Project Selection - FHWA

## Shared Regional / Countywide Processes

- Regional competition
  - Limited number of applications, regional focus
- Countywide competitions
  - Set-asides distributed – preservation, bicycle / pedestrian
  - Rural minimum
  - Priorities within each county, based on Policy Framework
- For both:
  - single phase requests, or PE + 1
  - Phases must be fully funded with PSRC request and all other reasonably available funds



# Project Evaluation Criteria

**Project Evaluation Criteria** include the following elements:

- Support for development of the center(s) (including housing / employment)
- Benefit to user groups
- Mobility, accessibility, circulation
- Equity
- Safety
- Active transportation
- Air quality / climate
- Project readiness

Revised and  
elevated in 2022

Policy  
Criteria

Technical  
Criteria



# Project Tracking Requirements

Project Tracking System in place since 2003

## **Goal = Efficient use of PSRC funds**

- Projects are delivered in a timely manner, cost of delays are minimized
- Policies updated over time, address all funding programs and processes
- Progress reports required twice a year
- Specific to FHWA funds
  - June 1<sup>st</sup> obligation deadline
  - Each project award tied to a specific fiscal year
  - Opportunity to request a one-time extension
  - Annual delivery targets = “use it or lose it”



# Project Tracking Requirements

## FHWA obligation deadline extensions

- No longer automatically granted – rather, identification of reasons *not* allowed
- Earlier date for requesting extensions
- Two tiered process for approving extensions
  - First deadline = July 15<sup>th</sup>, for projects needing only a short extension after the June 1<sup>st</sup> deadline
  - Second deadline = no more than one additional year (to June 1 of following year), for projects needing more time; requires PSRC Board approval
- Regular monitoring and reporting

*New in 2022: Revised hardship policy*



# Schedule

## Application Deadlines

### FHWA Regional Process

- ♦ March 11th: Eligibility Screening Forms Due
- ♦ April 11th: Application Deadline
- ♦ Sponsors will present their projects on April 21st and 22nd

The Regional Project Evaluation Committee Recommendations Meeting is May 26th and May 27th

### FHWA Countywide Process

- ♦ Countywide Screening Forms Due March 7th through April 1st per each Countywide process
- ♦ Refer to specific Countywide Call for Project page for application

Countywide recommendations submitted to PSRC by June 27th

FTA Process Pending

## Regional TIP Development

July 8th: Deadline for all TIP project submittals	July 14: TPB recommendation meeting	July 28: EB approves recommendations	Sept — Oct: Draft TIP released for public comment	Oct 27th: EB adopts 2023—2026 Regional TIP	Jan 2023: Final state and federal approval
--	--	---	--	---	---



# FHWA Regional Competition

- Limited Number of Applications = 36
  - 6 each from Kitsap, Pierce and Snohomish Counties
  - 12 from King County
  - 2 each from Sound Transit, WSDOT, Puget Sound Clean Air Agency
- Policy Focus = support for regional centers and the corridors that serve them
- Three categories of projects
  - Regional Growth Centers
  - Manufacturing/Industrial Centers
  - Corridors Serving Centers



# FHWA Regional Competition

- Maximum amount to be requested by each application
  - 50% of available funds by year, by source
  - \$16.45 million of CMAQ available per year
    - *\$8.23 million maximum CMAQ request*
  - \$10.97 million of STP available per year
    - *\$5.48 million maximum STP request*
- Reminders:
  - sponsors may request a single phase, or PE + the subsequent phase
  - phases must be fully funded with PSRC and all other sources



# FHWA Regional Project Evaluation Criteria

## Policy Criteria:

- Varies slightly depending on category – Regional Growth Center, Manufacturing / Industrial Center, Corridor Serving Centers
  - Focused on:
    - Development of regional center
    - Circulation, mobility, accessibility
    - Equity
    - Safety
- New stand-alone criteria*





# FHWA Regional Project Evaluation Criteria

## Technical Criteria:

- Applies to all projects, regardless of category
- Focused on:
  - Air quality / climate change
  - Project readiness / financial plan



# FHWA Regional Project Evaluation Criteria

## Highlights of Development of Centers policy criterion

- How the project supports:
  - existing and planned housing and/or employment densities;
  - development / redevelopment plans and activities of the center;
  - establishment of new and support for existing jobs / businesses
- How the project benefits a variety of user groups



# FHWA Regional Project Evaluation Criteria

## Highlights of Mobility, Accessibility and Circulation policy criterion:

- How the project:
  - completes a gap or removes a barrier
  - reduces conflicts, remedies a problem
  - improves access and circulation for multiple modes
  - provides active transportation opportunities



# FHWA Regional Project Evaluation Criteria

## Highlights of Equity criterion

### Section 1

- Identifying the population groups to be served by the project
  - people of color, people with low-income, older adults, people with disabilities, youth, people with Limited English Proficiency, populations located in highly impacted communities, areas experiencing high levels of unemployment or chronic underemployment, immigrants and refugees, and transit dependent populations
- Identifying the disparities or gaps for these population groups
- Describing how the project addresses those disparities or gaps



# FHWA Regional Project Evaluation Criteria

## Highlights of Equity criterion

### Section 2

- How the development of the project is informed and influenced by public outreach and engagement

### Section 3

- The location of the project in relation to areas of displacement risk
- Agency mitigation strategies to address displacement risks



# FHWA Regional Project Evaluation Criteria

## Highlights of Safety criterion

- How the project:
  - addresses safety and security
  - helps protect vulnerable users of the transportation system
  - reduces reliance on enforcement and/or designs for decreased speeds
  - is informed by adopted safety policies within your jurisdiction



# FHWA Regional Project Evaluation Criteria

## Highlights of Air Quality / Climate Change criterion:

- Evaluating the project's potential to reduce emissions from:
  - Reducing trips
  - Reducing vehicle miles traveled
  - Improving travel flow / reducing vehicle idling
  - Converting vehicles to cleaner fuels
- CMAQ projects only:
  - Air quality score based on cost effectiveness
  - $(\text{CMAQ \$ requested} / \text{Useful life}) / \text{Emissions reduced}$
  - **New:** *Up to 10 points if located in an area of disproportionate impact for diesel pollution in the WA Environmental Health Disparities map*



# FHWA Regional Project Evaluation Criteria

## Highlights of Project Readiness / Financial Plan criterion:

- Will the project be ready to use PSRC funds by the requested date?
  - What is the schedule of the prerequisites for obligation, project milestones
  - What is the project budget and financial plan

## Key reminders:

- Single phase, or PE + 1
- Phase requested must be fully funded with request
  - *Based on reasonable financial plan and schedule*
- June 1<sup>st</sup> delivery deadline





# Tips for Completing Applications

- Be clear and concise
  - Provide a clear scope of work; how will the funds be used?
- Be thorough – answer every question, address every criterion
  - Respond to each bullet
  - Don't assume scoring team knows your project or your area
- Maps and graphics help illustrate your project and its location
- The policy focus is support for centers
  - It's not enough to have a good project; your project must meet the established criteria
- Delivery matters – make sure your schedule and your financial plan are feasible



# Online Resources and Forms

## Key resources on PSRC website:

- Policy Framework
- Eligibility information
- Resource maps
- Funding amounts available
- Guidance
  - screening form & applications checklists
  - financial constraint
  - air quality
  - equity



# Online Resources and Forms

- Online system for screening forms, applications
- Key Features:
  - Use regular TIP Application username and password
  - Save and return later
  - Questions based on which category selected
  - System will prompt if errors or blanks
- Key Tips:
  - Complete answers
  - Refer to criteria and guidance
  - Upload pertinent attachments

<https://www.psrc.org/our-work/funding/project-selection/fhwa-and-fta-regional-funding>



# Questions?

