



VISION 2050



Puget Sound Regional Council



What is VISION 2050?

By 2050, the region will grow by another 1.6 million people—the equivalent of another two Seattles.

The region has a plan for this growth called VISION 2050.

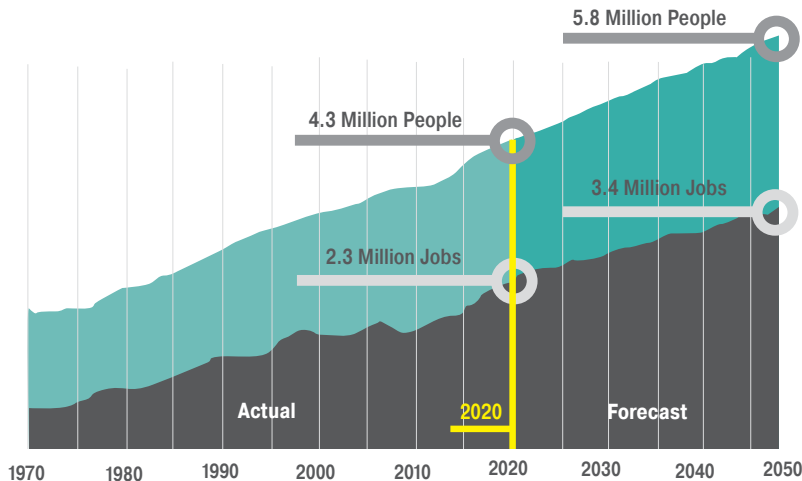
VISION 2050 is an ambitious blueprint for how to improve the region's communities as we grow. It is about making life better for all people in the region.



Central Puget Sound cities, counties and agencies adopted VISION 2050 in October 2020.

What's in the plan?

- **Actions**
VISION 2050 includes action steps for PSRC and local governments to work towards a shared vision for the future.
- **Regional Growth Strategy**
The Regional Growth Strategy is a way to distribute growth coming to the region—a forecast of 5.8 million people and 3.4 million jobs by the year 2050. The strategy focuses growth near high-capacity transit and inside the designated urban growth area.
- **Multicounty Planning Policies**
Multicounty Planning Policies help guide regional decision-making and are a common framework for countywide planning policies and local comprehensive plans.



Steps to make VISION 2050 happen



Provide opportunities for all

Everyone should have access to the resources and opportunities they need to improve their quality of life and achieve their full potential. VISION 2050 works to address current and past inequities, particularly among communities of color, people with low incomes, and historically underserved communities.

Growth puts pressure on communities. VISION 2050 seeks to reduce the risks of displacement of lower-income people and businesses by elevating social and racial equity in regional planning and encouraging local jurisdictions to include equity in their plans.

PSRC is collaborating with its members and community partners to develop a regional equity strategy and to create tools and resources to better understand how regional and local policies and actions can address inequities.



48%

Almost half of all Black and Hispanic/Latinx household live in areas of lower opportunity.



Increase housing choices and affordability

Although there's been a strong surge in housing construction, the region still needs more housing. Many residents are unable to find and keep a home that they can afford. It will take a coordinated effort to expand housing options and create more affordability. It won't be easy. Market pressures and strong employment keep pushing rents and home prices higher.

35%

Percent of renters who had to move in the last five years because of housing costs or other displacement factors.

VISION 2050 calls for cities and counties to support building more diverse housing types, especially near transit, services, and jobs. The plan also calls for more housing that's affordable to low- and very low-income households.

PSRC and its partners are developing a comprehensive regional housing strategy. In addition, PSRC is creating tools and resources to help cities and counties with their housing efforts.



Sustain a strong economy

Every person deserves a living-wage job and a chance to take part in the region's prosperity. Communities throughout the four counties contribute to the region's success.

Smaller cities provide important commercial, retail, and community services for adjacent rural areas. Farms and forests offer resource-based jobs and valuable products for the economy. Metropolitan cities are the economic and cultural hubs of the four counties. Regional manufacturing/industrial centers offer global connections and living-wage jobs for residents.

VISION 2050 works to support job growth, especially in Snohomish, Pierce, and Kitsap counties. It works in tandem with PSRC's Regional Economic Strategy to coordinate economic development efforts and strengthen the region's communities.

**3.4
million**

Number of jobs
forecast for the
region in 2050



Grow in centers and near transit

Connecting people to jobs, services and transit shortens commutes, reduces pollution, and gives people more time to spend with their families.

The region's residents have made unprecedented investments in transit over the last decade. VISION 2050 helps leverage those investments to help future growth go into more compact, walkable, transit-served neighborhoods. The plan sets an ambitious goal of attracting 65% of population growth to the region's centers and near high-capacity transit.

65%

VISION 2050's goal for the percentage of population growth attracted to the region's centers and high-capacity transit station areas.

VISION 2050 requires cities to plan for regional centers. PSRC will work with counties and cities as they set local housing and employment targets that implement the Regional Growth Strategy.





Keep the region moving

People want convenient access to jobs, amenities, schools, and open spaces. They also want alternatives to driving alone. Businesses need dependable access to markets, the workforce, and supply chains.

VISION 2050 supports a comprehensive transportation system for all modes of travel. The region's light rail, commuter rail, fast ferry, and bus rapid transit lines will expand into one of the country's largest high-capacity transit networks.

VISION 2050 lays out a foundation for completing regional transportation investments and the work of the Regional Transportation Plan to strengthen connections to and between the region's centers. The plan prioritizes transportation funding investments that support regional growth centers and manufacturing/industrial centers.

2 million

Number of people who will be connected to the region's high-capacity transit system by 2050.



Significantly reduce greenhouse gas emissions

The way we travel around the region impacts our air quality. So do other ways we use energy, like heating our buildings.

VISION 2050 includes a goal to reduce greenhouse gas emissions to 80% below 1990 levels. The plan promotes compact growth patterns, low-carbon travel choices, forest and open space protection, and other strategies that help mitigate greenhouse gas emissions and prepare for the impacts from climate change.

VISION 2050 incorporates PSRC's Four-Part Greenhouse Gas Strategy. In addition to reducing the region's carbon footprint, VISION 2050 calls for climate resilience and adaptation and reducing impacts to vulnerable populations at risk of being disproportionately impacted by climate change.

80%

Goal for emissions reductions below 1990 levels in the year 2050.





Protect a network of open space

Open spaces include hiking trails and neighborhood parks where our kids play. Forests and farms are an important part of our cultural traditions and economy.

VISION 2050 directs PSRC to work with its members, resource agencies, and Tribes to conserve, restore, and steward the region's open space and natural environment.

The region will protect natural areas and enhance the tree canopy with the Regional Open Space Conservation Plan. VISION 2050's Regional Growth Strategy guides growth to cities and urban areas. That reduces development pressures that threaten farms, forests, and natural areas.

145_k

Acres of open space conserved by Transfer of Development Rights programs across the region.



Restore the health of Puget Sound

The region has made progress restoring Puget Sound, but the Sound's overall health continues to decline. Orca and salmon populations are struggling, and some shellfish are too contaminated for us to eat. This jeopardizes the natural environment and our economy, as well as our sense of place and identity as a region.

VISION 2050 supports the work of the Puget Sound Partnership to promote a coordinated approach to watershed planning and restoring Puget Sound.

70%-90%

Percent of coho salmon that die in urban streams before they can spawn because of polluted stormwater and excessively high stream flows.

Key strategies for helping Puget Sound include protecting open space and restoring urban lands through redevelopment and public investment. Replacing outdated infrastructure and building sustainably with low-impact development will reduce environmental toxins.



Act collaboratively and support local efforts

Coordinated planning between cities, counties, ports and other special purpose districts, agencies, Tribes, and military installations is a foundational part of VISION 2050.

PSRC reviews plans to ensure that countywide planning policies, local comprehensive plans, subarea plans for regional centers, and transit agency plans work to advance VISION 2050 and the Growth Management Act.

Certification of plans is required for jurisdictions and agencies that intend to apply for PSRC funding or proceed with projects in the Regional Transportation Improvement Program.

PSRC assists cities and counties as they update countywide policies, growth targets, and local plans. The agency also supports state legislation that can help develop and implement local and regional plans.



**\$260
million**

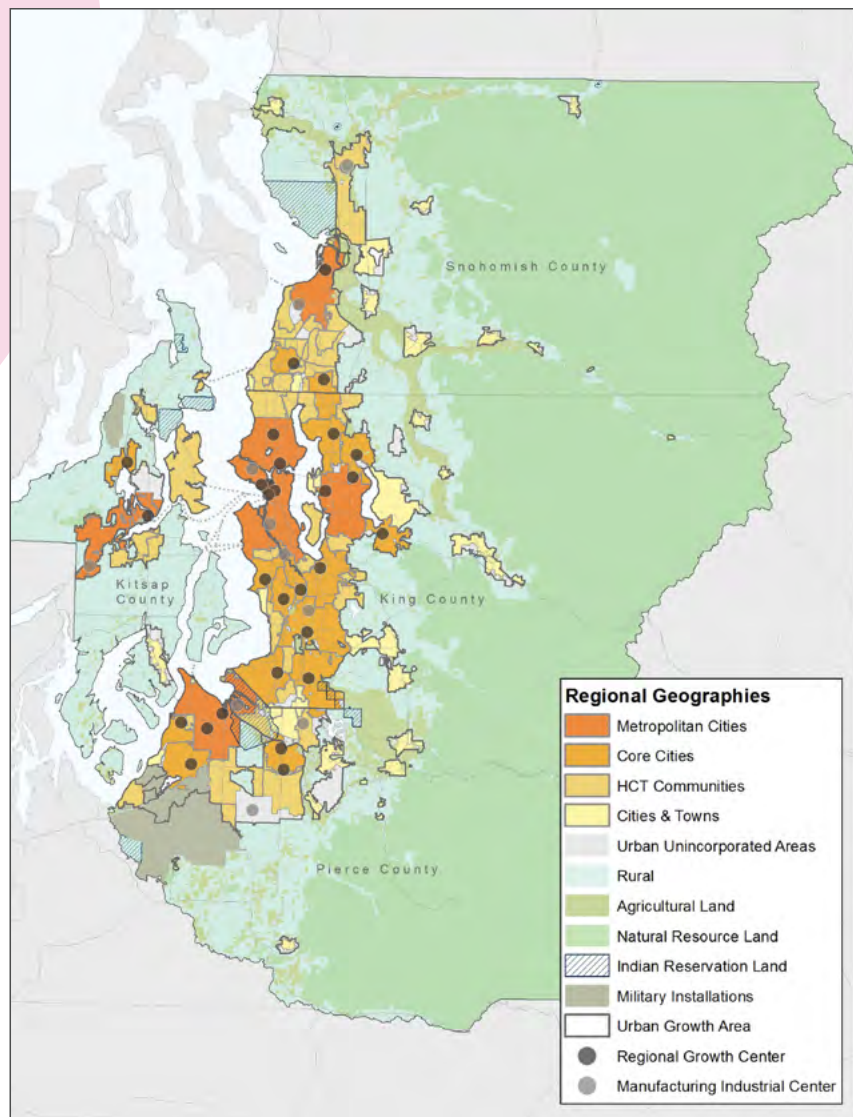
Average amount of federal transportation funding PSRC secures for the region every year.

Regional Growth Strategy

The central Puget Sound region is forecast to grow to 5.8 million people and 3.4 million jobs by the year 2050. The Regional Growth Strategy describes a preferred pattern of urban growth that:

- promotes a **healthy environment**
- supports economic **prosperity**
- advances social **equity**
- promotes **affordable housing** choices
- improves **mobility**
- makes **efficient** use of new and existing infrastructure

VISION 2050 focuses growth in the urbanized areas of the region, setting a goal of attracting 65% of the region's population growth and 75% of the region's job growth into regional centers and near high-capacity transit.

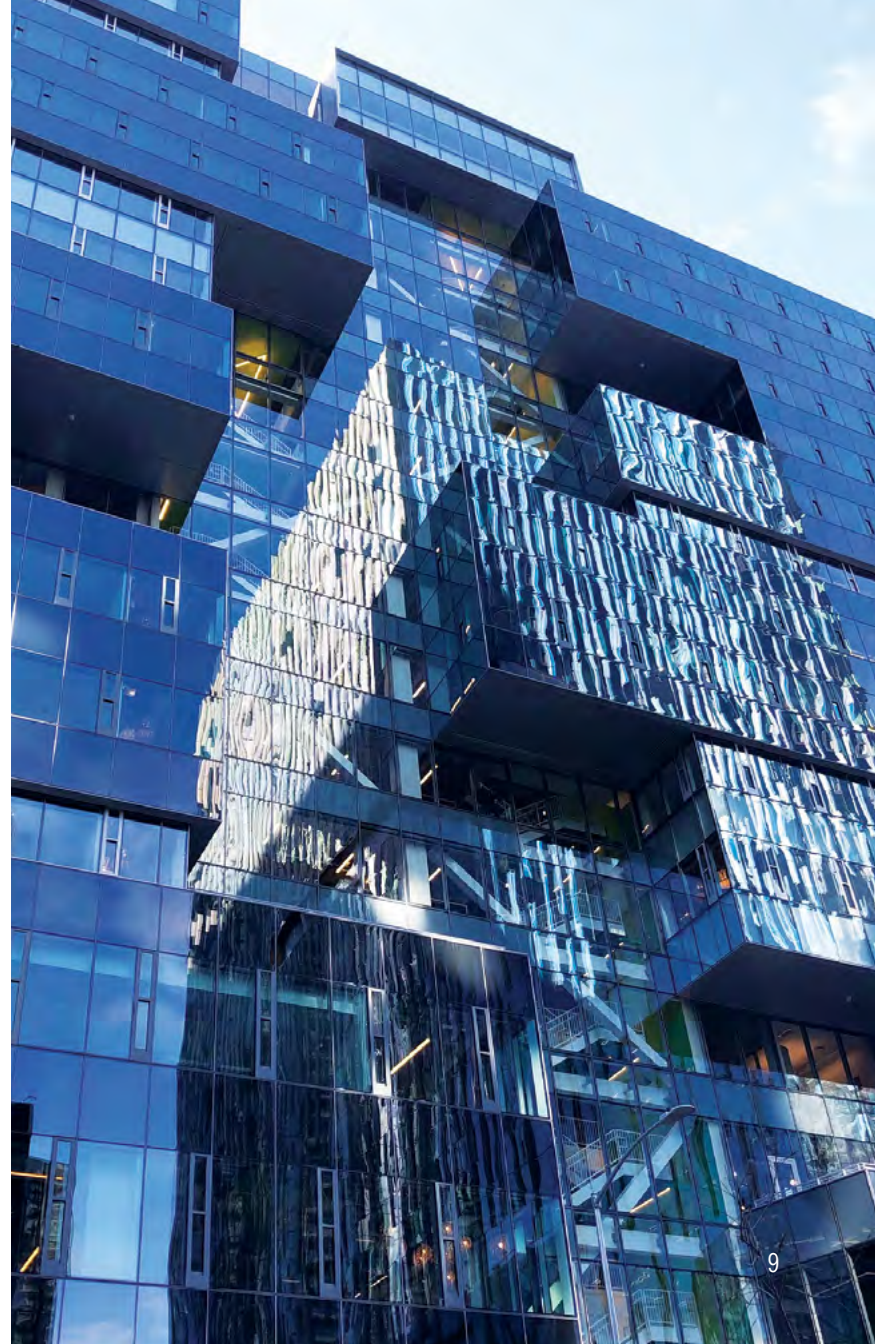


Multicounty Planning Policies

Multicounty planning policies serve three key roles: implementing the Regional Growth Strategy, creating a common planning framework for local plans, and providing policy structure for other regional plans.

Under the Growth Management Act, multicounty planning policies provide a framework for city and county comprehensive plans to achieve shared regional goals. They also guide a number of regional decisions, including PSRC's local plan and policy review, selecting transportation projects seeking regionally managed funds, and developing PSRC programs and projects.

Multicounty planning policies call for concentrating growth within the region's designated urban growth area and limiting development in natural resource and rural areas. The policies address a range of topics, including regional collaboration, climate change, housing, economy, transportation, and development.



What is the Puget Sound Regional Council?

The region comes together at PSRC to make decisions about transportation, growth management and economic development.

PSRC's nearly 100 members include King, Kitsap, Pierce, and Snohomish counties, local cities and towns, ports, state and local transportation agencies, and Tribal governments within the central Puget Sound region.

Find out more

Learn more about VISION 2050 and what's happening right now:

- Visit the VISION 2050 website:
<https://www.psrc.org/planning-2050/vision-2050>
- Sign up for updates from PSRC:
<https://www.psrc.org>
- Read about what's happening:
<https://www.psrc.org/about-us/latest-news>

