



Puget Sound Regional Council

PSRC and VISION 2050

Passport to 2044: Comprehensive Planning Workshop
June 15, 2022



Overview



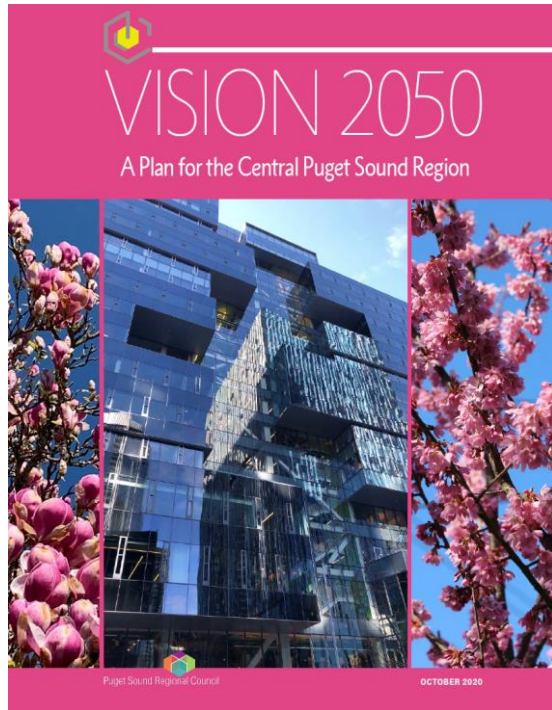
- PSRC and VISION 2050
- Plan Review Process & Certification
- Resources & What's Next
- Q & A










Purpose of PSRC's Plan Review Work



Provide resources to help you create local plans
that advance regional goals around mobility, climate
change, housing affordability, racial equity, and more!

Key Policy Themes from VISION 2050

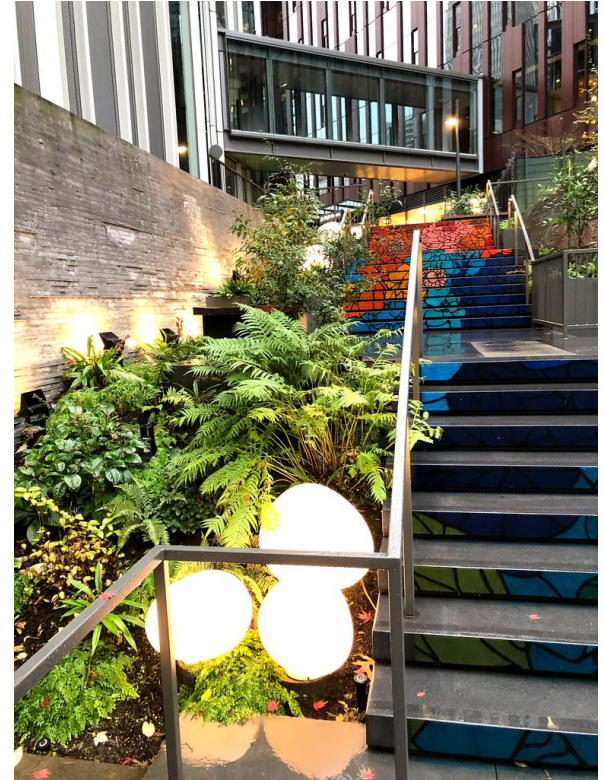


-  Increase **housing** choices and affordability
-  Provide **opportunities** for all
-  Sustain a strong **economy**
-  Significantly reduce greenhouse gas **emissions**
-  Keep the region **moving**
-  Restore the health of **Puget Sound**
-  Protect a network of **open space**
-  Growth in **centers** and near **transit**
-  Act **collaboratively** and support **local efforts**

What's different from VISION 2040?



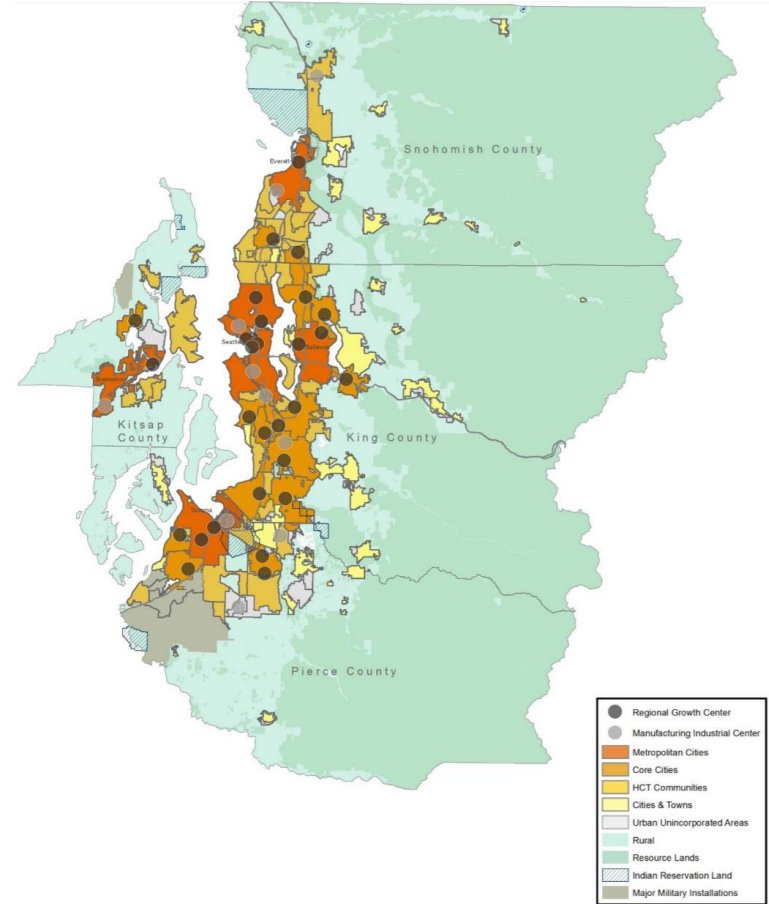
- Extends planning horizon to **2050**
- Updated growth strategy aims for **more growth near transit**
- New chapter on **climate change**
- Directs regional work on **housing** and **equity**
- Advocates for **sustainable funding** sources
- Increases recognition of **Native Tribes** and **military installations**



Regional Growth Strategy



- Regional geographies group cities and unincorporated areas based on shared characteristics
- Updates to regional geographies based on transit investments, annexation
- Alignment between the Regional Growth Strategy, growth targets, and assumptions in plans

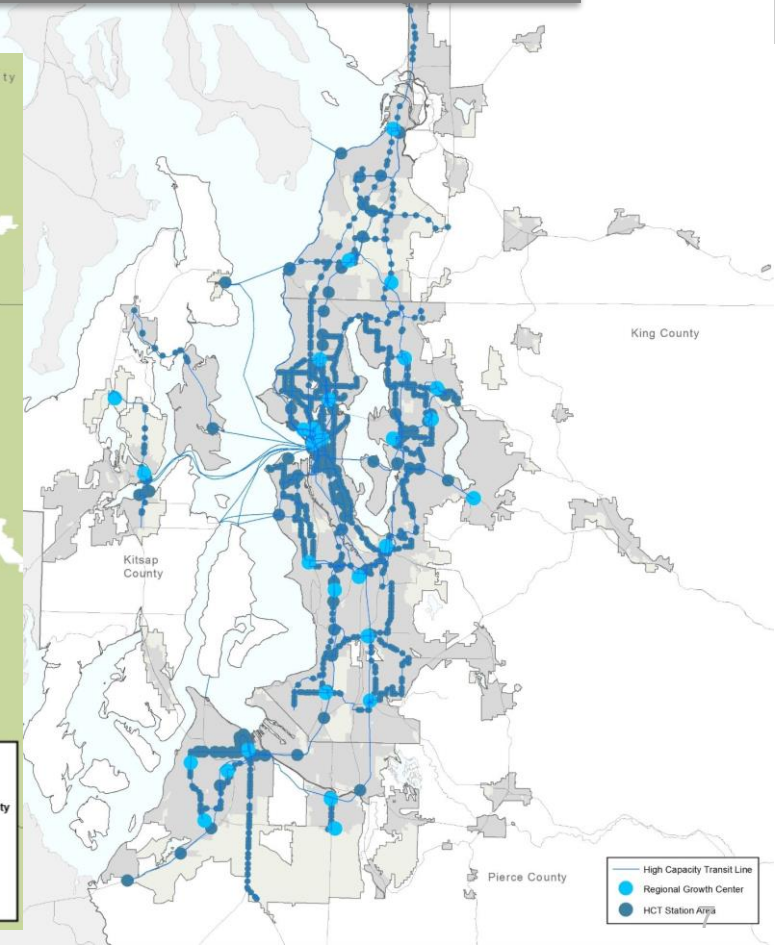
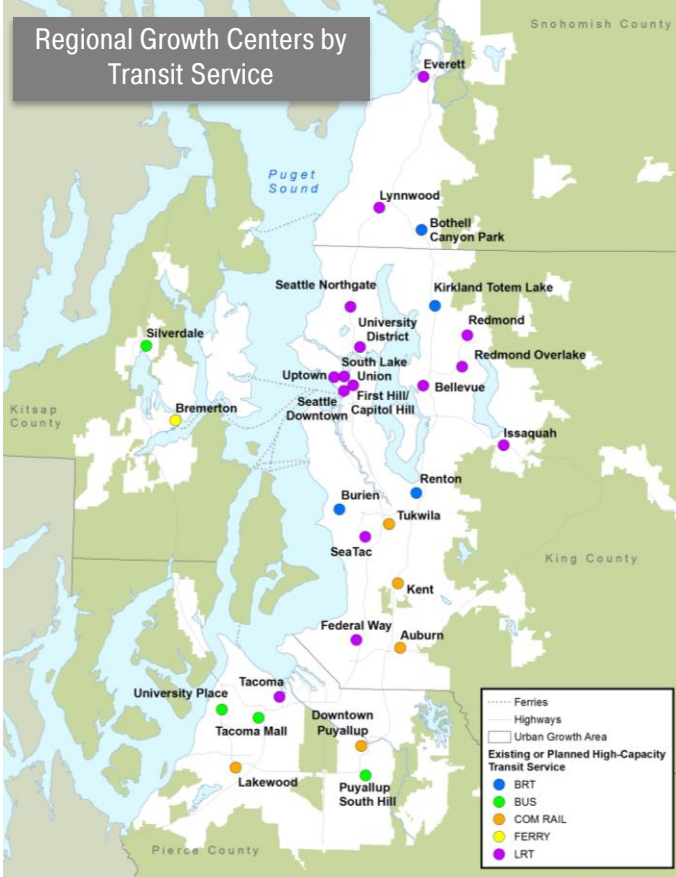


Centers & TOD

Regional Growth Centers and HCT Station Areas

Snohomish County

65% of population growth and 75% of employment growth goal for regional growth centers and high capacity transit station areas



Regional Centers



- Application window for new center designations opens in 2024/25
 - Local planning and countywide process – plan ahead!
- All regional centers must have certified subarea plan by 2025

Regional Centers Framework Update

Adopted March 22, 2018



Puget Sound Regional Council

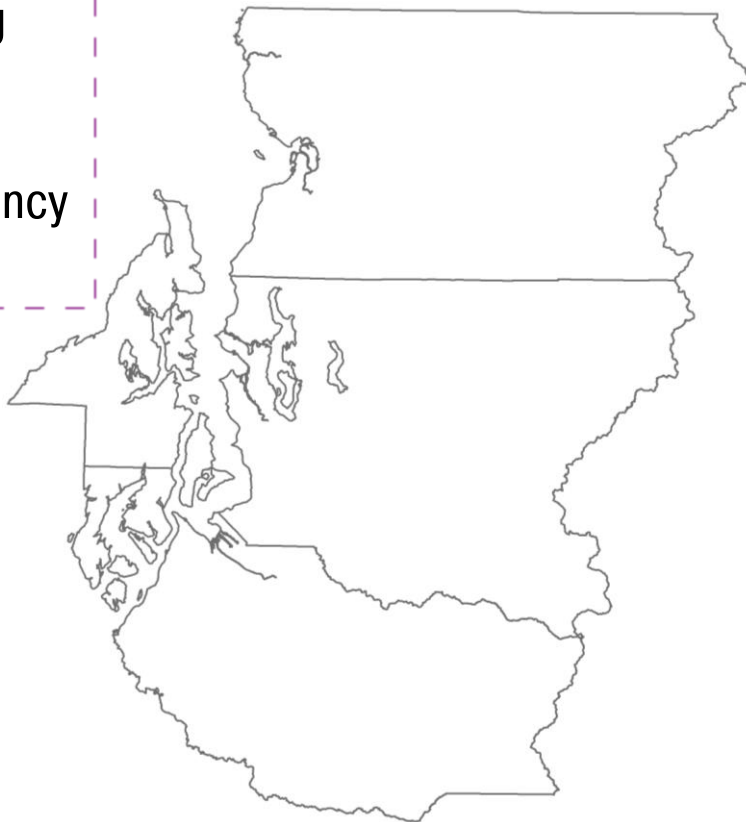
Countywide Implementation



Countywide planning policies & growth targets have been updated for consistency with VISION 2050

Kitsap County

2022 CPPs | [LINK](#)



Snohomish County

2021 CPPs | Targets | [LINK](#)

King County

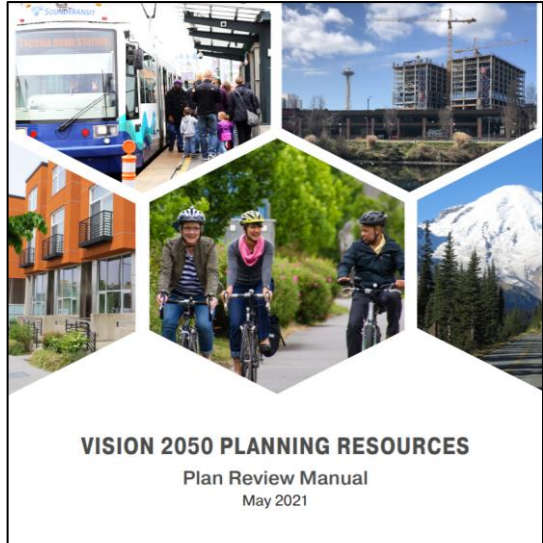
2021 CPPs | Targets | [LINK](#)

Pierce County [DRAFT]

2022 CPPs | [LINK](#)

Plan Review Process and Certification

Plan Review Manual



Plan Review &
Certification Webinar
hosted on June 30, 2021

Available at
<https://www.psrc.org/our-work/plan-review>

Regional Collaboration	
The plan supports collaboration for a healthy environment, thriving communities, and opportunities for all , including coordination with other jurisdictions and agencies, tribes, ports, military installations, and adjacent regions.	
Policies and programs should:	
Support regional collaboration	Page/Policy Reference
✓ Include a statement about how the plan relates to countywide planning policies, VISION 2050, and planning requirements of the Growth Management Act.	
✎ Coordinate with other jurisdictions, agencies, tribes, ports, military installations, special purpose districts, and adjacent regions (RCW 36.70A.070(6)(a)(v), MPP-RC-1, RC-4-5)	
✎ Prioritize services and access to opportunity for people of color, people with low incomes, and historically underserved communities to ensure all people can attain the resources and opportunities to improve quality of life and address past inequities (MPP-RC-2)	
✎ Address land use, transportation, and housing opportunities and challenges related to military installations, when applicable (MPP-RC-6)	
✓ Prioritize investments in centers, including regional centers, countryside centers, high-capacity transit areas with a station area plan, and other local centers (MPP-RC-8-9)	
✓ Explore funding sources, changes to regulatory, pricing, taxing, and expenditure practices, and other fiscal tools to meet infrastructure and other needs (MPP-RC-10-11, RC-Action-7, RC-Action-9)	
Additional comments on Regional Collaboration or additional documents to share (optional): _____	

VISION 2050 Consistency Tools

VISION Consistency Tool for Local Comprehensive Plans

Note: The tool shown here is for illustrative purposes. To fill out the tool, visit www.psrc.org/our-work/plan-review.

This tool is intended to help cities and counties integrate VISION 2050 into their local comprehensive plans. VISION 2050's multicounty planning policies serve as the adopted regional guidelines and principles required in state law to guide both regional and local planning. The tool also identifies transportation planning requirements of the Growth Management Act (GMA). The tool may be used at various times in the local planning process:

Plan Update Scoping: Use checklist items as guidance for scoping the extent of plan element updates. New or expanded issue areas in VISION 2050 are identified to support this process.

Draft Plan Review: Submit draft plans to PSRC prior to Planning Commission and Council review. Completing and submitting this tool and providing early drafts to PSRC help identify potential consistency issues early in the process.

Certification Review: Along with the adopted plan, the tool will assist in PSRC's review of the plan. Demonstrating inclusion of the necessary information in the checklist helps facilitate certification. *Note: The PSRC Executive Board is the final decision-making body for plan certification.*

Regional Collaboration: The tool provides cities and counties an opportunity to highlight supports sharing of best practices across the region and benefits jurisdictions as they

Resources

- Regional Plans: [VISION 2050](#), [Regional Transportation Plan](#), and [Regional Economic Development Plan](#)
- [VISION 2040 to VISION 2050](#) – summary of what changed in VISION 2050
- [VISION 2050 Policy Matrix](#) – a comparison of multicounty planning policies and a comparison of local policies to VISION 2050
- [Plan Review Manual webpage](#) – access more information about the review and certification process and other resources by policy area. See previous [certification reports](#) for areas that

Tools should be used throughout the planning process

Go-to resources for VISION 2050 and Plan Review process

Look for (!) or  in the tools

How to use the tools:

- Fill out tools using Formsite and submit with drafts and adopted plans

Regional Collaboration

The plan supports **collaboration for a healthy environment, thriving communities, and opportunities for all**, including coordination with other jurisdictions and agencies, tribes, ports, military installations, and adjacent regions.

Policies and programs should:

Support regional collaboration	Page/Policy Reference
✓ Include a statement about how the plan relates to countywide planning policies, VISION 2050, and planning requirements of the Growth Management Act	
⊗ Coordinate with other jurisdictions, agencies, tribes, ports, military installations, special purpose districts, and adjacent regions (RCW 36.70A.070(6)(a)(v), MPP-RC-1, RC-4-5)	
⊗ Prioritize services and access to opportunity for people of color, people with low incomes, and historically underserved communities to ensure all people can attain the resources and opportunities to improve quality of life and address past inequities (MPP-RC-2)	
⊗ Address land use, transportation, and housing opportunities and challenges related to military installations, when applicable (MPP-RC-6)	
✓ Prioritize investments in centers, including regional centers, countywide centers, high-capacity transit areas with a station area plan, and other local centers (MPP-RC-8-9)	
✓ Explore funding sources, changes to regulatory, pricing, taxing, and expenditure practices, and other fiscal tools to meet infrastructure and other needs (MPP-RC-10-11, RC-Action-7, RC-Action-9)	

Additional comments on Regional Collaboration or additional documents to share [optional]: _____

Certification Focus Areas (Comp Plans)



GMA transportation-related requirements

- Consistent land use assumptions and travel demand forecasts
- Service and facility needs
- Plan for transportation financing and projects
- Demand management
- Pedestrian and bicycle planning

Consistency with Regional Transportation Plans

- Transportation project lists and financing
- Transportation modeling based on shared regional growth assumptions

Consistency with VISION 2050 MPPs

- Regional Growth Strategy
- Climate change, air quality and VMT provisions
- Equitable transit-oriented development (TOD)
- Housing supply and choices near transit and job centers



Alignment between Plan Elements // Internal Consistency

- Transportation modeling based on different assumptions, inconsistent between elements

Alignment with Growth Targets // External Consistency

- Planned growth significantly higher than targets

Capacity for Planned Growth

Missing Transportation Requirements

- Project lists, bike + ped component, financing plan most common



Housing

- Development of local housing needs assessment
- Expanding capacity for moderate density housing



Climate

- Support for achieving regional greenhouse gas emission reduction goals
- Increasing resilience through identifying and addressing climate change impacts



Equity

- Innovative public engagement strategies
- Advancing racial equity through planning process and innovative policies
- Mitigating and addressing displacement

Plan Review Process



Plan Review FAQs



How does PSRC
coordinate with
Commerce?

Do plans have to
be consistent with
both the **CPPs** and
the **MPPs**?

How does
certification impact
eligibility for
transportation
funding?

What are the
**consequences for not
updating a plan in
compliance with PSRC or
state requirements?**

Resources & What's Next

VISION 2050 Resources



Plan Review Manual

VISION 2050 PLANNING Plan Review Manual May 2021

VISION Consistency Tool for Local Comprehensive Plans

Note: The tool shown here is for illustrative purposes. To fill out the tool, visit www.prcsc.org/tour-work/plan-review

This tool is intended to help cities and counties integrate VISION 2050 into their local comprehensive plans. VISION 2050's multicounty planning policies serve as the adopted regional guidelines and principles required in state law to guide both regional and local planning. The tool also identifies transportation planning requirements of the Growth Management Act (GMA). The tool may be used at various times in the local planning process.

Plan Update Scoping: Use checklist items as guidance for scoping the extent of plan element updates. New or expanded issue areas in VISION 2050 are identified to support this process.

Draft Plan Review: Submit draft plans to PSRC prior to Planning Commission and Council review. Completing and submitting this tool and providing early drafts to PSRC help identify potential consistency issues early in the process.

Certification Review: Along with the adopted plan, the tool will assist in PSRC's review of the plan. Demonstrating inclusion of the necessary information in the checklist helps facilitate certification. Note: The PSRC Executive Board is the final decision-making body for plan certification.

Regional Collaboration: The tool provides cities and counties an opportunity to highlight innovative policies and programs. This supports sharing of best practices across the region and benefits jurisdictions as they apply for planning grants and awards.

Resources

- Regional Plans: VISION 2050, Regional Transportation Plan, and Regional Economic Strategy
- VISION 2040 to VISION 2050 - summary of what changed in VISION 2050
- VISION 2050 Policy Matrix - a comparison of multicounty planning policies and actions from VISION 2040 to VISION 2050
- Plan Review Manual webinars - access more information about the review and certification process and find PSRC guidance and other resources by policy area. See previous [certification reports](#) for areas for future work.

VISION 2050 Consistency Tool for Comprehensive Plans 1

Plan Review Handout

Plan Review and Certification Program

Implementing VISION 2050 Through Local Planning

Long-range plans and policies are developed by the region to coordinate, address, coordinate planning, growth, and transit agencies to help manage current and future growth. PSRC reviews local plans, policies, and programs to ensure they are consistent with VISION 2050 and the Regional Transportation Plan.

State law requires PSRC to review and certify countywide planning policies, local comprehensive plans, and "Smart Transit" long-range plans. PSRC also certifies regional center plans and provides coordinated land use plans.

PSRC's review includes topics such as mobility, environment, regional growth, housing, and transportation coordination. Consistent with the previous regional plan, VISION 2040 provides new and additional focus on several issues, including housing, transportation, climate change, economic development, and transit. PSRC also reviews and provides guidance for high-capacity transit.

Types of Review

- Countywide Planning Policies
- Local Comprehensive Plans
- Regional Center Plans
- Long Range Transit Plans

Why certification?

- Regional Collaboration:** Challenges such as climate change, housing affordability, congestion, and other transportation issues require regional coordination. PSRC's review and certification of plans and policies supports local governments and public agencies in addressing regional issues.
- Requirements in State Law:** Certification is a key requirement for transportation planning and funding.
- Transportation Funding:** Certification of local comprehensive plans is required by PSRC for jurisdictions to be eligible for PSRC's federal transportation funding.

V2050 Policy Matrix & Updates Summary

VISION 2050 Goals, Policies, and Actions Table (Revised October 2020)

The adopted goals, policies, and actions in VISION 2050 were developed in partnership with VISION 2050. This table summarizes specific regional and multicounty changes in the multicounty planning policies in VISION 2050 and transitions between the policy in VISION 2040 and VISION 2050. The table is organized by policy number in the plan. Amendments made by the Growth Management Policy Review for the Executive Board in response to comments are shown in the "Significance of Change" column. PSRC's General Assembly adopted VISION 2050 on October 29, 2020.

Goal	Policy	Action	Significance of Change
GOAL 1: A healthy environment, a vibrant economy, and a sustainable future	MPP-AC-1	Coordinate planning efforts among jurisdictions, agencies, and stakeholders to manage growth, development, and transit. Coordinate with regional and local agencies to manage growth, development, and transit. Coordinate with regional and local agencies to manage growth, development, and transit.	New goal. Prior chapter (General Policies) did not include a goal statement.
MPP-AC-2	Coordinate planning efforts among jurisdictions, agencies, and stakeholders to manage growth, development, and transit. Coordinate with regional and local agencies to manage growth, development, and transit. Coordinate with regional and local agencies to manage growth, development, and transit.	Coordinate with regional and local agencies to manage growth, development, and transit. Coordinate with regional and local agencies to manage growth, development, and transit. Coordinate with regional and local agencies to manage growth, development, and transit.	Coordinate with regional and local agencies to manage growth, development, and transit. Coordinate with regional and local agencies to manage growth, development, and transit. Coordinate with regional and local agencies to manage growth, development, and transit.
MPP-AC-3	Coordinate planning efforts among jurisdictions, agencies, and stakeholders to manage growth, development, and transit. Coordinate with regional and local agencies to manage growth, development, and transit. Coordinate with regional and local agencies to manage growth, development, and transit.	Coordinate with regional and local agencies to manage growth, development, and transit. Coordinate with regional and local agencies to manage growth, development, and transit. Coordinate with regional and local agencies to manage growth, development, and transit.	Coordinate with regional and local agencies to manage growth, development, and transit. Coordinate with regional and local agencies to manage growth, development, and transit. Coordinate with regional and local agencies to manage growth, development, and transit.
MPP-AC-4	Coordinate planning efforts among jurisdictions, agencies, and stakeholders to manage growth, development, and transit. Coordinate with regional and local agencies to manage growth, development, and transit. Coordinate with regional and local agencies to manage growth, development, and transit.	Coordinate with regional and local agencies to manage growth, development, and transit. Coordinate with regional and local agencies to manage growth, development, and transit. Coordinate with regional and local agencies to manage growth, development, and transit.	Coordinate with regional and local agencies to manage growth, development, and transit. Coordinate with regional and local agencies to manage growth, development, and transit. Coordinate with regional and local agencies to manage growth, development, and transit.
MPP-AC-5	Coordinate planning efforts among jurisdictions, agencies, and stakeholders to manage growth, development, and transit. Coordinate with regional and local agencies to manage growth, development, and transit. Coordinate with regional and local agencies to manage growth, development, and transit.	Coordinate with regional and local agencies to manage growth, development, and transit. Coordinate with regional and local agencies to manage growth, development, and transit. Coordinate with regional and local agencies to manage growth, development, and transit.	Coordinate with regional and local agencies to manage growth, development, and transit. Coordinate with regional and local agencies to manage growth, development, and transit. Coordinate with regional and local agencies to manage growth, development, and transit.
MPP-AC-6	Coordinate planning efforts among jurisdictions, agencies, and stakeholders to manage growth, development, and transit. Coordinate with regional and local agencies to manage growth, development, and transit. Coordinate with regional and local agencies to manage growth, development, and transit.	Coordinate with regional and local agencies to manage growth, development, and transit. Coordinate with regional and local agencies to manage growth, development, and transit. Coordinate with regional and local agencies to manage growth, development, and transit.	Coordinate with regional and local agencies to manage growth, development, and transit. Coordinate with regional and local agencies to manage growth, development, and transit. Coordinate with regional and local agencies to manage growth, development, and transit.
MPP-AC-7	Coordinate planning efforts among jurisdictions, agencies, and stakeholders to manage growth, development, and transit. Coordinate with regional and local agencies to manage growth, development, and transit. Coordinate with regional and local agencies to manage growth, development, and transit.	Coordinate with regional and local agencies to manage growth, development, and transit. Coordinate with regional and local agencies to manage growth, development, and transit. Coordinate with regional and local agencies to manage growth, development, and transit.	Coordinate with regional and local agencies to manage growth, development, and transit. Coordinate with regional and local agencies to manage growth, development, and transit. Coordinate with regional and local agencies to manage growth, development, and transit.

VISION 2050 Booklet

VISION 2050 Multicounty Planning Policies

VISION 2050's multicounty planning policies are adopted under the state's Growth Management Act. Multicounty planning policies address regional issues within a collaborative planning framework. Counties and cities look to multicounty planning policies to inform updates to countywide planning policies and local comprehensive plan updates. This document compiles the goals and multicounty planning policies for each chapter for quick reference. More about VISION 2050 is available at www.prcsc.org/vision.

Compiled MPPs

VISION 2050 Multicounty Planning Policies

VISION 2050's multicounty planning policies are adopted under the state's Growth Management Act. Multicounty planning policies address regional issues within a collaborative planning framework. Counties and cities look to multicounty planning policies to inform updates to countywide planning policies and local comprehensive plan updates. This document compiles the goals and multicounty planning policies for each chapter for quick reference. More about VISION 2050 is available at www.prcsc.org/vision.

Recorded Webinar

VISION 2050 Plan Review & Certification Program

June 30, 2021

PSRC Guidance and Resources



Available Now:

- [Growth Target Guidance](#)
- [Economic Development Element Guide](#)
- [Tribal Coordination](#)
- [Community Data Profiles](#)

Upcoming this Summer:

- [Equitable Engagement](#)
- Conservation Toolkit
- Climate Change

Upcoming this Fall:

- Growth Outreach Toolkit
- Housing Guidance
- Equity Planning Resources
- Land Use Vision Forecast
- TOD + Centers Guidance [update]
- Multimodal Concurrency [update]

VISION 2050 Planning Resources

PSRC develops guidance, research, and data products to support local planning and advance VISION 2050. Browse resources below by policy topic area.



Regional Plans

- > [VISION 2050](#)
- > [Regional Transportation Plan](#)
- > [Regional Economic Strategy](#)

Guidance by Policy Topic Area (from PSRC and partner agencies)

Regional Collaboration and Equity	>
Regional Growth Strategy	>
Environment	>
Climate Change	>
Development Patterns: Centers and Transit-Focused Growth	>

[VISION 2050 Planning Resources](#)

[Previous Certification Reports](#)

Forecast Product for Modeling



Land Use Vision (LUV.3) Growth Projections

Policy-directed land use projection:

- Consistent with new growth targets & Regional Growth Strategy
- 2050 horizon and 5-year intermediate outputs (including 2044)
- Reflects 2022 Regional Transportation Plan system plans

Intended uses:

- Travel modeling and analysis inputs for comprehensive plan updates

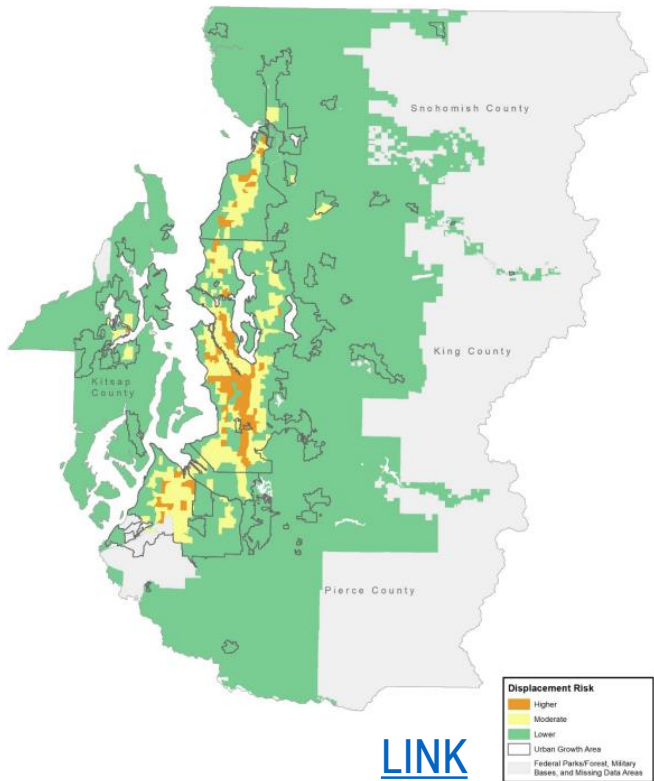
Expected release:

- Fall 2022
- Contact Mark Simonson (MSimonson@psrc.org) with questions

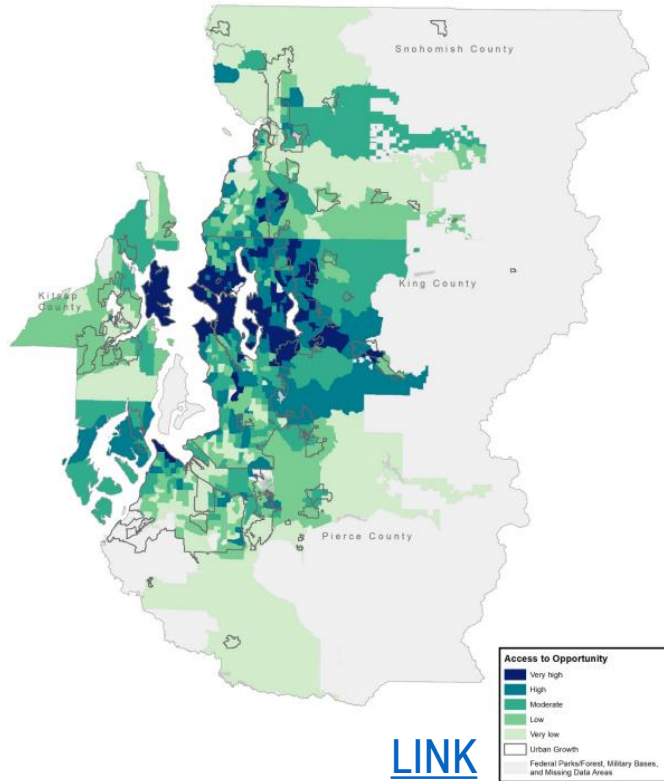




Displacement Risk



Opportunity Mapping





Puget Sound Regional Council

Select your Community:

Lynnwood

Select American Community Survey Data:

2016-2020 ACS Data

Population: 38,500
People of Color: 46.4%
Median Age: 40.2 years
People with a Disability: 14.2%
Median HH Income: \$62,900
HH Size: 2.59 people per household
Home Ownership: 53%
Unemployment Rate: 3.9%
Travel Time to Work: 31.4 minutes

Regional Definitions:

Regional Geography: Core Cities
Airport Affected Community: No

[Download Data Profiles in Excel](#)

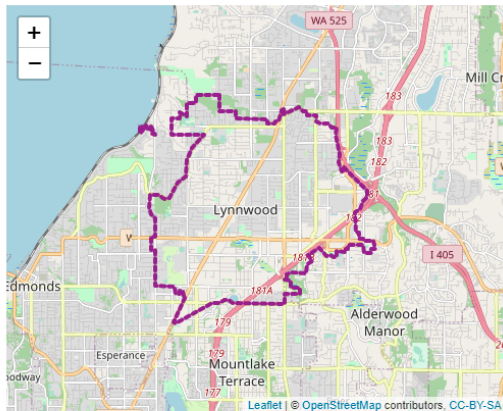


Community Profiles

As a State Data Center for the central Puget Sound region, PSRC keeps a complete inventory of data released from the U.S. Census Bureau. Cities and counties use it to track the well-being of children, families, and the elderly as well as to determine where to locate new public facilities. This portal includes demographic profiles on a variety of topics for all cities and towns in the PSRC region.

The data on this dashboard is a snapshot of the information that is available from the US Census Bureau. In order to view data for all the cities and towns in the Puget Sound region, we are limited to using American Community Survey (ACS) 5 year data. For this reason, you will only find two non-overlapping sets of data on this dashboard. By only including non-overlapping data, users can analyze the data for changing trends. The data on this dashboard is divided into five categories:

- People Measures
- Household & Housing Measures
- Job & Income Measures
- Transportation Measures
- Transportation Projects



Click on the icon at the top of the page that corresponds to the metrics that you are interested in and you will get access to those measures. If you have any questions about the data or are curious what else we might have, please click [here](#) and we will be happy to help.

How else can PSRC staff help early in the process?



Meet one-on-one to discuss plan scope and schedule



Present to councils, planning commissions, boards, etc.



VISION 2050, consistency tools, or resources

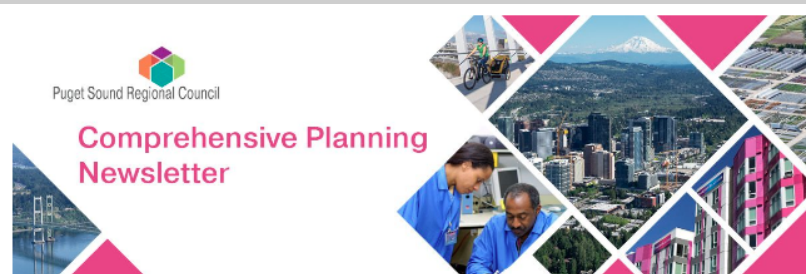
Email us at planreview@psrc.org

New! Newsletter

Sign up for PSRC's
Comprehensive
Planning Newsletter

@

[http://eepurl.com/h
QnYmj](http://eepurl.com/hQnYmj)



Welcome to PSRC's comprehensive planning newsletter, highlighting information on resources for local plan updates and the plan review process!

Please forward this newsletter on to others who may be interested. *You can unsubscribe at any time from this list by clicking "unsubscribe" at the bottom of this email.*

Contact Maggie Moore at mmoore@psrc.org with suggestions, questions, or comments.

Passport to 2044 – Periodic Update Workshop on June 15

PSRC, the Washington State Department of Commerce, and MRSC are hosting an online workshop on June 15 from 9:30 a.m. – 12 p.m. on comprehensive plan updates. The workshop will officially kick-off the 2024 class of plan updates! We will cover what's new in the Growth Management Act and VISION 2050 and explore the planning issues communities are most interested in. Attendees will also have an opportunity to connect with other staff working on comprehensive plans throughout the region.

Check out the [save the date](#) and share it with others.

What's New in GMA

The 2022 Washington Legislative Session adjourned in March with some changes in the local comprehensive planning process. Below are a couple key bills from the session. Check out the Washington State Department of Commerce's recap in their [April newsletter](#).

What's Next?



Passport to 2044 Series

Upcoming workshops:



Climate – Summer

Housing – Fall

Transportation – Fall

Economic Development – Fall

Equity – Fall

**Elected Officials and Planning
Commissions – TBD**

Tribal Participation – TBD



Thank you!

Liz Underwood-Bultmann, AICP
Principal Planner
LUnderwood-Bultmann@psrc.org

Maggie Moore
Senior Planner
MMoore@psrc.org

