

# 2023 Equity Advisory Committee Members



## KING COUNTY



### **Annie Tran**

*Pronouns: she/they | Race/Ethnicity: Chinese and Vietnamese*

Annie grew up in the Seattle-area and currently lives in Shoreline. Her experience in local government and non-profits are centered around civic engagement processes relating to local economic development, advancing democracy, and protecting the environment. She is passionate about removing barriers to participation and community building.



### **Ben Sung Henry**

*Pronouns: he/him | Race/Ethnicity: Biracial (Korean and White)*

Ben currently lives in Renton and has spent 20 years serving as a journalist, lobbyist, policy associate, community leader, and progressive movement-builder. He currently serves as Communications Director at Social Venture Partners International. He brings an equity lens to all his work, addressing the barriers facing marginalized Asian American and Pacific Islander (AAPI) communities throughout Washington.



### **Debbie Lacy**

*Pronouns: she/her | Race/Ethnicity: Mexican and White*

Debbie currently lives in Kirkland and is the founder of Eastside For All, which convenes partners to transform policies, practices, investments, and relationships so that the needs and solutions of communities of color are centered. She works with community and government agencies to address gaps in access to opportunities, resources, and representation.



### **Hien "Elly" Trinh**

*Pronouns: she/her | Race/Ethnicity: Vietnamese*

Elly is an academic immigrant from Sai Gon, Vietnam who currently lives in Burien. She works at a human services non-profit and is a student at South Seattle College working on a certificate in Building Science. She has a strong connection to community and innovative ideas on outreach/engagement.



**Julia Jannon-Shields**

*Pronouns: she/her | Race/Ethnicity: African American and French (Afro-French)*

Julia is a community planner working towards an equitable, sustainable future by centering minoritized experiences in governance, planning, & development. She amplifies this perspective in her role for the Community Engagement & Co-Creation Program at King County's Office of Equity & Social Justice; the Community Involvement Commission for the City of Seattle; NACTO; & BlackSpace Urbanist Collective. Julia is grateful for the opportunity to further equitable urbanism with PSRC.



**Lalita Uppala**

*Pronouns: she/her | Race/Ethnicity: Asian Indian*

Lalita currently lives in Bellevue. She serves as the Executive Director of the India Association of Western Washington (IAWW), which is the longest-serving Indian community-based organization in the Pacific Northwest. As part of her work, she has created programs, workshops and community conversations to address systemic racism.



**Lisa Espinosa**

*Pronouns: she/her | Race/Ethnicity: Latina and Native American*

Lisa currently lives in West Seattle and serves as an Energy Management Analyst for Seattle City Light. Lisa has an extensive background in providing energy efficient programs to communities. She is passionate about developing equitable benchmarks and brings tools and a strong connection with communities to support these efforts.



**Megan Espinoza**

*Pronouns: she/her | Race/Ethnicity: Latina and white*

Megan currently lives in Seattle's Hillman City and is an architect at a firm designing affordable housing. She has an extensive background in planning and zoning and is passionate about ensuring decisions are informed by community.



**Thanh Nguyen**

*Pronouns: she/they | Race/Ethnicity: Vietnamese and Chinese*

Thanh is a Vietnamese-Chinese American, raised by a single immigrant mother. Her expertise and lived experiences, focus on language access, capacity building, and community engagement in Asian American and Pacific Islander (AAPI), immigrant, low-income, unhoused communities, and disability justice. Through her community work, Thanh has helped reduce racial inequities by advocating for community centric funding, resources for the unhoused community, stronger tenant right protections, and community outreach that is culturally tailored and language accessible, most recently for Seattle's Comprehensive Plan. Thanh has been a part of the Washington Low Income Housing Alliance's Resident Action Project, Housing Justice Project, Puget Sound Sage's Community Leadership Institute Fellowship, and now serves on the board of the Asian Pacific Islander Community Leadership Foundation.

## KITSAP COUNTY



### **Jewel Shepherd-Sampson**

*Pronouns: she/her | Race/Ethnicity: African American*

Jewel currently lives in Port Orchard. She is a small business owner who has served on community advisory panels effectively connecting community to government agencies. She has a passion for working with youth and encouraging them to use their voices to impact change.



### **Shannon Turner**

*Pronouns: he/him | Race/Ethnicity: Black/African American*

Shannon currently lives in Poulsbo. He serves as the 2nd vice president of the NAACP in Bremerton, WA (Branch 1134) and is the chair of the DEI (Diversity, Equity, and Inclusion) Committee for the 23rd LD Democratic Party. In these roles he leads conversations, trainings, forums, etc. on racial inequities and how to combat them.

## PIERCE COUNTY



### **Brendan Nelson**

*Pronouns: he/him | Race/Ethnicity: Black/African American*

Brendan has lived in the Hilltop community his entire life. He serves as the Executive Director of EPIC, which is a nonprofit that focuses on addressing the needs of communities of color through business support, access to housing resources, educational opportunities, etc.



### **Dionne Bonner**

*Pronouns: she/her | Race/Ethnicity: Black*

Dionne currently lives in Central Tacoma and is passionate about reducing displacement. She is a small business owner and an artist who uses design as a catalyst to open dialog and reflection.



### **Julius Moss**

*Pronouns: he/him | Race/Ethnicity: Black/African American*

Julius currently lives in Southeast Tacoma, and his research focuses on identifying and dismantling systemic socioeconomic mobility barriers through higher education access. Recently, he defended his dissertation which described how organizational change impacted academic success rates of Black men enrolled at a local Pierce County community college district.



**Laurene Sayles**

*Pronouns: she/her | Race/Ethnicity: Black*

Laurene currently lives in Central Tacoma. She serves as a grant writer for the Urban League where she delivers human interest storytelling in the fields of education, youth, diversity/inclusion, workforce development, and social justice.

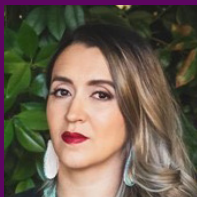
**SNOHOMISH COUNTY**



**Autrina Martindale**

*Pronouns: she/her | Race/Ethnicity: Black*

Autrina currently lives in Marysville and has built a lengthy career in financial planning and literacy with a focus on moving people of color toward greater equity. Her current work focuses on researching and developing innovative ways to impact institutional leadership and create solutions for long-term sustainable equity and advocacy for all people.



**Lupe Valtierra-Prieto**

*Pronouns: she/her | Race/Ethnicity: American Indian-Mexican Diaspora*

Lupe is a member of the LGBTQ+ community. She currently lives in Mill Creek. She's passionate about the importance of community informing decisions and as a DACA recipient working in the healthcare system, she brings a unique perspective about the barriers faced by undocumented professionals.



**Michelle Stewart**

*Pronouns: she/her | Race/Ethnicity: Black*

Michelle currently lives in Everett. She's working on a Masters in Public Administration at The Evergreen State College and brings a nuanced understanding of urban growth areas (UGA).



**Mindy Woods**

*Pronouns: she/her | Race/Ethnicity: white and Native American*

Mindy served in the military, has experienced homelessness and currently lives in Edmonds. She now serves as the Human Services Program Manager for the City of Edmonds and sits on several committees bringing a lens of equity to all of her work.