

# 2023 Transportation Alternatives Program

Virtual Workshop – June 16, 2023



Puget Sound Regional Council



*We are leaders in the region to realize equity for all. Diversity, racial equity and inclusion are integrated into how we carry out all our work.*

[psrc.org/equity](https://psrc.org/equity)



# Today's Workshop

- Overview of 2023 TAP competition
- Review of program eligibility and funding
- Discussion of evaluation criteria
- Next steps for project selection process
- Demonstration of resources and application





# Program Overview



- The Transportation Alternatives Program (TAP) is a Federal Highway Administration program for funding **community-based transportation improvements**.
- Funds can be used for pedestrian and bicycle facilities, historic preservation of transportation assets, and environmental mitigation.



# TAP Project Selection Process



# TAP Eligible Activities

## Pedestrian and Bicycle

- Active transportation facilities, including
- Infrastructure-related projects providing safe routes for non-drivers.
- Conversion of abandoned railway corridors into trails.
- Safety and educational activities for pedestrians and bicyclists under SRTS.
- Boulevards/other roadways in ROW of former divided highways.

## Historic Resources

- Historic preservation and rehabilitation of historic transportation facilities
- Archaeological activities relating to impacts transportation projects.

## Environmental

- Turnouts, overlooks and viewing areas
- Inventory, control or removal of outdoor advertising.
- Vegetation management transportation ROW.
- Storm water management related to highway construction or runoff .
- Reduction of vehicle-caused wildlife mortality or terrestrial or aquatic habitat restoration.



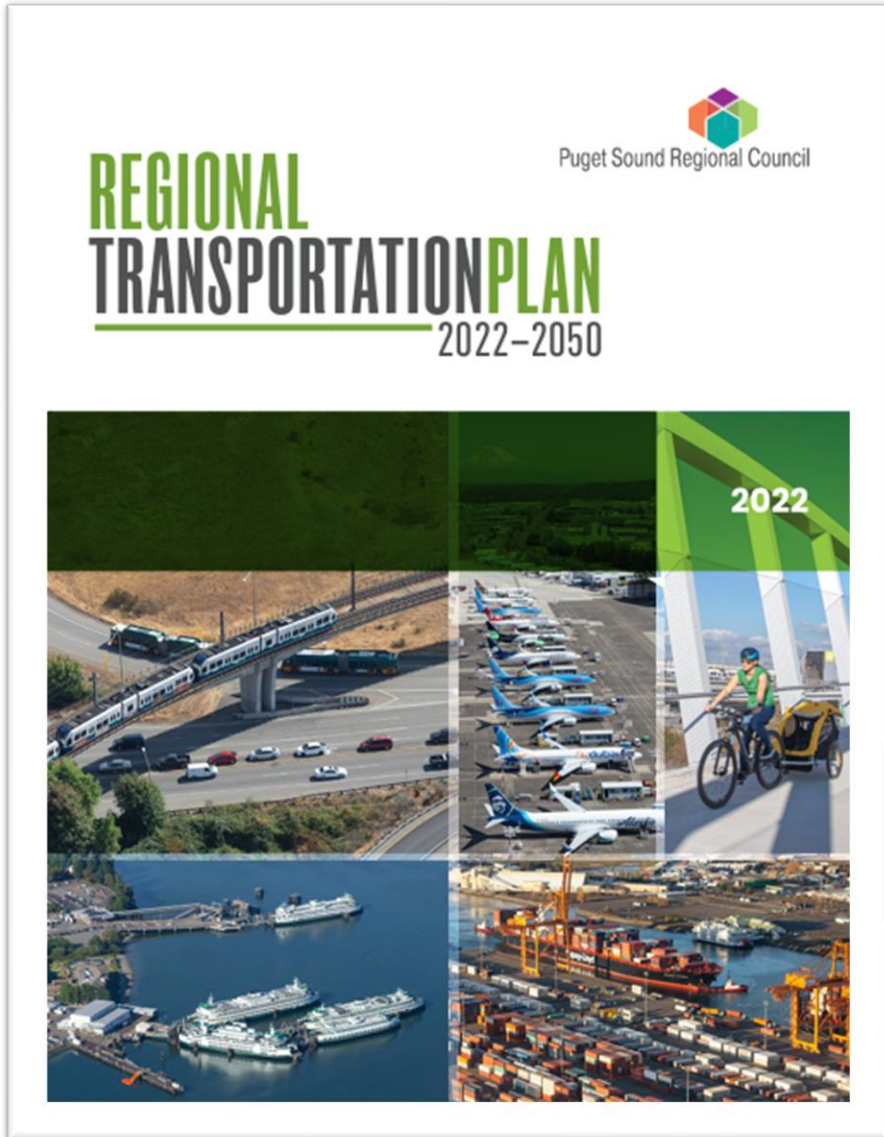


# Eligible Sponsors

- Public agencies, including cities and towns, counties, transit agencies, tribes, ports, school districts, etc.
- Nonprofit entities



# Plan Consistency Requirements



- Projects seeking PSRC funding must be in, or consistent with, the region's long-range **Regional Transportation Plan**.
- Projects must be in, or consistent with, the appropriate **city or county comprehensive plan** certified by PSRC.



# Available Funding

Distributing \$24 million in 2024 – 2026 funds. Sponsors select first and second preferences for years:

- \$7 million for 2024
- \$8.3 million for 2025
- \$8.3 million for 2026





# Funding Request Limits



- Funding requests are limited to **two applications per agency**.
- There is a **\$2.5 million** request limit per project.
- Awards limited to a **single phase** or **PE/Design + 1 phase**





# Funding Requirements

## Federal Requirements

- 13.5% match requirement
- Full funding of project phases
- Funds should be secured or reasonably expected

## PSRC Project Tracking

- Obligate funds by June 1<sup>st</sup> of program year awarded





# Evaluation Criteria Overview

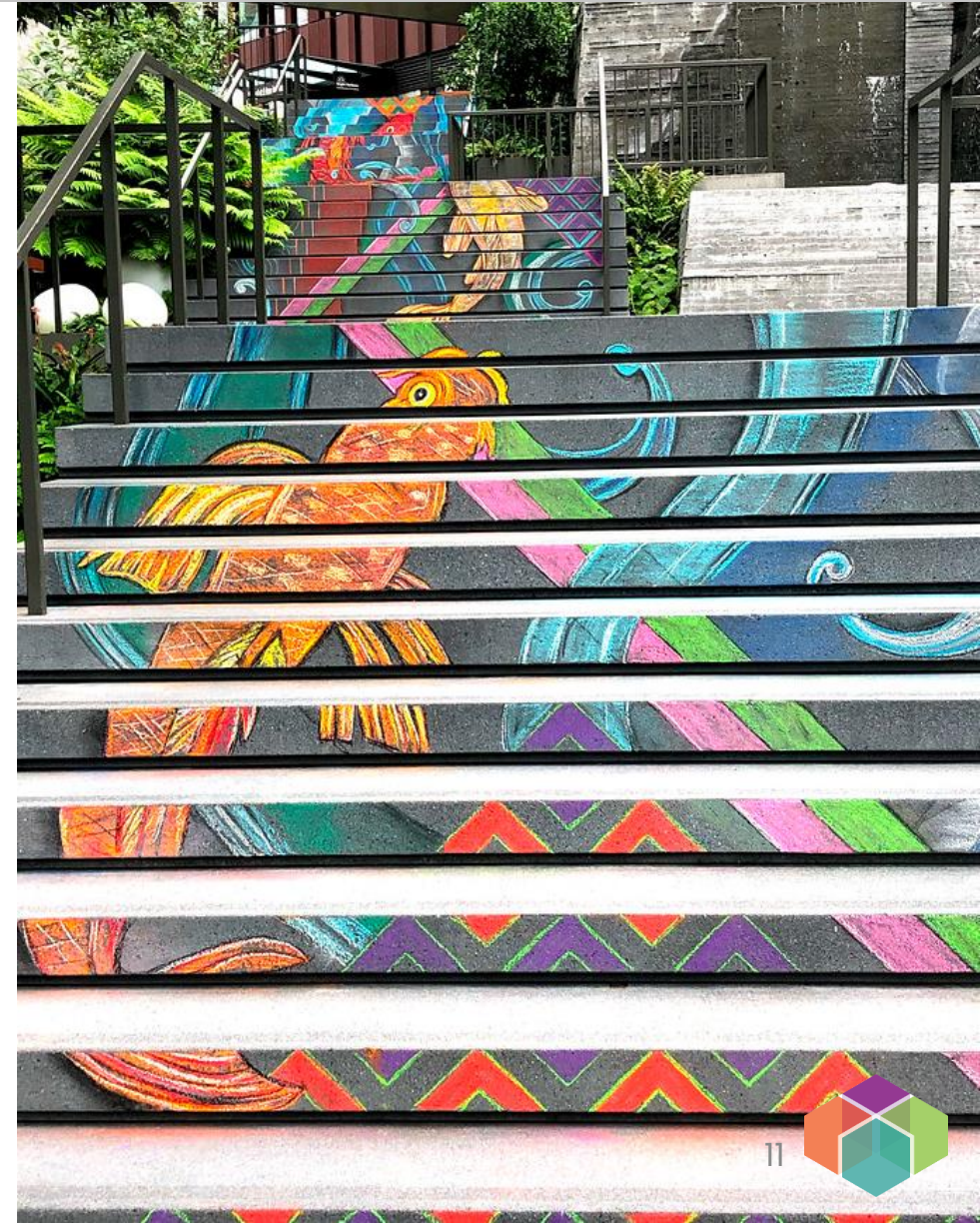
## Criteria for All Projects – 40 points

- Support for Centers
- Project Readiness

## Category-Specific Criteria – 60 points

- Pedestrian and Bicycle Projects
- Historic Resources Projects
- Environmental Projects

## Other Considerations – 0 points





# Criteria for All Projects



## Support for Centers (30 pts)

- Support for existing/planned housing and employment densities.
- Support for development/redevelopment plans and activities.

## Project Readiness/Financial Plan (10 pts)

- Status of prerequisites to obligation of regional funds.
- Availability of secured and reasonably available funds.





# Category-Specific – Ped/Bike Mobility

## Circulation, Mobility & Accessibility = 42 pts

- Extending and/or adding to ped/bike facility system/network.
- Addressing community needs and reducing barriers.
- Providing connections to transit.
- Providing public access and benefits to various user groups.
- Loss of opportunity if not funded.



# Category-Specific – Ped/Bike Equity (1)

Project should have potential to serve **identified equity population groups** in project areas, including:

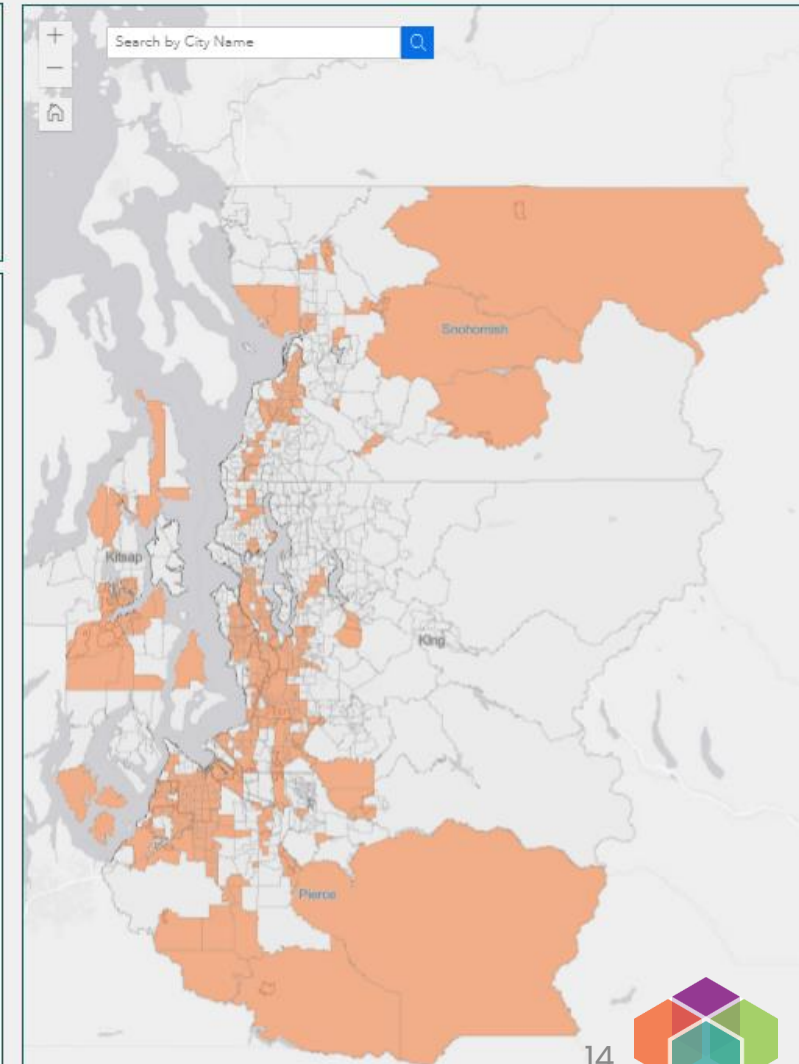
- People of color
- People with low-income
- Older adults
- People with disabilities
- Youth
- People with Limited English Proficiency

## PSRC Project Selection Resource Map

### HOW TO USE:

Access map layers by clicking the 'eye icon' below. Once the map data is displayed, click the map for additional pop-up information. Legend info will be shown to the right of the map. Zoom to the city level to view street names or by changing the basemap using the map icon in upper right of the map area.

- Regional Growth Centers
- Manufacturing/Industrial Centers
- Urban Growth Area
- FHWA Federal Urban Area
- Freight Routes
- Air Quality Focus Communities
- Opportunity Index
- People of Color
- People with Low Incomes
- Persons with Disabilities
- People with Limited English Proficiency
- Youth (Age 5-17)
- Older Adults (Age 65+)
- Cities
- Counties





# Category-Specific – Ped/Bike Equity (2)

## Equity = 10 pts

- Identify population groups served by project and how it addresses transportation disparities/gaps for those groups.
- Describe public outreach process for development of project.
- Identify displacement risk for area and mitigation strategies to address risks.





# Category-Specific – Ped/Bike Safety



## Safety and Security = 8 pts

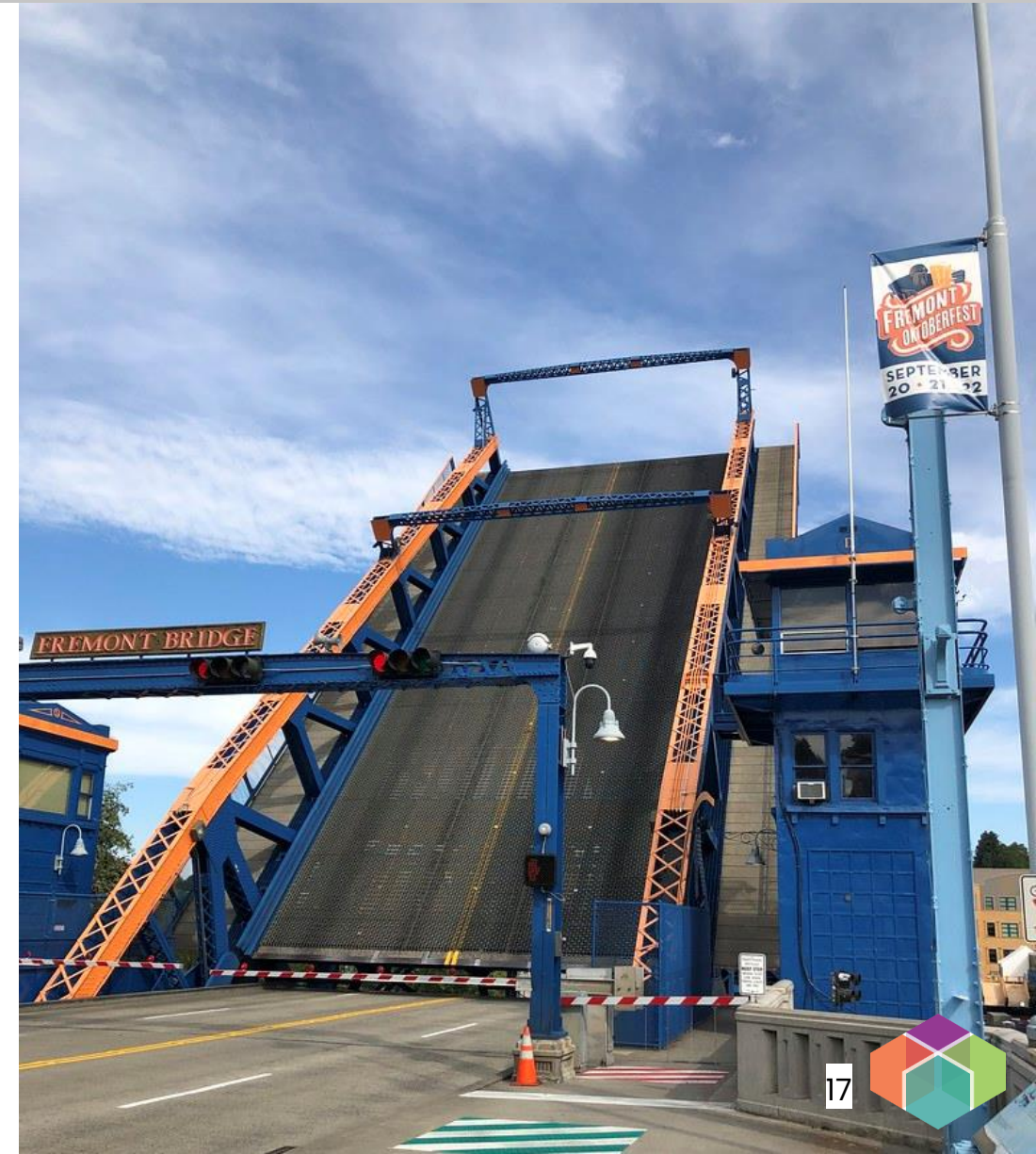
- Address safety and security.
- How project improves pedestrian/bicycle safety and/or improves facilities for pedestrian and bicycle safety and comfort.
- Address policies from adopted safety plan.
- Reduce reliance on enforcement and/or design for decreased speeds.





# Category-Specific – Historic Resources

- Historic significance of facility.
- Relationship to larger historic preservation plan.
- Former and/or current transportation use of facility.
- Plans for future use of facility and relationship to larger transportation system.
- Public access to project, including access for identified user groups.
- Long-term preservation/maintenance plans for facility.
- Loss of opportunity if not funded.





# Category-Specific – Environmental

- Relationship to the transportation system.
- Public access to project, including access for identified user groups.
- How project goes above normally required environmental mitigation.
- Long-term preservation/maintenance plans for facility.
- Loss of opportunity if not funded.





# Evaluation Criteria – Other Considerations



## Other Considerations = 0 pts

- Public review process and actions to involve stakeholders.
- Any additional aspects of project that could be relevant.



# Next Steps

June 26	Project screening forms due to PSRC
July 21	Project applications due to PSRC
August 21–25	Project Selection Committee recommendation meetings
Sep. 14	Transportation Policy Board release for public comment
Oct. 12	Transportation Policy Board funding recommendation
Oct. 26	Executive Board approves projects for funding
Mid–Nov	Approval into State TIP, funds available to projects





# Resources and Guidance

## Online Materials (available on PSRC TAP webpage)

- Eligibility Information
- Project Evaluation Criteria, including guidance
- Screening Form and Application Portal

## Additional Resources

- Screening Form and Application Checklists
- Equity Guidance
- Financial Constraint Guidance
- Project Selection Resource Webmap







# *Thank You!*

**Sarah Gutschow**

Senior Planner

[Sgutschow@psrc.org](mailto:Sgutschow@psrc.org)

**Nick Johnson**

Assistant Planner

[Njohnson@psrc.org](mailto:Njohnson@psrc.org)



Puget Sound Regional Council