



Summer Planning Academy **HANDBOOK**



Puget Sound Regional Council



Americans with Disabilities Act (ADA) Information

Individuals requiring reasonable accommodations may request written materials in alternate formats, sign language interpreters, physical accessibility accommodations, or other reasonable accommodations by contacting the ADA Coordinator, **Thu Le**, at **206-464-6175**, with ample advance notice. Persons who are deaf or hard of hearing may contact the ADA Coordinator, Thu Le, through TTY Relay 711.

Title VI Notice

PSRC fully complies with Title VI of the Civil Rights Act of 1964 and related statutes and regulations in all programs and activities. For more information, or to obtain a Title VI Complaint Form, visit <https://www.psrc.org/title-vi>.

Language Assistance

العربية (Arabic) | 中文 (Chinese) | Deutsch (German) | Français (French) | 한국어 (Korean) | Русский (Russian) | Español (Spanish) | Tagalog | Tiếng việt (Vietnamese)

Visit <https://www.psrc.org/language-assistance>

Funding for this document provided in part by member jurisdictions, grants from the U.S. Department of Transportation, Federal Transit Administration, Federal Highway Administration and Washington State Department of Transportation.

Additional copies of this document may be obtained by contacting:

Puget Sound Regional Council
Information Center
1201 Third Avenue, Suite 500,
Seattle, WA 98101
206-464-7532 | info@psrc.org | psrc.org

TABLE OF CONTENTS

Table of Contents 3

Welcome! 4

About Puget Sound Regional Council 5

Map of the central Puget Sound Region 6

Day 1 – Introduction to Planning – August 7, 2024 7

 Schedule 7

 Questions for the Day 8

Day 2 – Transportation – August 9, 2024 9

 Schedule 9

 Questions for the Day 10

Day 3 – Housing – August 14, 2024 11

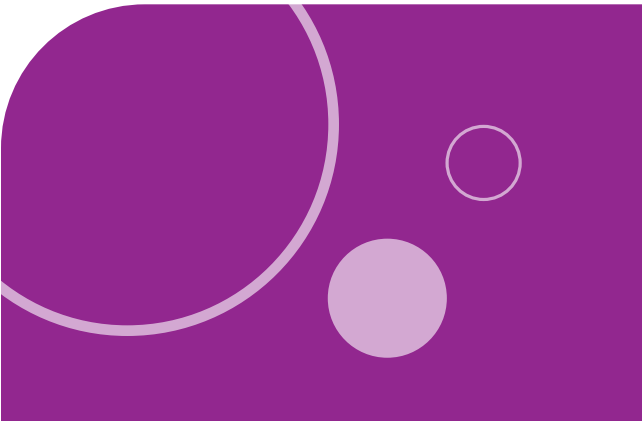
 Schedule 11

 Questions for the Day 12

Day 4 – Environmental Planning – August 16, 2024 13

 Schedule 13

 Questions for the Day 14





Welcome!

**Congratulations on being
a member of the second
Summer Planning Academy!**

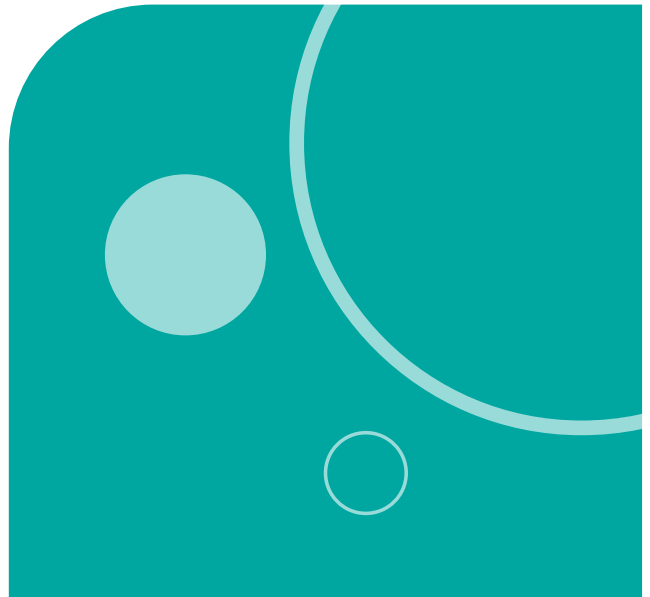
SPA is a leadership development opportunity offered free of charge to students interested in planning a better future for our region. SPA introduces students to planning topics through engaging sessions, activities, and site visits led by regional planning experts at PSRC, colleagues from partner agencies, and leaders from the community. The program encourages students to think creatively about how better planning can help people lead better lives. SPA can also help young people map out the required steps toward a career in the planning field.

About Puget Sound Regional Council

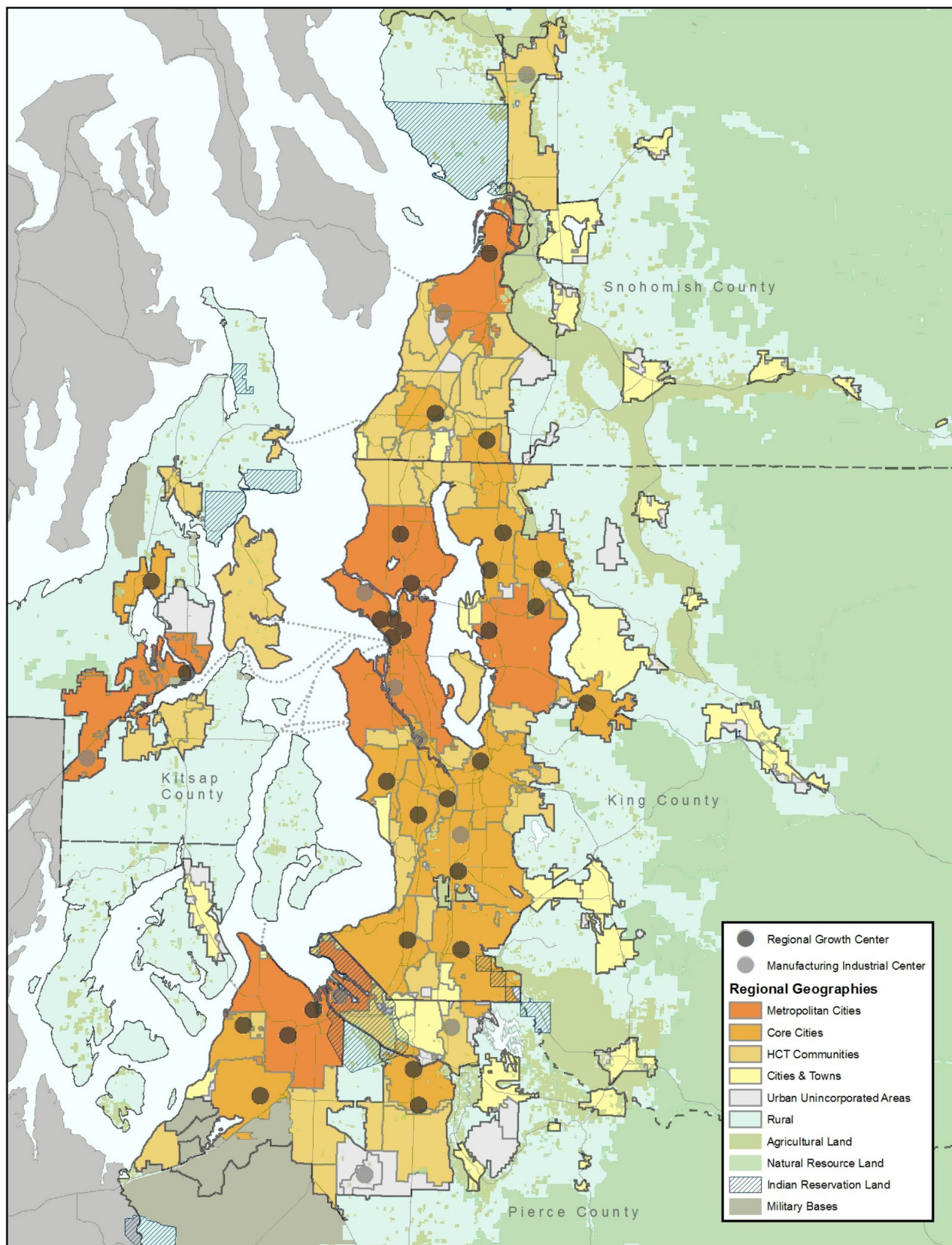
PSRC develops policies and coordinates decisions about regional growth, transportation and economic development planning within King, Pierce, Snohomish and Kitsap counties. PSRC is composed of nearly 100 members, including the four counties, cities and towns, ports, state and local transportation agencies and Tribal governments within the region.

Check us out on social media:

- **Blog:**
<https://www.psrc.org/whats-happening>
- **Facebook:**
<https://www.facebook.com/PugetSoundRegionalCouncil>
- **Twitter:**
<https://twitter.com/SoundRegion>
- **Instagram:**
<https://www.instagram.com/soundregion/>
- **LinkedIn:**
<https://www.linkedin.com/company/soundregion/>



Map of the Cental Puget Sound Region





Day 1

Introduction to Planning

August 7, 2024

SCHEDULE

10:00 AM

SPA Overview & Staff Introductions

10:15 AM

Welcome to SPA with
Executive Director Josh Brown

10:30 AM

Blocks and Lots Game

11:00 AM

Intro to Planning Presentation and Lunch

11:30 AM

Community Assessment Field Trip

1:30 PM

Field Trip Debrief

2:00 PM

Capstone Introduction and Work Time

3:00 PM

End of day

DAY 1 QUESTIONS

1. Why should regional government agencies, local, and state, consider an area's demographics when planning? What type of data would they need?

2. What are the demographics of your Center? Is the population growing? What is the largest age and race/ethnicity groups?

3. How does diversity play a role in shaping a community? What is your Center like?

4. How do you think planners utilize income and education data about communities to inform public policy?



Day 2 Transportation

August 9, 2024

SCHEDULE

9:30 AM

Meet PSRC staff at Pier 50 Dock
(south end of Colman Dock) in Seattle
– 801 Alaskan Way, Seattle, WA 98104

9:50 AM

Ride Fast Ferry to Bremerton

10:20 AM

Transportation Data Workshop

11:30 AM

Lunch

12:30 PM

Bus tour of Silverdale Transit Center

2:00 PM

Bremerton Walking Tour

2:45 PM

Line up for ferry

3:05 PM

Ride Fast Ferry to Seattle

3:35 PM

End of Day

DAY 2 QUESTIONS

1. How do workers commute in your Center?

2. What percentage of residents in your Center own or have access to a vehicle?

3. What transit modes are available in your group’s Center? (example: bus, light rail, commuter rail, streetcar, etc.)



Day 3 Housing

August 14, 2024

SCHEDULE

10:00 AM

Introduction to Housing

10:30 AM

Travel to Cedar Crossing

11:00 AM

Tour and information session with Mercy Housing, Bellwether Housing, and Sound Transit

12:00 PM

Lunch and Q&A with speakers

1:00 PM

Travel back to PSRC

1:30 PM

Housing Data Workshop

3:00 PM

End of day

DAY 3 QUESTIONS

1. In your Center, how has housing tenure (renting vs. owning) changed over the past ten years (2012–2022)? And how do these values compare to the other RGCs and the region?

2. In 2022, what is the most common housing unit type in your Center? What is the least common housing type? Does this seem consistent with your experience during the community assessment field trip?

3. In your Center, are renters more or less severely cost burdened in 2022 compared to 2017 and 2012? Do renters seem to be more or less cost burdened in your Center when compared to other Centers and the region?

4. Based on the answers to the questions above, do these data make sense when looking at the demographics (age, income, etc.) of this Center or do the results seem unusual? Would you expect different housing trends?



Day 4

Environmental Planning

August 16, 2024

SCHEDULE

9:30 AM

Introduction to Environmental Planning

10:00 AM

Travel to Volunteer Park

10:45 AM

Carousel Speaker Activity

Speakers:

- **Taha Ebrahimi**, Author, Street Trees of Seattle
- **Clare Sobetski**, WA DNR Youth Education and Outreach Program Manager
- **Daaniya Iyaz**, King County Heat Mitigation Strategy Specialist

12:15 PM

Lunch

12:45 PM

Travel back to office

1:30 PM

Environmental Data Workshop

2:30 PM

SPA Closing Ceremony

3:30 PM

End of Day

DAY 4 QUESTIONS

1. How does the average level of tree canopy coverage and urban heat in your Center compare to the City of Seattle as a whole?

2. How does the average heat temperatures in high canopy areas compare with the average heat in low canopy areas in your Center? Did you see a connection between tree canopy coverage and urban heat in your Center?

3. What are your general observations when looking at the Tree Equity Score mapping application?

Notes

[illegible]