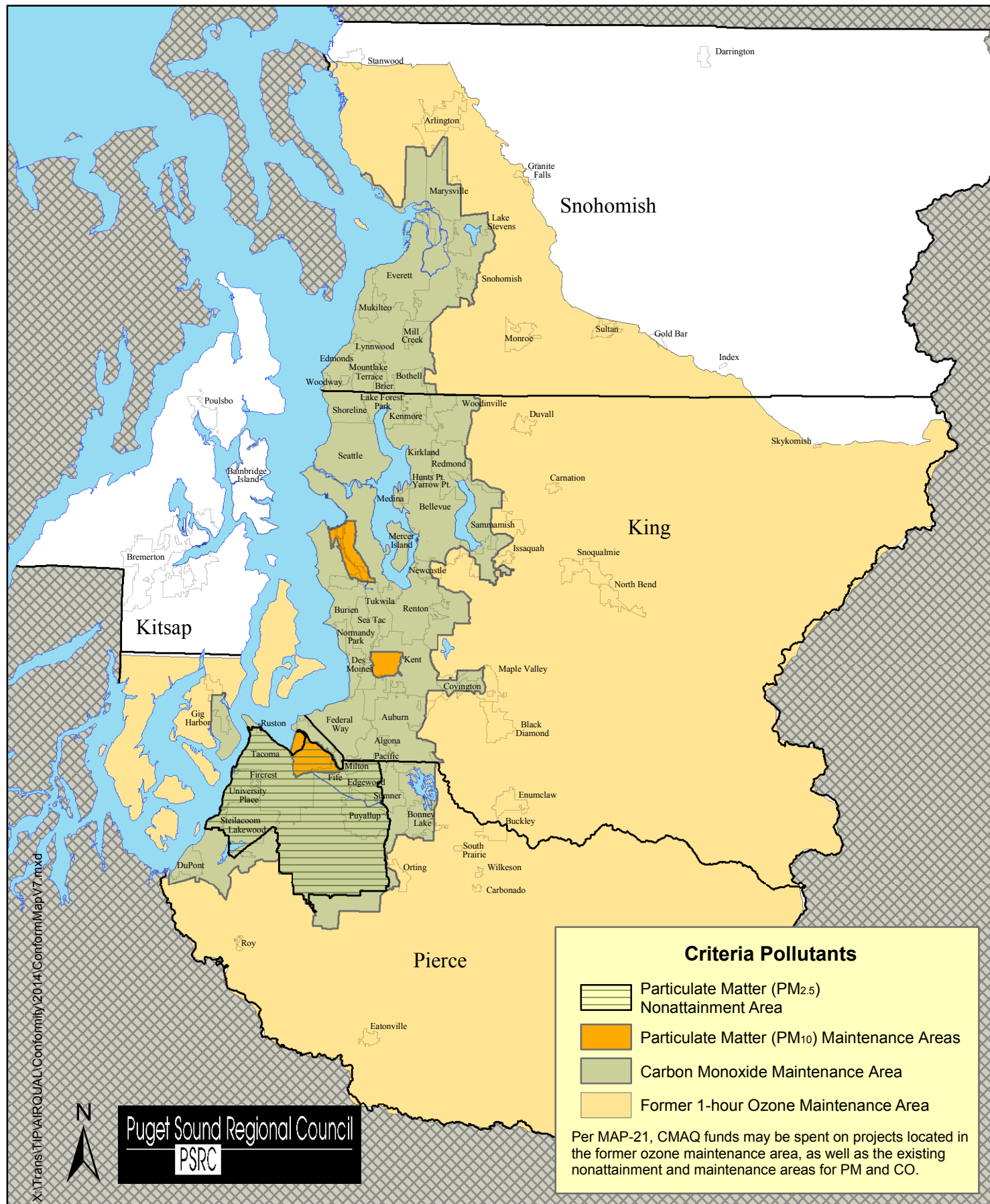


Current Central Puget Sound Region Designated Maintenance and Nonattainment Areas

February 2014



X:\Trans\TIP\AIRQUAL\Conformity\2014\ConformMap\MapV7.mxd



Criteria Pollutants

- Particulate Matter (PM_{2.5}) Nonattainment Area
- Particulate Matter (PM₁₀) Maintenance Areas
- Carbon Monoxide Maintenance Area
- Former 1-hour Ozone Maintenance Area

Per MAP-21, CMAQ funds may be spent on projects located in the former ozone maintenance area, as well as the existing nonattainment and maintenance areas for PM and CO.