



# An overview of Washington's global health community

Tina Vlasaty



# **GLOBAL HEALTH**

**Addressing the health needs of the world's  
most vulnerable populations  
at home and abroad**

Wait, you're from  
Seattle?



# WGHA's Mission

WGHA connects and informs  
Washington's global health community,  
creating a culture of collaboration at home so our  
members can have more impact in the world.

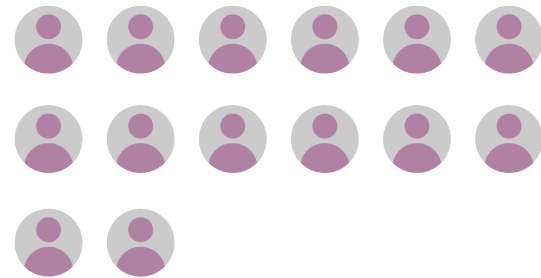


# Global health organizations & employees



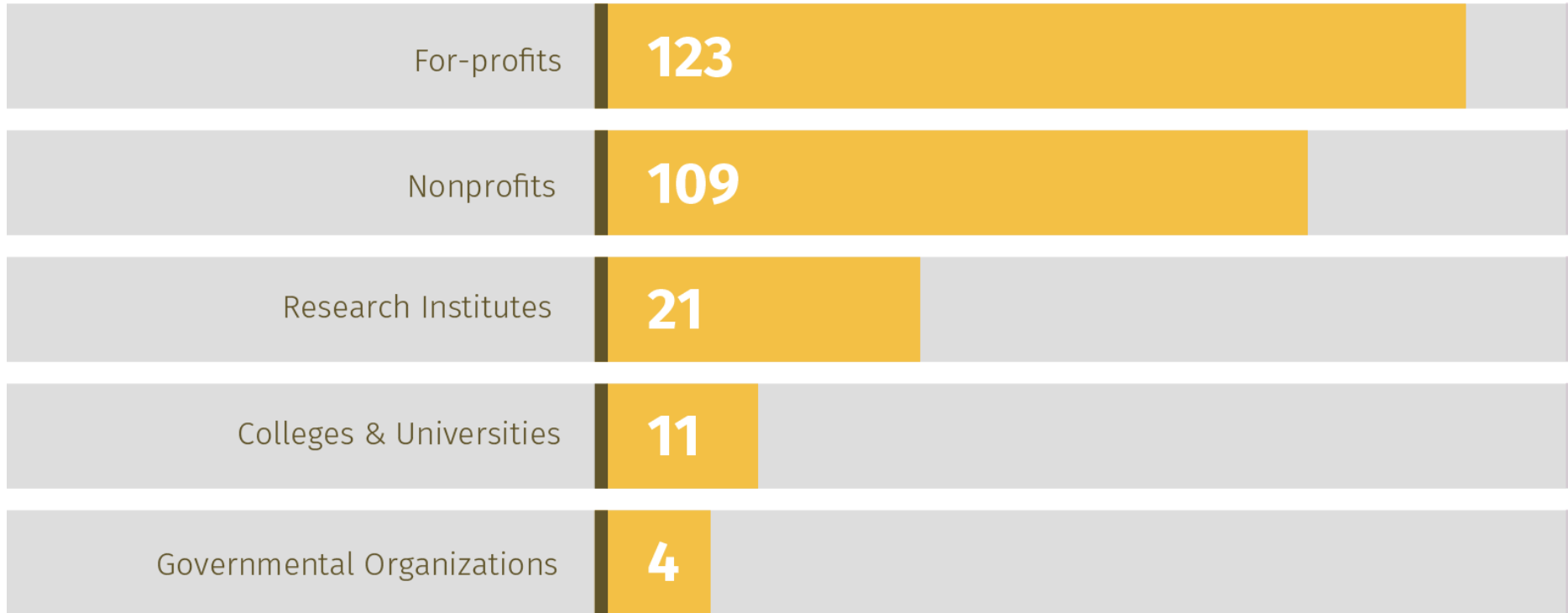
Washington-based organizations  
working in global health

14,000+  
Employees



 = 1,000 employees (as of 2017)

# Types of global health organizations



# Funders of Washington global health organizations

Funding 2017  
(Millions \$2017)

National Institute of Health (NIH)\* \$424.9



Bill & Melinda Gates Foundation \$286.9



US Agency for International Development (USAID)\* \$187.0



Department of State (DOS)\* \$8.8



National Science Foundation (NSF)\* \$4.4



Center for Disease Control & Prevention (CDC)\* \$4.1




---

*\* Federal Total*

*\$632.7 million*

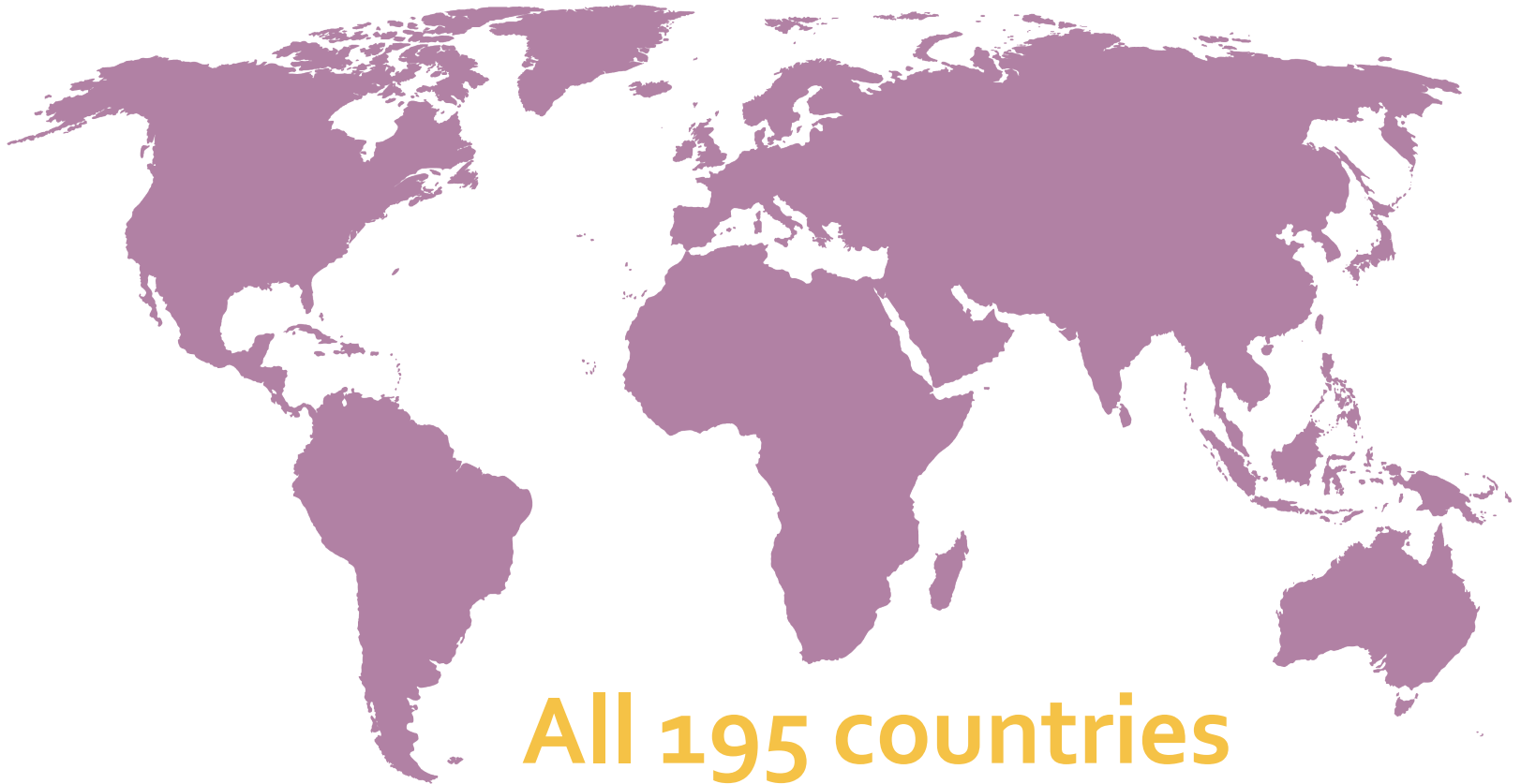
---

**Total: \$919.6 million**

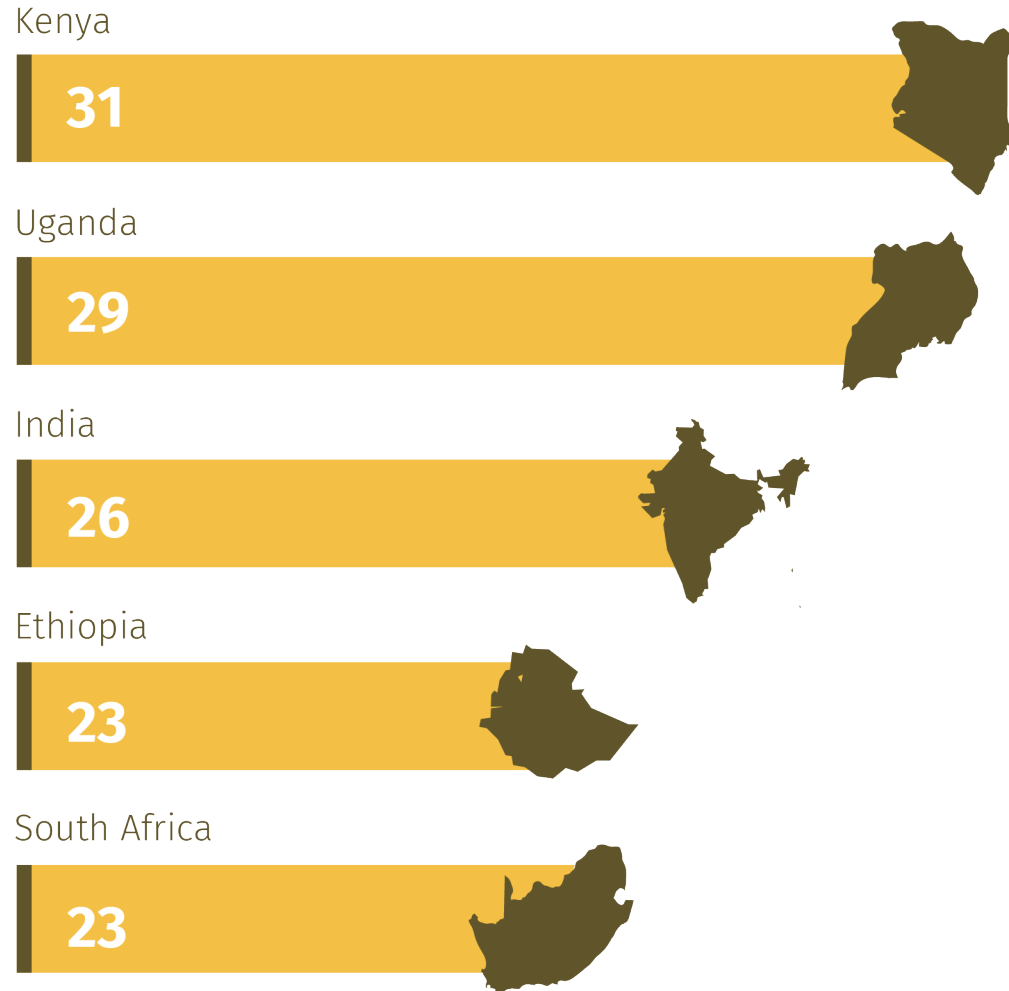




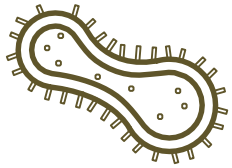
# Countries where we work



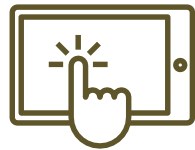
# Top 5 countries where we work



# Global health disciplines



Infectious  
disease



Digital / mobile  
technologies



Maternal, child, &  
newborn health



Health systems  
strengthening



Non-  
communicable  
disease



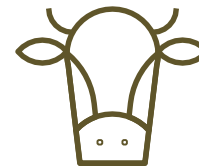
Surgical or  
clinical  
interventions



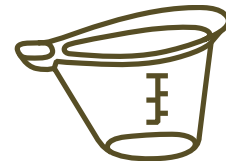
Planetary health



Food security



Animal  
health



Devices

# Top 5 global health disciplines

Infectious disease



Health systems strengthening



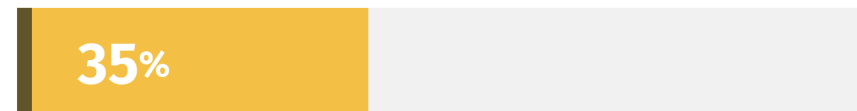
Maternal, child, and newborn health



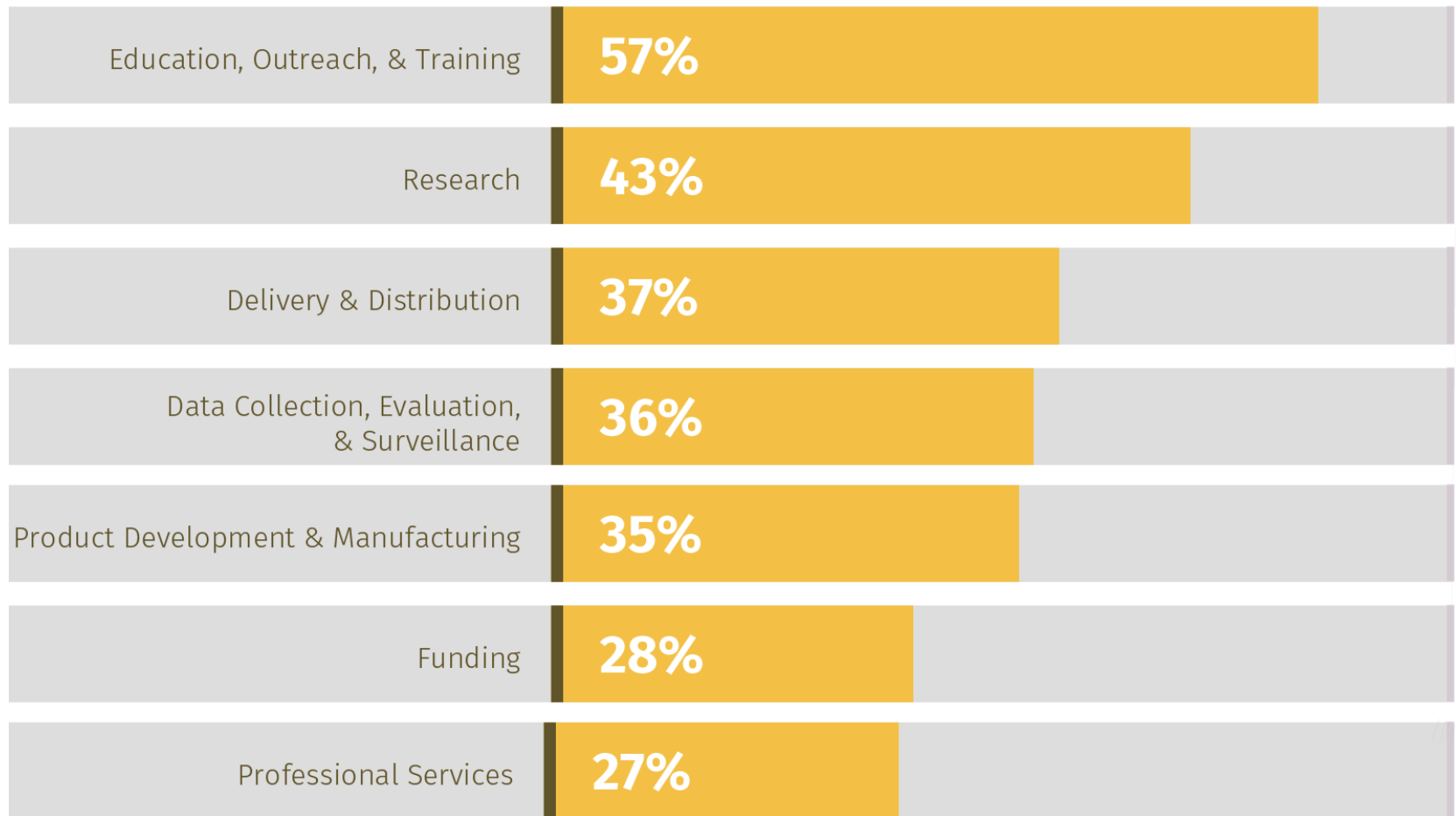
Noncommunicable disease



Digital/mobile technologies



# Global health activities

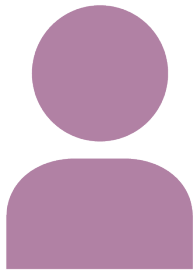


# Economic impact



**268**

Organizations



**14,000+**

Employees



**\$8.8 billion**

Output and revenue



Thank  
you!

Contact us: [www.wghalliance.org/who-we-are/staff/](http://www.wghalliance.org/who-we-are/staff/)  
Subscribe to *Field Notes*: [www.wghalliance.org/subscribe/](http://www.wghalliance.org/subscribe/)

