

Freight Advisory Committee

October 14, 2020



Puget Sound Regional Council

Committee Membership & Operating Procedures

Refer to Agenda Package



Freight Needs and Opportunities: 2022 Regional Transportation Plan



2022 Regional Transportation Plan

Responds to planned growth to 2050

- VISION 2050 transit-focused regional growth strategy

Objectives:

- Plan for system investments to accommodate future growth – population, employment, travel
 - Improve existing system, plan for new investments (aviation, rail, ferries)
- Make progress on existing challenges, address current and future needs of the transportation system
 - Provide better data and analysis to support local investment planning (2023-2024 comprehensive plans)



Draft Plan Schedule

January – Summer 2020

Fall 2020 - Summer 2021

Fall 2021 – Winter 2022

May 2022



Public Outreach



Informing the 2022 Regional Transportation Plan: Briefing Papers

- VISION 2050 Briefing [Paper](#) (*completed*)

Identify and raise awareness on key intersections between freight and land use, and ensure that future growth decision support and enhance freight mobility

- RTP Summary brief (*under development*)

Summarize ongoing efforts related to freight and goods movement and how lessons learned from these efforts will inform development of 2022 RTP

VISION 2050 



Freight
Briefing Paper

May 2019


Puguet Sound Regional Council



Informing the 2022 Regional Transportation Plan: Data Collection

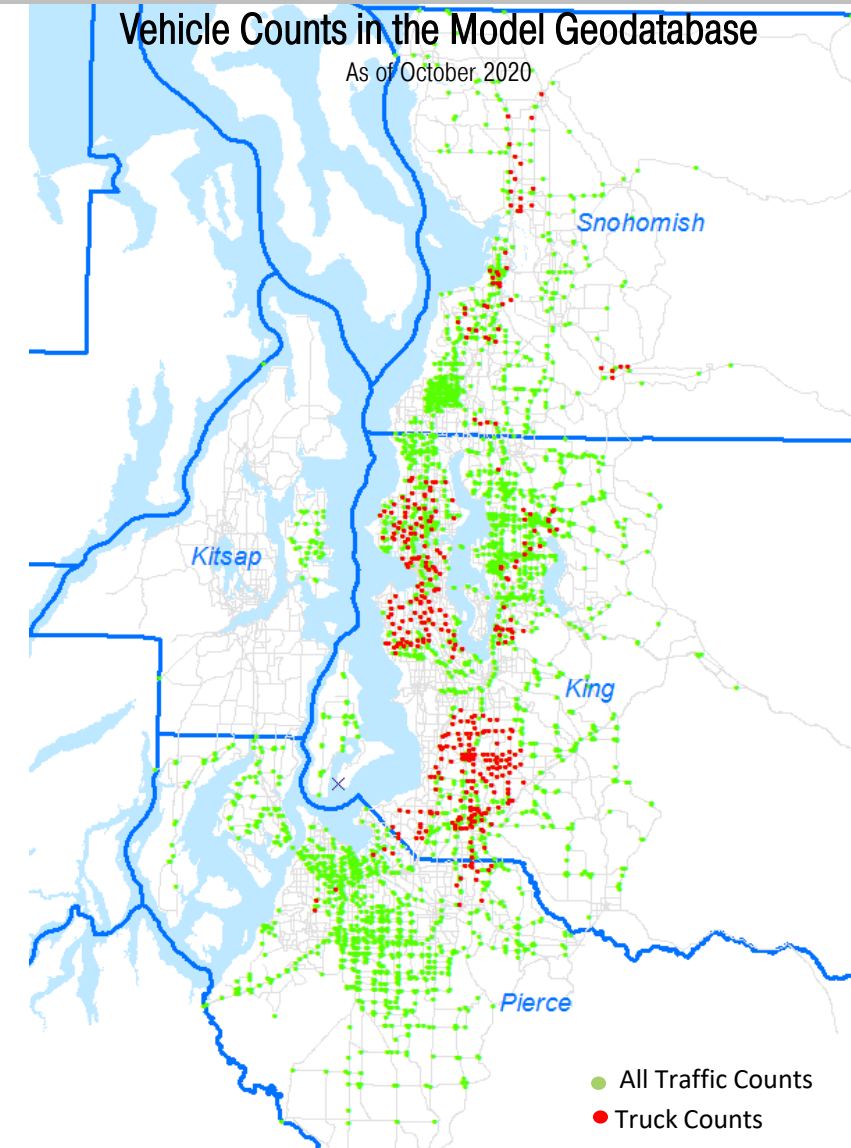
- ATRI heavy truck data
 - Obtained City of Tacoma's updated freight model/ATRI data
 - PSRC staff is evaluating this data to incorporate into the regional travel demand model (as relevant)
- Working on a potential commercial vehicle data purchase. Currently acquiring a sample dataset.



Informing the 2022 Regional Transportation Plan: Data Collection

Counts from local jurisdictions

- Received data on ~2300 count locations (~600 new counts) from PSRC outreach to jurisdictions
- Received additional ~500+ truck counts as part of the 2019 FGTS update
- Currently reviewing and incorporating counts into the model database



Informing the 2022 Regional Transportation Plan: Other Efforts

- Inventory of freight assets (*completed*)

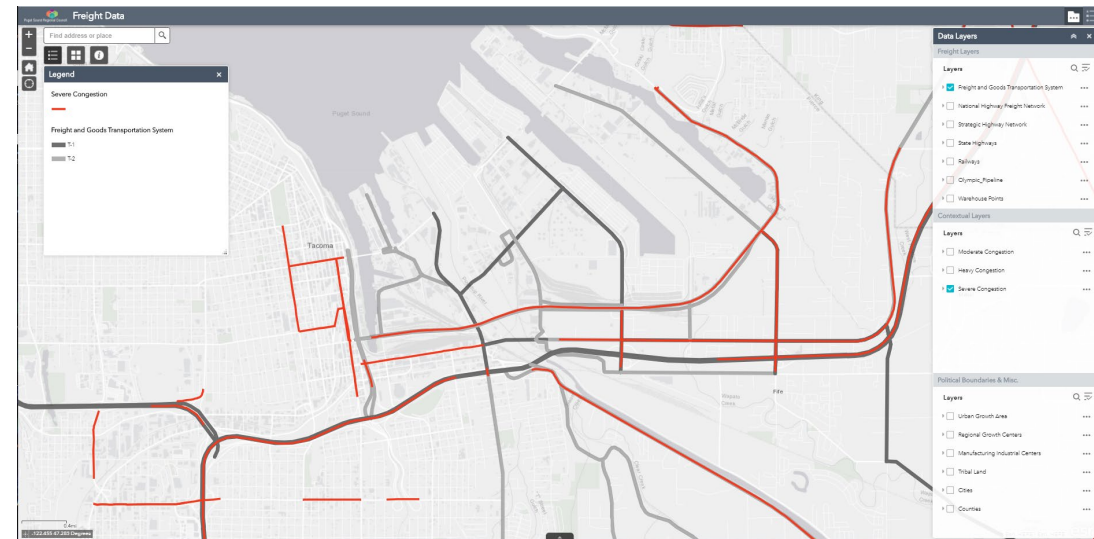
Interactive online tool to highlight freight assets, their unique characteristics, and expand understanding of the importance of freight to the economy and the transportation system

- Visualization Tool (*under development*)

Integrating freight and other datasets including system performance (e.g. congestion, ITS, etc.). The purpose is to identify needs and opportunities and inform 2022 RTP

- Performance Metrics

Ongoing refinement of analytical tools, and performance measures to evaluate investments in the Regional Transportation Plan



Discussion: Freight in the 2022 RTP

- The RTP visualization tool will help identify surface transportation needs and opportunities across all modes
- The RTP will also include an update to the Regional Capacity Project list, including freight investments
- In addition, there are other ongoing/completed efforts to identify freight needs and opportunities (e.g. 2019 State Rail Plan, JTC Road-Rail Conflicts Study)



Discussion: Freight in the 2022 RTP

The freight system is complex and multimodal

- While the inventory of freight assets is a start, how can we do a better job of highlighting what the region needs to know about freight?
- With the anticipated growth by 2050, how can we continue to raise awareness on potential impacts of growth and land use decisions on freight movement and vice versa?
- How can the RTP be used as a strategy document to highlight freight needs throughout the region, including both traditional regional on-road projects as well as cover other modes?



Questions?

Kelly McGourty

kmcgourty@psrc.org

Pavithra Parthasarathi

pparthasarathi@psrc.org

