



# City of Snohomish

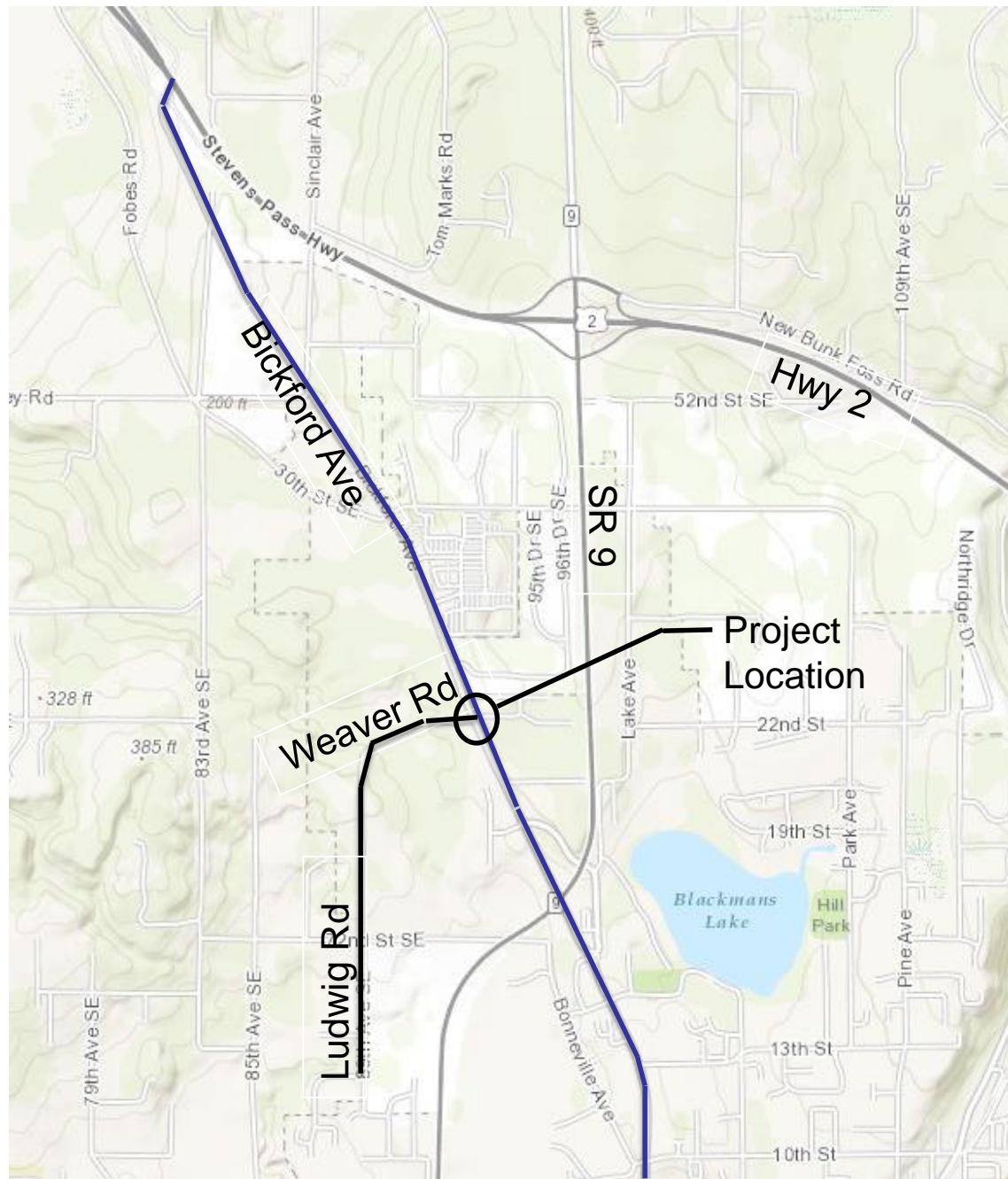
Rural Town Centers Grant – PSRC Presentation- June 19, 2019

---

## Bickford & Weaver Intersection Improvement Project



Vicinity Map





**Snohomish Station**  
(Local Town Center)  
Over 450,000 SF  
Of Commercial Buildings  
Featuring - Home Depot,  
Fred Meyer, Kohl's & more

**Town Center Corridor**  
(Weaver & Bickford)  
Heavily traveled  
Between  
Existing City Center,  
Future UGA Area  
and  
Snohomish Station

Intersection Deficiency  
Intersection Currently  
Operating at LOS F





# Intersection Deficiency

View looking northwest along Bickford Avenue at Weaver Road intersection



## Intersection Deficiency

Current Level of Service (LOS) is F with majority of delay minor legs of the intersection



View looking south along Bickford Avenue at Weaver Road intersection



## Purpose/Need

---

- Construct intersection improvements at Bickford Avenue and Weaver Road. Includes curbing, channelization, sidewalk, ADA and storm drainage improvements and installation of a traffic signal.
- Improve east-west movement along Weaver Road and Weaver Way and reduce delays accessing Bickford Avenue. Improve the Level of Service from failing to Level of Service A.
- Help both locally and regionally as project will also lessen impacts to Bickford Avenue (a pass through arterial).
- Improve Pedestrian Safety



## Scope

---

- ❑ Construct –  
The project will construct intersection improvements at Bickford Avenue and Weaver Road. Includes curbing, channelization, sidewalk, ADA and storm drainage improvements and installation of a traffic signal.
  
- ❑ Capacity Improvements –  
Involves constructing traffic signal in order to improve the Level of Service in both the eastbound and westbound directions for Weaver Road and Weaver Way.
  
- ❑ Mobility Improvements –  
The project will add pedestrian and bicycle facilities.



## Support of Rural Center/Corridor

---

- ❑ Provide for more efficient corridor affording local City Center traffic better access to Snohomish Station, the City's Town Center and largest shopping complex
  
- ❑ Add facilities for promoting multimodal transportation
  
- ❑ Improves pedestrian safety especially with 100-unit senior center facility under construction adjacent to the intersection



## Schedule & Budget

---

- Anticipate PE/Design to begin August 2019
  
- Anticipate completing PE/Design by March 2020
  
- Current PSRC Funding (RTC Grant) for the PE/Design Phase is \$216,250 (\$216,250 PSRC, \$33,750 Local Funds)
  
- PSRC Funding Request for the Construction Phase is \$735,250 (\$735,250 PSRC, \$114,750 Local Funds)
  
- Anticipate construction to begin May 2021
  
- Anticipate completing Construction by October 2021





## Conclusion

---

- ❑ Award would allow for Construction Phase with goal of improving mobility for access to and from the City's Rural Town Centers (Snohomish Station & City Center) including multiple modes of transportation.
- ❑ Award would also allow for completion of the project with the Rural Town Centers Grant Program funding for both Design and Construction.



QUESTIONS ?